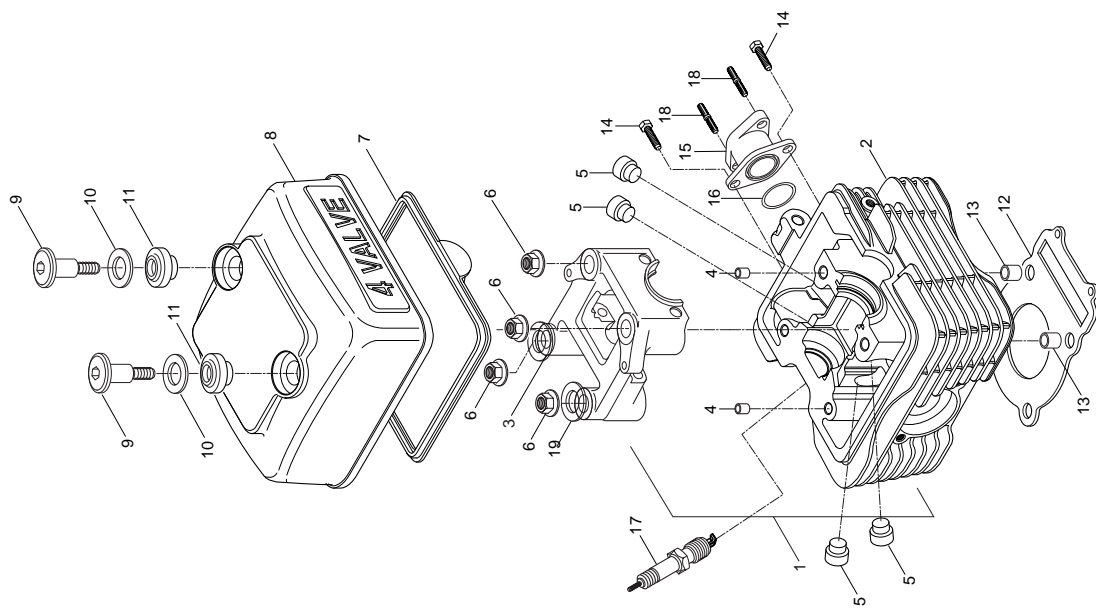


**HYOSUNG**

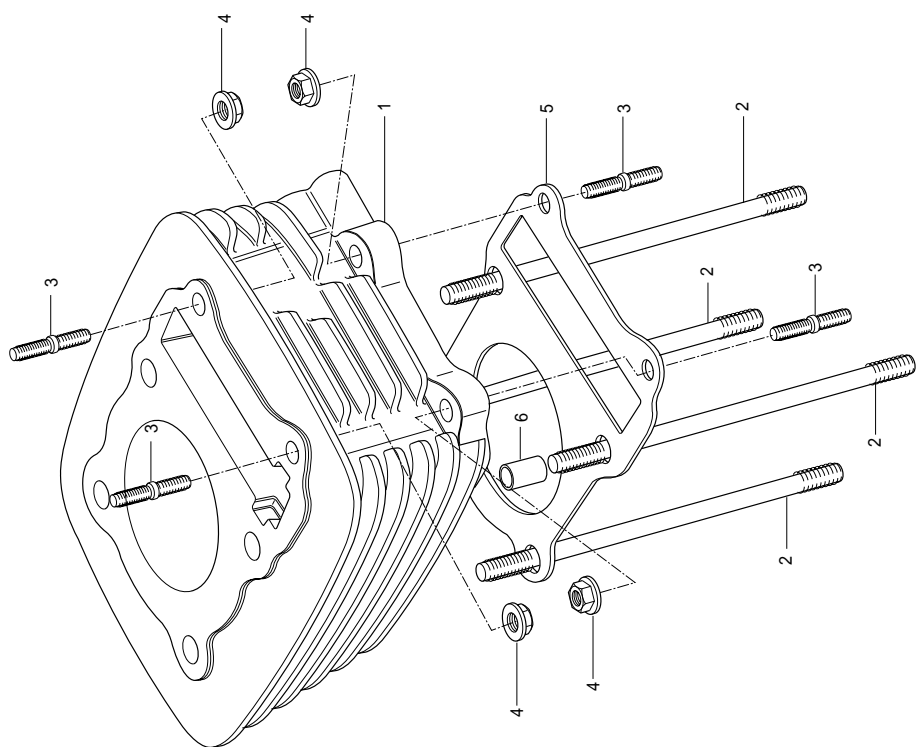
**XRX - RX 125**



**END**

FIG 1. CYLINDER HEAD

REF	PARTS NO.				PARTS NAME		Q'TY (PCS)	REMARKS
	NO. ST01	JEU01	JEU02	NG01	JG01	KEN01		
1	11100HG5810PCH	11100HG5810PCH	11100HG5810PCH	11100HG5810PCH	11100HG5810PCH	HEAD ASS'Y, CYLINDER	1	~ KM4PF41A641202817
1~1		11100HG5850PCH	11100HG5850PCH	11100HG5850PCH	11100HG5850PCH	HEAD ASS'Y, CYLINDER	1	KM4PF41A641202818 ~
2	11110HG5801PCH	11110HG5801PCH	11110HG5801PCH	11110HG5801PCH	11110HG5801PCH	HEAD COMP, CYLINDER	1	
3	11130HD6303PCH	11130HD6303PCH	11130HD6303PCH	11130HD6303PCH	11130HD6303PCH	HOLDER COMP,CAMSHAFT	1	
4	04213-11169	04213-11169	04213-11169	04213-11169	04213-11169	KNOCK PIN,CAMSHAFT HOLDER	2	
5	09289-05008	09289-05008	09289-05008	09289-05008	09289-05008	OIL SEAL VALVE STEM	4	
6	09159-08031	09159-08031	09159-08031	09159-08031	09159-08031	NUT, CYLINDER HEAD(M8)	4	
7	11173HD6302	11173HD6302	11173HD6302	11173HD6302	11173HD6302	GASKET,CYLINDER HEAD COVER	1	
8	11171HG580003S	11171HG580003S	11171HG580003S	11171HG580003S	11171HG580003S	COVER,CYLINDER HEAD	1	
9	09106H07009	09106H07009	09106H07009	09106H07009	09106H07009	BOLT,CYLINDER HEAD COVE(M7*18)	2	
10	11124H93B11	11124H93B11	11124H93B11	11124H93B11	11124H93B11	WASHER, CYLINDER HEAD COVER BOLT	2	
11	11123H93B01	11123H93B01	11123H93B01	11123H93B01	11123H93B01	PACKING, CYLINDER HEAD COVE BOLT	2	
12	11141H93B01	11141H93B01	11141H93B01	11141H93B01	11141H93B01	GASKET, CYLINDER HEAD	1	~ KM4PF41A641202817
12~1		11141HG5800	11141HG5800	11141HG5800	11141HG5800	GASKET, CYLINDER HEAD	1	KM4PF41A641202818 ~
13	04213-11169	04213-11169	04213-11169	04213-11169	04213-11169	KNOCK PIN,CYLINDER HEAD	2	
14	09128-06005	09128-06005	09128-06005	09128-06005	09128-06005	BOLT INTAKE PIPE(M6*20)	2	
14-1	01547-06148	01547-06148	01547-06148	01547-06148	01547-06148	BOLT INTAKE PIPE(M6*20)	1	
14-2				01547-06148	01547-06148	BOLT INTAKE PIPE(M6*20)	1	
15	13110HG5802	13110HG5802	13110HG5802	13110HG5802	13110HG5802	PIPE COMP,INTAKE	1	~ KM4PF41A641202817
15~1		13110HG5870	13110HG5870	13110HG5870	13110HG5870	PIPE COMP,INTAKE	1	KM4PF41A641202818 ~
16	09280H32006	09280H32006	09280H32006	09280H32006	09280H32006	O-RING INTAKE PIPE	1	
17	09482-01248	09482-01248	09482-01248	09482-01248	09482-01248	SPARK PLUG,C8EH-9	1	
17-1						SPARK PLUG,C8EH-9	1	
18	01421-06168	01421-06168	01421-06168	01421-06168	01421-06168	STUD BOLT, INTAKE PIPE(M6*16)	2	
19	09168-08021	09168-08021	09168-08021	09168-08021	09168-08021	GASKET, cylinder head nut	4	



END

FIG 2. CYLINDER

REF NO. ST01	PARTS NO.				PARTS NAME	Q'TY (PCS)	REMARKS
	JEU01	JEU02	NG01	JG01			
1	11210HG5800PCY	11210HG5800PCY	11210HG5800PCY	11210HG5800PCY	CYLINDER COMP	1	~ KM4PF41A641202817
	11210HG5850PCY	11210HG5850PCY	11210HG5850PCY	11210HG5850PCY	CYLINDER COMP	1	KM4PF41A641202818 ~
2	09108H08175	09108H08175	09108H08175	09108H08175	STUD BOLT (L=224)	4	
3	01421-06258	01421-06258	01421-06258	01421-06258	STUD BOLT(M6*25)	4	
4	08316-16068	08316-16068	08316-16068	08316-16068	NUT(M16)	4	
5	11241H05201	11241H05201	11241H05201	11241H05201	GASKET, CYLINDER(NA)	1	
6	04213-11149	04213-11149	04213-11149	04213-11149	KNOCK PIN,CYLINDER	2	



FIG 3. CRANK CASE

REF	PARTS NO.					PARTS NAME	Q'TY (PCS)	REMARKS
	NO. ST01	JEU01	JEU02	NG01	JG01	KEN01		
1	11300HG5800HPA	11300HG5800HPA	11300HG5800HPA	11300HG5800HPA	11300HG5800HPA	11300HG5800HPA	1	CRANK CASE ASSY
2	04213-13189	04213-13189	04213-13189	04213-13189	04213-13189	04213-13189	2	PIN,CRANK CASE
3	01547-06558	01547-06558	01547-06558	01547-06558	01547-06558	01547-06558	4	BOLT CRANK CASE(M6*55)
4	01547-06608	01547-06608	01547-06608	01547-06608	01547-06608	01547-06608	4	BOLT CRANK CASE(M6*60)
5	01547-06758	01547-06758	01547-06758	01547-06758	01547-06758	01547-06758	4	BOLT CRANK CASE(M6*75)
6	11319-05200	11319-05200	11319-05200	11319-05200	11319-05200	11319-05200	1	PLATE OIL GALLERY PLUG
7	01107-06106	01107-06106	01107-06106	01107-06106	01107-06106	01107-06106	1	BOLT, OIL GALLERY PLATE(M6*10)
8	11310HG5803PCC	11310HG5803PCC	11310HG5803PCC	11310HG5803PCC	11310HG5803PCC	11310HG5803PCC	1	CRANK CASE R
9	11320HG5800PCC	11320HG5800PCC	11320HG5800PCC	11320HG5800PCC	11320HG5800PCC	11320HG5800PCC	1	CRANK CASE L
10	09364-12001	09364-12001	09364-12001	09364-12001	09364-12001	09364-12001	1	UNION BREATH HOSE
11	13824-05331	13824-05331	13824-05331	13824-05331	13824-05331	13824-05331	1	CLAMP, BREATHER DRAIN CAP
12	13870H29B00	13870H29B00	13870H29B00	13870H29B00	13870H29B00	13870H29B00	1	CAP COMP, BREATHER DRAIN

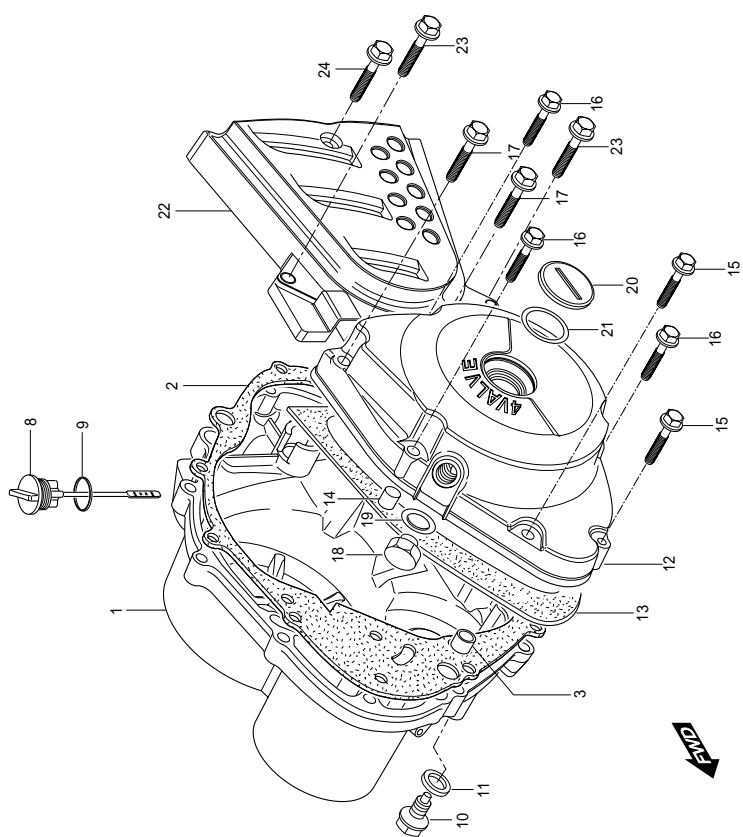
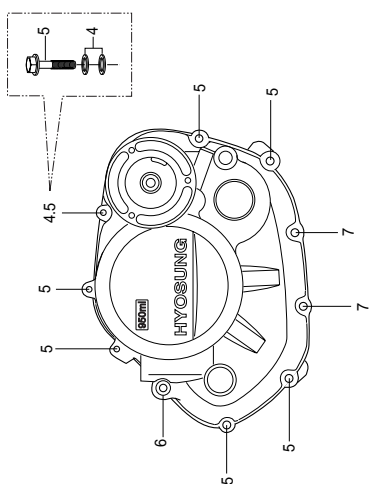
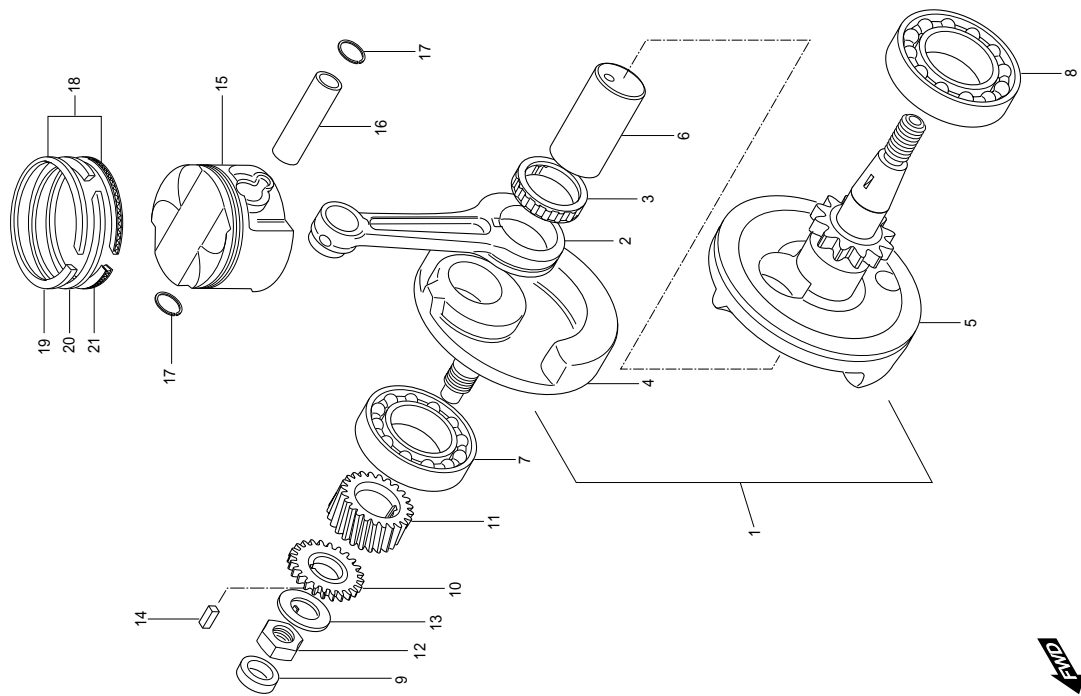




FIG 4. CRANK CASE COVER

REF	PARTS NO.				PARTS NAME		Q'TY (PCS)	REMARKS
	NO. ST01	JEU01	JEU02	NG01	JG01	KEN01		
1	11340HG580103S	11340HG580103S	11340HG580103S	11340HG580103S	11340HG580103S	11340HG580103S	1	COVER COMP,CLUTCH
2	11482H05211	11482H05211	11482H05211	11482H05211	11482H05211	11482H05211	1	GASKET CLUTCH COVER(NA)
3	04213-13189	04213-13189	04213-13189	04213-13189	04213-13189	04213-13189	2	PIN,CLUTCH COVER
4	09168H06009	09168H06009	09168H06009	09168H06009	09168H06009	09168H06009	2	GASKET CLUTCH COVER BOLT
5	01547-06303	01547-06303	01547-06303	01547-06303	01547-06303	01547-06303	7	BOLT CLUTCH COVER(M6*30)
6	01547-06453	01547-06453	01547-06453	01547-06453	01547-06453	01547-06453	1	BOLT CLUTCH COVER(M6*45)
7	01547-06403	01547-06403	01547-06403	01547-06403	01547-06403	01547-06403	2	BOLT CLUTCH COVER(M6*40)
8	11971HE6100	11971HE6100	11971HE6100	11971HE6100	11971HE6100	11971HE6100	1	PLUG, ENGINE OIL FILLER
9	09280-17003	09280-17003	09280-17003	09280-17003	09280-17003	09280-17003	1	O/RING ENGINE OIL FILTER PLUG
10	09247-14026	09247-14026	09247-14026	09247-14026	09247-14026	09247-14026	1	PLUG, OIL CHECK
11	09168H14003	09168H14003	09168H14003	09168H14003	09168H14003	09168H14003	1	GASKET,OIL CHECK PLUG
12	11351HG580203S	11351HG580203S	11351HG580203S	11351HG580203S	11351HG580203S	11351HG580203S	1	COVER,MAGNETO
13	11483H05301	11483H05301	11483H05301	11483H05301	11483H05301	11483H05301	1	GASKET MAGNETO COVER(NA)
14	04213-09129	04213-09129	04213-09129	04213-09129	04213-09129	04213-09129	1	PIN,MAGNETO COVER
15	01547-06303	01547-06303	01547-06303	01547-06303	01547-06303	01547-06303	2	BOLT, MAGNETO COVER(M6*30)
16	01547-06353	01547-06353	01547-06353	01547-06353	01547-06353	01547-06353	3	BOLT, MAGNETO COVER(M6*35)
17	01547-06453	01547-06453	01547-06453	01547-06453	01547-06453	01547-06453	2	BOLT, MAGNETO COVER(M6*45)
18	09247H12102	09247H12102	09247H12102	09247H12102	09247H12102	09247H12102	1	PLUG T.D.C.
19	09168H12003	09168H12003	09168H12003	09168H12003	09168H12003	09168H12003	1	GASKET,T.D.C. PLUG
20	09259-2601503S	09259-2601503S	09259-2601503S	09259-2601503S	09259-2601503S	09259-2601503S	1	PLUG, CRANK SHAFT HOLE
21	09280-22008	09280-22008	09280-22008	09280-22008	09280-22008	09280-22008	1	O/RING CRANK SHAFT HOLE PLUG
22	11361HG580003S	11361HG580003S	11361HG580003S	11361HG580003S	11361HG580003S	11361HG580003S	1	COVER, ENGINE SPROCKET
23	01547-06253	01547-06253	01547-06253	01547-06253	01547-06253	01547-06253	2	BOLT ENGINE SPROCKET COVER(M6*25)
24	01547-06603	01547-06603	01547-06603	01547-06603	01547-06603	01547-06603	1	BOLT ENGINE SPROCKET COVER(M6*60)



END

FIG 5. CRANK SHAFT

REF	PARTS NO.				PARTS NAME		Q'TY (PCS)	REMARKS
	NO. ST01	JEU01	JEU02	NG01	JG01	KEN01		
1	12200HD6301HPA	12200HD6301HPA	12200HD6301HPA	12200HD6301HPA	12200HD6301HPA	12200HD6301HPA	1	CRANK SHAFT ASSY
2	12161HD6301	12161HD6301	12161HD6301	12161HD6301	12161HD6301	12161HD6301	1	ROD CONNECTINT
3	09263H30003	09263H30003	09263H30003	09263H30003	09263H30003	09263H30003	1	BEARING,CRANK PIN
4	12221HF4600CSA	12221HF4600CSA	12221HF4600CSA	12221HF4600CSA	12221HF4600CSA	12221HF4600CSA	1	CRANK SHAFT R
5	12261H35C02CSA	12261H35C02CSA	12261H35C02CSA	12261H35C02CSA	12261H35C02CSA	12261H35C02CSA	1	CRANK SHAFT L
6	12211HF4600	12211HF4600	12211HF4600	12211HF4600	12211HF4600	12211HF4600	1	PIN,CRANK
7	09262H28003	09262H28003	09262H28003	09262H28003	09262H28003	09262H28003	1	BEARING,CRANK SHAFT R(28*68*18)
8	09262H350A60AO	09262H350A60AO	09262H350A60AO	09262H350A60AO	09262H350A60AO	09262H350A60AO	1	BEARING,CRANK SHAFT L(6207)
9	09282-12001	09282-12001	09282-12001	09282-12001	09282-12001	09282-12001	1	OIL SEAL CRANK SHAFT R
10	16321-04B01	16321-04B01	16321-04B01	16321-04B01	16321-04B01	16321-04B01	1	GEAR OIL PUMP DRIVE
11	21111HD6300	21111HD6300	21111HD6300	21111HD6300	21111HD6300	21111HD6300	1	GEAR PRIMARY DRIVE
12	09140-16019	09140-16019	09140-16019	09140-16019	09140-16019	09140-16019	1	NUT PRIMARY DRIVEN GEAR(M16)
13	09166-16012	09166-16012	09166-16012	09166-16012	09166-16012	09166-16012	1	WASHER PRIMARY DRIVE GEAR
14	09421-04004	09421-04004	09421-04004	09421-04004	09421-04004	09421-04004	1	KEY
15	12111HD6301PPS	12111HD6301PPS	12111HD6301PPS	12111HD6301PPS	12111HD6301PPS	12111HD6301PPS	1	PISTON
16	12151-30B00	12151-30B00	12151-30B00	12151-30B00	12151-30B00	12151-30B00	1	PIN PISTON
17	09381-15001	09381-15001	09381-15001	09381-15001	09381-15001	09381-15001	2	CIRCLIP PISTON PIN
18	12140-16E00	12140-16E00	12140-16E00	12140-16E00	12140-16E00	12140-16E00	1	RING SET, PISTON
19	12141-16E00	12141-16E00	12141-16E00	12141-16E00	12141-16E00	12141-16E00	1	RING PISTON 1ST
20	12142-16E00	12142-16E00	12142-16E00	12142-16E00	12142-16E00	12142-16E00	1	RING PISTON 2ND
21	12144-16E00	12144-16E00	12144-16E00	12144-16E00	12144-16E00	12144-16E00	1	RING PISTON OIL

NOT SALE

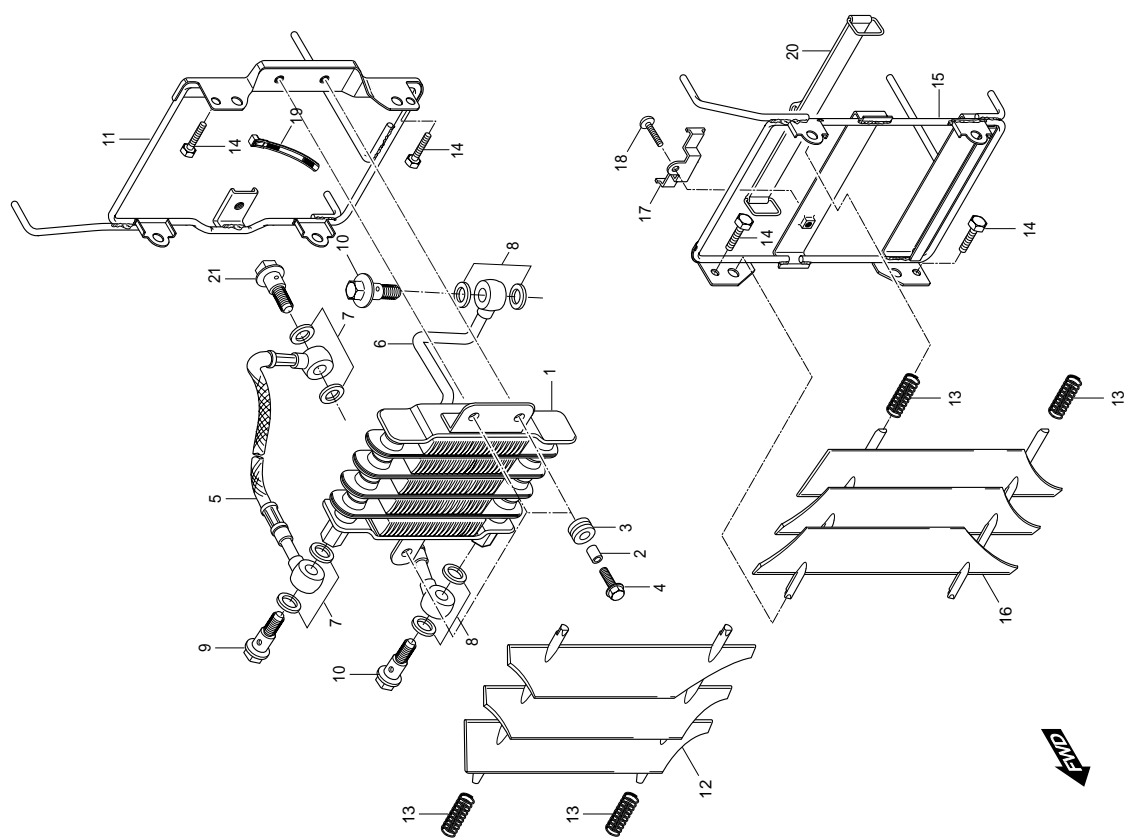
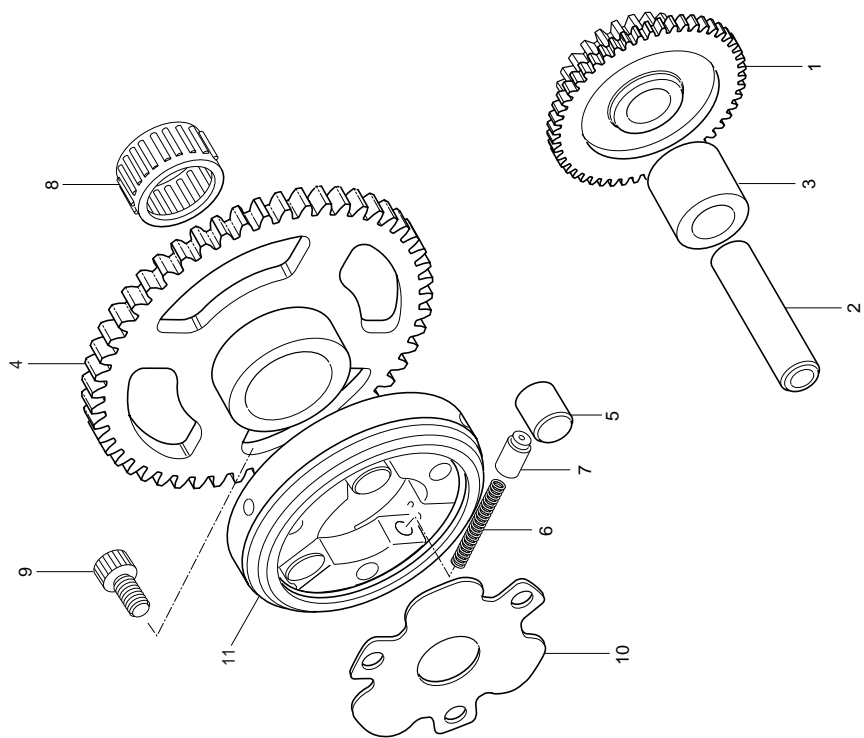
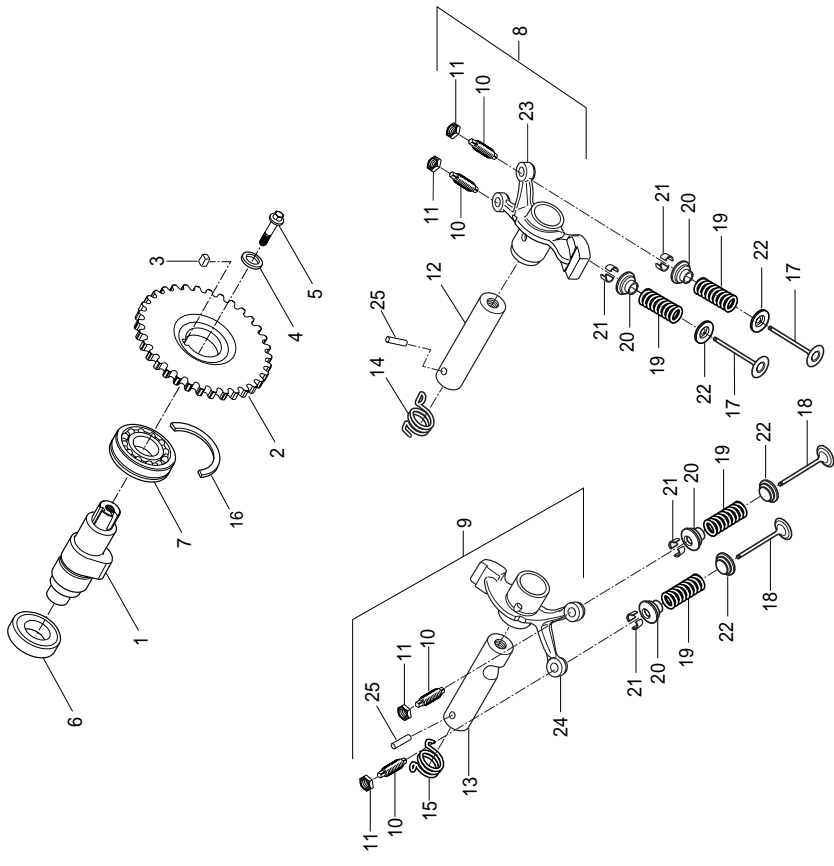


FIG 6. OIL COOER

REF	NO. ST01	PARTS NO.				PARTS NAME	Q'TY (PCS)	REMARKS
		JEU01	JEU02	NG01	JG01	KEN01		
1	16600HG5801	16600HG5801	16600HG5801	16600HG5801	16600HG5801	COOLER ASSY, OIL	1	
2	09180-06030	09180-06030	09180-06030	09180-06030	09180-06030	SPACER, OIL COOLER	3	
3	09320-10015	09320-10015	09320-10015	09320-10015	09320-10015	CHSHION, OIL COOLER	3	
4	09116-06143	09116-06143	09116-06143	09116-06143	09116-06143	BOLT, OIL COOLER	3	
5	16460HG5800	16460HG5800	16460HG5800	16460HG5800	16460HG5800	HOSE COMP, OIL COOLER NO.1	1	
6	16470HG5800	16470HG5800	16470HG5800	16470HG5800	16470HG5800	HOSE COMP, OIL COOLER NO.2	1	
7	09161-10009	09161-10009	09161-10009	09161-10009	09161-10009	GASKET, OIL COOLER HOSE NO.1	4	
8	09168-14011	09168-14011	09168-14011	09168-14011	09168-14011	GASKET, OIL COOLER HOSE NO.2	4	
9	09360HI10036	09360HI10036	09360HI10036	09360HI10036	09360HI10036	BOLT, OIL COOLER HOSE UNION NO.1	2	~ KM4PF41A741252967
9~1	09360HI10034	09360HI10034	09360HI10034	09360HI10034	09360HI10034	BOLT, OIL COOLER HOSE UNION NO.1	2	KM4PF41A741252968 ~
10	09360HI12007	09360HI12007	09360HI12007	09360HI12007	09360HI12007	BOLT, OIL COOLER HOSE UNION NO.2	2	
11	16640HG5801	16640HG5801	16640HG5801	16640HG5801	16640HG5801	BRACKET COMP, OIL COOLER	1	
12	47531HG5801	47531HG5801	47531HG5801	47531HG5801	47531HG5801	GRILLE, OIL COOLER	1	
13	09440H09001	09440H09001	09440H09001	09440H09001	09440H09001	SPRING, OIL COOLE GRILLE	4	
14	01517-06125	01517-06125	01517-06125	01517-06125	01517-06125	BOLT, OIL COOLER BRACKET(M6*12)	4	
15	47430HG5802	47430HG5802	47430HG5802	47430HG5802	47430HG5802	BRACKET COMP, TOOL BOX	1	
16	47541HG5801	47541HG5801	47541HG5801	47541HG5801	47541HG5801	GRILLE, TOOL BOX	1	
17	41327HE6100	41327HE6100	41327HE6100	41327HE6100	41327HE6100	PLATE, CDI	1	
18	02142-06128	02142-06128	02142-06128	02142-06128	02142-06128	SCREW, CDI PLATE(M6*12)	1	
19	09407-14403	09407-14403	09407-14403	09407-14403	09407-14403	CLAMP, CLUTCH CABLE ASSY	1	
20	09462-000E6	09462-000E6	09462-000E6	09462-000E6	09462-000E6	BAND, TOOL BOX	1	
21	11283HF4600	11283HF4600	11283HF4600	11283HF4600	11283HF4600	BOLT, oil pipe(M10X22)	1	







END



FIG 8. CAM SHAFT

REF	PARTS NO.				PARTS NAME	Q'TY (PCS)	REMARKS
	NO. ST01	JEU01	JEU02	NG01	JG01	KEN01	
1	12711HD6302888	12711HD6302888	12711HD6302888	12711HD6302888	12711HD6302888	1	CAM SHAFT
2	12741HD6301	12741HD6301	12741HD6301	12741HD6301	12741HD6301	1	SPROCKET,CAMSHAFT
3	09421H04004	09421H04004	09421H04004	09421H04004	09421H04004	1	KEY CAMSHAFT
4	09160H08016	09160H08016	09160H08016	09160H08016	09160H08016	1	WASH SPROCKET CENTER
5	09103H08007	09103H08007	09103H08007	09103H08007	09103H08007	1	BOLT CAMSHAFT CENTER(M8*23)
6	09262H17002	09262H17002	09262H17002	09262H17002	09262H17002	1	BEARING, CAMSHAFT NO.1(17*35*10)
7	09269H17003	09269H17003	09269H17003	09269H17003	09269H17003	1	BEARING, CAMSHAFT NO.2(17*40*12)
8	12840HD6300	12840HD6300	12840HD6300	12840HD6300	12840HD6300	1	ARM COMP,INTAKE VALVE ROCKER
9	12850HD6300	12850HD6300	12850HD6300	12850HD6300	12850HD6300	1	ARM COMP,EXHAUST VALVE ROCKER
10	12842-49201	12842-49201	12842-49201	12842-49201	12842-49201	1	SCRW TAPPET ADJUSTER
11	12843-27A00	12843-27A00	12843-27A00	12843-27A00	12843-27A00	1	NUT TAPPET ADJUSTER
12	12861HD6300	12861HD6300	12861HD6300	12861HD6300	12861HD6300	1	SHAFT VALVE ROCKET ARM NO.1
13	12871HD6300	12871HD6300	12871HD6300	12871HD6300	12871HD6300	1	SHAFT VALVE ROCKET ARM NO.2
14	09448H17008	09448H17008	09448H17008	09448H17008	09448H17008	1	SPRNG,V,ALVE ROCKER ARM NO.1
15	09448H17009	09448H17009	09448H17009	09448H17009	09448H17009	1	SPRNG,V,ALVE ROCKER ARM NO.2
16	09390H38001	09390H38001	09390H38001	09390H38001	09390H38001	1	CIRCLIP CAMSHAFT BEARING NO.2
17	12911HD6300	12911HD6300	12911HD6300	12911HD6300	12911HD6300	2	VALVE INTAKE
18	12912HD6300	12912HD6300	12912HD6300	12912HD6300	12912HD6300	2	VALVE EXHAUST
19	12921HD6300	12921HD6300	12921HD6300	12921HD6300	12921HD6300	4	SPRNG SET, VALVE
20	12931HD6300	12931HD6300	12931HD6300	12931HD6300	12931HD6300	4	RETAINER VALVE SPRING
21	12932HD6300	12932HD6300	12932HD6300	12932HD6300	12932HD6300	8	COTTER VALVE
22	12933HD6300	12933HD6300	12933HD6300	12933HD6300	12933HD6300	4	SEAT,V,ALVE SPRING
23	12840HD6300	12840HD6300	12840HD6300	12840HD6300	12840HD6300	1	ARM INTAKE VALVE ROCKER
24	12850HD6300	12850HD6300	12850HD6300	12850HD6300	12850HD6300	1	ARM EXHAUST VALVE ROCKER
25	09202H04002	09202H04002	09202H04002	09202H04002	09202H04002	2	PIN, ROCKER ARM SHAFT

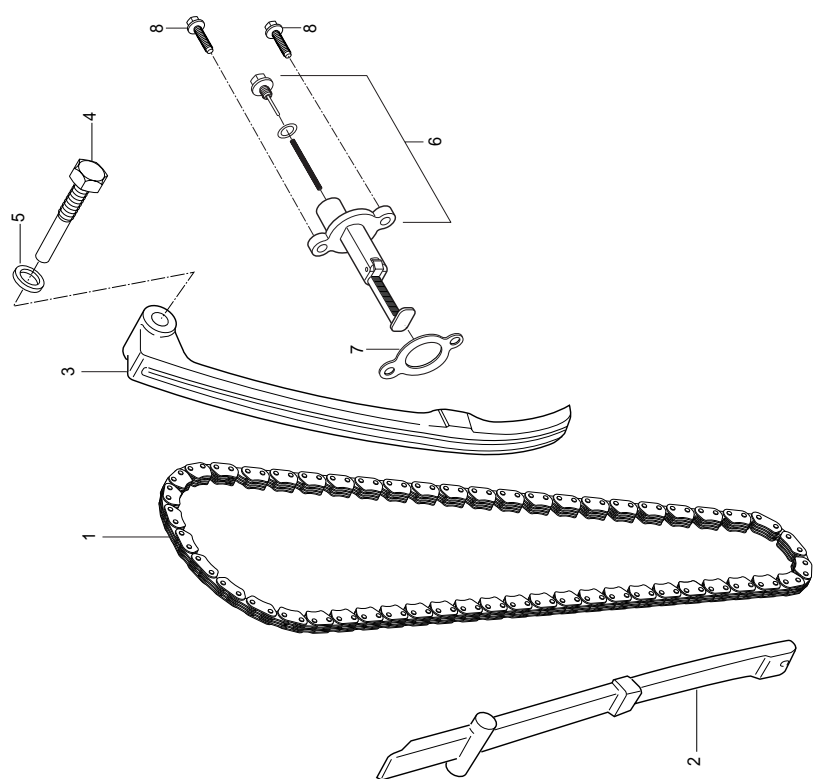


FIG 9. CAM CHAIN

REF NO. ST01	PARTS NO.				PARTS NAME	Q'TY (PCS)	REMARKS
	JEU01	JEU02	NG01	JG01	KEN01		
1	12760HD6300	12760HD6300	12760HD6300	12760HD6300	12760HD6300	1	SILENT LINK CAMSHAFT DRIVE (98LINK)
2	12771HD6300	12771HD6300	12771HD6300	12771HD6300	12771HD6300	1	GUID CAM LINK
3	12811HD6300	12811HD6300	12811HD6300	12811HD6300	12811HD6300	1	TENSIONER, CAM LINK
4	12812-32410	12812-32410	12812-32410	12812-32410	12812-32410	1	BOLT CAM LINK TENSIONER (M8*40)
5	09168-08008	09168-08008	09168-08008	09168-08008	09168-08008	1	WASHER, CAM LINK TENSIONER BOLT
6	12830H93B00	12830H93B00	12830H93B00	12830H93B00	12830H93B00	1	ADJUSTER ASS'Y, TENSIONER
7	12837H19B11	12837H19B11	12837H19B11	12837H19B11	12837H19B11	1	GASKET, TENSIONER ADJUSTER(NA)
8	01104-06208	01104-06208	01104-06208	01104-06208	01104-06208	2	BOLT, TENSIONER ADJUSTER (M6*20)

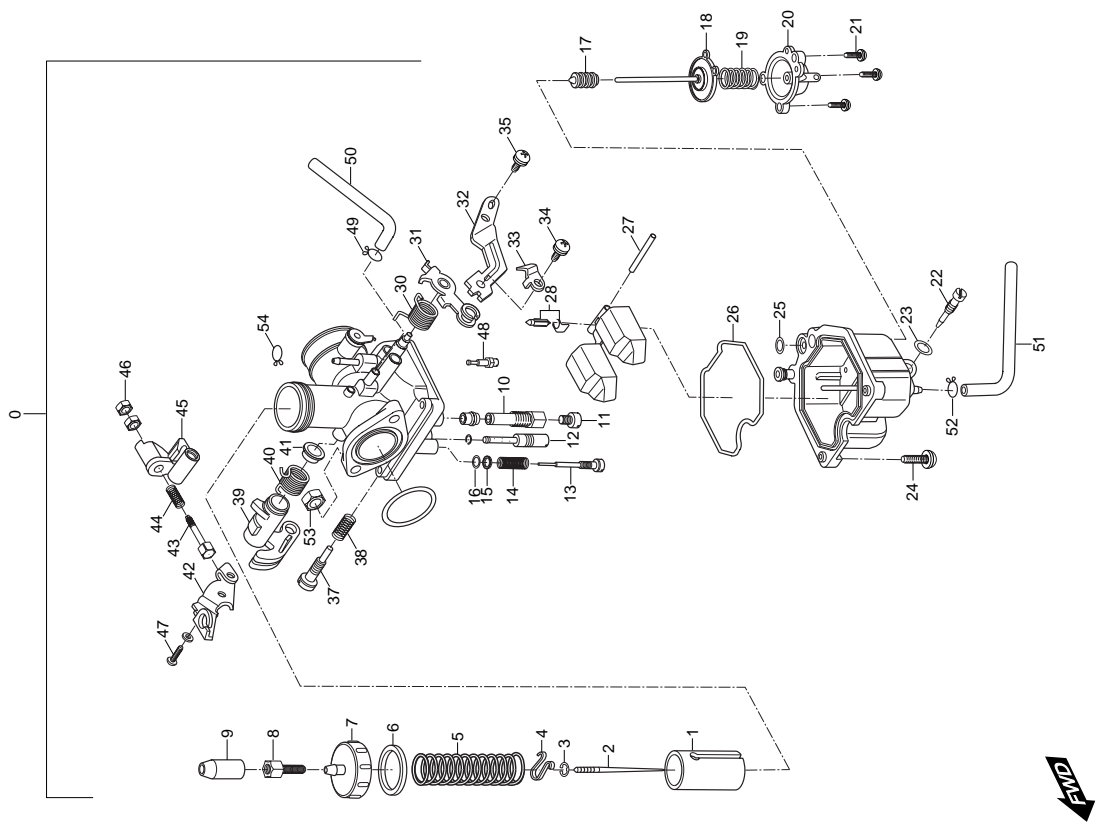
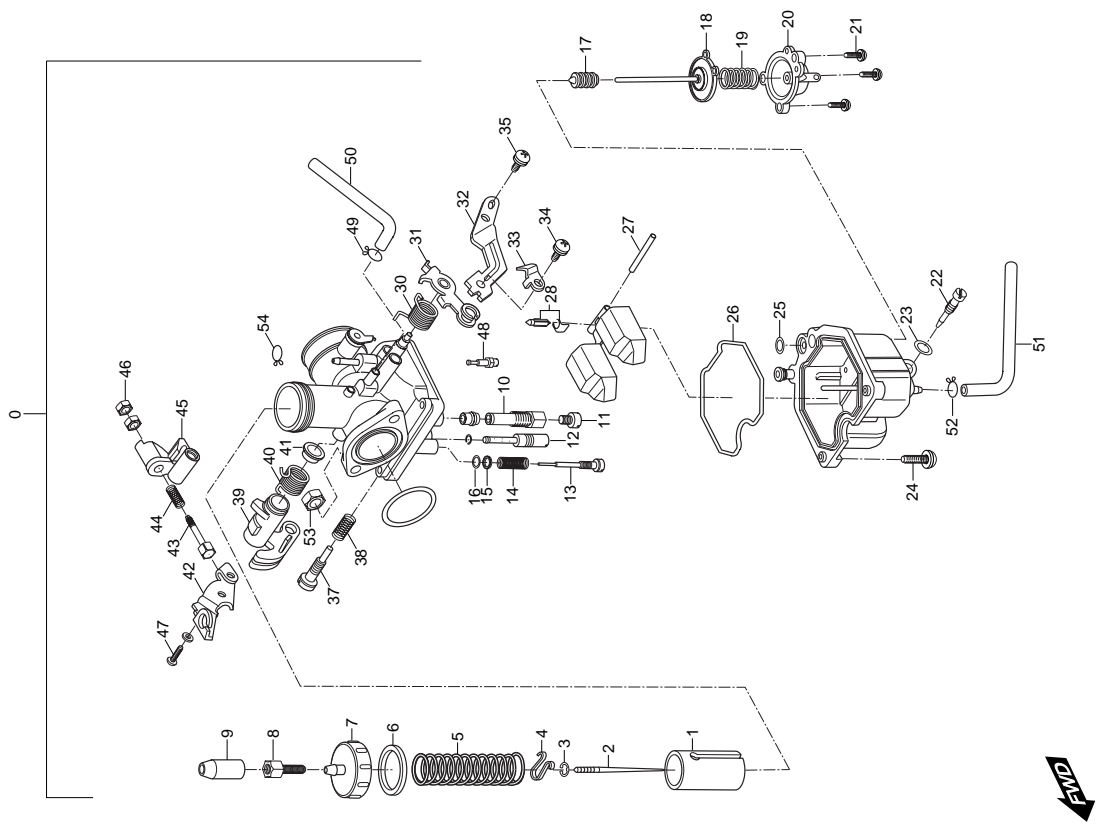


FIG 10. CARBURETOR ASS'Y

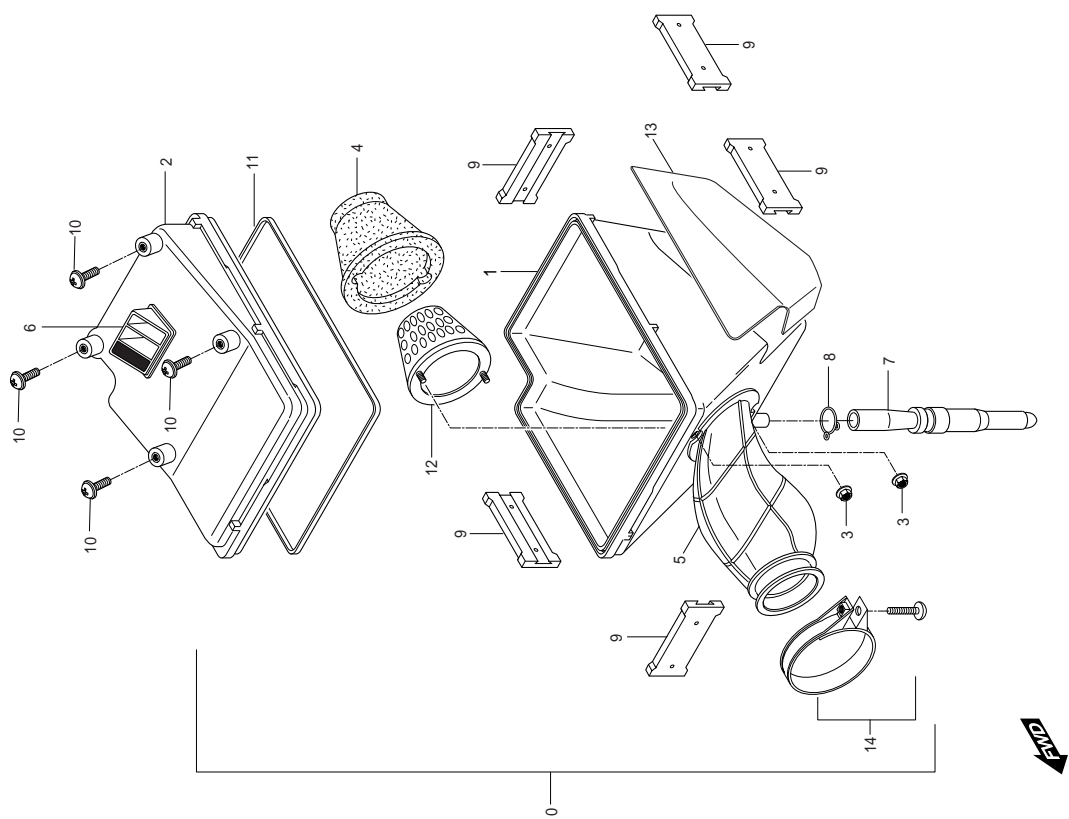
REF	PARTS NO.				PARTS NAME	Q'TY (PCS)	REMARKS
	NO. ST01	JEU01	JEU02	NG01			
					KEN01		
0	13200HG5801	13200HG5801	13200HG5801	13200HG5801	13200HG5801	1	CARBURETOR ASS'Y
1	13551HG5800	13551HG5800	13551HG5800	13551HG5800	13551HG5800	1	. VALVE, THROTTLE
2	13383HG5800	13383HG5800	13383HG5800	13383HG5800	13383HG5800	1	. NEEDLE, JET
3	13533H93B00	13533H93B00	13533H93B00	13533H93B00	13533H93B00	1	. E-RING, THROTTLE VALVE
4	13581H93B00	13581H93B00	13581H93B00	13581H93B00	13581H93B00	1	. CLIP
5	13573H93B00	13573H93B00	13573H93B00	13573H93B00	13573H93B00	1	. SPRING, THROTTLE VALVE
6	13249H93B00	13249H93B00	13249H93B00	13249H93B00	13249H93B00	1	. GASKET, TOP COVER
7	13261H93B00	13261H93B00	13261H93B00	13261H93B00	13261H93B00	1	. COVER, TOP
8	13577H93B00	13577H93B00	13577H93B00	13577H93B00	13577H93B00	1	. ADJUSTER, THROTTLE CABLE
9	13681H93B00	13681H93B00	13681H93B00	13681H93B00	13681H93B00	1	. CAP, CARBURETOR TOP
10	09494HG5800	09494HG5800	09494HG5800	09494HG5800	09494HG5800	1	. JET, NEEDLE
11	09491HG5800	09491HG5800	09491HG5800	09491HG5800	09491HG5800	1	. JET, MAIN
12	09492HG5800	09492HG5800	09492HG5800	09492HG5800	09492HG5800	1	. JET, pilot
13	13279H93B00	13279H93B00	13279H93B00	13279H93B00	13279H93B00	1	. SCREW, PILOT
14	13268H93B00	13268H93B00	13268H93B00	13268H93B00	13268H93B00	1	. SPRING, PILOT SCREW
15	13291H93B00	13291H93B00	13291H93B00	13291H93B00	13291H93B00	1	. WASHER
16	13295H93B00	13295H93B00	13295H93B00	13295H93B00	13295H93B00	1	. O-RING
17	13455H93B00	13455H93B00	13455H93B00	13455H93B00	13455H93B00	1	. CAP, SEALING
18	13460H93B00	13460H93B00	13460H93B00	13460H93B00	13460H93B00	1	. DIAPHRAGM COMP, PUMP
19	13452H93B00	13452H93B00	13452H93B00	13452H93B00	13452H93B00	1	. SPRING, PUMP DIAPHRAGM
20	13450H93B00	13450H93B00	13450H93B00	13450H93B00	13450H93B00	1	. COVER COMP, PUMP
21	02112-44126	02112-44126	02112-44126	02112-44126	02112-44126	3	. SCREW(M44*12)
22	13247H93B00	13247H93B00	13247H93B00	13247H93B00	13247H93B00	1	. SCREW, DRAIN
23	13278H93B00	13278H93B00	13278H93B00	13278H93B00	13278H93B00	1	. O-RING, DRAIN SCREW
24	02112-44166	02112-44166	02112-44166	02112-44166	02112-44166	3	. SCREW(M44*16)
25	13297H93B00	13297H93B00	13297H93B00	13297H93B00	13297H93B00	1	. O-RING
26	13258H93B00	13258H93B00	13258H93B00	13258H93B00	13258H93B00	1	. GASKET, FOLAT CHAMBER
27	13250HG5800	13250HG5800	13250HG5800	13250HG5800	13250HG5800	1	. FLOAT COMP
28	13370HG5800	13370HG5800	13370HG5800	13370HG5800	13370HG5800	1	. VALVE ASSY, NEEDLE
29	13410H93B00	13410H93B00	13410H93B00	13410H93B00	13410H93B00	1	. SHAFT ASSY, CHOKE
30	13472H93B00	13472H93B00	13472H93B00	13472H93B00	13472H93B00	1	. SPRING
31	13411H93B00	13411H93B00	13411H93B00	13411H93B00	13411H93B00	1	. LEVER, CHOKE
32	13413H93B00	13413H93B00	13413H93B00	13413H93B00	13413H93B00	1	. STAY, CHOKE WIRE



FWD

FIG 10. CARBURETOR ASS'Y

REF	PARTS NO.				PARTS NAME	Q'TY (PCS)	REMARKS
	NO. ST01	JEU01	JEU02	NG01			
				JG01	KEN01		
33	13415H93B00	13415H93B00	13415H93B00	13415H93B00	13415H93B00	1	.PLATE,STAY
34	02112-45126	02112-45126	02112-45126	02112-45126	02112-45126	1	.SCREW,STAY PLATE(M5*12)
35	02112-44086	02112-44086	02112-44086	02112-44086	02112-44086	1	.SCREW,CHOKE WIRE STAY(M4*8)
36	13277H93B00	13277H93B00	13277H93B00	13277H93B00	13277H93B00	1	.O-RING
37	13267H93B00	13267H93B00	13267H93B00	13267H93B00	13267H93B00	1	.ADJUSTER,THROTTLE VALVE STOP
38	13268H93B00	13268H93B00	13268H93B00	13268H93B00	13268H93B00	1	.SPRING,THROTTLE STOP
39	13441H93B00	13441H93B00	13441H93B00	13441H93B00	13441H93B00	1	.PUMP ARM-B
40	13443H93B00	13443H93B00	13443H93B00	13443H93B00	13443H93B00	1	.SPRING,PUMP ARM-B
41	13442H93B00	13442H93B00	13442H93B00	13442H93B00	13442H93B00	1	.GUIDE,PUMP ARM-B SPRING
42	13449H93B00	13449H93B00	13449H93B00	13449H93B00	13449H93B00	1	.STAY,PLATE PUMP ARM
43	13447H93B00	13447H93B00	13447H93B00	13447H93B00	13447H93B00	1	.ADJUSTER,PUMP
44	13446H93B00	13446H93B00	13446H93B00	13446H93B00	13446H93B00	1	.SPRING,PUMP ARM-A
45	13445H93B00	13445H93B00	13445H93B00	13445H93B00	13445H93B00	1	.PUMP ARM-A
46	08310-31046	08310-31046	08310-31046	08310-31046	08310-31046	1	.NUT,PUMP ADJUSTER
47	02112-45146	02112-45146	02112-45146	02112-45146	02112-45146	1	.SCREW,PUMP ARM STAY PLATE(M5*14)
48	13448H93B00	13448H93B00	13448H93B00	13448H93B00	13448H93B00	1	.NOZZLE,PUMP
49	09401-08401	09401-08401	09401-08401	09401-08401	09401-08401	1	CLIP FUEL HOSE
50	13684H93B00	13684H93B00	13684H93B00	13684H93B00	13684H93B00	1	.HOSE
51	13683H93B00	13683H93B00	13683H93B00	13683H93B00	13683H93B00	1	.HOSE
52	09401-08401	09401-08401	09401-08401	09401-08401	09401-08401	1	CLIP
53	08316-16068	08316-16068	08316-16068	08316-16068	08316-16068	2	NUT, CARBURETER (M6)
54	09407-14403	09407-14403	09407-14403	09407-14403	09407-14403	1	CLMP CARBURTER AIR VENT
							NOT SALE



**FWD**



FIG 11. AIR CLEANER

REF	PARTS NO.				PARTS NAME	Q'TY (PCS)	REMARKS
	NO. ST01	JEU01	JEU02	NG01			
0	13700HG5801	13700HG5801	13700HG5801	13700HG5801	CLEANER ASS'Y, AIR	1	~ KM4PF41A641202817
0~1		13700HG5870	13700HG5870	13700HG5870	CLEANER ASS'Y, AIR	1	KM4PF41A641202818 ~
1	13720HG5800	13720HG5800	13720HG5800	13720HG5800	CASE COMP, AIR CLEANER	1	
2	13740HG5800	13740HG5800	13740HG5800	13740HG5800	CAP COMP, AIR CLEANER	1	
3	08316-16068	08316-16068	08316-16068	08316-16068	NUT, FILTER TRAP(M6)	2	
4	13780HG5800	13780HG5800	13780HG5800	13780HG5800	FILTER COMP, AIR CLEANER	1	
5	13881HG5801	13881HG5801	13881HG5801	13881HG5801	TUBE, OUTLET	1	
6	13891HG5800	13891HG5800	13891HG5800	13891HG5800	TUBE, INET	1	
7	13870-11124	13870-11124	13870-11124	13870-11124	TUBE COMP, DRAIN	1	
8	13824-05331	13824-05331	13824-05331	13824-05331	CLIP, DRAIN TUBE	1	
9	13821H11210	13821H11210	13821H11210	13821H11210	SLIDER, AIR CLEANER	5	
10	02142-15125	02142-15125	02142-15125	02142-15125	BOLT, AIR CLEANER(M5*12)	4	
11	13722HG5800	13722HG5800	13722HG5800	13722HG5800	GASKET, AIR CLEANER	1	
12	13750HG5800	13750HG5800	13750HG5800	13750HG5800	FRAME COMP, FILTER TRAP	1	
13	13723HG5800	13723HG5800	13723HG5800	13723HG5800	HEAT SHLD, AIR CLEANER	1	
14	09402-44207	09402-44207	09402-44207	09402-44207	CLAMP, OUTLET TUBE CARBURETOR	1	

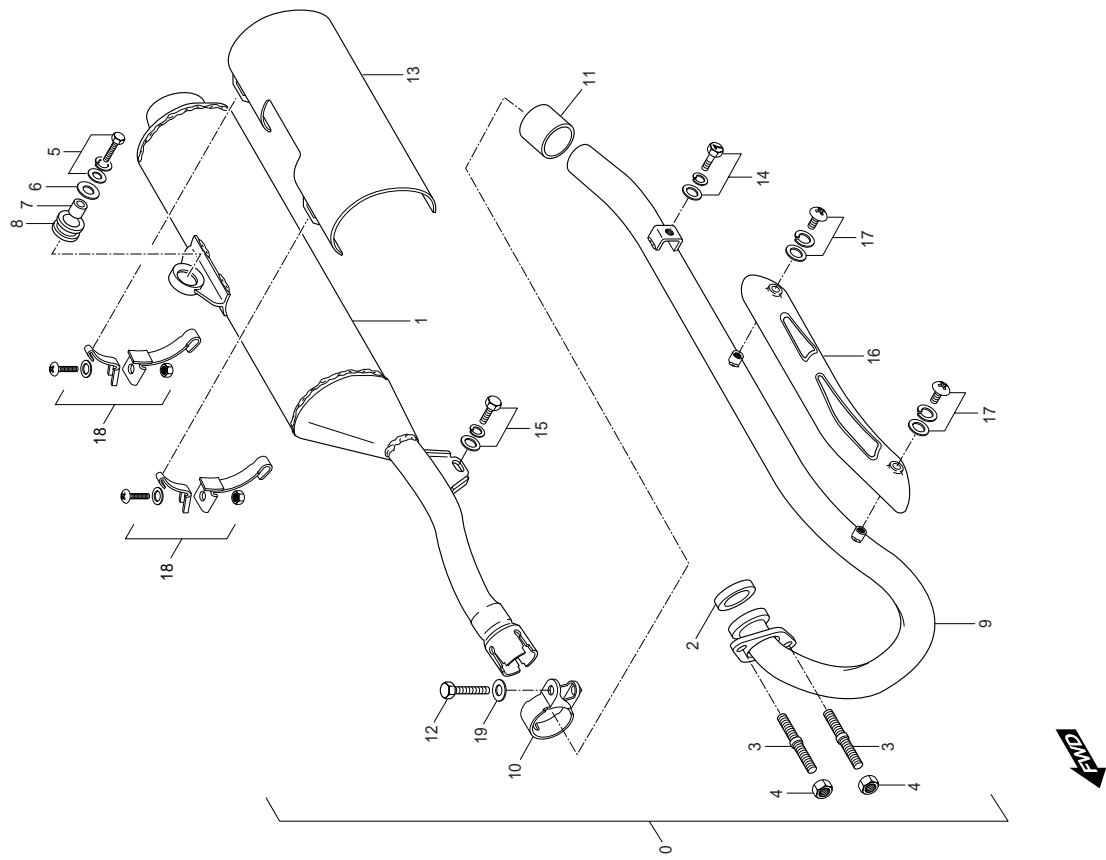
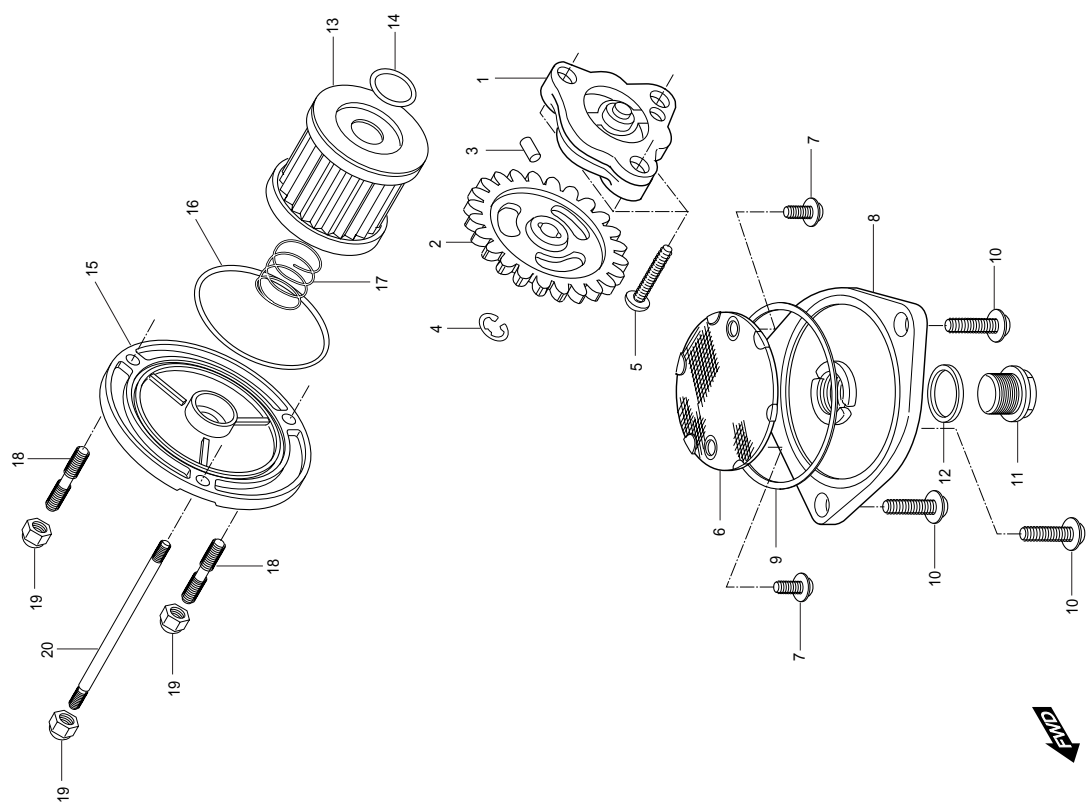


FIG 12. MUFFLER

REF	PARTS NO.					PARTS NAME	Q'TY (PCS)	REMARKS
	NO. ST01	JEU01	JEU02	NG01	JG01			
0	14305HG5800	14305HG5800	14305HG5800	14305HG5800	14305HG5800	MUFFLER ASS'Y	1	NOT SALE
1	14310HG5805PAM	14310HG5805PAM	14310HG5805PAM	14310HG5805PAM	14310HG5805PAM	BODY COMP, MUFFLER	1	
2	14181-17C00	14181-17C00	14181-17C00	14181-17C00	14181-17C00	GASKET, EXHAUST PIPE	1	
3	01421-08258	01421-08258	01421-08258	01421-08258	01421-08258	STUD BOLT,EXHAUST PIPE(M8*25)	2	
4	08316-26086	08316-26086	08316-26086	08316-26086	08316-26086	NUT, EXHAUST PIPE(M8)	2	
5	09118H08041	09118H08041	09118H08041	09118H08041	09118H08041	BPLT, MUFFLER SUPPORT(M8*35)	1	
6	09160-08004	09160-08004	09160-08004	09160-08004	09160-08004	WASHER MUFFLER SUPPORT	1	
7	09180H08102	09180H08102	09180H08102	09180H08102	09180H08102	SPACER, MUFFLER SUPPORT	1	
8	09320-12026	09320-12026	09320-12026	09320-12026	09320-12026	CUSHION, MUFFLER SUPPORT	1	
9	14150HG5803PAM	14150HG5803PAM	14150HG5803PAM	14150HG5803PAM	14150HG5803PAM	PIPE COMP, EXHAUST	1	
10	14770HG5802PAM	14770HG5802PAM	14770HG5802PAM	14770HG5802PAM	14770HG5802PAM	CONNECT COMP, EXHAUST PIPE	1	
11	14773HG5800	14773HG5800	14773HG5800	14773HG5800	14773HG5800	GASKET,CONNECTOR EXHAUST PIPE	1	
12	01517-08468	01517-08468	01517-08468	01517-08468	01517-08468	BOLT CONNECTOR EXHAUST PIPE(M8*16	1	
13	14781HG5803	14781HG5803	14781HG5803	14781HG5803	14781HG5803	COVER MUFFLER	1	
14	01187-08168	01187-08168	01187-08168	01187-08168	01187-08168	BOLT,EXHAUST PIPE SUPPORT BRACKET	1	
15	01187-08168	01187-08168	01187-08168	01187-08168	01187-08168	BOLT,EXHAUST SUPPORT FRONT BRACK	1	
16	14186HG580103S	14186HG580103S	14186HG580103S	14186HG580103S	14186HG580103S	COVER,EXHAUST	1	
17	02112-96105	02112-96105	02112-96105	02112-96105	02112-96105	SCREW,EXHAUST COVER(M5*8)	2	
18	14790HG5801	14790HG5801	14790HG5801	14790HG5801	14790HG5801	CLAMP ASSY,MUFFLER COVER	2	
19	08322-21088	08322-21088	08322-21088	08322-21088	08322-21088	WASHER, EXHAUST PIPE CONNECTOR	1	NOT SALE
20	14760HG5801PLA	14760HG5801PLA	14760HG5801PLA	14760HG5801PLA	14760HG5801PLA	PROTECTOR ASS.Y, muffler body	1	



**END**

FIG 13. OIL PUMP

REF	PARTS NO.				PARTS NAME	Q'TY (PCS)	REMARKS
	NO. ST01	JEU01	JEU02	NG01			
				JG01	KEN01		
1	16400HF4600	16400HF4600	16400HF4600	16400HF4600	16400HF4600	1	PUMP ASS'Y, oil
2	16331H93B00	16331H93B00	16331H93B00	16331H93B00	16331H93B00	1	GEAR, OIL PUMP DRIVEN
3	09261-02008	09261-02008	09261-02008	09261-02008	09261-02008	1	PIN OIL PUMP DRIVEN GEAR
4	08332-11069	08332-11069	08332-11069	08332-11069	08332-11069	1	CIRCLIP, OIL PUMP DRIVEN GEAR
5	02112-06258	02112-06258	02112-06258	02112-06258	02112-06258	3	SCREW , ENGINE OIL PUMP(M6*25)
6	16520-05202	16520-05202	16520-05202	16520-05202	16520-05202	1	STRAINER COMP, ENGINE OIL
7	02112-95126	02112-95126	02112-95126	02112-95126	02112-95126	2	SCREW ENGINE OIL STRAINER(M5*12)
8	16523-05200	16523-05200	16523-05200	16523-05200	16523-05200	1	CAP OIL STRAINER
9	09280-60005	09280-60005	09280-60005	09280-60005	09280-60005	1	O-RING, OIL STRAINER CAP
10	01547-06208	01547-06208	01547-06208	01547-06208	01547-06208	3	SCREW, OIL STRAINER CAP(M6*20)
11	09247-14002	09247-14002	09247-14002	09247-14002	09247-14002	1	PLUG OIL DRAIN
12	09168H14003	09168H14003	09168H14003	09168H14003	09168H14003	1	GASKET, DRAIN PLUG
13	16510-05240	16510-05240	16510-05240	16510-05240	16510-05240	1	FILTER COMP, ENGINE OIL
14	09280-13004	09280-13004	09280-13004	09280-13004	09280-13004	1	O-RING, OIL FILTER
15	16512HG580103S	16512HG580103S	16512HG580103S	16512HG580103S	16512HG580103S	1	CAP,OIL FILTER
16	09280-54001	09280-54001	09280-54001	09280-54001	09280-54001	1	O-RING, OIL FILTER CAP
17	09440-18002	09440-18002	09440-18002	09440-18002	09440-18002	1	SPRNG, OIL FILTER CAP
18	01421-06128	01421-06128	01421-06128	01421-06128	01421-06128	2	STUD BOLT, OIL FILTER CAP(M6*12)
19	08313-11068	08313-11068	08313-11068	08313-11068	08313-11068	3	NUT, OIL FILTER CAP(M11)
20	01421-06958	01421-06958	01421-06958	01421-06958	01421-06958	1	STUD BOLT, OIL FILTER CAP(M6*95)
21	16419HG5100	16419HG5100	16419HG5100	16419HG5100	16419HG5100	1	BUSH, oil pump
22	09206-08001	09206-08001	09206-08001	09206-08001	09206-08001	2	PIN, oil pump knock

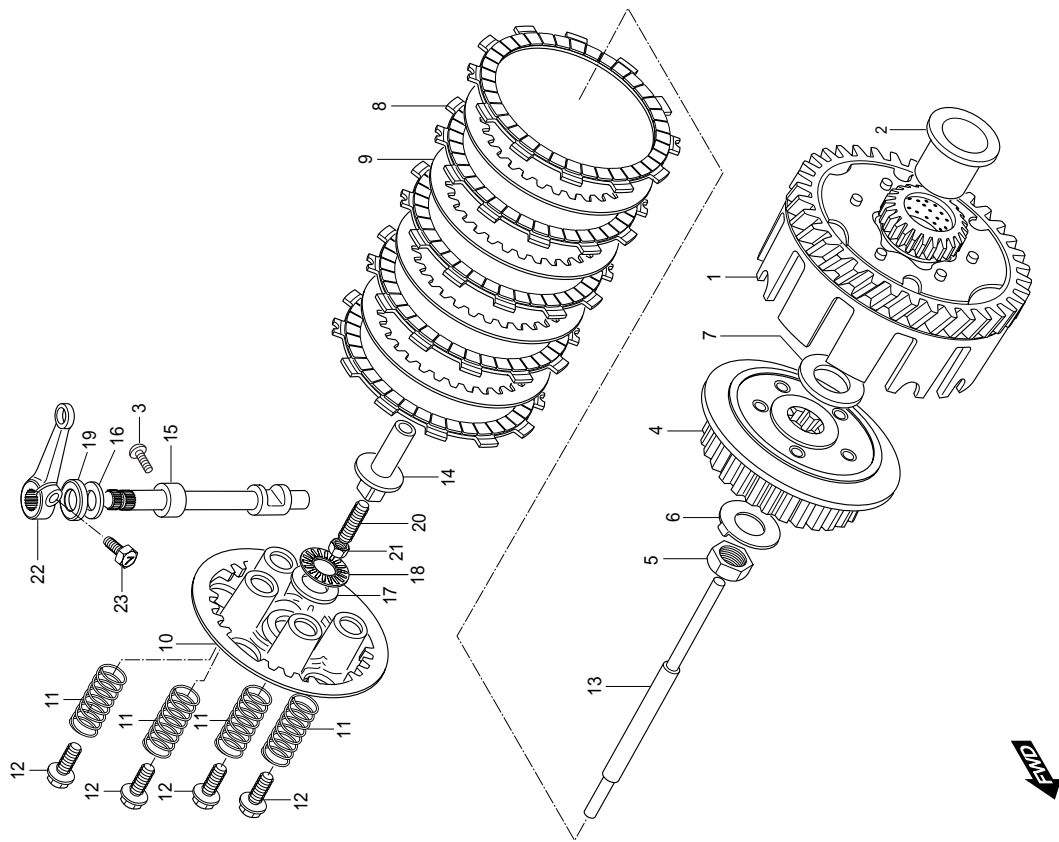


FIG 14. CLUTCH ASS'Y

REF	PARTS NO.				PARTS NAME	Q'TY (PCS)	REMARKS
	NO. ST01	JEU01	JEU02	NG01	JG01	KEN01	
1	21200HD6300HPA	21200HD6300HPA	21200HD6300HPA	21200HD6300HPA	21200HD6300HPA	GEAR ASS'Y PRIMARY DRIVEN	1
2	21251H13E00	21251H13E00	21251H13E00	21251H13E00	21251H13E00	SPACER PRIMARY DRIVEN GEAR	1
3	02142-06108	02142-06108	02142-06108	02142-06108	02142-06108	STOPPER, CLUTCH RELEASE CAMSHAFT	1
4	21411-05200	21411-05200	21411-05200	21411-05200	21411-05200	HUB, CLUTCH SLEEVE	1
5	09140-16014	09140-16014	09140-16014	09140-16014	09140-16014	NUT CLUTCH SLEEVE HUB(M16)	1
6	09169-16003	09169-16003	09169-16003	09169-16003	09169-16003	WASHER CLUTCH SLEEVE HUB	1
7	08211-20352	08211-20352	08211-20352	08211-20352	08211-20352	THRUST WASHER, CLUTCH SLEEVE HUB	1
8	21441-13A01	21441-13A01	21441-13A01	21441-13A01	21441-13A01	PLATE CLUTCH DRIVE	5
9	21451-28000	21451-28000	21451-28000	21451-28000	21451-28000	PLATE CLUTCH DRIVEN	4
10	21462-14102	21462-14102	21462-14102	21462-14102	21462-14102	DISK, CLUTCH PRESSURE	1
11	09440-15014	09440-15014	09440-15014	09440-15014	09440-15014	SPRING CLUTCH	5
12	09116-05003	09116-05003	09116-05003	09116-05003	09116-05003	BOLT CLUTCH SPRING(M5*16)	5
13	23110-05202	23110-05202	23110-05202	23110-05202	23110-05202	ROD COMP, CLUTCH PUSH	1
14	23121-38201	23121-38201	23121-38201	23121-38201	23121-38201	PIECE CLUTCH PUSH	1
15	23122-05200	23122-05200	23122-05200	23122-05200	23122-05200	CAM SH CLUTCH RELEASE	1
16	08211-10201	08211-10201	08211-10201	08211-10201	08211-10201	THRUST WASHER, CLUTCH RELEASE CAI	1
17	09160-15015	09160-15015	09160-15015	09160-15015	09160-15015	THRUST WASHER, CLUTCH RELEASE	1
18	09263H15001	09263H15001	09263H15001	09263H15001	09263H15001	THRUST WASHER, CLUTCH RELEASE	1
19	09282-10007	09282-10007	09282-10007	09282-10007	09282-10007	OIL SEAL CLUTCH RELEASE CAMSHAFT(	1
20	09134-06010	09134-06010	09134-06010	09134-06010	09134-06010	SCREW, CLUTCH RELEASE ADJUSTER	1
21	08310-22068	08310-22068	08310-22068	08310-22068	08310-22068	NUT CLUTCH RELEASE ADJUSTER(M6)	1
22	23271HJ8250	23271HJ8250	23271HJ8250	23271HJ8250	23271HJ8250	ARM CLUTCH RELEASE	1
23	01107-06168	01107-06168	01107-06168	01107-06168	01107-06168	BOLT, CLUTCH RELEASE ARM(M6*16))	1

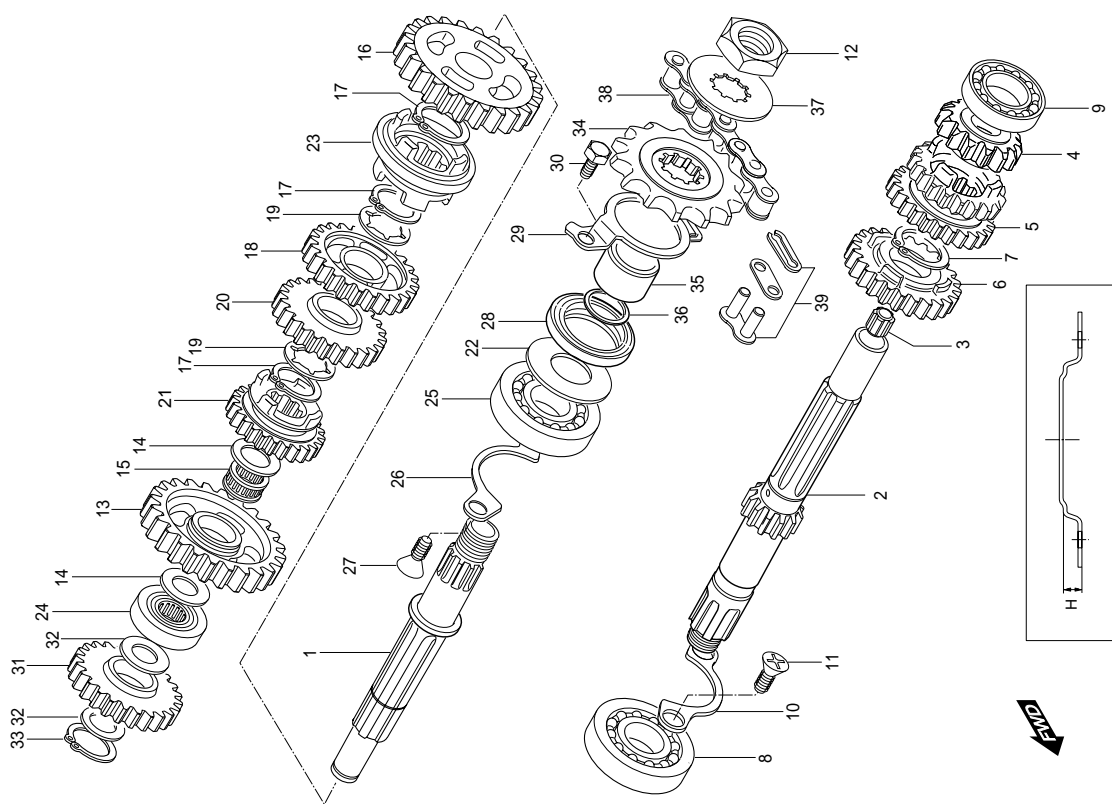
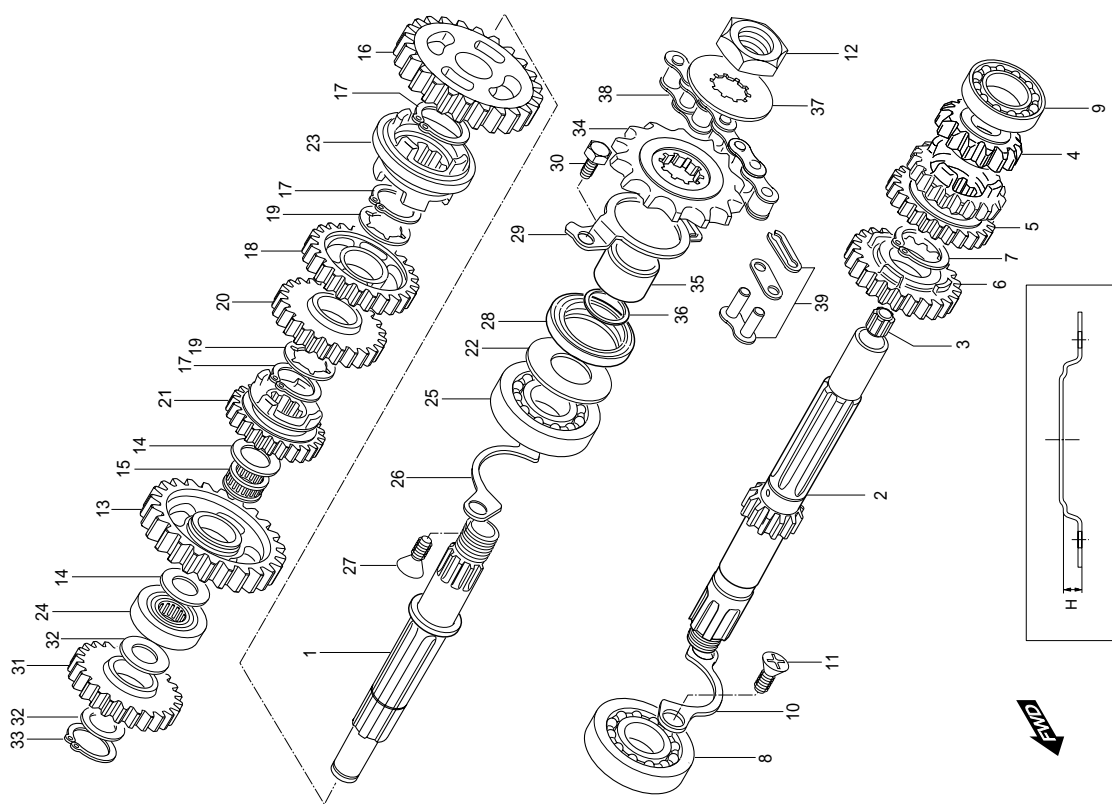


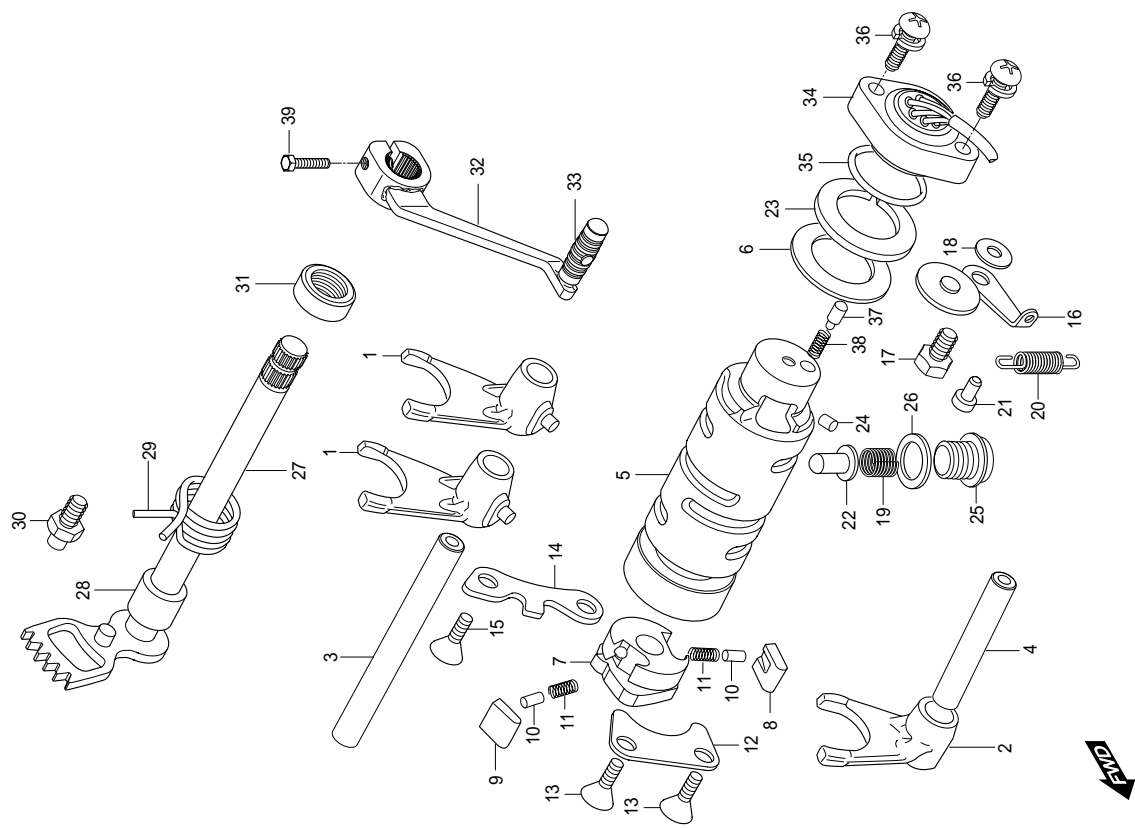


FIG 15. TRANSMISSION

REF	PARTS NO.				PARTS NAME	Q'TY (PCS)	REMARKS
	NO. ST01	JEU01	JEU02	NG01			
					JG01	KEN01	
1	24130HG5800	24130HG5800	24130HG5800	24130HG5800	24130HG5800	1	SHAFT COMP,DRIVE
2	24121-05211	24121-05211	24121-05211	24121-05211	24121-05211	1	SHAFT COMP,COUNTER
3	24125-38201	24125-38201	24125-38201	24125-38201	24125-38201	1	BUSH, COUNTER SHAFT
4	24221-29B00	24221-29B00	24221-29B00	24221-29B00	24221-29B00	1	GR 2ND DRIVE
5	24231-29B10	24231-29B10	24231-29B10	24231-29B10	24231-29B10	1	GR 3RD/4TH DRIVE
6	24251-05202	24251-05202	24251-05202	24251-05202	24251-05202	1	GEAR 5TH DRIVE
7	09380-20009	09380-20009	09380-20009	09380-20009	09380-20009	1	CIRCLIP, 5TH DRIVE GEAR
8	09262-20062	09262-20062	09262-20062	09262-20062	09262-20062	1	BEARING, COUNTER SHAFT R
9	08123-60020	08123-60020	08123-60020	08123-60020	08123-60020	1	BEARING, COUNTER SHAFT L(6002)
10	24741-05200	24741-05200	24741-05200	24741-05200	24741-05200	1	RETAINER COUNTER SHAFT BEARING
11	02122-06128	02122-06128	02122-06128	02122-06128	02122-06128	2	SCREW, COUNTER SHAFT BEARING RET <sup>A</sup>
12	09140-16017	09140-16017	09140-16017	09140-16017	09140-16017	1	NUT ENGINE SPROCKET(M16)
13	24311-29B00	24311-29B00	24311-29B00	24311-29B00	24311-29B00	1	GEAR, 1ST DRIVEN
14	08211-15251	08211-15251	08211-15251	08211-15251	08211-15251	2	THRUST WASHER, 1ST DRIVEN GEAR
15	09263HI15002	09263HI15002	09263HI15002	09263HI15002	09263HI15002	1	BEARING 1ST DRIVEN GEAR(15*19*8)
16	24320-29B00	24320-29B00	24320-29B00	24320-29B00	24320-29B00	1	GEAR 2ND DRIVEN
17	09380-20009	09380-20009	09380-20009	09380-20009	09380-20009	3	CIRCLIP, 4TH DRIVEN GEAR
18	24331-05201	24331-05201	24331-05201	24331-05201	24331-05201	1	GEAR, 3RD DRIVEN
19	09167-20011	09167-20011	09167-20011	09167-20011	09167-20011	2	THRUST WASHER, 3&4RD DRIVEN GEAR
20	24341-29B10	24341-29B10	24341-29B10	24341-29B10	24341-29B10	1	GEAR, 4TH DRIVEN
21	24351-05201	24351-05201	24351-05201	24351-05201	24351-05201	1	GEAR, 5TH DRIVEN
22	24359-05200	24359-05200	24359-05200	24359-05200	24359-05200	1	WASHER, OIL SEALING
23	24421-05300	24421-05300	24421-05300	24421-05300	24421-05300	1	WHEEL, SLIDING DOG
24	09263HI15003	09263HI15003	09263HI15003	09263HI15003	09263HI15003	1	BEARING, DRIVE SHAFT R(15*33*12)
25	08113-62040	08113-62040	08113-62040	08113-62040	08113-62040	1	BEARING, DRIVE SHAFT L(6204)
26	24741-05200	24741-05200	24741-05200	24741-05200	24741-05200	1	RETAINER, DRIVE SHAFT BEARING
27	02122-06128	02122-06128	02122-06128	02122-06128	02122-06128	2	SCREW, DRIVE SHAFT BEARING RETAINE
28	09283-27010	09283-27010	09283-27010	09283-27010	09283-27010	1	OIL SEAL, DRIVE SHAFT(27*40*6)
29	24751-05201	24751-05201	24751-05201	24751-05201	24751-05201	1	RETAINER, DRIVE SHAFT OIL SEAL
30	01107-06106	01107-06106	01107-06106	01107-06106	01107-06106	2	BOLT, DRIVE SHAFT OIL SEAL RETAINER
31	26260-05201	26260-05201	26260-05201	26260-05201	26260-05201	1	GEAR COMP, KICK STARTER IDLE
32	08211-15201	08211-15201	08211-15201	08211-15201	08211-15201	2	THRUST WASHER, KICK STARTER IDLE
33	08331-31159	08331-31159	08331-31159	08331-31159	08331-31159	1	CIRCLIP, KICK STARTER IDLE GEAR







END

**FIG 16. GEAR SHIFTING**

REF	PARTS NO.					REMARK
	NO. ST01	JEU01	JEU02	NG01	JG01	

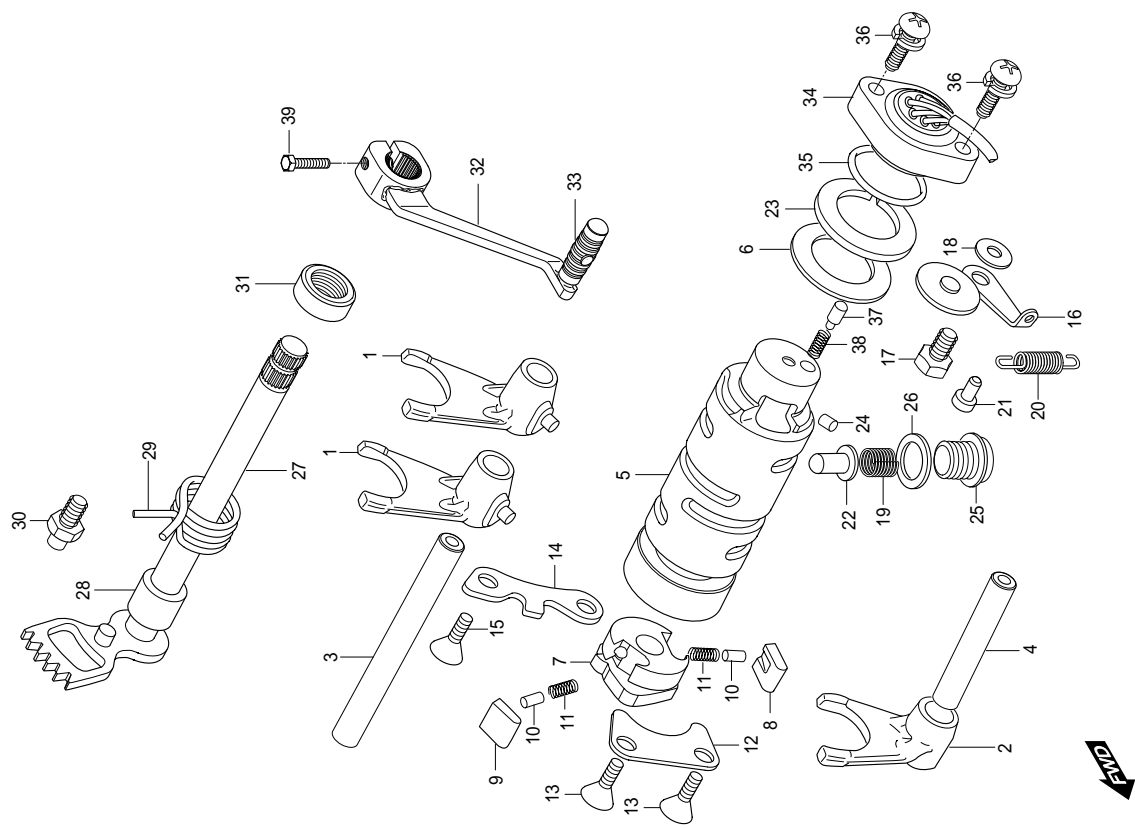
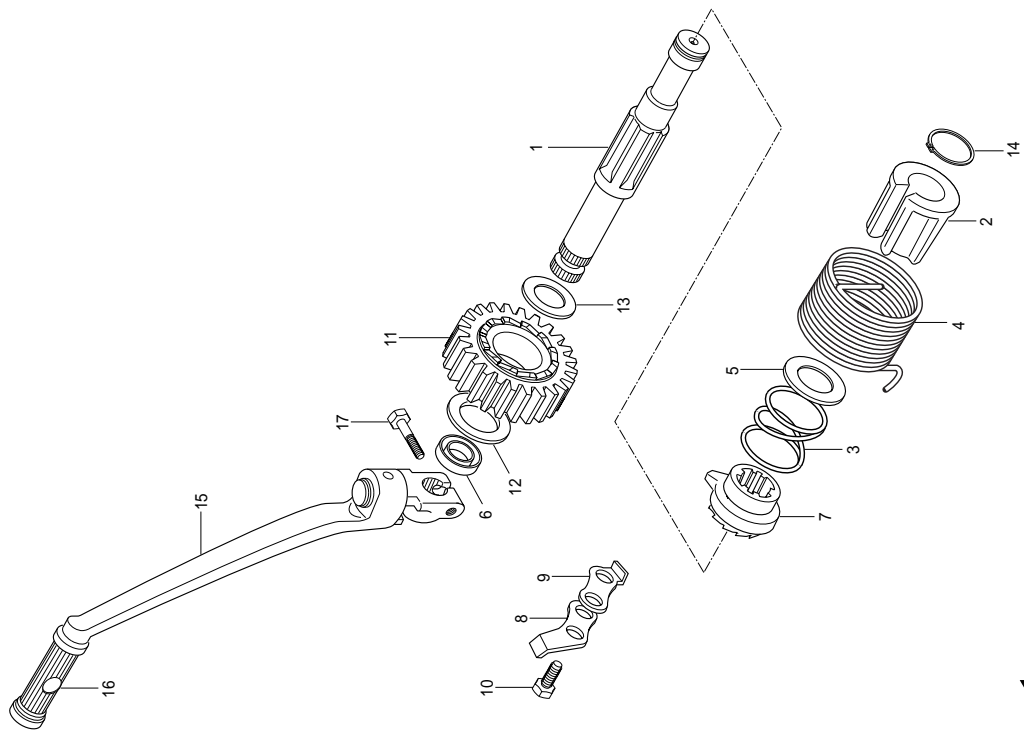


FIG 16. GEAR SHIFTING

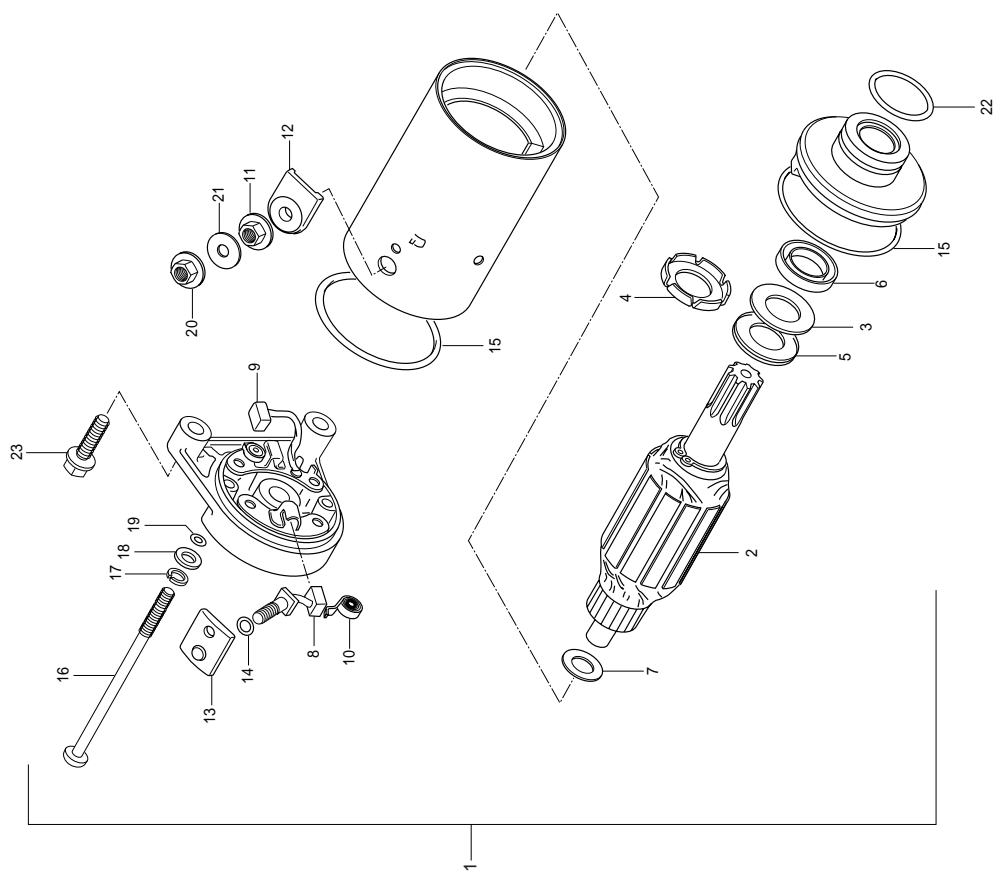
REF NO. ST01	PARTS NO.				PARTS NAME	Q'TY (PCS)	REMARKS
	JEU01	JEU02	NG01	JG01	KEN01		
34	37720HG5800	37720HG5800	37720HG5800	37720HG5800	37720HG5800	1	SWITCH ASS'Y NEUTRAL
35	09280-26003	09280-26003	09280-26003	09280-26003	09280-26003	1	O-RING, GEAR SHIFT SWITCH
36	02112-95208	02112-95208	02112-95208	02112-95208	02112-95208	2	SCREW, GEAR SHIFT SWITCH(M5*20)
37	09209-05011	09209-05011	09209-05011	09209-05011	09209-05011	1	CONTACT, GEAR SHIFT SWITCH
38	09440-04010	09440-04010	09440-04010	09440-04010	09440-04010	1	SPRING, GEAR SHIFT SWITCH CONTACT
39	01104-06208	01104-06208	01104-06208	01104-06208	01104-06208	1	BOLT, GEAR SHIFT LEVER(M6*60)



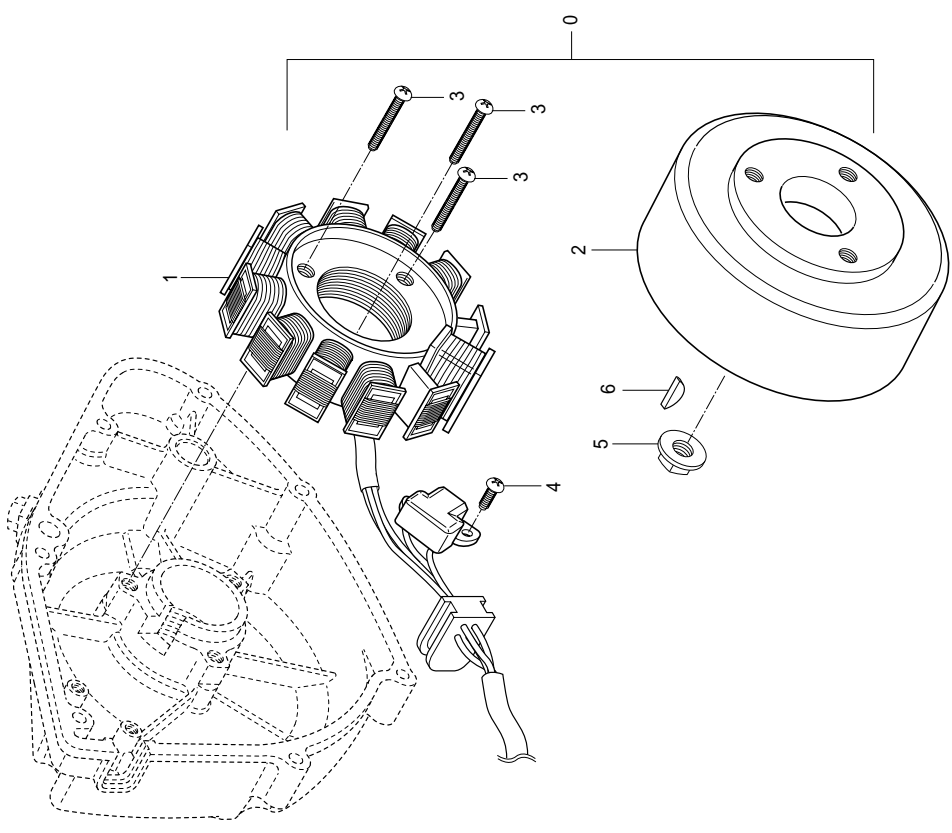
END









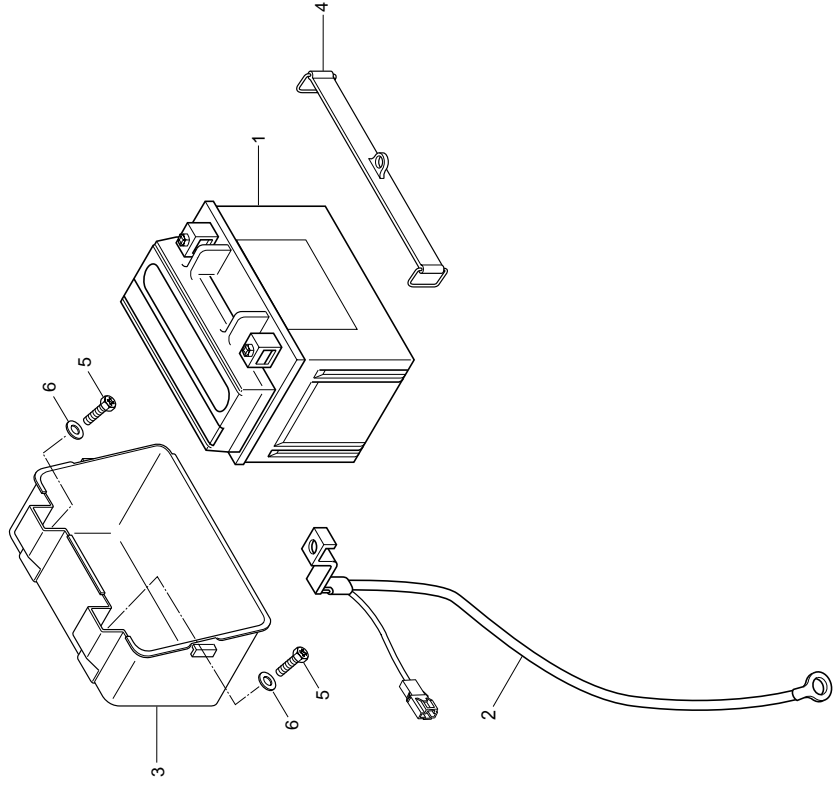


END

FIG 19. MAGONTO

REF NO. ST01	PARTS NO.			PARTS NAME	Q'TY (PCS)	REMARKS
	JEU01	JEU02	NG01	JG01	KEN01	
0	32100HG5800	32100HG5800	32100HG5800	32100HG5800	32100HG5800	MAGNETO ASS'Y
1	32101HG5800	32101HG5800	32101HG5800	32101HG5800	32101HG5800	STATOR ASS'Y
2	32102HG5800	32102HG5800	32102HG5800	32102HG5800	32102HG5800	ROTOR ASS'Y
3	02112-05258	02112-05258	02112-05258	02112-05258	02112-05258	SCREW, MAGNOTO STARTER(M5*25)
4	02112-05128	02112-05128	02112-05128	02112-05128	02112-05128	SCREW, PICK-UP COIL(M5*12)
5	08316-26108	08316-26108	08316-26108	08316-26108	08316-26108	NUT,MAGNETO FLYWHEEL
6	08341-31039	08341-31039	08341-31039	08341-31039	08341-31039	KEY, MAGNETO

END





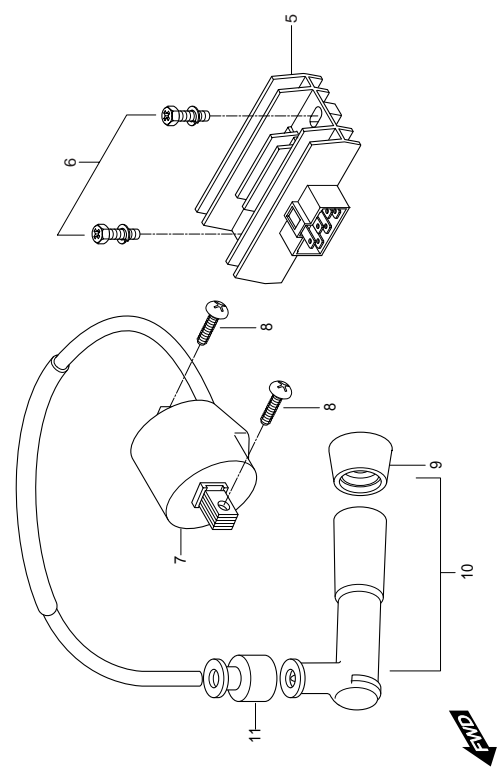
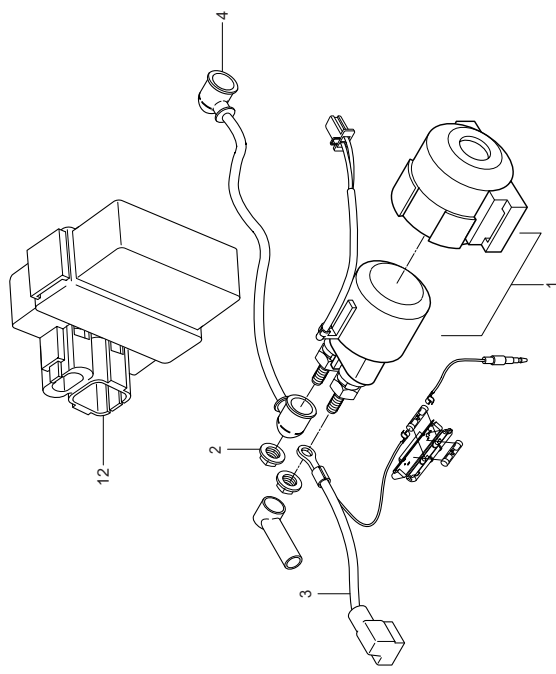
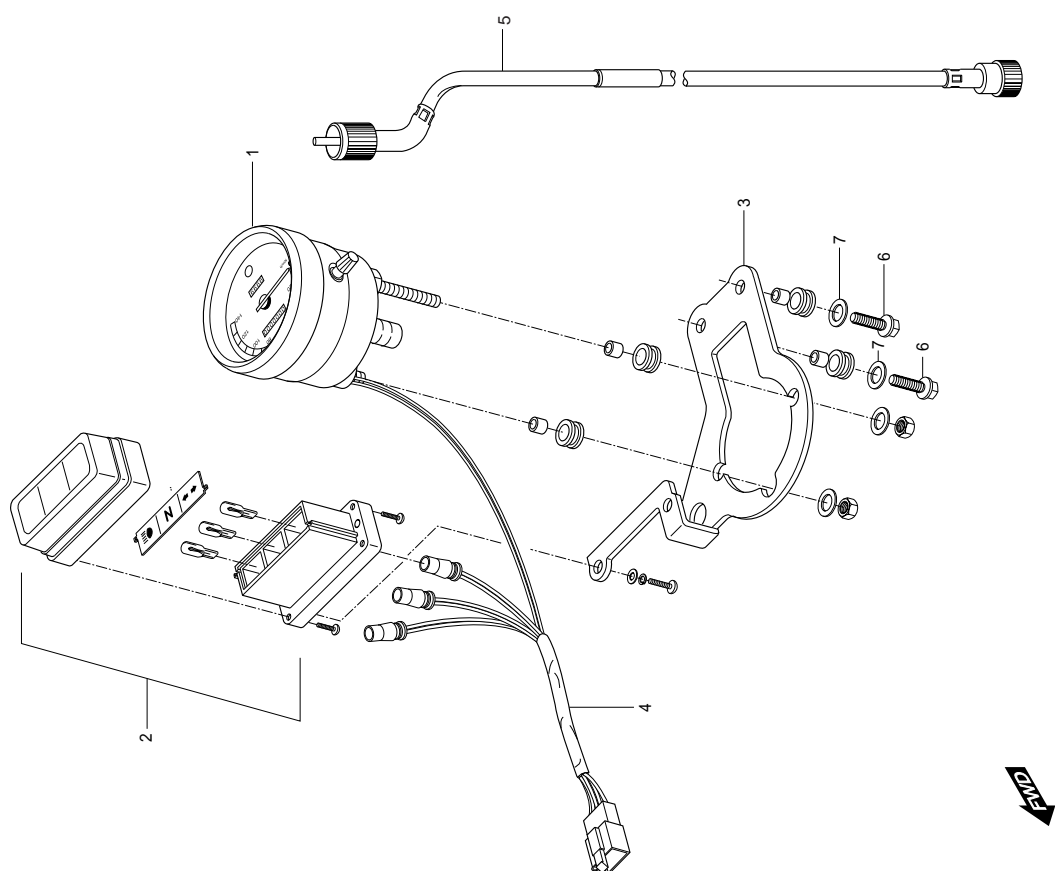




FIG 21. ELECTRICAL

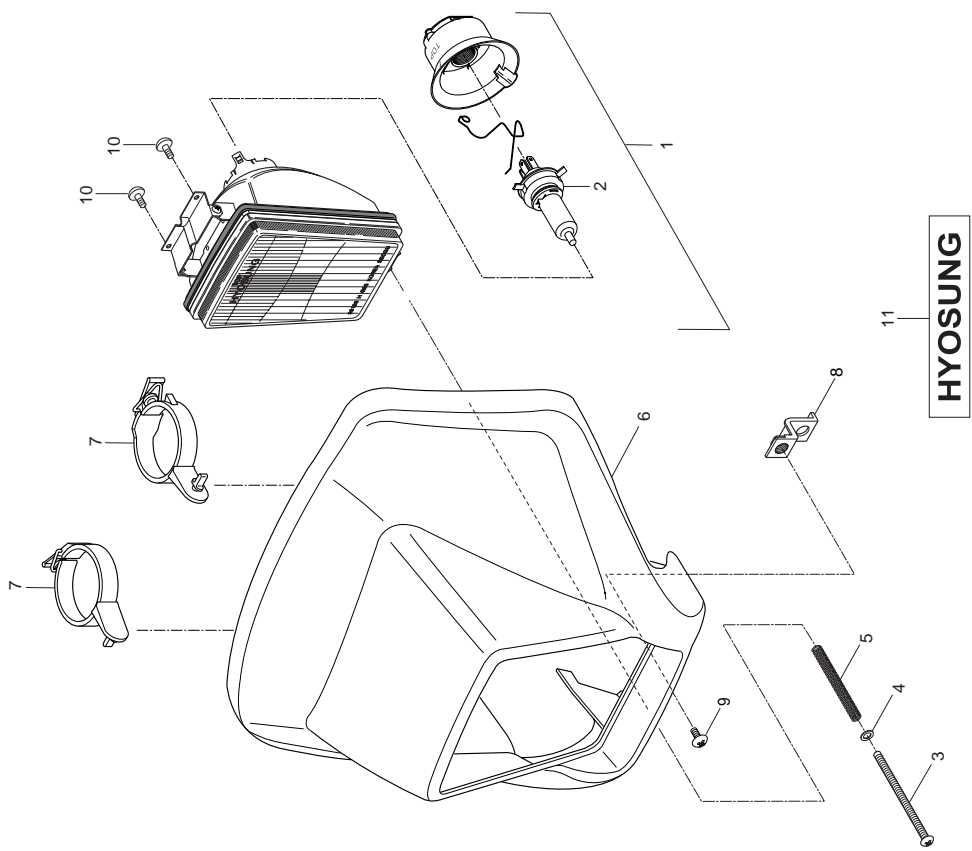
REF	PARTS NO.				PARTS NAME	Q'TY (PCS)	REMARKS
	NO. ST01	JEU01	JEU02	NG01	JG01	KEN01	
1	31800-35C00	31800-35C00	31800-35C00	31800-35C00	31800-35C00	31800-35C00	RELAY ASSY, STARTING MOTOR
2	08316-26066	08316-26066	08316-26066	08316-26066	08316-26066	08316-26066	NUT, STARTING MOTOR
3	36740HG5800	36740HG5800	36740HG5800	36740HG5800	36740HG5800	36740HG5800	FUSE CASE ASS'Y
4	33850HG5800	33850HG5800	33850HG5800	33850HG5800	33850HG5800	33850HG5800	LEAD WIRE,STARTING MOTOR
5	32800H01413	32800H01413	32800H01413	32800H01413	32800H01413	32800H01413	RECTIFIER ASS'Y, REGULATOR
6	09128-06035	09128-06035	09128-06035	09128-06035	09128-06035	09128-06035	SCREW, RECTIFIER
7	33410HG5800	33410HG5800	33410HG5800	33410HG5800	33410HG5800	33410HG5800	COIL ASSY,IGNITION
8	02112-46208	02112-46208	02112-46208	02112-46208	02112-46208	02112-46208	SCREW, IGNITION(M6*20)
9	33541-38210	33541-38210	33541-38210	33541-38210	33541-38210	33541-38210	SEAL,SPARK PLUG
10	33500HF4600	33500HF4600	33500HF4600	33500HF4600	33500HF4600	33500HF4600	CAP SPARK PLUG
11	33542-98000	33542-98000	33542-98000	33542-98000	33542-98000	33542-98000	SEAL,HIGHTENSION CORD
12	32900HG5800	32900HG5800	32900HG5800	32900HG5800	32900HG5800	32900HG5800	CDI UNIT
12-1		32900HG5850	32900HG5850	32900HG5850	32900HG5850	32900HG5850	CDI UNIT
13	38740HM5401						RELAY, HEAD LAMP
14	02112-06128						SCREW, HEAD LAMP RELAY



END

FIG 22. SPEEDOMETER ASS'Y

REF	PARTS NO.				PARTS NAME	Q'TY (PCS)	REMARKS
	NO. ST01	JEU01	JEU02	NG01	JG01	KEN01	
1	34100HG5800						
1-1		34100HG5860	34100HG5860	34100HG5860	34100HG5860	34100HG5860	SPEEDOMETER ASS'Y 1
2	39000HG5800	39000HG5800	39000HG5800	39000HG5800	39000HG5800	39000HG5800	SPEEDOMETER ASS'Y 1
3	34950HG5800	34950HG5800	34950HG5800	34950HG5800	34950HG5800	34950HG5800	INDICATOR LAMP, SPEEDOMETER 1
4	34171HG5800	34171HG5800	34171HG5800	34171HG5800	34171HG5800	34171HG5800	BRACKET, SPEEDOMETER 1
5	34910HG5803	34910HG5803	34910HG5803	34910HG5803	34910HG5803	34910HG5803	SOCKET ASSY, SPEEDOMETER 1
6	01107-06208	01107-06208	01107-06208	01107-06208	01107-06208	01107-06208	CABLE ASS'Y, SPEEDOMETER 1
7	09169H06012	09169H06012	09169H06012	09169H06012	09169H06012	09169H06012	BOLT, SPEEDOMETER BRACKET(M6*20) 2
							WASHER, SPEEDOMETER BRACKET 2





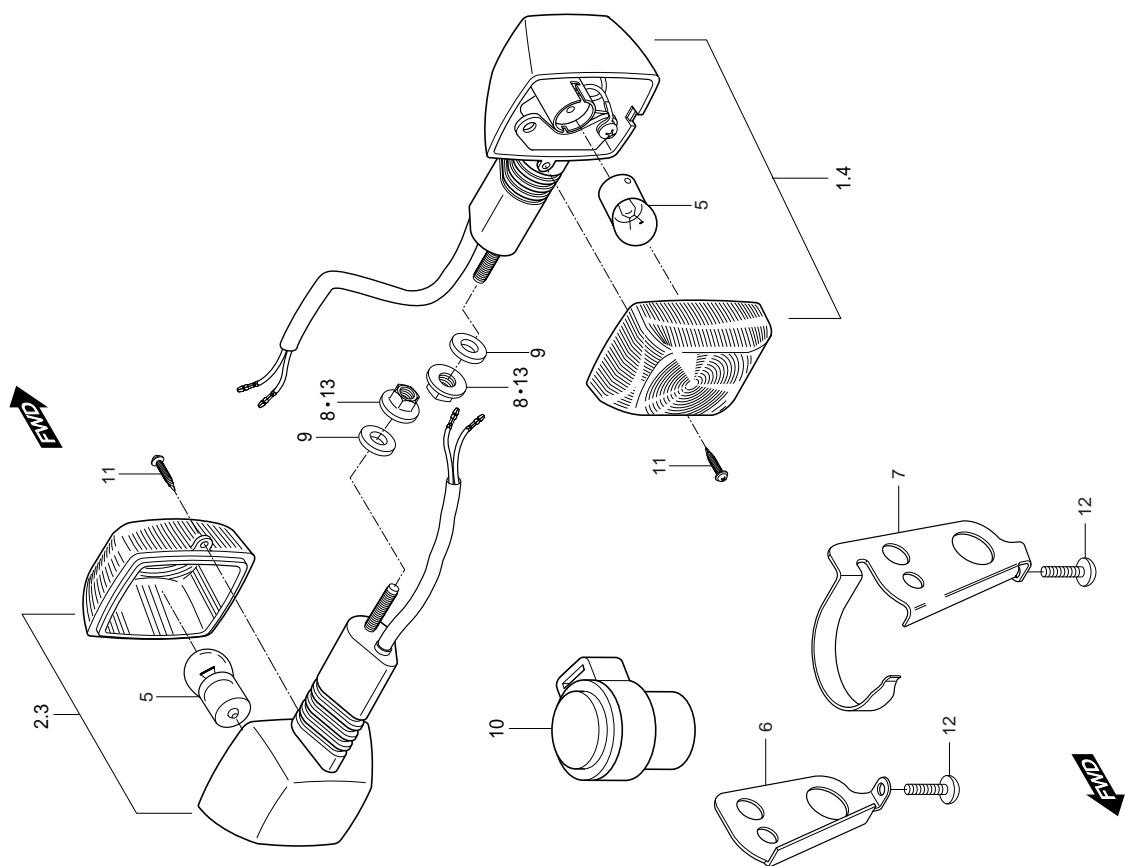


FIG 24. TURN SIGNAL LAMP

REF	PARTS NO.				PARTS NAME	Q'TY (PCS)	REMARKS
	NO. ST01	JEU01	JEU02	NG01	JG01	KEN01	
1	35601-35C00						LAMP FT TURN SIGNAL R
1-1		35601-35C50	35601-35C50	35601-35C50	35601-35C50		LAMP FT TURN SIGNAL R
2	35602-35C00						LAMP FT TURN SIGNAL L
2-1		35602-35C50	35602-35C50	35602-35C50	35602-35C50		LAMP FT TURN SIGNAL L
3	35603-35C00						LAMP, RR TURN SIGNAL R
3-1		35603-35C50	35603-35C50	35603-35C50	35603-35C50		LAMP, RR TURN SIGNAL R
3-2							LAMP, RR TURN SIGNAL R
4	35604-35C00						LAMP, RR TURN SIGNAL L
4-1		35604-35C50	35604-35C50	35604-35C50	35604-35C50		LAMP, RR TURN SIGNAL L
4-2							LAMP, RR TURN SIGNAL L
5	09471-12066	09471-12066	09471-12066	09471-12066	09471-12066		BULB, ASS'Y TURN SIGNAL LAMP(12V10W
6	35615HG5800	35615HG5800	35615HG5800	35615HG5800	35615HG5800		PLATE, FRONT TURN SIGNAL LAMP RH
7	35616HG5800	35616HG5800	35616HG5800	35616HG5800	35616HG5800		PLATE, FRONT TURN SIGNAL LAMP LH
8	08310-11068	08310-11068	08310-11068	08310-11068	08310-11068		NUT, REAR TURN SIGNAL(M6)
9	08322-21068	08322-21068	08322-21068	08322-21068	08322-21068		WASHER, REAR TURN SIGNAL
10	38610H09411	38610H09411	38610H09411	38610H09411	38610H09411		RELAY ASS'Y, TURN SIGNAL
11	35625-01A00	35625-01A00	35625-01A00	35625-01A00	35625-01A00		TAPPING SCREW
12	02142-05125	02142-05125	02142-05125	02142-05125	02142-05125		SCREW, FRONT TURN SIGNAL PLATE(M5'
13	08316-26066	08316-26066	08316-26066	08316-26066	08316-26066		NUT, FRONT TURN SIGNAL(M6)

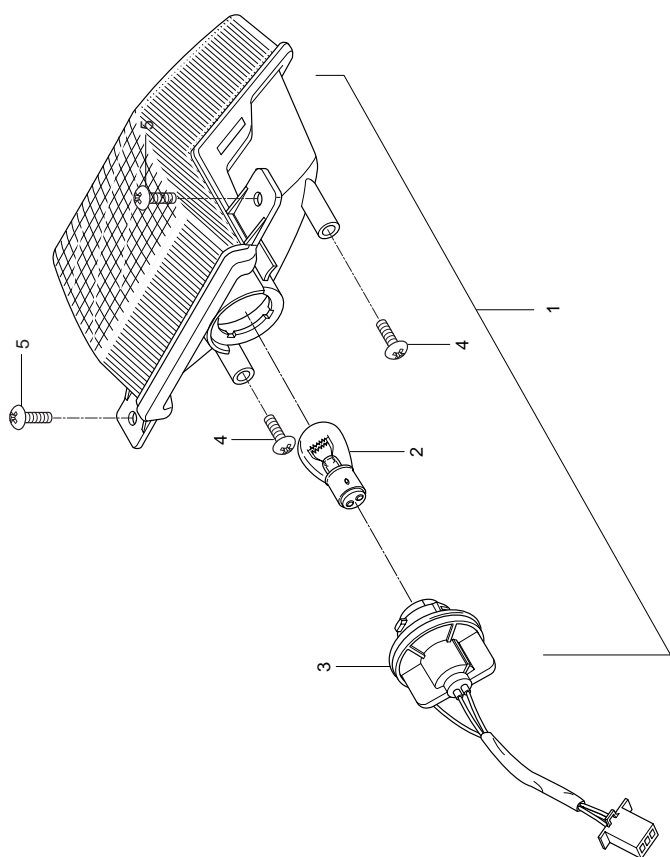
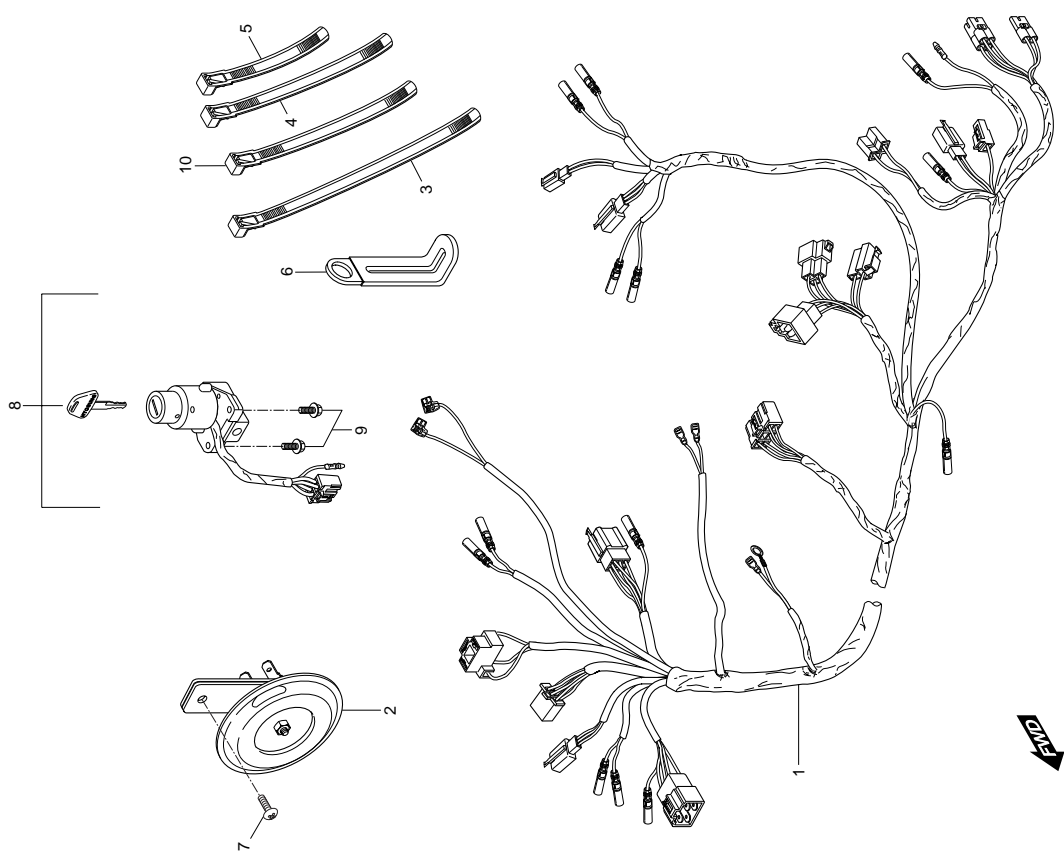




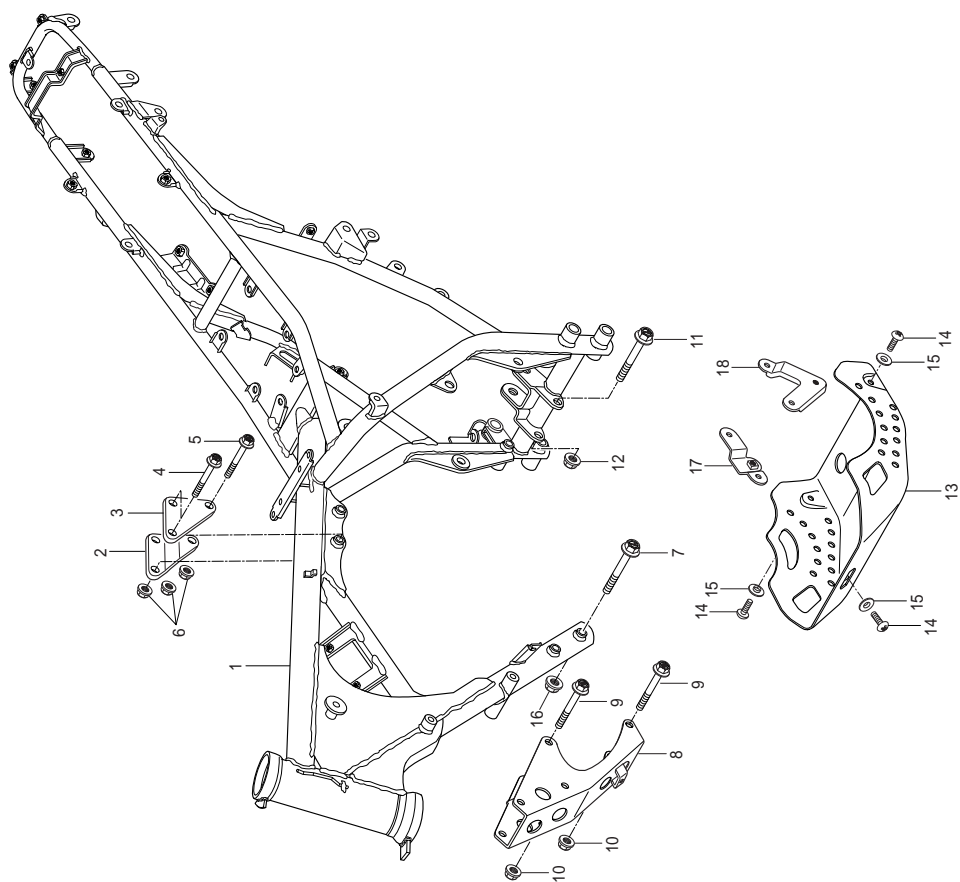
FIG 25. TAIL & STOP LAMP

REF	PARTS NO.				PARTS NAME	Q'TY (PCS)	REMARKS
	NO. ST01	JEU01	JEU02	NG01	JG01	KEN01	
1	35710HG5800						
1-1		35710HG5850	35710HG5850	35710HG5850	35710HG5850	35710HG5850	LAMP ASS'Y, RR COMB 1
2	09471-12047	09471-12047	09471-12047	09471-12047	09471-12047	09471-12047	LAMP ASS'Y, RR COMB 1
3	35760HG5800	35760HG5800	35760HG5800	35760HG5800	35760HG5800	35760HG5800	BULB, REAR COMBI(12V 21/5W) 1
4	03241-05256	03241-05256	03241-05256	03241-05256	03241-05256	03241-05256	SOCKET ASS'Y, TAIL & STOP 1
5	02142-06165	02142-06165	02142-06165	02142-06165	02142-06165	02142-06165	SCREW,REAR FENDER & REAR COMBI LC 2
							SCREW,REAR FENDER & REAR COMBI UF 2



**FWD**

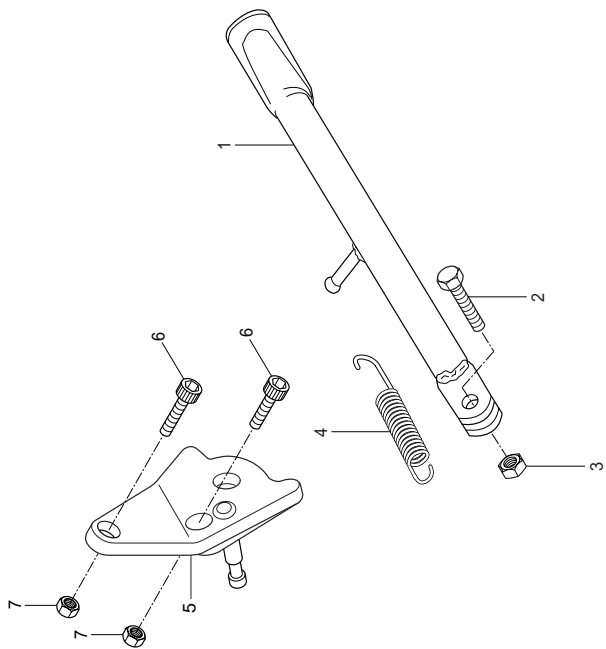




FWD

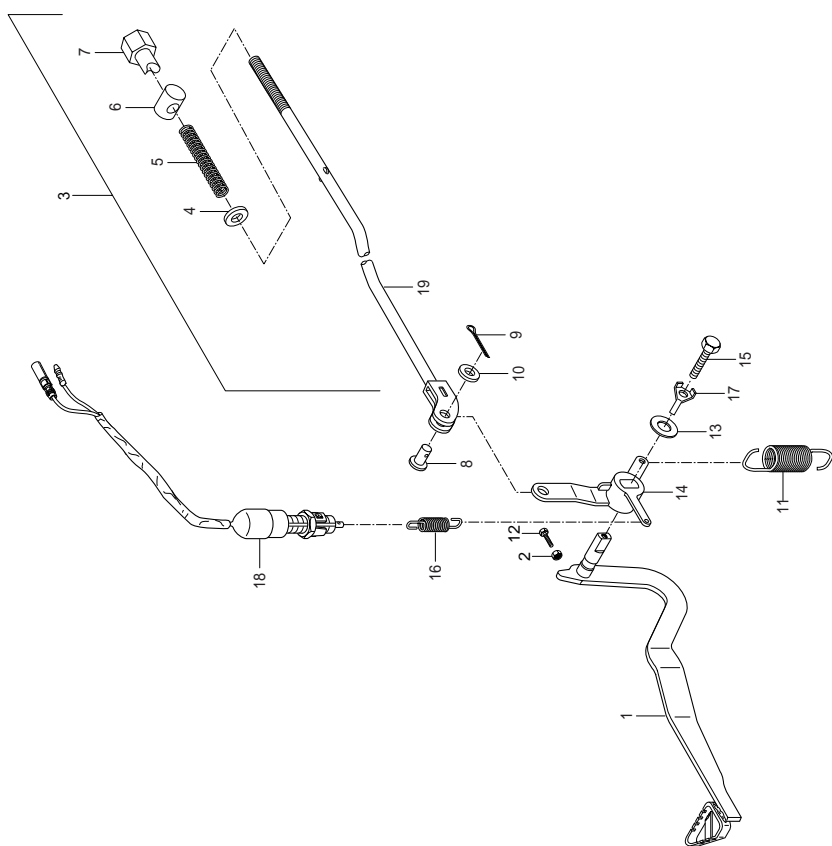
FIG 27. FRAME

REF	PARTS NO.				PARTS NAME	Q'TY (PCS)	REMARKS
	NO. ST01	JEU01	JEU02	NG01	JG01	KEN01	
1	41100HG580903P	41100HG585003P	41100HG585003P	41100HG585003P	41100HG585003P	1	FRAME COMP
2	41993HG5801	41993HG5801	41993HG5801	41993HG5801	41993HG5801	1	PLATE, ENGINE MTG UPPER RH
3	41994HG5801	41994HG5801	41994HG5801	41994HG5801	41994HG5801	1	PLATE, ENGINE MTG UPPER LH
4	01517-08608	01517-08608	01517-08608	01517-08608	01517-08608	2	BOLT, E/G MTG UPPER PLATE & FRAME(A
5	01517-08508	01517-08508	01517-08508	01517-08508	01517-08508	1	BOLT, E/G MTG UPPER PLATE & ENGINE(I
6	08319-31088	08319-31088	08319-31088	08319-31088	08319-31088	3	NUT, ENGINE MTG UPPER PLATE(M8)
7	01517-08658	01517-08658	01517-08658	01517-08658	01517-08658	2	BOLT, E/G MTG LOW BRACKETT & FRAM
8	41990HG580103P	41990HG580103P	41990HG580103P	41990HG580103P	41990HG580103P	1	BRACKET COMP, ENGINE MOUNTING LO
9	09103HI0149	09103HI0149	09103HI0149	09103HI0149	09103HI0149	2	BOLT, E/G MTG LOW BRACKETT & ENGIN
10	08319-31108	08319-31108	08319-31108	08319-31108	08319-31108	2	NUT, E/G MTG LOW BRACKETT & ENGINE
11	09103-08010	09103-08010	09103-08010	09103-08010	09103-08010	1	BOLT, ENGINE MTG REAR (L=88)
12	08319-31088	08319-31088	08319-31088	08319-31088	08319-31088	1	NUT, ENGINE MOUNTING REAR(M8)
13	42511HG5850	42511HG5850	42511HG5850	42511HG5850	42511HG5850	1	GUARD, ENGINE
14	02142-06125	02142-06125	02142-06125	02142-06125	02142-06125	3	SCREW, ENGINE GUARD(M6*12)
15	09169-06034	09169-06034	09169-06034	09169-06034	09169-06034	3	WASHER, ENGINE GUARD
16	08319-31088	08319-31088	08319-31088	08319-31088	08319-31088	2	NUT, E/G MTG LOW BRACKETT & FRAME
17	41140HG580303P	41140HG580303P	41140HG580303P	41140HG580303P	41140HG580303P	1	TUBE COMP, down
18	01517-08728	01517-08728	01517-08728	01517-08728	01517-08728	1	BOLT, e/g m.t.g. low bkt & Frame NO.2
19	01517-08168	01517-08168	01517-08168	01517-08168	01517-08168	2	BOLT, under guard pipe



END



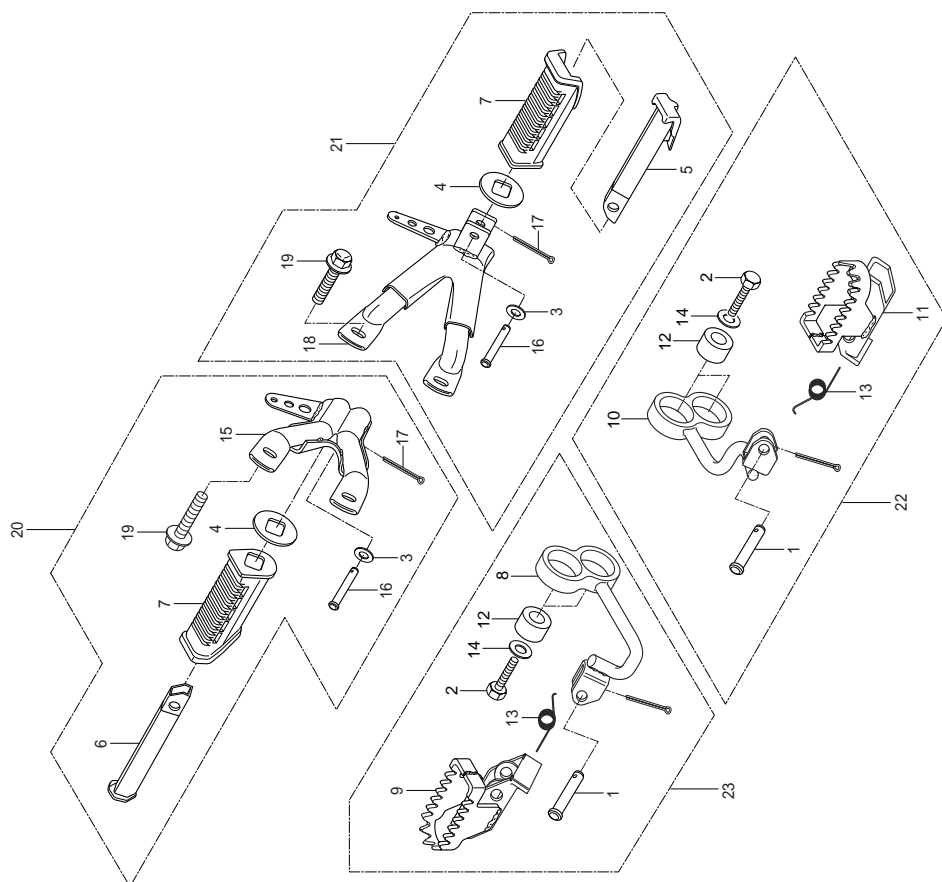


FWD



FIG 29. REAR BRAKE

REF NO. ST01	PARTS NO.				PARTS NAME		Q'TY (PCS)	REMARKS
	JEU01	JEU02	NG01	JG01	KEN01			
1	43100HG5802	43100HG5802	43100HG5802	43100HG5802	43100HG5802	PEDAL COMP, BRAKE	1	
2	08310-11068	08310-11068	08310-11068	08310-11068	08310-11068	NUT, BRAKE PEDAL ADJUSTER(M6)	1	
3	43300HG5801	43300HG5801	43300HG5801	43300HG5801	43300HG5801	ROD ASS'Y, REAR BRAKE	1	
4	08322-21068	08322-21068	08322-21068	08322-21068	08322-21068	WASHER, R/R BRAKE ROD R/R	1	
5	09440-09013	09440-09013	09440-09013	09440-09013	09440-09013	SPRING, R/R BRAKE ROD R/R	1	
6	09209-11006	09209-11006	09209-11006	09209-11006	09209-11006	PIN,R/R BRAKE ROD R/R	1	
7	09150-06009	09150-06009	09150-06009	09150-06009	09150-06009	NUT,R/R BRAKE ROD R/R(M6)	1	
8	09200-06013	09200-06013	09200-06013	09200-06013	09200-06013	PIN RR BRAKE ROD FRONT	1	
9	04111-20208	04111-20208	04111-20208	04111-20208	04111-20208	COTTER PIN, R/R BRAKE ROD	1	
10	08322-21068	08322-21068	08322-21068	08322-21068	08322-21068	WASHER, R/R BRAKE FT	1	
11	09443HI4025	09443HI4025	09443HI4025	09443HI4025	09443HI4025	SPRING, R/R BRAKE RETURN	1	
12	01104-06208	01104-06208	01104-06208	01104-06208	01104-06208	BOLT, BRAKE PEDAL(M6*20)	1	
13	09160-06012	09160-06012	09160-06012	09160-06012	09160-06012	WASHER, BRAKE PEDAL	1	
14	43123HG5802	43123HG5802	43123HG5802	43123HG5802	43123HG5802	ARM,BRAKE ROD	1	
15	01107-06168	01107-06168	01107-06168	01107-06168	01107-06168	BOLT, BRAKE PEDAL(M6*16)	1	
16	09443H06006	09443H06006	09443H06006	09443H06006	09443H06006	SPRING STOP LAMP SWITCH	1	
17	43129-35C00	43129-35C00	43129-35C00	43129-35C00	43129-35C00	WASHER LOCK	1	
18	37740-04502	37740-04502	37740-04502	37740-04502	37740-04502	SWITCH ASS'Y, STOP LAMP	1	
19	43310HG5801	43310HG5801	43310HG5801	43310HG5801	43310HG5801	ROD COMP,REAR BRAKE	1	NOT SALE



END

FIG 30. FOOTREST BAR

REF	PARTS NO.				PARTS NAME		Q'TY (PCS)	REMARKS
	NO. ST01	JEU01	JEU02	NG01	JG01	KEN01		
1	09200-10008	09200-10008	09200-10008	09200-10008	09200-10008	09200-10008	2	PIN, FRONT FOOTREST
2	09116HI0061	09116HI0061	09116HI0061	09116HI0061	09116HI0061	09116HI0061	4	BOLT, FRONT FOOTREST BRACKT
3	08322-21068	08322-21068	08322-21068	08322-21068	08322-21068	08322-21068	2	WASHER, PILLION FOOTREST PIN
4	43631-34A00	43631-34A00	43631-34A00	43631-34A00	43631-34A00	43631-34A00	2	WASHER, PILLION FOOTREST RUBBER
5	43710-12B01	43710-12B01	43710-12B01	43710-12B01	43710-12B01	43710-12B01	1	BAR COMP, PILLION FOOTREST L
6	43610-12B01	43610-12B01	43610-12B01	43610-12B01	43610-12B01	43610-12B01	1	BAR COMP, PILLION FOOTREST R
7	43551-29B21	43551-29B21	43551-29B21	43551-29B21	43551-29B21	43551-29B21	2	RUBBER,PILLION FOOTREST
8	43510HG5801	43510HG5801	43510HG5801	43510HG5801	43510HG5801	43510HG5801	1	BAR COMP, FRONT FOOTREST R
9	43550HG5800	43550HG5800	43550HG5800	43550HG5800	43550HG5800	43550HG5800	1	FOOTREST COMP,FRONT R
10	43520HG5801	43520HG5801	43520HG5801	43520HG5801	43520HG5801	43520HG5801	1	BAR COMP, FRONT FOOTREST L
11	43560HG5800	43560HG5800	43560HG5800	43560HG5800	43560HG5800	43560HG5800	1	FOOTREST COMP,FRONT L
12	09319-10033	09319-10033	09319-10033	09319-10033	09319-10033	09319-10033	4	BUSH, FRONT FOOTREST
13	09448HI16001	09448HI16001	09448HI16001	09448HI16001	09448HI16001	09448HI16001	2	SPRING,FRONT FOOTREST
14	08322-21108	08322-21108	08322-21108	08322-21108	08322-21108	08322-21108	4	WASHER,FRONT FOOTREST
15	43650HG580003P	43650HG580003P	43650HG580003P	43650HG580003P	43650HG580003P	43650HG580003P	1	BRACKET COMP, PILLION FOOTREST R
16	09200H06057	09200H06057	09200H06057	09200H06057	09200H06057	09200H06057	2	PIN, FILLION FOOTREST
17	04111-20208	04111-20208	04111-20208	04111-20208	04111-20208	04111-20208	2	COTTER PIN, PILLION FOOTREST
18	43750HG580003P	43750HG580003P	43750HG580003P	43750HG580003P	43750HG580003P	43750HG580003P	1	BRACKET COMP, PILLION FOOTREST L
19	01517-08168	01517-08168	01517-08168	01517-08168	01517-08168	01517-08168	4	BOLT, PILLION FOOTREST BRACKET(M8*
20	43650HG5800HPA	43650HG5800HPA	43650HG5800HPA	43650HG5800HPA	43650HG5800HPA	43650HG5800HPA	1	BRACKET PILLION R ASS'Y
21	43750HG5800HPA	43750HG5800HPA	43750HG5800HPA	43750HG5800HPA	43750HG5800HPA	43750HG5800HPA	1	BRACKET PILLION L ASS'Y
22	43520HG5801HPA	43520HG5801HPA	43520HG5801HPA	43520HG5801HPA	43520HG5801HPA	43520HG5801HPA	1	BAR FOOTREST L ASS'Y
23	43510HG5801HPA	43510HG5801HPA	43510HG5801HPA	43510HG5801HPA	43510HG5801HPA	43510HG5801HPA	1	BAR FOOTREST R ASS'Y

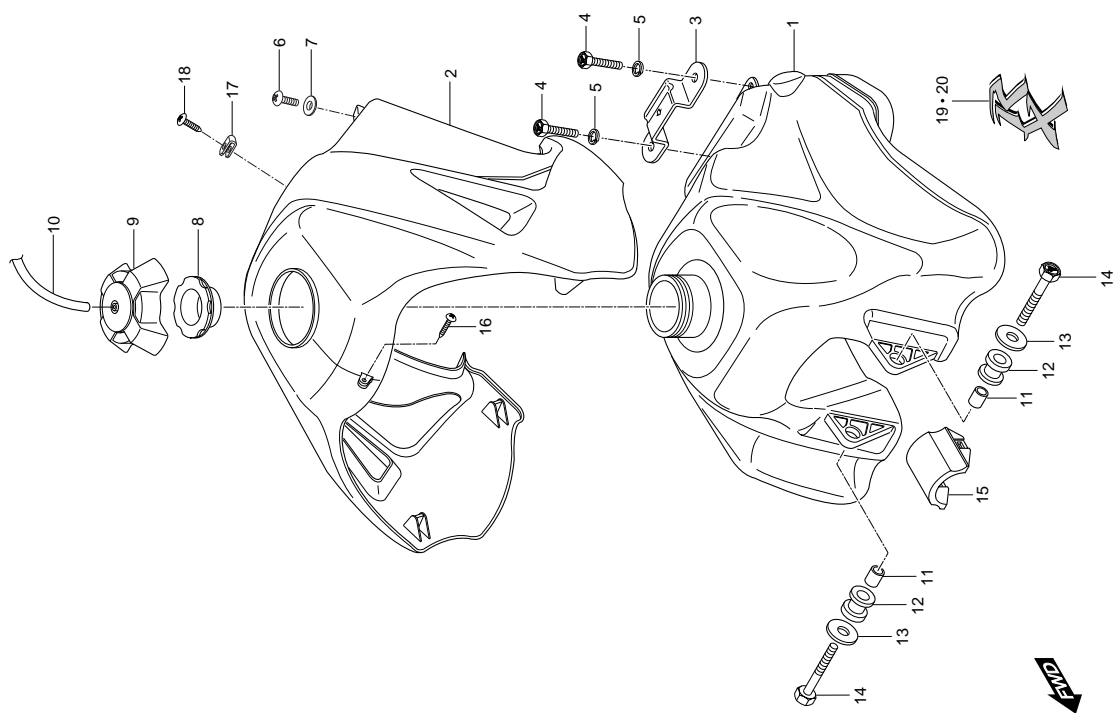


FIG 31. FUEL TANK

REF	PARTS NO.				PARTS NAME		Q'TY	REMARKS
	NO. ST01	JEU01	JEU02	NG01	JG01	KEN01		
							(PCS)	
1	44110HG5810	44110HG5810	44110HG5810	44110HG5810	44110HG5810	44110HG5810	1	TANK COMP, FUEL
2	44500HG5860	44500HG5880	44500HG5880	44500HG5850	44500HG5850	44500HG5880	1	COVER ASSY, FUEL(16B:0SY,3R1:0CR,6B1
3	45119HG5800	45119HG5800	45119HG5800	45119HG5800	45119HG5800	45119HG5800	1	PLATE, SEAT FRONT HOOK
4	01137-06208	01137-06208	01137-06208	01137-06208	01137-06208	01137-06208	2	BOLT, FUEL TANK R/R(6*20)
5	09180H06067	09180H06067	09180H06067	09180H06067	09180H06067	09180H06067	2	SPACER, FUEL TANK R/R
6	02142-06125	02142-06125	02142-06125	02142-06125	02142-06125	02142-06125	2	SCREW, FUEL TANK COVER(M6*12)
7	09169-06034	09169-06034	09169-06034	09169-06034	09169-06034	09169-06034	2	WASHER, FUEL TANK COVER
8	44248-05210	44248-05210	44248-05210	44248-05210	44248-05210	44248-05210	1	GASKET,FUEL TANK FILTER CAP
9	44210HG5801	44210HG5801	44210HG5801	44210HG5801	44210HG5801	44210HG5801	1	CAP ASSY, FUEL TANK FILTER
10	09343-05052	09343-05052	09343-05052	09343-05052	09343-05052	09343-05052	1	HOSE FUEL TANK BRTH(L=580)
11	09180H06069	09180H06069	09180H06069	09180H06069	09180H06069	09180H06069	2	SPACER, FUEL TANK FRONT
12	09320H10038	09320H10038	09320H10038	09320H10038	09320H10038	09320H10038	2	CUSHION, FUEL TANK FRONT
13	09160-06004	09160-06004	09160-06004	09160-06004	09160-06004	09160-06004	2	WASHER, FUEL TANK FRONT
14	01104-06258	01104-06258	01104-06258	01104-06258	01104-06258	01104-06258	2	BOLT, FUEL TANK FRONT(M6*25)
15	44541HG5800	44541HG5800	44541HG5800	44541HG5800	44541HG5800	44541HG5800	1	CUSHION, FUEL TANK UPPER
16	03241-15125	03241-15125	03241-15125	03241-15125	03241-15125	03241-15125	1	SCREW, FUEL TANK COVER FRONT(M5*1
17	09148-05004	09148-05004	09148-05004	09148-05004	09148-05004	09148-05004	1	NUT, FUEL TANK COVER R/R(M5)
18	03241-15125	03241-15125	03241-15125	03241-15125	03241-15125	03241-15125	1	SCREW, FUEL TANK COVER R/R(M5*12)
19-1	68114HG58000LY	68114HG58000LY	68114HG58000LY	68114HG58000LY	68114HG58000LY	68114HG58000LY	1	EMBLEM,FUEL TANK R 00R
19-2	68114HG58000LZ	68114HG58000LZ	68114HG58000LZ	68114HG58000LZ	68114HG58000LZ	68114HG58000LZ	1	EMBLEM,FUEL TANK R 0SY
19-3	68114HG58000NI	68114HG58000NI	68114HG58000NI	68114HG58000NI	68114HG58000NI	68114HG58000NI	1	EMBLEM,FUEL TANK R 0CR
19-4	68114HG58000NK	68114HG58000NK	68114HG58000NK	68114HG58000NK	68114HG58000NK	68114HG58000NK	1	EMBLEM,FUEL TANK R 0CB
19-5		68114HG58500LY	68114HG58500LY	68114HG58500LY	68114HG58500LY	68114HG58500LY	1	EMBLEM,FUEL TANK R 00R
19-6		68114HG58500LZ	68114HG58500LZ	68114HG58500LZ	68114HG58500LZ	68114HG58500LZ	1	EMBLEM,FUEL TANK R 0SY
19-7		68114HG58500NI	68114HG58500NI	68114HG58500NI	68114HG58500NI	68114HG58500NI	1	EMBLEM,FUEL TANK R 0CR
19-8		68114HG58500LK	68114HG58500LK	68114HG58500LK	68114HG58500LK	68114HG58500LK	1	EMBLEM,FUEL TANK R 0CB
20-1	68116HG58000LY	68116HG58000LY	68116HG58000LY	68116HG58000LY	68116HG58000LY	68116HG58000LY	1	EMBLEM,FUEL TANK L 00R
20-2	68116HG58000LZ	68116HG58000LZ	68116HG58000LZ	68116HG58000LZ	68116HG58000LZ	68116HG58000LZ	1	EMBLEM,FUEL TANK L 0SY
20-3	68116HG58000NI	68116HG58000NI	68116HG58000NI	68116HG58000NI	68116HG58000NI	68116HG58000NI	1	EMBLEM,FUEL TANK L 0CR
20-4	68116HG58000NK	68116HG58000NK	68116HG58000NK	68116HG58000NK	68116HG58000NK	68116HG58000NK	1	EMBLEM,FUEL TANK L 0CB
20-5		68116HG58500LY	68116HG58500LY	68116HG58500LY	68116HG58500LY	68116HG58500LY	1	EMBLEM,FUEL TANK L 00R
20-6		68116HG58500LZ	68116HG58500LZ	68116HG58500LZ	68116HG58500LZ	68116HG58500LZ	1	EMBLEM,FUEL TANK L 0SY
20-7		68116HG58500NI	68116HG58500NI	68116HG58500NI	68116HG58500NI	68116HG58500NI	1	EMBLEM,FUEL TANK L 0CR

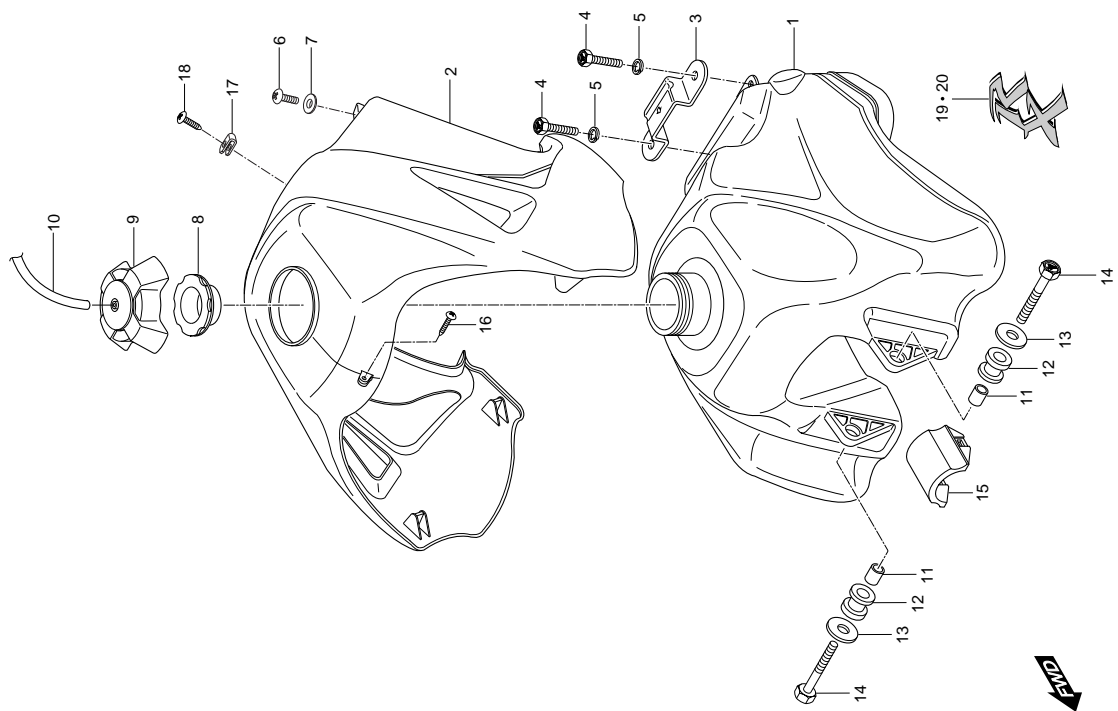
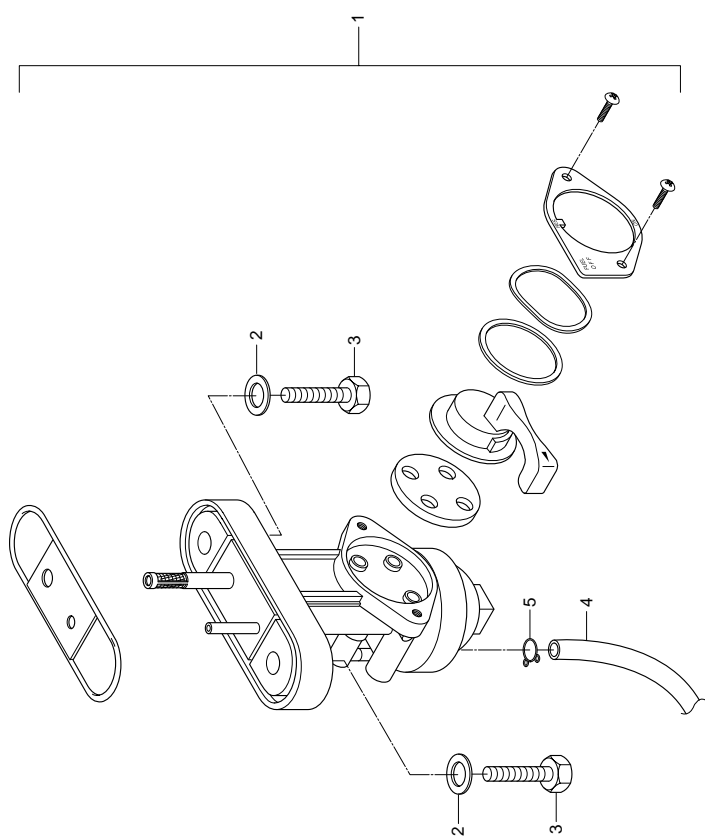


FIG 31. FUEL TANK

REF	PARTS NO.				PARTS NAME	Q'TY (PCS)	REMARKS
	NO. ST01	JEU01	JEU02	NG01	JG01	KEN01	
20-8		68116HG58500NK	68116HG58500NK	68116HG58500NK	68116HG58500NK	68116HG58500NK	EMBLEM,FUEL TANK L 0CB
21	68319H05330	68319H05330	68319H05330			68319H05330	PLATE, caution OR,CB,CR
21-1	68319H05340	68319H05340	68319H05340			68319H05340	PLATE, caution OSY
21-2				68319H93B30015	68319H93B30015		PLATE, caution OB,CR
21-3				68319H93B30120	68319H93B30120		PLATE, caution OR,SY



END





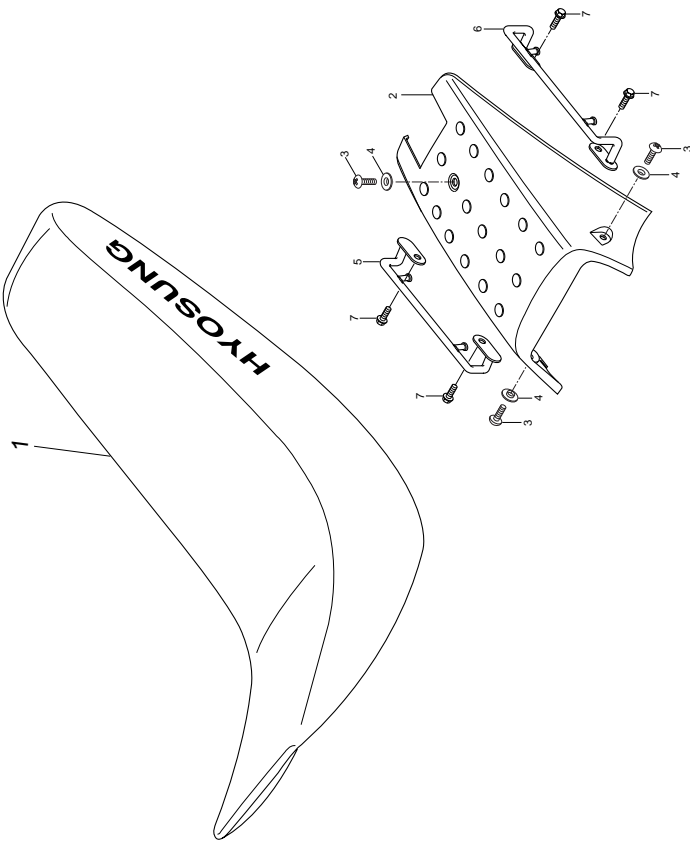


FIG 33. SEAT & SEAT TAIL COVER

REF	PARTS NO.				PARTS NAME		Q'TY (PCS)	REMARKS
	NO. ST01	JEU01	JEU02	NG01	JG01	KEN01		
1	45100HG5804	45100HG5804	45100HG5804	45100HG5804	45100HG5804	45100HG5804	1	SEAT SET
2	45511HG5851	45511HG5851	45511HG5851	45511HG5851	45511HG5851	45511HG5851	1	COVER, SEAT TAIL (COLOR)
3	02142-06125	02142-06125	02142-06125	02142-06125	02142-06125	02142-06125	3	SCREW, SEAT TAIL COVER(M6*12)
4	09169-06034	09169-06034	09169-06034	09169-06034	09169-06034	09169-06034	3	WASHER, SEAT TAIL COVER
5	46210HG580103P	46210HG580103P	46210HG580103P	46210HG580103P	46210HG580103P	46210HG580103P	1	CARRIER COMP, REAR R
6	46220HG580103P	46220HG580103P	46220HG580103P	46220HG580103P	46220HG580103P	46220HG580103P	1	CARRIER COMP, REAR L
7	01517-08168	01517-08168	01517-08168	01517-08168	01517-08168	01517-08168	4	BOLT, REAR CARRIER(M8*16)

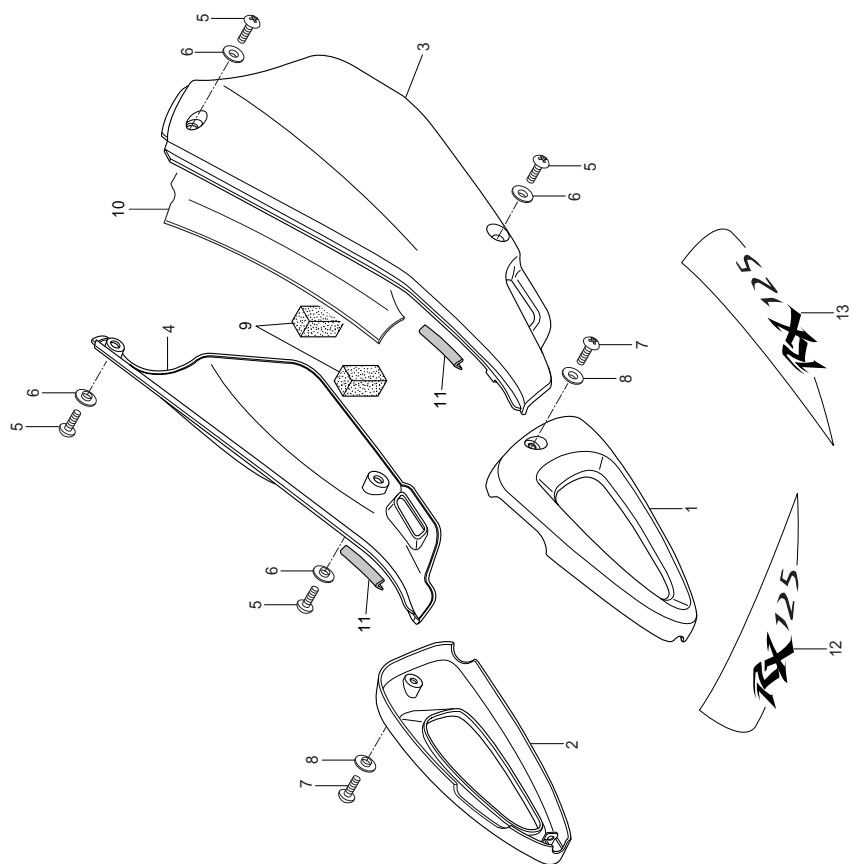


FIG 34. SIDE COVER

REF	PARTS NO.				PARTS NAME		Q'TY (PCS)	REMARKS
	NO. ST01	JEU01	JEU02	NG01	JG01	KEN01		
1	47321HG580103P	47321HG580103P	47321HG580103P	47321HG580103P	47321HG580103P	47321HG580103P	1	COVER, FRAME FRONT L
2	47311HG580103P	47311HG580103P	47311HG580103P	47311HG580103P	47311HG580103P	47311HG580103P	1	COVER, FRAME FRONT R
3	47211HG5850	47211HG5850	47211HG5850	47211HG5850	47211HG5850	47211HG5850	1	COVER,SIDE L(COLOR)
4	47111HG5850	47111HG5850	47111HG5850	47111HG5850	47111HG5850	47111HG5850	1	COVER,SIDE R(COLOR)
5	02142-06125	02142-06125	02142-06125	02142-06125	02142-06125	02142-06125	4	SCREW, SIDE COVER(M6*12)
6	09169-06034	09169-06034	09169-06034	09169-06034	09169-06034	09169-06034	4	WASHER, SIDE COVER
7	02142-06125	02142-06125	02142-06125	02142-06125	02142-06125	02142-06125	2	SCREW, FRAME COVER(M6*12)
8	09169-06034	09169-06034	09169-06034	09169-06034	09169-06034	09169-06034	2	WASHER, FRAME COVER
9	47161HE6101	47161HE6101	47161HE6101	47161HE6101	47161HE6101	47161HE6101	2	CUSHION, SIDE COVER RH
10	47239HG5800	47239HG5800	47239HG5800	47239HG5800	47239HG5800	47239HG5800	1	HEAT SHIELD, SIDE COVER LH
11	47161HG5801	47161HG5801	47161HG5801	47161HG5801	47161HG5801	47161HG5801	2	MOLDING, SIDE COVER
12	68134HG58000MA						1	TAPE,SIDE COVER R 00R,0CR
12-1	68134HG58000MB						1	TAPE,SIDE COVER R 0SY
12-2	68134HG58000MC						1	TAPE,SIDE COVER R 0CB
12-3		68134HG58500MA	68134HG58500MA	68134HG58500MA	68134HG58500MA	68134HG58500MA	1	TAPE,SIDE COVER R 00R,0CR
12-4		68134HG58500MB	68134HG58500MB	68134HG58500MB	68134HG58500MB	68134HG58500MB	1	TAPE,SIDE COVER R 0SY
12-5		68134HG58500MC	68134HG58500MC	68134HG58500MC	68134HG58500MC	68134HG58500MC	1	TAPE,SIDE COVER R 0CB
13	68136HG58000MA						1	TAPE,SIDE COVER L 00R,0CR
13-1	68136HG58000MB						1	TAPE,SIDE COVER L 0SY
13-2	68136HG58000MC						1	TAPE,SIDE COVER L 0CB
13-3		68136HG58500MA	68136HG58500MA	68136HG58500MA	68136HG58500MA	68136HG58500MA	1	TAPE,SIDE COVER L 00R,0CR
13-4		68136HG58500MB	68136HG58500MB	68136HG58500MB	68136HG58500MB	68136HG58500MB	1	TAPE,SIDE COVER L 0SY
13-5		68136HG58500MC	68136HG58500MC	68136HG58500MC	68136HG58500MC	68136HG58500MC	1	TAPE,SIDE COVER L 0CB

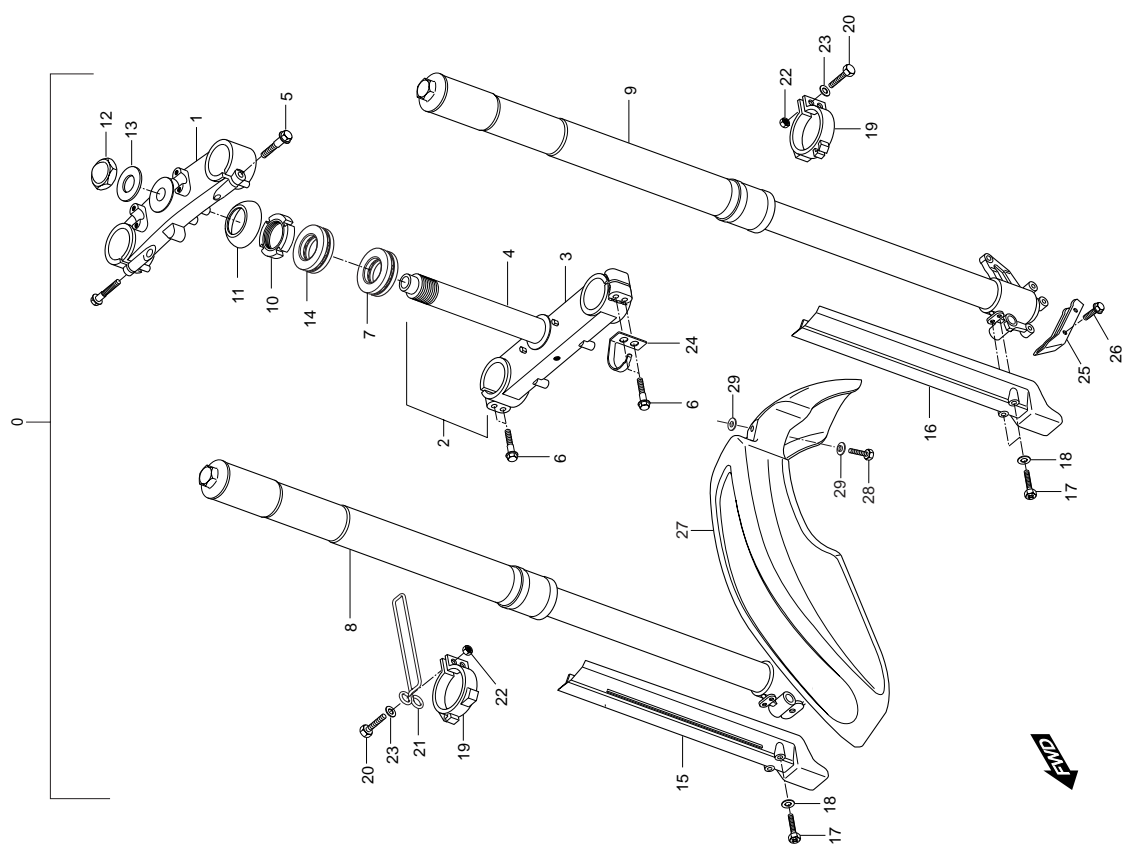
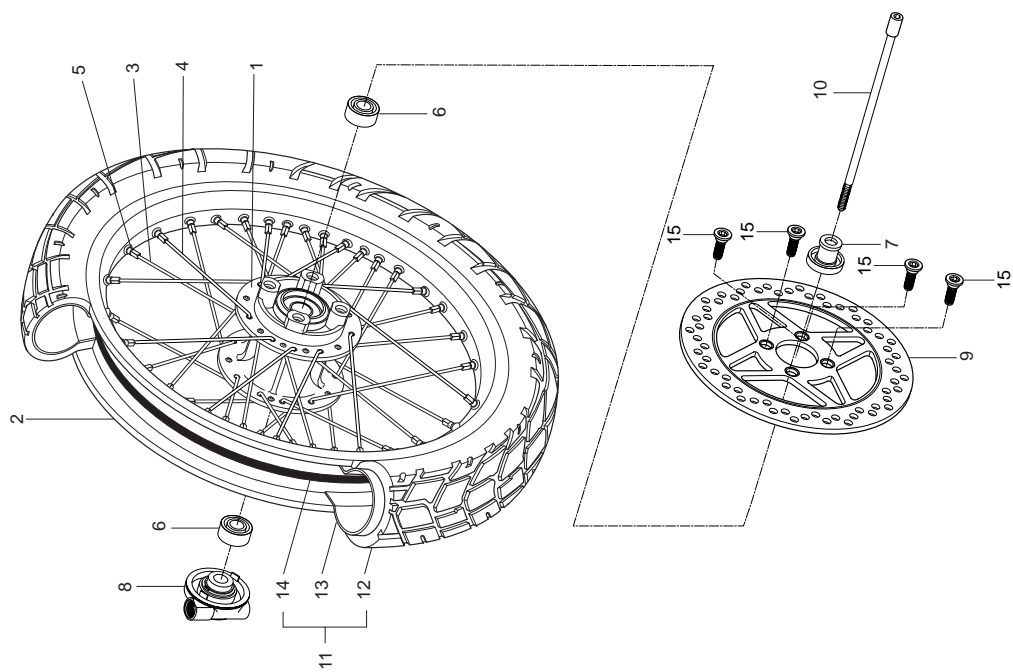


FIG 35. FRONT FORK & FENDER

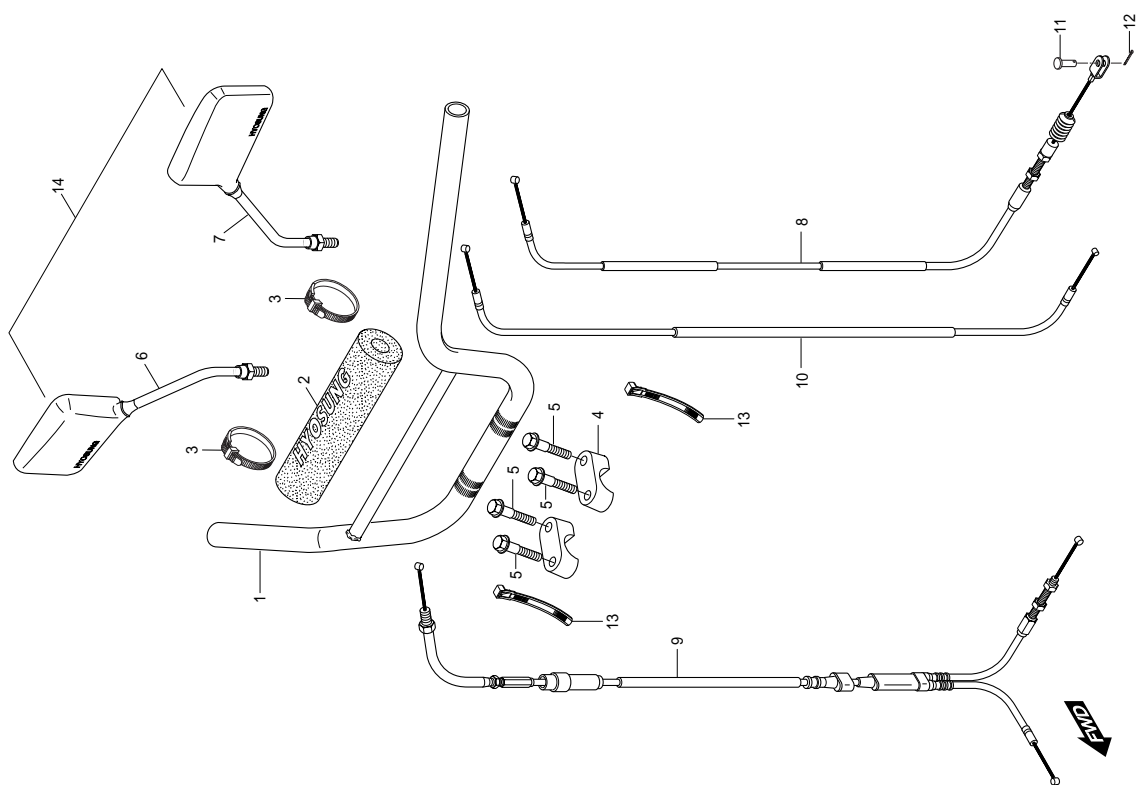
REF	PARTS NO.				PARTS NAME		Q'TY (PCS)	REMARKS
	NO. ST01	JEU01	JEU02	NG01	JG01	KEN01		
0	51100HG5800HPA	51100HG5800HPA	51100HG5800HPA	51100HG5800HPA	51100HG5800HPA	51100HG5800HPA	1	FORK ASSY,FRONT
1	51311HG581303P	51311HG581303P	51311HG581303P	51311HG581303P	51311HG581303P	51311HG581303P	1	BRACKET, FRONT FORK UPPER
2	51412HG5800HPA	51412HG5800HPA	51412HG5800HPA	51412HG5800HPA	51412HG5800HPA	51412HG5800HPA	1	BRACKET COMP, FRONT FORK UNDER
3	51411HG581003P	51411HG581003P	51411HG581003P	51411HG581003P	51411HG581003P	51411HG581003P	1	BRACKET, FRONT FORK UPPER
4	51412HG5811	51412HG5811	51412HG5811	51412HG5811	51412HG5811	51412HG5811	1	STEERING, STEM
5	01517-10458	01517-10458	01517-10458	01517-10458	01517-10458	01517-10458	2	BOLT, FRONT FORK UPPER BRACKET(M1
6	01517-08468	01517-08468	01517-08468	01517-08468	01517-08468	01517-08468	4	BOLT, FRONT FORK UPPER BRACKET(M8
7	09265H25001	09265H25001	09265H25001	09265H25001	09265H25001	09265H25001	1	BEARING, STEERING LOWER
8	51103HG5801	51103HG5801	51103HG5801	51103HG5801	51103HG5801	51103HG5801	1	DAMPER ASSY, FRONT FORK R
9	51104HG5800	51104HG5800	51104HG5800	51104HG5800	51104HG5800	51104HG5800	1	DAMPER ASSY, FRONT FORK L
10	51631-28000	51631-28000	51631-28000	51631-28000	51631-28000	51631-28000	1	NUT, STEERING STEM
11	51643HG5801	51643HG5801	51643HG5801	51643HG5801	51643HG5801	51643HG5801	1	DUST SEAL, STEERING UPPER
12	09159H22001	09159H22001	09159H22001	09159H22001	09159H22001	09159H22001	1	NUT, STEERING UPPER
13	09160H22031	09160H22031	09160H22031	09160H22031	09160H22031	09160H22031	1	WASHER, STEERING UPPER
14	09265H28001	09265H28001	09265H28001	09265H28001	09265H28001	09265H28001	1	BRARING, STEERING UPPER
15	51201HG5800	51201HG5800	51201HG5800	51201HG5800	51201HG5800	51201HG5800	1	PROTECTOR, FRONT FORK R
16	51202HG5800	51202HG5800	51202HG5800	51202HG5800	51202HG5800	51202HG5800	1	PROTECTOR, FRONT FORK L
17	02142-05125	02142-05125	02142-05125	02142-05125	02142-05125	02142-05125	4	SCREW, FRONT FORK PROTECTOR(M5*12
18	09169-05008	09169-05008	09169-05008	09169-05008	09169-05008	09169-05008	4	WASHER, FRONT FORK PROTECTOR
19	51210HG5801	51210HG5801	51210HG5801	51210HG5801	51210HG5801	51210HG5801	2	GUIDE, FRONT FORK PROTECTOR
20	02112-05258	02112-05258	02112-05258	02112-05258	02112-05258	02112-05258	4	SCREW, GUIDE PROTECTOR(M5*25)
21	34938HG5800	34938HG5800	34938HG5800	34938HG5800	34938HG5800	34938HG5800	1	GUIDE, SPEEDOMETER CABLE
22	08316-26055	08316-26055	08316-26055	08316-26055	08316-26055	08316-26055	4	NUT, GUIDE PROTECTOR(M5)
23	08322-21058	08322-21058	08322-21058	08322-21058	08322-21058	08322-21058	4	WASHER, GUIDE PROTECTOR SCREW
24	59266HG5800	59266HG5800	59266HG5800	59266HG5800	59266HG5800	59266HG5800	1	CLAMP, BRAKE HOSE NO.1
25	59268HG5801	59268HG5801	59268HG5801	59268HG5801	59268HG5801	59268HG5801	1	CLAMP, BRAKE HOSE NO.3
26	01517-06125	01517-06125	01517-06125	01517-06125	01517-06125	01517-06125	2	BOLT, HOSE CLAMP NO.3(M6*12)
27	53111HG5850	53111HG5850	53111HG5850	53111HG5850	53111HG5850	53111HG5850	1	FENDER, FRONT (16B:0SY,3R1:0CR,6B1:0C
28	01104-06208	01104-06208	01104-06208	01104-06208	01104-06208	01104-06208	4	BOLT, FRONT FENDER(M6*20)
29	09169-06053	09169-06053	09169-06053	09169-06053	09169-06053	09169-06053	8	WASHER, FRONT FENDER



END



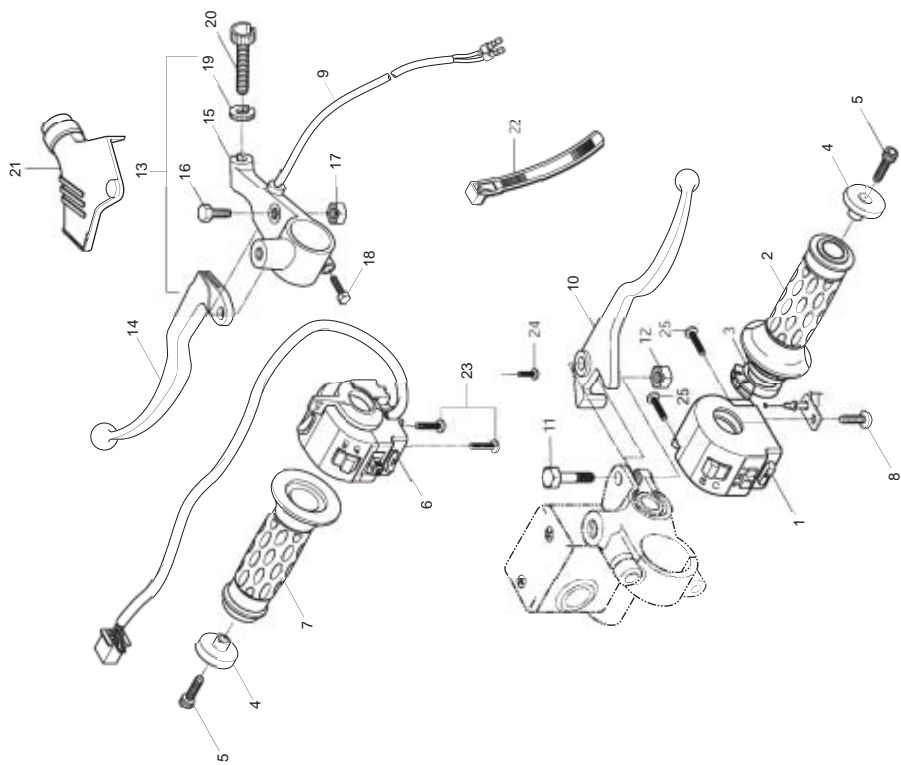




# FIG 37. HANDLE BAR

REF	PARTS NO.				PARTS NAME		Q'TY (PCS)	REMARKS
	NO. ST01	JEU01	JEU02	NG01	JG01	KEN01		
1	56110HG5856PAM	56110HG5856PAM	56110HG5856PAM	56110HG5856PAM	56110HG5856PAM	56110HG5856PAM	1	HANDLE BAR COMP
2	56172HG5800	56172HG5800	56172HG5800	56172HG5800	56172HG5800	56172HG5800	1	PAD CROSSBAR
3	09407-18401	09407-18401	09407-18401	09407-18401	09407-18401	09407-18401	2	BAND, CROSSBAR PAD
4	56211-272A0	56211-272A0	56211-272A0	56211-272A0	56211-272A0	56211-272A0	2	HOLDER, HANDLEBAR
5	01517-08355	01517-08355	01517-08355	01517-08355	01517-08355	01517-08355	4	BOLT,HANDLEBAR HOLDER(M8*35)
6	56500HM5450	56500HM5450	56500HM5450	56500HM5450	56500HM5450	56500HM5450	1	MIRROR ASSY,REAR VIEW R
7	56600HM5450	56600HM5450	56600HM5450	56600HM5450	56600HM5450	56600HM5450	1	MIRROR ASSY,REAR VIEW L
8	58200HG5802	58200HG5802	58200HG5802	58200HG5802	58200HG5802	58200HG5802	1	CABLE ASSY,CLUTCH
9	58300HG5805	58300HG5805	58300HG5805	58300HG5805	58300HG5805	58300HG5805	1	CABLE ASSY THROTTLE
10	58410HG5808	58410HG5808	58410HG5808	58410HG5808	58410HG5808	58410HG5808	1	CABLE ASSY STARTER
11	09200-06004	09200-06004	09200-06004	09200-06004	09200-06004	09200-06004	1	PIN CLUTCH CABLE
12	04111-20158	04111-20158	04111-20158	04111-20158	04111-20158	04111-20158	1	COTTER PIN, CLUTCH
13	09407-14403	09407-14403	09407-14403	09407-14403	09407-14403	09407-14403	2	CLAMP, HANDLE SWITCH HARNESS
14	56501HM5450	56501HM5450	56501HM5450	56501HM5450	56501HM5450	56501HM5450	1	MIRROR SET
15	56271HF4501PLA	56271HF4501PLA	56271HF4501PLA	56271HF4501PLA	56271HF4501PLA	56271HF4501PLA	2	BALANCER, handle bar
16	07110-08258	07110-08258	07110-08258	07110-08258	07110-08258	07110-08258	2	BOLT, handle bar balancer

FIG



END

FIG 38. HANDLE SWITCH

REF	PARTS NO.				PARTS NAME		Q'TY (PCS)	REMARKS
	NO. ST01	JEU01	JEU02	NG01	JG01	KEN01		
1	37200HM5401	37200HM5401	37200HM5401	37200HM5401	37200HM5401	37200HM5401	1	SWITCH ASS'Y, handle R
2	57110HG5803	57110HG5803	57110HG5803	57110HG5803	57110HG5803	57110HG5803	1	GRIP COMP, throttle
3	57113H93B00	57113H93B00	57113H93B00	57113H93B00	57113H93B00	57113H93B00	1	COVER, throttle grip
4	56271HF4501PLA	56271HF4501PLA	56271HF4501PLA	56271HF4501PLA	56271HF4501PLA	56271HF4501PLA	2	BALANCER
5	07110-08208	07110-08208	07110-08208	07110-08208	07110-08208	07110-08208	2	BOLT, handle balancer
6	37400H35C10	37400H35C10	37400H35C10	37400H35C10	37400H35C10	37400H35C10	1	SWITCH ASS'Y, handle L
7	57211HG5800	57211HG5800	57211HG5800	57211HG5800	57211HG5800	57211HG5800	1	GRIP COMP, L
8	02112-05105	02112-05105	02112-05105	02112-05105	02112-05105	02112-05105	1	SCREW, throttle cable
9	57460-17C00	57460-17C00	57460-17C00	57460-17C00	57460-17C00	57460-17C00	1	SWITCH ASS'Y, clutch lever
10	57421-13001	57421-13001	57421-13001	57421-13001	57421-13001	57421-13001	1	LEVER, brake
11	57431H05D00	57431H05D00	57431H05D00	57431H05D00	57431H05D00	57431H05D00	1	BOLT, brake lever pivot
12	08319-21065	08319-21065	08319-21065	08319-21065	08319-21065	08319-21065	1	NUT, brake lever pivot
13	57500HG5800	57500HG5800	57500HG5800	57500HG5800	57500HG5800	57500HG5800	1	LEVER ASS'Y, clutch
14	57620HG5800	57620HG5800	57620HG5800	57620HG5800	57620HG5800	57620HG5800	1	CLUTCH LEVER
15	57511HG5800	57511HG5800	57511HG5800	57511HG5800	57511HG5800	57511HG5800	1	HOLDER, clutch lever
16	57431H05D00	57431H05D00	57431H05D00	57431H05D00	57431H05D00	57431H05D00	1	BOLT , clutch lever pivot
17	08319-21065	08319-21065	08319-21065	08319-21065	08319-21065	08319-21065	1	NUT, brake lever pivot
18	57451HG5800	57451HG5800	57451HG5800	57451HG5800	57451HG5800	57451HG5800	1	BOLT, clutch lever holder
19	57442H93B00	57442H93B00	57442H93B00	57442H93B00	57442H93B00	57442H93B00	1	LOCK NUT
10	57441H93B00	57441H93B00	57441H93B00	57441H93B00	57441H93B00	57441H93B00	1	ADJUSTER, wire
21	57661HJ8200	57661HJ8200	57661HJ8200	57661HJ8200	57661HJ8200	57661HJ8200	1	COVER, clutch lever
22	09407-14403	09407-14403	09407-14403	09407-14403	09407-14403	09407-14403	2	CLAMP, handle switch harness
23	02112-05455	02112-05455	02112-05455	02112-05455	02112-05455	02112-05455	2	SCREW, h/switch LH
24	02112-05105	02112-05105	02112-05105	02112-05105	02112-05105	02112-05105	1	SCREW, choke cable
25	02112-05205	02112-05205	02112-05205	02112-05205	02112-05205	02112-05205	2	SCREW, H/switch RH

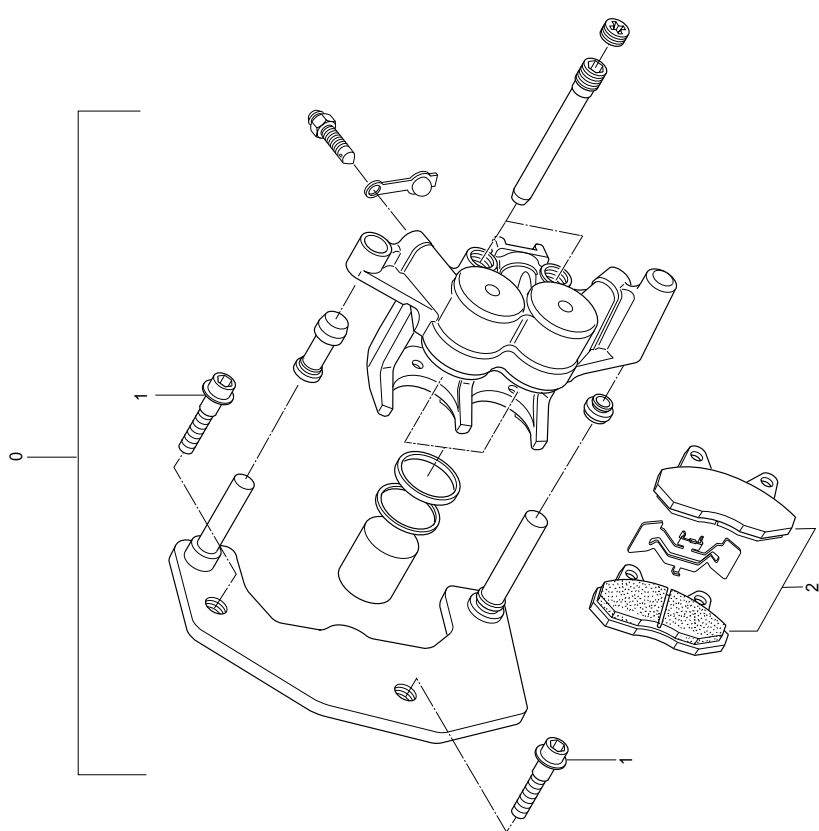


FIG 39. CALIPER

REF NO. ST01	PARTS NO.			PARTS NAME	Q'TY (PCS)	REMARKS
	JEU01	JEU02	NG01	JG01	KEN01	
0	59300HG5810	59300HG5810	59300HG5810	59300HG5810	59300HG5810	CALIPER ASS'Y, FRONT
1	07120-08308	07120-08308	07120-08308	07120-08308	07120-08308	BOLT,CALIPER
2	59300HG5800	59300HG5800	59300HG5800	59300HG5800	59300HG5800	PAD SET

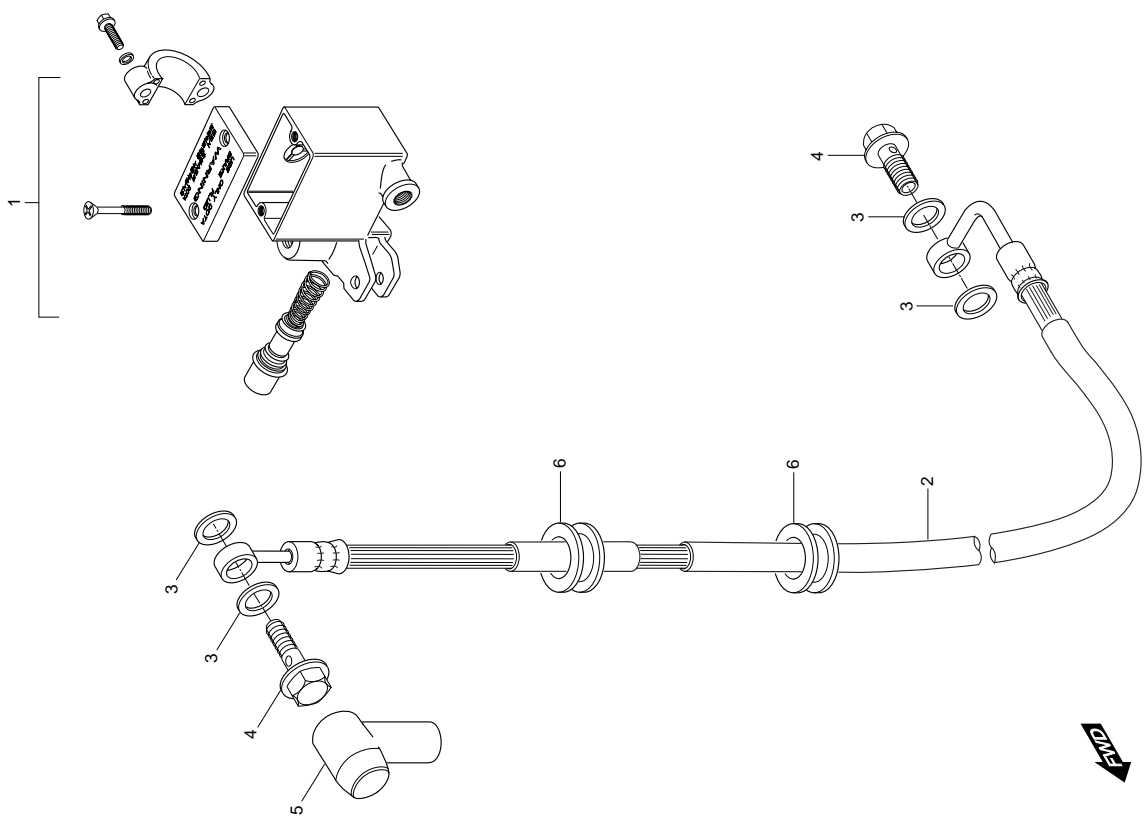
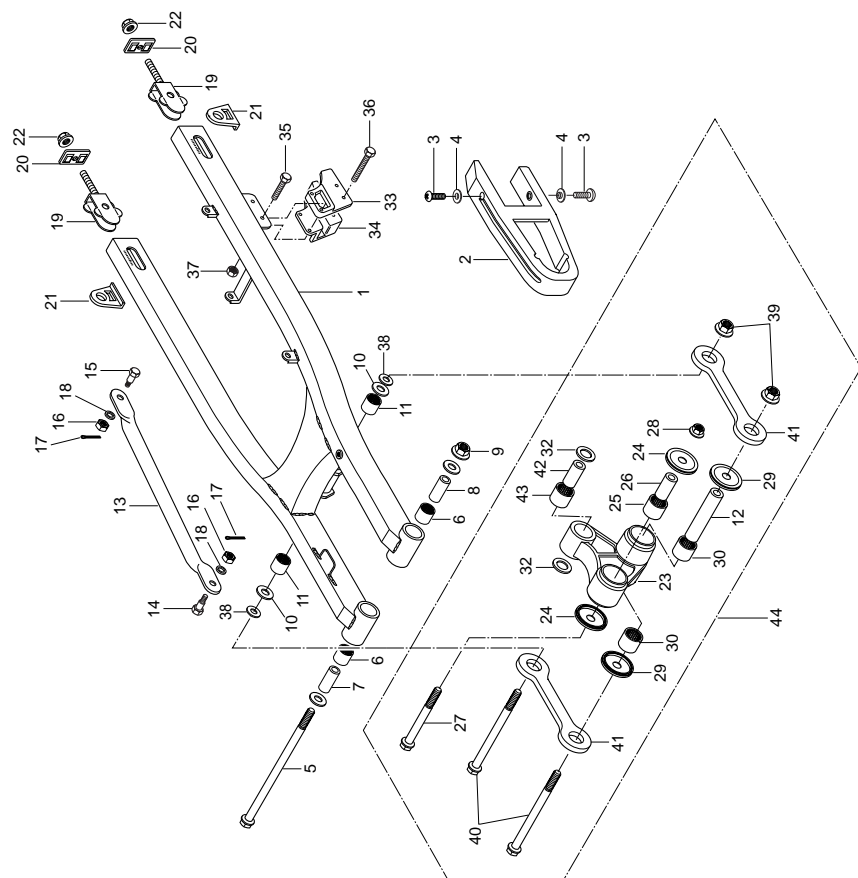




FIG 40. MASTER CYLINDER & BRAKE HOSE

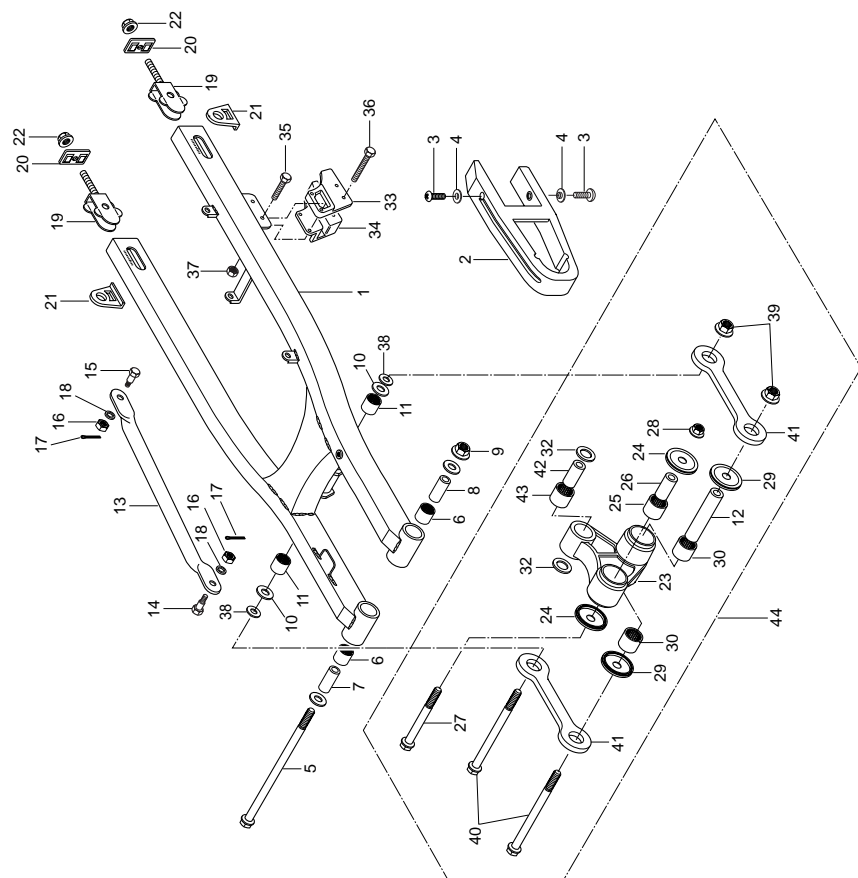
REF NO. ST01	JEU01	PARTS NO.			KCN01	PARTS NAME	Q'TY (PCS)	REMARKS
		JEU02	NG01	JG01				
1	59600-35C03	59600-35C03	59600-35C03	59600-35C03	59600-35C03	CYLINDER ASS'Y, FRONT MASTER	1	
2	59480HG5806	59480HG5806	59480HG5806	59480HG5806	59480HG5806	HOSE COMP, FRONT BRAKE	1	
3	09161-10005	09161-10005	09161-10005	09161-10005	09161-10005	WASHER, BRAKE FLUID	4	
4	09360-10039	09360-10039	09360-10039	09360-10039	09360-10039	BOLT, BRAKE HOSE	2	
5	59711H49002	59711H49002	59711H49002	59711H49002	59711H49002	BOOT, MASTER CYLINDER	1	
6	59265HG5800	59265HG5800	59265HG5800	59265HG5800	59265HG5800	GUIDE, BRAKE HOSE	2	



FWD

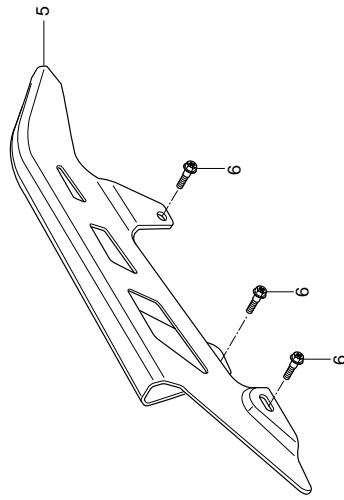
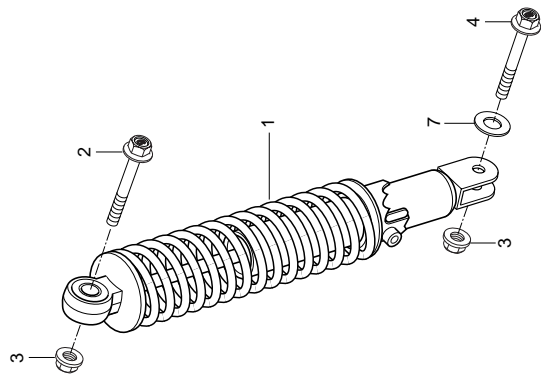
FIG 41. REAR SWINGARM

REF	PARTS NO.				PARTS NAME		Q'TY (PCS)	REMARKS
	NO. ST01	JEU01	JEU02	NG01	JG01	KEN01		
1	61100HG580503P	61100HG580503P	61100HG580503P	61100HG580503P	61100HG580503P	61100HG580503P	1	SWING ARM COMP, REAR
2	61273HG5802	61273HG5802	61273HG5802	61273HG5802	61273HG5802	61273HG5802	1	BUFFER,CHAIN TOUCH DEFENSE
3	02142-06165	02142-06165	02142-06165	02142-06165	02142-06165	02142-06165	2	BOLT, CHAIN TOUCH DEFENSE BUFFER(N
4	09169H06011	09169H06011	09169H06011	09169H06011	09169H06011	09169H06011	2	WASHER, CHAIN TOUCH DEFENSE BUFFE
5	61211HG5801	61211HG5801	61211HG5801	61211HG5801	61211HG5801	61211HG5801	1	SHAFT, REAR SWINGARM PIVOT
6	09263-20073	09263-20073	09263-20073	09263-20073	09263-20073	09263-20073	2	BEARING, REAR SWINGARM PIVOT
7	09180H14002	09180H14002	09180H14002	09180H14002	09180H14002	09180H14002	1	SPACER, REAR SWINGARM PIVOT R
8	09180H14003	09180H14003	09180H14003	09180H14003	09180H14003	09180H14003	1	SPACER, REAR SWINGARM PIVOT L
9	09159H14008	09159H14008	09159H14008	09159H14008	09159H14008	09159H14008	1	NUT, REAR SWINGARM PIVOT
10	09283-20031	09283-20031	09283-20031	09283-20031	09283-20031	09283-20031	2	SEAL, REAR CUSHION ROD
11	09263H20003	09263H20003	09263H20003	09263H20003	09263H20003	09263H20003	2	BRARING, REAR CUSHION ROD
12	09180H14001	09180H14001	09180H14001	09180H14001	09180H14001	09180H14001	1	SPACER, REAR CUSHION ROD
13	64310HG5800	64310HG5800	64310HG5800	64310HG5800	64310HG5800	64310HG5800	1	TORQUE LINK COMP,REAR
14	09111-08012	09111-08012	09111-08012	09111-08012	09111-08012	09111-08012	1	BOLT, REAR TORQUE LINK FRONT
15	09111-08013	09111-08013	09111-08013	09111-08013	09111-08013	09111-08013	1	BOLT, REAR TORQUE LINK REAR
16	09140-08008	09140-08008	09140-08008	09140-08008	09140-08008	09140-08008	2	NUT, REAR TORQUE LINK
17	04111-20208	04111-20208	04111-20208	04111-20208	04111-20208	04111-20208	2	COTTER PIN, REAR TORQUE LINK
18	08321-31088	08321-31088	08321-31088	08321-31088	08321-31088	08321-31088	2	WASHER, REAR TORQUE LINK
19	61410HG5800	61410HG5800	61410HG5800	61410HG5800	61410HG5800	61410HG5800	2	ADJUSTER COMP, CHAIN
20	61421HG5800	61421HG5800	61421HG5800	61421HG5800	61421HG5800	61421HG5800	2	PLATE, CHAIN ADJUSTER GUIDE
21	64712HG5800	64712HG5800	64712HG5800	64712HG5800	64712HG5800	64712HG5800	2	WASHER, CHAIN ADJUSTER
22	08316-26108	08316-26108	08316-26108	08316-26108	08316-26108	08316-26108	2	NUT, CHAIN ADJUSTER(M10)
23	62611HG5800	62611HG5800	62611HG5800	62611HG5800	62611HG5800	62611HG5800	1	LEVER, REAR CUSHION
24	09284H33003	09284H33003	09284H33003	09284H33003	09284H33003	09284H33003	2	DUST SEAL, REAR CUSHION LEVER FRON
25	09263-20073	09263-20073	09263-20073	09263-20073	09263-20073	09263-20073	1	BRARING, REAR CUSHION LEVER FRONT
26	09180H12001	09180H12001	09180H12001	09180H12001	09180H12001	09180H12001	2	SPACER, REAR CUSHION LEVER FRONT
27	09103H12046	09103H12046	09103H12046	09103H12046	09103H12046	09103H12046	1	BOLT,REAR CUSHION LEVER FRONT
28	08319-31128	08319-31128	08319-31128	08319-31128	08319-31128	08319-31128	1	NUT, REAR CUSHION LEVER FRONT(M12,
29	09284H32001	09284H32001	09284H32001	09284H32001	09284H32001	09284H32001	2	SEAL, REAR CUSHION LEVER CENTER
30	09263H20003	09263H20003	09263H20003	09263H20003	09263H20003	09263H20003	2	BEARING, REAR CUSHION LEVER CENTE
31	09284H17001	09284H17001	09284H17001	09284H17001	09284H17001	09284H17001	2	DUST SEAL, REAR CUSHION LEVER REAF
32	09284H32001	09284H32001	09284H32001	09284H32001	09284H32001	09284H32001	2	WASHER, REAR CUSHION ROD
33	61396HG5801	61396HG5801	61396HG5801	61396HG5801	61396HG5801	61396HG5801	1	GUIDE,DRIVEN CHAIN NO.1



FWD

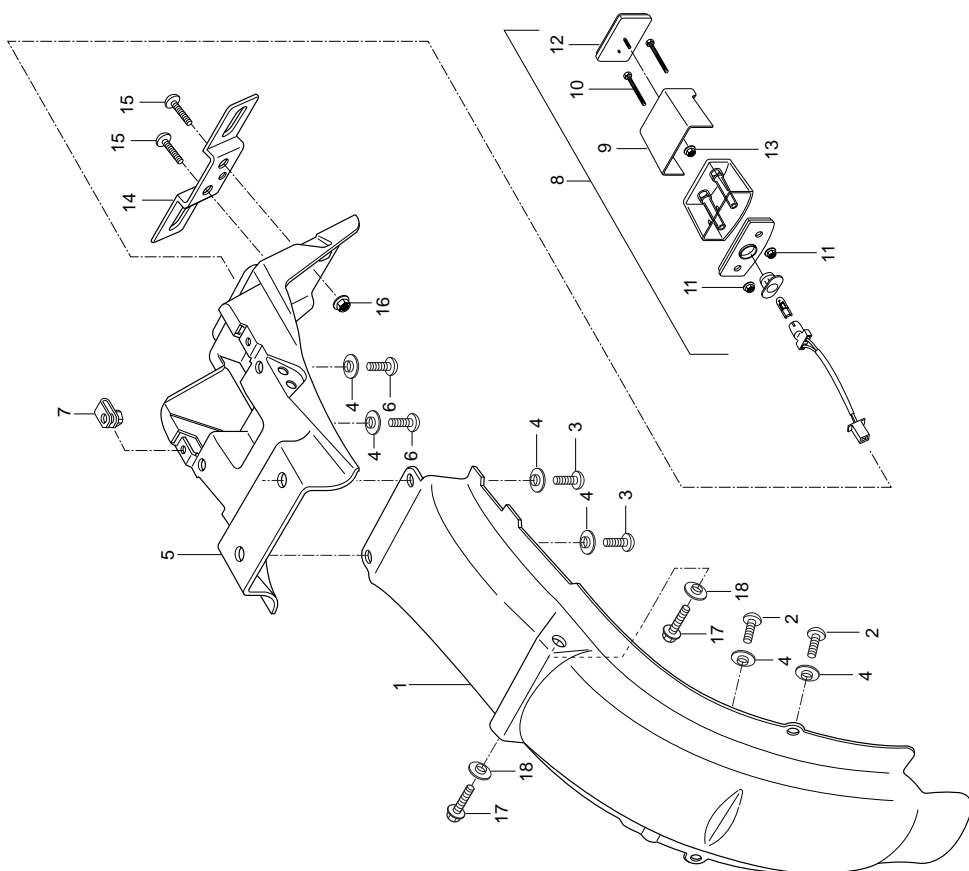




END

FIG 42. REAR SHOCKABSORBER

REF NO. ST01	PARTS NO.				PARTS NAME	Q'TY (PCS)	REMARKS
	JEU01	JEU02	NG01	JG01			
1	62100HG5804	62100HG5804	62100HG5804	62100HG5804	SHOCK ABSORBER ASS'Y, REAR	1	
2	09103HI0230	09103HI0230	09103HI0230	09103HI0230	BOLT,REAR SHOCK ABSORBER UPPER	1	
3	08319-31108	08319-31108	08319-31108	08319-31108	NUT, REAR SHOCK ABSORBER(M10)	1	
4	09103HI0101	09103HI0101	09103HI0101	09103HI0101	BOLT, REAR SHOCK ABSORBER LOWER	1	
5	61311HG5800	61311HG5800	61311HG5800	61311HG5800	CHAIN CASE	1	
6	09111H06066	09111H06066	09111H06066	09111H06066	BOLT, CHAIN CASE	3	
7	09160-10001	09160-10001	09160-10001	09160-10001	WASHER, REAR ABSORBER LOWER	1	

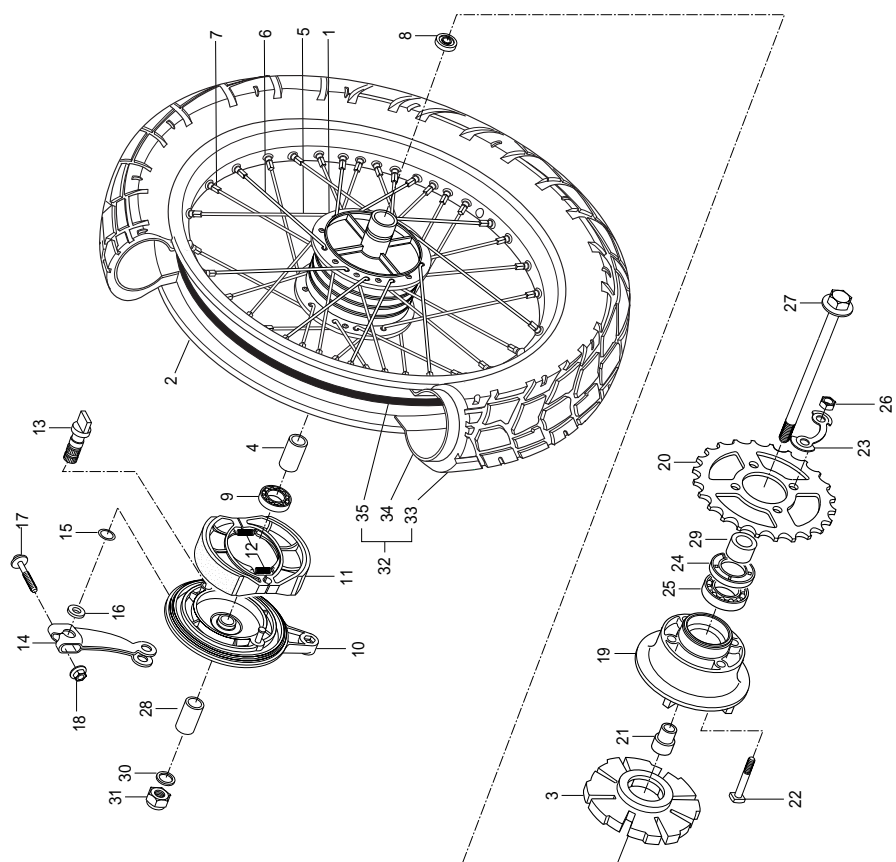


FWD



FIG 43. REAR FENDER

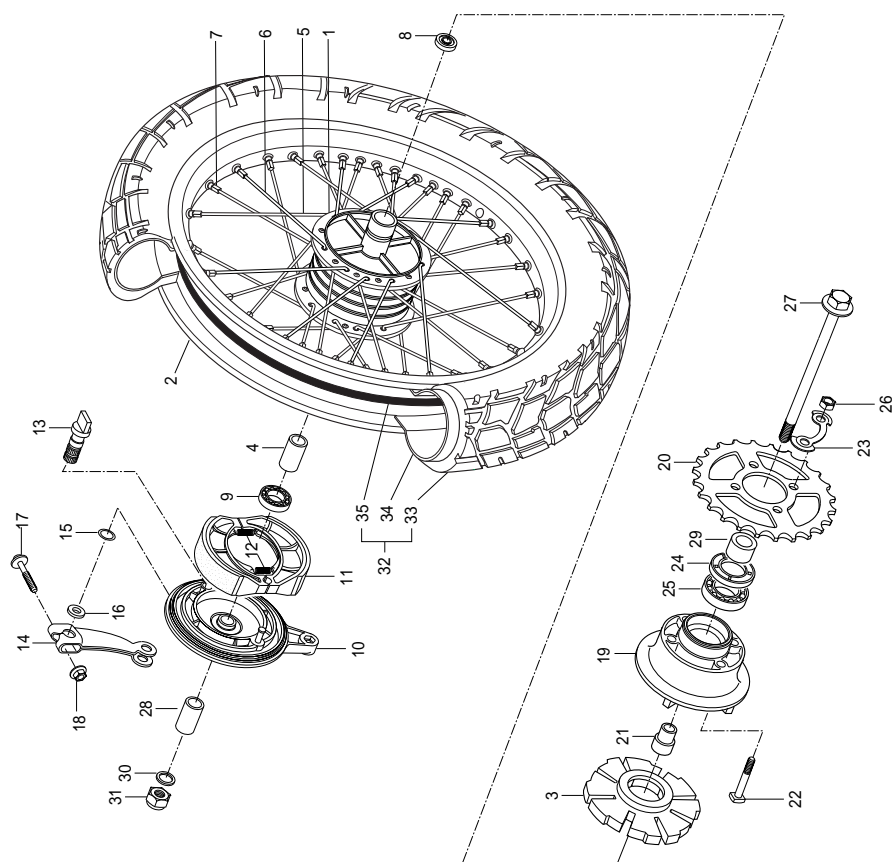
REF	PARTS NO.				PARTS NAME	Q'TY (PCS)	REMARKS
	NO. ST01	JEU01	JEU02	NG01	JG01	KEN01	
1	63112HGS803	63112HGS803	63112HGS803	63112HGS803	63112HGS803	REAR FENDER, FRONT	1
2	02142-06125	02142-06125	02142-06125	02142-06125	02142-06125	SCREW, REAR FENDER FRONT(M6*12)	2
3	02142-06165	02142-06165	02142-06165	02142-06165	02142-06165	SCREW, REAR FENDER FRONT(M6*16)	2
4	09169-06034	09169-06034	09169-06034	09169-06034	09169-06034	WASHER, REAR FENDER FRONT	6
5	63113HGS851	63113HGS851	63113HGS851	63113HGS851	63113HGS851	REAR FENDER, REAR	1
6	02142-06125	02142-06125	02142-06125	02142-06125	02142-06125	SCREW, REAR FENDER REAR(M6*12)	2
7	09148-06020	09148-06020	09148-06020	09148-06020	09148-06020	NUT, REAR FENDER & REAR COMBI UP(N	2
8	35910HGS800					LAMP ASS'Y, LICENSE	1
8-1	35910HGS850	35910HGS850	35910HGS850	35910HGS850	35910HGS850	LAMP ASS'Y, LICENSE	
9	35915HGS800	35915HGS800	35915HGS800	35915HGS800	35915HGS800	COVER, LICENSE LAMP	1
10	01107-05605	01107-05605	01107-05605	01107-05605	01107-05605	BOLT, LICENSE LAMP(M5*60)	2
11	08316-26055	08316-26055	08316-26055	08316-26055	08316-26055	NUT, LICENSE LAMP(M5)	2
12	35970-17303	35970-17303	35970-17303	35970-17303	35970-17303	REFLEX REFLECTOR ASS'Y, REAR	1
13	08316-26055	08316-26055	08316-26055	08316-26055	08316-26055	NUT, REAR REFLEX REFLECTOR(M5)	1
14	35927H44430	35927H44430	35927H44430	35927H44430	35927H44430	BRACKET,LICENSE PLATE	1
15	02142-06165	02142-06165	02142-06165	02142-06165	02142-06165	SCREW, LICENSE PLATE BRACKET(M6*16	2
16	08316-16068	08316-16068	08316-16068	08316-16068	08316-16068	NUT, LICENSE PLATE BRACKET(M6)	2
17	01517-08168	01517-08168	01517-08168	01517-08168	01517-08168	BOLT,SEAT REAR(M8*16)	2
18	09169-06034	09169-06034	09169-06034	09169-06034	09169-06034	WASHER, SEAT REAR BOLT	2



END

FIG 44. REAR WHEEL

REF	PARTS NO.				PARTS NAME		Q'TY (PCS)	REMARKS
	NO. ST01	JEU01	JEU02	NG01	JG01	KEN01		
0	65310HG5850HPA	65310HG5850HPA	65310HG5850HPA	65310HG5850HPA	65310HG5850HPA	REAR WHEEL COMP	1	
1	64110-07605	64110-07605	64110-07605	64110-07605	64110-07605	HUB,REAR	1	
2	65311HG5850	65311HG5850	65311HG5850	65311HG5850	65311HG5850	RIM, REAR WHEEL(1.60*18)	1	
3	64651-07001	64651-07001	64651-07001	64651-07001	64651-07001	DAMPER SHOCK, REAR HUB	1	
4	09180-15011	09180-15011	09180-15011	09180-15011	09180-15011	SPACER, REAR HUB BEARING	1	
5	65321H08B00	65321H08B00	65321H08B00	65321H08B00	65321H08B00	SPOKE REAR WHEEL INNER	18	
6	65322H08B00	65322H08B00	65322H08B00	65322H08B00	65322H08B00	SPOKE REAR WHEEL OUTER	18	
7	65325-03020	65325-03020	65325-03020	65325-03020	65325-03020	NIPPLE, WHEEL SPOKE	36	
8	08123-62027	08123-62027	08123-62027	08123-62027	08123-62027	BEARING, EAR HUB L	1	
9	08124-63027	08124-63027	08124-63027	08124-63027	08124-63027	BEARING, EAR HUB R	1	
10	64210HG5800BRA	64210HG5800BRA	64210HG5800BRA	64210HG5800BRA	64210HG5800BRA	PANEL COMP,REAR BRAKE ANCHOR	1	
11	64400S93B01	64400S93B01	64400S93B01	64400S93B01	64400S93B01	SHOE COMP, BRAKE	1	
12	09443H08025	09443H08025	09443H08025	09443H08025	09443H08025	SPRING,REAR BRAKE SHOE	2	
13	54441-29306	54441-29306	54441-29306	54441-29306	54441-29306	CAM REAR BK	1	
14	64451-38210	64451-38210	64451-38210	64451-38210	64451-38210	LEVER REAR BRAKE CAM	1	
15	09280-14003	09280-14003	09280-14003	09280-14003	09280-14003	O-RING,REAR BRAKE CAM	1	
16	09160H14001	09160H14001	09160H14001	09160H14001	09160H14001	WASHER,REAR BRAKE CAM DUST SEAL	1	
17	01517-06358	01517-06358	01517-06358	01517-06358	01517-06358	BOLT, REAR BRAKE CAM LEVER(M6*35)	1	
18	08316-16068	08316-16068	08316-16068	08316-16068	08316-16068	NUT, REAR BRAKE CAM LEVER(M6)	1	
19	64611H05300	64611H05300	64611H05300	64611H05300	64611H05300	DRUM REAR SPROCKET MOUNTING	1	
20	64511H93B00	64511H93B00	64511H93B00	64511H93B00	64511H93B00	SPROCKET REAR(48T)	1	
21	64733-39100	64733-39100	64733-39100	64733-39100	64733-39100	RETAINER, REAR SPROCKET DRUM	1	
22	09105H08001	09105H08001	09105H08001	09105H08001	09105H08001	BOLT, REAR SPROCKET	4	
23	09169-08012	09169-08012	09169-08012	09169-08012	09169-08012	WASHER, REAR SPROCKET	2	
24	09285-28001	09285-28001	09285-28001	09285-28001	09285-28001	OIL SEAL, REAR SPROCKET MTG DRUM	1	
25	08113-62047	08113-62047	08113-62047	08113-62047	08113-62047	BRARING, REAR SPROCKET MTG DRUM	1	
26	08310-11088	08310-11088	08310-11088	08310-11088	08310-11088	NUT, REAR SPROCKET(M8)	4	
27	64711HG5800	64711HG5800	64711HG5800	64711HG5800	64711HG5800	AXLE,REAR	1	
28	64741-08B10	64741-08B10	64741-08B10	64741-08B10	64741-08B10	SPACER REAR AXLE R	1	
29	64751H93B00	64751H93B00	64751H93B00	64751H93B00	64751H93B00	SPACER REAR AXLE L	1	
30	08322-11148	08322-11148	08322-11148	08322-11148	08322-11148	WASHER, REAR AXLE	1	
31	09159H14008	09159H14008	09159H14008	09159H14008	09159H14008	NUT REAR AXLE	1	
32	65101HG5800	65101HG5800	65101HG5800	65101HG5800	65101HG5800	TIRE SET,REAR (4.10*18 59P)	1	NOT SALE



END

FIG 44. REAR WHEEL

REF NO. ST01	PARTS NO.				PARTS NAME	Q'TY (PCS)	REMARKS
	JEU01	JEU02	NG01	JG01	KEN01		
33 65100HG5800	65100HG5800	65100HG5800	65100HG5800	65100HG5800	65100HG5800	1	TIRE COMP,REAR (4.10*18 59P)
33-1 65100HG5850						1	TIRE COMP,REAR (4.10*18 59P)
33-2 65100HG5860						1	TIRE COMP,REAR (4.10*18 59P)
34 65200-11601	65200-11601	65200-11601	65200-11601	65200-11601	65200-11601	1	TUBE ASSY, REAR WHEEL INNER
35 65261-14010	65261-14010	65261-14010	65261-14010	65261-14010	65261-14010	1	PROTECTOR, REAR WHEEL INNER