

C 13

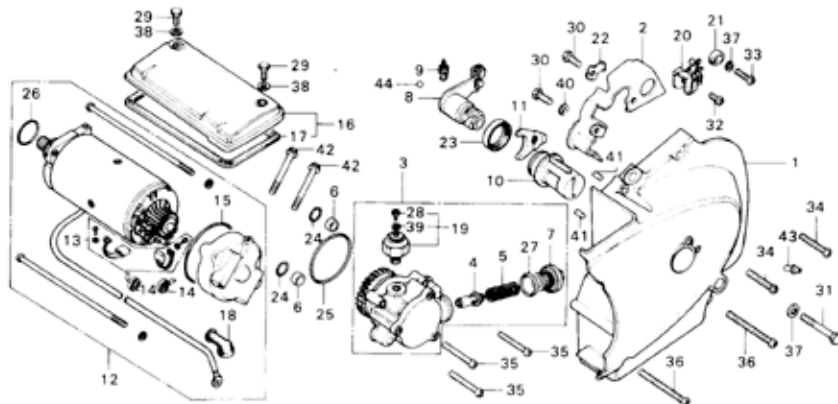
Block No.

E-10

Left Crankcase Cover

Starting Motor

Oil Pump



8323-84

| Service Item | F.R.T. | Ref. No. | Part No. | Description | Reqd. No. CB500K2 | Serial No. | Area Code |
|------------------------------------|--------|----------|---------------|--------------------------------|-------------------|------------|-----------|
| CARBON BRUSH KIT | 0.8 | 1 | 11341-323-000 | COVER COMP., LEFT CRANKCASE | 1 | | |
| STARTING MOTOR ASSY. | 0.6 | 2 | 11353-363-000 | PROTECTOR, CASE | 1 | | |
| RELIEF VALVE and its related parts | 0.4 | 3 | 15100-323-003 | PUMP ASSY., OIL (YAMADA) | 1 | | |
| • L. CRANKCASE COVER | | 4 | 15140-300-010 | VALVE, RELIEF | 1 | | |
| OIL PUMP ASSY. | 0.3 | 5 | 15145-300-000 | SPRING, RELIEF VALVE | 1 | | |
| • OIL PRESSURE SWITCH | | 6 | 15155-323-000 | COLLAR, O-RING | 2 | | |
| • CASE PROTECTOR | | 7 | 15331-323-003 | CAP, OIL PATH | 1 | | |
| NEUTRAL SWITCH ROTOR/STATOR | 0.2 | 8 | 22810-323-000 | THREAD COMP., CLUTCH LIFTER | 1 | | |
| CLUTCH LEVER/CLUTCH LIFTER ADJUST | | 9 | 22815-283-000 | SPRING, CLUTCH LEVER | 1 | | |
| SCREW and their related parts | | 10 | 22841-323-000 | ADJUSTER, CLUTCH | 1 | | |
| STARTING MOTOR COVER | 0.1 | 11 | 22844-323-000 | PEACE, ADJUSTER FIXING | 1 | | |
| | | 12 | 31200-323-013 | MOTOR ASSY., STARTING | 1 | | |
| | | 13 | 31201-292-158 | BRUSH SET, CARBON (MITSUBA) | 1 | | |
| | | 14 | 31204-292-158 | SPRING, CARBON BRUSH (MITSUBA) | 2 | | |
| | | 15 | 31206-286-158 | O-RING (MITSUBA) | 1 | | |
| | | 16 | 31280-323-000 | COVER COMP., STARTING MOTOR | 1 | | |
| | | 17 | 31282-323-300 | PACKING, STARTING MOTOR COVER | 1 | | |
| | | 18 | 32411-253-000 | COVER, STARTING MOTOR TERMINAL | 2 | | |
| | | 19 | 35500-333-014 | SWITCH ASSY., OIL PRESSURE | 1 | | |
| | | 20 | 35752-323-000 | STATOR, NEUTRAL SWITCH | 1 | | |
| | | 21 | 35753-323-000 | ROTOR, NEUTRAL SWITCH | 1 | | |
| | | 22 | 90532-323-000 | WASHER, TONGUE, 6MM | 1 | | |
| | | 23 | 91205-200-000 | OIL SEAL, 22x26x29x8 | 1 | | |
| | | 24 | 91301-268-020 | O-RING, 14MM | 2 | | |
| | | 25 | 91302-250-010 | O-RING, 47MM | 1 | | |

1976.05.20

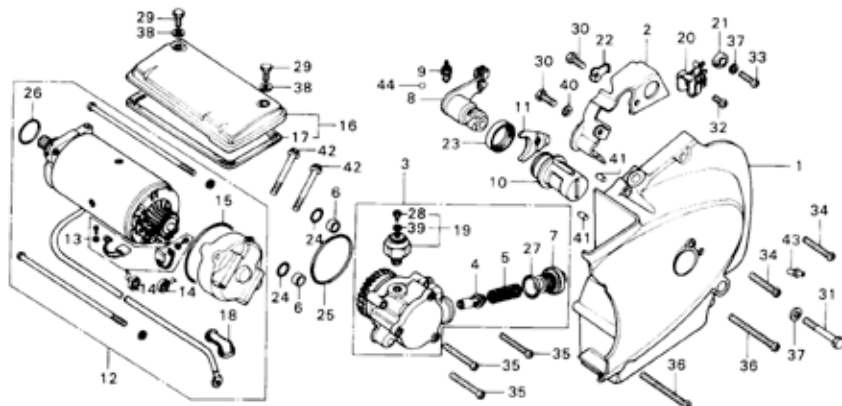
013

C 14

Block No.

E-10

**Left Crankcase Cover
Starting Motor •
Oil Pump**



8323-04

| Service Item | F.R.T. | Ref. No. | Part No. | Description | Reqd. No. CB500K2 | Serial No. | Area Code |
|--------------|--------|----------|----------------|----------------------|----------------------|------------|-----------|
| | | 26 | 91309-300-000 | O-RING: 24.4x3.1 | 1 | | |
| | | 27 | 91315-044-000 | O-RING: 19.4x2.8 | 1 | | |
| | | 28 | 92000-04006-0A | BOLT: HEX.: 4X6 | 1 | | |
| | | 29 | 92000-06012-02 | BOLT: HEX.: 6X12 | 2 | | |
| | | 30 | 92000-06016 | BOLT: HEX.: 6X16 | 2 | | |
| | | 31 | 92000-06045 | BOLT: HEX.: 6X45 | 1 | | |
| | | 32 | 93500-06012 | SCREW: PAN: 6X12 | 1 | | |
| | | 33 | 93500-06020 | SCREW: PAN: 6X20 | 1 | | |
| | | 34 | 93500-06032 | SCREW: PAN: 6X32 | 2 | | |
| | | 35 | 93500-06035 | SCREW: PAN: 6X35 | 3 | | |
| | | 36 | 93500-06055 | SCREW: PAN: 6X55 | 2 | | |
| | | 37 | 94101-06000 | WASHER: PLAIN: 6MM | 2 | | |
| | | 38 | 94101-06200 | WASHER: PLAIN: 6MM | 2 | | |
| | | 39 | 94111-04000 | WASHER: SPRING: 4MM | 1 | | |
| | | 40 | 94111-06000 | WASHER: SPRING: 6MM | 1 | | |
| | | 41 | 94302-06100 | PIN: KNOCK: 6X108 | 2 | | |
| | | 42 | 95700-06055 | BOLT: FLANGE: 6X55 | 2 | | |
| | | 43 | 96201-30001 | NIPPLE: GREASE: A.45 | 1 | | |
| | | 44 | 96211-10000 | BALL: STEEL: #10 | 1 | | |

1976.05.20

C14

Courtesy of

www.hondafour.com



Honda4Fun

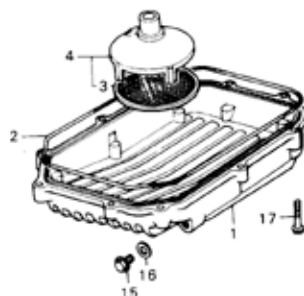
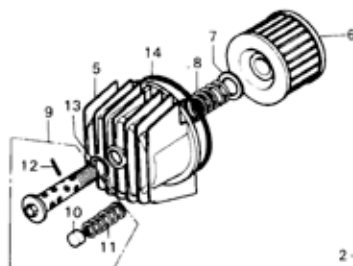
www.honda4fun.com

C 15

Block No.

E-11

Oil Filter • Oil Pan



8323-65

| Service Item | F.R.T. | Ref. No. | Part No. | Description | Reqd. No. CB500K2 | Serial No. | Area Code |
|--|--------|----------|---------------|-------------------------------------|----------------------|------------|-----------|
| OIL PAN/OIL STRAINER | 0.5 | 1 | 11210-323-000 | PAN, OIL | 1 | | |
| OIL FILTER ELEMENT and its related parts | 0.2 | 2 | 11398-323-000 | GASKET, OIL PAN | 1 | | |
| | | 3 | 15150-300-000 | SCREEN, OIL STRAINER | 1 | | |
| | | 4 | 15150-323-000 | STRAINER ASSY., OIL | 1 | | |
| | | 5 | 15411-300-010 | CASE, OIL FILTER | 1 | | |
| | | 6 | 15412-300-024 | ELEMENT, OIL FILTER (TOKYO ROKI) | 1 | | |
| | | 7 | 15414-300-000 | SEAT, OIL FILTER SPRING | 1 | | |
| | | 8 | 15415-300-000 | SPRING, OIL FILTER ELEMENT SET | 1 | | |
| | | 9 | 15420-300-020 | BOLT COMP., OIL FILTER CENTER | 1 | | |
| | | 10 | 15473-300-300 | VALVE, CHECK | 1 | | |
| | | 11 | 15474-300-310 | SPRING, CHECK VALVE | 1 | | |
| | | 12 | 15477-300-300 | PIN, SPRING SET | 1 | | |
| | | 13 | 91302-028-000 | O-RING, 15X2.5 | 1 | | |
| | | 14 | 91316-300-003 | O-RING, 89X4.5 | 1 | | |
| | | | 91316-100-005 | O-RING, 89X4.5 | 1 | | |
| | | 15 | 92800-12000 | BOLT, DRAIN PLUG, 12MM | 1 | | |
| | | 16 | 94109-12000 | WASHER, DRAIN PLUG 12MM | 1 | | |
| | | 17 | 95700-06032 | BOLT, FLANGE, 6X32 | 10 | | |

1976.05.29

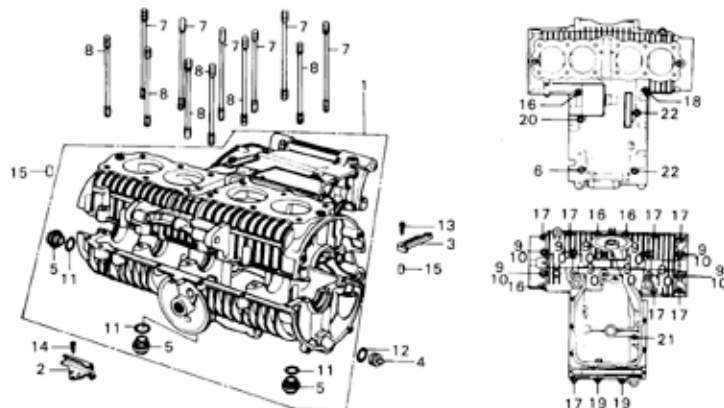
G15

C 16

Block No.

E-12

Crankcase



8323-86

| Service Item | F.R.T. | Ref. No. | Part No. | Description | Reqd. No. GB500K2 | Serial No. | Area Code |
|--------------------|--------|----------|---------------|-----------------------|----------------------|------------|-----------|
| CRANKCASE SET | +8.0 | 1 | 11000-323-000 | CRANKCASE SET | 1 | | |
| CYLINDER STUD BOLT | 2.8 | 2 | 11202-323-000 | GUIDE A: OIL | 1 | | |
| +Add 0.1 | | 3 | 11203-323-010 | GUIDE B: OIL | 1 | | |
| | | 4 | 11207-323-000 | PLUG: OIL PATH | 1 | | |
| | | 5 | 15331-300-000 | CAP: OIL PATH | 3 | | |
| | | 6 | 90011-323-000 | BOLT: FLANGE: 8X14.5 | 1 | | |
| | | 7 | 90033-323-000 | BOLT A: CYLINDER STUD | 6 | | |
| | | 8 | 90034-323-000 | BOLT B: CYLINDER STUD | 6 | | |
| | | 9 | 90084-323-000 | BOLT: HEX: 8X100 | 10 | | |
| | | 10 | 90485-035-000 | WASHER: 14MM | 10 | | |
| | | 11 | 91315-044-000 | O-RING: 19.4X2.8 | 3 | | |
| | | 12 | 91319-300-000 | O RING 13X2.5 | 1 | | |
| | | 13 | 93901-25310 | SCREW: TAPPING: 5X16 | 1 | | |
| | | 14 | 93901-26110 | SCREW: TAPPING: 6X12 | 1 | | |
| | | 15 | 94302-10160 | PIN: DOWEL: 10X16 | 2 | | |
| | | 16 | 95700-06032 | BOLT: FLANGE: 6X32 | 4 | | |
| | | 17 | 95700-06040 | BOLT: FLANGE: 6X40 | 7 | | |
| | | 18 | 95700-06050 | BOLT: FLANGE: 6X50 | 1 | | |
| | | 19 | 95700-06055 | BOLT: FLANGE: 6X55 | 2 | | |
| | | 20 | 95700-06100 | BOLT: FLANGE: 6X100 | 1 | | |
| | | 21 | 95700-06105 | BOLT: FLANGE: 6X105 | 1 | | |
| | | 22 | 95700-08100 | BOLT: FLANGE: 8X100 | 2 | | |

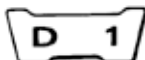
1976.05.20

G16

Courtesy of
www.honda4fun.com



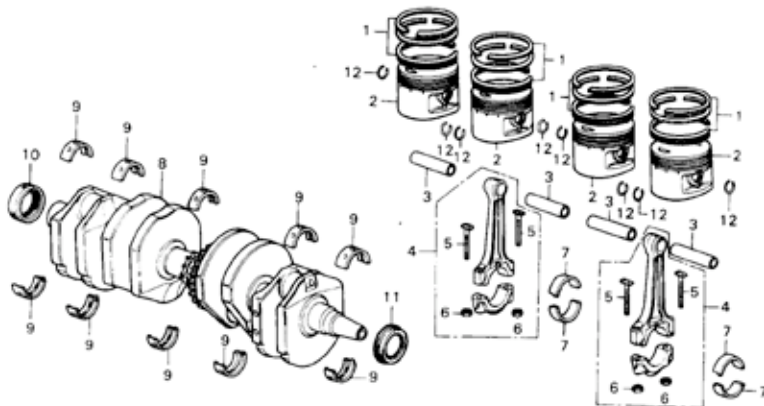
Honda4Fun 23
www.honda4fun.com



Block No.

E-13

Crankshaft - Piston



8374-25

| Service Item | F.R.T. | Ref. No. | Part No. | Description | Reqd. No. CB500K2 | Serial No. | Area Code |
|---------------------------------------|--------|----------|---------------|-----------------------------------|-------------------|------------|-----------|
| CRANKSHAFT COMP. | 07.5 | 1 | 13011-323-013 | RING SET+ PISTON (STD. NIPPON) | 4 | | |
| CRANKSHAFT BEARING | 06.8 | | 13011-323-014 | RING SET+ PISTON (STD. RIKEN) | 4 | | |
| *One or all | | | 13021-323-013 | RING SET+ PISTON (0.25 NIPPON) | (4) | | |
| CONNECTING ROD/CONNECTING ROD BEARING | 06.5 | | 13031-323-014 | RING SET+ PISTON (0.25 RIKEN) | (4) | | |
| *Add 0.4 | | | 13031-323-013 | RING SET+ PISTON (0.50 NIPPON) | (4) | | |
| PISTON/PISTON RING | 2.8 | | 13041-323-013 | RING SET+ PISTON (0.50 RIKEN) | (4) | | |
| *Add 0.1 | | | 13051-323-013 | RING SET+ PISTON (0.75 NIPPON) | (4) | | |
| PISTON PIN | 2.7 | | 13051-323-014 | RING SET+ PISTON (0.75 RIKEN) | (4) | | |
| | | 2 | 13101-323-000 | PISTON (STD.) | 4 | | |
| | | | 13102-323-000 | PISTON (0.25) | (4) | | |
| | | | 13103-323-000 | PISTON (0.50) | (4) | | |
| | | | 13104-323-000 | PISTON (0.75) | (4) | | |
| | | | 13105-323-000 | PISTON (1.00) | (4) | | |
| | | 3 | 13111-286-000 | PIN+ PISTON | 4 | | |
| | | 4 | 13204-323-000 | ROD COMP.D+ CONNECTING | 4 | | |
| | | | 13205-323-000 | ROD COMP.E+ CONNECTING | 4 | | |
| | | | 13206-323-000 | ROD COMP.F+ CONNECTING | 4 | | |
| | | 5 | 13213-333-003 | BOLT+ CONNECTING ROD (TOKAI) | 8 | | |
| | | 6 | 13214-300-000 | NUT+ CONNECTING ROD | 8 | | |
| | | 7 | 13215-323-003 | BEARING A+ CONNECTING ROD (DAIDO) | 8 | | |
| | | | 13216-323-003 | BEARING B+ CONNECTING ROD (DAIDO) | 8 | | |
| | | | 13217-323-003 | BEARING C+ CONNECTING ROD (DAIDO) | 8 | | |
| | | | 13218-323-003 | BEARING D+ CONNECTING ROD (DAIDO) | 8 | | |

1976.05.20

01

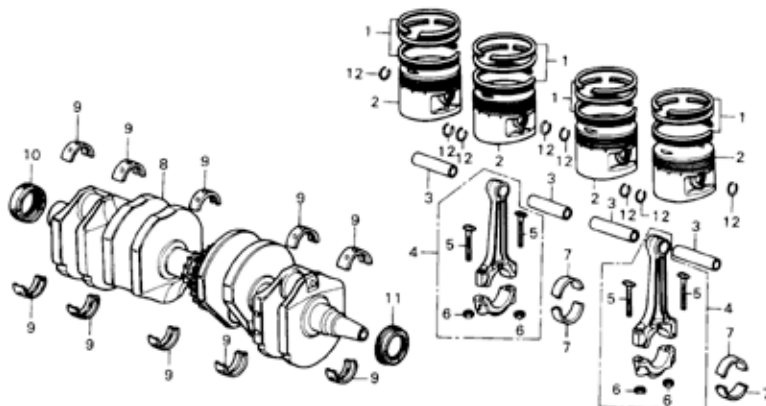


D 2

Block No.

E-13

Crankshaft • Piston



8374-25

| Service Item | F.R.T. | Ref. No. | Part No. | Description | Reqd. No. CB500K2 | Serial No. | Area Code |
|--------------|--------|----------|---------------|------------------------|----------------------|------------|-----------|
| | | 8 | 13300-323-000 | CRANKSHAFT COMP. | 1 | | |
| | | 9 | 13315-323-000 | BEARING A; CRANKSHAFT | 10 | | |
| | | 10 | 13316-323-000 | BEARING B; CRANKSHAFT | 10 | | |
| | | 11 | 13317-323-000 | BEARING C; CRANKSHAFT | 10 | | |
| | | 12 | 13318-323-000 | BEARING D; CRANKSHAFT | 10 | | |
| | | 13 | 91201-300-003 | OIL SEAL; 30X42X8 | 1 | | |
| | | 14 | 91201-323-005 | OIL SEAL; 30X45X8 | 1 | | |
| | | 15 | 94601-15000 | CLIP; PISTON PIN; 15MM | 8 | | |

Selection table of connecting rod big end bearing

| Connecting rod clearance | A | B | C | D |
|--------------------------|-------|-------|-------|-------|
| 30° +0.008 -0.004 | 18-43 | 19-44 | 20-45 | 21-46 |
| 30° +0.021 +0.014 | 18-43 | 19-44 | 20-45 | 21-46 |
| 30° +0.014 +0.007 | 18-43 | 19-44 | 20-45 | 21-46 |
| 30° +0.007 -0 | 18-43 | 19-44 | 20-45 | 21-46 |

Alber

Selection table of crankshaft journal main bearing

| Crankshaft clearance | 1 | 2 | 3 | 4 |
|----------------------|-------|-------|-------|-------|
| 30° +0.008 -0.010 | 20-46 | 21-47 | 22-48 | 23-49 |
| 30° +0.006 -0.002 | 20-46 | 21-47 | 22-48 | 23-49 |
| 30° +0.010 -0.002 | 20-46 | 21-47 | 22-48 | 23-49 |
| 30° +0.018 -0.010 | 20-46 | 21-47 | 22-48 | 23-49 |

Alber

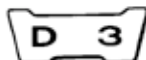
1976.05.20

92

Courtesy of
www.hondafour.com

Honda4Fun
www.honda4fun.com

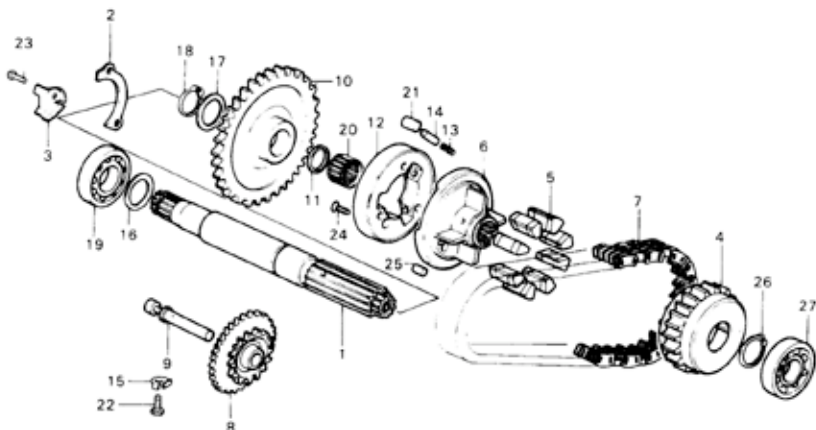
25



Block No.

E-14

Primary Shaft • Chain



8323-07

| Service Item | F.R.T. | Ref. No. | Part No. | Description | Reqd. No. CB500K2 | Serial No. | Area Code |
|-------------------------------------|--------|----------|---------------|------------------------------------|-------------------|------------|-----------|
| PRIMARY DRIVE CHAIN | >7.6 | 1 | 23100-323-000 | SHAFT COMP. PRIMARY | 1 | | |
| STARTER REDUCTION GEAR | >5.0 | 2 | 23102-323-000 | PLATE+ BEARING SET | 1 | | |
| PRIMARY SHAFT and its related parts | <4.5 | 3 | 23106-323-000 | PLATE+ OIL GUIDE | 1 | | |
| | | 4 | 23111-323-010 | SPROCKET+ PRIMARY DRIVEN | 1 | | |
| | | 5 | 23114-323-000 | RUBBER+ DAMPER | 8 | | |
| | | 6 | 23121-323-010 | HUB+ PRIMARY DRIVE SPROCKET | 1 | | |
| | | 7 | 23131-323-003 | CHAIN+ PRIMARY DRIVE | 1 | | |
| | | 8 | 28101-323-000 | GEAR+ STARTER REDUCTION | 1 | | |
| | | 9 | 28106-323-000 | SHAFT+ STARTER REDUCTION GEAR | 1 | | |
| | | 10 | 28111-363-000 | GEAR+ STARTING CLUTCH | 1 | | |
| | | 11 | 28112-323-000 | SPACER+ 25MM | 1 | | |
| | | 12 | 28120-323-000 | OUTER+ STARTING CLUTCH | 1 | | |
| | | 13 | 28125-323-000 | SPRING+ STARTING CLUTCH ROLLER | 3 | | |
| | | 14 | 28126-323-000 | CAP+ STARTING CLUTCH ROLLER SPRING | 3 | | |
| | | 15 | 90433-283-000 | WASHER+ LOCK+ 6MM | 1 | | |
| | | 16 | 90456-323-000 | WASHER+ THRUST+ 22MM | 1 | | |
| | | 17 | 90555-700-000 | WASHER+ THRUST+ 25MM | 1 | | |
| | | 18 | 90602-259-010 | CIR CLIP+ 25MM | 1 | | |
| | | 19 | 91001-116-008 | BEARING+ RADIAL BALL+ 6322 (TOYO) | 1 | | |
| | | 20 | 91007-323-000 | BEARING+ NEEDLE+ 25x29x17 | 1 | | |
| | | 21 | 91103-259-000 | ROLLER+ 10.2X11.5 | 3 | | |
| | | 22 | 92000-06012 | BOLT+ HEX+ 6X12 | 1 | | |
| | | 23 | 93500-06016 | SCREW+ PAN+ 6X16 | 1 | | |
| | | 24 | 93600-06018 | SCREW+ FLAT+ 6X18 | 3 | | |
| | | | | 1976.05.20 | 03 | | |

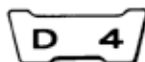
Courtesy of



Honda4Fun

www.honda4fun.com

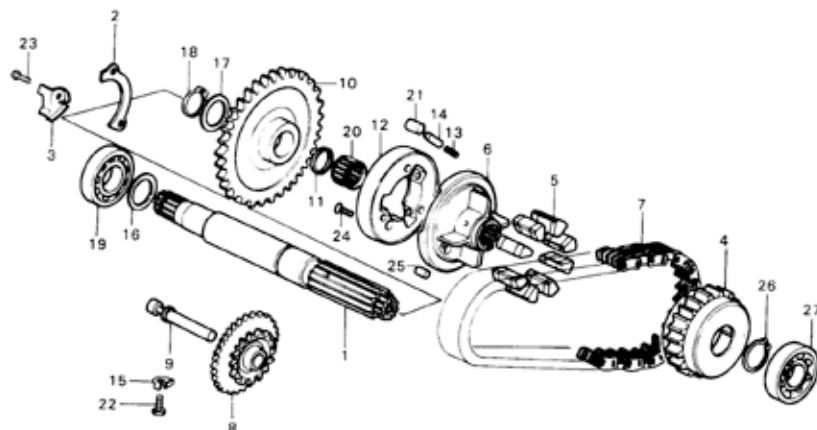
www.honda4fun.com



Block No.

E-14

Primary Shaft • Chain



8023-87

| Service Item | F.R.T. | Ref. No. | Part No. | Description | Reqd. No. CB500K2 | Serial No. | Area Code |
|--------------|--------|----------|-------------|----------------------------|----------------------|------------|-----------|
| | | 25 | 94303-08140 | PIN; KNOCK; 8X14 | 1 | | |
| | | 26 | 94510-30000 | CIR CLIP; EXTERNAL; 30MM | 1 | | |
| | | 27 | 96100-62050 | BEARING; RADIAL BALL; 6205 | 1 | | |

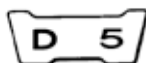
1976-05-20

04

Courtesy of
www.hondafour.com



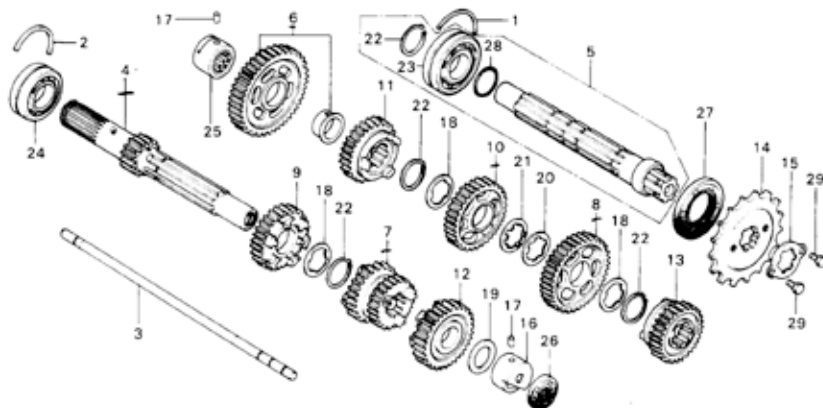
Honda4Fun
www.honda4fun.com



Block No.

E-15

Transmission



8323-88

| Service Item | F.R.T. | Ref. No. | Part No. | Description | Reqd. No. CB500K2 | Serial No. | Area Code |
|---|--------|----------|---------------|---|----------------------|------------|-----------|
| TRANSMISSION MAINSHAFT and its related parts | 5.4 | 1 | 13491-283-000 | RING+ BEARING SET+ 57MM | 1 | | |
| •TRANSMISSION COUNTERSHAFT and its related parts | | 2 | 13492-283-000 | RING+ BEARING SET+ 52MM | 1 | | |
| •One motorcycle 15.7 at transmission | | 3 | 22850-323-000 | ROD+ CLUTCH LIFTER | 1 | | |
| KICK STARTER SPINDLE and its related parts | 5.2 | 4 | 23210-323-000 | SHAFT COMP+ TRANSMISSION MAIN | 1 | | |
| KICK STARTER SPRING | 0.6 | 5 | 23220-323-000 | SHAFT+ TRANSMISSION COUNTER | 1 | | |
| DRIVE SPROCKET | 0.2 | 6 | 23420-323-010 | GEAR+ COUNTER SHAFT LOW | 1 | | |
| | | 7 | 23431-323-000 | GEAR+ MAIN SHAFT SECOND THIRD (22T, 26T) | 1 | | |
| | | 8 | 23441-286-020 | GEAR+ COUNTER SHAFT SECOND (36T) | 1 | | |
| | | 9 | 23451-323-000 | GEAR+ MAIN SHAFT FOURTH (28T) | 1 | | |
| | | 10 | 23461-286-030 | GEAR+ COUNTERSHAFT THIRD (33T) | 1 | | |
| | | 11 | 23471-286-010 | GEAR+ COUNTERSHAFT FOURTH (29T) | 1 | | |
| | | 12 | 23481-323-000 | GEAR+ MAIN SHAFT TOP (30T) | 1 | | |
| | | 13 | 23491-374-000 | GEAR+ COUNTERSHAFT TOP (27T) | 1 | | |
| | | 14 | 23801-300-010 | SPROCKET+ DRIVE (17T) | 1 | | |
| | | 15 | 23811-292-000 | PLATE+ DRIVE SPROCKET FIXING | 1 | | |
| | | 16 | 23931-323-004 | BEARING+ NEEDLE+ 20MM (KOYO) | 1 | | |
| | | 17 | 24261-283-000 | PIN+ GEAR SHIFT FORK GUIDE | 2 | | |
| | | 18 | 90451-286-000 | WASHER+ THRUST+ 25MM | 3 | | |
| | | 19 | 90458-292-000 | WASHER+ THRUST+ 20MM | 1 | | |
| | | 20 | 90461-286-000 | WASHER+ THRUST+ 25MM | 1 | | |
| | | 21 | 90462-323-000 | WASHER+ LOCK+ 25MM | 1 | | |
| | | 22 | 90602-259-010 | CTR CLIP+ 25MM | 4 | | |

1976.05.20

05

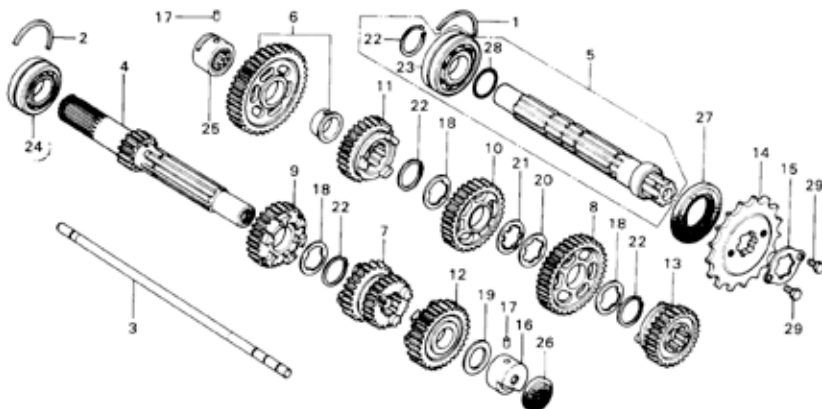




Block No.

E-15

Transmission



8323-88

| Service Item | F.R.T. | Ref. No. | Part No. | Description | Reqd. No. CB500K2 | Serial No. | Area Code |
|--------------|--------|----------|---------------|---|----------------------|------------|-----------|
| | | 23 | 91002-283-003 | BEARING, SPECIAL BALL, 5205 (FUJIKOSHI) | 1 | | |
| | | 24 | 91002-286-008 | BEARING, BALL, 5205MS (TOYO) | 1 | | |
| | | 25 | 91022-286-016 | BEARING, NEEDLE, 20MM (TOMSON) | 1 | | |
| | | 26 | 91203-292-003 | OIL SEAL, 8X34X8 | 1 | | |
| | | | 91203-292-005 | OIL SEAL, 8X34X8 | 1 | | |
| | | 27 | 91205-283-010 | OIL SEAL, 33X57X7 | 1 | | |
| | | 28 | 91306-703-000 | O-RING, 24.5MM | 1 | | |
| | | 29 | 92000-06012 | BOLT, HEX., 6X12 | 2 | | |

1976.05.20

06

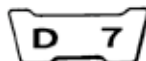
Courtesy of

www.hondafour.com



Honda4Fun

www.honda4fun.com



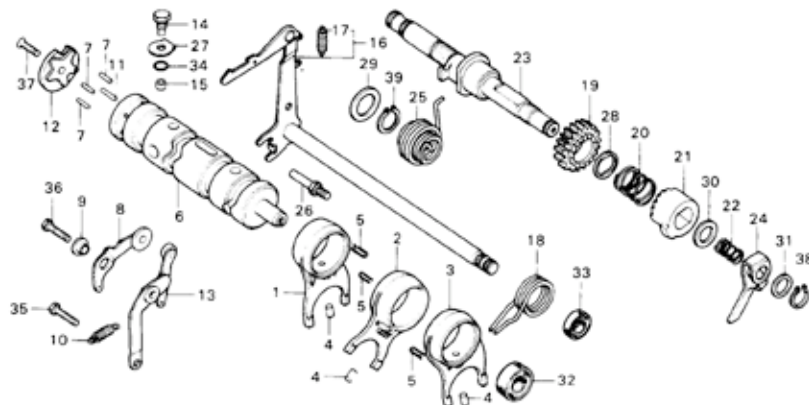
Block No.

E-16

Shift Drum •

Shift Fork •

Kick Spindle



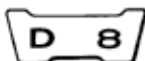
0323-89

| Service Item | F.R.T. | Ref. No. | Part No. | Description | Regd. No. CB500K2 | Serial No. | Area Code |
|--|--------|----------|---------------|------------------------------|----------------------|------------|-----------|
| GEAR SHIFT DRUM/GEAR SHIFT FORK and those related parts | 05.2 | 1 | 24211-323-000 | FORK, RIGHT GEAR SHIFT | 1 | | |
| | | 2 | 24212-286-030 | FORK, B, GEAR SHIFT | 1 | | |
| | | 3 | 24213-323-000 | FORK, LEFT GEAR SHIFT | 1 | | |
| SHIFT DRUM STOPPER/GEAR SHIFT SPINDLE and those related parts | 1.1 | 4 | 24261-283-000 | PIN, GEAR SHIFT FORK GUIDE | 3 | | |
| | | 5 | 24263-286-000 | CLIP, GEAR SHIFT FORK GUIDE | 3 | | |
| | | | | PIN | | | |
| | | 6 | 24301-286-050 | DRUM, GEAR SHIFT | 1 | | |
| | | 7 | 24421-230-000 | PIN, GEAR SHIFT DRUM | 3 | | |
| | | 8 | 24430-323-020 | STOPPER COMP., SHIFT DRUM | 1 | | |
| | | 9 | 24433-323-010 | COLLAR, SHIFT DRUM STOPPER | 1 | | |
| | | 10 | 24435-323-020 | SPRING, SHIFT DRUM STOPPER | 1 | | |
| | | 11 | 24437-323-000 | PIN, B, GEAR SHIFT DRUM | 1 | | |
| | | 12 | 24439-323-000 | PLATE COMP., CAM | 1 | | |
| | | 13 | 24440-323-000 | STOPPER, SHIFT DRUM | 1 | | |
| | | 14 | 24446-323-000 | SCREW, SHIFT DRUM GUIDE | 1 | | |
| | | 15 | 24447-323-000 | COLLAR, SCREW GUIDE | 1 | | |
| | | 16 | 24610-323-000 | SPINDLE, GEAR SHIFT | 1 | | |
| | | 17 | 24641-216-000 | SPRING, GEAR SHIFT ARM | 1 | | |
| | | 18 | 24651-286-000 | SPRING, GEAR SHIFT RETURN | 1 | | |
| | | 19 | 28211-323-000 | PINION, KICK STARTER | 1 | | |
| | | 20 | 28215-216-000 | SPRING, STARTER PINION SET | 1 | | |
| | | 21 | 28221-310-010 | RATCHET, KICK STARTER | 1 | | 2170349 |
| | | 22 | 28221-310-020 | RATCHET, KICK STARTER | 1 | 2170349 | |
| | | 23 | 28223-216-000 | SPRING, KICK STARTER RATCHET | 1 | | |
| | | 24 | 28251-323-000 | SPINDLE, KICK STARTER | 1 | | |
| | | 25 | 28258-310-010 | PLATE, RATCHET GUIDE | 1 | | |

1976.05.20

07





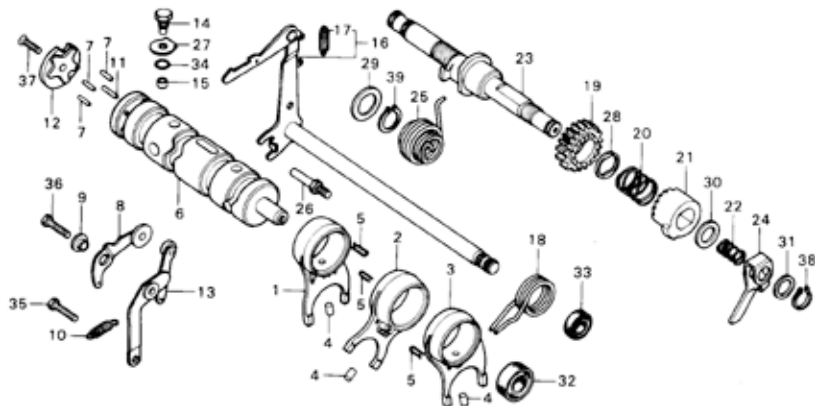
Block No.

E-16

Shift Drum •

Shift Fork •

Kick Spindle



8303-89

| Service Item | F.R.T. | Ref. No. | Part No. | Description | Reqd. No. CB500K2 | Serial No. | Area Code |
|--------------|--------|----------|---------------|---------------------------------------|----------------------|------------|-----------|
| | | 25 | 28261-323-000 | SPRING, KICK STARTER | 1 | | |
| | | 26 | 90015-286-000 | PIN, RETURN SPRING | 1 | | |
| | | 27 | 90434-286-000 | WASHER, LOCK, 12 MM | 1 | | |
| | | 28 | 90451-216-000 | WASHER, THRUST, 20MM | 1 | | |
| | | 29 | 90453-286-003 | WASHER, 18MM (KOYO) | 1 | | |
| | | 30 | 90454-200-000 | WASHER, THRUST, 15MM | 1 | | |
| | | 31 | 90457-500-000 | WASHER, CAM CHAIN GUIDE ROLLER THRUST | 1 | | |
| | | 32 | 91201-292-003 | OIL SEAL, 12X25X4.5 | 1 | | |
| | | 33 | 91202-216-000 | OIL SEAL, SH TYPE, 14X24X5 | 1 | | |
| | | 34 | 91304-216-000 | O-RING, 11.5X2 | 1 | | |
| | | 35 | 92000-06020 | BOLT, HEX., 6X20 | 1 | | |
| | | 36 | 92020-06020 | BOLT, HEX., 6X20 | 1 | | |
| | | 37 | 93600-06020 | SCREW, FLAT, 6X20 | 1 | | |
| | | 38 | 94510-12000 | CIR CLIP, EXTERNAL, 12MM | 1 | | |
| | | 39 | 94510-18000 | CIR CLIP, EXTERNAL, 18MM | 1 | | |

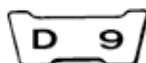
1976.05.20

08

Courtesy of
www.hondafour.com



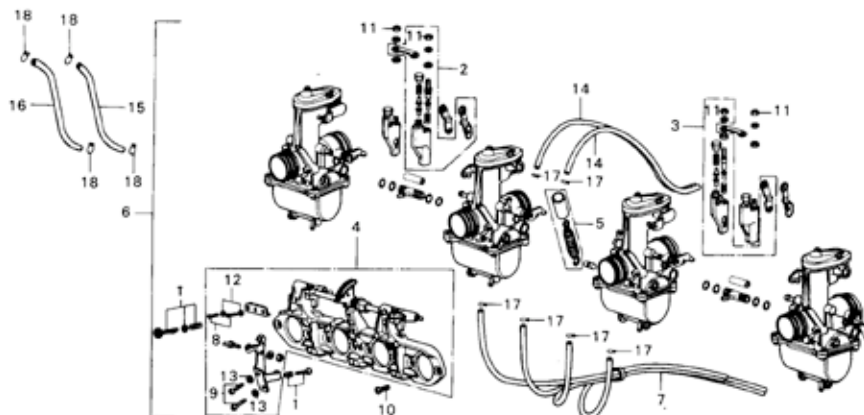
Honda4Fun
www.honda4fun.com



Block No.

E-17

Carburetor



8323-103

| Service Item | F.R.T. | Ref. No. | Part No. | Description | Reqd. No. CB500K2 | Serial No. | Area Code |
|-------------------|--------|----------|----------------|-----------------------|----------------------|------------|-----------|
| CARBURETOR ASSY. | 0.8 | 1 | 16028-323-004 | SCREW SET H | 1 | | |
| STAY PLAY SET | 1.5 | 2 | 16029-323-004 | HOLDER SET A; ADJUST | 2 | | |
| ADJUST HOLDER SET | 1.1 | 3 | 16030-323-004 | HOLDER SET B; ADJUST | 2 | | |
| SCREW SET | 0.2 | 4 | 16035-390-004 | PLATE SET; STAY | 1 | | |
| | | 5 | 16036-390-004 | TUBE SET; PROTECT | 1 | | |
| | | 6 | 16100-323-014 | CARBURETOR ASSY. | 1 | | F |
| | | | 16100-323-611 | CARBURETOR ASSY. | 1 | | E, G |
| | | 7 | 16290-323-000 | TUBE ASSY.; OVER FLOW | 1 | | |
| | | 8 | 93500-05012-0A | SCREW; PAN; 5X12 | 2 | | |
| | | 9 | 93500-06012 | SCREW; PAN; 6X12 | 2 | | |
| | | 10 | 93600-06016 | SCREW; FLAT; 6X16 | 8 | | |
| | | 11 | 94001-05000-0S | NUT; HEX.; 5MM | 4 | | |
| | | 12 | 94111-05000 | WASHER; SPRING; 5MM | 2 | | |
| | | 13 | 94111-06000 | WASHER; SPRING; 6MM | 2 | | |
| | | 14 | 95001-35330-40 | TUBE; FUEL; 3.5X330 | 2 | | |
| | | 15 | 95001-55170-40 | TUBE; FUEL; 5.5X170 | 1 | | |
| | | 16 | 95001-55280-40 | TUBE; FUEL; 5.5X280 | 1 | | |
| | | 17 | 95002-02070 | CLIP; TUBE; B7 | 6 | | |
| | | 18 | 95002-02100 | CLIP; TUBE; B10 | 4 | | |

1976.05.20

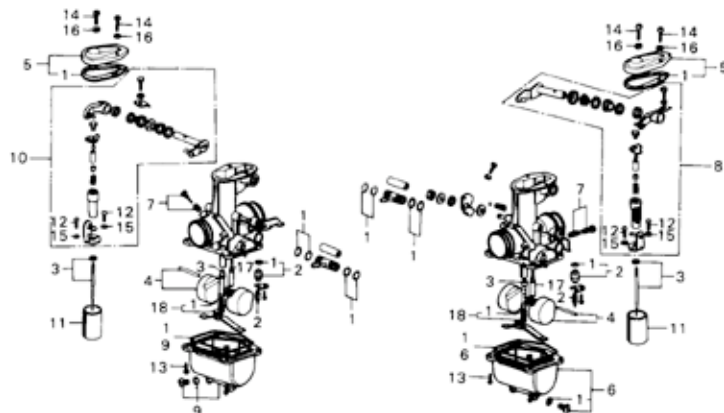
09

D 10

Block No.

E-17-1

**Carburetor
(Component Parts)**



8374-28

| Service Item | F.R.T. | Ref. No. | Part No. | Description | Reqd. No. CB500K2 | Serial No. | Area Code |
|---|--------|----------|----------------|--------------------------------|-------------------|------------|-----------|
| GASKET SET •Add 0.6 | 1.5 | 1 | 16010-323-004 | GASKET SET | 4 | | |
| JET NEEDLE SET •FLOAT/FLOAT VALVE SET •Add 0.3 | 1.1 | 2 | 16011-329-004 | VALVE SET+ FLOAT | 4 | | |
| JET and its related parts (Exclude JET NEEDLE) •Add 0.2 | 1.0 | 3 | 16012-323-004 | NEEDLE SET+ JET | 4 | | |
| FLOAT CHAMBER SET •Add 0.1 | 0.9 | 4 | 16013-329-004 | FLOAT SET | 4 | | |
| TOP SET •Add 0.1 | 0.8 | 5 | 16014-323-004 | TOP SET | 4 | | |
| | | 6 | 16015-323-004 | CHAMBER SET A+ FLOAT | 2 | | |
| | | 7 | 16016-323-004 | SCREW SET A | 4 | | |
| | | 8 | 16018-323-004 | ARM SET A+ LINK | 2 | | |
| | | 9 | 16023-323-004 | CHAMBER SET B+ FLOAT | 2 | | |
| | | 10 | 16031-323-004 | ARM SET B+ LINK | 2 | | |
| | | 11 | 16111-323-004 | VALVE+ THROTTLE | 4 | | |
| | | 12 | 93500-03010-04 | SCREW+ PAN+ 3X10 | 8 | | |
| | | 13 | 93500-04010-04 | SCREW+ PAN+ 4X10 | 20 | | |
| | | 14 | 93500-05016-04 | SCREW+ PAN+ 5X16 | 8 | | |
| | | 15 | 94111-03000 | WASHER+ SPRING+ 3MM | 8 | | |
| | | 16 | 94111-05000 | WASHER+ SPRING+ 5MM | 8 | | |
| | | 17 | 93124-076-0400 | JET+ SLOW (#40) | 4 | | |
| | | 18 | 99202-601-0780 | JET SET+ MAIN (#78) | 4 | | E+G |
| | | | 99202-601-1000 | JET SET+ SECONDARY MATN (#100) | 4 | | F |

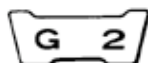
1976.05.20

010

Courtesy of
www.hondafour.com



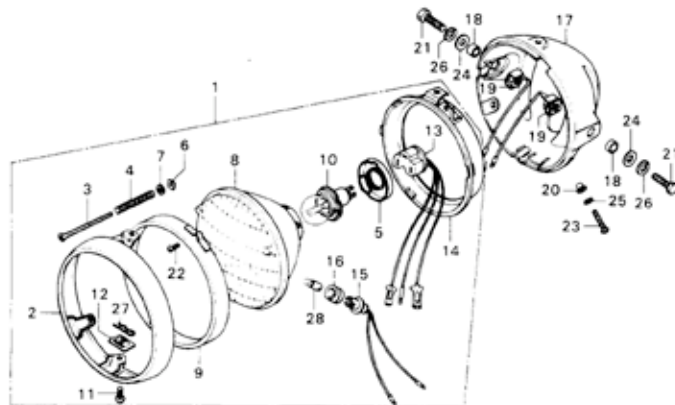
Honda4Fun
www.honda4fun.com



Block No.

F-1

Head Light



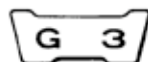
8341-2

| Service Item | F.R.T. | Ref. No. | Part No. | Description | Reqd. No. CB500K2 | Serial No. | Area Code |
|--|--------|----------|---------------|---|-------------------|------------|-----------|
| HEADLIGHT CASE | 0.3 | 1 | 33100-390-611 | LIGHT ASSY., HEAD (12V45/40W STANLEY) | 1 | | ENG |
| SEAL & BEAM UNIT and its related parts | 0.2 | | 33100-390-621 | LIGHT ASSY., HEAD (12V45/40W STANLEY) | 1 | | F |
| HEADLIGHT ASSY./HEADLIGHT | 0.1 | | | | | | |
| CORD SOCKET | | | | | | | |
| | | 2 | 33101-300-673 | RIM, HEAD LIGHT | 1 | | |
| | | 3 | 33103-346-670 | SCREW, BEAM ADJUST | 1 | | |
| | | 4 | 33107-300-003 | SPRING, HEAD LIGHT BEAM ADJUSTING | 1 | | |
| | | 5 | 33114-390-611 | HOLDER, HEAD LIGHT SOCKET | 1 | | |
| | | 6 | 33117-001-003 | NUT, HEAD LIGHT BEAM ADJUSTING | 1 | | |
| | | 7 | 33119-371-003 | WASHER, BEAM ADJUST | 1 | | |
| | | 8 | 33120-390-611 | LIGHT UNIT, HEAD | 1 | | |
| | | 9 | 33121-375-671 | RING, RETAINING | 1 | | |
| | | 10 | 33122-623-621 | BULB, HEAD LIGHT (12V 45/40W) | 1 | | F |
| | | | 33122-623-721 | BULB, HEAD LIGHT (12V45/40W) (PHILLIPS) | 1 | | ENG |

1976, Q5, 20

62

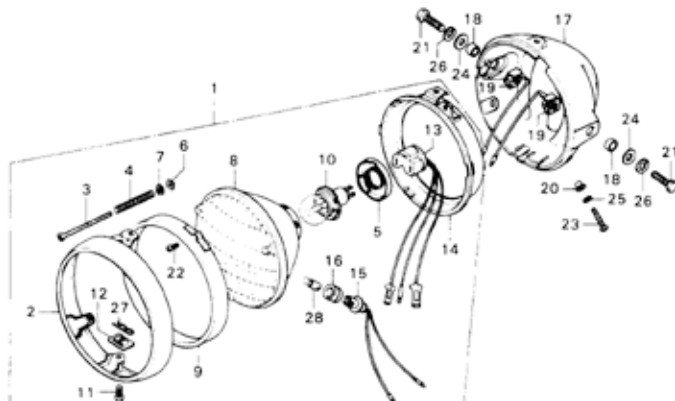




Block No.

F-1

Head Light



8341-2

| Service Item | F.R.T. | Ref. No. | Part No. | Description | Reod. No. CB500K2 | Serial No. | Area Code |
|--------------|--------|----------|----------------|-------------------------------|----------------------|------------|-----------|
| | | 11 | 33125-087-621 | SCREW, UNIT HOLDER | 2 | | |
| | | 12 | 33128-292-670 | NUT, UNIT HOLDER | 2 | | |
| | | 13 | 33130-300-671 | SOCKET COMP., HEAD LIGHT CORD | 1 | | |
| | | 14 | 33153-375-671 | RING, MOUNTING | 1 | | |
| | | 15 | 33170-390-611 | SOCKET COMP., MARKER LIGHT | 1 | | |
| | | 16 | 33905-303-003 | RUBBER, JOINT | 1 | | |
| | | 17 | 61301-300-0208 | CASE, HEAD LIGHT | 1 | | |
| | | 18 | 61302-300-000 | COLLAR, HEAD LIGHT CASE | 2 | | |
| | | 19 | 61303-336-000 | WASHER, HEAD LIGHT CASE | 2 | | |
| | | 20 | 61304-292-000 | COLLAR, HEAD LIGHT SETTING | 3 | | |

1976.05.20

53

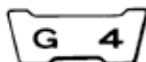
Courtesy of
www.hondafour.com



Honda4Fun
www.honda4fun.com

35

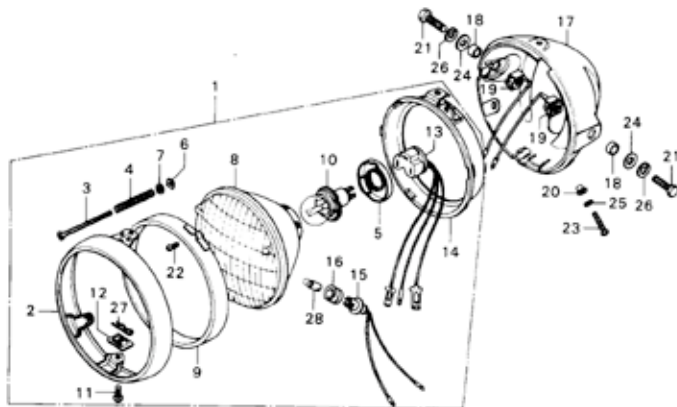
FRAME GROUP



Block No.

F - 1

Head Light



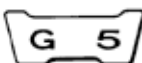
8341-2

| Service Item | F.R.T. | Ref. No. | Part No. | Description | Reqd. No. CB500K2 | Serial No. | Area Code |
|--------------|--------|----------|----------------|---|----------------------|------------|-----------|
| | | 21 | 92000-10025-08 | BOLT, HEX., 10X25 | 2 | | |
| | | 22 | 93500-03012-1A | SCREW, PAN, 3X12 | 2 | | |
| | | 23 | 93500-05016-08 | SCREW, PAN, 5X16 | 3 | | |
| | | 24 | 94101-10200 | WASHER, PLAIN, 10MM | 2 | | |
| | | 25 | 94111-05000 | WASHER, SPRING, 5MM | 3 | | |
| | | 26 | 94111-10800 | WASHER, SPRING, 10MM | 2 | | |
| | | 27 | 94251-05000 | PIN, LOCK, 5MM | 2 | | |
| | | 28 | | BULB, MARKER LIGHT (LOCAL PROCUREMENT) | 1 | | |

1976.05.20

G4

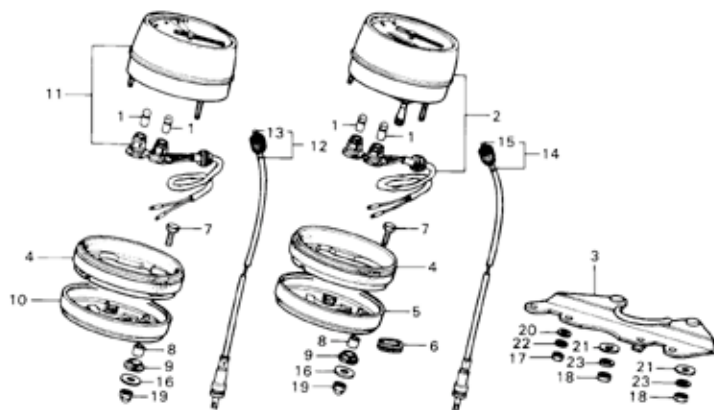




Block No.

F-2

**Speedometer •
Tachometer**



1074-30

| Service Item | F.R.T. | Ref. No. | Part No. | Description | Reqd. No. CB500K2 | Serial No. | Area Code |
|---------------------------------|--------|----------|----------------|--------------------------|----------------------|------------|-----------|
| METER SET PLATE | 0.5 | 1 | 34902-259-000 | BULB: DUSH (12V 3.4W) | 4 | | |
| SPEEDOMETER ASSY. | 0.3 | 2 | 37200-390-681 | SPEEDOMETER ASSY. | 1 | | |
| •TACHOMETER ASSY. | | 3 | 37211-323-701 | PLATE: METER SET | 1 | | |
| SPEEDOMETER CUSHION/UNDER PLATE | 0.2 | 4 | 37235-323-700 | CUSHION: SPEEDOMETER | 2 | | |
| •TACHOMETER CABLE | | 5 | 37236-323-700 | PLATE: SPEEDOMETER UNDER | 1 | | |
| SPEEDOMETER CABLE | 0.1 | 6 | 37237-323-700 | GROMMET: METER PLATE | 1 | | |
| •TACHOMETER INNER CABLE | | 7 | 37238-323-700 | BOLT: METER SET; 6MM | 4 | | |
| •DUSH BULB | | 8 | 37243-323-700 | COLLAR: METER SET | 4 | | |
| | | 9 | 37244-307-670 | RUBBER: METER SET | 4 | | |
| | | 10 | 37246-323-700 | PLATE: TACHOMETER UNDER | 1 | | |
| | | 11 | 37250-390-771 | TACHOMETER ASSY. | 1 | | |
| | | | 37250-390-772 | TACHOMETER ASSY. | 1 | | |
| | | 12 | 37260-390-000 | CABLE ASSY.: TACHOMETER | 1 | | |
| | | 13 | 37261-390-000 | CABLE: TACHOMETER INNER | 1 | | |
| | | 14 | 44830-390-000 | CABLE ASSY.: SPEEDOMETER | 1 | | |
| | | 15 | 44831-323-000 | CABLE: SPEEDOMETER INNER | 1 | | |
| | | 16 | 90545-323-700 | WASHER: 6.5X18 | 4 | | |
| | | 17 | 94001-06070 | NUT: HEX.; 6MM | 4 | | |
| | | 18 | 94001-08070-05 | NUT: HEX.; 8MM | 2 | | |
| | | 19 | 94021-06020 | NUT: HEX.; CAP; 6MM | 4 | | |
| | | 20 | 94101-06700 | WASHER: PLAIN; 6MM | 4 | | |
| | | 21 | 94101-08700 | WASHER: PLAIN; 8MM | 2 | | |
| | | 22 | 94111-06700 | WASHER: SPRING; 6MM | 4 | | |
| | | 23 | 94111-08700 | WASHER: SPRING; 8MM | 2 | | |

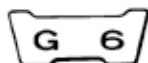
1976.05.20

55

Courtesy of
www.honda4fun.com



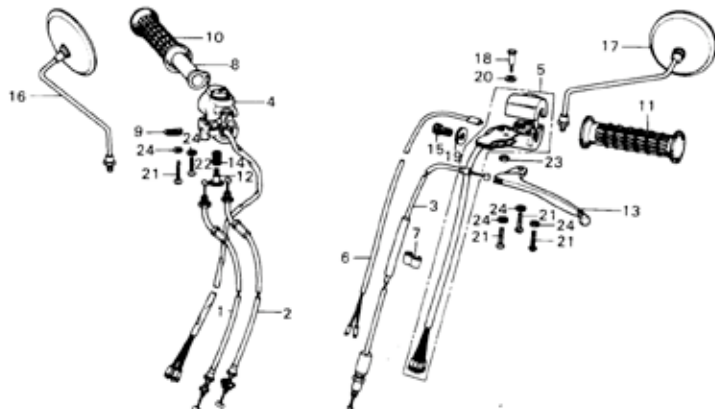
Honda4Fun
www.honda4fun.com



Block No.

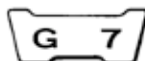
F-3

**Handle Lever •
Switch • Cable**



9374-31

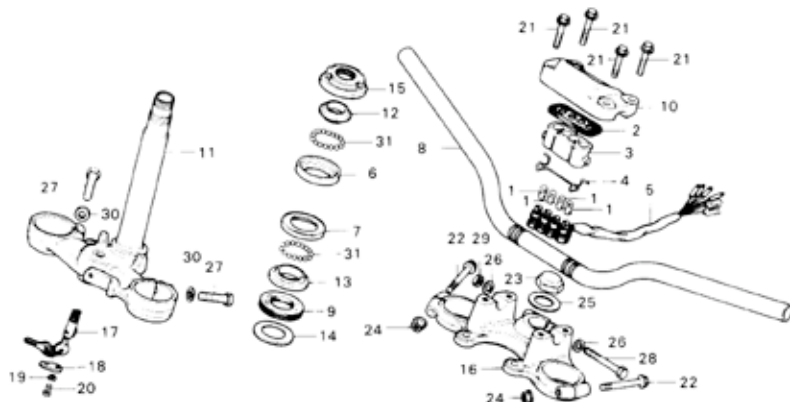
| Service Item | F.R.T. | Ref. No. | Part No. | Description | Reqd. No. CB500K2 | Serial No. | Area Code |
|---------------------------|--------|----------|----------------|-------------------------------|-------------------|------------|-----------|
| STARTER KILL SWITCH ASSY. | 0.6 | 1 | 17910-323-620 | CABLE COMP. A+ THROTTLE | 1 | | |
| WINKER SWITCH ASSY. | 0.5 | 2 | 17920-323-620 | CABLE COMP. B+ THROTTLE | 1 | | |
| THROTTLE CABLE | 0.5 | 3 | 22870-323-621 | CABLE COMP.+ CLUTCH | 1 | | |
| *One or all | | 4 | 35150-341-600 | SWITCH ASSY.+ STARTER & KILL | 1 | | |
| CLUTCH CABLE | 0.4 | 5 | 35200-341-600 | SWITCH ASSY.+ WINKER | 1 | | |
| CLUTCH LEVER SWITCH | 0.2 | 6 | 35360-341-000 | SWITCH ASSY.+ CLUTCH LEVER | 1 | | |
| *THROTTLE GRIP PIPE | | 7 | 45465-341-700 | CLIP+ WIRE | 1 | | |
| GRIP RUBBER | 0.1 | 8 | 53141-300-010 | PIPE+ THROTTLE GRIP | 1 | | |
| *STEERING HANDLE LEVER | | 9 | 53163-300-020 | ADJUSTER+ THROTTLE GRIP | 1 | | |
| BACK MIRROR | 0.1 | 10 | 53165-342-670 | RUBBER+ RIGHT GRIP | 1 | | |
| *One or all | | 11 | 53166-342-670 | RUBBER+ LEFT GRIP | 1 | | ED+G |
| | | 12 | 53190-300-000 | BOLT+ THROTTLE GRIP ADJUSTING | 1 | | F |
| | | 13 | 53190-369-700 | LEVER COMP.+ LEFT STEERING | 1 | | F+G |
| | | 14 | 53191-300-000 | SPRING+ THROTTLE ADJUSTER | 1 | | |
| | | 15 | 53192-312-000 | BOLT+ CLUTCH CABLE ADJUST | 1 | | |
| | | 16 | 88100-333-610 | MIRROR+ RIGHT BACK | 1 | | |
| | | 17 | 88110-304-621 | MIRROR+ RIGHT BACK | (1) | | |
| | | 18 | 88120-304-621 | MIRROR+ LEFT BACK | 1 | | |
| | | 19 | 88120-333-610 | MIRROR+ LEFT BACK | 1 | | |
| | | 20 | 90114-268-020 | BOLT+ HANDLE LEVER PIVOT | 1 | | |
| | | 21 | 90321-315-670 | NUT+ FIXING | 1 | | |
| | | 22 | 90501-310-000 | WASHER+ 7X12 | 1 | | |
| | | 23 | 93500-05025-0A | SCREW+ PAN. 5X25 | 4 | | |
| | | 24 | 93500-05032-0A | SCREW+ PAN. 5X32 | 1 | | |
| | | 25 | 94001-06000 | NUT+ HEX. 6MM | 1 | | |
| | | 26 | 94111-05000 | WASHER+ SPRING+ 5MM | 5 | | |
| | | 27 | 1976-05-20 | | 6 | | |



Block No.

F-4

**Handle Pipe •
Top Bridge • Stem**



8323-90

| Service Item | F.R.T. | Ref. No. | Part No. | Description | Reqd. No. CB500K2 | Serial No. | Area Code |
|-------------------------------------|--------|----------|----------------|--|-------------------|------------|-----------|
| STEERING HANDLE PIPE | 1.2 | 1 | 34902-259-000 | BULB, DUSH (12V 3.4W) | 4 | | |
| STEERING BALL RACE | 1.0 | 2 | 37576-323-000 | BASE, LAMP SOCKET | 1 | | |
| *One or all | | 3 | 37577-341-000 | SOCKET, PILOT LAMP | 1 | | |
| STEERING STEM and its related parts | 0.8 | 4 | 37579-341-010 | SPRING, LAMP SOCKET SET | 1 | | |
| FORK TOP BRIDGE | 0.6 | 5 | 37581-374-670 | CORD COMP., PILOT LAMP | 1 | | |
| STEERING HEAD TOP THREAD/TOP CONE | 0.5 | 6 | 50301-268-305 | RACE, STEERING TOP BALL | 1 | | |
| RACE | | 7 | 50302-268-305 | RACE, STEERING BOTTOM BALL | 1 | | |
| PILOT LAMP CORD | 0.3 | 8 | 53100-390-620 | PIPE, STEERING HANDLE | 1 | | |
| STEERING STEM NUT | 0.2 | 9 | 53124-250-000 | SEAL, STEERING HEAD DUST | 1 | | |
| HANDLE UPPER HOLDER | 0.1 | 10 | 53133-374-670 | HOLDER, UPPER | 1 | | |
| | | 11 | 53200-323-611H | STEM COMP., STEERING | 1 | | |
| | | 12 | 53211-268-305 | RACE, STEERING TOP CONE | 1 | | |
| | | 13 | 53212-250-305 | RACE, STEERING BOTTOM CONE | 1 | | |
| | | 14 | 53215-250-000 | WASHER, STEERING HEAD DUST | 1 | | |
| | | 15 | 53220-286-000 | THREAD COMP., STEERING HEAD TOP | 1 | | |
| | | 16 | 53230-323-020 | BRIDGE, FORK TOP | 1 | | |
| | | 17 | 53600-051-000 | LOCK COMP., HANDLE | 1 | | |
| | | 18 | 53601-051-000 | PLATE, HANDLE LOCK CASE COVER | 1 | | |
| | | 19 | 53602-051-000 | WASHER, HANDLE LOCK CASE COVER PLATE SET | 1 | | |
| | | 20 | 53603-051-000 | RIVET, 4MM | 1 | | |
| | | 21 | 90111-362-000 | BOLT, FLANGE, 8X36 | 4 | | |
| | | 22 | 90155-369-000 | BOLT, FLANGE, 7MM | 2 | | |
| | | 23 | 90304-323-670 | NUT, STEERING STEM | 1 | | |
| | | | 1976.05.20 | | 67 | | |

Courtesy of

www.honda4fun.com



Honda4Fun

www.honda4fun.com