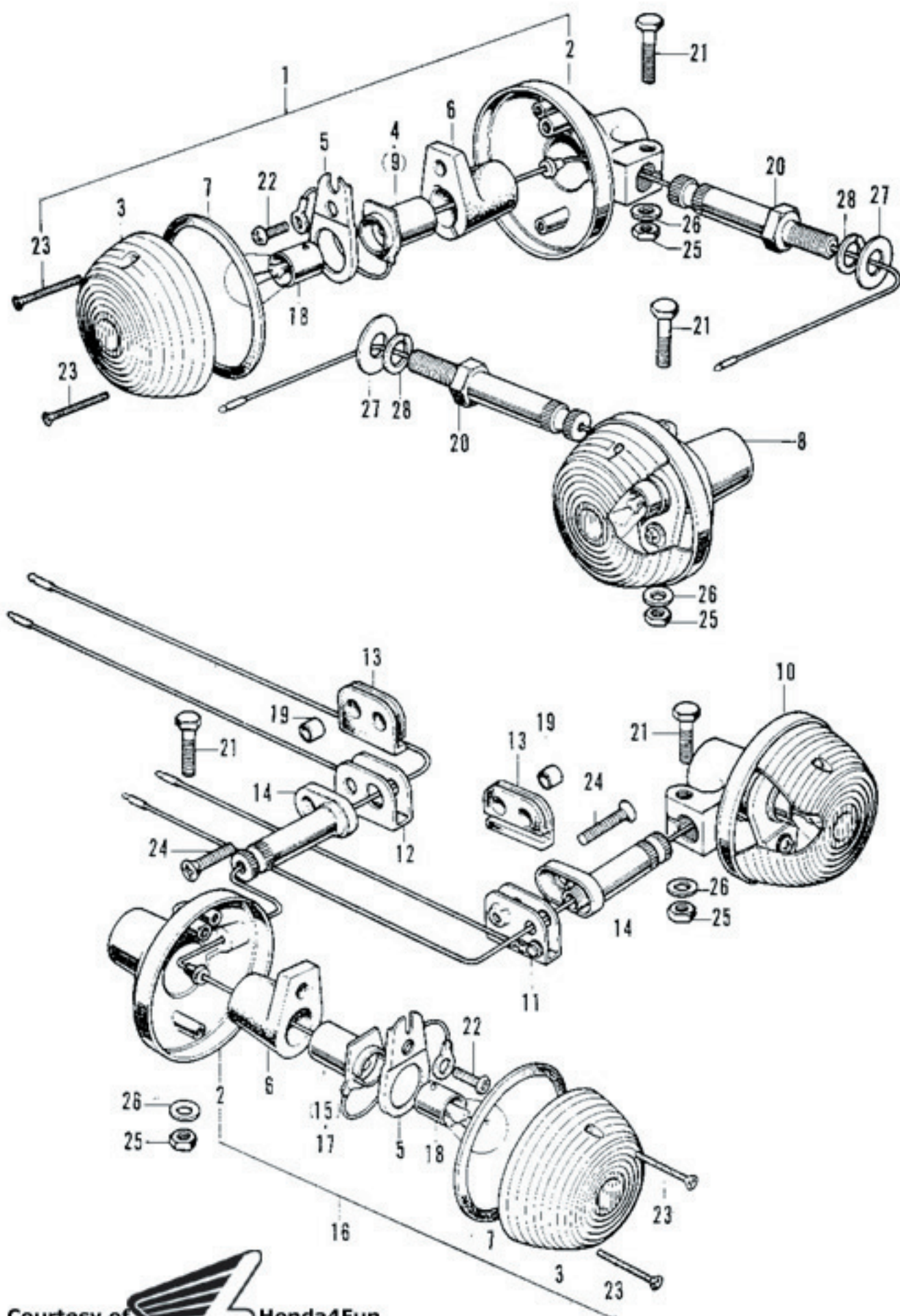


F-28 Winker
(Except for Germany, Netherlands & CB750K2 for U.S.A.)

Ref. No.	Part No.	Description	Reqd. No.			F.R.T.	Remarks
			CB	CB	CB		
			750	750K1	750K2		
21	33650-300-000	WINKER ASSY., left rear (12V 25W) (Not used in E.D.)	1	1	1	0.2	
○22	33650-317-730	WINKER ASSY., left rear (12V 18W) (Used in E.D.)	-	1	-	0.2	
○	33650-323-631	WINKER ASSY., left rear (12V 18W) (Used in E.D.)	-	-	1		
23	33660-300-000	SOCKET COMP., left rear winker (Not available for CB750K1 of E.D. type)	1	1	1		
24	33665-300-730	SUB-CORD, left winker light (Used in E.D.)	-	1	-	0.2	
25	34905-268-671	BULB, winker (12V 23W, Not used in E.D.)	4	4	4	0.1	
26		BULB, winker (12V 18W) (To be locally purchased in E.D.)	-	4	4		
27	90154-268-670	BOLT, light case setting	2	2	2		
28	90324-300-000	COLLAR, 8 mm	2	2	2	0.2	
29	90428-816-650	(Superseded by 90428-844-650)					
	90428-844-650	WASHER, 8 mm	1	1	1	0.1	
30	92000-08032-0B	BOLT, hex., 8×32	2	2	2		
31	93000-06028-02	BOLT, hex., 6×28	4	4	4		
32	93500-05008-0A	SCREW, pan, 5×8	4	4	4		
33	93700-03025-3B	SCREW, oval, 3×25	8	8	8		
34	94001-06000	NUT, hex., 6 mm	4	4	4		
35	94101-06000	WASHER, plain, 6 mm	8	8	8		
36	94101-10200	WASHER, plain, 10 mm	2	2	2		
37	94111-10000	WASHER, spring, 10 mm	2	2	2		

F-29 Winker
(Used in U.S.A.)



F-29 Winker (Used in U.S.A.)

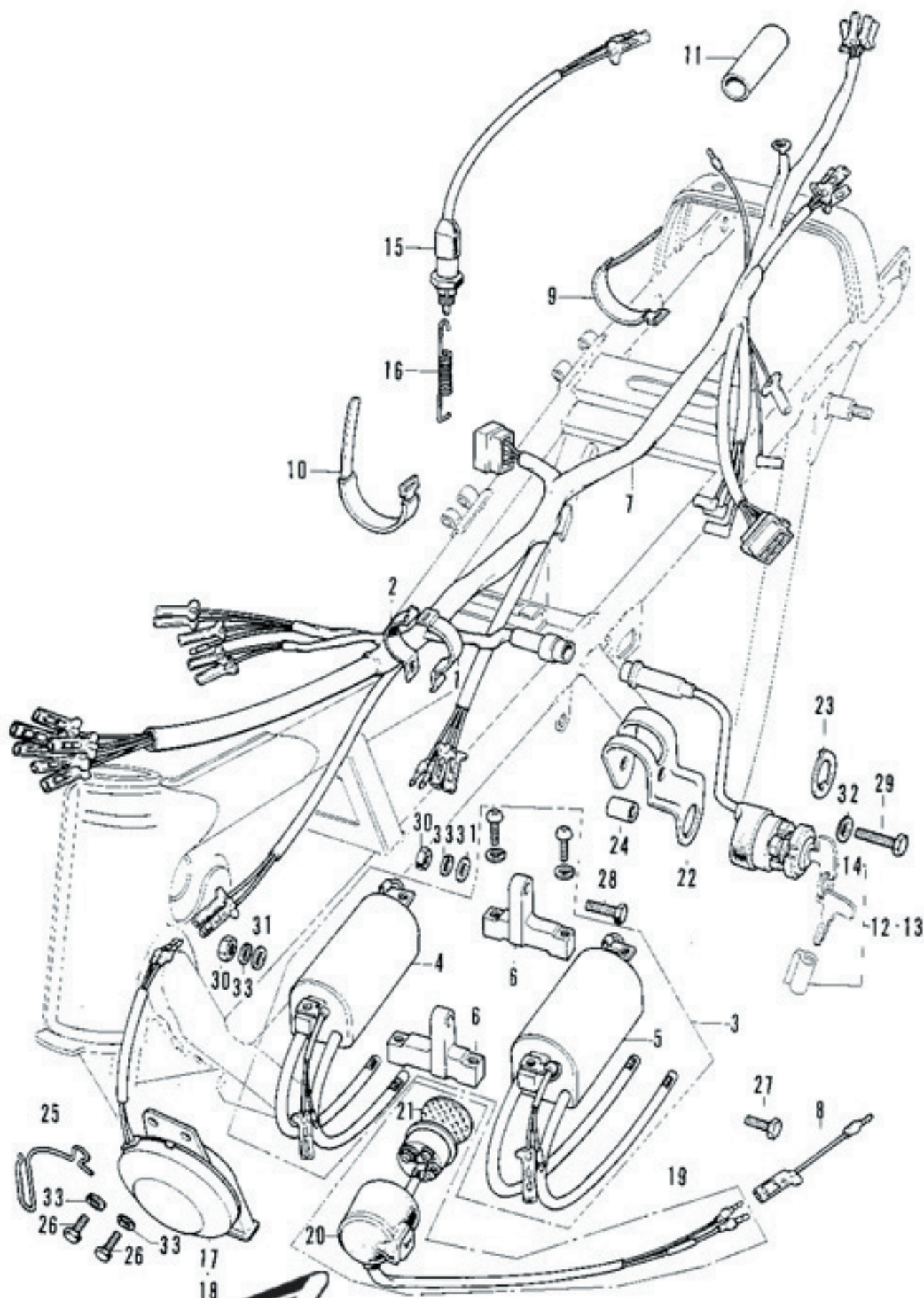
Ref. No.	Part No.	Description	Reqd. No.			F.R.T.	Remarks
			CB 750	CB 750K1	CB 750K2		
1	33400-292-670	WINKER ASSY., right (12V 25W)	-	-	1	0.2	
2	33401-292-003	BASE, winker	-	-	4	0.3	
3	33402-268-671	LENS, winker	-	-	4	0.1	
4	33402-292-003	SOCKET COMP., right winker	-	-	1	0.2	
5	33407-284-000	HOLDER, winker socket	-	-	4	0.2	
6	33408-284-000	CUSHION, winker rubber	-	-	4	0.2	
7	33443-268-671	PACKING, winker lens	-	-	4	0.1	
8	33450-292-670	WINKER ASSY., left (12V 25W)	-	-	1	0.1	
9	33453-292-003	SOCKET COMP., left winker	-	-	1	0.2	
10	33600-300-000	WINKER ASSY., right rear winker (12V 25W)	-	-	1	0.1	
11	33604-323-670	STOPPER, right rear winker	-	-	1	0.1	
12	33605-323-670	STOPPER, left rear winker	-	-	1	0.1	
13	33606-074-010	RUBBER, rear winker mount	-	-	2	0.1	
14	33607-323-670	STAY, rear winker	-	-	2	0.2	
15	33610-300-000	SOCKET COMP., right rear winker (12V 25W)	-	-	1	0.2	
16	33650-300-000	WINKER ASSY., left rear (12V 25W)	-	-	1	0.1	
17	33660-300-000	SOCKET COMP., left rear winker	-	-	1	0.2	
18	34905-268-671	BULB, winker (12V 25W)	-	-	4	0.1	
19	80108-061-000	COLLAR A, rear fender	-	-	2	0.1	
20	90154-268-670	BOLT, light case setting	-	-	2	0.1	
21	93000-06028-02	BOLT, hex., 6×28	-	-	4		
22	93500-05008-0A	SCREW, pan, 5×8	-	-	4		
23	93700-03025-3B	SCREW, oval, 3×25	-	-	8		
24	93700-06025-02	SCREW, oval, 6×25	-	-	2		
25	94001-06000	NUT, hex., 6 mm	-	-	4		
26	94101-06000	WASHER, plain, 6 mm	-	-	4		
27	94101-10000	WASHER, plain, 10 mm	-	-	2		
28	94111-10000	WASHER, spring, 10 mm	-	-	2		

(Used in Germany & Netherlands)



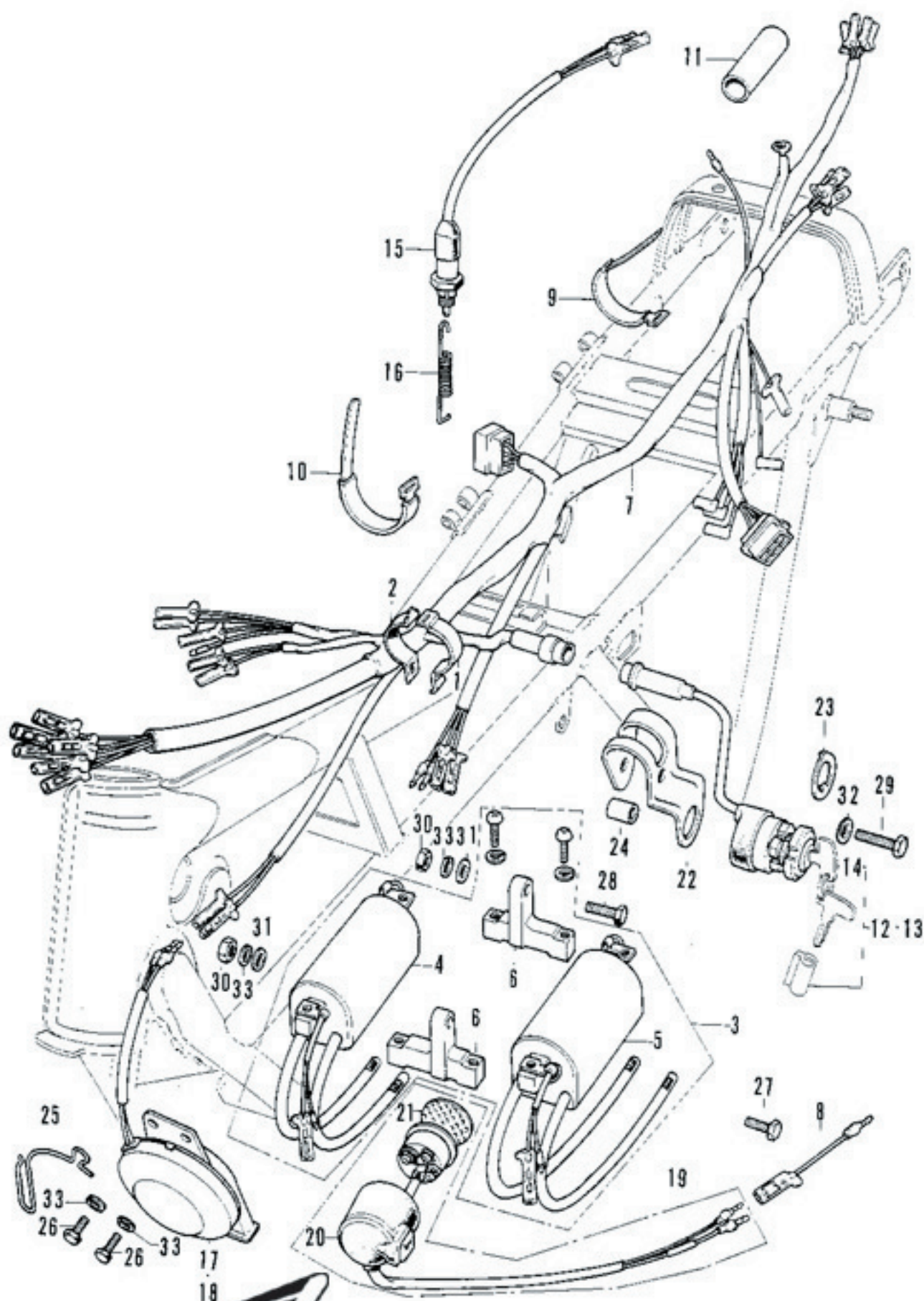
F-30 Winker
(Used in Germany & Netherlands)

Ref. No.	Part No.	Description	Reqd. No.			F.R.T.	Remarks
			68 750	68 750K1	68 750K2		
1	33400-292-611	WINKER ASSY., right front	1	1	1	0.2	
2	33402-268-610	LENS, winker	4	4	4	0.1	
3		BULB, winker (12V 18W)	4	4	4	0.1	
		(To be locally purchased in Germany & Netherlands)					
4	33410-292-610	SOCKET ASSY., right front winker	1	1	1	0.2	
5	33411-285-000	RING	4	4	4		
6	33413-285-000	SPRING, coil	4	4	4		
7	33450-292-611	WINKER ASSY., left front	1	1	1	0.2	
8	33450-292-610	SOCKET ASSY., left front winker	1	1	1	0.2	
9	33600-300-610	WINKER ASSY., right rear	1	1	1	0.2	
10	33605-292-610	BASE, winker	4	4	4	0.3	
11	33610-300-610	SOCKET ASSY., right rear winker	1	1	1		
12	33650-300-610	WINKER ASSY., left rear	1	1	1	0.2	
13	33660-300-610	SOCKET ASSY., left rear winker	1	1	1		
14	33714-300-610	SUB-CORD, right winker light	1	1	1		
15	33715-300-610	SUB-CORD, left winker light	1	1	1		
16	90154-292-610	BOLT, front winker setting	2	2	2	0.2	
○17	90324-300-000	COLLAR, 8 mm	2	2	2	0.1	
○18	90428-816-650	(Superseded by 90428-844 650)					
	90428-844-650	WASHER, 8 mm	2	2	2	0.1	
○19	92000-08025-0B	BOLT, hex., 8×25	2	2	2		
20	93000-06028-02	BOLT, hex., 6×28	4	4	4		
21	93500-03010-0A	SCREW, pan, 3×10	8	8	8		
22	93700-03050-0B	SCREW, oval, 3×50	8	8	8		
23	94001-06020	NUT, hex., 6 mm	4	4	4		
24	94101-06200	WASHER, plain, 6 mm	8	8	8		
25	94101-10200	WASHER, plain, 10 mm	2	2	2		
26	94111-10200	WASHER, spring, 10 mm	2	2	2		



F-31 Wire Harness

Ref. No.	Part No.	Description	Reqd. No.				F.R.T.	Remarks
			750	750K1	750K2	750K3		
1	30151-300-000	BAND A, ignition coil setting	1	1	1		0.2	
2	30152-300-000	BAND B, ignition coil setting	1	1	1		0.2	
3	30600-300-013	COIL ASSY., ignition (TOYO)	1	1	1		0.5	
4	30501-300-013	COIL, right ignition (TOYO)	1	1	1		0.3	
5	30502-300-013	COIL, left ignition (TOYO)	1	1	1		0.4	
6	30511-300-000	BRACKET, ignition coil	2	2	2		0.4	
7	32100-300-040	HARNESS, wire	1	-	-		3.7	~1003479
	32100-300-050	HARNESS, wire	1	1	-			CB750-1003480~
○	32100-341-000	HARNESS, wire	-	-	1			
○ 8	32121-300-750	SUB CORD B, wire harness	-	-	1			
9	32161-268-000	BAND A, wire harness	4	4	-		0.1	
○	95014-61100	BAND A1, wire	-	-	4			
10	32162-283-000	(Superseded by 32162-286-000)						
	32162-286-000	BAND B, wire harness	3	3	-		0.1	
○	95014-62200	BAND B2, wire	-	-	3			
11	33720-300-000	GROMMET, wire cord	-	1	1		0.1	CB750-1054538~
12	35010-300-003	(Superseded by 35010-313-003)						
	35010-313-003	SWITCH-KID, combination (TOYO)	1	1	-		0.3	
○	35010-341-670	KEY-SET (Not used in Germany & E.D.)...	-	-	1			
○13	35010-341-611	KEY-SET (Used in Germany & E.D.)	-	-	1			
14	35100-300-003	(Superseded by 35100-313-003)						
	35100-313-003	SWITCH ASSY., combination (TOYO)	1	1	1		0.2	
15	35350-292-003	SWITCH ASSY., stop (TOYO)	1	1	-		0.2	
○	35350-336-000	SWITCH ASSY., stop lamp	-	-	1			



F-31 Wire Harness

Ref. No.	Part No.	Description	Reqd. No.			F.R.T.	Remarks
			CB 750	CB 750K1	CB 750K2		
16	35357-300-000	SPRING, stop switch.....	1	1	1	0.1	
17	38100-300-013	HORN ASSY. (MITSUBA)..... (Not used in France)	1	-	-	0.3	~1003850
	38100-300-023	HORN ASSY. (MITSUBA)..... (Not used in France)	1	1	1		CB750-1003951~
18	38100-300-620	HORN ASSY. (Used in France)	1	-	-	0.3	CB750-1003480~1003950
	38100-300-621	HORN ASSY. (Used in France)	1	1	1		CB750-1003951~
○19	38400-341-671	BUZZER ASSY., winker (Used in U.S.A.)...	-	-	1		
○20	38402-341-671	COVER, buzzer (Used in U.S.A.).....	-	-	1		
○21	38403-341-672	PLATE, winker buzzer (Used in U.S.A.) ...	-	-	1		
22	50375-300-000B	BRACKET, combination switch (Black)	1	1	1	0.3	
23	50376-300-000	WASHER, combination switch	1	1	1	0.1	
24	50377-300-000	COLLAR combination switch bracket	1	1	1	0.3	
25	50462-300-000	CLAMP, tachometer cable	1	1	1	0.1	CB750-1003951~
26	92000-06016	BOLT, hex., 6×16	2	2	2		
27	92000-06025	BOLT, hex., 6×25	2	2	1		
○28	92000-06032	BOLT, hex., 6×32	1	1	1		
29	92000-08040-0A	BOLT, hex., 8×40	1	1	1		
30	94001-06000	NUT, hex., 6 mm	2	2	2		
31	94101-06000	WASHER, plain, 6 mm	2	2	2		
32	94101-08000	WASHER, plain, 8 mm	1	1	1		
33	94111-06000	WASHER, spring, 6 mm	4	4	4		

