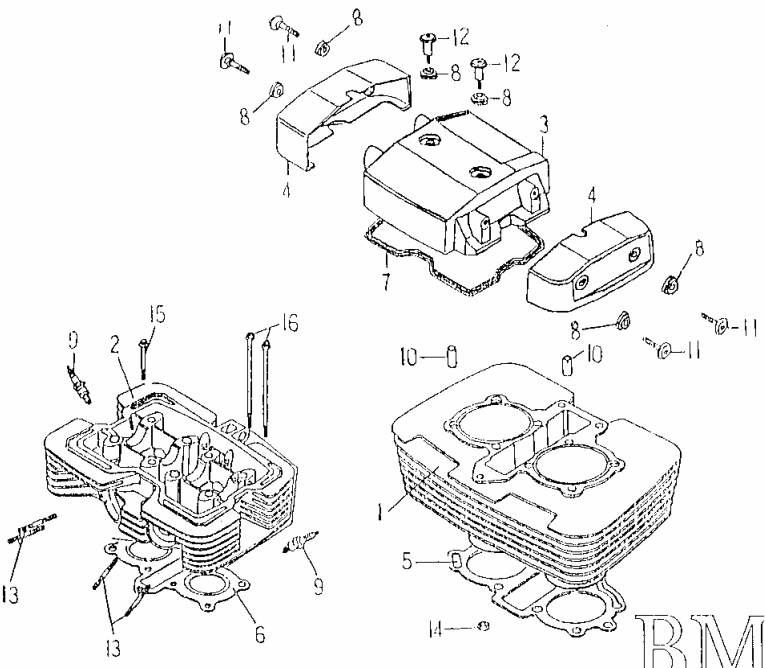


BAROSSA MOTOR INDUSTRY CO., LTD.

C O N T E N T

SPARE PARTS LIST FOR AAM250E & ATG250E

FIG 01	CYLINDER, CYLINDER HEAD	FIG 21-1	FRONT FENDER FOR AAM
FIG 02	CRANKSHAFT PISTON	FIG 21-2	FRONT FENDER FOR ATG
FIG 03	OIL PUMP	FIG 22	SIDE COVER
FIG 04	CARBURETOR	FIG 23	SEAT
FIG 05	VALVE	FIG 24	FRONT WHEEL
FIG 06	CAM CHAIN TENSIONER	FIG 25	REAR WHEEL
FIG 07	CRANKCASE	FIG 26	REAR BRAKE
FIG 08	LEFT CRANKCASE COVER	FIG 27	INTERGRATED
FIG 09	RIGHT CRANKCASE COVER	FIG 28	STEERING HANDEL CABLE
FIG 10	TRANSMISSION STARTER	FIG 29	HANDLE SWITCH
FIG 11	STARTING MOTOR	FIG 30	STAND FOOTREST
FIG 12	GEAR SHIFT	FIG 31-1	GUARD
FIG 13	CLUTCH	FIG 31-2	GUARD (FOR OIL COOLER)
FIG 14	EXHAUST MUFFLER	FIG 32	HEAD LIGHT
FIG 15	REAR ARM	FIG 33	TAIL LIGHT
FIG 16	REAR SUSPENSION	FIG 34	WIRE HARNESS
FIG 17	FRAME	FIG 35	SPEEDOMETER
FIG 18	FRONT SUSPENSION	FIG 36	WARNING
FIG 19	STEERING	FIG 37	CARRIER REAR
FIG 20	FUEL TANK	FIG 38	GEAR,SPEEDOMETER
		FIG 39	OIL COOLING SET
		FIG 40	SPARE PARTS LIST

	NO	PARTS NO.	PARTS NAME	QTY
 <p data-bbox="168 901 571 933">FIG.01 CYLINDER,CYLINDER HEAD 汽缸汽缸頭</p> <p data-bbox="840 821 1030 933">BMI MODEL:LAAM-250E</p>	1	11111-CBT-00	CYLINDER COMP	1
	2	11121-CBT-00	HEAD COMP, CYLINDER	1
	3	11141-CBT-00	COVER, CYLINDER HEAD	1
	4	11144-CBT-00	AIR SEAL HEAD SIDE COVER	2
	5	11151-CBT-00	GASKET, CYLINDER	1
	6	11181-CBT-00	GASKET, CYLINDER HEAD	1
	7	11191-CBT-00	GASKET, HEAD COVER	1
	8	11196-CBT-00	RING SEAD HEAD COVER	6
	9	62210-GAT-00	PLUG, SPEAK (CR7HS NGK)	2
	10	94410-10016	PIN, DOWEL 10*16	2
	11	94706-06032-R	LINKED SCREW, AIR SEAL HEAD COVER	4
	12	94706-06040-R	AIR SEAL HAED COVER	2
	13	94717-08042-C	BOLT, STUD 8*42	4
	14	95201-061005-B	NUT, HEXAGON	1
	15	96414-06065-R	BOLT, FLANGE 6*65	1
	16	96414-06145-B	BOLT, FLANGE 6*145	2

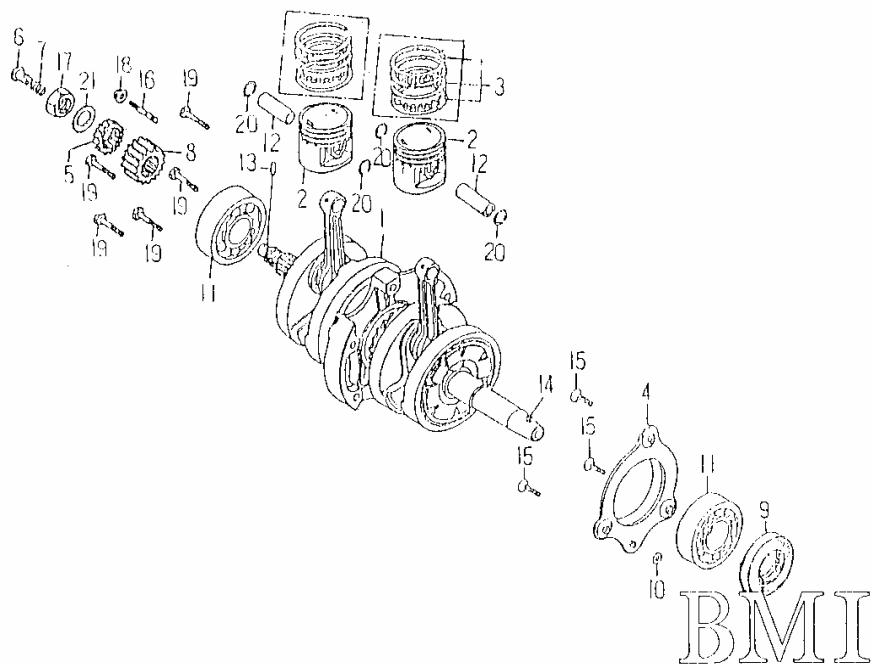
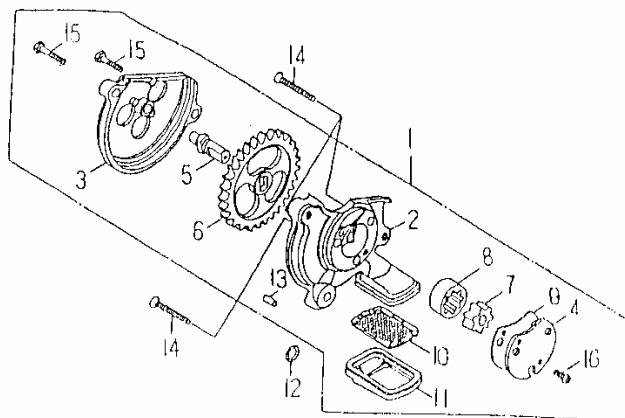


FIG.02 CRANKSHAFT.PISTON 曲軸.活塞

BMI
MODEL AAM-250E

NO	PARTS NO.	PARTS NAME	QTY
1	11400-CBT-00	CRANKSHAFT COMP	1
2	11631-CBT-00	PISTON	2
3	11636-CBT-00	RING SET, PISTON	2
4	13136-CBT-00	OIL PLATE, BREATHER	1
5	13178-CBT-00	OIL PUMP DRIVING WHEEL 20T	1
6	13321-CBT-00	THROUGH OIL	1
7	13324-CBT-00	SPRING, OIL THROUGH	1
8	25641-CBT-00	GEAR, PRIMARY DRIVE 19T	1
9	93110-35527	OIL SEAL TC 35*52*7	1
10	93210-30060	O-RING 3*6	1
11	93320-256217	BEARING, RADIAL BALL 6305	2
12	93510-101541	PIN, PISTON	2
13	94510-20014	PIN, DOWEL 2*13.8	1
14	94510-40004	PIN, DOWEL 4*3.7	1
15	94712-06016-B	SCREW, PAN HEAD 6*16	3
16	94717-06033-K	BOLT, ALIEN DIAMETER M7/M6*33	1
17	95201-162210-C	NUT, HEXAGON	1
18	95401-061006-C	NUT, FLANGE	1
19	96416-08032-K	BOLT, FLANGE 8*32	5
20	97050-10017	CIRCLIP, PISTON PIN	4
21	97310-162420-K	WASHER, CONICAL SPRING 16*23.9*	1



BMI
MODEL:AAM-250E

FIG.03 OIL PUMP 機油泵

NO	PARTS NO.	PARTS NAME	QTY
1	13100-CBT-00	PUMP ASS'Y, OIL	1
2	13111-CBT-00	BODY, OIL PUMP	1
3	13112-CBT-00	COVER, OIL PUMP GEAR	1
4	13116-CBT-00	PLATE, OIL PUMP	1
5	13121-CBT-00	SHAFT, OIL PUMP	1
6	13124-CBT-00	GEAR, OIL PUMP	1
7	13141-CBT-00	ROTOR, OIL PUMP INNER	1
8	13142-CBT-00	ROTOR, OIL PUMP OUTER	1
9	13151-CBT-00	GASKET, OIL PUMP	1
10	13310-CBT-00	ROTOR, OIL FILTER	1
11	13311-CBT-00	CAP, OIL FILTER ROTOR	1
12	93210-30060	O-RING 3*6	1
13	94510-40007	PIN, DOWEL 4*6.5	1
14	94712-06032-B	SCREW, FLAT HEAD 6*32	3
15	96210-05020-C	BOLT, HEXAGON 5*20	2
16	96318-05010-C	SCREW, PAN HEAD 5*10	1

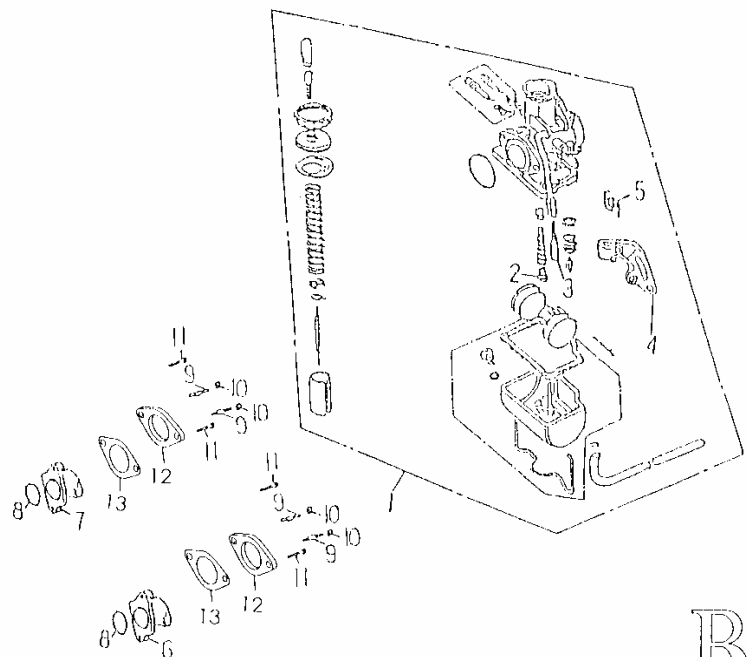


FIG.04 CARBURETOR 化油器

BMI
MODEL:AAM-250E

NO	PARTS NO.	PARTS NAME	QTY
1	13201-RAM-01	CARBURETOR ASS'Y	2
2	13240-RAM-01	JET, MAIN #102	2
3	13242-RAM-00	JET, SLOW #35	2
4	13276-RAM-00	HOLDER, CHOKE CABLE	2
5	13278-RAM-00	SPRING, TORSION	2
6	13555-CBT-00	INSULATOR, CARB COMP L	1
7	13565-CBT-00	INSULATOR, CARB COMP R	1
8	93210-24262	O-RING 2.4*26.2	2
9	94717-06028-B	BOLT, STUD 6*28	4
10	95401-061006-B	NUT, FLANGE	4
11	96310-06020-B	SCREW, PAN HEAD 6*20	4
12	13620-CBT-00	INSULATOR CARBURETOR	2
13	13621-CBT-00	CARB, INSULATOR GASKET	2

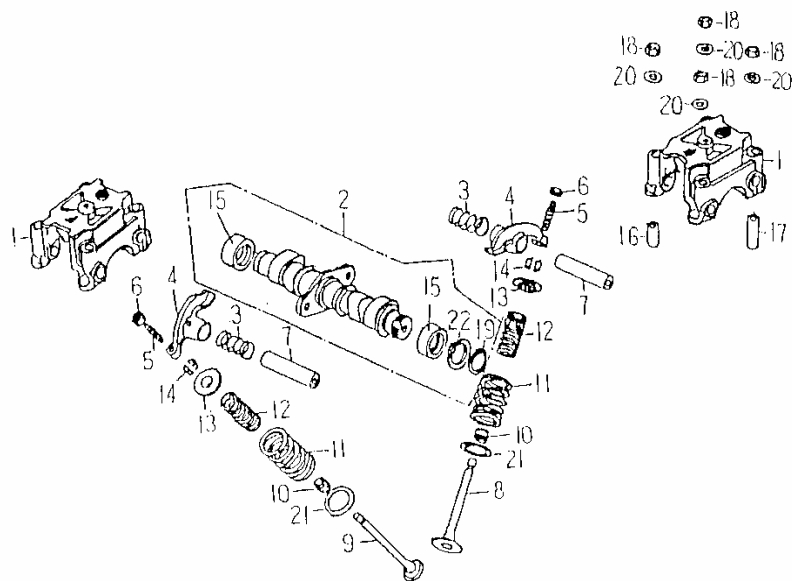


FIG.05 VALVE 閥門

BMI
MODEL:AAM-250E

NO	PARTS NO.	PARTS NAME	QTY
1	11131-CBT-00	HOLDER, CAMSHAFT	2
2	14110-CBT-00	CAMSHAFT COMP	1
3	14150-CBT-00	SETTING SPRING, ROCKER ARM	2
4	14431-CBT-00	ARM, VALVE ROCKER	4
5	14436-CBT-00	SCREW, TAPPET ADJUSTING	4
6	14437-CBT-00	NUT, TAPPET ADJUSTING	4
7	14450-CBT-00	ROCKER ARM	2
8	14711-CBT-00	VALVE, IN	2
9	14721-CBT-00	VALVE, EX	2
10	14731-CBT-00	SEAL, VALVE STEM	4
11	14751-CBT-00	SEAL, VALVE OUTER	2
12	14761-CBT-00	SEAL, VALVE INNER	2
13	14771-CBT-00	RETAINER, VALVE SPRING	2
14	14781-CBT-00	COTTER, VALVE	4
15	93510-202813	SHEATH, CAMSHAFT	2
16	94410-10016	PIN, DOWEL 10*16	2
17	94410-10028	PIN, DOWEL 10*28	2
18	95201-081307-B	BOLT, HEXAGON	8
19	97010-20010-K	CIRCLIP 20 MM	1
20	97201-081822-B	WASHER, COPPER 8*5*18*2.2	8
21	97201-182610	SEAT, VALVE SPRING OUTER	4
22	97201-202719	WASHER, CAMSHAFT	1

[MENU PAGE](#)

[PAGE UP](#) ▲

[PAGE DOWN](#) ▼

[ALL PARTS LIST](#)

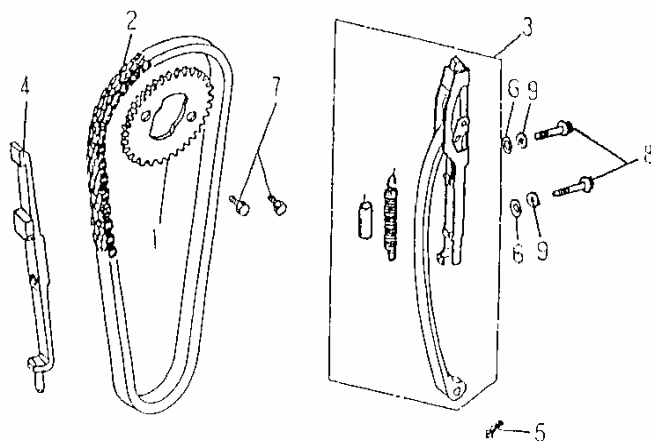


FIG.06 CAM CHAIN.TENSIONER 內鏈條.拉力桿

BMI
MODEL:AAM-250E

NO	PARTS NO.	PARTS NAME	QTY
1	14111-CBT-00	SPROCKET, CAMSHAFT	1
2	14501-CBT-00	CHAIN, CAM	1
3	14510-CBT-00	TENSIONER, CAM CHAIN	1
4	14560-CBT-00	GUIDE COMP, CAM CHAIN	1
5	90230-12008	COTTER PIN	1
6	93210-19058	O-RING 1.9*5.8	2
7	94706-07014-K	BOLT, HEXAGON 7*14	2
8	96414-06025-B	BOLT, FLANGE 6*25	2
9	97230-061312	WASHER, COPPER 6.2*13*1.2	2

[MENU PAGE](#)

[PAGE UP ▲](#)

[PAGE DOWN ▼](#)

[ALL PARTS LIST](#)

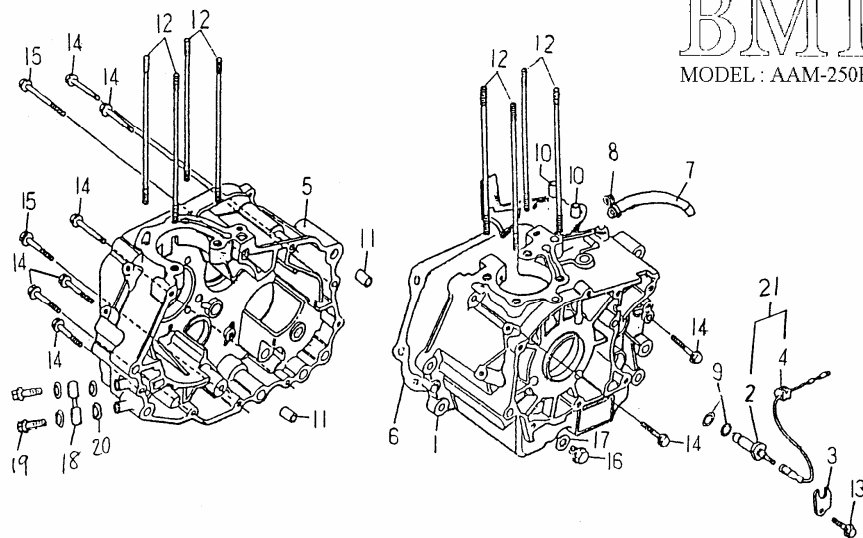


FIG.07 CRANKCASE 曲軸箱

NO	PARTS NO.	PARTS NAME	Q'TY
1	15111-CBT-00	CRANKCASE, LEFT	1
2	15127-CBT-00	CONTACT, NEUTRAL SWITCH	1
3	15128-CBT-00	CLAMPER, WIRE HARNESS	1
4	15129-CBT-00	CONTACT ASS'Y, NEUTRAL SWITCH	1
5	15211-CBT-00	CRANKCASE, RIGHT	1
6	15251-CBT-00	GASKET, CRANKCASE	1
7	15276-CBT-00	HOSE	1
8	90210-15016-B	CLIP	1
9	93210-16070	O-RING 1.6*7	2
10	94410-08014	PIN, DOWEL 8*14	2
11	94410-12020	PIN, DOWEL 12*20	2
12	94717-08215-B	BOLT, STUD 8*215	8
13	96411-06012-C	BOLT, FLANGE 6*12	1
14	96411-06040-R	BOLT, FLANGE 6*40	8
15	96414-06065-B	BOLT, FLANGE 6*65	2
16	96414-12015-B	BOLT, FLANGE 12*15	1
17	97231-122118	WASHER, ALUMINUM 12.5*20.6*1.8	1
18	61920-CBT-00	CONNECTOR,OIL COOLING HOLE	1
19	94716-12032-G	BOLT,UNION M12*32L	2
20	97231-122020	WASHER,ALUMINUM 12.3*20*2.0	4
21	15126-CBT-00	ASS'Y CONTACT, NEUTRAL SWITCH	1

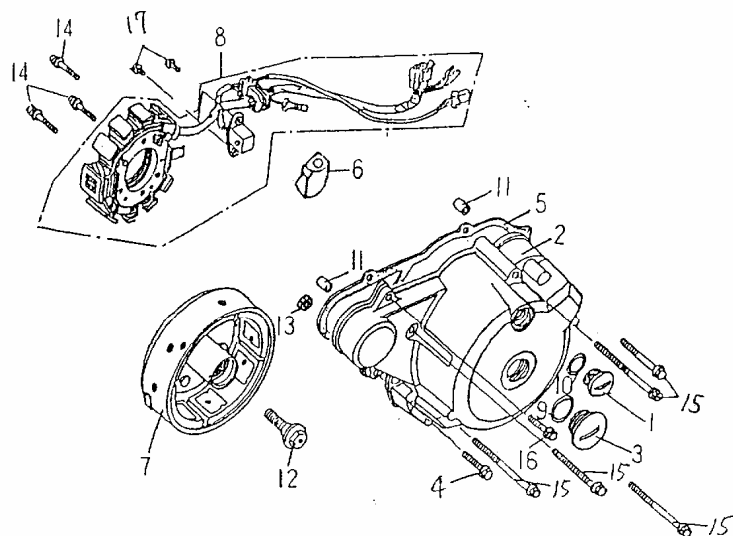


FIG.08 LEFT CRANKCASE COVER 左曲軸箱蓋

BMI
MODEL : AAM-250E

NO	PARTS NO.	PARTS NAME	QTY
1	12655-CBT-00	CAP, A.C.G	1
2	15411-CBT-00	COVER, L CRANKCASE	1
3	15417-CBT-00	CAP, L CRANKCASE COVER	1
4	96414-06050-R	BOLT,FLANGE 6*50	1
5	15481-CBT-00	GASKET, L CRANKCASE COVER	1
6	15541-CBT-00	ENGINE OUTPUT WIRE JACKET	1
7	35550-CBT-00	FLYWHEEL COMP	1
8	35560-CBT-00	STATOR COMP	1
9	93210-24274	O-RING 2.4*27.4	1
10	93210-25138	O-RING 2.5*13.8	1
11	94410-08016	PIN, DOWEL 8*16	2
12	94716-10033-B	BOLT, CRANKSHAFT	1
13	95401-061006-B	NUT, FLANGE	1
14	96312-05028-B	SCREW, PAN HEAD WITH WASHER	3
15	96411-06065-R	BOLT, FLANGE 6*65	1
16	96411-06020-R	BOLT, FLANGE 6*20	1
17	96510-06020-B	BOLT, FLANGE 6*20	1

[MENU PAGE](#)

[PAGE UP](#)



[PAGE DOWN](#)



[ALL PARTS LIST](#)

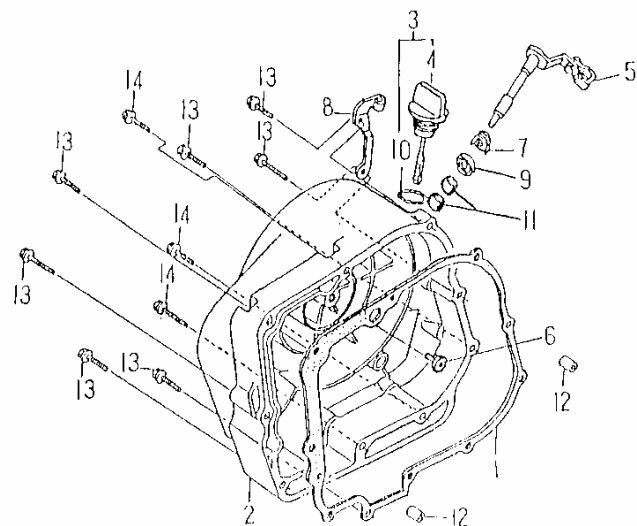


FIG.09 RIGHT CRANKCASE COVER 右曲軸箱蓋

BMII
MODEL LAAM-250E

NO	PARTS NO.	PARTS NAME	QTY
1	15221-CBT-00	GASKET, R CRANKCASE COVER	1
2	15511-CBT-00	COVER, R CRANKCASE COMP	1
3	15561-CBT-00	GAUGE ASS'Y, OIL LEVEL	1
4	15563-CBT-00	GAUGE, OIL LEVEL	1
5	25723-CBT-00	LEVER, CLUTCH	1
6	25732-CBT-00	PUSHING PLATE	1
7	25753-CBT-00	SPRING CLUTCH LEVER	1
8	25793-CBT-00	HOLDER, CLUTCH WIRE	1
9	93110-12185	OIL SEAL KC 12*18*5	1
10	93210-35178	O-RING 3.5*17.8	1
11	93310-1216100	BEARING, NEEDLE (HK-121610)	2
12	94410-08014	PIN, DOWEL 8*14	2
13	96411-06040-B	BOLT, FLANGE 6*40	7
14	96411-06050-B	BOLT, FLANGE 6*50	3

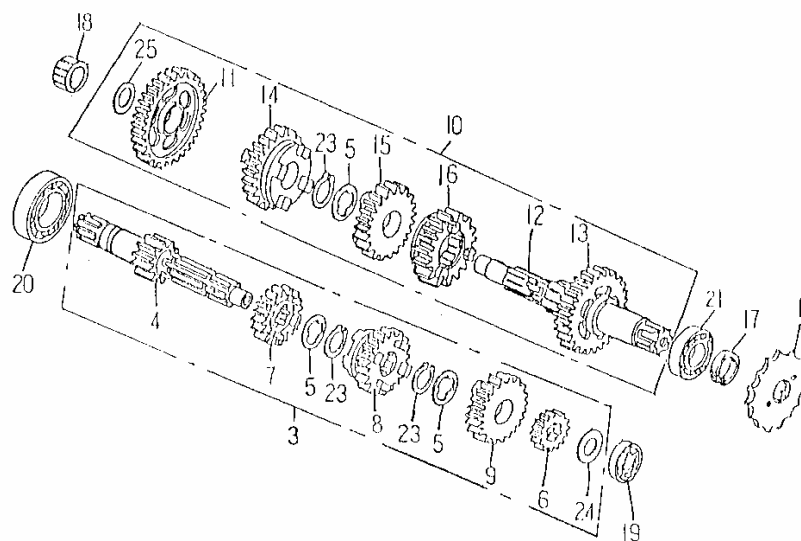


FIG.10 TRANSMISSION.STARTER 傳動系統

BMI
MODEL : AAM-250E

NO	PARTS NO.	PARTS NAME	QTY
1	25711-CBT-00	SPROCKET DRIVE 14T	1
3	26100-CBT-00	MAIN SHAFT ASS'Y	1
4	26111-CBT-00	MAIN SHAFT, TRANSMISSION 13T	1
5	26118-CBT-00	WASHER, SPLINE	3
6	26120-CBT-00	GEAR, MAIN SHAFT SECOND 18T	1
7	26130-CBT-00	GEAR, MAIN SHAFT THIRD 21T	1
8	26140-CBT-00	GEAR, MAIN SHAFT FOURTH 24T	1
9	26150-CBT-00	GEAR, MAIN SHAFT FIFTH 23T	1
10	26400-CBT-00	COUNTER SHAFT ASS'Y	1
11	26410-CBT-00	GEAR, COUNTER SHAFT LOW 37T	1
12	26411-CBT-00	COUNTER SHAFT, TRANSMISSION	1
13	26420-CBT-00	GEAR, COUNTER SHAFT SECOND 32T	1
14	26430-CBT-00	GEAR, COUNTER SHAFT THIRD 28T	1
15	26440-CBT-00	GEAR, COUNTER SHAFT FOURTH 26T	1
16	26450-CBT-00	GEAR, COUNTER SHAFT FIFTH 21T	1
17	93110-22347	OIL SEAL TC 22*34*7	1
18	93310-1521120	BEARING, NEEDLE(NK-15/12)	1
19	93310-205215	BEARING, NEEDLE 6304	1
20	93320-153511Z	BEARING, RADIAL BALL 6202Z	1
21	93320-224714B	BEARING, RADIAL 22*47*14-RS	1
23	97014-20012-K	CIRCLIP 20MM	3
24	97201-152510-K	WASHER, THRUST 15.4*24.8*1	1
25	97201-153317	WASHER, THRUST 15.2*32.8*1.7	1

BMI

MODEL : AAM-250E

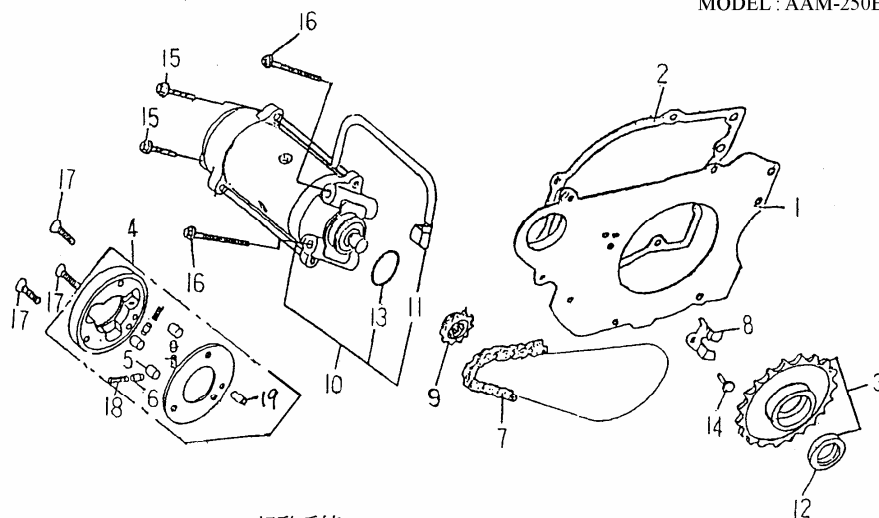


FIG.11 STARTING MOTOR 起動系統

NO	PARTS NO.	PARTS NAME	QTY
1	15431-CBT-00	CLAPBOARD	1
2	15483-CBT-00	CLAPBOARD GASKET	1
3	23524-CBT-00	GEAR COMP, STARTING CLUTCH 38T	1
4	23570-CBT-00	STARTING CLUTCH ASS'Y	1
5	23576-CBT-00	ROLLER 10*9.5	3
6	23578-CBT-00	CAP, STARTING CLUTCH ROLER SPRING	3
7	23612-CBT-00	MOTOR DRIVE CHAIN	1
8	23632-CBT-00	PALTE, SET GEAR	1
9	23660-CBT-00	MOTOR SPROCKET WHEEL 13T	1
10	35800-CBT-00	MOTOR ASS'Y, STARTER	1
11	35831-CBT-00	CABLE, STARTER MOTOR	1
12	93110-22315	OIL SEAL SC 22*31*5	1
13	93210-18335	O-RING 1.8*33.5	1
14	96411-06012-C	BOLT, FLANGE 6*12	1
15	96411-06025-R	BOLT, FLANGE 6*25	2
16	96411-06065-R	BOLT, FLANGE 6*65	2
17	96510-06016-C	BOLT, FLANGE 6*16	3
18	97501-03029	SPRING, STARTING CLUTCH ROLLER	3
19	94510-60014	PIN,DOWEL 6*14	1

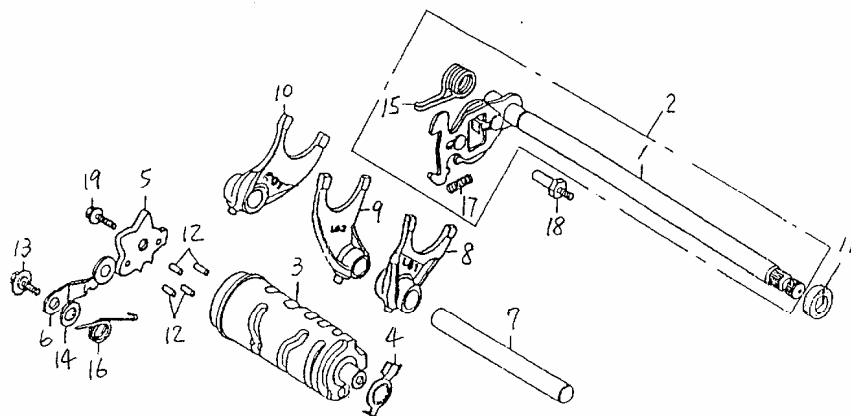


FIG.12 GEAR SHIFT 變速機構

BMI
MODEL : AAM-250E

NO	PARTS NO.	PARTS NAME	QTY
1	24201-CBT-00	SPINDLE, GEAR SHIFT	1
2	24210-CBT-00	SPINDLE COMP, GEAR SHIFT	1
3	24220-CBT-00	DRUM, GEAR SHIFT	1
4	24223-CBT-00	POTOR, NEUTRAL SWITCH	1
5	24226-CBT-00	CAM, GEAR SHIFT	1
6	24228-CBT-00	STOPPER COMP, GEAR SHIFT	1
7	24236-CBT-00	SHAFT, GEAR SHIFT FORK	1
8	24237-CBT-00	FORK, L GEAR SHIFT	1
9	24238-CBT-00	FORK, CENTER GEAR SHIFT	1
10	24239-CBT-00	FORK, R GEAR SHIFT	1
11	93110-112410	OIL SEAL TC 11.6*24*10	1
12	94510-40013	PIN, DOWEL 4*13	4
13	96411-06020-C	BOLT, FLANGE 6*20	1
14	97201-061612-K	WASHER, THRUST 6.4*15.8*1.2	2
15	97501-05020	SPRING, GEAR SHIFT RETURN	1
16	97508-23153	SPRING, SHAFT DRUM STOPP	1
17	97510-32179	SPRING, GEAR SHIFT PLATE	1
18	24216-CBT-00	TIP POLE	1
19	94710-06014-K	SCREW	1

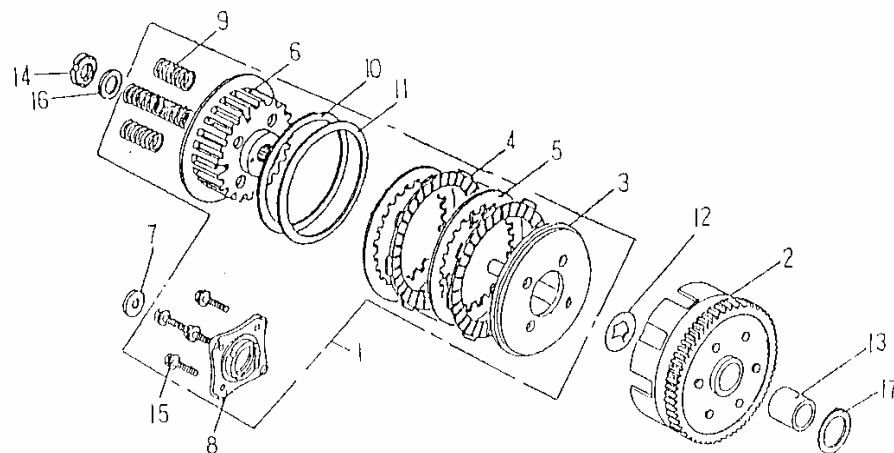


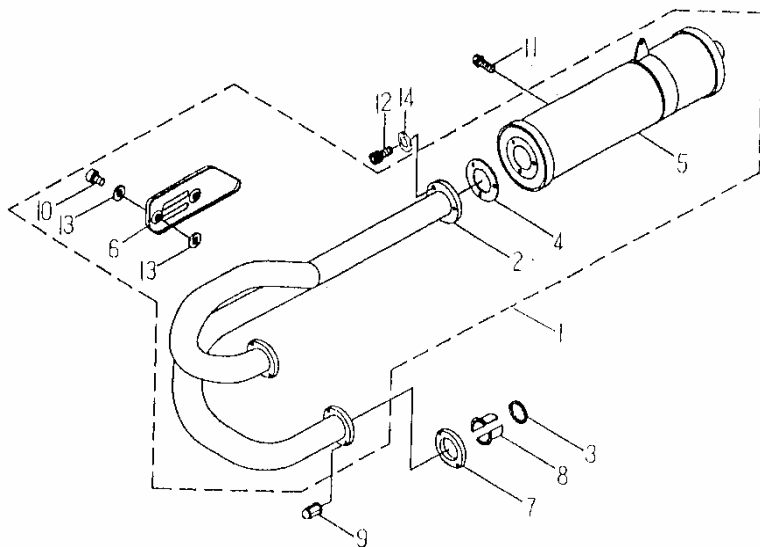
FIG.13 CLUTCH 離合器

BMI
MODEL AAM-250E

NO	PARTS NO.	PARTS NAME	QTY
1	25602-CBT-00	CLUTCH COMP	1
2	25611-CBT-00	OUTER COMP, CLUTCH	1
3	25621-CBT-00	PLATE, CLUTCH PRESSURE	1
4	25622-CHP-00	DISK, CLUTCH FRICITION	6
5	25623-CBT-00	PLATE, CLUTCH PRESSURE	6
6	25661-CBT-00	CENTER, CLUTCH	1
7	25666-CBT-00	BEARING, NEEDLE	1
8	25670-CBT-00	PLATE, CLUTCH LIFTER	1
9	25680-CBT-00	SPRING, CLUTCH	4
10	25684-CBT-00	GASKET	1
11	25686-CBT-00	WASHER	1
12	25688-CHP-00	WASHER, SPLINE	1
13	93510-202618	BEARING, SHEATH	1
14	95601-162808-K	NUT, RING	1
15	96414-06022-B	BOLT, FLANGE 6*22	4
16	97310-162720	WASHER, THRUST 16.5*26.4*2	1
17	97201-203520	WASHER, THRUST 20.2*35*2	1



NO	PARTS NO.	PARTS NAME	Q'TY
1	31610-CBT-01	EXHAUST MUFFLER ASS'Y	1
2	31611-CBT-00	PIPE,EXHAUST	1
3	31613-CHP-00	GASKET,EXHAUST PIPE 31.5*39.5*3.5	2
4	31614-RAM-00	GASKET,MUFFLER	1
5	31617-CBT-01	MUFFLER COMP	1
6	31618-CBT-00	PROTECTOR,EXHAUST	1
7	31621-CBT-00	JOINT,EXHAUST PIPE	2
8	31623-CBT-00	COLLAR,EXHAUST PIPE JOINT	4
9	95401-081208-B	NUT,FLANGE	4
10	96316-06010-K	.SCREW,PAN HEAD	2
11	96414-08016-B	BOLT,FLANGE	1
12	96510-06020-K	BOLT,SOCKET	3
13	97210-061215	WASHER,PLATE	4
14	97301-061115-K	WASHER,SPRING 6.5*11*1.5	3



NO	PARTS NO.	PARTS NAME	QTY
1	31610-CBT-01	EXHAUST MUFFLER ASS'Y	1
2	31611-CBT-00	PIPE,EXHAUST	1
3	31613-CHP-00	GASKET,EXHAUST PIPE 31.5*39.5*3.5	2
4	31614-RAM-00	GASKET,MUFFLER	1
5	31617-CBT-01	MUFFLER COMP	1
6	31618-CBT-00	PROTECTOR,EXHAUST	1
7	31621-CBT-00	JOINT,EXHAUST PIPE	2
8	31623-CBT-00	COLLAR,EXHAUST PIPE JOINT	4
9	95401-081208-B	NUT,FLANGE	4
10	96316-06010-K	.SCREW,PAN HEAD	2
11	96414-08016-B	BOLT,FLANGE	1
12	96510-06020-K	BOLT,SOCKET	3
13	97210-061215	WASHER,PLATE	4
14	97301-061115-K	WASHER,SPRING 6.5*11*1.5	3

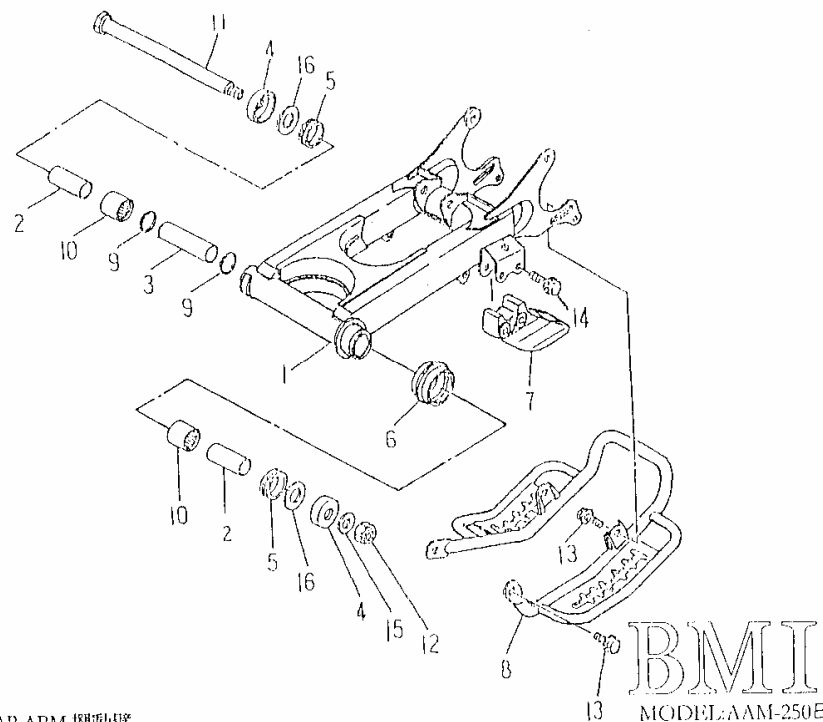


FIG.15 REAR ARM 擺動臂

NO	PARTS NO.	PARTS NAME	QTY
1	32100-RAM-00	REAR ARM	1
2	32115-RAM-00	BUSH	2
3	32116-RAM-00	SPACER	1
4	32118-RAM-00	COVER,THRUST	2
5	32119-RAM-00	OIL SEAL	2
6	32160-RAM-00	SEAL,GUARD	1
7	32165-RAM-00	SUPPORT,CHAIN	1
8	32190-RAM-00	COVER	1
9	93210-25200	O-RING 2.5*20	2
10	93310-222820	BEARING,NEEDLE ROLLER HK-2220	2
11	94610-15258-B	SHAFT,PIVOT	1
12	95301-142212-B	NUT,LOCK 14MM	1
13	96414-08012-B	BOLT,FLANGE	4
14	96414-08040-B	BOLT,FLANGE	2
15	97201-142820-B	WASHER,PLATE 14.2*28.4*2.0	1
16	97201-243820	WASHER,PLATE	2

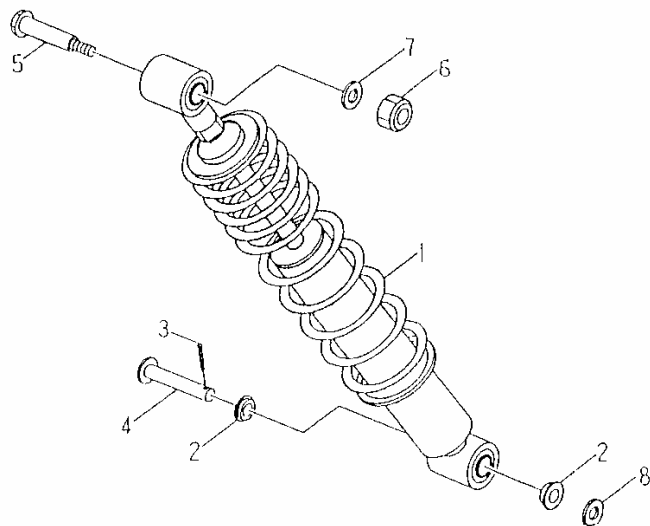


FIG.16 REAR SUSPENSION 後懸吊系統

BMI
MODEL: AAM-250E

NO	PARTS NO.	PARTS NAME	QTY
1	32210-CBT-02	SHOCK ABSORBER ASS'Y,REAR	1
2	32231-RAM-00	COVER,THRUST	2
3	90240-29025-B	PIN.COTTER 2.9*25	1
4	94610-12070-B	PIN,CLEVIS	1
5	94710-10066-B	BOLT	1
6	95311-101710-B	NUT,NYLON	1
7	97201-102220-B	WASHER.PLATE 10.5*22*2	1
8	97201-122223-B	WASHER,PLATE 12.5*22*2.3	1

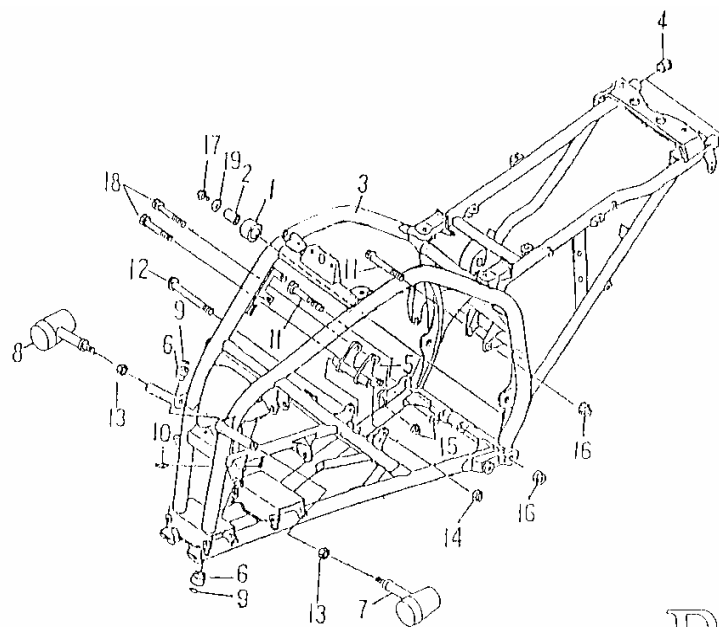


FIG.17 FRAME 車架

BMI
MODEL AAM-250E

NO	PARTS NO.	PARTS NAME	QTY
1	32167-RAM-00	TENSIONER	2
2	32168-RAM-00	BUSH	2
3	41110-QUA-00	CADRE QUARTERBACK	1
	41110-CBT-03	CADRE SILVERHAWK	1
4	41154-RAM-00	PLUG,SPECIAL SHAPE	2
5	41181-CBT-00	ENGINE HANGER F	1
6	46412-RAM-00	BUSH,SOLID	2
7	55350-RAM-00	CLIGNOTANT AV G SILVERHAWK	1
8	55360-RAM-00	CLIGNOTANT AV D SILVERHAWK	1
9	93210-24148	O-RING 2.4*14.8	2
10	94340-06010-B	NIPPLE,GREASE M6*P1.0	1
11	94610-10113-B	BOLT,FLANGE	2
12	94610-12125-B	BOLT,FLANGE	1
13	95201-101408-B	NUT,HEXAGON	2
14	95311-121912-B	NUT,NYLON	1
15	95401-081208-B	NUT,FLANGE	2
16	95401-101409-B	NUT,FLANGE	2
17	96414-08012-B	BOLT,FLANGE	2
18	96414-10070-B	BOLT,FLANGE	2
19	97201-082420-B	WASHER,PLATE 8.7*24*2.0	2

[MENU PAGE](#)

[PAGE UP](#)



[PAGE DOWN](#)



[ALL PARTS LIST](#)

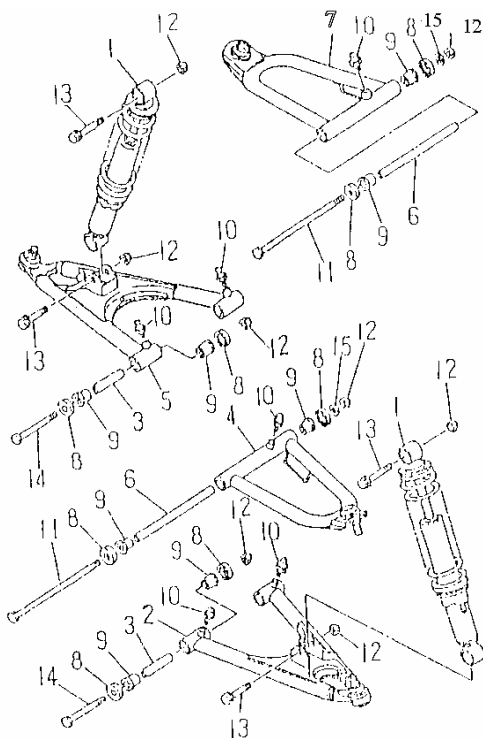


FIG.18 FRONT SUSPENSION 前懸吊系統

BMI
MODEL:AAM-250E

NO	PARTS NO.	PARTS NAME	QTY
1	42126-RAM-00	SHOCK ABSORBER ASS'Y	2
2	42161-RAM-00	FRT.LWR,ARM LEFT	1
3	42163-RAM-00	COLLAR	4
4	42166-RAM-00	FRT.UPPER,ARM LEFT	1
5	42171-RAM-00	FRT.LWR,ARM RIGHT	1
6	42173-RAM-00	COLLAR	2
7	42176-RAM-00	FRT.UPPER,ARM RIGHT	1
8	42183-RAM-00	COVER,THRUST	12
9	93330-152118	BUSH,SOLID	12
10	94340-06010-B	NIPPLE,GREASE M6*P1.0	6
11	94610-10208-B	SHAFT,PIVOT	2
12	95311-101710-B	NUT,NYLON	10
13	96414-10055-B	BOLT,FLANGE	4
14	96414-10080-B	BOLT,FLANGE	4
15	97201-102020-B	WASHER,PLATE 10.5*20*2	6

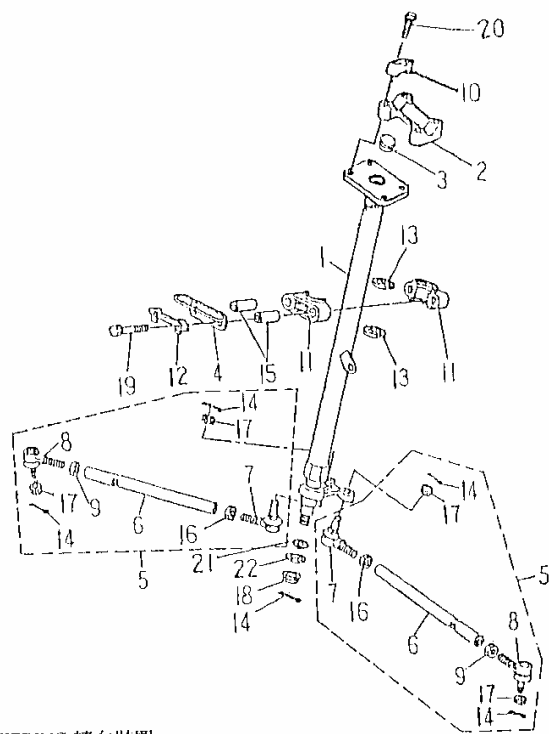


FIG.19 STEERING 轉向裝置

BMI
MODEL: AAM-250 E

NO	PARTS NO.	PARTS NAME	QTY
1	42101-RAM-02	COLUMN,STEERING	1
2	42106-SK9-00	BRIDGE, TOP	1
3	42111-RAM-00	PLUG, TAPER	1
4	42118-RAM-00	BRACKER, STRG LOWER	1
5	42140-RAM-00	ROD, TIE ASS'Y	2
6	42141-RAM-00	ROD, TIE	2
7	42142-RAM-00	JOINT, UNIVERSAL 1	2
8	42143-RAM-00	JOINT, UNIVERSAL 2	2
9	42146-RAM-00	NUT	2
10	46125-RAM-00	HOLDER, HANDLE UPR	2
11	46411-RAM-00	BEARING, STEERING	2
12	46416-RAM-00	WASHER, LOCK	1
13	46417-RAM-00	OIL SEAL	2
14	90240-23020-B	PIN, COTTER 2.3*20	5
15	93510-081442-C	COLLAR	2
16	95201-101408-C	NUT, HEXAGON	2
17	95321-101710-C	NUT, CASTLE	4
18	95401-101409-B	NUT, NYLON	1
19	96210-08060-B	BOLT, HEXAGON	2
20	96414-08050-B	BOLT, FLANGE	4
21	97201-102620-B	WASHER, PLATE	1
22	97301-101720-B	WASHER, SPRING	1

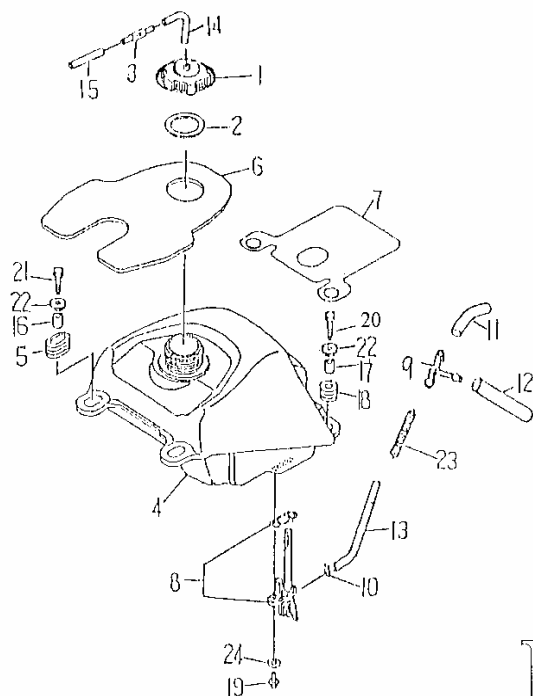
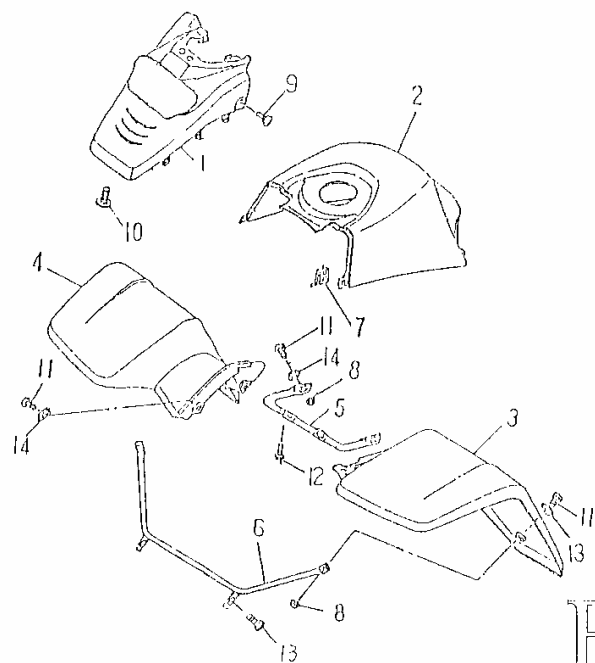


FIG.20 FUEL TANK 油箱

BMII
MODEL AAM-250E

NO	PARTS NO.	PARTS NAME	QTY
1	43102-RAM-00	CAP ASS'Y	1
2	43103-RAM-00	CAP WASHER	1
3	43108-SK5-00	CHECK, VALVE	1
4	43110-CBT-01	FUEL TANK	1
5	43151-RAM-00	GROMMET F	2
6	43153-RAM-00	TRIM, COVER PANEL	1
7	43154-RAM-00	GUARD	1
8	43500-CBT-00	FUEL COCK ASS'Y	1
9	43535-CBT-00	JOINT THREE WAY	1
10	90210-12010	CLIP	3
11	90310-50060	HOSE, FUEL	1
12	90310-50135	HOSE, FUEL	1
13	90310-50140	HOSE, FUEL	1
14	90310-50050	HOSE 5*8*50	1
15	90310-50390	HOSE 5*8*390	2
16	93510-061015-B	COLLAR F	2
17	93510-061021-B	COLLAR R	2
18	93580-102416	GROMMET R	2
19	96318-06012-B	SCREW, PAN HEAD	2
20	96414-06025-B	BOLT, FLANGE	2
21	96414-06032-B	BOLT, FLANGE	2
22	97201-062220-B	WASHER, PLATE	4
23	97501-08140-B	SPRING, COMPRESSION	1
24	97210-061315	WASHER, PLATE	2

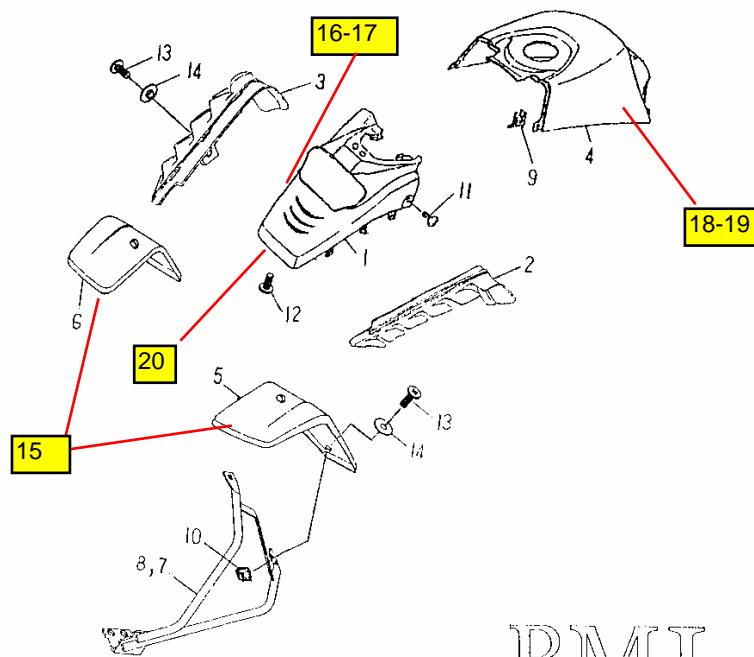


FOR AAM

FIG.21 FRONT FENDER 前土除

BMII
MODEL:AAM-250E

NO	PARTS NO.	PARTS NAME	Q'TY
1	51151-AAM-00	PANEL,FRONT ROUGE	1
	51151-AAM-0003	PANEL,FRONT JAUNE	1
	51151-AAM-0004	PANEL,FRONT BLEU	1
	51151-AAM-0007	PANEL,FRONT NOIR	1
2	51532-RAM-00	COVER,TOP ROUGE	1
	51532-RAM-0003	COVER,TOP JAUNE	1
	51532-RAM-0004	COVER,TOP BLEU	1
	51532-RAM-0007	COVER,TOP NOIR	1
3	51552-RAM-00	FENDER,FRONT L ROUGE	1
	51552-RAM-0003	FENDER,FRONT L JAUNE	1
	51552-RAM-0004	FENDER,FRONT L BLEU	1
	51552-RAM-0007	FENDER,FRONT L NOIR	1
4	51553-RAM-00	FENDER,FRONT R ROUGE	1
	51553-RAM-0003	FENDER,FRONT R JAUNE	1
	51553-RAM-0004	FENDER,FRONT R BLEU	1
	51553-RAM-0007	FENDER,FRONT R NOIR	1
5	51554-RAM-00	STAY,FENDER UPPER	1
6	51556-CBT-00	SYAT,FENDER LOWER	1
7	95101-05012	NUT,SPRING	2
8	95401-061006-B	NUT,FLANGE	4
9	96112-51216-K	SCREW,TAPPING	2
10	96318-06012-B	SCREW,PAN HEAD	1
11	96318-06015-B	SCREW,PAN HEAD	6
12	96414-06012-B	BOLT,FLANGE	2
13	96414-06016-B	BOLT,FLANGE	2
14	97321-061825-B	WASHER,FLANGE	6



FOR ATG

FIG.21 FRONT FENDER 前土除

BMII
MODEL: AAM-250E

NO	PARTS NO.	PARTS NAME	QTY
1	51151-AAM-0007	PANEL,FRONT NOIR	1
2	51162-STG-00	COVER,LEFT TOOL ROUGE	1
3	51163-STG-00	COVER,RIGHT TOOL ROUGE	1
4	51532-RAM-0007	COVER, TOP NOIR	1
5	51552-STG-00	FENDER,FRONT L ROUGE	1
6	51553-STG-00	FENDER,FRONT R ROUGE	1
7	51554-STG-00	STAY,FENDER L	1
8	51556-STG-00	STAY,FENDER R	1
9	95101-05012	NUT,SPRING	2
10	95401-061006-B	NUT,FLANGE	4
11	96112-51216-K	SCREW,TAPPING	2
12	96318-06012-B	SCREW,PAN HEAD	1
13	96318-06015-B	SCREW,PAN HEAD	6
14	97321-061825-B	WASHER,FLANGE	6
15	56812-ATG-00	DECAL "BAROSSA"	1 (jeu de 2)
16	56813-ATG-00R	DECAL LATERAL AV G ROUGE	1
17	56814-ATG-00R	DECAL LATERAL AV D ROUGE	1
18	56815-ATG-00R	DECAL RESERVOIR G ROUGE	1
19	56816-ATG-00R	DECAL RESERVOIR D ROUGE	1
20	56819-ATG-00	LOGO "BAROSSA MOTEUR"	1

[MENU PAGE](#)

[PAGE UP](#)



[PAGE DOWN](#)



[ALL PARTS LIST](#)

BMI
MODEL : AAM-250E

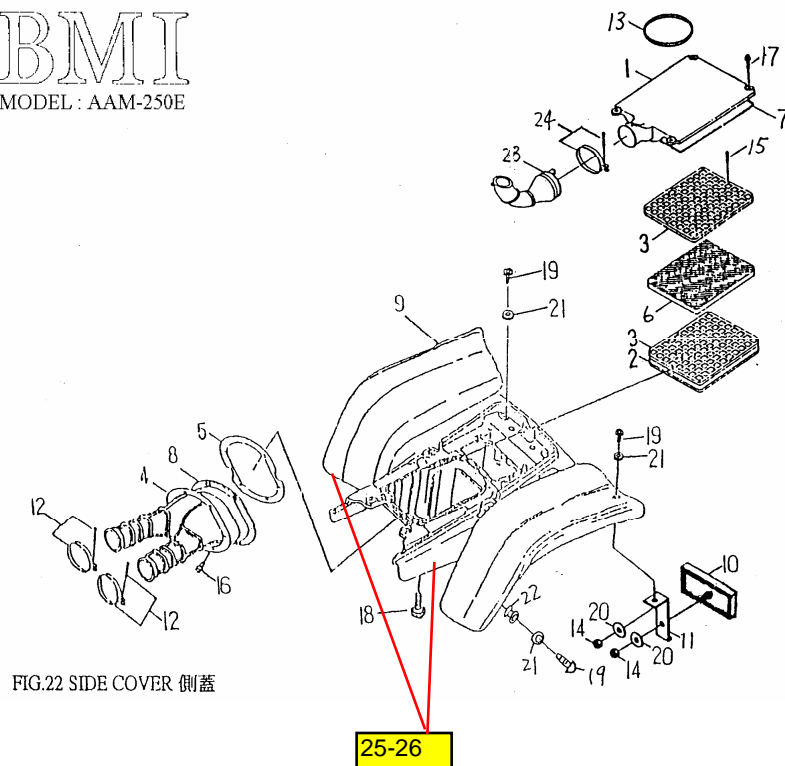


FIG.22 SIDE COVER 側蓋

NO	PARTS NO.	PARTS NAME	QTY
1	13412-CBT-00	CAP,CLEANER CASE	1
2	13432-RAM-00	SEAL,ELEMENT	1
3	13433-CBT-00	PLATE,ELEMENT SET	2
4	13434-RAM-00	PLATE,JOINT	1
5	13435-RAM-00	STAY,JOINT	1
6	13451-RAM-00	ELEMENT,AIR CLEANER	1
7	13452-RAM-00	SEAL,AIR CLEANER COVER	1
8	13453-CBT-00	TUBE,AIR CLEANER JOINT	1
9	51171-RAM-00	COVER,SIDE ROUGE	1
	51171-RAM-0003	COVER,SIDE JAUNE	1
	51171-RAM-0004	COVER,SIDE BLEU	1
	51171-RAM-0007	COVER,SIDE NOIR	1
10	55722-SAF-00	REFLECTOR	2
11	55724-RAM-00	STAY,REFLECTOR	2
12	90260-80047	CLAMP,HOSE	2
13	93210-35900	O-RING	1
14	95401-061006-B	NUT,FLANGE	4
15	96110-43018-K	SCREW,TAPPING	8
16	96310-05014-B	SCREW,PAN HEAD	6
17	96313-06020-K	SCREW,PAN HEAD WITH WASHER	4
18	96318-06012-B	SCREW,PAN HEAD	1
19	96318-06015-B	SCREW,PAN HEAD	6
20	97301-061215-B	WASHER,SPRING 6*11.5*1.5	4
21	97321-061825-B	WASHER,FLANGE	8
22	93580-81610	GROMMET	2
23	13437-CBT-00	GROMMET	1
24	90260-80057	CLAMP,HOSE	1

[MENU PAGE](#) [PAGE UP](#) [▲](#) [PAGE DOWN](#) [▼](#) [ALL PARTS LIST](#)

FIG 22.1 SIDE COVER

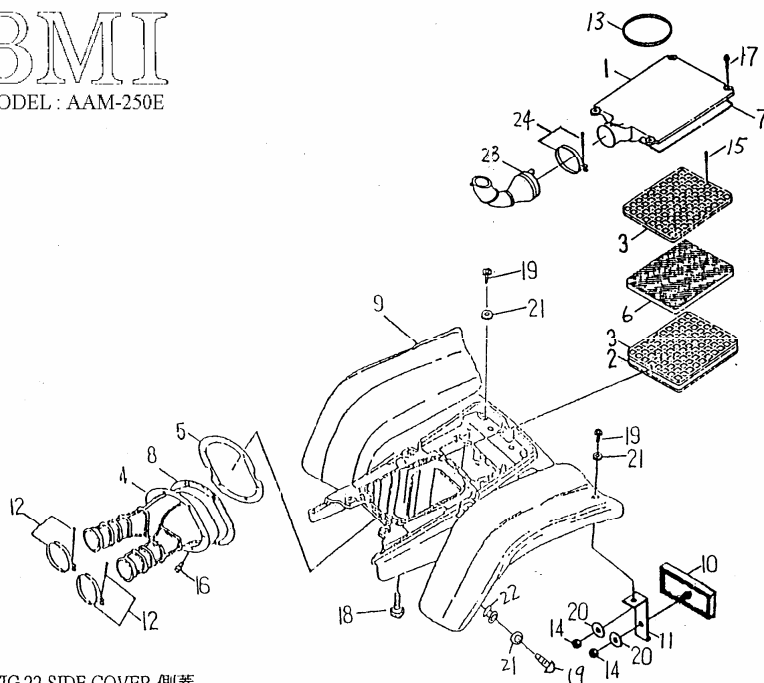


FIG.22 SIDE COVER 側蓋

NO	PARTS NO.	PARTS NAME	QTY
	KITAUTOCQUART	KIT DECO QUARTERBACK	1
	56811-QUA-01	DECAL "QUARTERBACK" DROIT	1
	56811-QUA-02	DECAL "QUARTERBACK" GAUCHE	1
	56811-QUA-05	DECAL "250"	2
	56812-QUA-00	Logo "BAROSSA MOTOR"	1
	KITAUTOC250	KIT DECO WAYSRAL pour quads rouges jaunes bleus	1
	KITAUTOC25001	KIT DECO WAYSRAL pour quads noirs	1
25	56817-ATG-00	DECAL 250 G NOIR pour Silerhawk	1
	56817-ATG-00R	DECAL 250 G ROUGE pour Silverhawk	1
	56817-ATG-00J	DECAL 250 G JAUNE pour Silverhawk	1
26	56818-ATG-00	DECAL 250 D NOIR pour Silverhawk	1
	56818-ATG-00R	DECAL 250 D ROUGE pour Silverhawk	1
	56818-ATG-00J	DECAL 250 D JAUNE pour Silverhawk	1

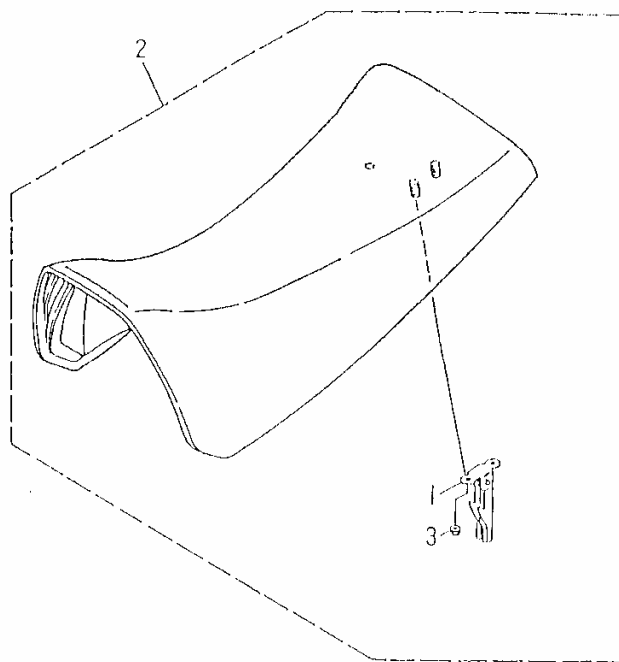


FIG.23 SEAT 座墊

BMI
MODEL:AAM-250E

NO	PARTS NO.	PARTS NAME	Q'TY
1	52710-RAM-00	CATCH COMP,SEAT	1
2	52730-CBT-02	SINGLE SEAT ASS'Y-BAROSSA	1
3	95401-061006-C	NUT,FLANGE	2

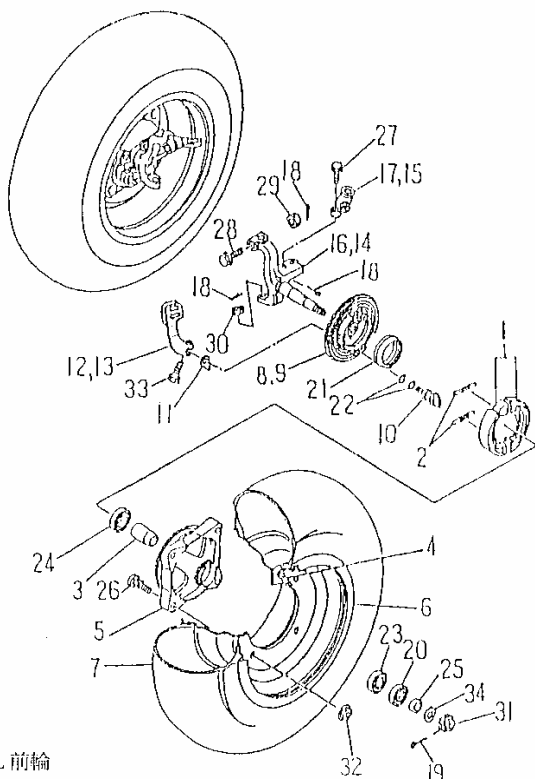


FIG.24 FRONT WHEEL 前輪

BMI
MODEL AAM-250E

[MENU PAGE](#) [PAGE UP](#) [PAGE DOWN](#) [ALL PARTS LIST](#)

NO	PARTS NO.	PARTS NAME	QTY
1	32345-NAF-00	BRAKE SHOE SET	2
2	32346-NAF-00	SPRING,TENSION	4
3	42515-RAM-00	SPACER,BEARING	2
4	42570-RAM-00	VALVE,RIM	2
5	42581-RAM-00	HUB,FRONT	2
6	42582-RAM-00	WHEEL,FRONT 10*5.5AT	2
7	42590-RAM-03	TIRE,FRONT AT21*7-10 K546F (pneu route)	2
	42711-182-00B	PNEU TT HOMOLOGUE	2
8	45811-RAM-01	PLATE,BRAKE SHOE L	1
9	45821-RAM-01	PLATE,BRAKE SHOE R	1
10	45851-RAM-00	CAMSHAFT	2
11	45853-RAM-00	PLATE,INDICATOR	2
12	45855-RAM-01	LEVER,CAMSHAFT L	1
13	45856-RAM-01	LEVER,CAMSHAFT R	1
14	45861-RAM-00	KNUCKLE,STEERING L	1
15	45862-RAM-00	JOINT,ROD L	1
16	45866-RAM-00	KNUCKLE,STEERING R	1
17	45867-RAM-00	JOINT,ROD R	1
18	90240-23020-B	PIN,COTTER 2.3*20	8
19	90240-29025-B	PIN,COTTER 2.9*25	2
20	93110-22357	OIL SEAL SD22*35*7	2
21	93110-50627	OIL SEAL SDD 50*62*7	2
22	93210-24118	O-RING 2.4*11.8	4
23	93320-153511S	BEARING,RADIAL BALL 6202 CS05/2A	2
24	93320-203709S	BEARING,RADIAL BALL 6904 CM/2A	2
25	93510-152209-C	COLLAR	2
26	94710-10032-C	BOLT,STUD	8
27	94716-10030-C	BOLT,KEYHOLE	4
28	94716-10040-C	BOLT,KEYHOLE	2
29	95311-101710-C	NUT,NYLON	2
30	95321-101710-C	NUT,CASTLE	2
31	95321-142215-C	NUT,CASTLE	2
32	95401-101409-C	NUT,FLANGE	8
33	96210-06030-B	BOLT,HEXAGON	2
34	97201-142820-C	WASHER,PLATE 14.2x28.4x2	2

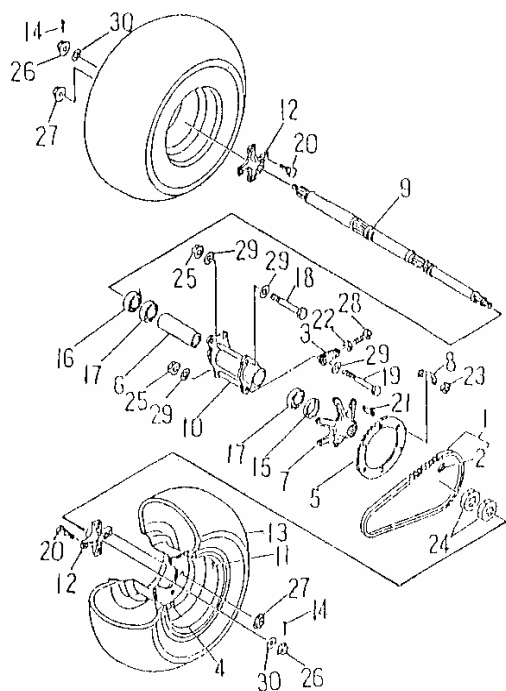


FIG.25 REAR WHEEL 後輪

BMI
MODEL: AAM-250E

NO	PARTS NO.	PARTS NAME	Q'TY
1	25741-CBT-00	CHAIN 520H*94L	1
2	25742-RAM-00	JOINT,CHAIN	1
3	32120-RAM-00	ADJUSTER,CHAIN	2
4	42570-RAM-00	VALVE,RIM	2
5	42812-RAM-00	SPROCKET,DRIVEN 40T	1
6	42815-RAM-00	SPACKER,BEARING	1
7	42821-RAM-00	COLLAR,SPROCKET AXLE	1
8	42823-RAM-00	WASHER,LOCK	3
9	42835-RAM-00	AXLE,WHEEL	1
10	42881-RAM-00	HUB,REAR	1
11	42882-RAM-00	WHEEL,REAR 8*8.0AT	2
12	42885-RAM-00	COLLAR,WHEEL	2
13	42890-RAM-04	TIRE,REAR AT21*10-8 (K547) (peu route)	2
	42811-182-00B	PNEU TT HOMOLOGUE	2
14	90240-29025-B	PIN,COTTER 2.9*25	2
15	93110-42628	OIL SEAL 42*62*8	1
16	93110-44628	OIL SEAL 44*62*8	1
17	93320-356214	BEARING,RSDIAL BALL 6007RS	2
18	94610-10174-B	BOLT	1
19	94610-10178-B	BOLT	1
20	94710-10032-C	BOLT,STUD	8
21	94717-08028-C	BOLT,STUD	6
22	95201-081207-B	NUT,HEXAGON	2
23	95201-081406-B	NUT,HEXAGON	6
24	95201-335014-C	NUT,HEXAGON	2
25	95301-101410-B	NUT,LOCK	2
26	95326-142114-C	NUT,CASTLE FLANGE	2
27	95401-101409-C	NUT,FLANGE	8
28	96210-08055-B	BOLT,HEXAGON	2
29	97201-102620-B	WASHER,PLATE 10.3*26*2.0	4
30	97201-143240-C	WASHER,PLATE 14.2x32.5x40.2	2

[MENU PAGE](#)

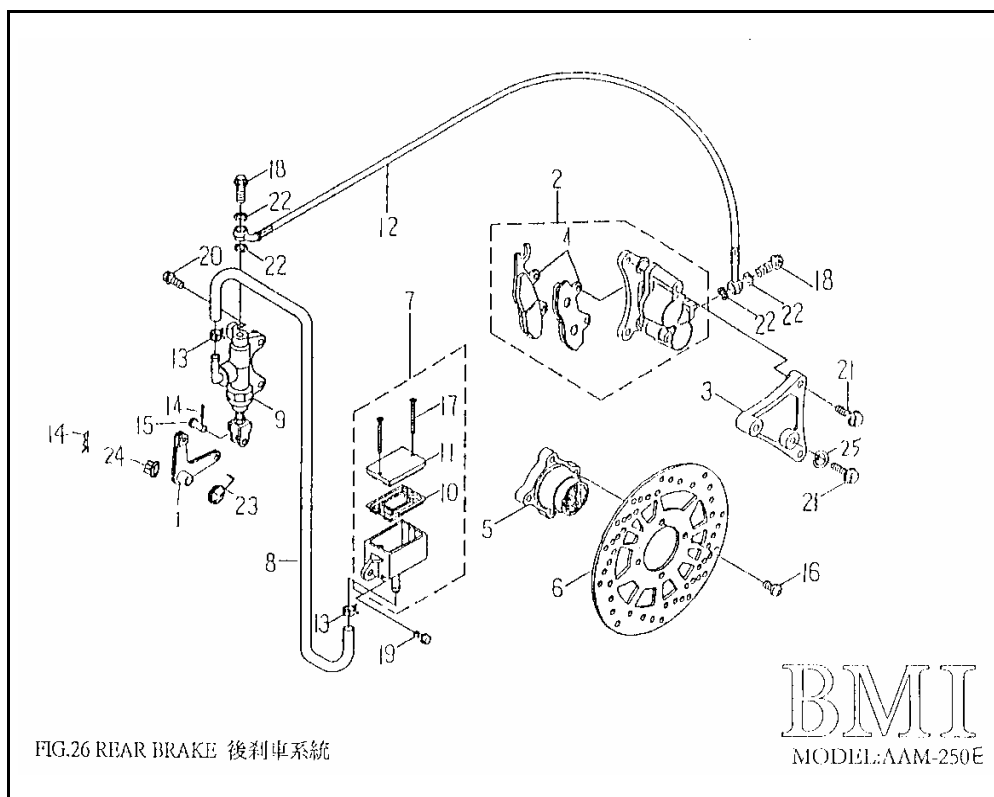
[PAGE UP](#)



[PAGE DOWN](#)



[ALL PARTS LIST](#)



NO	PARTS NO.	PARTS NAME	Q'TY
1	32355-CBT-00	LEVER,CAMSHAFT	1
2	45801-RAM-00	CALIPER ASS'Y	1
3	45810-RAM-00	BRACKET,CALIPER	1
4	45815-RAM-00	PAD,CALIPER	1
5	45830-RAM-00	BRACKET,DISC	1
6	45831-RAM-00	DISC,BRAKE	1
7	45871-RAM-00	RESERVOIR	1
8	45874-RAM-00	HOSE 8*13*400	1
9	45877-RAM-00	CYLINDER KIT,MASTER	1
10	45878-NAF-00	DIAPHRAGM,RESERVOIR	1
11	45879-NAF-00	CAP,RESERVOIR	1
12	61320-RAM-00	HOSE,BRAKE	1
13	90220-80013	CLAMP	2
14	90230-12008	COTTER PIN	2
15	94610-06016-B	PIN,CLEVIS	1
16	94706-08017-B	BOLT,BUTTON	4
17	94712-04040-K	SCREW,FLAT HEAD	2
18	94716-10022-G	BOLT,UNION	2
19	96414-06016-B	BOLT,FLANGE	1
20	96414-06022-B	BOLT,FLANGE	2
21	96414-08020-B	BOLT,FLANGE	4
22	97230-101512	WASHER,COPPER 10.3*15*1.2	4
23	97508-22202-B	SPRING TORSION	1
24	95401-081208-B	NUT,FLANGE	1
25	97301-081420-B	WASHER,SPRING	2

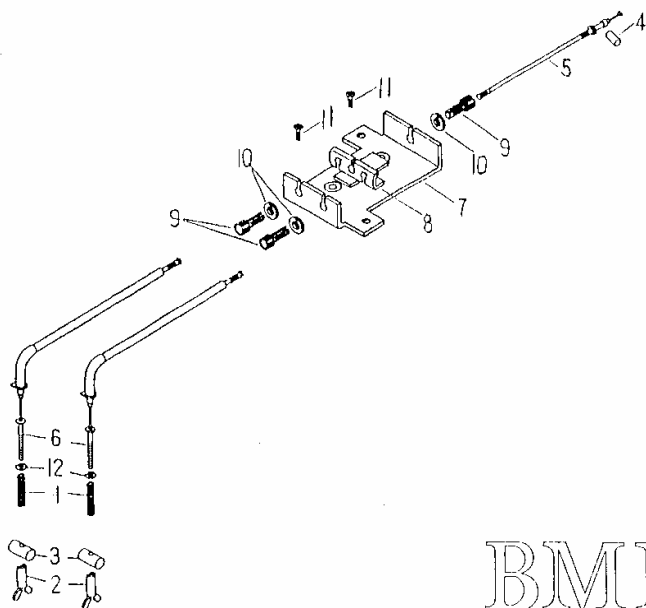


FIG.27 INTEGRATED 整合式剎車系統

BMI
MODEL : AAM-250E

NO	PARTS NO.	PARTS NAME	Q'TY
1	97501-12087-B	SPRING,COMPRESSION	2
2	61379-SK9-00	NUT,ADJUST	2
3	61389-NAF-00	PIN,FIXTURE	2
4	61389-RAM-00	PIN,FIXTURE	1
5	61811-CBT-00	CABLE,BRAKE UPPER	1
6	61812-RAM-00	CABLE,BRAKE LWR	2
7	61861-RAM-00	CABLE,PAN CONNECTOR	1
8	61863-RAM-00	SLIDER,CONNECTOR	1
9	62916-RAM-00	BOLT,WIRE ADJUSTING	3
10	62917-RAM-00	NUT,WIRE ADJUSTING	3
11	94712-06012-B	SCREW,FLAT HEAD	2
12	97011-06008-B	CIRCLIP 6*0.8	2

[MENU PAGE](#)

[PAGE UP](#)



[PAGE DOWN](#)



[ALL PARTS LIST](#)

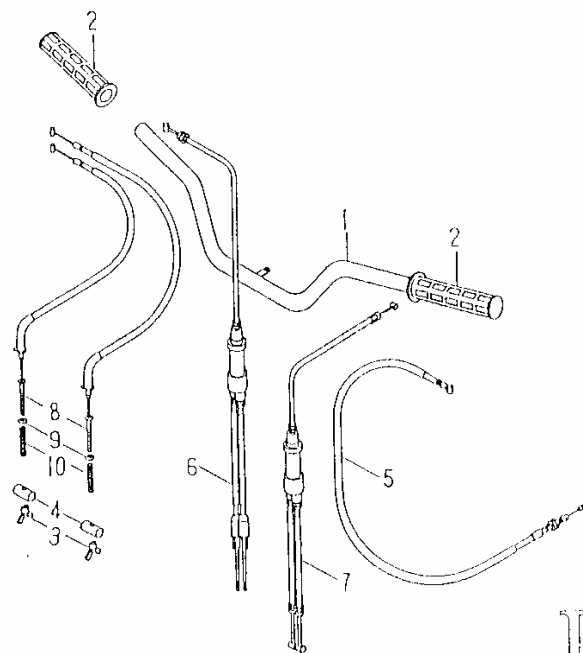
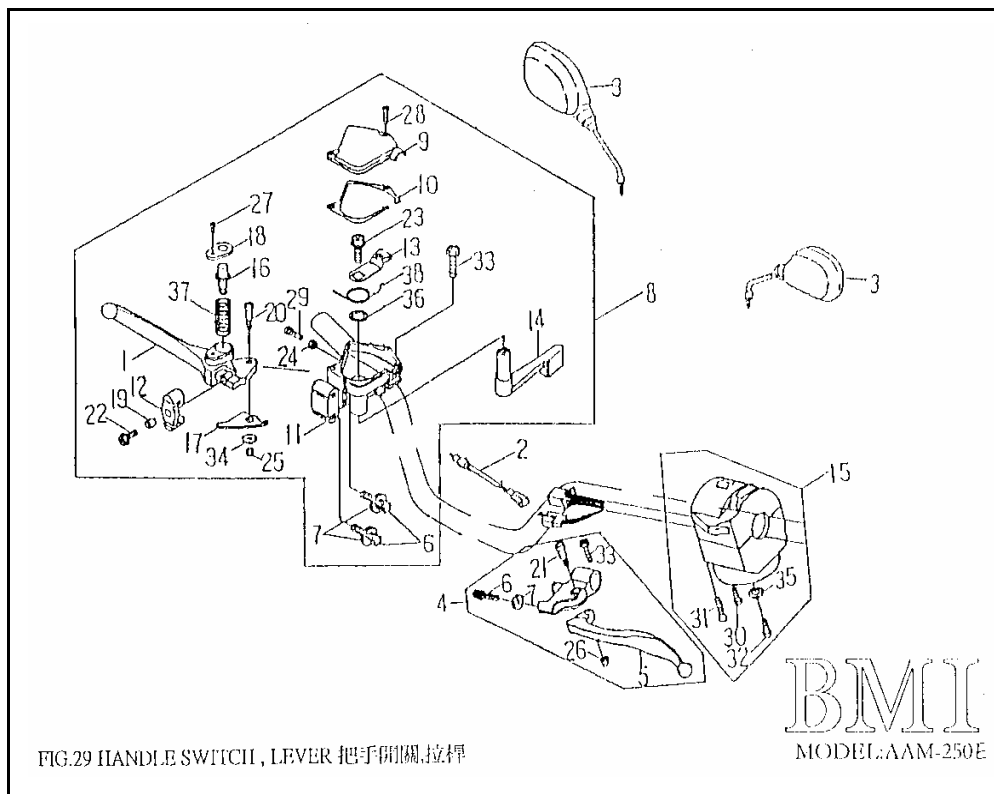


FIG.28 STEERING HANDLE CABLE 轉向把手,鋼索

BMI
MODEL:AAM-250E

NO	PARTS NO.	PARTS NAME	QTY
1	46110-RAM-01	HANDLEBAR	1
2	46240-RAM-00	GRIP	2
3	61379-SK9-00	NUT,ADJUST	2
4	61389-NAF-00	PIN,FIXTURE	2
5	61420-CBT-00	CABLE,CLUTCH	1
6	61620-CBT-00	CABLE,THROTTLE	1
7	61720-CBT-00	CABLE,CHOKE	1
8	61820-RAM-00	CABLE,BRAKE	2
9	97011-06008-B	CIRCLIP 6*0.8	2
10	97501-12087-B	SPRING,COMPRESSION	2



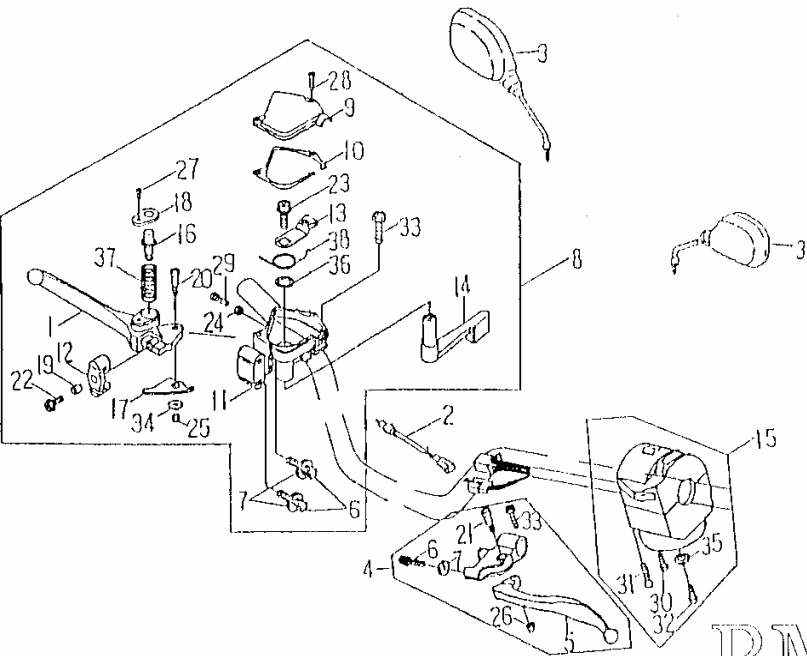
NO	PARTS NO.	PARTS NAME	Q'TY
1	45872-RAM-00	LEVER,R	1
2	45890-RAM-00	WIRING,FR STOP SWITCH	1
3	56270-ROA-00	MIRROR ASS'Y,BACK	1
4	62910-RAM-01	LEVER ASS'Y,HANDLEL	1
5	62912-SK9-01	LEVER,L	1
6	62916-RAM-00	BOLT,WIRE ADJUSTING	3
7	62917-RAM-00	NUT,WIRE ADJUSTING	3
8	62920-RAM-01	THROTTLE LEVER ASS'Y	1
9	62923-RAM-00	CAP,THROTTLE	1
10	62924-RAM-00	GASKET,THROTTLE	1
11	62925-RAM-00	THROTTLE LEVER	1
12	62926-RAM-00	JOINT,CABLE	1
13	62927-RAM-00	ARM,THROTTLE	1
14	62928-RAM-00	LEVER,THROTTLE	1
15	62930-RAM-02	HANDLE SWITCH ASS'Y L	1
16	62971-RAM-00	PIN,LOCK	1
17	62973-RAM-00	LOCK,LEVER	1
18	62976-RAM-00	COVER	1
19	93560-68507	COLLAR,LEVER 6.3*8.5*7.4	1
20	94710-05022-G	BOLT,LEVER	1
21	94710-06029-G	BOLT,LEVER	1
22	94714-06016-G	BOLT	1
23	94714-08012-G	BOLT	1
24	95201-050804-G	NUT,HEXAGON	1
25	95311-050805-K	NUT,NYLON	1
26	95311-061006-K	NUT,NYLON	1
27	96310-03008-B	SCREW,PAN HEAD	1
28	96310-04015-G	SCREW,PAN HEAD	2
29	96310-05015-G	SCREW,PAN HEAD	1
30	96310-05030-G	SCREW,PAN HEAD	1
31	96310-05040-G	SCREW,PAN HEAD	1
32	96310-06010-G	SCREW,PAN HEAD	1
33	96510-06020-G	BOLT	2

[MENU PAGE](#)
[PAGE UP](#)

[PAGE DOWN](#)

[ALL PARTS LIST](#)

FIG 29.1 HANDLE SWITCH,LEVER



NO	PARTS NO.	PARTS NAME	Q'TY
34	97201-051516-C	WASHER,PLATE 5.3*15*1.6	1
35	97201-061310-B	WASHER,PLATE 6.5*13*1.0	1
36	97201-142016-C	WASHER,PLATE 14.2*19.7*1.6	1
37	97501-08025-B	SPRING	1
38	97508-10240-B	SPRING	1

FIG.29 HANDLE SWITCH, LEVER 把手開關,拉桿

BMI
MODEL:AAM-250E

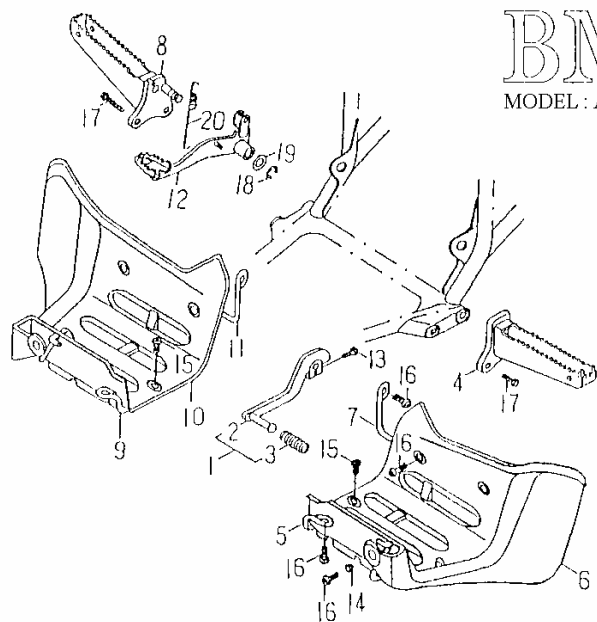


FIG.30 STAND FOOTREST 脚踏器

NO	PARTS NO.	PARTS NAME	Q'TY
1	53210-RAM-00	CHANGER PENDAL ASS'Y	1
2	53211-RAM-00	CHANGER PENDAL	1
3	53214-ROA-00	RUBBER,CHANGE PEDAL	1
4	53231-RAM-00	FOOTREST L	1
5	53233-RAM-00	MUDGUARD STAY L1	1
6	53234-RAM-00	MUDGUARD L	1
7	53236-RAM-00	MUDGUARD STAY L2	1
8	53241-RAM-02	FOOTREST R	1
9	53243-RAM-00	MUDGUARD STAY R1	1
10	53244-RAM-00	MUDGUARD R	1
11	53246-CBT-00	MUDGUARD STAY R2	1
12	53261-CBT-01	PEDAL,BRAKE	1
13	94714-06020-B	BOLT,FLANGE	1
14	95401-061006-B	NUT,FLANGE	1
15	96318-06012-B	SCREW,PAN HEAD	6
16	96318-06015-B	SCREW,PAN HEAD	8
17	96414-10025-B	BOLT,FLANGE	4
18	97011-12010-B	CIRCLIP 12*1.0	1
19	97201-152620-B	WASHER,PLATE 15.2*25.6*2.0	1
20	97506-12140-B	SPRING,TENSION	1

[MENU PAGE](#)

[PAGE UP](#)



[PAGE DOWN](#)



[ALL PARTS LIST](#)

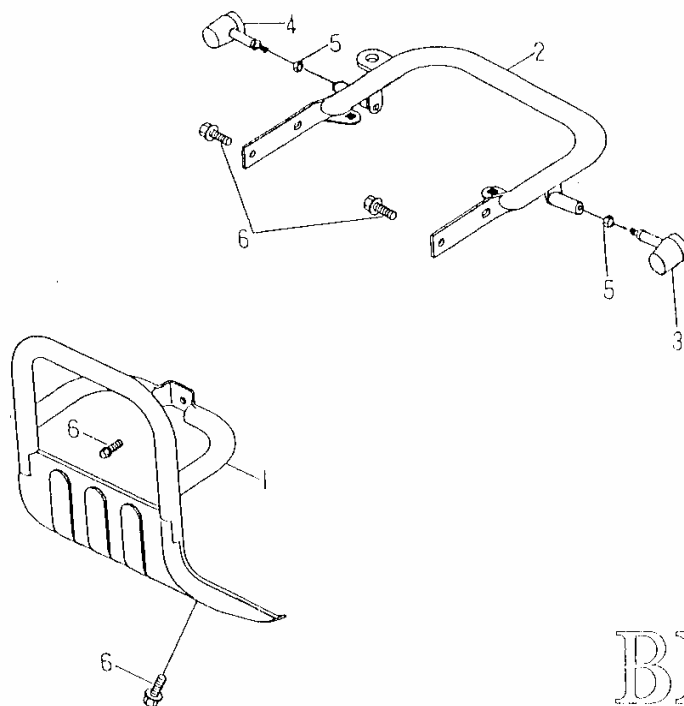


FIG.31 GUARD 保護桿

BMI
MODEL AAM-250E

NO	PARTS NO.	PARTS NAME	QTY
1	41601-RAM-00	SHIELD,FRONT	1
2	42850-RAM-04	SHIELD,REAR	1
3	55750-RAM-00	WINKER ASS'Y,L REAR	1
4	55760-RAM-00	WINKER ASS'Y,R REAR	1
5	95201-101408-B	NUT,HEXAGON	2
6	96414-08016-B	BOLT,FLANGE	7

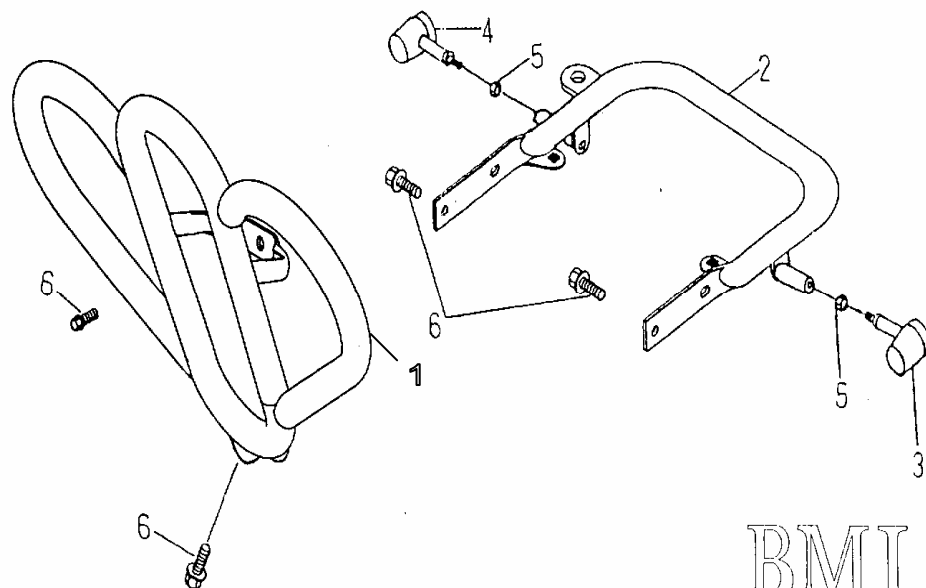


FIG.31 GUARD 保護桿 (FOR OIL COOLER)

BMI
MODEL : AAM-250E

NO	PARTS NO.	PARTS NAME	Q'TY
1	41601-QUA-01	SHIELD,FRONT(FOR OIL COOLER)	1
2	52850-RAM-04	SHIELD,REAR	1
3	55750-RAM-00	WINKER ASS'Y,L REAR	1
4	55760-RAM-00	WINKER ASS'Y,R REAR	1
5	95201-101408-B	NUT,HEXAGON	2
6	96414-08016-B	BOLT,FLANGE	7

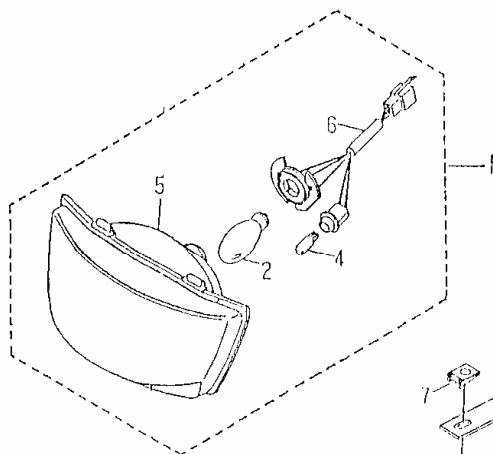
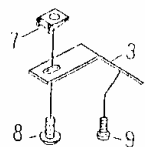


FIG.32 HEADLIGHT 前燈



BMI
MODEL: AAM-250E

NO	PARTS NO.	PARTS NAME	Q'TY
1	55300-STG-00	HEAD LIGHT ASS'Y	1
2	55314-NFF-00	BULB,HEAD LIGHT 12V 35/35W	1
3	55315-STG-00	STAY,HEAD LIGHT	1
4	55316-NGF-00	BULB,POSITION LAMP	1
5	55320-STG-00	LENS ASS'Y	1
6	55340-STG-00	SOCKET CORD ASS'Y	1
7	95101-05012	NUT,SPRING	1
8	96112-51616-K	SCREW,TAPPING	1
9	96310-04010-B	SCREW,PAN HEAD	1

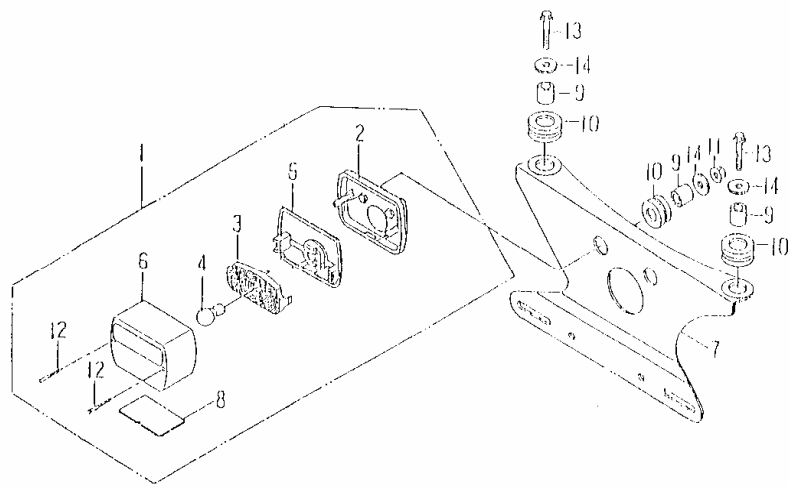


FIG.33 TAIL LIGHT 後燈

BMI
MODEL:AAM-250E

NO	PARTS NO.	PARTS NAME	QTY
1	55700-CHP-00	TAIL LIGHT ASS'Y	1
2	55701-CHP-00	STAND,TAIL LIGHT	1
3	55713-PAF-00	BULB STAND,TAIL LIGHT	1
4	55714-PAF-00	BULB, TAIL LIGHT	1
5	55715-PAF-00	WASHER	1
6	55721-PAF-00	LENS,TAIL LIGHT	1
7	55726-RAM-00	HOLDER,TAIL LIGHT	1
8	55743-PAF-00	LENS,LICENSE LIGHT	1
9	93510-061010	COLLAR	4
10	93580-102212	GROMMET	4
11	95401-061006-B	NUT,FLANGE	2
12	96112-43818-B	SCREW,TAPPING	2
13	96414-06020-B	BOLT,FLANGE	2
14	97201-061820-B	WASHER,PLATE	4

BMI
MODEL : AAM-250E

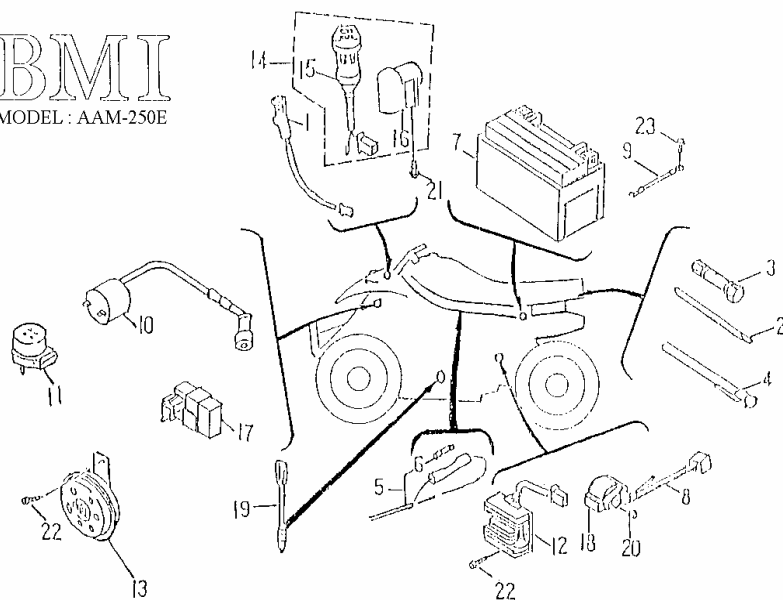


FIG.34 WIRE HARNESS 主電路配線

NO	PARTS NO.	PARTS NAME	Q'TY
1	55550-RAM-00	NEUTRAL LIGHT ASS'Y	1
2	56120-CBT-00	SCREW DRIVER	1
3	56140-CBT-00	TOOL PLUG	1
4	56190-RAM-00	GAUGE,AIR	1
5	61120-CBT-02	WIRE,HARNESS	1
6	61151-CHP-00	FUSE (15A250V)	1
7	62100-CHP-00	BATTERY ASS'Y (YTX9A-BS)	1
8	62110-CBT-00	CABLE,BATTERY	1
9	62120-RAM-00	CABLE,EARTH	1
10	62310-CBT-00	IGNITION COIL ASS'Y	2
11	62350-NAF-01	FLASHER RELAY ASSEMBLY	1
12	62360-CBT-00	RECTIFIER®ULATOR COMP	1
13	62370-NAF-00	HORN	1
14	62500-RAM-00	KEY SET	1
15	62501-RAM-00	MAIN SWITCH ASS'Y	1
16	62503-RAM-00	LOCK COMP,STEERING HANDLE	1
17	62540-CBT-00	C.D.I UNIT ASS'Y	1
18	62550-CBT-00	STARTER RELAY SWITCH COMP	1
19	62980-CHP-00	SWITCH ASS'Y,REAR STOP	1
20	95401-061006-B	NUT,FLANGE	1
21	96310-05012-B	SCREW,PAN HEAD5*12	2
22	96312-06016-K	SCREW,PAN HEAD WITH WASHER	2
23	96414-06012-B	BOLT,FLANGE	1

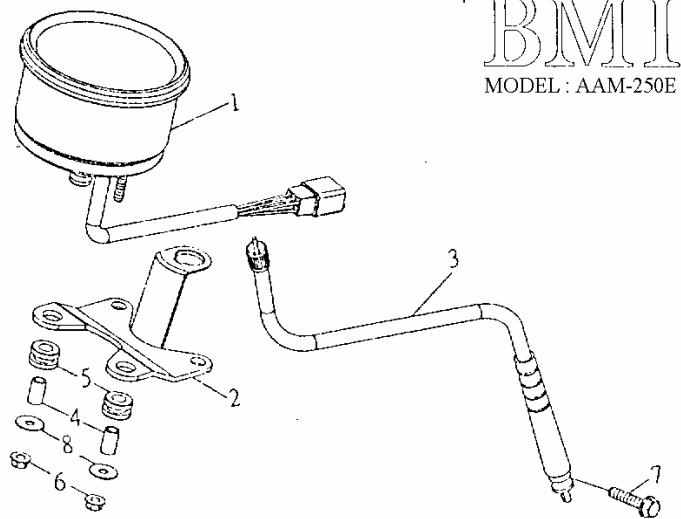


FIG.35 SPEEDOMETER 速度表

NO	PARTS NO.	PARTS NAME	QTY
1	55510-RAM-01	SPEEDOMETER ASS'Y	1
2	55516-RAM-01	HOLDER,SPEEDOMETER	1
3	61520-RAM-01	CABLE,SPEEDOMETER ASS'Y	1
4	93510-050814-B	COLLAR,SPEEDOMTER	2
5	93580-81615	GROMMET	2
6	95401-050805-B	NUT,FLANGE	2
7	96414-06020-B	BOLT,FLANGE 6*20	1
8	97201-051610	WASHER,PLATE 5.3*16*1	2

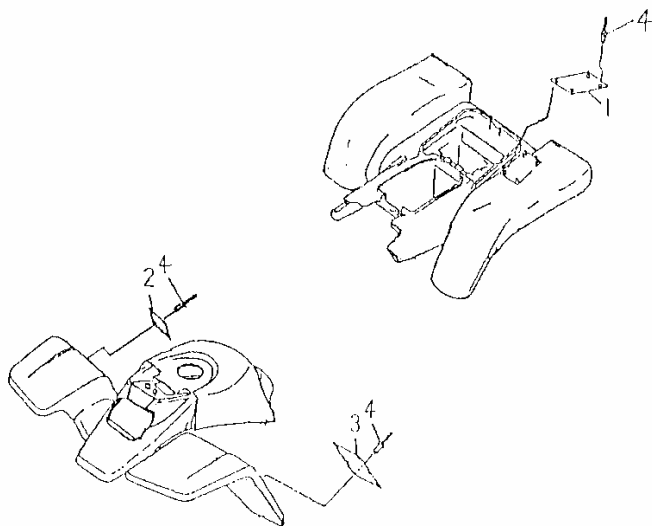


FIG.36 警告標示

BMI
MODEL:AAM-250E

NO	PARTS NO.	PARTS NAME	Q'TY
1	56576-AAM-01	LABEL WARNING 3 (Tire)	1
2	56578-AAM-00E	LABEL WARNING 2 (Age)	1
3	56781-AAM-01	LABEL WARNING 1 (Operation)	1
4	94320-32096	RIVET 3.2*9.6	14

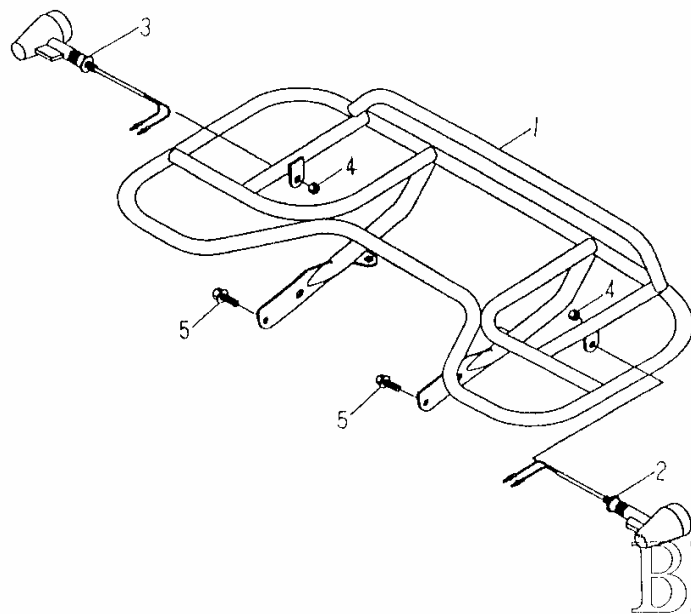


FIG.37 CARRIER,REAR 後架

NO	PARTS NO.	PARTS NAME	QTY
1	52850-RAM-03	CARRIER,REAR	1
2	55750-RAM-00	WINKER ASS'Y,L REAR	1
3	55760-RAM-00	WINKER ASS'Y,R REAR	1
4	95201-101408-B	NUT,HEXAGON	2
5	96414-08016-B	BOLT,FLANGE	4

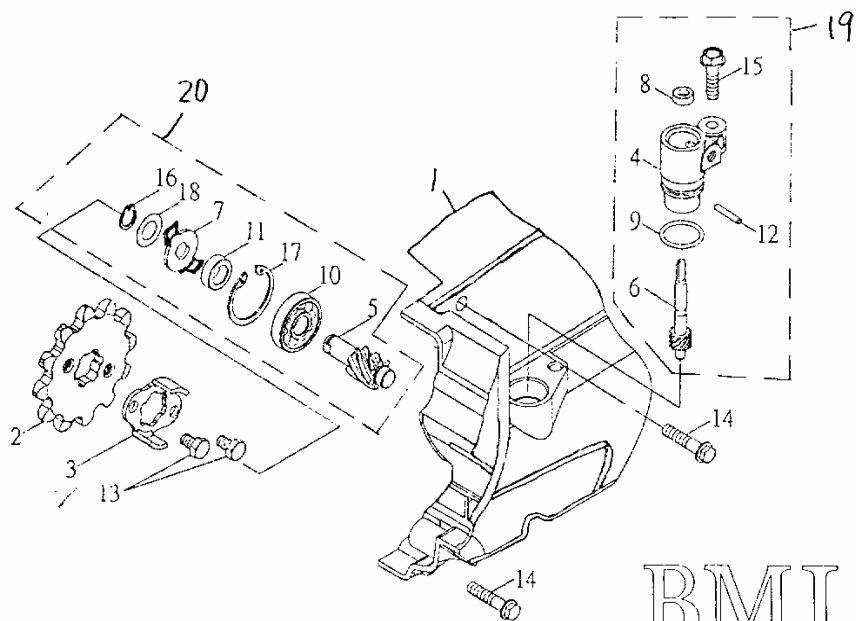


FIG.38 GEAR,SPEEDOMETER 速度表齒輪

BMI
MODEL : AAM-250E

NO	PARTS NO.	PARTS NAME	QTY
1	15421-CBT-01	COVER,L REAR CRANKCASE	1
2	25711-CBT-00	SPROCKET DRIVE(12T)	1
3	25716-RAM-00	PLATE,FIXING	1
4	42563-GOO-00	GEAR,SPEEDOMETER BODY	1
5	45835-CBT-00	GEAR DRIVE (8T)	1
6	45838-RAM-00	GEAR,SPEEDOMETER (10T)	1
7	45849-CBT-00	CLUTCH SPEEDOMETER	1
8	93110-06114	OIL SEAL VC 6*11*4	1
9	93210-15190	O-RING 1.5*19	1
10	93320-103009U	BEARING,RADIAL BALL 6200LUCS05/2A	1
11	93510-101706-B	COLLAR	1
12	94510-30018	PIN,DOWEL 3*18	1
13	96210-06010-B	BOLT,HEXAGON 6*10	2
14	96411-06020-B	BOLT,FLANGE 6*20	2
15	96414-06025-B	BOLT,FLANGE 6*25	1
16	97010-10010-K	CIRCLIP STW-10	1
17	97012-30012-K	CIRCLIP RTW-30	1
18	97201-101805	WASHER,PLATE 10.5*18*0.5	1
19	42560-AAM-00	GEAR,SPEEDOMETER ASS'Y	1
20	45834-CBT-00	GEAR DRIVE ASS'Y	1

[MENU PAGE](#)

[PAGE UP](#) ▲

[PAGE DOWN](#) ▼

[ALL PARTS LIST](#)

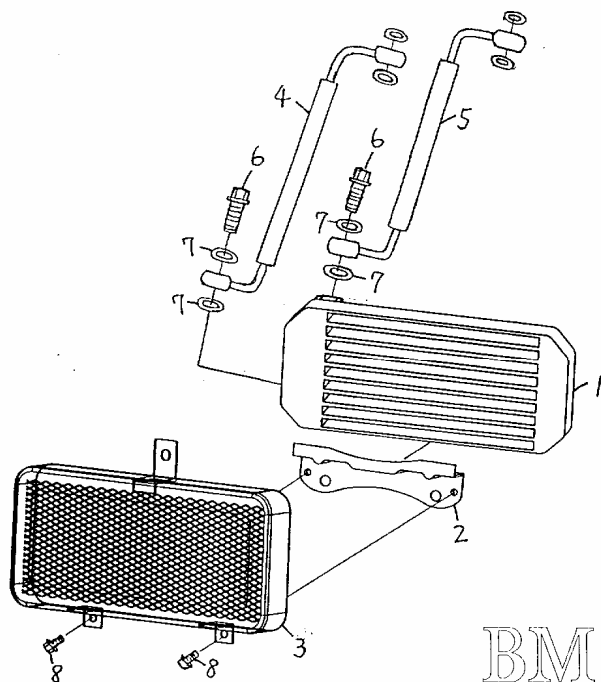


FIG.39 OIL COOLING SET 機油冷卻裝置

NO	PARTS NO.	PARTS NAME	QTY
1	61900-CBT-00	OIL COOLING TANK	1
2	61903-CBT-00	LWR HOLDER,OIL COOLING TANK	1
3	61904-CBT-00	OIL COOLING TANK COVER	1
4	61910-CBT-00	TUBE,OIL COOLING TANK (405MM)	1
5	61911-CBT-00	TUBE,OIL COOLING TANK (420MM)	1
6	94716-12032-G	BOLT,UNION M12*32L	2
7	97231-122020	WASHER,ALUMINUM 12.3*20*2.0	8
8	96414-06012-B	BOLT,FLANGE 6*12	2

[MENU PAGE](#)

[PAGE UP ▲](#)

[PAGE DOWN ▼](#)

[ALL PARTS LIST](#)