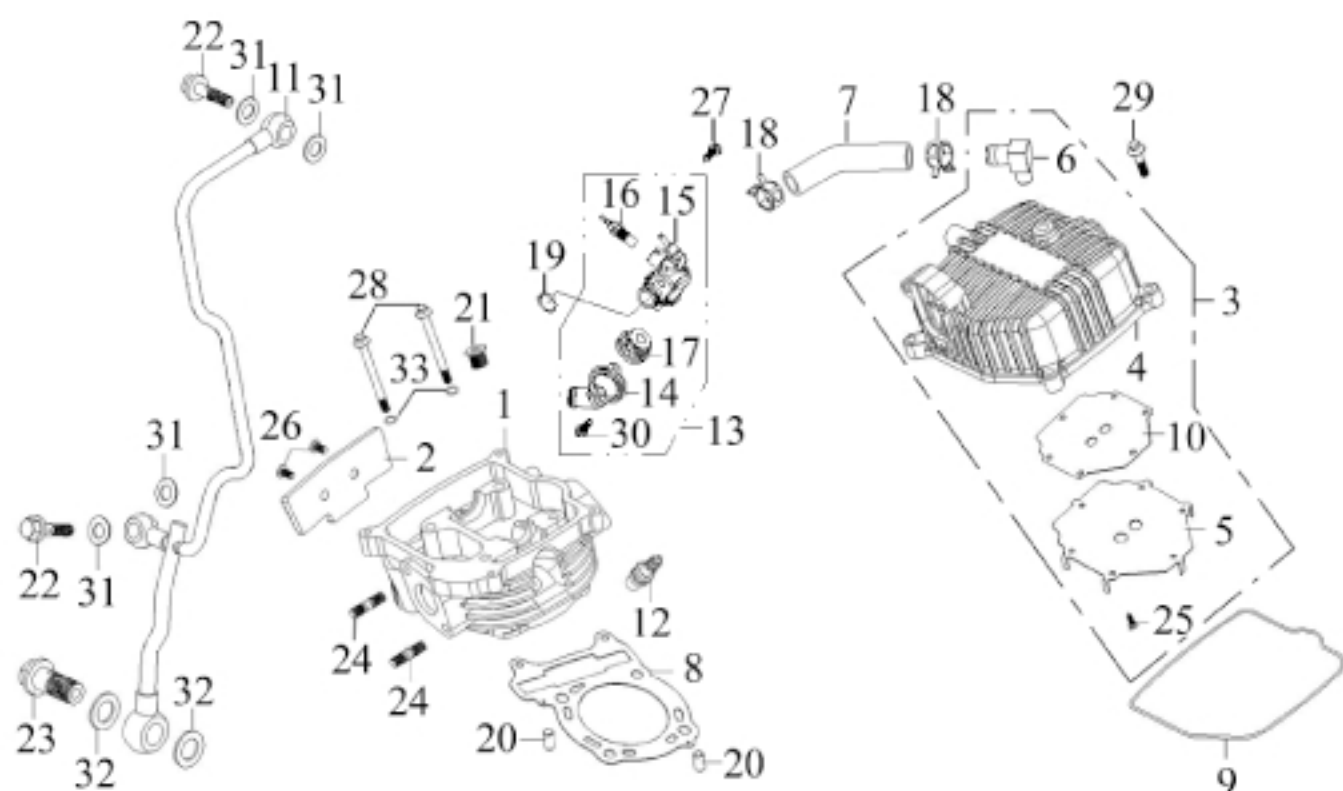
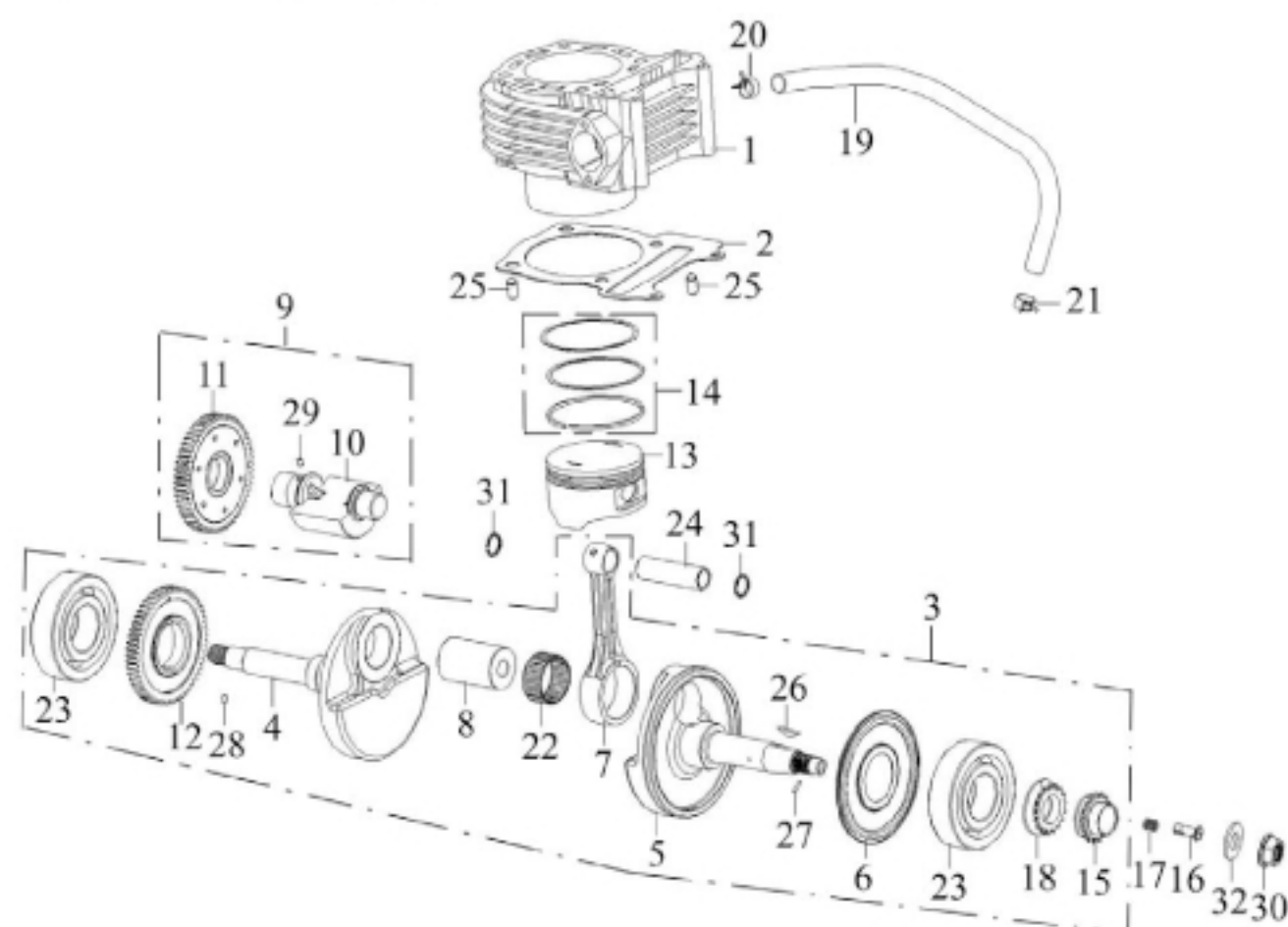


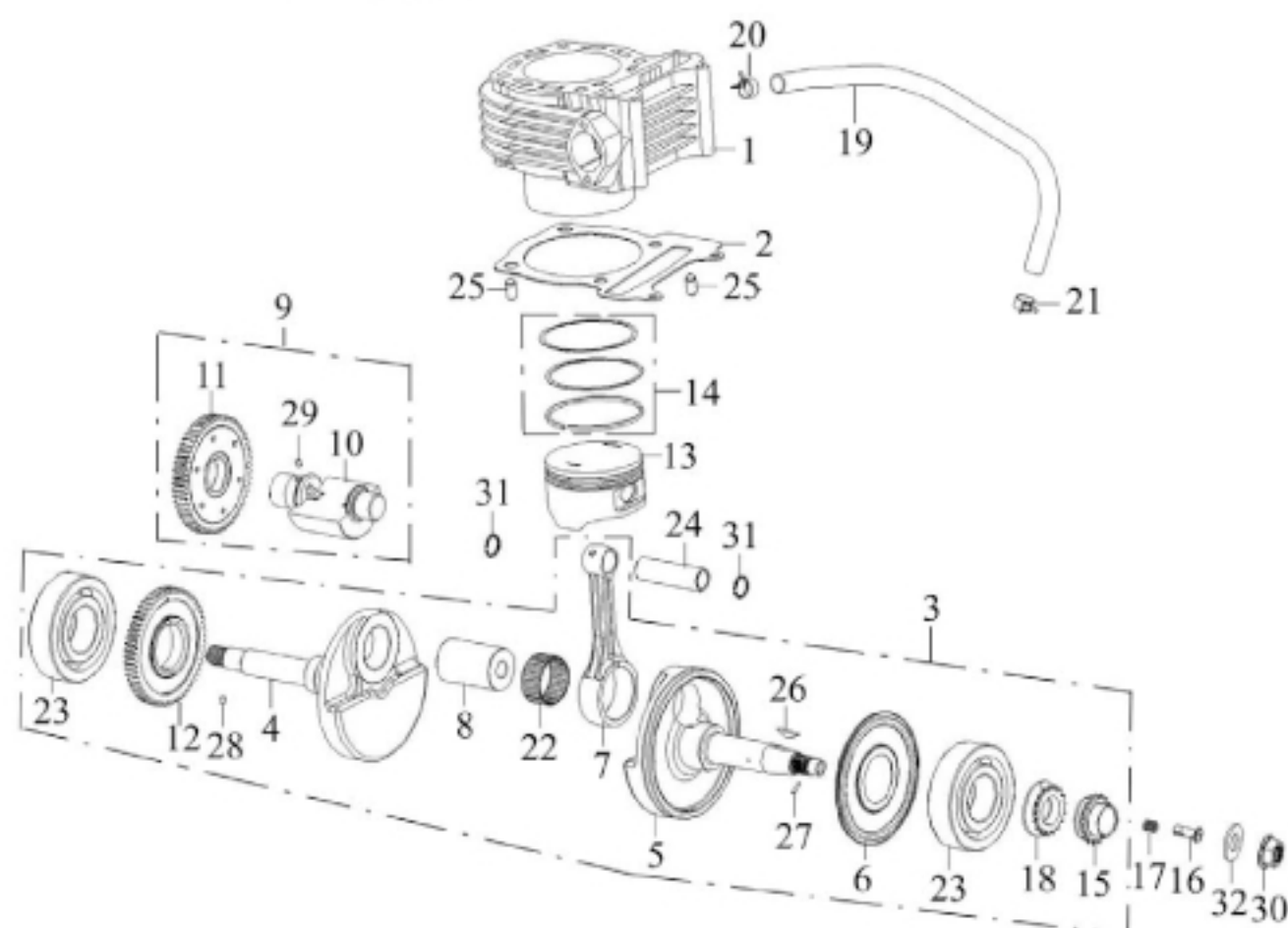
NO. 項目	PARTS NO. 零件號碼	PARTS NAME 零件名稱		Q'TY 用量	NOTE 備註
1	11121-JOW-00	HEAD COMP, CYLINDER	汽缸頭	1	
2	11124-JOW-00	SIDE COVER, CYLINDER HEAD	汽缸頭裝飾片	1	
3	11140-JOW-00	COVER COMP, CYLINDER HEAD	汽缸頭蓋組	1	
4	11141-JOW-00	COVER, CYLINDER HEAD	汽缸頭蓋	1	
5	11145-JOW-00	PLATE, VENTILATION	通風管導板	1	
6	11146-JOW-01	BREATHER	通氣管接頭	1	
7	11148-JOW-00	PIPE, VENTILATED	缸蓋通氣管	1	
8	11181-JOW-00	GASKET, CYLINDER HEAD	汽缸頭墊片	1	
9	11191-JOW-00	GASKET, HEAD COVER	汽缸頭蓋墊圈	1	
10	11195-JOW-00	GASKET, PLATE	通風管導板墊片	1	
11	43322-JOW-00	PIPE, LUBRICATION	油管組件	1	
12	62210-JOW-00	PLUG, SPARK (DPR7EA NGK)	火星塞	1	
13	62730-JOW-00	THERMOSTAT COMP	節溫器組合	1	
14	62731-JOW-00	THERMOSTAT HULL	節溫器殼體	1	
15	62732-JOW-00	THERMOSTAT COVER	節溫器蓋	1	
16	62740-JOW-00	THERMO SENSOR	溫度感測器	1	
17	62745-JOW-00	THERMOSTAT	節溫器	1	
18	90220-10138-B	CLIP 10*13.8	板型管夾	2	
19	93210-17175	O-RING 1.7*17.5	護油圈	1	
20	94410-10016	PIN, DOWEL 10*16	定位銷	2	
21	94706-12010-B	BOLT	缸頭螺塞	1	
22	94716-08025-R	BOLT, UNION	接合螺栓	2	



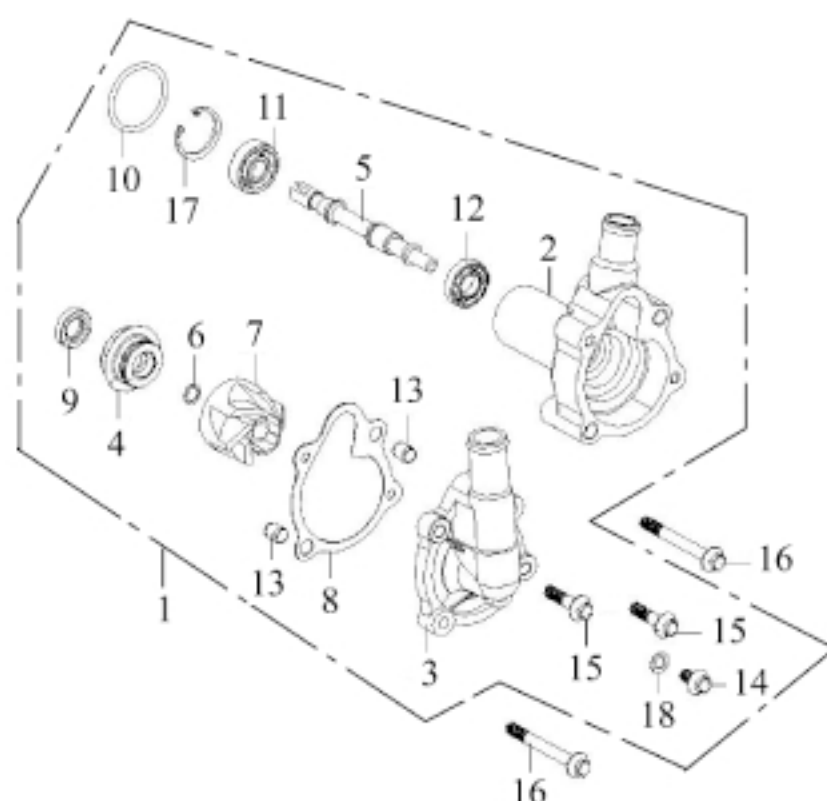
NO.	PARTS NO.	PARTS NAME	Q'TY	NOTE
項目	零件號碼	零件名稱	用量	備註
23	94716-12030-R	BOLT, UNION	1	接合螺栓
24	94717-08032-C	BOLT, STUD 8*32	2	雙頭螺栓
25	96112-40818-C	SCREW, TAPPING	6	自攻螺絲
26	96318-05008-R	SCREW, PAN HEAD	2	十字孔頭螺絲
27	96411-06018-R	BOLT, FLANGE	2	凸緣螺栓
28	96411-06100-R	BOLT, FLANGE	2	凸緣螺栓
29	96414-06025-R	BOLT, FLANGE	4	凸緣螺栓
30	96416-06016-R	BOLT, FLANGE	2	凸緣螺栓
31	97230-081410	WASHER, COPPER 8.1*14*1	4	銅墊圈
32	97230-122010	WASHER, COPPER 12.6*20*1	2	銅墊圈
33	97231-061110	WASHER, ALUMINUM 6.2*11..2*1	2	鋁墊圈



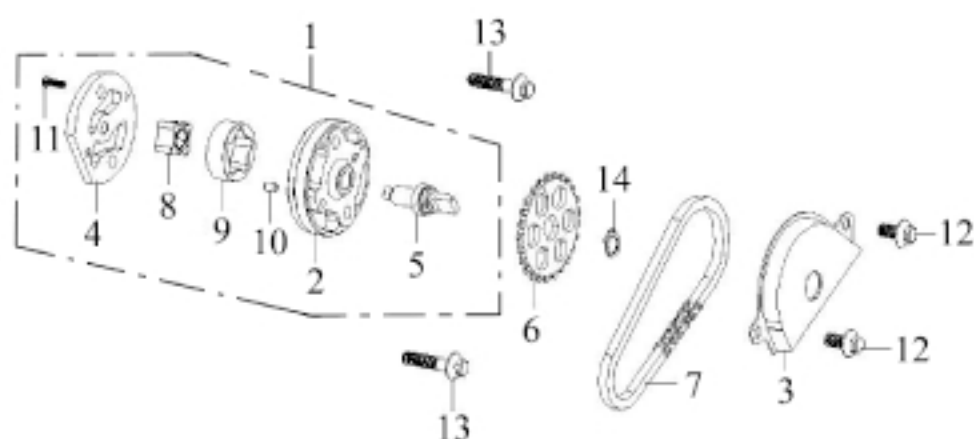
NO. 項目	PARTS NO. 零件號碼	PARTS NAME 零件名稱	Q'TY 用量	NOTE 備註
1	11111-JOW-00	CYLINDER COMP	1	汽缸
2	11151-JOW-00	GASKET, CYLINDER	1	汽缸墊片
3	11400-JOW-00	CRANKSHAFT COMP	1	曲軸總成
4	11412-JOW-00	CRANK L	1	左曲軸
5	11422-JOW-00	CRANK R	1	右曲軸
6	11427-JOW-00	ROTOR, OIL	1	甩油盤
7	11451-JOW-00	ROD, CONNECTING	1	連桿
8	11481-JOW-00	PIN, CRANK	1	曲軸銷
9	11500-JOW-00	BALANCER ASS'Y	1	平衡軸總成
10	11510-JOW-00	SHAFT, BALANCER	1	平衡軸
11	11520-JOW-00	GEAR, TRANSMISSION 56T	1	平衡軸傳動齒輪組
12	11561-JOW-00	GEAR, DRIVE 56T	1	平衡軸驅動齒輪
13	11631-JOW-00	PISTON	1	活塞
14	11636-JOW-00	RING SET, PISTON	1	活塞環組
15	13178-JOW-00	OIL PUMP DRIVING WHEEL 16T	1	機油泵驅動齒輪
16	13321-CBT-00	THROUGH OIL	1	通油器
17	13324-CBT-00	SPRING, OIL THROUGH	1	通油器彈簧
18	14311-JOW-00	GEAR, TIMING DRIVE 17T	1	正時鏈輪
19	43426-JOW-00	HOSE, WATER PUMP EX	1	水泵出水管
20	90220-12217-B	CLIP 12*21.7	2	板型管夾
21	90220-12230-B	CLIP 12*23	2	板型管夾
22	93310-3240180	NEEDLE BEARING	1	滾針軸承



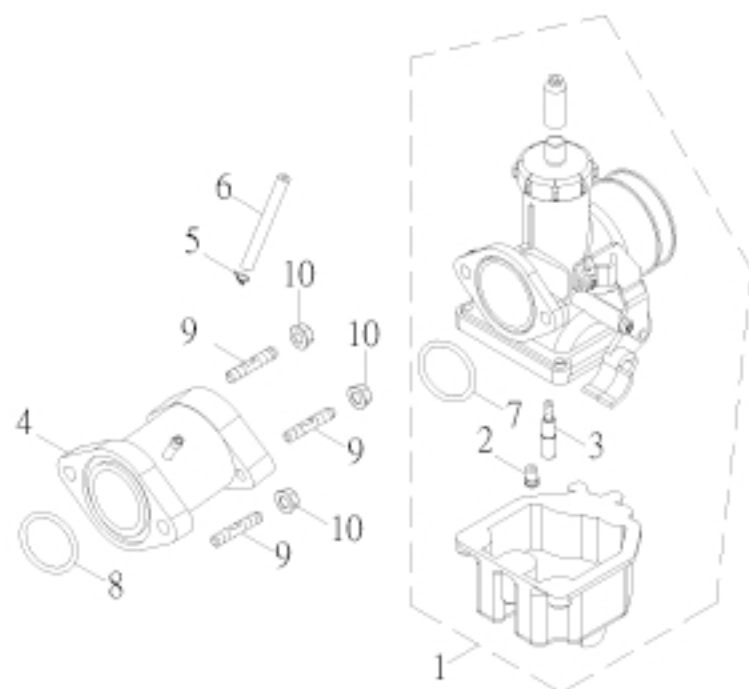
NO. 項目	PARTS NO. 零件號碼	PARTS NAME 零件名稱		QTY 用量	NOTE 備註
23	93320-3580213	BALL BEARING 6307 D2/P5	滾珠軸承	2	
24	93510-121758	PIN, PISTON 12.1*17*57.7	活塞銷	1	
25	94410-10016	PIN, DOWEL 10*16	定位銷	2	
26	94420-04025	KEY, WOODRUFF 25*14*4	半圓鍵	1	
27	94510-20012	PIN, DOWEL	滾針	1	
28	94510-40005	PIN, DOWEL	滾針	1	
29	94510-40008	PIN, DOWEL	滾針	1	
30	95401-141911-C	NUT, FLANGE	凸緣螺帽	1	
31	97050-10019-K	CIRCLE, PISTON PIN 1.0*19	活塞銷止動環	2	
32	97201-142720	WASHER, PLATE 14.3*27.1*2	平面墊圈	1	



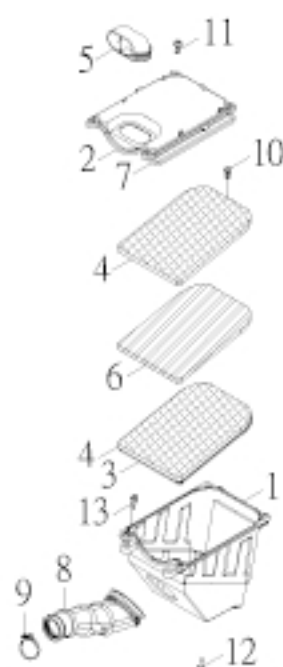
NO. 項目	PARTS NO. 零件號碼	PARTS NAME 零件名稱	Q'TY 用量	NOTE 備註
1	13001-JOW-00	WATER PUMP COMP	1	水泵總成
2	13011-JOW-00	WATER PUMP HULL	1	水泵本體
3	13012-JOW-00	WATER PUMP COVER	1	水泵蓋
4	13018-JOW-00	WATER SEAL A	1	水封A
5	13021-JOW-00	WATER PUMP SHAFT	1	水泵軸
6	13023-JOW-00	WATER SEAL B	1	水封B
7	13024-JOW-00	FAN	1	水泵葉輪
8	13051-JOW-00	WASHER, PUMP COVER	1	水泵蓋墊片
9	93110-12205	OIL SEAL 12*20*5	1	油封
10	93210-28315	O-RING 2.8*31.5	1	護油圈
11	93320-102608	BALL BEARING 6000/P6	1	滾珠軸承
12	93320-122406ZZ	BALL BEARING 6901ZZ/P6	1	滾珠軸承
13	94410-08014	PIN, DOWEL 8*14	2	定位銷
14	96411-06010-R	BOLT, FLANGE	1	凸緣螺栓
15	96411-06025-R	BOLT, FLANGE	2	凸緣螺栓
16	96411-06055-R	BOLT, FLANGE	2	凸緣螺栓
17	97012-26011-K	CIRCLIP RTW-26	1	C形內扣環
18	97230-061010	WASHER, COPPER 6.3*10.2*1	1	銅墊圈



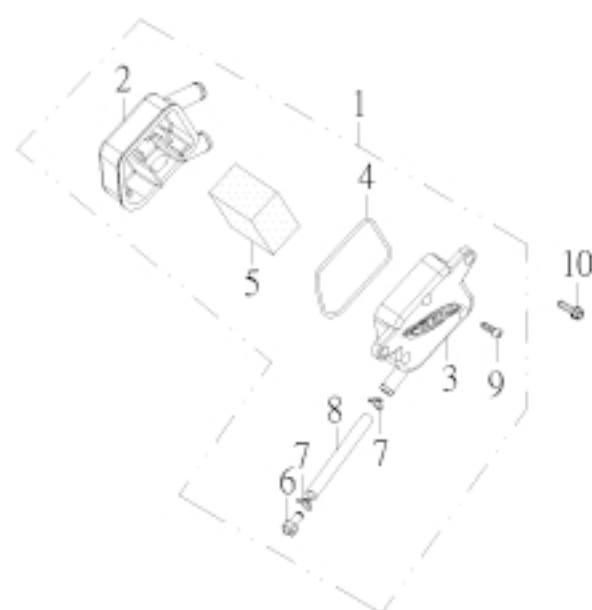
NO. 項目	PARTS NO. 零件號碼	PARTS NAME 零件名稱		Q'TY 用量	NOTE 備註
1	13100-JOW-00	PUMP ASS'Y, OIL	機油泵總成	1	
2	13111-JOW-00	BODY, OIL PUMP	機油泵本體	1	
3	13112-JOW-00	COVER, OIL PUMP GEAR	機油泵齒輪蓋	1	
4	13116-JOW-00	PLANE OIL PUMP	平板	1	
5	13121-JOW-00	SHAFT, OIL PUMP	機油泵齒輪軸	1	
6	13124-JOW-00	SPROCKET, OIL PUMP DRIVEN 25T	機油泵驅動齒輪	1	
7	13131-JOW-00	CHAIN, OIL PUMP 6.35*46	機油泵驅動鏈條	1	
8	13141-JOW-00	ROTOR, OIL PUMP INNER	機油泵內轉子	1	
9	13142-JOW-00	ROTOR, OIL PUMP OUTER	機油泵外轉子	1	
10	94510-40007	PIN, DOWEL Ø4*6.5	滾針	1	
11	96310-03008-C	SCREW, PAN HEAD	十字孔頭螺絲	1	
12	96411-06012-C	BOLT, FLANGE	凸緣螺栓	2	
13	96411-06028-B	BOLT, FLANGE	凸緣螺栓	2	
14	97010-10010-K	CIRCLIP 10*1	C形扣環	1	



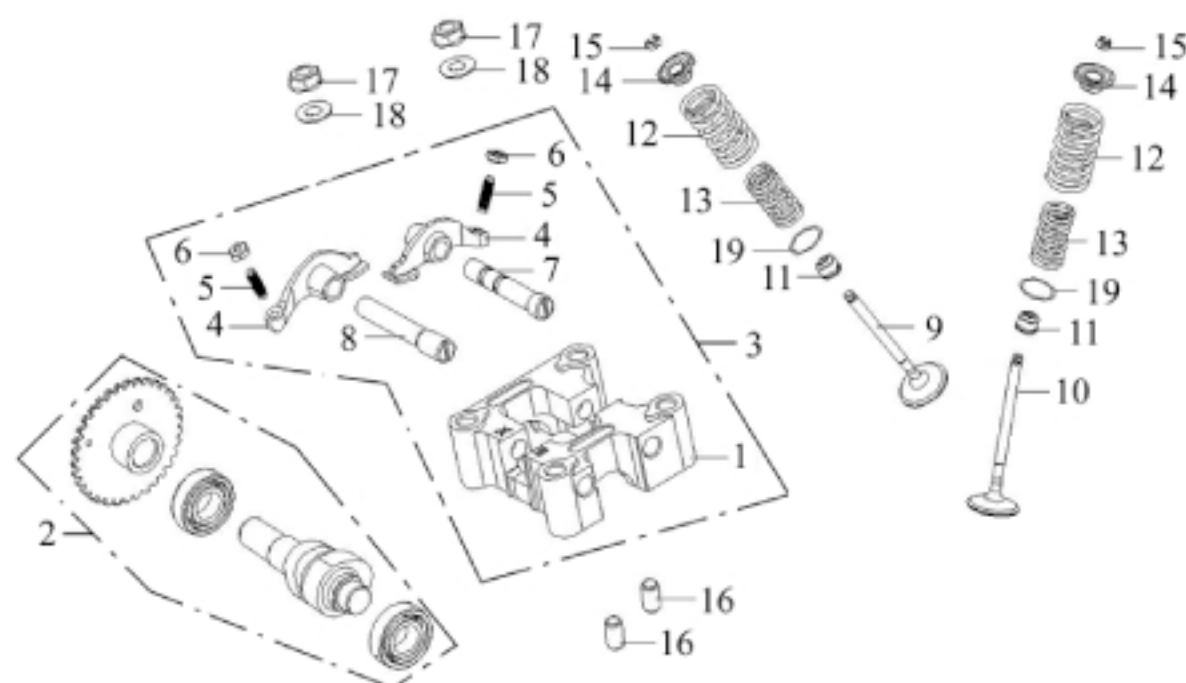
NO. 項目	PARTS NO. 零件號碼	PARTS NAME 零件名稱		QTY 用量	NOTE 備註
1	13201-JOW-00	CARBURETOR ASS'Y PTG-017	化油器總成	1	
2	13240-RAM-01	JET, MAIN #102	主噴口	1	
3	13242-RAM-00	JET, GUIDE #35	引導噴口	1	
4	13555-JOW-00	MANIFOLD, INTAKE	進氣歧管	1	
5	90210-08007	CLIP	管夾	1	
6	90310-42700	HOSE, VALUUM	負壓管	1	
7	93210-24290	O-RING 2.4*29	護油圈	1	
8	93210-30335	O-RING 3*33.5	護油圈	1	
9	94717-06036-C	BOLT, STUD 6*37	雙頭螺栓	2	
10	95401-061006-C	NUT, FLANGE	凸緣螺帽	2	



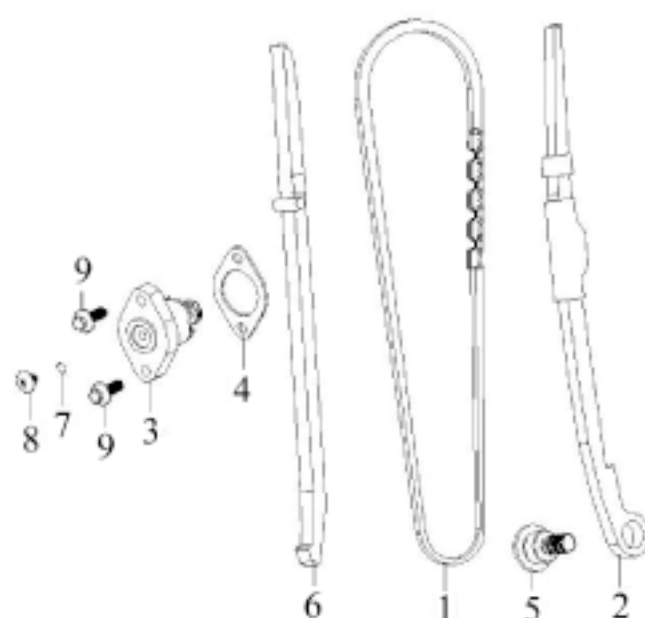
NO. 項目	PARTS NO. 零件號碼	PARTS NAME 零件名稱	QTY 用量	NOTE 備註
1	13411-CFS-00	CASE, AIR CLEANER	1	空氣濾清器箱
2	13412-JOW-00	CAP, CLEANER CASE	1	空氣濾清器箱蓋
3	13432-RAM-00	SEAL, ELEMENT	1	濾網固定板封圈
4	13433-RAM-00	PLATE, ELEMENT SET	2	濾清網固定板
5	13437-CRS-00	DUCT	1	防塵管
6	13451-RAM-00	ELEMENT, AIR CLEANER	1	空氣濾清網
7	13452-RAM-00	SEAL, AIR CLEANER COVER	1	濾清箱封圈
8	13453-JOW-00	JOINT, AIR CLEANER	1	濾清箱接頭
9	90260-80046	CLAMP, HOSE	1	連接管管夾
10	96110-43018-K	SCREW, TAPPING	8	自攻螺絲
11	96313-06020-K	SCREW, PAN HEAD WITH WASHER	4	十字孔頭螺絲附墊圈
12	96318-06012-G	SCREW, PAN HEAD	1	十字孔頭螺絲
13	96414-06020-B	BOLT, FLANGE	4	凸緣螺栓



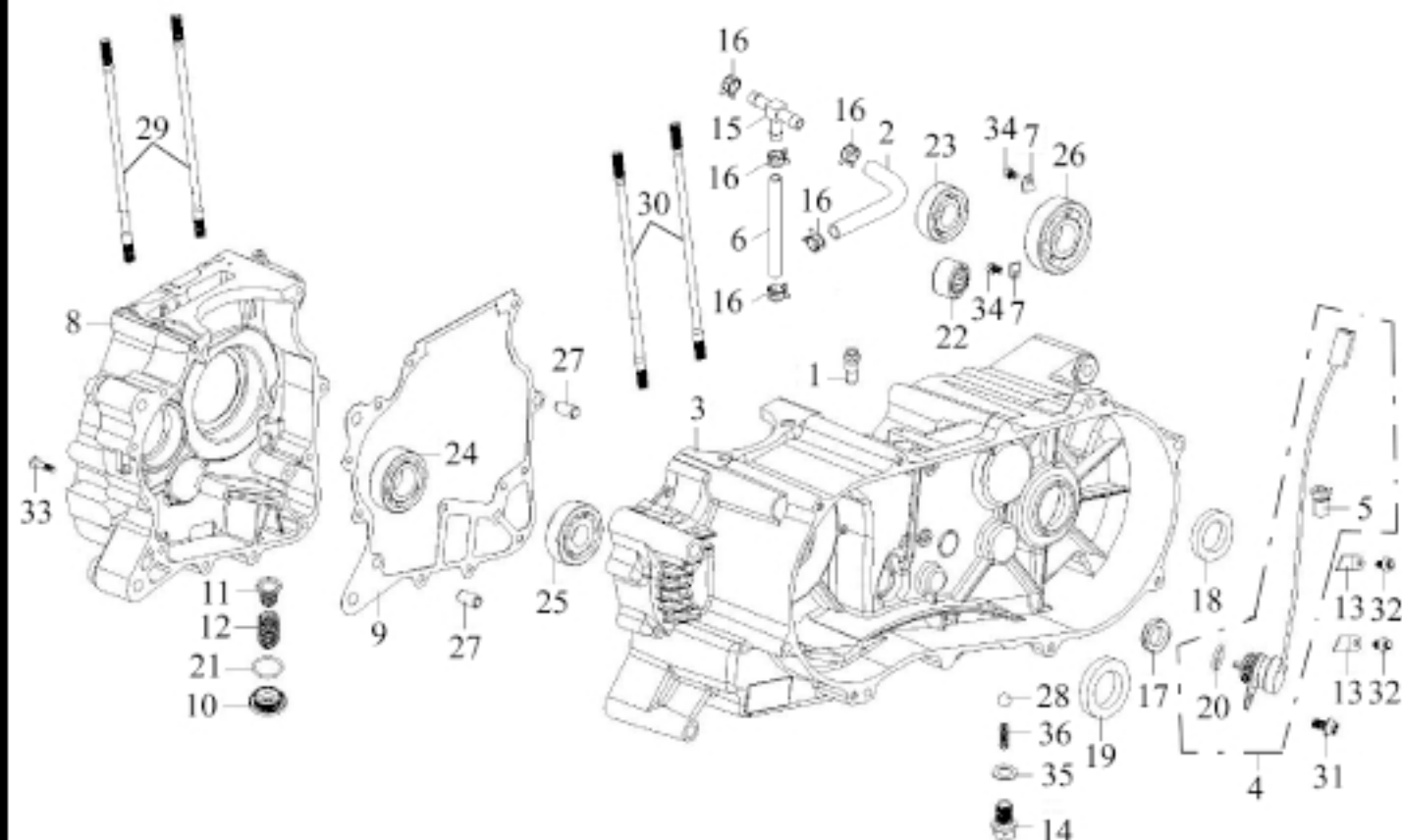
NO. 項目	PARTS NO. 零件號碼	PARTS NAME 零件名稱		Q'TY 用量	NOTE 備註
1	13420-JOW-00	OIL CATCH ASS'Y	集油室總成	1	
2	13421-JOW-00	BOX OIL CATCH	集油室箱	1	
3	13422-JOW-00	COVER OIL CATCH	集油室蓋	1	
4	13423-JOW-00	SEAL OIL CATCH	集油室封圈	1	
5	13427-JOW-00	FILTER OIL CATCH	集油濾清海綿	1	
6	13491-CRS-00	PLUG BREATHER TUBE	集油管塞	1	
7	90210-12012	CLIP	管夾	2	
8	90311-80120310	TUBE VINYL	集油管	1	
9	96110-31224-K	SCREW, TAPPING	自攻螺絲	3	
10	96414-06016-B	BOLT, FLANGE	凸緣螺栓	2	



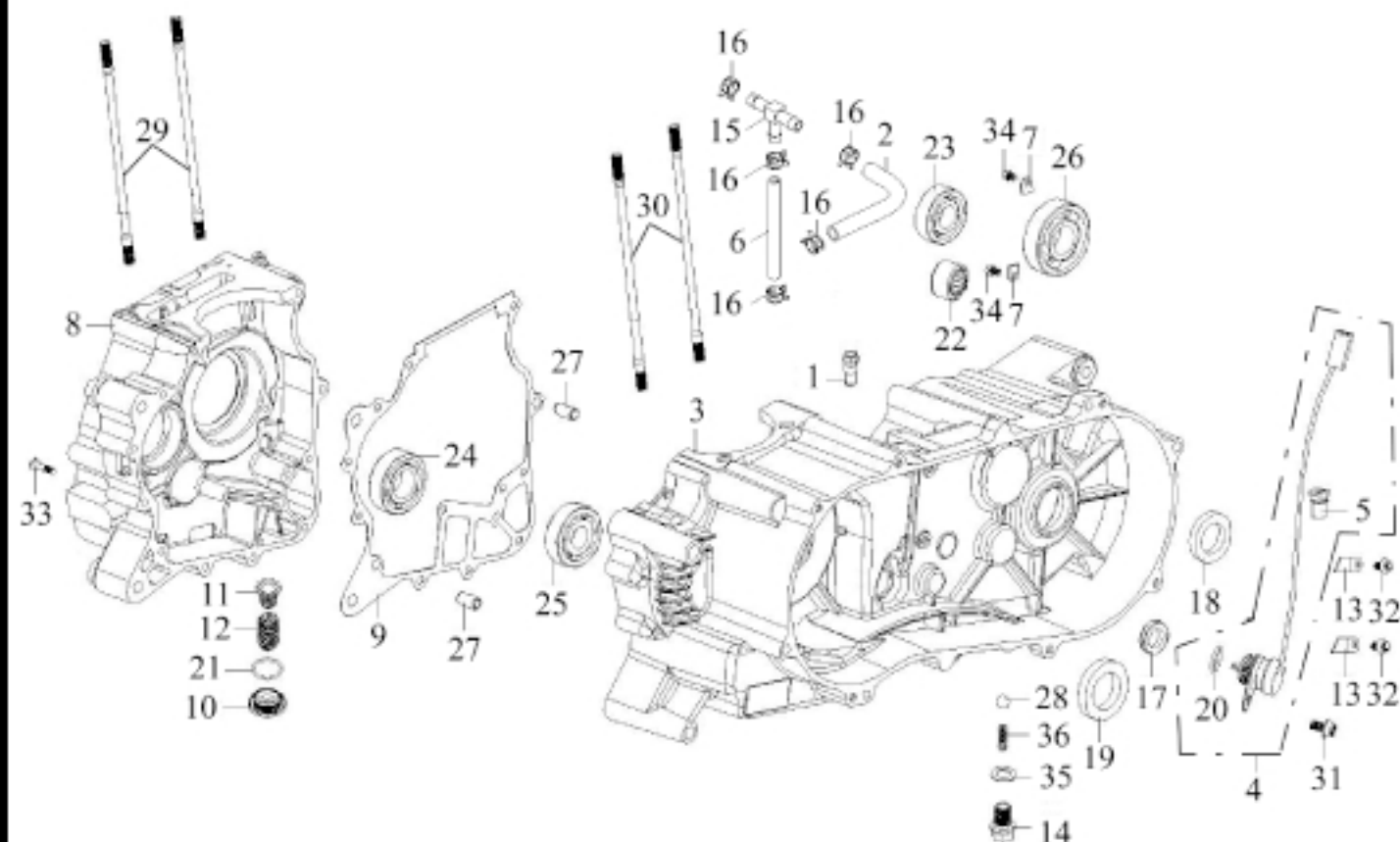
NO. 項目	PARTS NO. 零件號碼	PARTS NAME 零件名稱		QTY 用量	NOTE 備註
1	11131-JOW-00	HOLDER, CAMSHAFT	凸輪軸固定座	1	
2	14110-JOW-00	CAMSHAFT COMP 34T	凸輪軸整體	1	
3	14430-JOW-00	HOLDER COMP, ROCKER ARM	搖臂座組	1	
4	14431-JOW-00	ARM, VALVE ROCKER	門閥搖臂	2	
5	14436-CBT-00	SCREW, TAPPET ADJUSTING	挺桿調整螺絲	2	
6	14437-CBT-00	NUT, TAPPET ADJUSTING	挺桿調整螺帽	2	
7	14450-JOW-00	SHAFT, IN ROCKER ARM	進氣閥搖臂軸	1	
8	14452-JOW-00	SHAFT, EX ROCKER ARM	排氣閥搖臂軸	1	
9	14711-JOW-00	VALVE, IN	進氣閥門	1	
10	14721-JOW-00	VALVE, EX	排氣閥門	1	
11	14731-CBT-00	SEAL, VALVE STEM	閥門徑封	2	
12	14751-JOW-00	SPRING, VALVE OUTER 2.5*22*41.5	閥門外彈簧	2	
13	14761-JOW-00	SPRING, VALVE INNER 1.9*16.2*31	閥門內彈簧	2	
14	14771-JOW-00	RETAINER, VALVE SPRING	閥門彈簧承盤	2	
15	14781-JOW-00	COTTER, VALVE	閥門鎖扣	4	
16	94410-10016	PIN, DOWEL 10*16	定位銷	2	
17	95401-081208-C	NUT, FLANGE	凸緣螺帽	4	
18	97201-081822-B	WASHER, PLATE 8.6*17.8*2.2	平面墊圈	4	
19	97201-162308	SEAT, VALVE SPRING OUTER 16.6*23*0.8	彈簧座	2	



NO. 項目	PARTS NO. 零件號碼	PARTS NAME 零件名稱		Q'TY 用量	NOTE 備註
1	14501-JOW-00	CHAIN, CAM 98L	凸輪軸內鏈條	1	
2	14510-JOW-00	TENSIONER, CAM CHAIN	鏈條拉力桿	1	
3	14520-JOW-00	LIFTER ASS'Y, TENSIONER	鏈條調整器	1	
4	14523-JOW-00	GASKET, TENSIONER LIFTER	鏈條調整器墊片	1	
5	14531-JOW-00	PIVOT, CAM CHAIN TENSIONER	拉力桿螺絲	1	
6	14560-JOW-00	GUIDE COMP, CAM CHAIN	鏈條導件	1	
7	93210-15095	O-RING 1.5*9.5	護油圈	1	
8	96316-06006-R	SCREW, PAN HEAD	十字孔頭螺絲	1	
9	96411-06022-R	BOLT, FLANGE	凸緣螺栓	2	

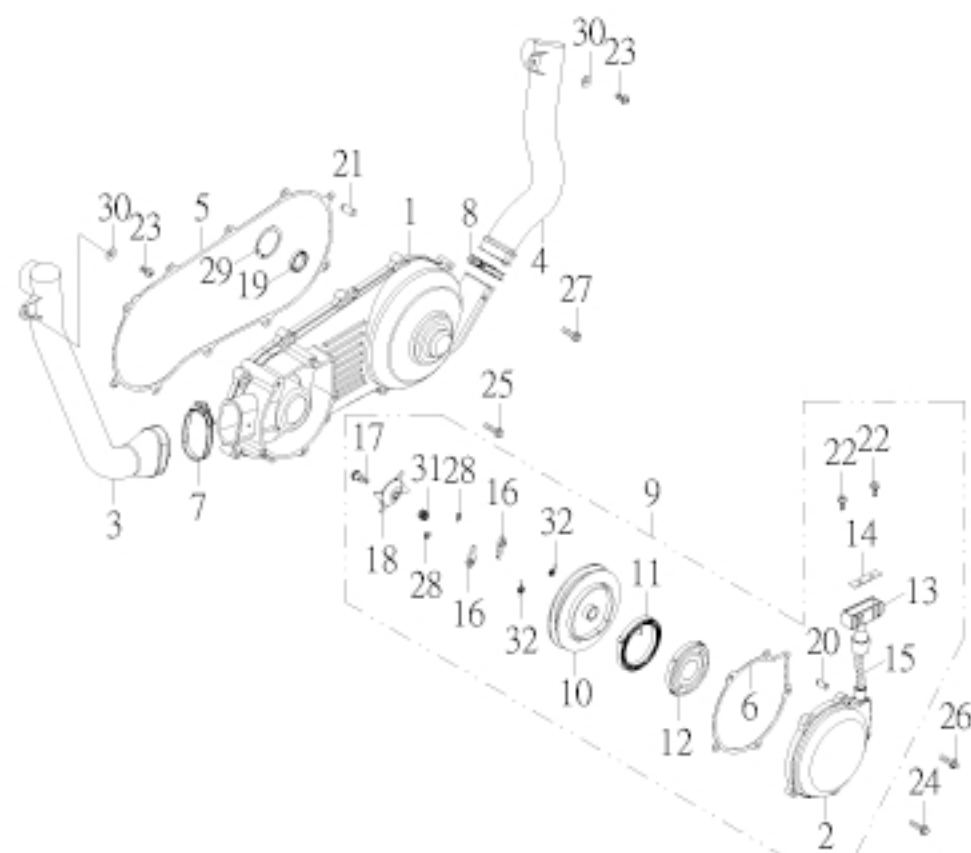


NO. 項目	PARTS NO. 零件號碼	PARTS NAME 零件名稱	QTY 用量	NOTE 備註
1	11146-JOW-00	BREATHER	1	通氣管接頭
2	13424-JOW-00	BREATHER TUBE	1	集油室通氣管
3	15111-JOW-00	CRANKCASE, LEFT	1	左曲軸箱
4	15130-JOW-00	SELECTOR SWITCH	1	檔位開關組
5	15136-JOW-00	GROMMET	1	檔位開關密封套
6	15172-JOW-00	HOSE, BREATH	1	變速箱蓋通氣管
7	15174-JOW-00	PLATE, BEARING	2	軸承壓板
8	15211-JOW-00	CRANKCASE, RIGHT	1	右曲軸箱
9	15251-JOW-00	GASKET, CRANKCASE	1	曲軸箱墊片
10	15533-JOW-00	CAP, TAPPET ADJUSTING HOLE	1	濾油網螺帽蓋
11	15536-JOW-00	SCREEN, OIL FILTER	1	濾油網
12	15538-JOW-00	SPRING, OIL FILTER SCREEN	1	濾油網彈簧
13	15541-CHP-00	CLAMPER, WIRE HARNESS	2	配線固定板
14	24228-JOW-00	BOLT 14*21	1	換檔定位螺栓
15	43535-JOW-00	JOINTER, THREE WAY	1	三向管接頭
16	90220-10138-B	CLIP 10*13.8	5	板型管夾
17	93110-14225	OIL SEAL TC 14*22*5	1	油封
18	93110-25408	OIL SEAL TC 25*40*8	1	油封
19	93110-27427	OIL SEAL TC 27*42*7	1	油封
20	93210-24176	O-RING 2.4*17.6	1	護油圈
21	93210-30305	O-RING 3*30.5	1	護油圈
22	93310-2026160	NEEDLE BEARING (HK 2016)	1	滾針軸承

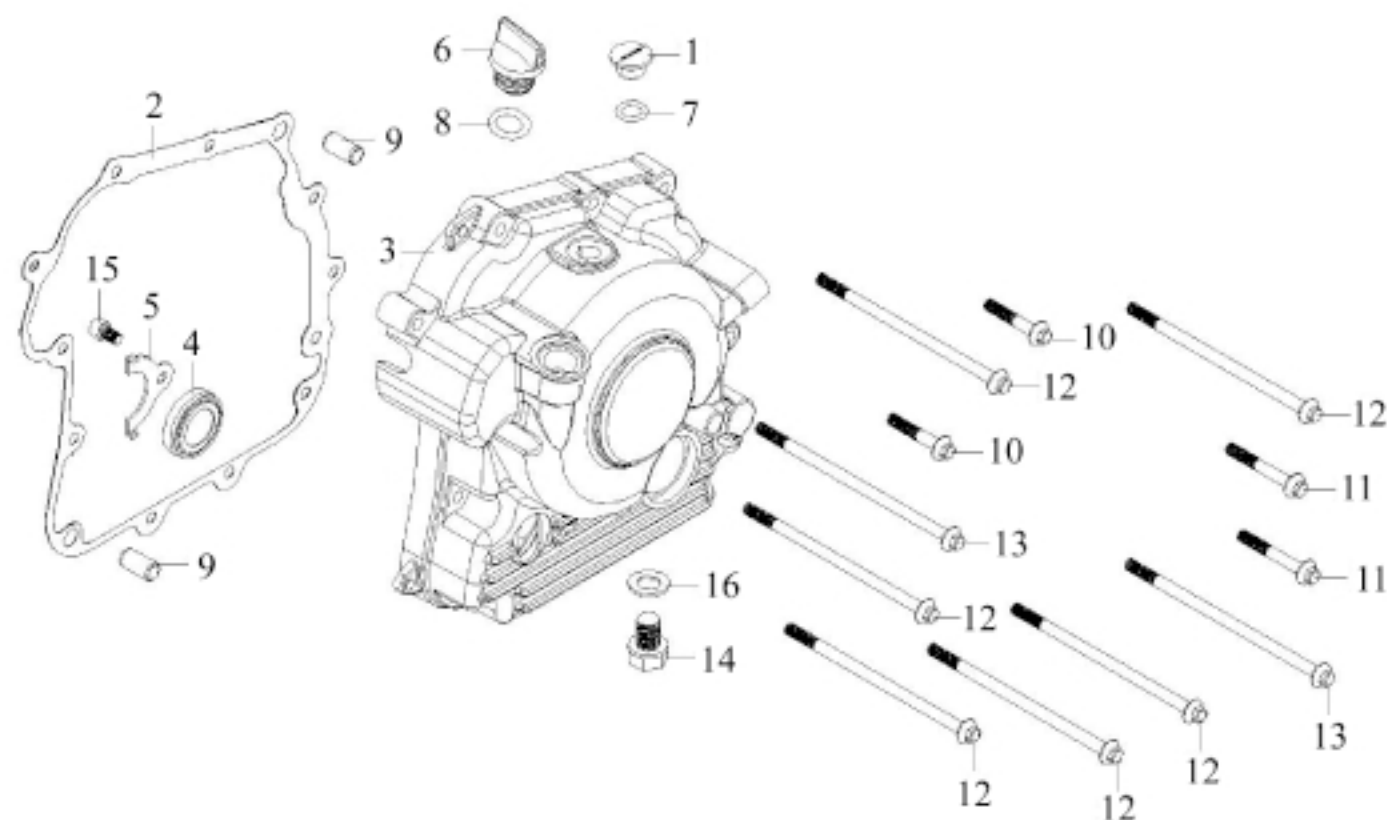


NO. 項目	PARTS NO. 零件號碼	PARTS NAME 零件名稱	QTY 用量	NOTE 備註
23	93320-204714	BALL BEARING 6204/P5	1	滾珠軸承
24	93320-2052153	BALL BEARING 6304/C3	1	滾珠軸承
25	93320-2552153	BALL BEARING 6205/C3	1	滾珠軸承
26	93320-256217	BALL BEARING 6305/P53	1	滾珠軸承
27	94410-10016	PIN, DOWEL 10*16	2	定位銷
28	94520-09500	BALL Ø9.5	1	鋼珠
29	94717-08210-C	BOLT, STUD	2	雙頭螺栓
30	94717-08218-C	BOLT, STUD	2	雙頭螺栓
31	96411-06010-R	BOLT, FLANGE	1	凸緣螺栓
32	96411-06012-R	BOLT, FLANGE	2	凸緣螺栓
33	96411-06050-R	BOLT, FLANGE	4	凸緣螺栓
34	96510-06010-C	BOLT, SOCKET	2	六角承窩螺栓
35	97230-142310	WASHER, COPPER 14.1*22.6*1	1	銅墊圈
36	97501-1008024	SPRING, COMPRESSION 1*7.5*23.5	1	壓縮彈簧

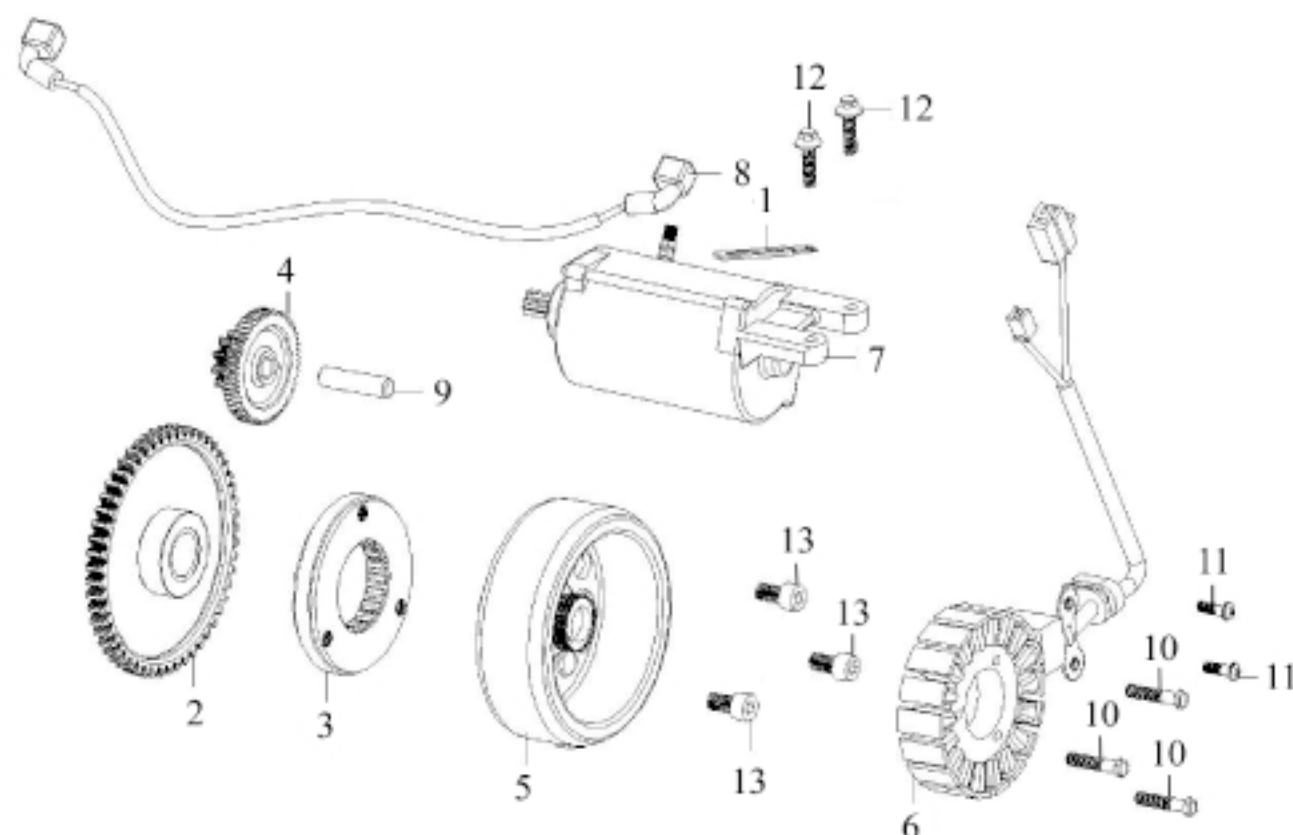
NO.	PARTS NO.	PARTS NAME	Q'TY	NOTE
項目	零件號碼	零件名稱	用量	備註
1	15311-JOW-00	COVER, GEARBOX	1	變速箱蓋
2	15351-JOW-00	GASKET, GEARBOX COVER	1	變速箱蓋墊片
3	32191-JOW-00	DRIVE CHAIN CASE	1	鏈條蓋
4	32194-JOW-00	BRACKET, CHAIN CASE	1	鏈條蓋支架
5	45835-JOW-00	GEAR, SPEEDOMETER 9T	1	速度表齒輪
6	45836-JOW-00	CONNECT, SPEEDOMETER CABLE	1	速度錶鋼索接頭
7	93110-06147	OIL SEAL	1	油封
8	93110-14287	OIL SEAL TC 14*28*7	1	油封
9	94410-10016	PIN, DOWEL 10*16	2	定位銷
10	96108-51616-K	SCREW, TAPPING	2	自攻螺絲
11	96411-06016-R	BOLT, FLANGE	3	凸緣螺栓
12	96414-08035-C	BOLT, FLANGE	7	凸緣螺栓
13	96414-08040-C	BOLT, FLANGE	2	凸緣螺栓
14	96414-12015-C	BOLT, FLANGE	1	凸緣螺栓
15	96416-08012-C	BOLT, FLANGE	1	凸緣螺栓
16	97201-051010	WASHER, PLATE	1	速度表齒輪襯片
17	97201-061410-C	WASHER, PLATE 6.7*14*1	1	平面墊圈
18	97201-202610-C	WASHER, PLATE 20.2*26*1	1	平面墊圈
19	97231-081620	WASHER, ALUMINUM 8.2*16*2	1	鋁墊圈
20	97231-122118	WASHER, ALUMINUM 12.5*20.6*1.8	1	鋁墊圈



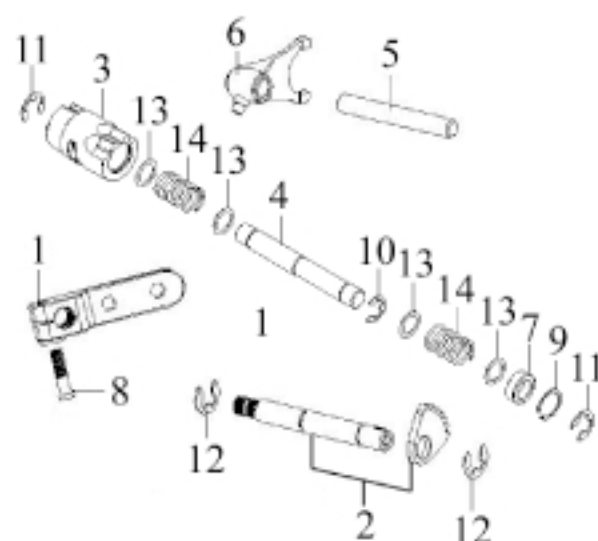
NO. 項目	PARTS NO. 零件號碼	PARTS NAME 零件名稱	Q'TY 用量	NOTE 備註
1	15411-JOW-00	COVER, CRANKCASE	1	機箱蓋
2	15432-JOW-00	COVER, RE-COILED STARTER	1	啓動器蓋
3	15433-JOW-00	PIPE, VENTILATION IN	1	機箱蓋進氣導管
4	15434-JOW-00	PIPE, VENTILATION EX	1	機箱蓋排氣導管
5	15481-JOW-00	GASKET, CRANKCASE COVER	1	機箱蓋墊片
6	15483-JOW-00	GASKET, COVER	1	啓動器蓋墊片
7	15491-GAT-00	CLAMP, HOSE	1	導管束帶
8	15494-JOW-00	CLAMP, HOSE	1	導管束帶
9	22600-JOW-00	RE-COILED STARTER ASS'Y	1	手拉啓動器組
10	22603-JOW-00	CORD WHEEL SET	1	繩輪組件
11	22605-JOW-00	SPRING	1	發條彈簧
12	22606-JOW-00	SPRING TRAY	1	發條盤
13	22621-JOW-00	PULLER	1	手柄
14	22623-JOW-00	CAP, PULLER	1	手柄蓋
15	22626-JOW-00	CORD, RE-COILED STARTER	1	起動繩
16	22630-JOW-00	CAM, STARTER	2	啓動爪
17	22636-JOW-00	SCREW, FIXING 6*22.5	1	定位螺絲
18	22638-JOW-00	DIRECTION TRAY	1	導向盤
19	93320-254712BB	BALL BEARING 6005 2RZ	1	滾珠軸承
20	94410-08014	PIN, DOWEL	2	定位銷
21	94410-10016	PIN, DOWEL 10*16	2	定位銷
22	96110-41516-B	SCREW, TAPPING	2	自攻螺絲



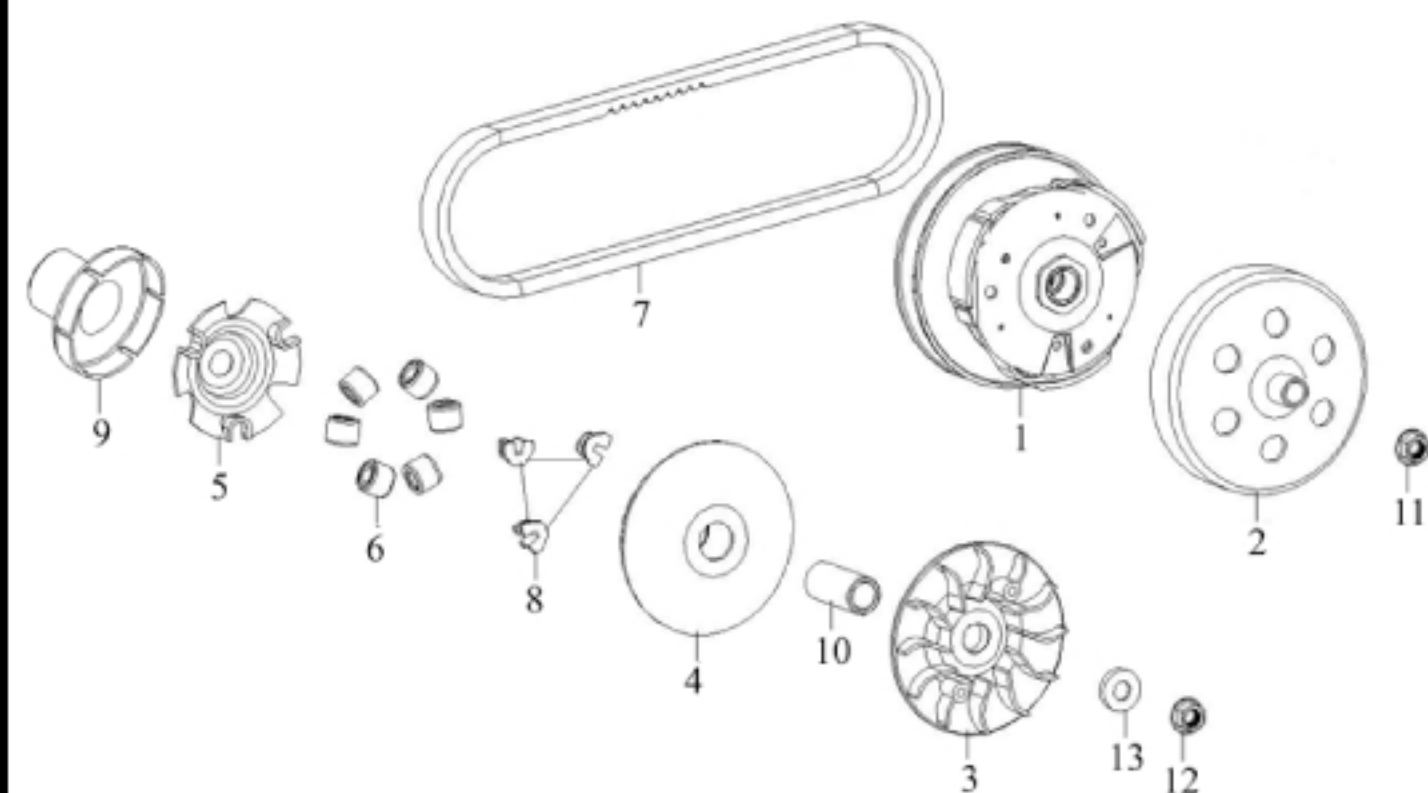
NO. 項目	PARTS NO. 零件號碼	PARTS NAME 零件名稱		Q'TY 用量	NOTE 備註
1	12655-JOW-00	CAP, A.C.G 14*7	A.C.G 蓋	1	
2	15221-JOW-00	COVER, R CRANKCASE COMP	右曲軸箱蓋墊片	1	
3	15511-JOW-00	GASKET, R CRANKCASE COVER	右曲軸箱蓋	1	
4	15551-JOW-00	MIRROR, OIL	油鏡組件	1	
5	15553-JOW-00	PLATE, MIRROR OIL	油鏡壓板	1	
6	15563-JOW-00	GAUGE, OIL LEVEL	量油尺	1	
7	93210-24140	O-RING 2.4*14	護油圈	1	
8	93210-35178	O-RING 3.55*17.8	護油圈	1	
9	94410-10016	PIN, DOWEL 10*16	定位銷	2	
10	96411-06035-R	BOLT, FLANGE	凸緣螺栓	2	
11	96411-06045-R	BOLT, FLANGE	凸緣螺栓	2	
12	96411-06125-R	BOLT, FLANGE	凸緣螺栓	6	
13	96411-06135-R	BOLT, FLANGE	凸緣螺栓	2	
14	96414-12015-C	BOLT, FLANGE	凸緣螺栓	1	
15	96510-06010-C	BOLT, SOCKET	六角承窩螺栓	1	
16	97231-122118	WASHER, ALUMINUM 12.5*20.6*1.8	鋁墊圈	1	



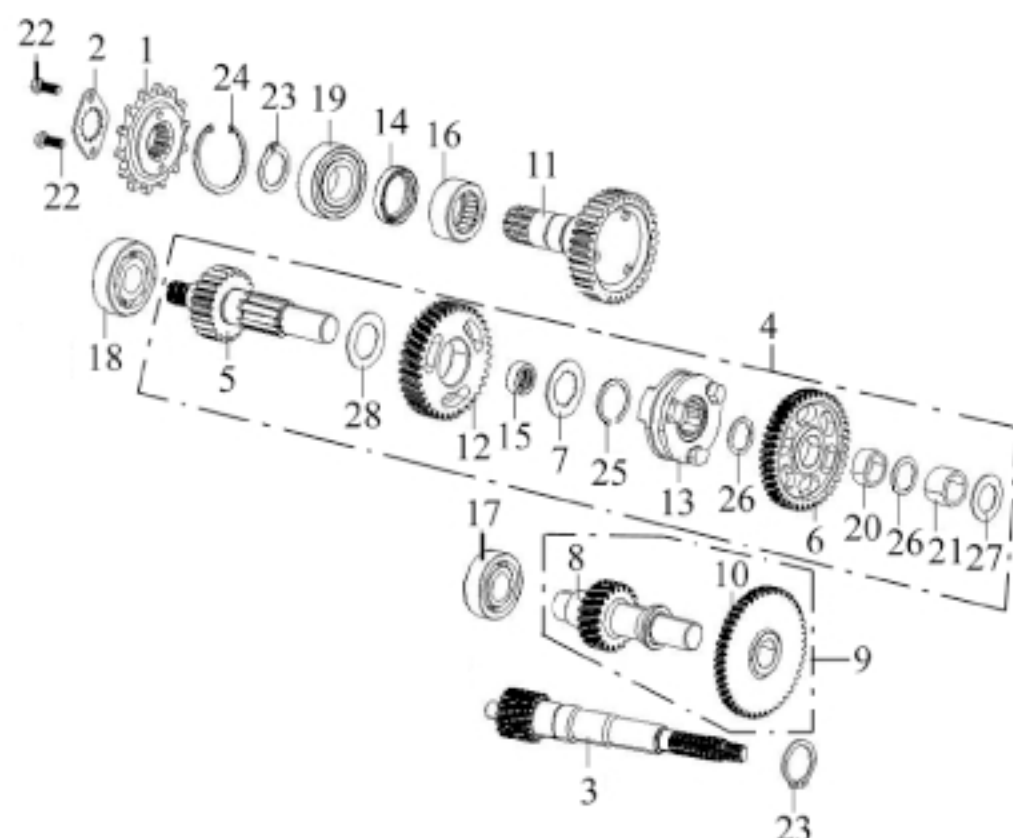
NO. 項目	PARTS NO. 零件號碼	PARTS NAME 零件名稱	Q'TY 用量	NOTE 備註
1	12638-JOW-00	FLODER	1	檔顯器導線夾
2	23524-JOW-00	GEAR COMP, STARTING CLUTCH 53	1	起動輪
3	23570-JOW-00	STARTING CLUTCH ASS'Y	1	起動離合器總成
4	23612-JOW-00	GEAR, IDLE 54/11T	1	惰齒輪
5	35550-JOW-00	FLYWHEEL COMP	1	轉子總成
6	35560-JOW-00	STATOR COMP	1	發電機座總成
7	35800-JOW-00	MOTOR ASS'Y, STARTER	1	起動馬達總成
8	35831-JOW-00	CABLE, STARTER MOTOR	1	起動馬達導線
9	94510-100040	SHAFT, IDLE GEAR 10*39.5	1	惰齒輪軸
10	96210-05028-C	BOLT, HEXAGON	3	六角螺栓
11	96310-05016-C	SCREW, PAN HEAD	2	十字孔頭螺絲
12	96411-06022-R	BOLT, FLANGE	2	凸緣螺栓
13	96510-08016-C	BOLT, SOCKET	3	六角承窩螺栓



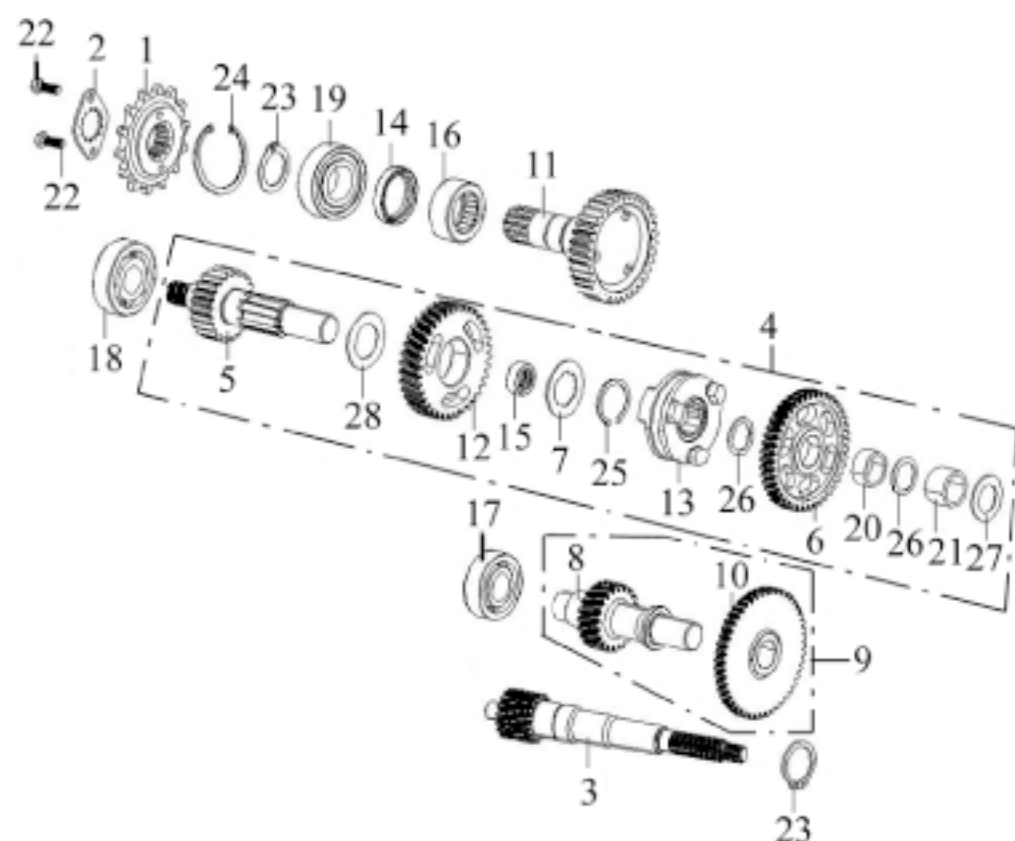
NO. 項目	PARTS NO. 零件號碼	PARTS NAME 零件名稱		Q'TY 用量	NOTE 備註
1	24206-JOW-00	SHIFT LEVER	變速拉桿	1	
2	24210-JOW-00	GEAR SHIFT LEVER LOWER	變速桿總成	1	
3	24220-JOW-01	DRUM, GEAR SHIFT	齒輪變速筒	1	
4	24221-JOW-00	SHAFT, GEAR SHIFT DRUM	齒輪變速筒軸	1	
5	24236-JOW-00	SHAFT, GEAR SHIFT FORK 12*94	變速叉樞軸	1	
6	24238-JOW-00	FORK, GEAR SHIFT	齒輪變速叉	1	
7	93510-142207	BUSH, GEAR SHIFT DRUM	齒輪變速筒襯套	1	
8	96210-06020-C	BOLT, HEXAGON	六角螺栓	1	
9	97010-22010-K	CIRCLIP	C形扣環	1	
10	97011-10010-K	CIRCLIP	E形扣環	1	
11	97011-12010-K	CIRCLIP	E形扣環	2	
12	97011-12012-K	CIRCLIP 12*1.2	E形扣環	2	
13	97201-142005	WASHER, PLATE 15.2*25.6*2.0	平面墊圈	4	
14	97501-2320025	SPRING, COMPRESSION	壓縮彈簧	2	



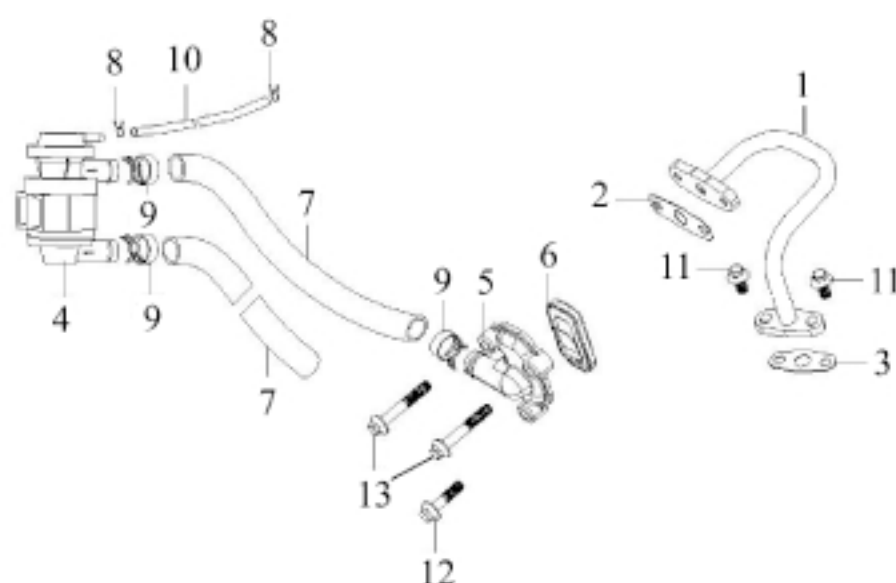
NO. 項目	PARTS NO. 零件號碼	PARTS NAME 零件名稱		QTY 用量	NOTE 備註
1	25602-JOW-00	PULLEY ASS'Y, DRIVEN	副槽輪總成	1	
2	25611-JOW-00	OUTER, CLUTCH	離合器殼整體	1	
3	25711-JOW-00	FACE, DRIVE	主固定槽輪	1	
4	25720-JOW-00	FACE COMP, MOVABLE DRIVE	主滑動槽輪整體	1	
5	25723-JOW-00	PLATE, RAMP	凸輪板	1	
6	25732-JOW-00	ROLLER SET, WEIGHT 25g	重錘滾子	6	
7	25741-JOW-00	BELT, DRIVE 893*24(*11)	皮帶	1	
8	25753-JOW-00	PIECE, SLIDE	滑件	3	
9	25757-JOW-00	CLUTCH, ONE-WAY	單向離合器	1	
10	93510-192763	BOSS, DRIVE FACE 19.1*27*62.8	主滑動槽輪襯套	1	
11	95401-121711-C	NUT, FLANGE	凸緣螺帽	1	
12	95401-141911-C	NUT, FLANGE	凸緣螺帽	1	
13	97201-142720	WASHER, PLATE 14.2*27*2	平面墊圈	1	



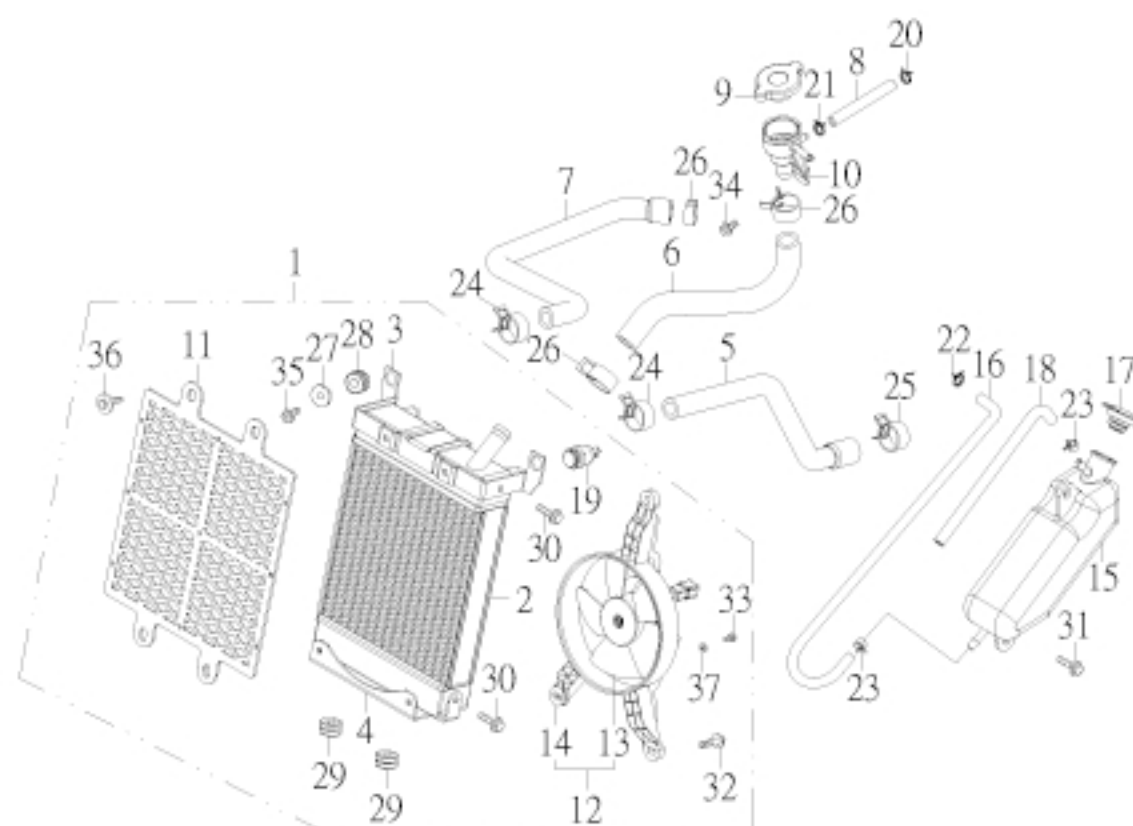
NO. 項目	PARTS NO. 零件號碼	PARTS NAME 零件名稱	QTY 用量	NOTE 備註
1	25711-JOW-00	SPROCKET DRIVE 13T	1	驅動鏈輪
2	25716-JOW-00	PLATE, FIXING	1	驅動鏈輪固定板
3	26111-JOW-00	GEAR, PRIMARY DRIVE 17T	1	主驅動軸
4	26410-JOW-00	MAIN AXLE COMP	1	惰輪軸總成
5	26411-JOW-00	GEAR, IDLE 23T/5T	1	惰輪軸
6	26412-JOW-00	GEAR, FORWARD 45T	1	前進齒輪
7	26413-JOW-00	WASHER, SPLINE 23.2/25.2*39.9*1.4	1	齒輪墊圈
8	26415-JOW-00	AXLE, IDLE GEAR 21T	1	倒檔惰齒輪軸
9	26415-JOW-00A	IDLE GEAR AXLE ASS'Y	1	倒檔惰齒輪軸總成
10	26416-JOW-00	IDLE GEAR, REVERSE 49T	1	倒檔惰齒輪
11	26420-JOW-00	DRIVE AXLE ASSEMBLY 36T	1	傳動軸總成
12	26426-JOW-00	GEAR, REVERSE 37T	1	倒檔齒輪
13	26430-JOW-00	CLUTCH, DOG	1	變檔鼓
14	93110-30407	OIL SEAL TC 30*40*7	1	油封
15	93310-2533160	NEEDLE BEARING NK25/16	1	滾針軸承
16	93310-3042170	NEEDLE BEARING NA-RNA4905	1	滾針軸承
17	93320-204714	BALL BEARING 6204/P53	1	滾珠軸承
18	93320-2052153	BALL BEARING 6304/C3P6	1	滾珠軸承
19	93320-255215BB	BALL BEARING 6205 2RZ	1	滾珠軸承
20	93510-202211	BOSS, DRIVE FACE 20*22*11.2	1	前進齒輪襯套
21	93510-202311-K	BOSS, DRIVE FACE 20*23*10.6	1	軸套
22	96210-06016-C	BOLT, HEXAGON	2	六角螺栓



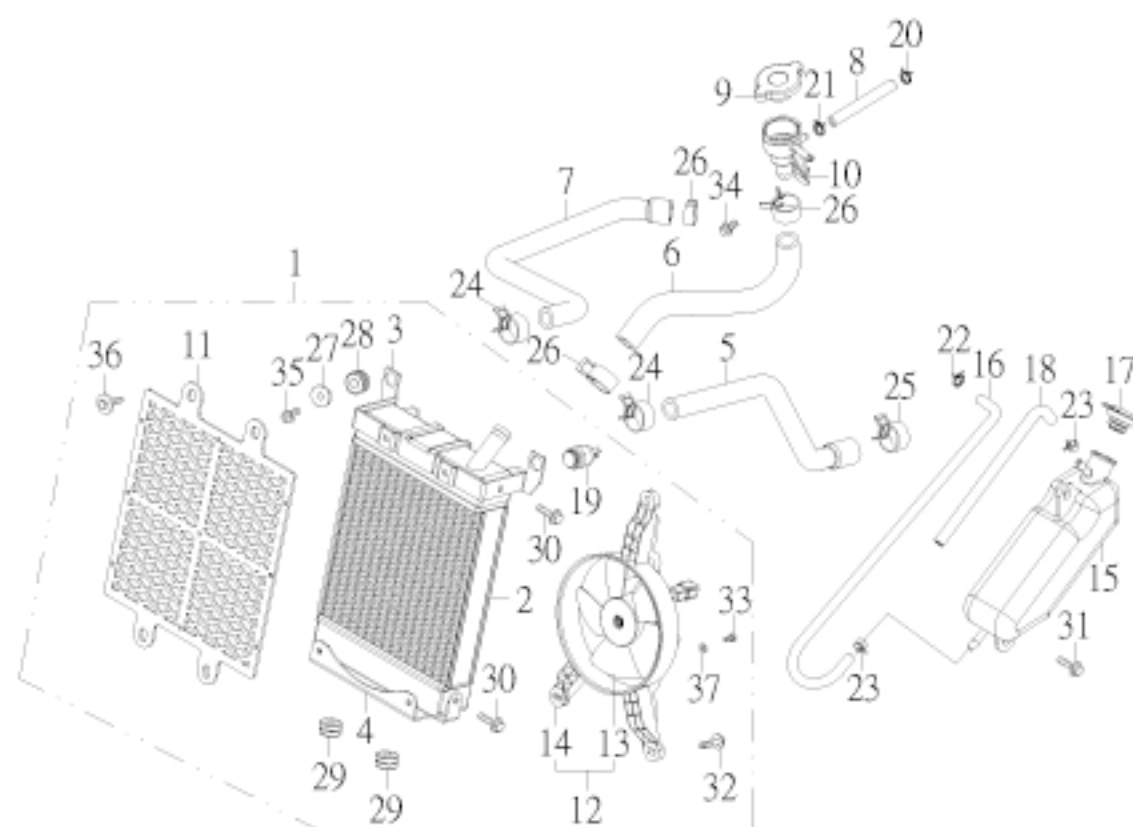
NO. 項目	PARTS NO. 零件號碼	PARTS NAME 零件名稱	Q'TY 用量	NOTE 備註
23	97010-25011-K	CIRCLIP 25*1.1	2	C形扣環
24	97012-52020-K	CIRCLIP 52*2	1	C形內扣環
25	97014-25012-K	CIRCLIP 25*1.2	1	C形扣環
26	97201-202710-K	WASHER, PLATE 20.2*26.9*1	2	止推墊片
27	97201-203310-K	WASHER, PLATE 20.2*32.9*1	1	平面墊圈
28	97201-254010-K	WASHER, PLATE 25.2*39.9*1	1	止推墊片



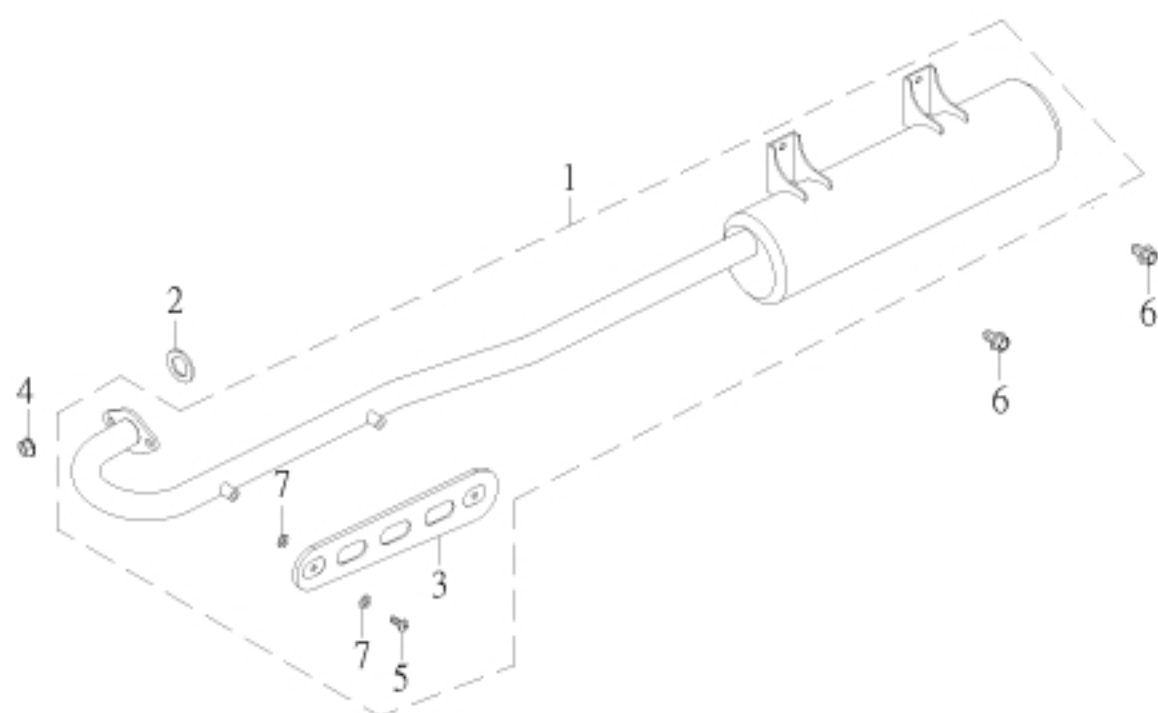
NO. 項目	PARTS NO. 零件號碼	PARTS NAME 零件名稱		Q'TY 用量	NOTE 備註
1	11126-JOW-00	PIPE, AIR INJECTION	二次空氣導管	1	
2	11128-JOW-00	GASKET, PIPE AIR INJECTION	二次空氣導管墊片上	1	
3	11129-JOW-00	GASKET, PIPE AIR INJECTION	二次空氣導管墊片下	1	
4	31681-JOW-00	AIR INJECTION, PULSE AIR	截止閥	1	
5	31683-JOW-00	VALVE, ONE WAY	單向閥蓋	1	
6	31684-JOW-00	CAP, VALVE	單向閥	1	
7	31688-JOW-00	HOSE, AIR INJECTION EX	截止閥輸出管	2	
8	90212-10074-C	CLIP 1*7.4	管夾	2	
9	90220-12178-B	CLIP 12*Ø17.8	板型管夾	3	
10	90310-42550	HOSE, VALUUM	截止閥負壓管	1	
11	96411-06018-R	BOLT, FLANGE	凸緣螺栓	2	
12	96411-06025-R	BOLT, FLANGE	凸緣螺栓	1	
13	96411-06040-R	BOLT, FLANGE	凸緣螺栓	2	



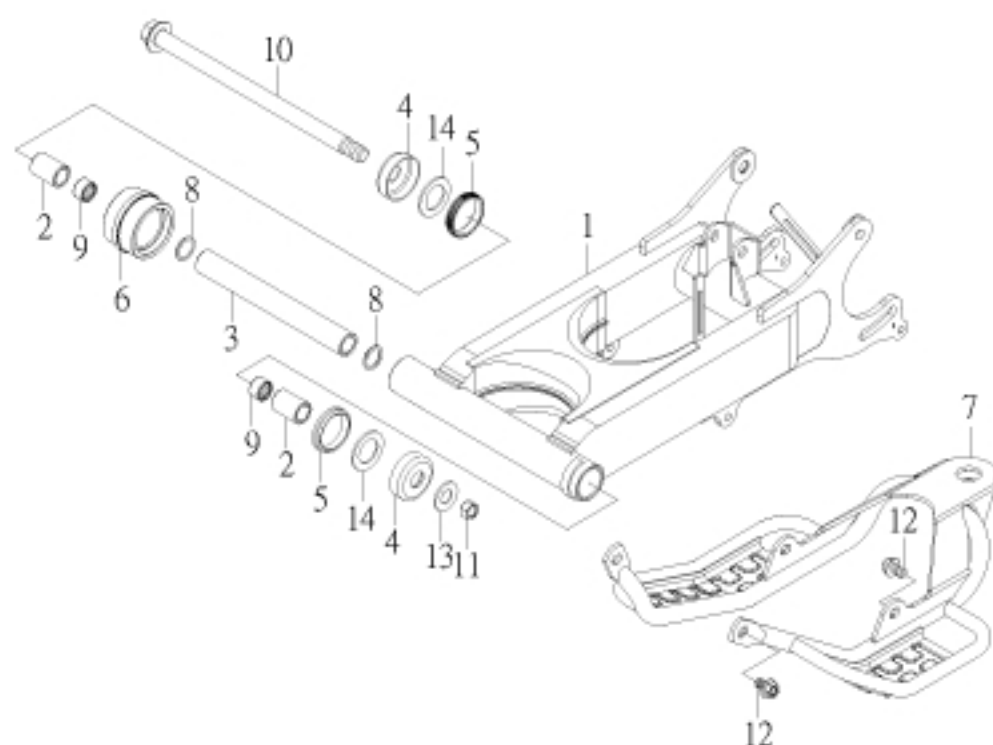
NO. 項目	PARTS NO. 零件號碼	PARTS NAME 零件名稱		QTY 用量	NOTE 備註
1	43400-JOW-00	RADIATOR ASS'Y	水箱總成	1	
2	43410-JOW-00	RADIATOR	水箱	1	
3	43411-JOW-00	BRACKET, RADIATOR	水箱上支架	1	
4	43416-JOW-00	BRACKET, RADIATOR	水箱下支架	1	
5	43420-CEW-00	HOSE, RADIATOR IN	水箱進水管	1	
6	43423-JOW-00	HOSE, RADIATOR CAP	加水口水管	1	
7	43425-CEW-00	HOSE, WATER PUMP IN	水泵進水管	1	
8	43428-JOW-00	HOSE, WATER CIRCULATE	冷水循環管	1	
9	43430-JOW-00	RADIATOR CAP	水箱蓋	1	
10	43435-JOW-00	HULL, RADIATOR CAP	水箱蓋體	1	
11	43440-JOW-00	RADIATOR DEFEND	水箱護罩	1	
12	43450-CEE-00	FAN MOTOR ASS'Y	風扇馬達總成	1	
13	43451-JOW-00	FAN MOTOR COMP	風扇馬達組	1	
14	43456-JOW-00	BRACKET, FAN	風扇支架		
15	43460-JOW-00	WATER TANK	副水箱	1	
16	43463-CEW-00	HOSE 1, WATER TANK	副水箱溢流管	1	
17	43466-JOW-00	CAP, WATER TANK	副水箱蓋	1	
18	43468-CEE-00	HOSE 2, WATER TANK	副水箱通氣管	1	
19	62750-CEE-00	FAN MOTOR SWITCH	風扇開關	1	
20	90212-10074-C	CLIP 1*7.4	管夾	1	
21	90212-12085-C	CLIP 1.2*8.5	管夾	1	
22	90212-12095-C	CLIP 1.2*9.5	管夾	1	



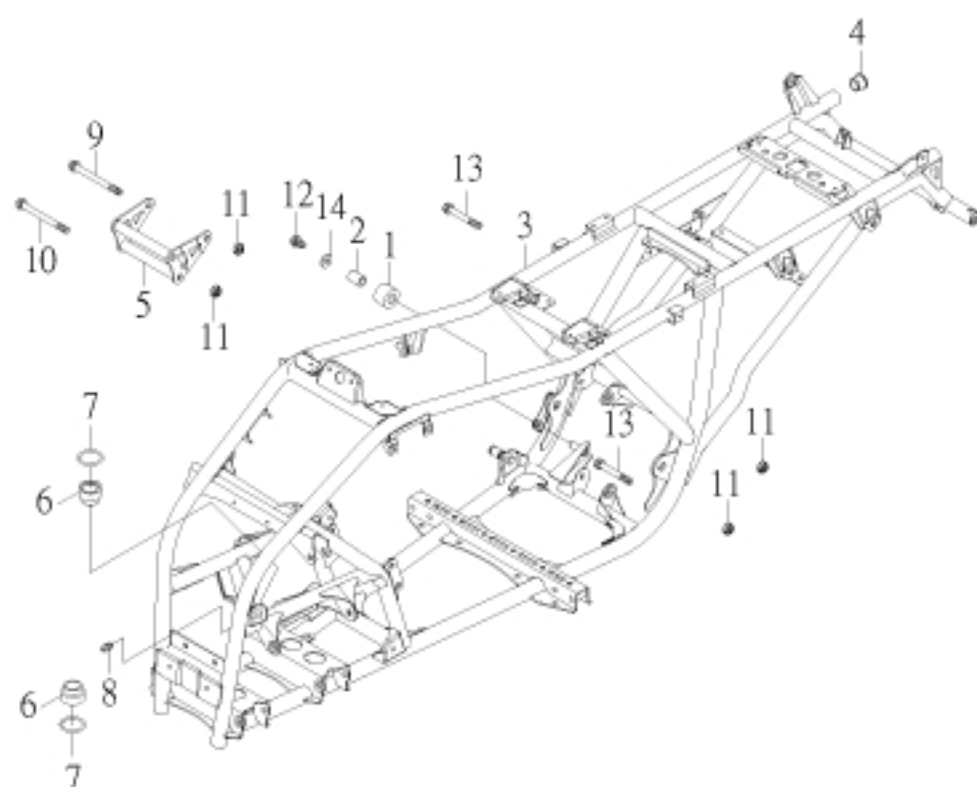
NO. 項目	PARTS NO. 零件號碼	PARTS NAME 零件名稱	QTY 用量	NOTE 備註
23	90220-08100-B	CLIP 8*10	2	板型管夾
24	90220-12198-B	CLIP 12*19.8	2	板型管夾
25	90220-12217-B	CLIP 12*21.7	1	板型管夾
26	90220-12230-B	CLIP 12*23	3	板型管夾
27	93530-060911-K	COLLAR	2	水箱軸環
28	93580-092212	GROMMET	2	水箱套環
29	93580-102212	GROMMET	2	牌照板套環
30	96218-06012-C	BOLT, HEXAGON	4	六角螺栓
31	96218-06016-B	BOLT, HEXAGON	2	六角螺栓
32	96218-06020-C	BOLT, HEXAGON	3	六角螺栓
33	96310-04010-B	SCREW, PAN HEAD	2	十字孔頭螺絲
34	96414-06012-B	BOLT, FLANGE	1	凸緣螺栓
35	96414-06022-B	BOLT, FLANGE	2	凸緣螺栓
36	96616-05012-K	BOLT, HEXAGON WITH WASHER	4	六角十字穴螺栓附墊圈
37	97201-040908-B	WASHER, PLATE 4.2*8.8*0.8	3	平面墊圈



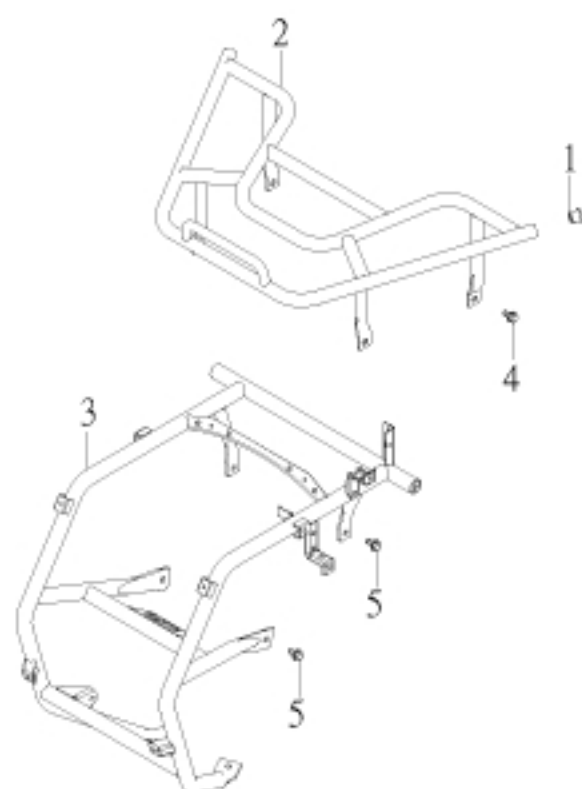
NO. 項目	PARTS NO. 零件號碼	PARTS NAME 零件名稱		Q'TY 用量	NOTE 備註
1	31610-JOW-00	EXHAUST MUFFLER ASS'Y	排氣管總成	1	
2	31613-JOW-00	GASKET, EXHAUST PIPE (29*36*4.8)	排氣管墊片	1	
3	31618-RAM-00	PROTECTOR, EXHAUST	排氣管護罩	1	
4	95401-081208-B	NUT, FLANGE	凸緣螺帽	2	
5	96316-06010-K	SCREW, PAN HEAD	十字孔頭螺絲	2	
6	96414-08016-B	BOLT, FLANGE	凸緣螺栓	2	
7	97210-061215	WASHER, PLATE	石棉墊圈	4	



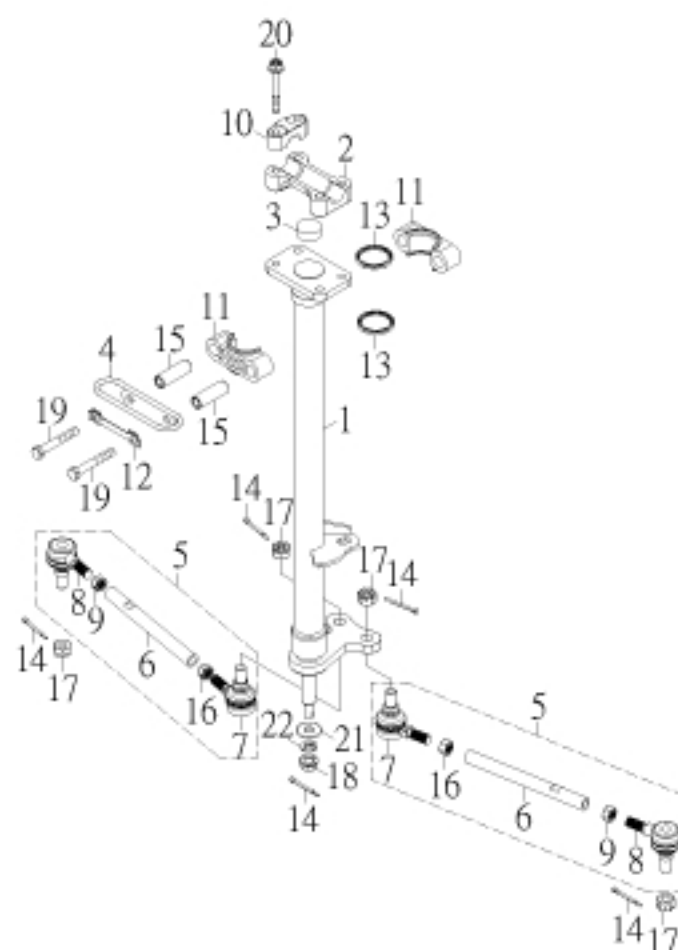
NO. 項目	PARTS NO. 零件號碼	PARTS NAME 零件名稱	QTY 用量	NOTE 備註
1	32100-JOW-0001	REAR ARM	1	擺動臂
2	32115-RAM-00	BUSH	2	擺動臂軸襯
3	32116-JOW-00	SPACER	1	擺動臂隔筒
4	32118-RAM-00	COVER, THRUST	2	擺動臂座封蓋
5	32119-RAM-00	OIL SEAL	2	擺動臂防塵封
6	32160-JOW-00	SEAL, GUARD	1	鏈條導環
7	32190-JOW-00	COVER	1	下護蓋
8	93210-25200	O-RING 2.5*20	2	護油圈
9	93310-222820	NEEDLE BEARING HK-2220	2	滾針軸承
10	94610-15280-B	SHAFT, PIVOT	1	擺動臂軸
11	95301-142212-B	NUT, LOCK 14MM	1	止鬆螺帽
12	96414-08012-B	BOLT, FLANGE	4	凸緣螺栓
13	97201-142820-B	WASHER, PLATE 14.2*28.4*2.0	1	平面墊圈
14	97201-243820	WASHER, PLATE	2	平面墊圈



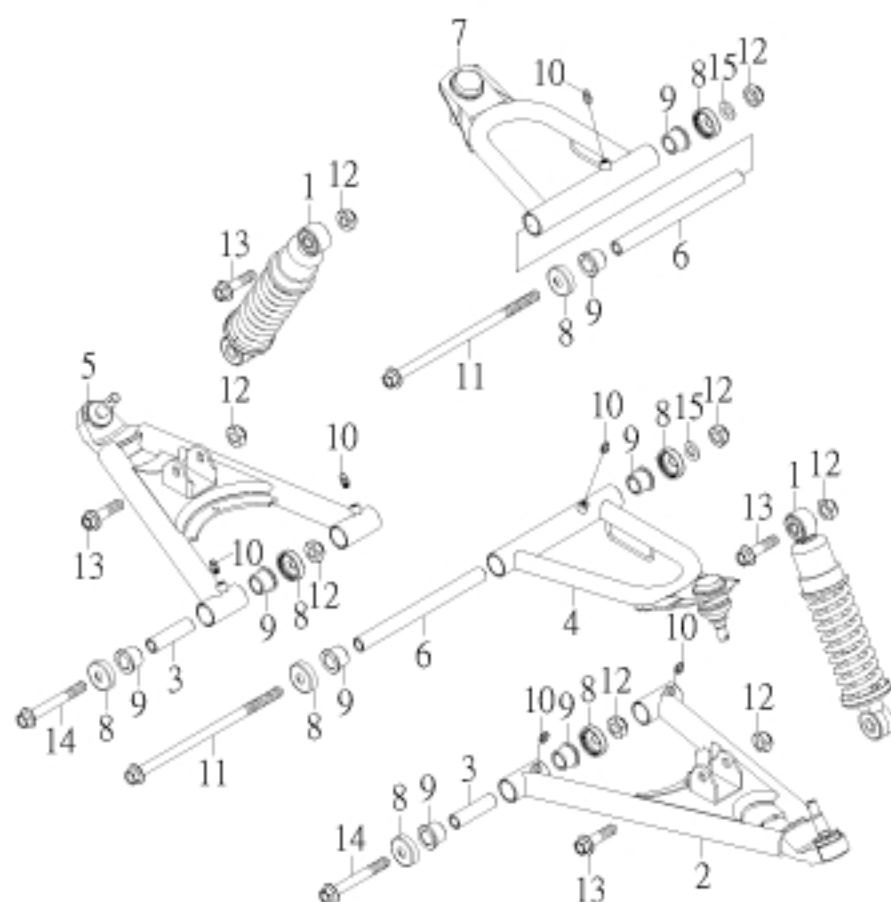
NO. 項目	PARTS NO. 零件號碼	PARTS NAME 零件名稱	Q'TY 用量	NOTE 備註
1	32167-RAM-00	TENSIONER	1	拉緊環
2	32168-RAM-00	BUSH	1	拉緊環軸襯
3	41110-JOW-00	FRAME COMP	1	車架整體
4	41154-RAM-00	PLUG, SPECIAL SHAPE	2	管塞
5	41181-JOW-00	ENGINE HANGER F	1	引擎前固定座
6	46412-RAM-00	BUSH, SOLID	2	轉向桿襯套
7	93210-24148	O-RING 2.4*14.8	2	護油圈
8	94340-06010-B	NIPPLE, GREASE M6*P1.0	1	黃油嘴
9	94610-10158-B	BOLT	1	前輪軸
10	94610-10165-B	BOLT, FLANGE	2	吊架固定軸
11	95311-101710-B	NUT, NYLON	5	尼龍螺帽
12	96414-08012-B	BOLT, FLANGE	1	凸緣螺栓
13	96414-10085-B	BOLT, FLANGE	2	凸緣螺栓
14	97201-082420-B	WASHER, PLATE 8.7*24*2.0	1	平面墊圈



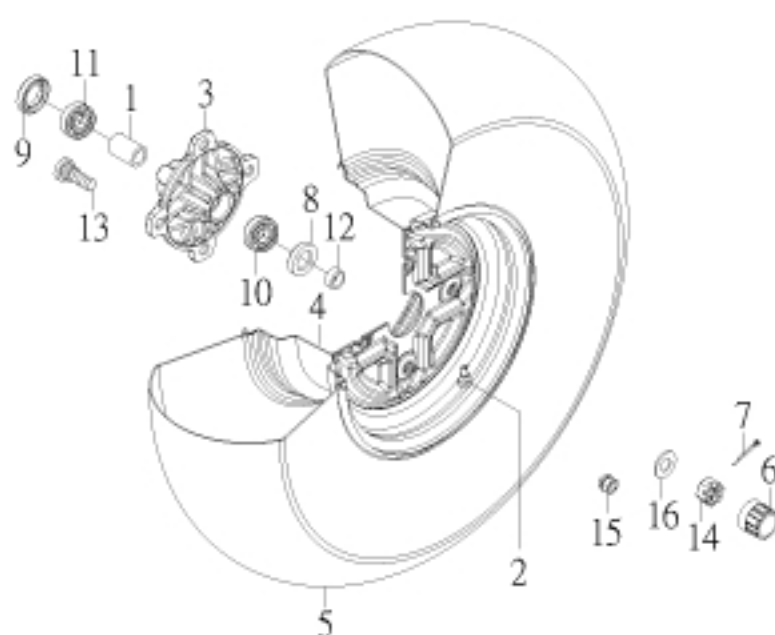
NO. 項目	PARTS NO. 零件號碼	PARTS NAME 零件名稱		Q'TY 用量	NOTE 備註
1	41154-JOW-00	PLUG, SPECIAL SHAPE	管塞	2	
2	41606-JOW-00	CARRIER, FRONT	前架	1	
3	41610-JOW-00	CRUTCH, FRONT	前支架	1	
4	96414-08014-B	BOLT, FLANGE	凸緣螺栓	4	
5	96414-08016-B	BOLT, FLANGE	凸緣螺栓	6	



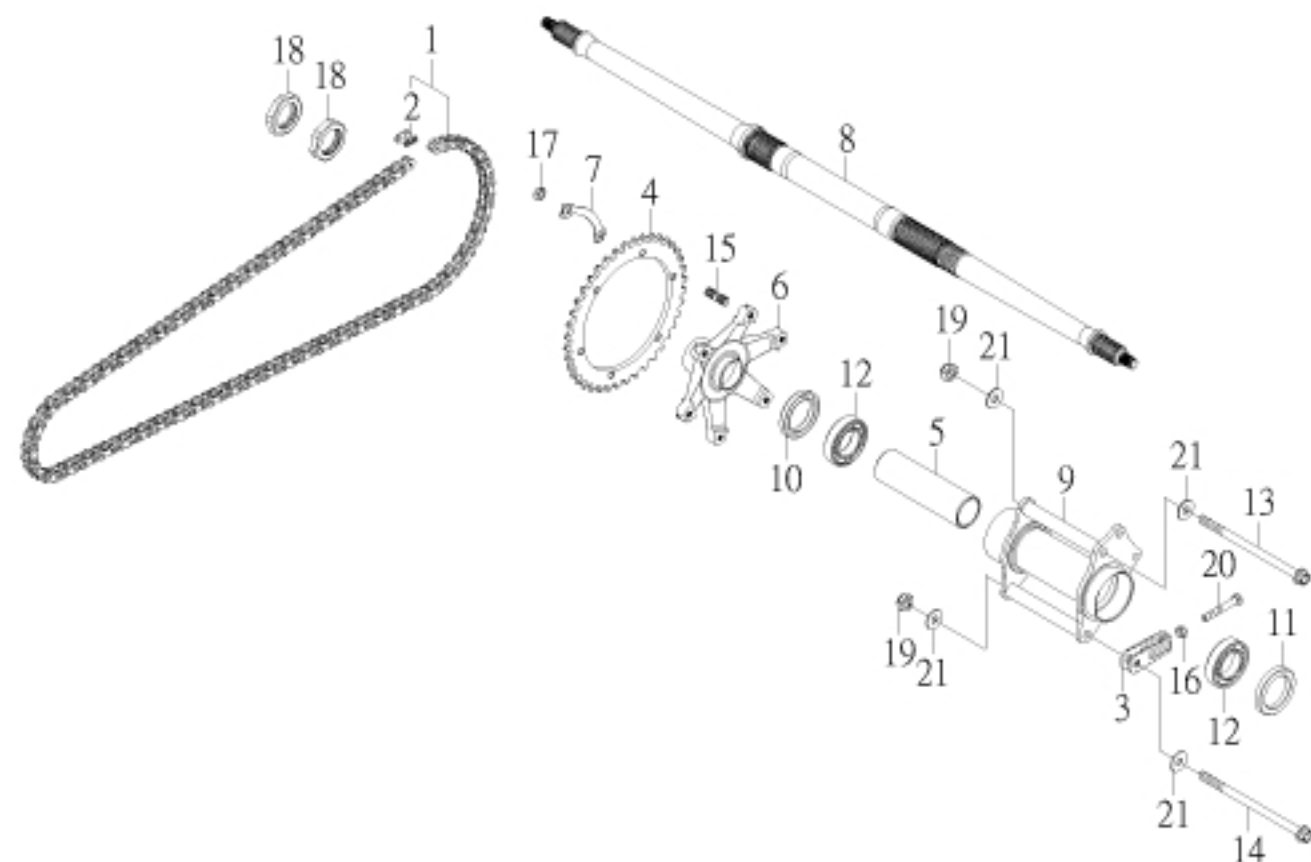
NO. 項目	PARTS NO. 零件號碼	PARTS NAME 零件名稱		Q'TY 用量	NOTE 備註
1	42101-JOW-00	COLUMN, STEERING	轉向桿	1	
2	42106-SK9-00	BRIDGE, TOP	頂樑	1	
3	42111-RAM-00	PLUG, TAPER	塞子	1	
4	42118-RAM-00	BRACKET, STRG LOWER	導線環	1	
5	42140-JOW-00	ROD, TIE ASS'Y	連桿總成	2	
6	42141-JOW-00	ROD, TIE	連桿	2	
7	42142-RAM-00	JOINT, UNIVERSAL 1	萬向接頭 內	2	
8	42143-RAM-00	JOINT, UNIVERSAL 2	萬向接頭 外	2	
9	42146-RAM-00	NUT	連桿螺帽	2	
10	46125-RAM-00	HOLDER, HANDLE UPPER	把手上固定座	2	
11	46411-RAM-00	BEARING, STEERING	轉向桿固定座	2	
12	46416-RAM-00	WASHER, LOCK	制止片	1	
13	46417-RAM-00	OIL SEAL	轉向桿密封圈	2	
14	90240-23020-B	COTTER PIN 2.3*20	開口銷	5	
15	93510-081442-C	COLLAR	轉向桿座隔管	2	
16	95201-101408-C	NUT, HEXAGON	六角螺帽	2	
17	95321-101710-C	NUT, CASTLE	有槽螺帽	4	
18	95401-101409-B	NUT, FLANGE	凸緣螺帽	1	
19	96210-08060-B	BOLT, HEXAGON	六角螺栓	2	
20	96414-08050-B	BOLT, FLANGE	凸緣螺栓	4	
21	97201-102620-B	WASHER, PLATE	平面墊圈	1	
22	97301-101720-B	WASHER, SPRING	彈簧墊圈	1	



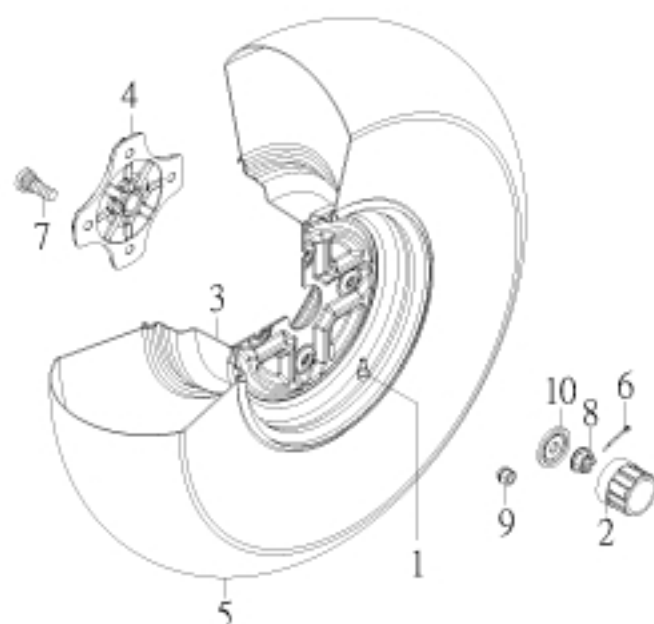
NO. 項目	PARTS NO. 零件號碼	PARTS NAME 零件名稱		Q'TY 用量	NOTE 備註
1	42126-JOW-00	SHOCK ABSORBER ASS'Y	前緩衝器總成	2	
2	42161-RAM-0001	FRT.LWR, ARM LEFT	左前下搖臂	1	烤黑漆
3	42163-RAM-00	COLLAR	下搖臂軸襯	4	
4	42166-RAM-0001	FRT.UPPER, ARM LEFT	左前上搖臂	1	烤黑漆
5	42171-RAM-0001	FRT.LWR, ARM RIGHT	右前下搖臂	1	烤黑漆
6	42173-RAM-00	COLLAR	上搖臂軸襯	2	
7	42176-RAM-0001	FRT.UPPER, ARM RIGHT	右前上搖臂	1	烤黑漆
8	42183-RAM-00	COVER, THRUST	塵封蓋	12	
9	93330-152118	BUSH, SOLID	羅龍滑動軸承	12	
10	94340-06010-B	NIPPLE, GREASE M6*P1.0	黃油嘴	6	
11	94610-10208-B	SHAFT, PIVOT	上搖臂固定軸	2	
12	95311-101710-B	NUT, NYLON	尼龍螺帽	10	
13	96414-10055-B	BOLT, FLANGE	凸緣螺栓	4	
14	96414-10080-B	BOLT, FLANGE	凸緣螺栓	4	
15	97201-102020-B	WASHER, PLATE 10.5*20*2	平面墊圈	2	



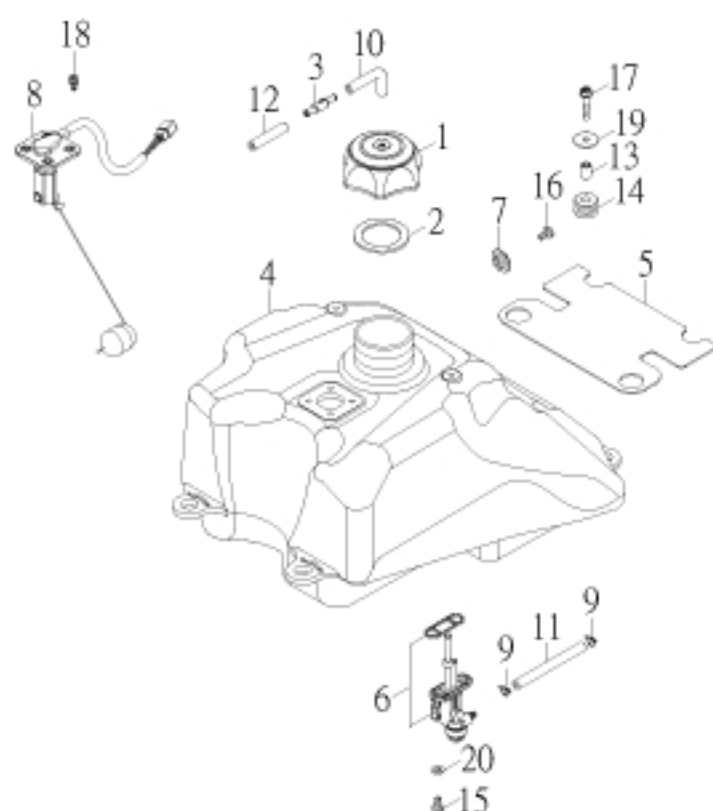
NO. 項目	PARTS NO. 零件號碼	PARTS NAME 零件名稱		Q'TY 用量	NOTE 備註
1	42515-RAM-00	SPACER, BEARING	前輪轂隔管	2	
2	42570-RAM-00	VALVE, RIM	氣門嘴	2	
3	42581-JOW-00	HUB, FRONT	前輪轂	2	
4	42582-JOW-00	WHEEL, FRONT AT12*6AT	前輪圈	2	
5	42590-JOW-00	TIRE, FRONT 25*8-12 DI-2010 38J	前輪胎	2	Duro
	42590-JOW-01	TIRE, FRONT AT25*8-12 K572 38N	前輪胎	2	Kenda
6	42595-SK9-00	CAP, WHEEL	輪圈飾蓋	2	
7	90240-29025-B	COTTER PIN 2.9*25	開口銷	2	
8	93110-22357	OIL SEAL TC 22*35*7	油封	2	
9	93110-26427	OIL SEAL TC26*42*7/10	油封	2	
10	93320-153511S	BALL BEARING 6202 CS05/2A	滾珠軸承	2	
11	93320-204212M	BALL BEARING 6004CM/2A	滾珠軸承	2	
12	93510-152209-C	COLLAR	前輪轂側隔管	2	
13	94710-10037-C	BOLT, RIBBED NECK	輪圈固定螺栓	8	
14	95321-142215-C	NUT, CASTLE	有槽螺帽	2	
15	95801-101718-C	LOCK NUT, FLANGE	鎖位凸緣螺帽	8	
16	97201-142820-C	WASHER, PLATE 14.2*28.4*2	平面墊圈	2	



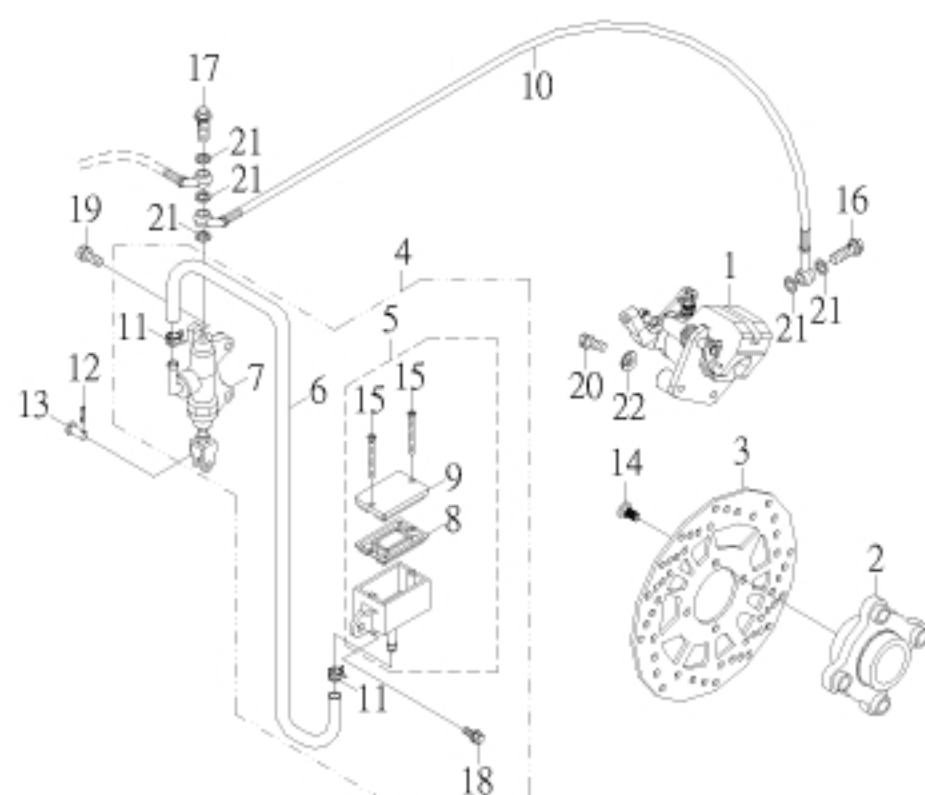
NO. 項目	PARTS NO. 零件號碼	PARTS NAME 零件名稱		Q'TY 用量	NOTE 備註
1	25741-JOW-00	CHAIN 520RO-92L	鏈條	1	
2	25742-RAM-00	JOINT, CHAIN	鏈條接頭	1	
3	32120-RAM-00	ADJUSTER, CHAIN	鏈條調整器	2	
4	42812-RAM-00	SPROCKET, DRIVEN 40T	傳動鏈輪	1	
5	42815-RAM-00	SPACER, BEARING	後輪隔管	1	
6	42821-RAM-00	DRIVE SPROCKET BASE	傳動鏈輪座	1	
7	42823-RAM-00	WASHER, LOCK	傳動鏈輪固定片	3	
8	42835-JOW-00	AXLE, WHEEL	後輪軸	1	
9	42881-CFS-0001	HUB, REAR	後輪轂	1	烤黑漆
10	93110-42628	OIL SEAL 42*62*8	油封	1	
11	93110-44628	OIL SEAL 44*62*8	油封	1	
12	93320-356214	BALL BEARING 6007/2A	滾珠軸承	2	
13	94610-10174-B	BOLT	後輪轂固定軸	1	
14	94610-10178-B	BOLT	後輪轂固定軸	1	
15	94717-08030-C	BOLT, STUD	雙頭螺栓	6	
16	95201-081207-B	NUT, HEXAGON	六角螺帽	2	
17	95201-081406-B	NUT, HEXAGON	六角螺帽	6	
18	95201-335014-C	NUT, HEXAGON	六角螺帽	2	
19	95311-101710-B	NUT, NYLON	尼龍螺帽	2	
20	96210-08055-B	BOLT, HEXAGON	六角螺栓	2	
21	97201-102620-B	WASHER, PLATE 10.3*26*2.0	平面墊圈	4	



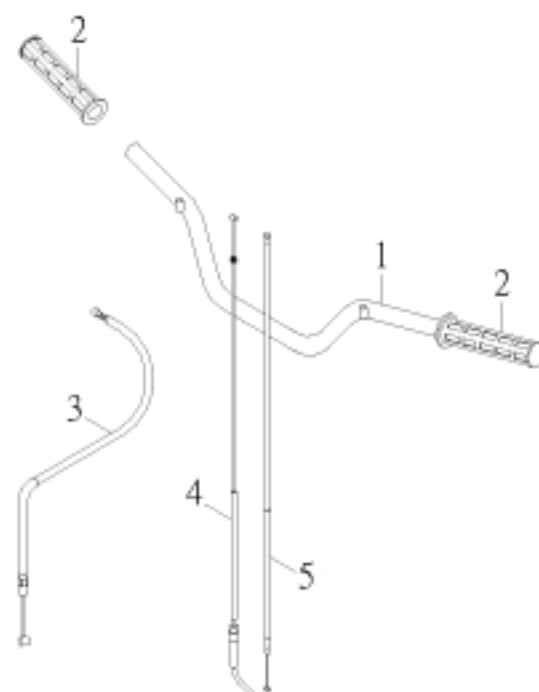
NO. 項目	PARTS NO. 零件號碼	PARTS NAME 零件名稱	Q'TY 用量	NOTE 備註
1	42570-RAM-00	VALVE, RIM	2	
2	42595-SK9-00	CAP, WHEEL	2	
3	42596-JOW-00	HOLDER, WHEEL CAP	2	
4	42882-JOW-00	WHEEL, REAR 12*8.0AT	2	
5	42885-JOW-00	COLLAR, WHEEL	2	
6	42890-JOW-00	TIRE, REAR 25*10-12 DI-2010 45J	2	Duro
	42890-JOW-01	TIRE, REAR AT25*10-12 K572 45N	2	Kenda
7	90240-29025-B	COTTER PIN 2.9*25	2	
8	94710-10037-C	BOLT, RIBBED NECK	8	
9	95326-142114-C	NUT, CASTLE FLANGE	2	
10	95801-101718-C	LOCK NUT, FLANGE	8	



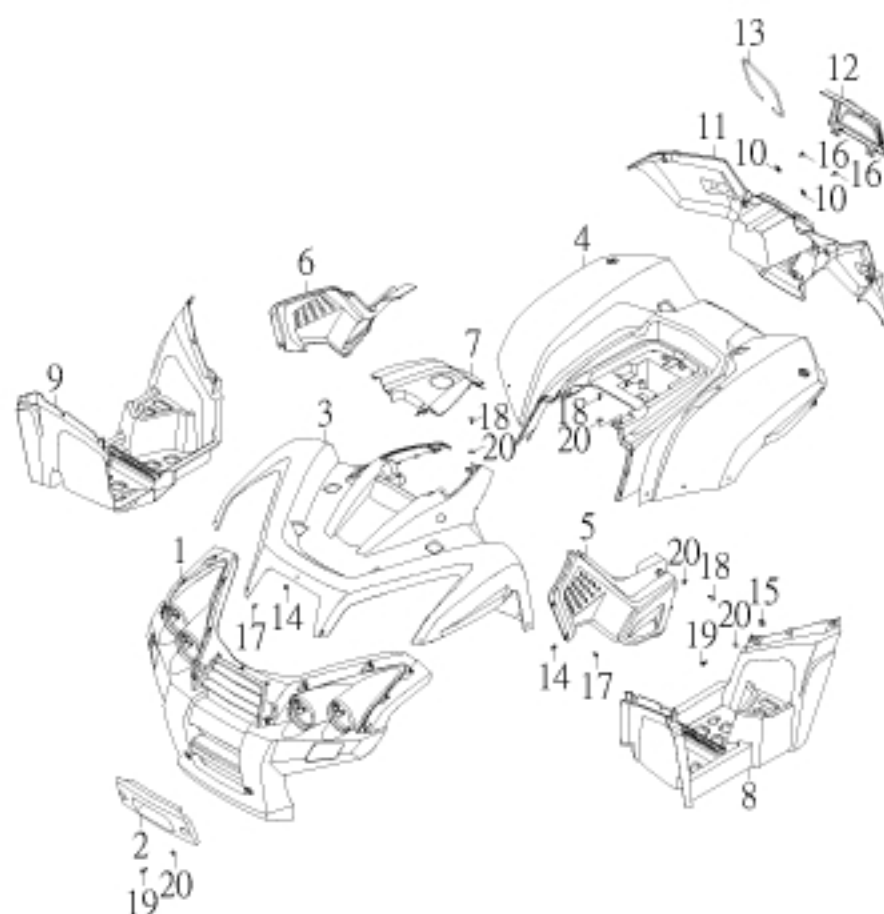
NO. 項目	PARTS NO. 零件號碼	PARTS NAME 零件名稱	QTY 用量	NOTE 備註
1	43102-RAM-00	CAP ASS'Y	1	汽油箱蓋總成
2	43103-RAM-00	CAP WASHER	1	油箱蓋墊圈
3	43108-SK5-00	CHECK, VALVE	1	汽油逆止閥
4	43110-JOW-00	FUEL TANK	1	汽油箱
5	43154-JOW-00	GUARD	1	保護板
6	43500-RAM-01	FUEL COCK ASS'Y	1	油杯
7	52726-JOW-00	BUTTON	1	座墊鈕扣
8	62770-JOW-00	SENDER UNIT ASSEMBLY	1	汽油油面感應器
9	90210-12010	CLIP	2	管夾
10	90310-50050	HOSE 5*8*50	1	通氣管
11	90310-50200	HOSE, FUEL 5*10*200	1	汽油管
12	90310-50390	HOSE 5*8*390	1	通氣管
13	93510-061015-B	COLLAR F	4	油箱隔管 前
14	93580-102416	GROMMET R	4	油箱套環 後
15	96318-06012-G	SCREW, PAN HEAD	2	十字孔頭螺絲
16	96318-06020-G	SCREW, PAN HEAD	1	十字孔頭螺絲
17	96414-06025-B	BOLT, FLANGE	4	凸緣螺栓
18	96612-05012-C	BOLT, HEXAGON WITH WASHER	4	六角十字穴螺栓附墊圈
19	97201-062220-B	WASHER, PLATE	4	平面墊圈
20	97210-061315	WASHER, PLATE	2	石棉墊圈



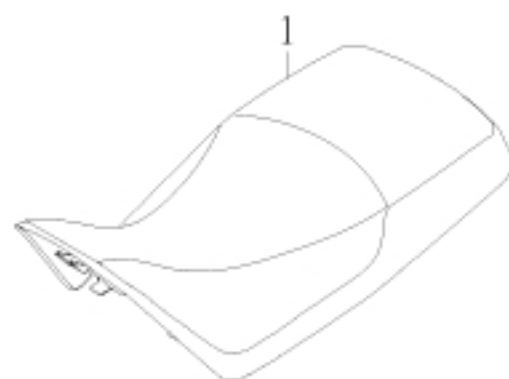
NO. 項目	PARTS NO. 零件號碼	PARTS NAME 零件名稱	Q'TY 用量	NOTE 備註
1	45801-CFS-01	CALIPER ASS'Y	1	卡鉗總成
2	45830-RAM-00	BRACKET, DISC	1	刹車圓盤座
3	45831-RAM-00	DISC, BRAKE	1	刹車圓盤
4	45870-RAM-01	MASTER CYLINDER SUB ASS'Y	1	主缸總成
5	45871-RAM-00	RESERVOIR	1	油槽總成
6	45874-RAM-00	HOSE 8*13*400	1	油管
7	45877-RAM-01	CYLINDER KIT, MASTER	1	推進器組
8	45878-NAF-00	DIAPHRAGM, RESERVOIR	1	油槽隔片
9	45879-NAF-00	CAP, RESERVOIR	1	油槽蓋
10	61320-JOW-00	HOSE, BRAKE	1	刹車油管
11	90220-80013	CLAMP	2	管夾
12	90230-12008	COTTER PIN	1	開尾銷
13	94610-06016-B	PIN, CLEVIS	1	帶頭銷
14	94706-08017-B	BOLT, BUTTON	4	刹車盤固定螺栓
15	94712-04040-K	SCREW, FLAT HEAD	2	十字孔埋頭螺絲
16	94716-10022-G	BOLT, UNION	1	接合螺栓
17	94716-10033-G	BOLT, UNION	1	接合螺栓
18	96414-06016-B	BOLT, FLANGE	1	凸緣螺栓
19	96414-06022-B	BOLT, FLANGE	2	凸緣螺栓
20	96414-08045-B	BOLT, FLANGE	2	凸緣螺栓
21	97230-101512	WASHER, COPPER 10.3*15*1.2	5	銅墊圈
22	97301-081520-B	WASHER, SPRING	2	彈簧墊圈



NO. 項目	PARTS NO. 零件號碼	PARTS NAME 零件名稱		Q'TY 用量	NOTE 備註
1	46110-JOW-00	HANDLEBAR	把手整體	1	
2	46240-RAM-00	GRIP	握把	2	
3	61340-JOW-00	CABLE, HANDBRAKE	手刹車鋼索	1	
4	61620-JOW-00	CABLE, THROTTLE	節流鋼索	1	
5	61720-JOW-00	CABLE, CHOKE	阻風導線	1	

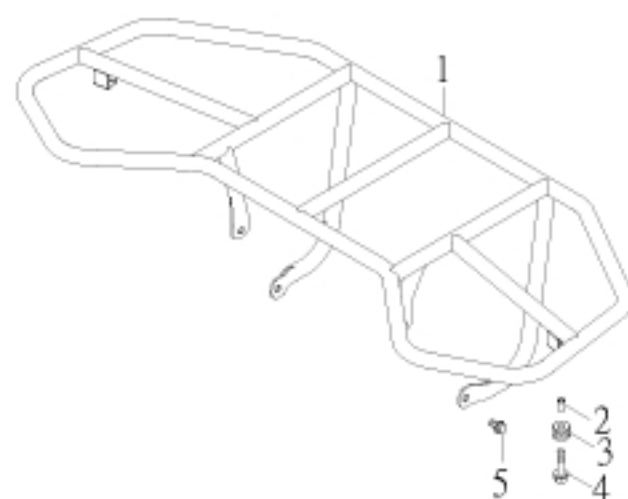


NO. 項目	PARTS NO. 零件號碼	PARTS NAME 零件名稱		Q'TY 用量	NOTE 備註
1	51121-JOW-01	SHIELD COVER, FRONT	前保桿飾蓋	1	
2	51122-JOW-00	COVER, WINCH	絞盤飾蓋	1	
3	51161-JOW-00	COVER, FRONT	前蓋	1	
4	51171-JOW-00	COVER, SIDE	後蓋	1	
5	51172-JOW-00	SIDE COVER L	左側蓋	1	
6	51173-JOW-00	SIDE COVER R	右側蓋	1	
7	51532-JOW-00	COVER, TOP	油箱上蓋	1	
8	53235-JOW-00	MUDGUARD L	左腳踏板	1	
9	53245-JOW-00	MUDGUARD R	右腳踏板	1	
10	53396-NAF-00	HINGE	鉸鏈	2	
11	57820-JOW-00	BAGGAGE COMPARTMENT	後置物箱	1	
12	57830-JOW-00	COVER, BAGGAGE COMPARTMENT	後置物箱蓋	1	
13	57842-JOW-00	SEAL, BAGGAGE COMPARTMENT	後置物箱封圈	1	
14	95101-05012	NUT, SPRING	U型板螺帽	21	
15	95101-061820-C	NUT, SPRING	U型板螺帽	12	
16	96110-41218-K	SCREW, TAPPING	自攻螺絲	2	
17	96112-51216-K	SCREW, TAPPING	自攻螺絲	21	
18	96318-06012-G	SCREW, PAN HEAD	十字孔頭螺絲	20	
19	96318-06015-G	SCREW, PAN HEAD	十字孔頭螺絲	14	
20	97321-061825-G	WASHER, FLANGE	凸緣墊圈	34	

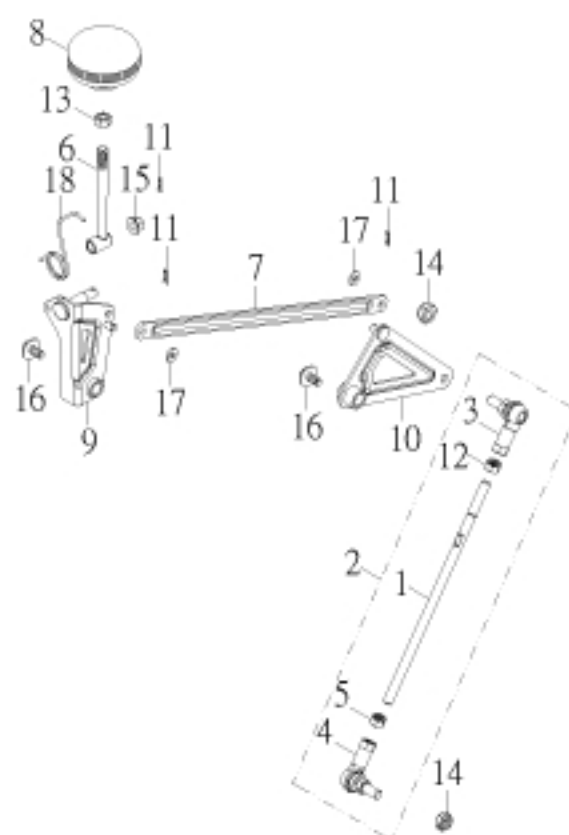


NO. 項目	PARTS NO. 零件號碼	PARTS NAME 零件名稱	Q'TY 用量	NOTE 備註
-----------	-------------------	--------------------	------------	------------

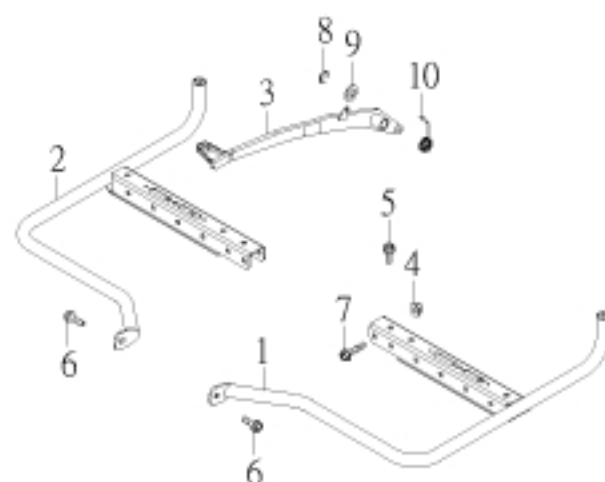
1	52730-JOW-00	SINGLE SEAT ASS'Y	單人座墊總成	1
---	--------------	-------------------	--------	---



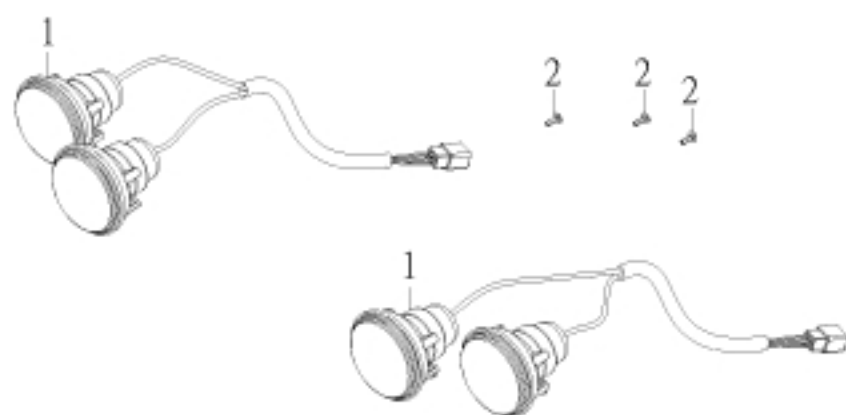
NO. 項目	PARTS NO. 零件號碼	PARTS NAME 零件名稱		Q'TY 用量	NOTE 備註
1	52850-JOW-00	CARRIER, REAR	後架	1	
2	93510-061010	COLLAR	牌照板軸環	2	
3	93580-102212	GROMMET	牌照板套環	2	
4	96214-06025-B	BOLT, HEXAGON WITH WASHER	六角螺栓附墊圈	2	
5	96414-08014-B	BOLT, FLANGE	凸緣螺栓	4	



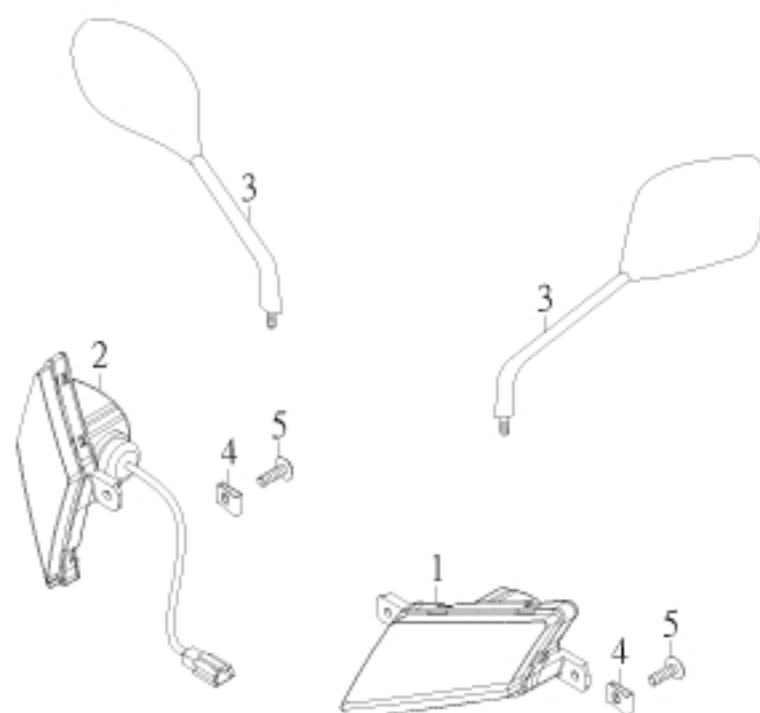
NO. 項目	PARTS NO. 零件號碼	PARTS NAME 零件名稱		QTY 用量	NOTE 備註
1	53203-JOW-00	GEAR SHIFT LEVER LOWER	變速桿下	1	
2	53203-JOW-00A	GEAR SHIFT LEVER LOWER	變速桿下總成	1	
3	53207-JOW-00	JOINT L, GEAR SHIFT LEVER	變速桿接頭左	1	
4	53208-JOW-00	JOINT R, GEAR SHIFT LEVER	變速桿接頭右	1	
5	53209-JOW-00	NUT	變速桿螺帽	1	
6	53211-JOW-00	ROD SHIFT	排檔桿	1	
7	53213-JOW-00	GEAR SHIFT LEVER UPPER	變速桿上	1	
8	53214-GLO-00	HEAD SHIFT	排檔頭	1	
9	53215-JOW-00	ARM SHIFT	排檔臂	1	
10	53217-JOW-00	GEAR SHIFT LEVER	變速桿搖臂	1	
11	90230-12008	COTTER PIN	開尾銷	3	
12	95201-081207-B	NUT, HEXAGON	六角螺帽	1	
13	95201-101408-B	NUT, HEXAGON	六角螺帽	1	
14	95311-081308-B	NUT, NYLON	尼龍螺帽	2	
15	95401-081208-B	NUT, FLANGE	凸緣螺帽	1	
16	96218-06012-B	BOLT, HEXAGON WITH WASHER	六角螺栓附墊圈	2	
17	97201-061415-B	WASHER, PLATE	平面墊圈	2	
18	97508-221880-B	SPRING, TORSION	扭轉彈簧	1	



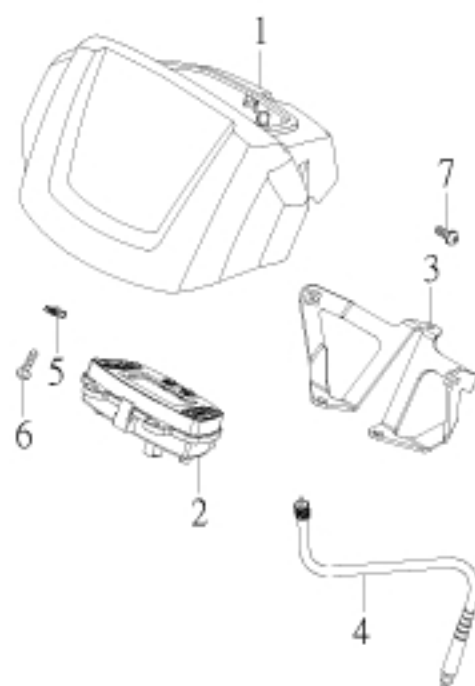
NO. 項目	PARTS NO. 零件號碼	PARTS NAME 零件名稱		Q'TY 用量	NOTE 備註
1	53231-JOW-00	FOOTREST L	左腳踏桿	1	
2	53241-JOW-00	FOOTREST R	右腳踏桿	1	
3	53261-JOW-00	PEDAL, BRAKE	後剎車踏板	1	
4	95401-081208-B	NUT, FLANGE	凸緣螺帽	4	
5	96414-08016-B	BOLT, FLANGE	凸緣螺栓	2	
6	96414-08050-B	BOLT, FLANGE	凸緣螺栓	4	
7	97011-12010-B	CIRCLIP 12*1.0	E形扣環	1	
8	97201-152620-B	WASHER, PLANE 15.2*25.6*2.0	平面墊圈	1	
9	97508-3226115-B	SPRING, TORSION	剎車踏板扭轉彈簧	1	



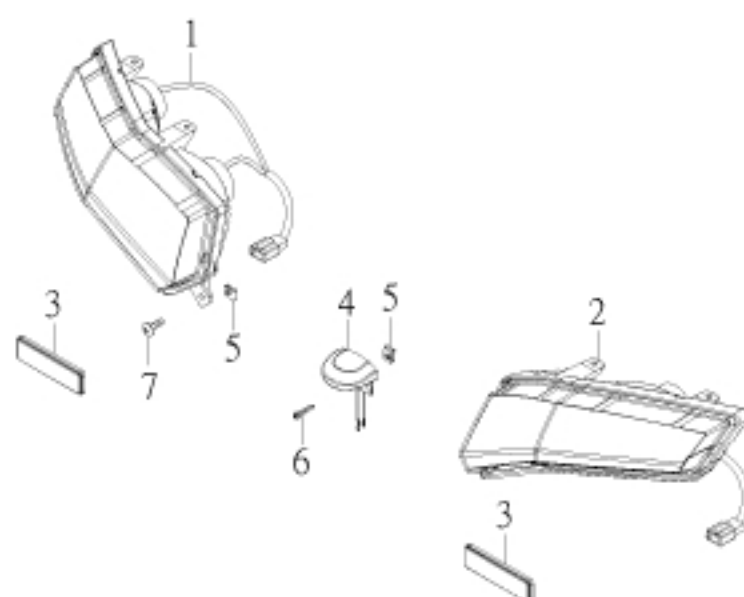
NO. 項目	PARTS NO. 零件號碼	PARTS NAME 零件名稱		Q'TY 用量	NOTE 備註
1	55300-MLS-00B	HEAD LIGHT ASS'Y	前燈總成	2	
2	96112-41218-K	SCREW, TAPPING	自攻螺絲	16	



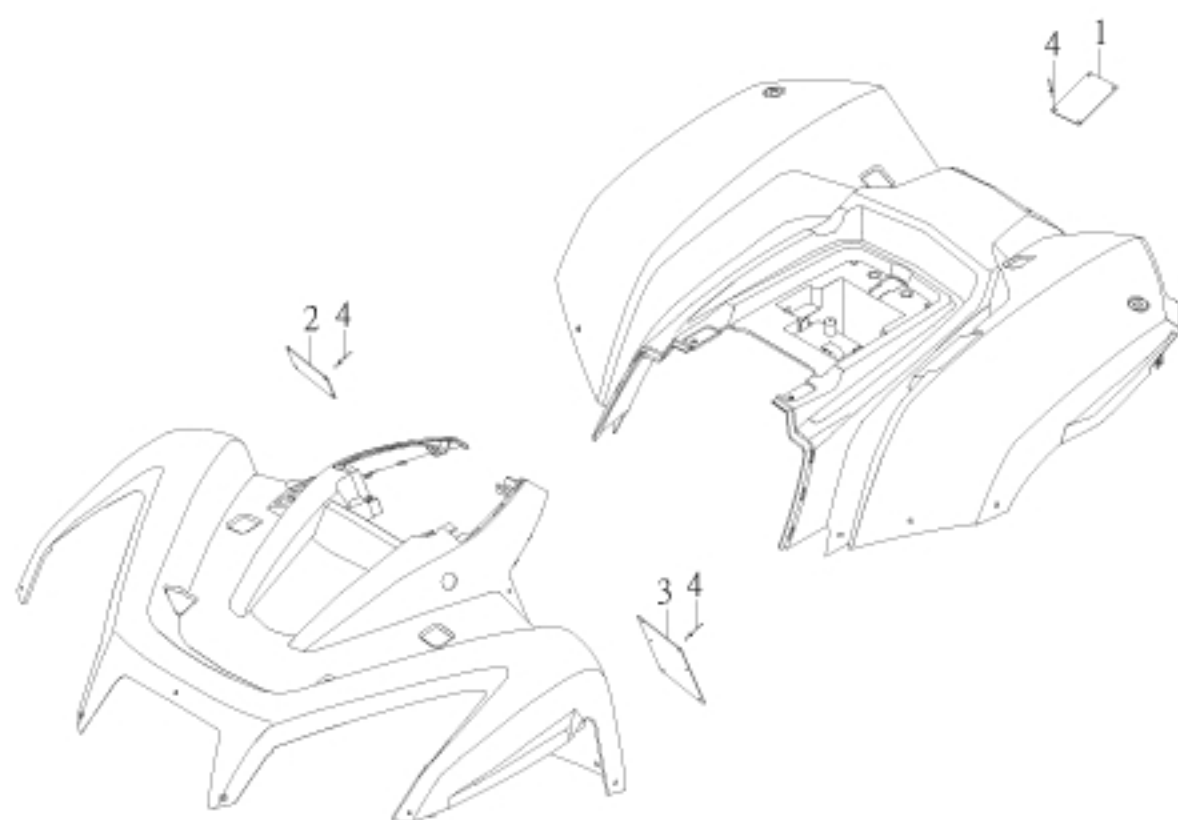
NO. 項目	PARTS NO. 零件號碼	PARTS NAME 零件名稱		Q'TY 用量	NOTE 備註
1	55350-JOW-00	WINKER ASS'Y, L FRONT	前方向燈組左	1	
2	55360-JOW-00	WINKER ASS'Y, R FRONT	前方向燈組右	1	
3	56270-ROA-00	MIRROR ASS'Y, BACK	後照鏡組	1	
4	95101-05012	NUT, SPRING	U型板螺帽	4	
5	96112-51216-K	SCREW, TAPPING	自攻螺絲	4	



NO. 項目	PARTS NO. 零件號碼	PARTS NAME 零件名稱		Q'TY 用量	NOTE 備註
1	55213-JOW-00	PROTECTOR, HANDLEBAR	把手上蓋	1	
2	55510-JOW-00	SPEEDOMETER ASS'Y	速度表總成	1	
3	55516-JOW-00	HOLDER, SPEEDOMETER	速度表固定板	1	
4	61520-JOW-00	CABLE, SPEEDOMETER ASS'Y	速度表鋼索總成	1	
5	95101-05012	NUT, SPRING	U型板螺帽	3	
6	96112-51216-K	SCREW, TAPPING	自攻螺絲	3	
7	96312-06016-K	SCREW, PAN HEAD WITH WASHER	十字孔頭螺絲附墊圈	3	



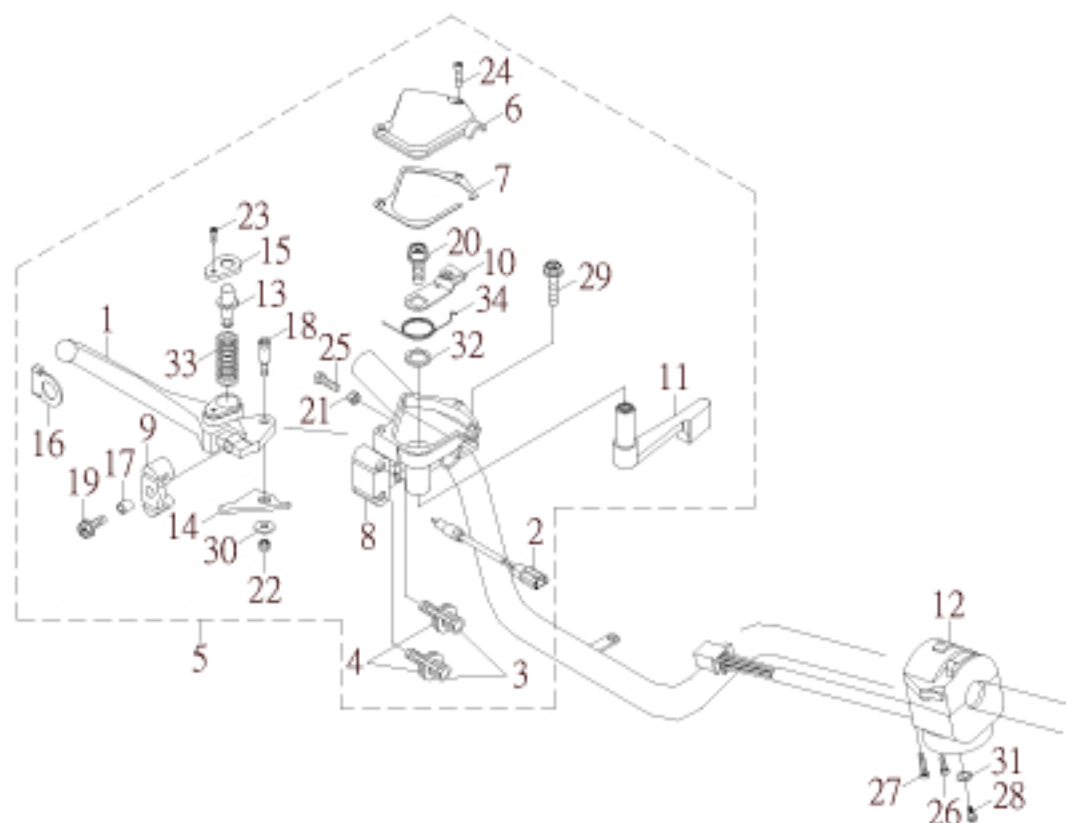
NO. 項目	PARTS NO. 零件號碼	PARTS NAME 零件名稱		Q'TY 用量	NOTE 備註
1	55700-JOW-00L	INDICATOR LIGHT L	左指示燈組	1	
2	55700-JOW-00R	INDICATOR LIGHT R	右指示燈組	1	
3	55722-JOW-00	REFLECTOR	反射片	2	
4	55740-MLS-00	LICENSE LIGHT	牌照燈組	1	
5	95101-05012	NUT, SPRING	U型板螺帽	11	
6	96110-51616-K	SCREW, TAPPING	自攻螺絲	1	
7	96112-51216-K	SCREW, TAPPING	自攻螺絲	10	



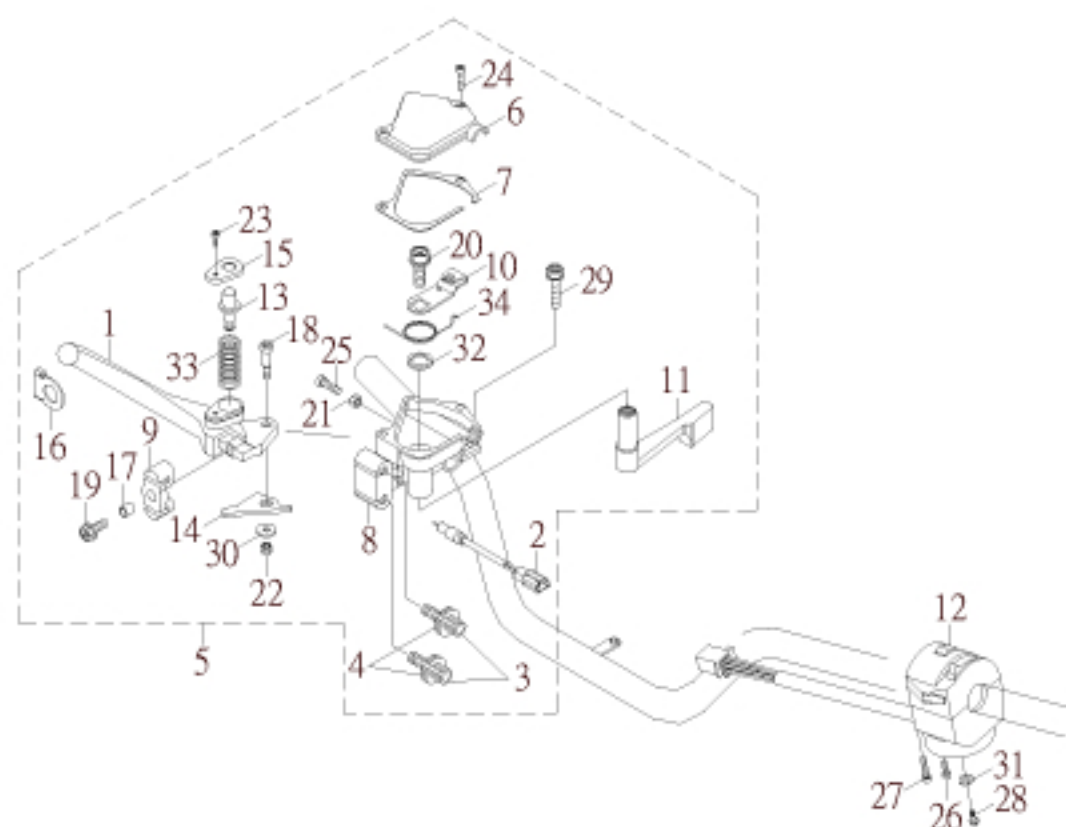
NO. 項目	PARTS NO. 零件號碼	PARTS NAME 零件名稱		Q'TY 用量	NOTE 備註
1	56576-RAM-00	LABEL WARNING 3 (TIRE)	胎壓規範	1	
2	56578-RAM-00	LABEL WARNING 2 (AGE)	年齡規範	1	
3	56781-RAM-01	LABEL WARNING 1 (OPERATION)	騎乘規範	1	
4	94320-32096	RIVET 3.2*9.6	拉釘	14	



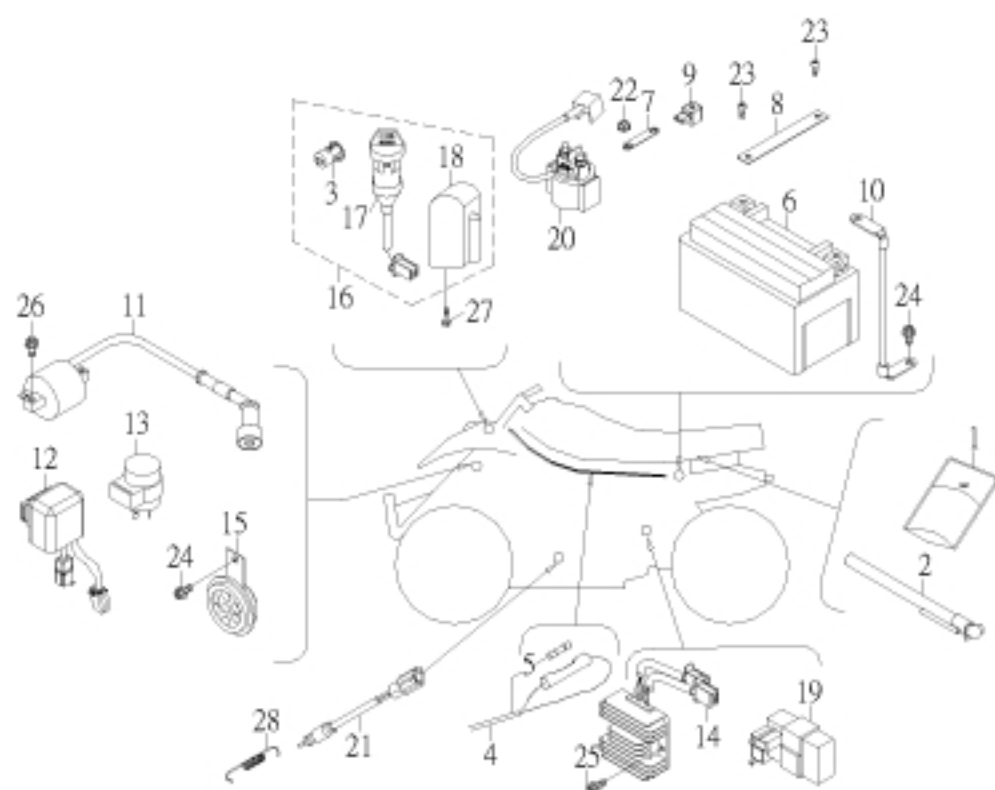
NO. 項目	PARTS NO. 零件號碼	PARTS NAME 零件名稱		Q'TY 用量	NOTE 備註
1	56221-JOW-00	BRACKET CENTER	托架軸心	1	
2	95201-223218-R	NUT, HEXAGON	六角螺帽	1	
3	97201-223926-B	WASHER, PLATE	平面墊圈	1	
4	97301-223656-B	WASHER, SPRING	彈簧墊圈	1	



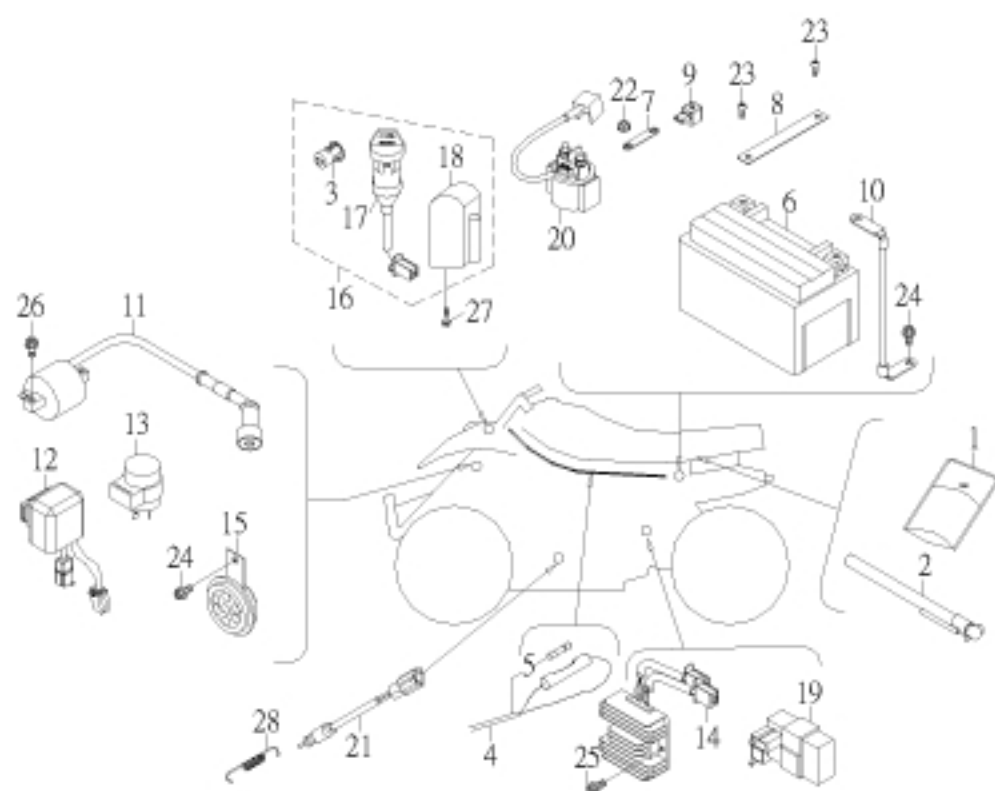
NO. 項目	PARTS NO. 零件號碼	PARTS NAME 零件名稱	Q'TY 用量	NOTE 備註
1	45872-RAM-00	LEVER, R	1	右拉桿
2	45890-RAM-00	WIRING, STOP SWITCH	1	右節流拉桿剎車燈線
3	62916-RAM-00	BOLT, WIRE ADJUSTING	2	離合器線調整螺栓
4	62917-RAM-00	NUT, WIRE ADJUSTING	2	離合器線調整螺帽
5	62920-RAM-02	THROTTLE LEVER ASS'Y	1	節流拉桿座總成
6	62923-RAM-00	CAP, THROTTLE	1	節流閥蓋
7	62924-RAM-00	GASKET, THROTTLE	1	節流閥墊片
8	62925-RAM-00	THROTTLE LEVER	1	節流拉桿座
9	62926-RAM-00	JOINT, CABLE	1	拉桿接頭
10	62927-RAM-00	ARM, THROTTLE	1	節流搖臂
11	62928-RAM-00	LEVER, THROTTLE	1	節流推桿
12	62930-RAM-02	HANDLE SWITCH ASS'Y L	1	左把手開關總成
13	62971-RAM-00	PIN, LOCK	1	拉桿鎖位銷
14	62973-RAM-00	LOCK, LEVER	1	拉桿鎖位板
15	62976-RAM-00	COVER	1	拉桿鎖位蓋
16	62978-RAM-00	STOP PLATE, JOINT	1	拉桿接頭止動板
17	93560-68507	COLLAR, LEVER 6.3*8.5*7.4	1	拉桿軸環
18	94710-05022-G	BOLT, LEVER	1	拉桿螺栓
19	94714-06016-G	BOLT	1	十字孔凸緣螺栓
20	94714-08012-G	BOLT	1	十字孔凸緣螺栓
21	95201-050804-G	NUT, HEXAGON	1	六角螺帽
22	95311-050805-K	NUT, NYLON	1	尼龍螺帽



NO. 項目	PARTS NO. 零件號碼	PARTS NAME 零件名稱	Q'TY 用量	NOTE 備註
23	96310-03008-B	SCREW, PAN HEAD	1	十字孔頭螺絲
24	96310-04015-G	SCREW, PAN HEAD	2	十字孔頭螺絲
25	96310-05015-G	SCREW, PAN HEAD	1	十字孔頭螺絲
26	96310-05030-G	SCREW, PAN HEAD	1	十字孔頭螺絲
27	96310-05040-G	SCREW, PAN HEAD	1	十字孔頭螺絲
28	96310-06010-G	SCREW, PAN HEAD	1	十字孔頭螺絲
29	96510-06020-G	BOLT	1	六角承窩螺栓
30	97201-051516-C	WASHER, PLATE 5.3*15*1.6	1	平面墊圈
31	97201-061310-B	WASHER, PLATE 6.5*13*1.0	1	平面墊圈
32	97201-142016-C	WASHER, PLATE 14.2*19.7*1.6	1	平面墊圈
33	97501-08025-B	SPRING	1	拉桿鎖壓縮彈簧
34	97508-10240-B	SPRING	1	節流閥扭轉彈簧



NO.	PARTS NO.	PARTS NAME	Q'TY	NOTE
項目	零件號碼	零件名稱	用量	備註
1	56100-CBT-00	TOOL SET	1	工具包
2	56190-RAM-00	GAUGE, AIR	1	胎壓計
3	57851-NAF-00	LOCK	1	後置物箱鎖
4	61120-JOW-00	WIRE, HARNESS	1	主配線總成
5	61151-CHP-00	FUSE (15A250V)	1	保險絲
6	62100-JOW-00	BATTERY ASS'Y	1	蓄電池總成
	62100-JOW-01	BATTERY ASS'Y (GTX12-BS)	1	蓄電池總成
7	62110-JOW-00	PLATE	1	蓄電池導片
8	62112-JOW-00	BAND, BATTERY	1	電瓶固定板
9	62116-JOW-00	PROTECTOR	1	蓄電池導片保護套
10	62120-JOW-00	CABLE, EARTH	1	蓄電池接地線
11	62310-JOW-00	IGNITION COIL ASS'Y	1	點火線圈總成
12	62340-JOW-00		1	防干擾線圈
13	62350-NAF-01	FLASHER RELAY ASSEMBLY	1	方向警報斷續器總成
14	62360-JOW-00	RECTIFIER & REGULATOR COMP	1	整流穩壓器
15	62370-NAF-00	HORN	1	喇叭
16	62500-JOW-00	KEY SET	1	鎖組
17	62501-JOW-00	MAIN SWITCH ASS'Y	1	主開關總成
18	62503-RAM-00	LOCK COMP, STEERING HANDLE	1	轉向舵鎖
19	62540-JOW-00	C.D.I UNIT ASS'Y	1	C.D.I 組件總成
20	62550-JOW-00	STARTER RELAY SWITCH COMP	1	起動開關組
21	62980-CHP-00	SWITCH ASS'Y, REAR STOP	1	剎車燈後置開關



NO. 項目	PARTS NO. 零件號碼	PARTS NAME 零件名稱		Q'TY 用量	NOTE 備註
22	95401-061006-B	NUT, FLANGE	凸緣螺帽	1	
23	96318-06012-G	SCREW, PAN HEAD	十字孔頭螺絲	2	
24	96414-06012-B	BOLT, FLANGE	凸緣螺栓	2	
25	96414-06016-B	BOLT, FLANGE	凸緣螺栓	2	
26	96414-06020-B	BOLT, FLANGE	凸緣螺栓	2	
27	96613-05012-B	BOLT, HEXAGON WITH WASHER	六角十字穴螺栓附墊圈	2	
28	97506-1272190-B	SPRING, STOP SWITCH	剎車開關拉伸彈簧	1	