

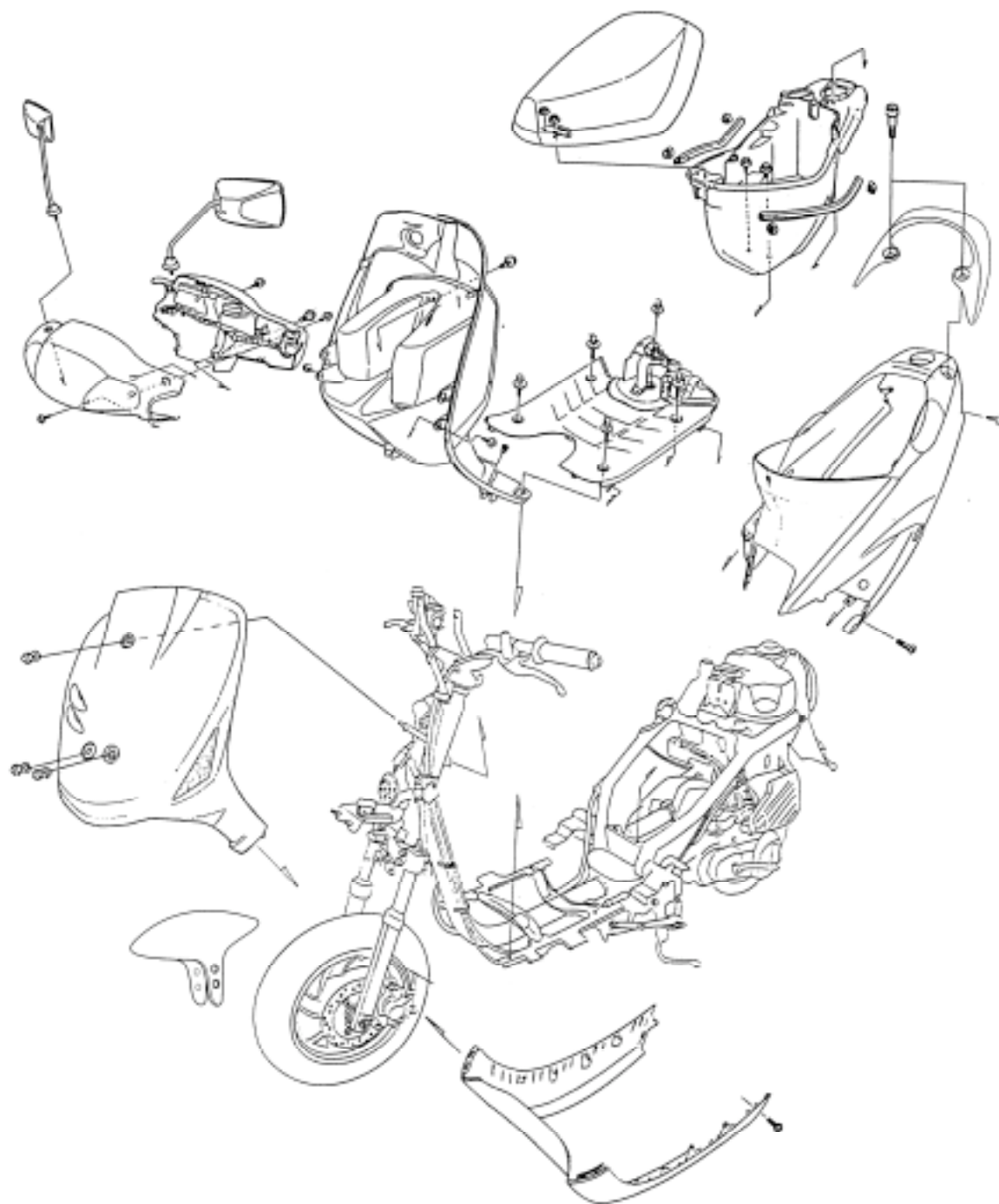
12. FRAME COVERS

12

FRAME COVERS

SERVICE INFORMATION.....	12-2
FRAME COVERS REMOVAL	12-3

ASSEMBLY DRAWING



12. FRAME COVERS

SERVICE INFORMATION

- When removing frame covers, use care not to pull them by force because the cover joint claws may be damaged.

Items Related for Removal

- Handlebar front cover ——— Handlebar rear cover
- Front cover ——— Headlight wire
- Handlebar rear cover ——— Speedometer cable and instrument light wire connectors, etc.
- Frame body cover ——— Met-in box, rear carrier
- Floor board ——— Rear carrier, frame body cover, right and left side rails, battery
- Front tool box ——— Front cover, front right and left lower covers, right and left side rails, floor board

12. FRAME COVERS

FRAME COVERS REMOVAL

FRONT COVER REMOVAL

Remove the bolt attaching the front cover.
Remove the two screws on the back of the front cover.
Remove the front cover downward.
Disconnect the headlight wire connector.
The installation sequence is the reverse of removal.

* During removal, be careful not to pull the joint claws forcibly and remove the front cover downward.

HANDLEBAR FRONT/REAR COVER REMOVAL

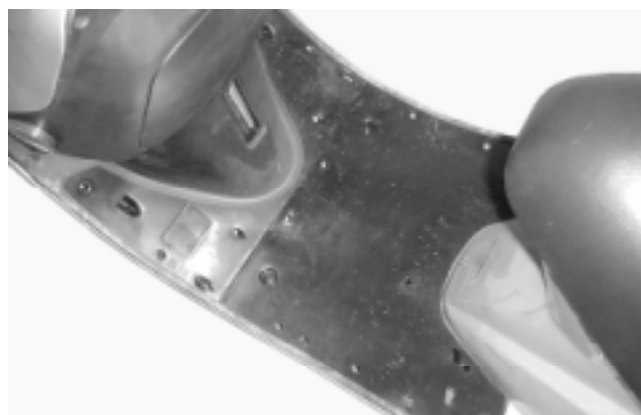
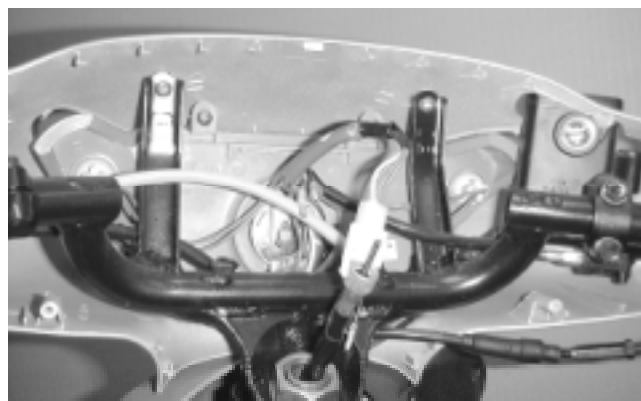
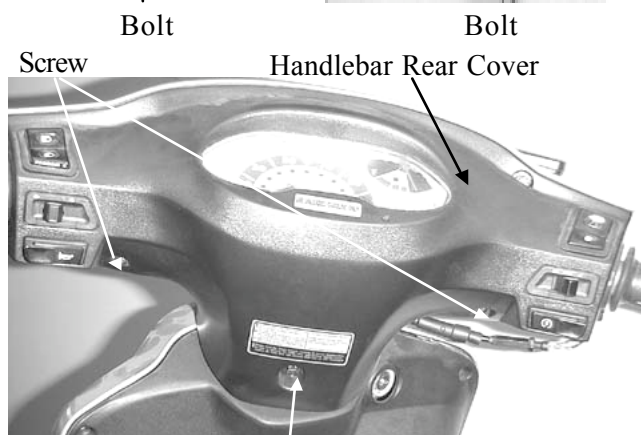
First remove the handlebar rear cover:
Remove the four screws attaching the handlebar rear cover.
Disconnect the wire connectors.
Remove the handlebar rear cover.
Remove the two screws attaching the handlebar front cover.
Remove the handlebar front cover.
The installation sequence is the reverse of removal.

FRONT RIGHT & LEFT LOWER COVERS REMOVAL

First remove the front cover.
Remove the right and left side rails by removing the two screws for each rail.
Remove the two bolts and three screws attaching each of the front right and left lower covers.
Remove the front right and left lower covers.
The installation sequence is the reverse of removal.

* When removing the right and left side rails, pull them backward not to damage the joint claws.

Front Cover

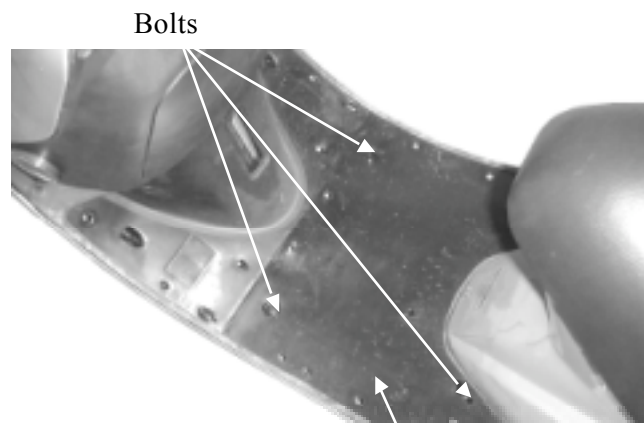


12. FRAME COVERS

FLOOR BOARD REMOVAL

Remove the rear carrier. (⇒ 12-5)
 Remove the frame body cover. (⇒ 12-5)
 Remove the right and left side rails. (⇒ 12-3)
 Remove the battery cover and battery.
 Remove the four bolts attaching the floor board to remove the floor board.
 The installation sequence is the reverse of removal.

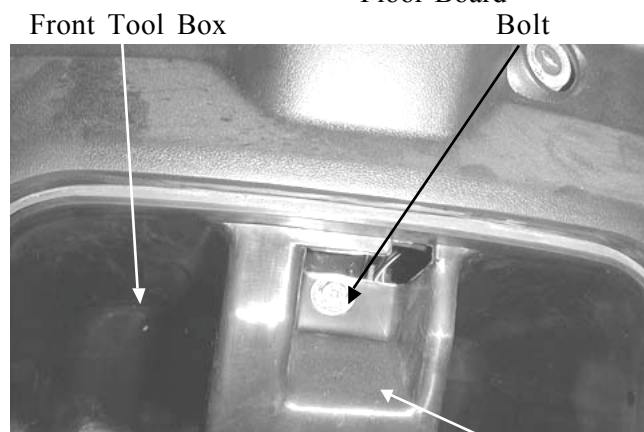
When removing the battery, first disconnect the battery negative (-) cable and then the positive (+) cable.



Bolts
 Floor Board Bolt

FRONT TOOL BOX REMOVAL

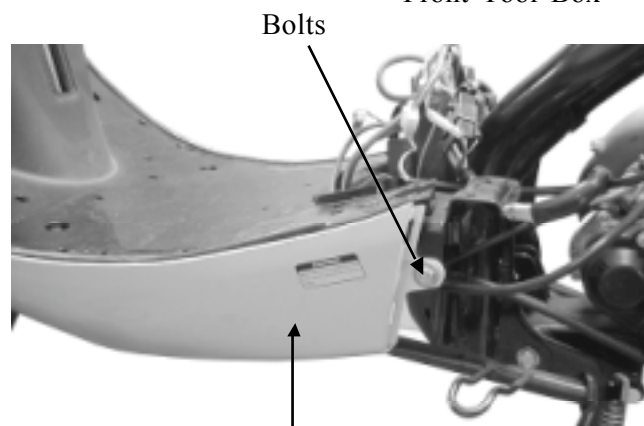
Remove the rear carrier. (⇒ 12-5)
 Remove the frame body cover. (⇒ 12-5)
 Remove the floor board. (⇒ 12-3)
 Remove the front right and left lower covers. (⇒ 12-3)
 Remove the three bolts attaching the front tool box.
 Remove the front tool box.
 The installation sequence is the reverse of removal.



Front Tool Box
 Bolt
 Front Tool Box

BOTTOM COVER REMOVAL

Remove the right and left side rails. (⇒ 12-3)
 Remove the front cover. (⇒ 12-3)
 Remove the front right and left lower covers. (⇒ 12-3)
 Remove the three bolts attaching each side of the bottom cover.
 Remove the bottom cover.
 The installation sequence is the reverse of removal.

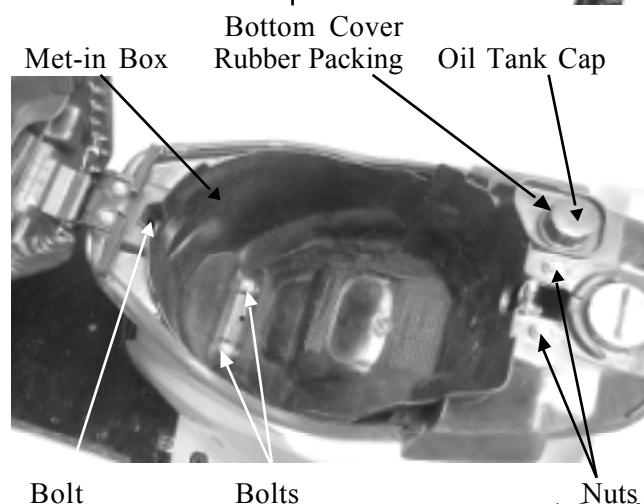


Bolts

MET-IN BOX REMOVAL:

Open the seat.
 Remove the two bolts, two nuts and the center bolt attaching the met-in box.
 Remove the oil tank cap and rubber packing.
 Remove the met-in box.
 The installation sequence is the reverse of removal.

Do not allow flames or sparks near the working area.

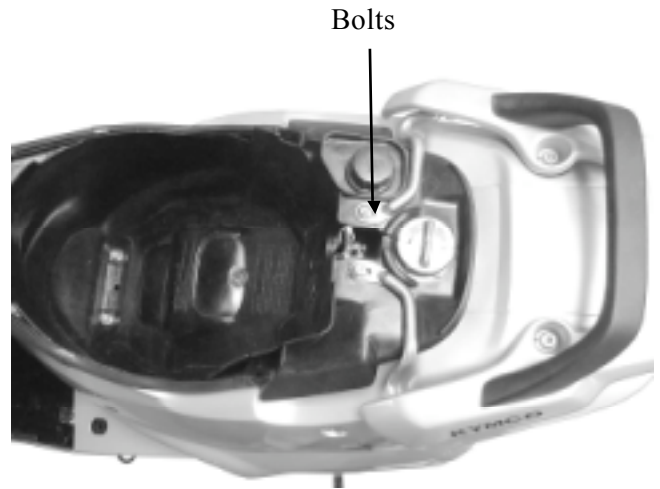


Met-in Box
 Bottom Cover
 Rubber Packing
 Oil Tank Cap
 Bolt
 Bolts
 Nuts

12. FRAME COVERS

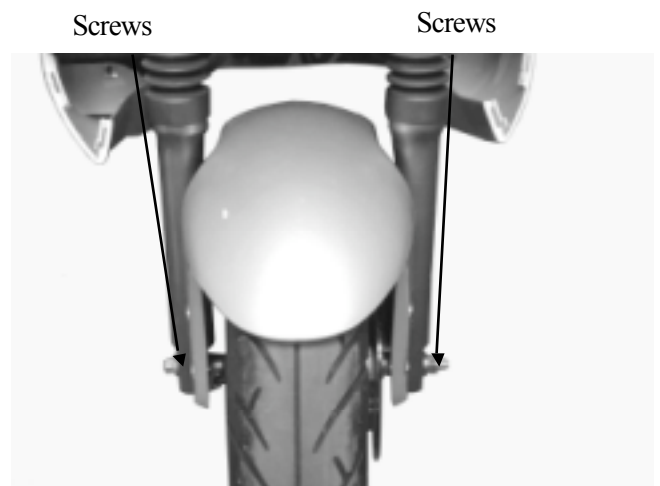
FRAME BODY COVER REMOVAL

Remove the met-in box. (⇒ 12-4)
Remove the three bolts attaching the rear carrier.
Remove the rear carrier.
Remove the frame body cover.
The installation sequence is the reverse of removal.



FRONT FENDER REMOVAL

Remove two bolts attaching each side of the front fender.
Remove the front fender.
The installation sequence is the reverse of removal.



Front Fender