

Parts Catalog

Mondial TD 150 L

Figure E01

Cylinder Block and Cylinder Head

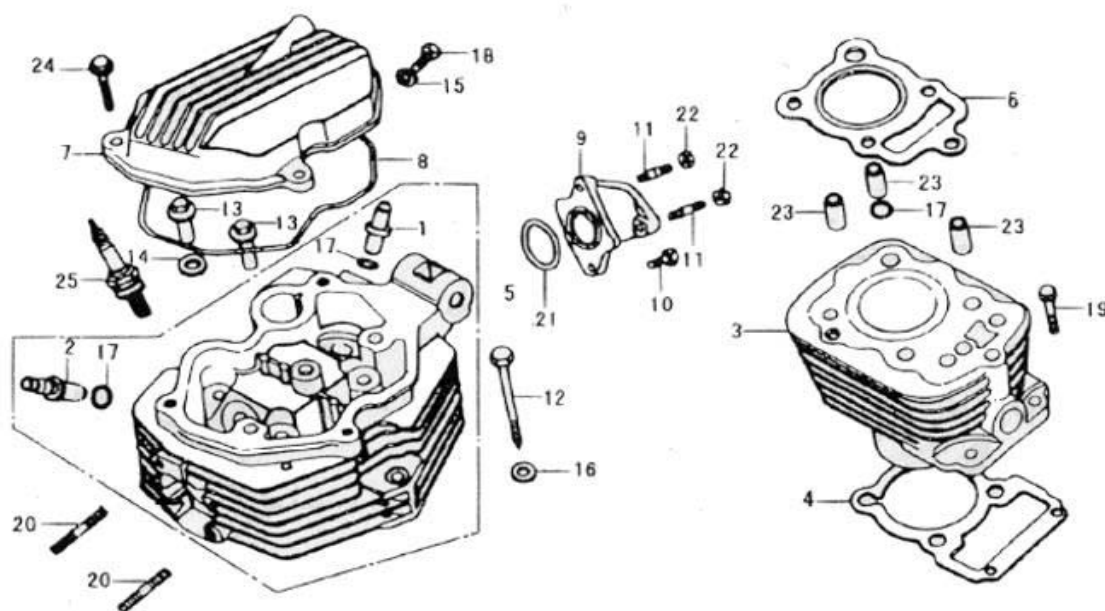


Figure No.	Reference No.	Part No.	Description	Quantity
E01	1	1221002-315D-30	Intake Valve Guide	1
E01	2	1221003-315D-30	Exhaust Valve Guide	1
E01	3	1211000-315D-30	Cylinder Block	1
E01	4	1211002-315D-30	Gasket	1
E01	5	1221000-315D-30	Cylinder Head Component	1
E01	6	1222000-315D-30	Gasket	1
E01	7	1231001-315D-30	Cylinder Head Cover	1
E01	8	1231002-315D-30	Sealing Ring	1
E01	9	1731004-315D-30	Intake Pipe Ring	1
E01	10	GB/T 5787-1986	Bolt M6 x 20	1
E01	11	GB 899-1988	Bolt Stud M6 x 28	2
E01	12	1221005-315D-30	Bolt M8 x 77	1
E01	13	3421000-315D-30	Bolt M6 x 28	3
E01	14	GB/T 5787-1986	Spark Plug	1
E01	15	1231004-315D-30	Washer 6	1
E01	16	1121006-315D-30	Washer 8	1
E01	17	1221004-315D-30	O-ring	3
E01	18	GB/T 5787-1986	Bolt M6 x 12	1
E01	19	GB/T 5783-2000	Bolt M6 x 25	2
E01	20	1221010-315D-30	Bolt M6 x 22	2
E01	21	1731002-315D-30	O-ring 33.5 x 3	1
E01	22	GB/T 6170-2000	Nut M6	2
E01	23	1211015-315D-30	Set Pin 10 x 20	3

Figure E02

Camshaft and Valves

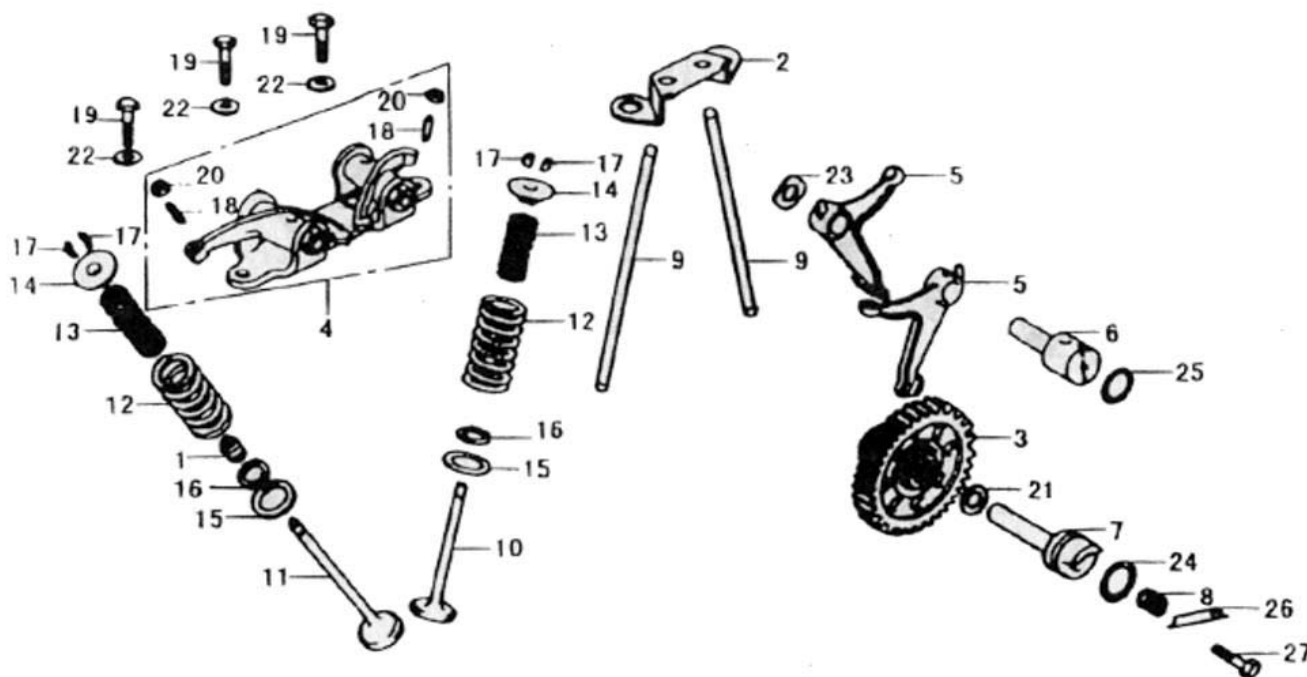


Figure No.	Reference No.	Part No.	Description	Quantity
E02	1	1472000-315D-30	Oil Insulating Cover	1
E02	2	1421001-315D-30	Push Rod Support	1
E02	3	1431000-315D-30	Gears	1
E02	4	1443000-315D-30	Rocker Arm Support	1
E02	5	1442001-315D-30	Lower Rocker Arm	2
E02	6	1442002-315D-30	Shaft For Lower Rocker Arm	1
E02	7	1442005-315D-30	Camshaft	1
E02	8	1442008-315D-30	Spring	1
E02	9	1421000-315D-30	Push Rod	2
E02	10	1471001-315D-30	Intake Valve	1
E02	11	1471002-315D-30	Exhaust Valve	1
E02	12	1471007-315D-30	Valve Outer Spring	2
E02	13	1471008-315D-30	Valve Inner Spring	2
E02	14	1471003-315D-30	Spring Seat	2
E02	15	1471005-315D-30	Spring Seat	2
E02	16	1471006-315D-30	Spring Seat	2
E02	17	1471004-315D-30	Valve Clip	4
E02	18	1441002-315D-30	Adjusting Screw For Valve Clearance	2
E02	19	GB/T 5783-2000	Bolt M8 x 28	3
E02	20	1441003-315D-30	Adjusting Nut For Valve Clearance	2
E02	21	1442006-315D-30	Washer	1
E02	22	GB/T 96-1985	Washer	3
E02	23	1442004-315D-30	Washer	1
E02	24	1442007-315D-30	O-ring 20 x 2.5	1
E02	25	1442003-315D-30	O-ring 17 x 2.5	1
E02	26	1442009-315D-30	Am Shaft Stopper	1
E02	27	GB/T 5783-2000	Bolt M6 x 12	1

Figure E03

Right Crankcase Cover

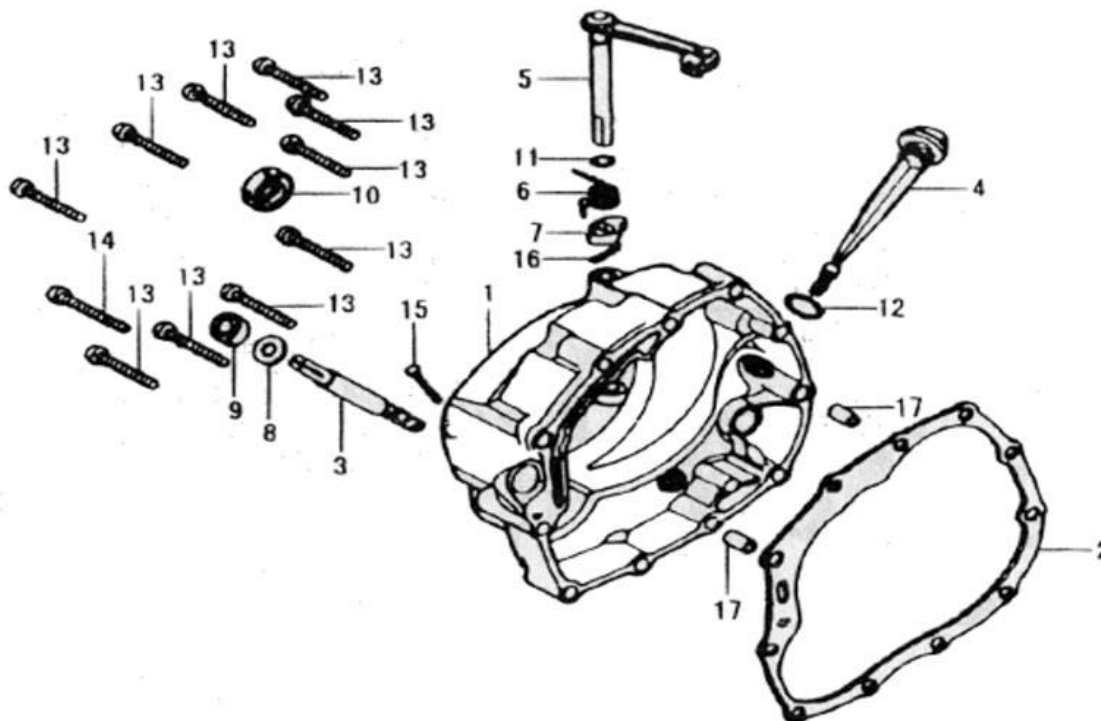


Figure No.	Reference No.	Part No.	Description	Quantity
E03	1	1130000-315D-30	Right Crankcase Cover	1
E03	2	1131002-315D-30	Gasket	1
E03	3	2591001-315D-30	Output Shaft	1
E03	4	1561001-315D-30	Dipstick	1
E03	5	2280000-315D-30	Clutch Rod	1
E03	6	2281001-315D-30	Spring	1
E03	7	2282001-315D-30	Clutch Cam	1
E03	8	2591002-315D-30	Washer	1
E03	9	2592000-315D-30	Oil Seal 6.5 x 14.5 x 7	1
E03	10	2713000-315D-30	Oil Seal 16 x 28 x 7	1
E03	11	2281003-315D-30	O-ring 6.8 x 1.9	1
E03	12	1561002-315D-30	O-ring 18 x 3	1
E03	13	GB/T 5787-1986	Screw M6 x 40	10
E03	14	GB/T 5787-1986	Screw M6 x 50	1
E03	15	GB/T 820-2000	Screw M6 x 25	1
E03	16	GB/T 91-200	Cotter Pin 2 x 30	1
E03	17	1131004-315D-30	Set Pin 8 x 14	2

Figure E04

Crankcase

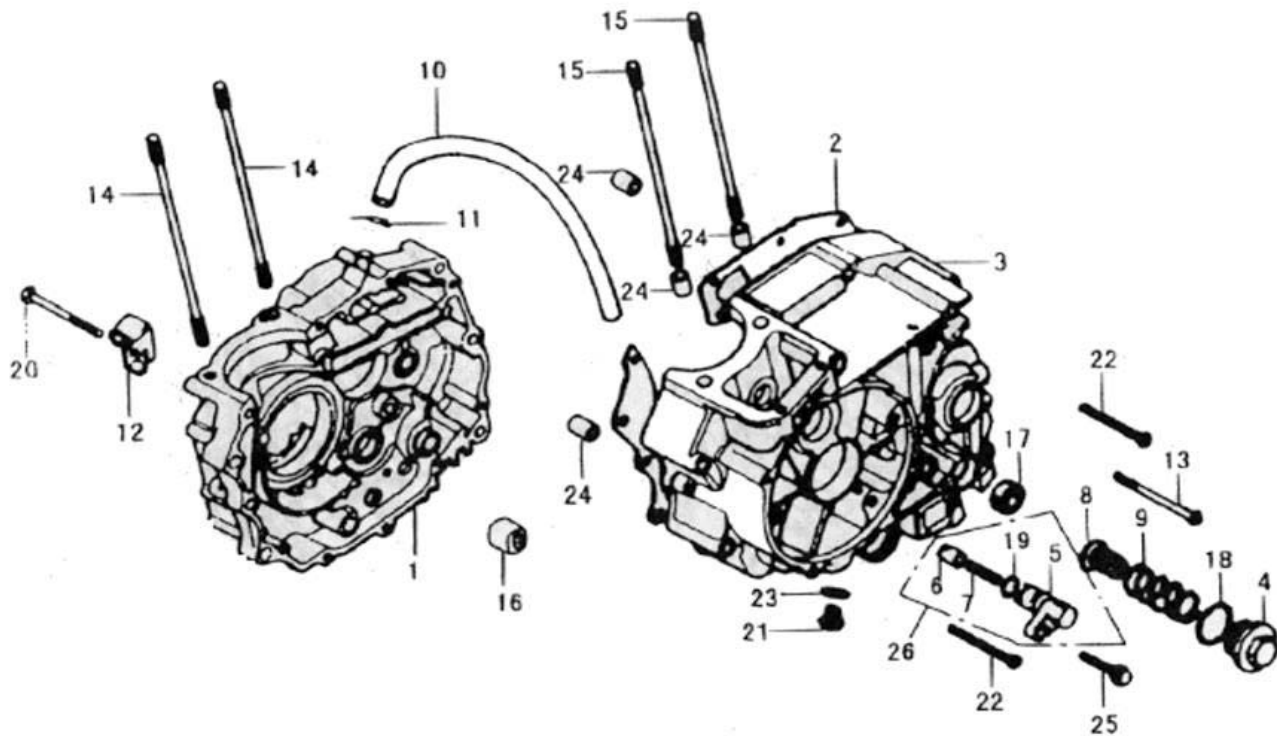


Figure No.	Reference No.	Part No.	Description	Quantity
E04	1	1110000-315D-30	Right Crankcase Component	1
E04	2	1111001-315D-30	Gasket	1
E04	3	1120000-315D-30	Left Crankcase Component	1
E04	4	1545002-315D-30	Engine Oil Gauge Filter Cover	1
E04	5	1122001-315D-30	Pin-keeping Block	1
E04	6	1122002-315D-30	Pin	1
E04	7	1122003-315D-30	Spring	1
E04	8	1561000-315D-30	Engine Gauge Filter Component	1
E04	9	1545003-305D-30	Spring	1
E04	10	1123001-315D-30	Exhaust Pipe	1
E04	11	1123002-315D-30	Clip	1
E04	12	2282002-315D-30	Adjusting Support For Clutch Cable	1
E04	13	GB/T 5787-1986	Bolt M6 x 95	1
E04	14	1211004-315D-30	Stud A	2
E04	15	1211005-315D-30	Stud B	2
E04	16	1113000-315D-30	Needle Bearing HK152312	1
E04	17	2414000-315D-30	Oil Sealing 14 x 28 x 7	1
E04	18	1545001-315D-30	O-ring 35.5 x 3	1
E04	19	1122004-315D-30	O-ring 12 x 2.5	1
E04	20	GB/T 5787-1986	Bolt M6 x 55	1
E04	21	1121001-315D-30	Drain Plug	1
E04	22	GB/T 5787-1986	Bolt M6 x 50	9
E04	23	1121002-315D-30	Washer For Drain Plug	1
E04	24	1111002-315D-30	Set Pin 10 x 40	2
E04	25	GB/T 5787-1986	Bolt M6 x 25	1
E04	26	1122000-315D-30	Pin-keeping Body	1

Figure E05

Oil Pump and Oil Filter

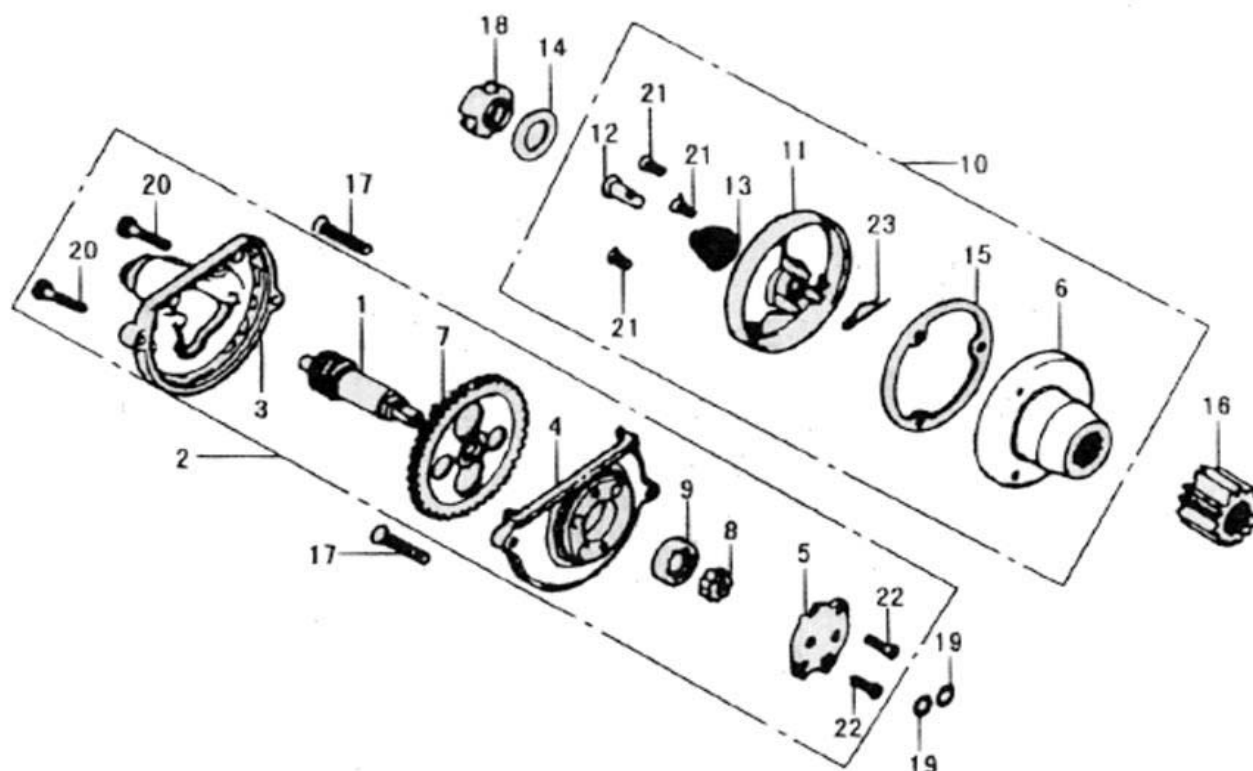


Figure No.	Reference No.	Part No.	Description	Quantity
E05	1	1511008-315D-30	Pump Shaft	1
E05	2	1510000-315D-30	Oil Pump Assembly	1
E05	3	1511010-315D-30	Gear Hood	1
E05	4	1511001-315D-30	Pump Body	1
E05	5	1511013-315D-30	Pump Cover	1
E05	6	1541003-315D-30	Filter Body	1
E05	7	1521004-315D-30	Driven Gear	1
E05	8	1511006-315D-30	Inner Rotator	1
E05	9	1511007-315D-30	Outer Rotator	1
E05	10	1541000-315D-30	Filter Assembly	1
E05	11	1541004-315D-30	Filter Cover	1
E05	12	1541006-315D-30	Oil Pipe	1
E05	13	1541007-315D-30	Spring	1
E05	14	1541010-315D-30	Thrust Washer	1
E05	15	1541005-315D-30	Gasket	1
E05	16	2131001-315D-30	Driven Gear	1
E05	17	GB/T 819.1-2000	Screw M6 x 30	2
E05	18	1541007-315D-30	Nut	1
E05	19	1511005-315D-30	O-ring	1
E05	20	GB/T 5782-2000	Bolt M5 x 20	2
E05	21	GB/T 819.1-2000	Screw M5 x 12	3
E05	22	GB/T 820-2000	Screw M4 x 12	3
E05	23	1541002-315D-30	Limit Pin	1

Figure E06

Starting Motor

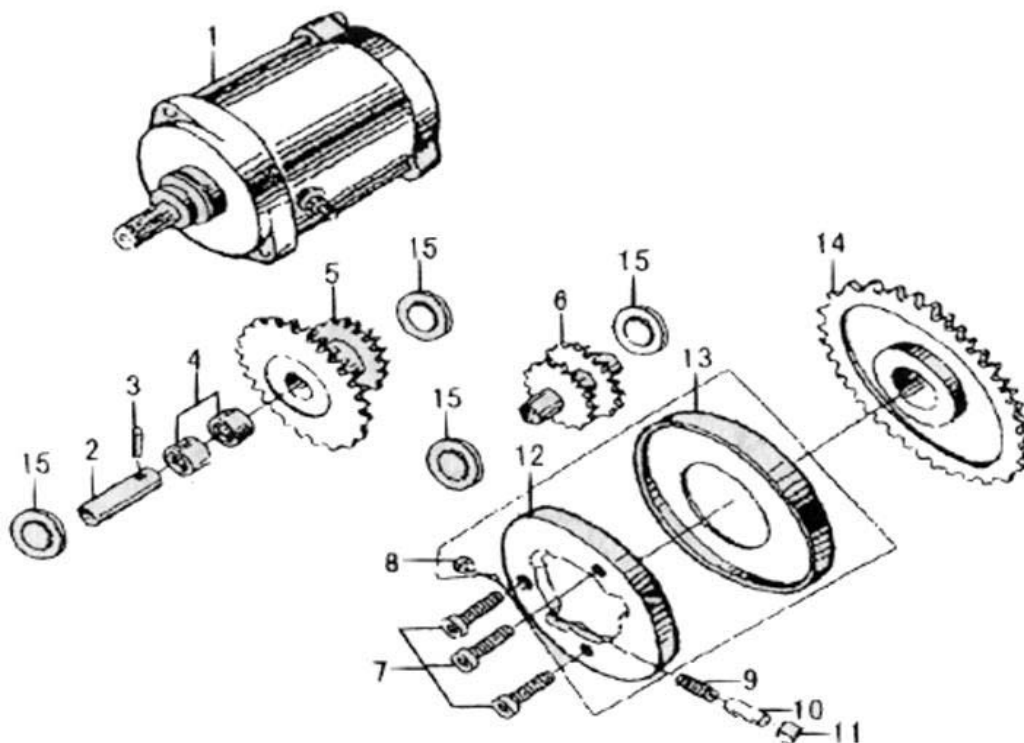


Figure No.	Reference No.	Part No.	Description	Quantity
E06	1	3470000-315D-30	Starter Motor Assembly	1
E06	2	2831004-315D-30	Shaft	1
E06	3	2812006-315D-30	Pin A3 x 16	1
E06	4	2841004-315D-30	Needle Bearing HK101410	2
E06	5	2831001-315D-30	Double Gears No.1	1
E06	6	2831005-315D-30	Double Gears No. 2	1
E06	7	GB/T 5783-2000	Bolt M6 x 12	3
E06	8	2812009-315D-30	Plug	3
E06	9	2812001-315D-30	Spring	3
E06	10	2812002-315D-30	Spring Socket	3
E06	11	2812004-315D-30	Roller	3
E06	12	2812007-315D-30	Starter Clutch	1
E06	13	2812008-315D-30	Guard Shield	1
E06	14	2831002-315D30	Gear Assembly	1
E06	15	2831003-315D-30	Washer 10	4

Figure E07

Magneto

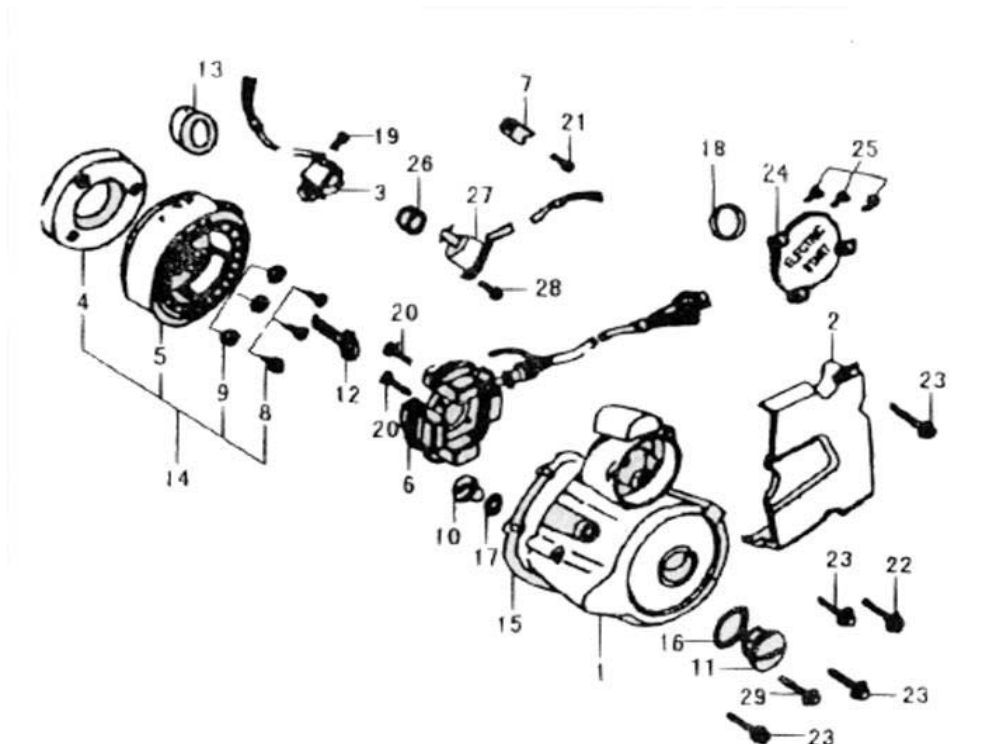


Figure No.	Reference No.	Part No.	Description	Quantity
E07	0		Magneto Assembly	
E07	1	1141003-315D-30	Left Crankcase Cover	1
E07	2	1141001-315D-30	Rear Left Cover	1
E07	3	3114000-315D-30	Induced Coil	1
E07	4	2811000-315D-30	Start Clutch Body	1
E07	5	3111000-315D-30	Magneto Rotor Assembly	1
E07	6	3112000-315D-30	Magneto Stator Assembly	1
E07	7	3191003-315D-30	Wire Clamp	1
E07	8	GB/T 70.1-2000	Screw M8 x 30	3
E07	9	GB/T 93-1987	Spring Washer 8	3
E07	10	1142003-315D-30	Plug For Watch Hole	1
E07	11	1142002-315D-30	Plug For Watch Hole	1
E07	12	3191002-315D-30	Lock Bolt	1
E07	13	1316000-315D-30	Left Oil Seal For Crankshaft 50 x 34 x 7	1
E07	14	1142006-315D-30	Gasket Left Crankcase Cover	1
E07	15			1
E07	16	1142004-315D-30	O-ring For Plug 27.5 x 2.5	1
E07	17	1142005-315D-30	O-ring Watch Hole Plug 13.8 x 2.5	1
E07	18	1142008-315D-30	O-ring 63 x 3	1
E07	19	GB/T 818-2000	Screw M5 x 16	2
E07	20	GB/T 818-2000	Screw M5 x 30	3
E07	21	GB/T 5787-1986	Bolt M6 x 12	1
E07	22	GB/T 5787-1986	Bolt M6 x 25	2
E07	23	GB/T 5787-1986	Bolt M6 x 40	6
E07	24	1142007-315D-30	Upper Cover	1
E07	25	GB/T 5787-1986	Screw M6 x 20	3
E07	26	3574000-315D-30	Neutral Indicator Oil Seal	1
E07	27	3572000-315D-30	Neutral Indicator Oil Seal	1
E07	28	GB/T 5787-1986	Screw M6 x 12	1
E07	29	GB/T 5787-1986	Bolt M6 x 50	2

Figure E08

Clutch Assembly

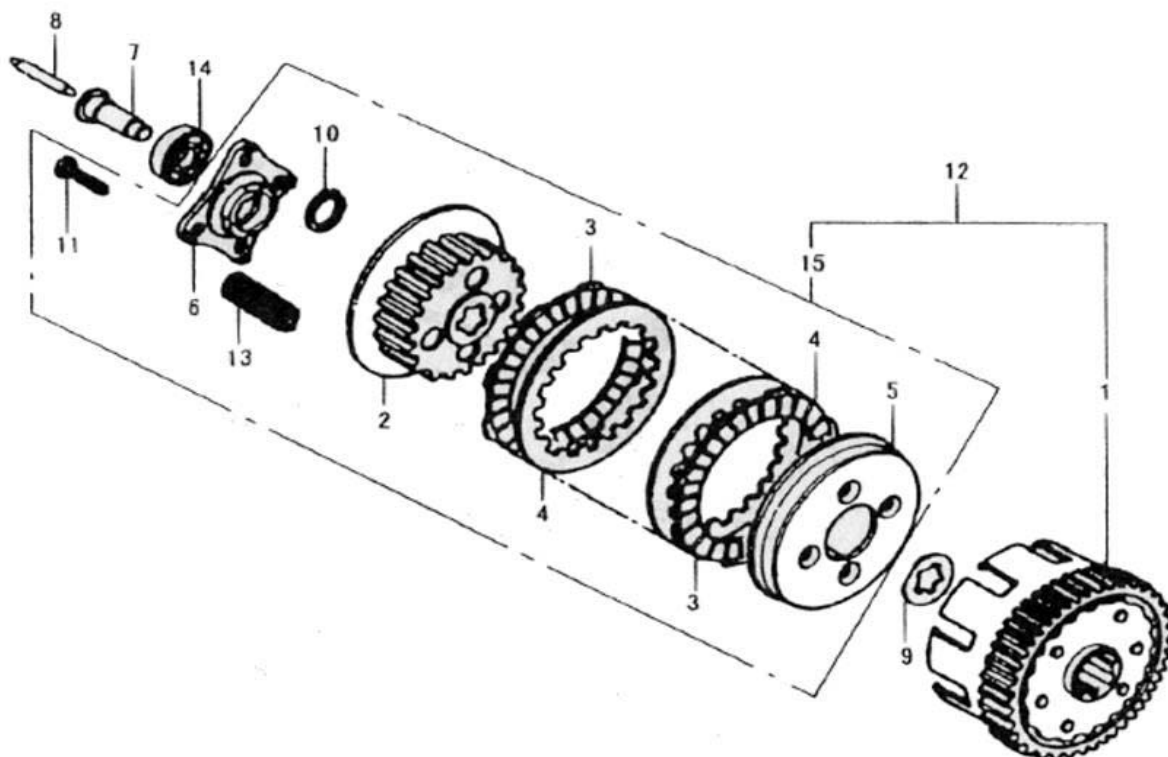


Figure No.	Reference No.	Part No.	Description	Quantity
E08	0		Clutch Assembly	
E08	1	2210000-315D-30	Clutch Active Disc Component	1
E08	2	2231000-315D-30	Clutch Driven Disc Component	1
E08	3	2212000-315D-30	Clutch Drive Plate Component	5
E08	4	2231001-315-30	Clutch Driven Plate Component	4
E08	5	2231002-315D-30	Locating Plate	1
E08	6	2231004-315D-30	Clutch End Cover	1
E08	7	2282003-315D-30	Pull Rod	1
E08	8	2282004-315D-30	Rod	1
E08	9	2232002-315D-30	Washer	1
E08	10	2232007315D-30	Circlip 17	1
E08	11	GB/T 5783-2000	Bolt M6 x 35	4
E08	12	2200000-315D-30	Clutch Component	1
E08	13	2231005-315D-30	Spring	4
E08	14	2233000-315D-30	Bearing 6001	1
E08	15	2230000-315D-30	Clutch Disc Component	1

Figure E09

Crankshaft and Piston

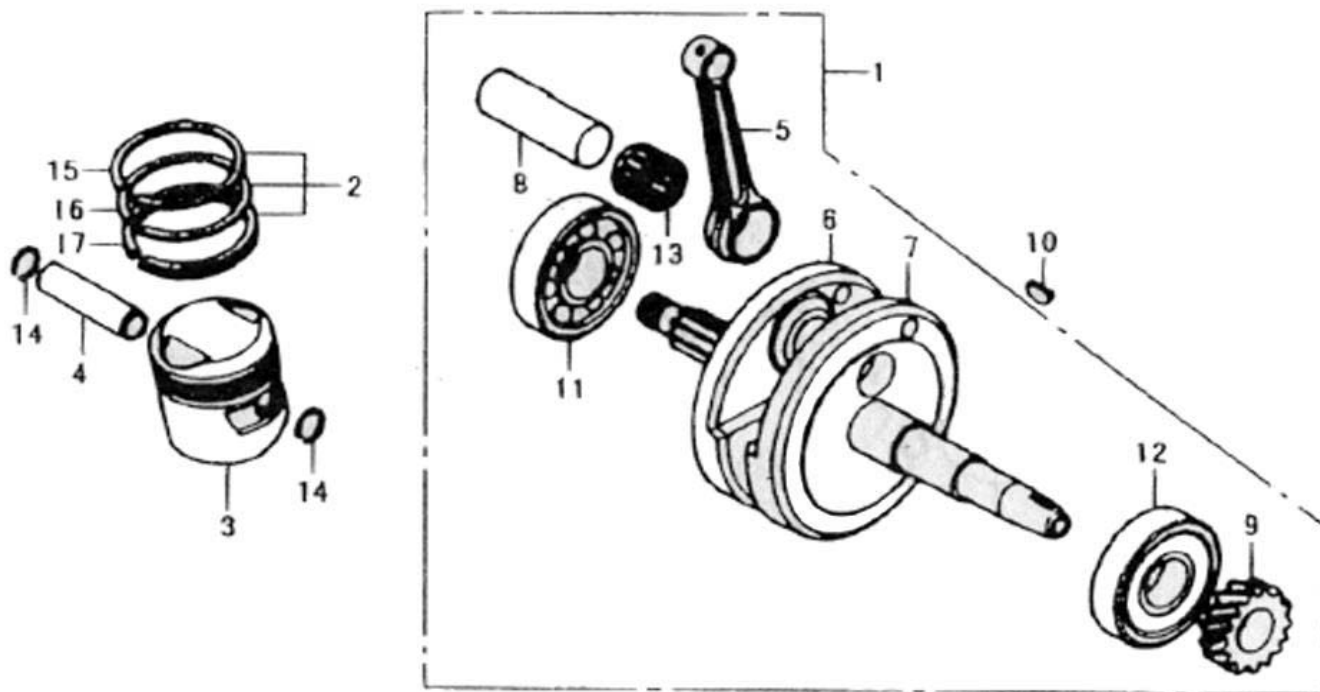


Figure No.	Reference No.	Part No.	Description	Quantity
E09	1	1310000-315D-30	Crankshaft Assembly	1
E09	2	1330000-315D-30	Piston Ring	1
E09	3	1321001-315D-30	Piston	1
E09	4	1321002-315D-30	Piston Pin	1
E09	5	1311004-315D-30	Tie Rod	1
E09	6	1311001-315D-30	Right Crankshaft	1
E09	7	1311002-315D-30	Left Crankshaft	1
E09	8	1311005-315D-30	Crankshaft Pin	1
E09	9	1311006-315D-30	Timing Drive Gear	1
E09	10	1311003-315D-30	Key	1
E09	11	1314000-315D-30	Bearing	1
E09	12	1315000-315D-30	Bearing	1
E09	13	1312000-315D-30	Roller Bearing	1
E09	14	1321003-315D-30	Circlip	2
E09	15	1331001-315D-30	Piston Ring No. 1	1
E09	16	1331002-315D-30	Piston Ring No. 2	1
E09	17	1332000-315D-30	Piston Ring Combination	1

Figure E10

Transmission

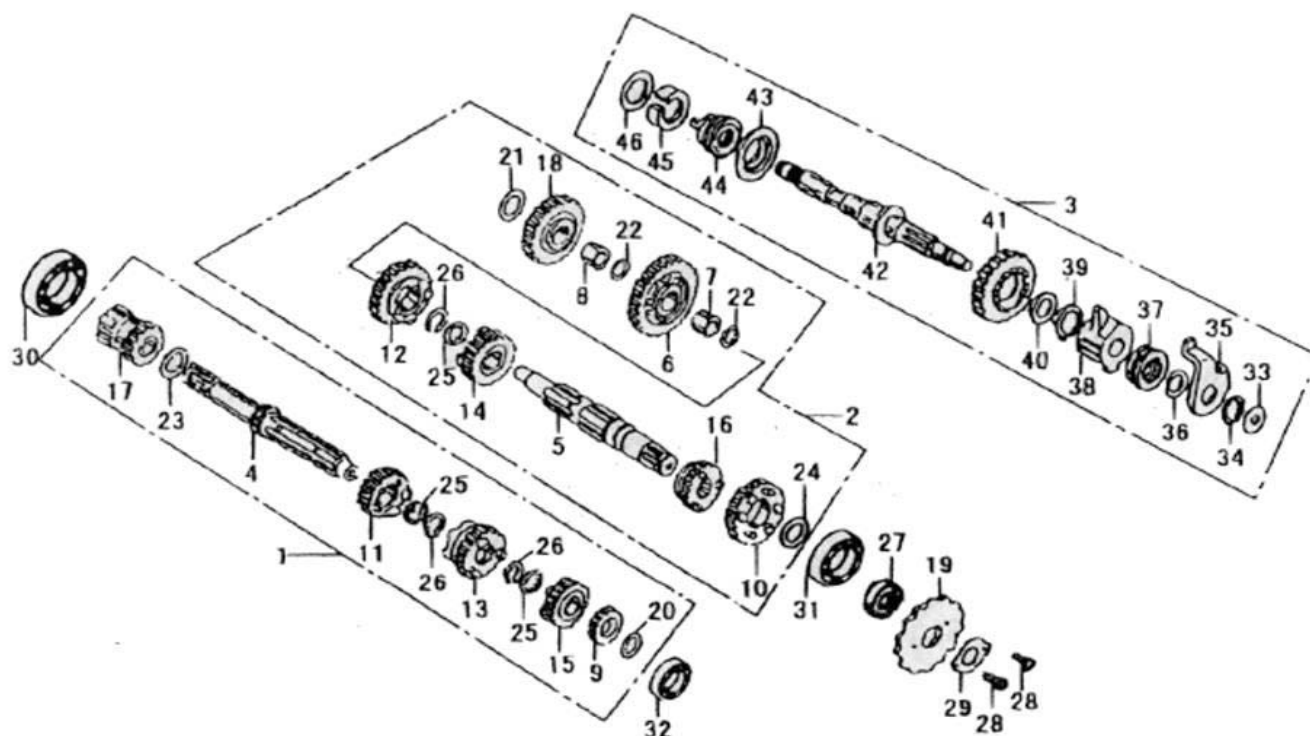


Figure No.	Reference No.	Part No.	Description	Quantity
E10	1	2360000-315D-30	Main Shaft Combination	1
E10	2	2370000-315D-30	Countershaft Combination	1
E10	3	2710000-315D-30	Start Shaft Combination	1
E10	4	2361001-315D-30	Main Shaft Combination	1
E10	5	2371001-315D-30	Countershaft Combination	1
E10	6	2371002-315D-30	First Gear, Countershaft	1
E10	7	2371003-315D-30	Bushing	1
E10	8	2371001-315D-30	Bushing	1
E10	9	2361002-315D-30	Second Gear, Main Shaft	1
E10	10	2371004-315D-30	Second Gear, Countershaft	1
E10	11	2361003-315D-30	Third Gear, Main Shaft	1
E10	12	2371005-315D-30	Third Gear, Countershaft	1
E10	13	2361004-315D-30	Fourth Gear, Main Shaft	1
E10	14	2371006-315D-30	Fourth Gear, Countershaft	1
E10	15	2361005-315D-30	Fifth Gear, Main Shaft	1
E10	16	2371007-315D-30	Fifth Gear, Countershaft	1
E10	17	2363000-315D-30	Driven Gears For Start	1
E10	18	2373000-315D-30	Conveying Gears For Start	1
E10	19	2374001-315D-30	Output Sprocket (Front Wheel Sprocket)	1
E10	20	2372003-315D-30	Spring Washer	1
E10	21	2373004-315D-30	Washer	1
E10	22	2372002-315D-30	Washer	1
E10	23	2362002-315D-30	Spring Washer	2
E10	24	2372003-315D-30	Washer	1
E10	25	2362004-315D-30	Spring Washer	1

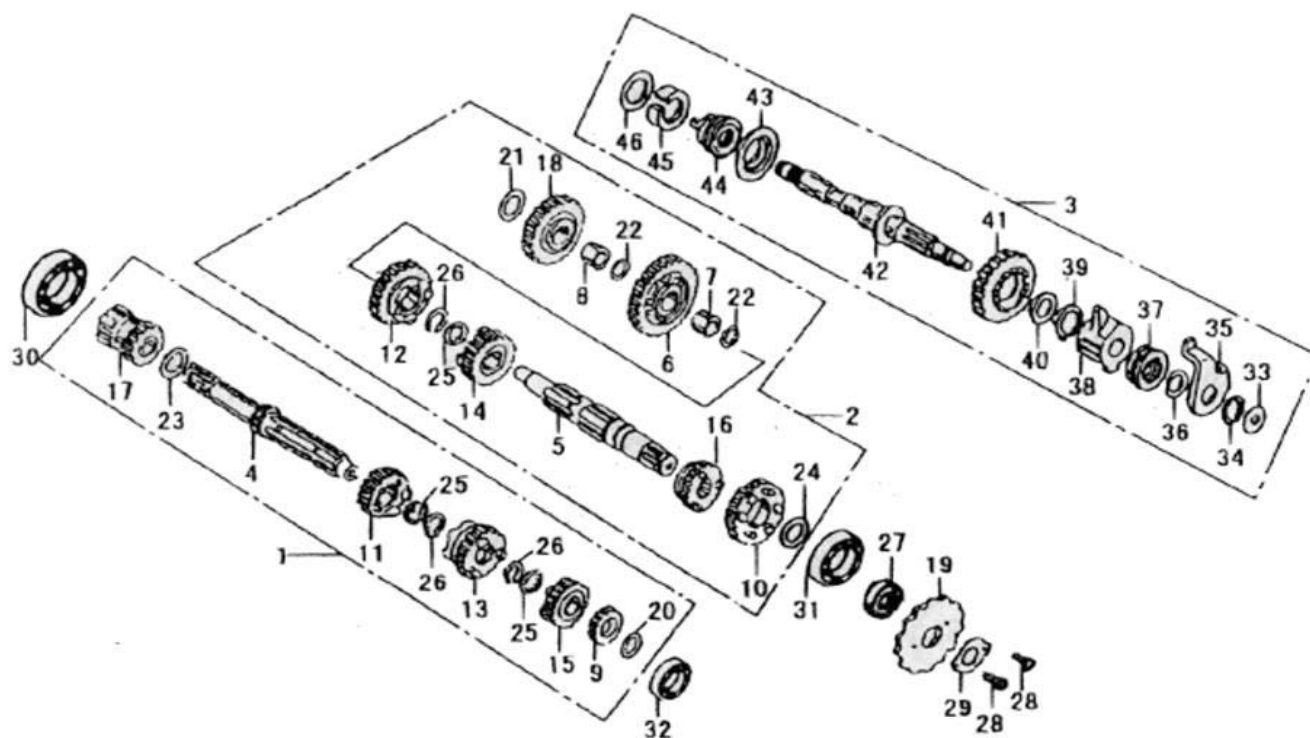


Figure No.	Reference No.	Part No.	Description	Quantity
E10	26	2362001-315D-30	Circlip	3
E10	27	2375000-315D-30	Oil Seal 20 x 34 x 7	3
E10	28	GB/T 5783-2000	Bolt M6 x 10	1
E10	29	2374002-315D-30	Locating Plate For Sprocket	1
E10	30	1112000-315D-30	Bearing 6101	1
E10	31	1125000-315D-30	Bearing 6204	1
E10	32	1124000-315D-30	Bearing 6202	1
E10	33	2711016-315D-30	Washer No. 3	1
E10	34	2711017-315D-30	Circlip	1
E10	35	2712000-315D-30	Ratchet Guide Component	1
E10	36	2711015-315D30	Washer No.3	1
E10	37	2711004-315D-30	Spring Washer	1
E10	38	2711003-315D-30	Start Ratchet	1
E10	39	2711011-315D-30	Circlip	1
E10	40	2711007-315D-30	Washer No.1	1
E10	41	2711002-315D-30	Starting Gear	1
E10	42	2711001-315D-30	Starting Shaft	1
E10	43	2711009-315D-30	Spring Base	1
E10	44	2711010-315D-30	Reset Spring	1
E10	45	2711012-315D-30	Sleeve	1
E10	46	2711017-315D30	Washer No. 4	1

Figure E11

Gearshift Device

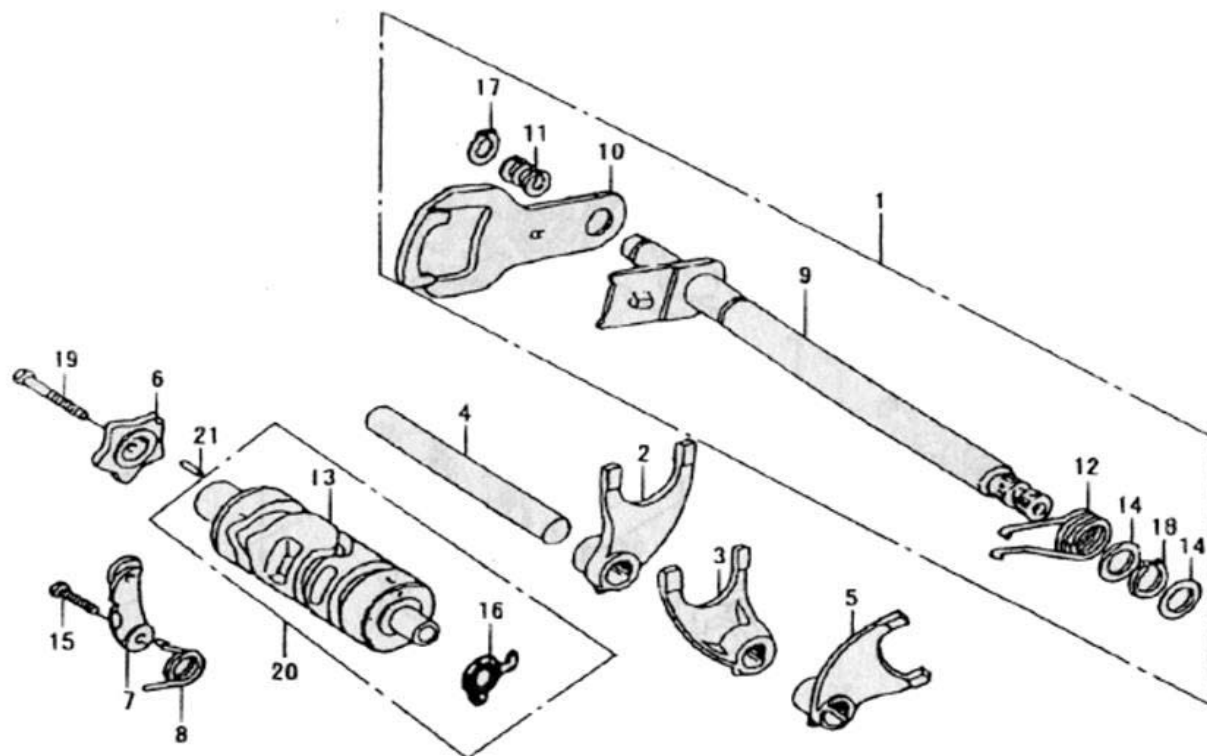


Figure No.	Reference No.	Part No.	Description	Quantity
E11	1	2410000-315D-30	Gearshift Shaft Component	1
E11	2	2441001-315D-30	Fork 1	1
E11	3	2441002-315D-30	Fork 2	1
E11	4	2441004-315D-30	Fork Shaft	1
E11	5	2441003-315D-30	Fork 3	1
E11	6	2431001-315D-30	Cam	1
E11	7	2431000-315D-30	Limit Block	1
E11	8	2431003-315D-30	Spring	1
E11	9	2411000-315D-30	Shaft Component	1
E11	10	2412001-315D-30	Plate	1
E11	11	2412002-315D-30	Spring	1
E11	12	2413001-315D-30	Reset Spring	1
E11	13	2421001-315D-30	Drum	1
E11	14	2412008-315D-30	Washer	2
E11	15	GB/T 5783-2000	Bolt M6 x 20	1
E11	16	3571004-315D-30	Contacting Piece	1
E11	17	2412007-315D-30	Circlip 12	1
E11	18	2412006-315D-30	Circlip 12	1
E11	19	GB/T 5783-2000	Bolt M6 x 25	1
E11	20	2421000-315D-30	Gearshift Cam Component	1
E11	21	2431002-315D-30	Set Pin B4 x 10	1

Figure E12

Carburetor

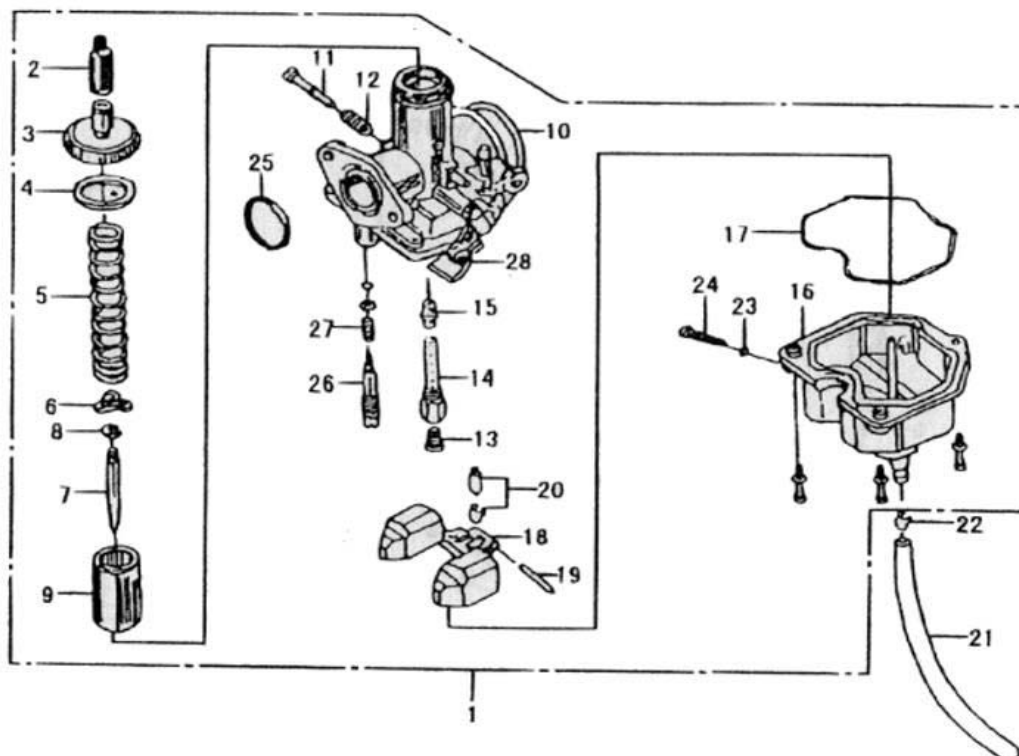


Figure No.	Reference No.	Part No.	Description	Quantity
E12	1	1610000-837-00	Carburetor Assembly	1
E12	2	1611008-837-00	Dust Cap	1
E12	3	1611002-837-00	Upper Cover	1
E12	4	1611007-837-00	Gasket Upper Cover	1
E12	5	1611021-837-00	Spring	1
E12	6	1611006-837-00	Clip	1
E12	7	1611004-837-00	Oil Needle	1
E12	8	1611005-837-00	Circlip	1
E12	9	1611003-837-00	Valve	1
E12	10	1611000-837-00	Carburetor Body	1
E12	11	1611014-837-00	Adjusting Screw, Idle Speed	1
E12	12	1611017-837-00	Spring, Adjusting Screw	1
E12	13	1611024-837-00	Main Measuring Hole	1
E12	14	1611025-837-00	Main Nozzle	1
E12	15	1611026-837-00	Main Jet	1
E12	16	1612001-837-00	Body, Float Chamber	1
E12	17	1612002-837-00	Gasket Upper Cover	1
E12	18	1612005-837-00	Float	1
E12	19	1612004-837-00	Float Pin	1
E12	20	1612007-837-00	Float Needle	1
E12	21	1612008-837-00	Drain Tube	1
E12	22	1612009-837-00	Clip	1
E12	23	1611013-837-00	Sealing Ring	1
E12	24	1611012-837-00	Drain Screw	1
E12	25	1611009-837-00	O-ring	1
E12	26	1611010-837-00	Adjusting Screw, Mixture	1
E12	27	1611011-837-00	Spring, Adjusting Screw	1
E12	28	1611029-837-00	Handle Choke	1

Figure F01

Headlight Assembly

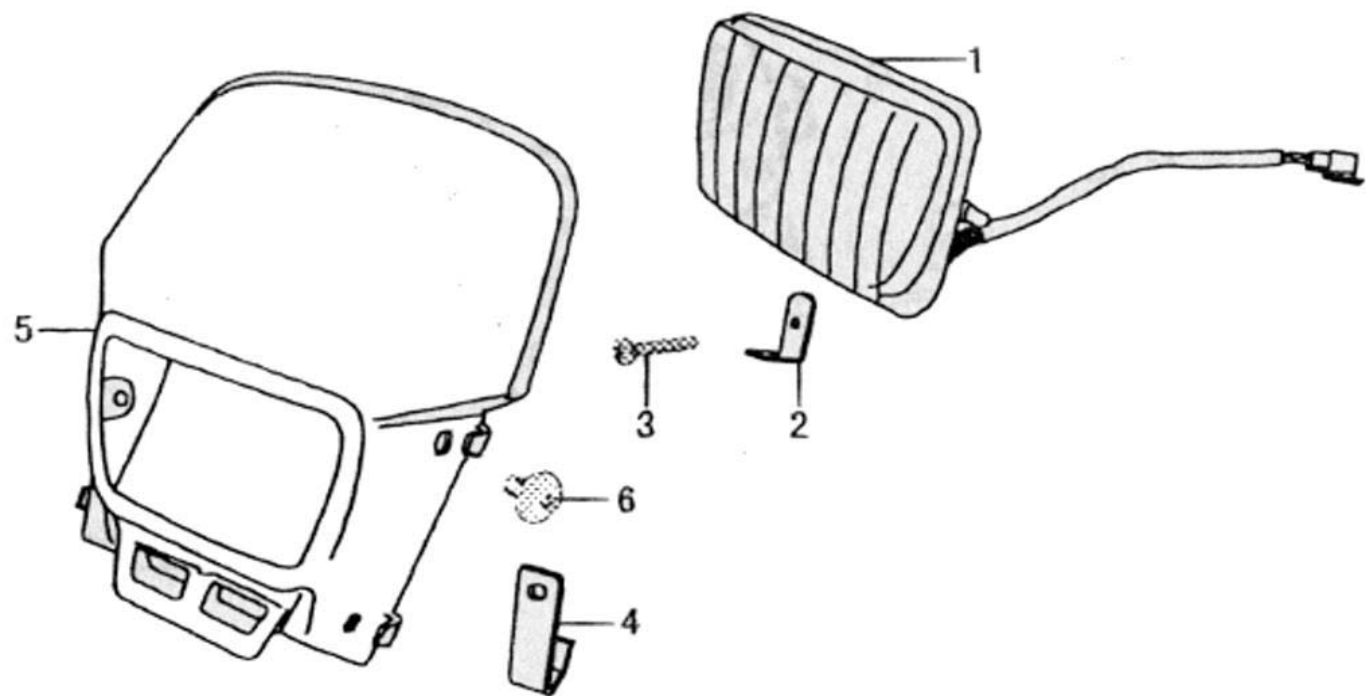


Figure No.	Reference No.	Part No.	Description	Quantity
F01	1	3310000-837-00	Headlight Assembly	1
F01	2	5141001-837-00	Stay Headlight	1
F01	3	GB/T 818-1985	Bolt M5 x 40	1
F01	4	4110027-837-00	Lower Bracket	1
F01	5	4311001-837-00	Headlight Cover (painted)	1
F01	6	9111011-837-00	Bolt M6 x 20	2

Figure F02

Meter

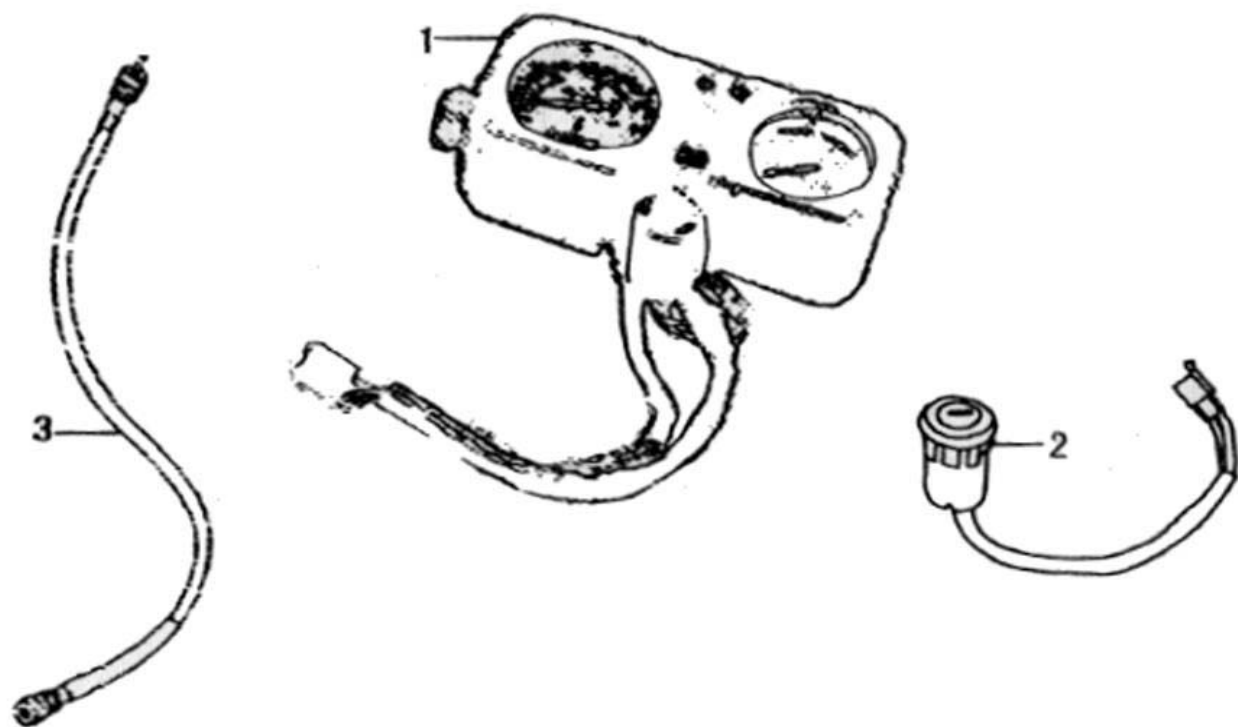


Figure No.	Reference No.	Part No.	Description	Quantity
F02	1	3700000-837-00	Combination Meter Assembly	1
F02	2	3540000-837-00	Ignition Switch	1
F02	3	4670000-837-20	Speedometer Cable	1

Figure F03

Handle Grips, Switches, and Cables

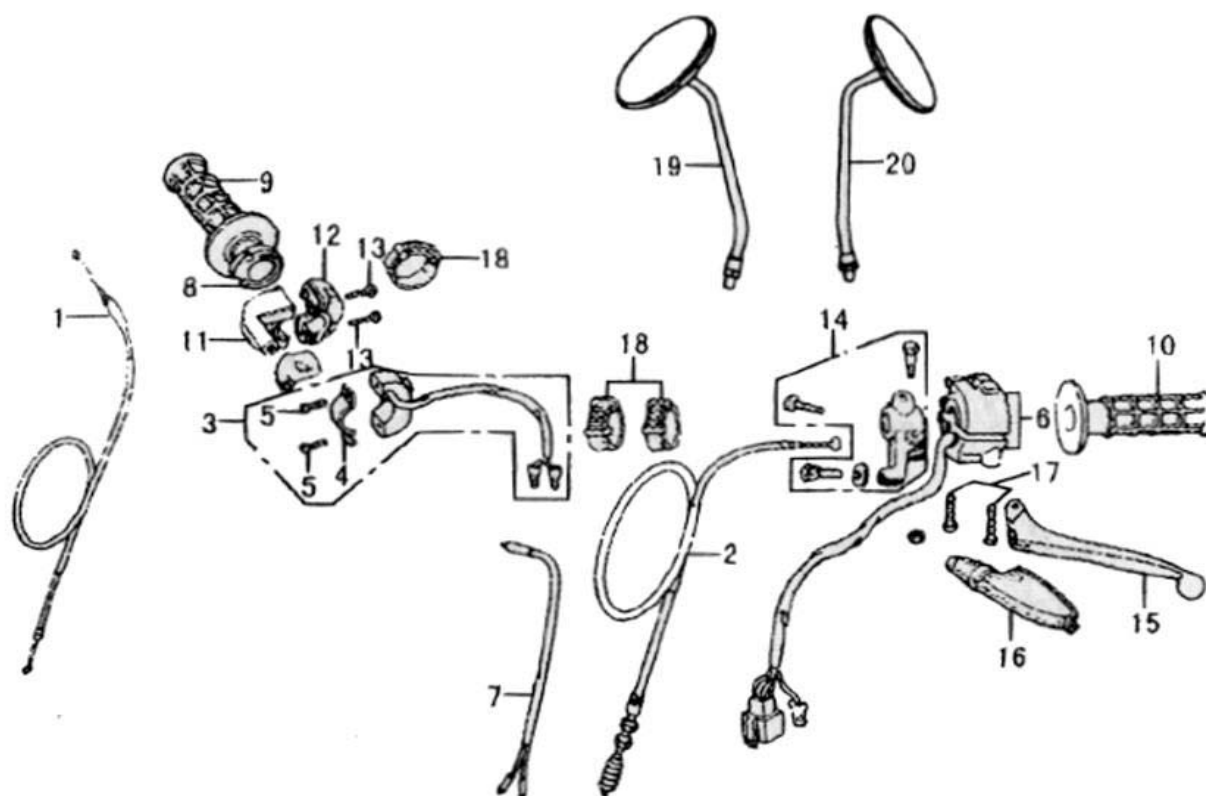


Figure No.	Reference No.	Part No.	Description	Quantity
F03	1	4631000-837-10	Throttle Cable	1
F03	2	4620000-837-10	Clutch Cable	1
F03	3	3510000-837-00	Switches, Right Handlebar	1
F03	4	3511000-837-00	Holder Right Handlebar Switches	1
F03	5	GB/T 818-1985	Screw M4 x 12	2
F03	6	3520000-837-00	Switches, Left Handlebar	1
F03	7	4752003-837-00	Front Stoplight Switch	1
F03	8	4731002-837-00	Throttle Grip	1
F03	9	4730000-837-00	Right Handlebar Grip	1
F03	10	4740000-837-00	Left Handlebar Grip	1
F03	11	4731003-738-00	Upper Housing (Throttle Assembly)	1
F03	12	4731004-738-00	Lower Housing	1
F03	13	GB/T 818-1985	Screw M5 x 20	2
F03	14	4762000-837-00	Holder, Clutch Lever	1
F03	15	4760000-703-00	Front Clutch Lever	1
F03	16	461002-837-00	Left Boot	1
F03	17	GB/T 818-19853	Screw M5 x 14	2
F03	18	3211007-837-00	Plastic Band	3
F03	19	5851000-837-20	Right Rear View Mirror	1
F03	20	5852000-837-20	Left Rear View Mirror	1

Figure F04

Handlebar

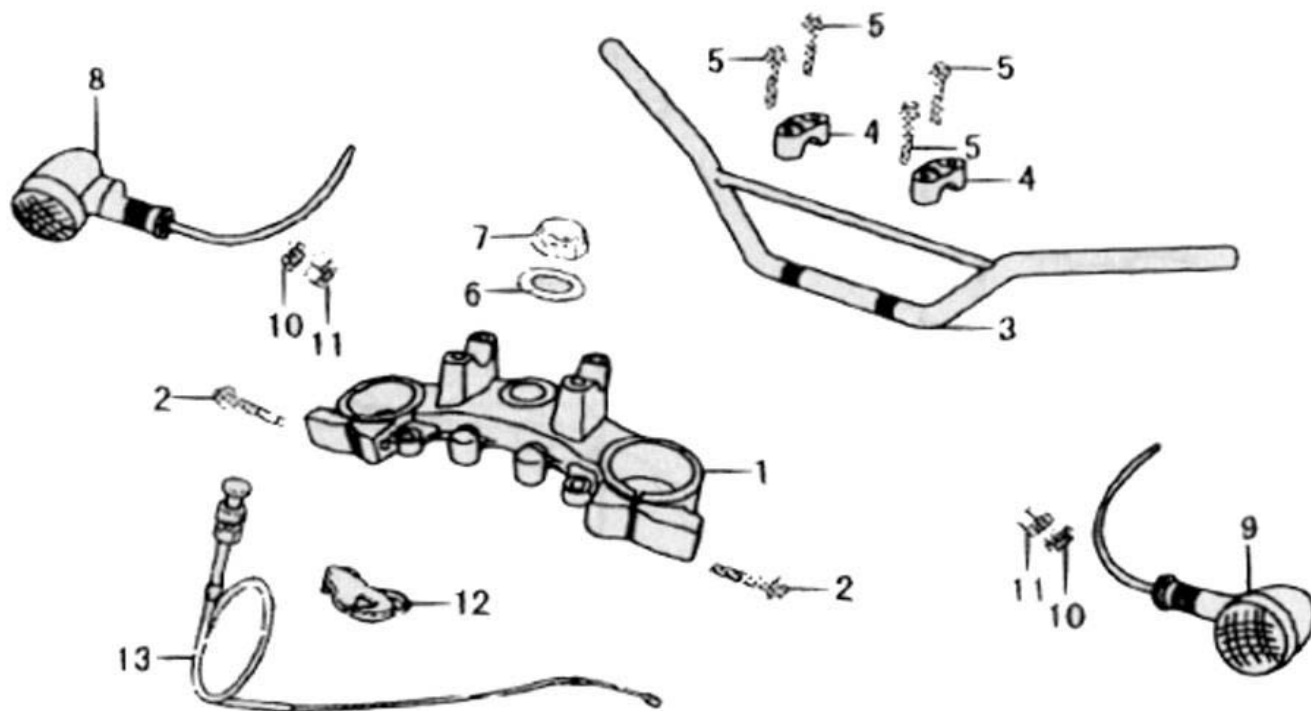


Figure No.	Reference No.	Part No.	Description	Quantity
F04	1	5131000-837-00	Upper Panel (Upper Triple Clamp)	1
F04	2	GB/T 5787-1986	Bolt M8 x 55	1
F04	3	4711004-837-00	Handlebar (Steering Bar)	1
F04	4	4712001-837-10	Mounting Block	1
F04	5	GB/T 5787-1986	Block M8 x 35	1
F04	6	5121004-837-00	Adjusting Washer	4
F04	7	5121005-837-00	Lock Nut	2
F04	8	3361001-837-00	Front Right Turn Light	1
F04	9	3361005-837-00	Front Left Turn Light	1
F04	10	GB/T 93-1987	Washer 6	2
F04	11	GB/T 6170-1986	Nut M6	2
F04	12	3592002-837-00	Clip, Choke Cable	1
F04	13	4632000-837-00	Choke Cable	1

Figure F05

Front Shock Absorber

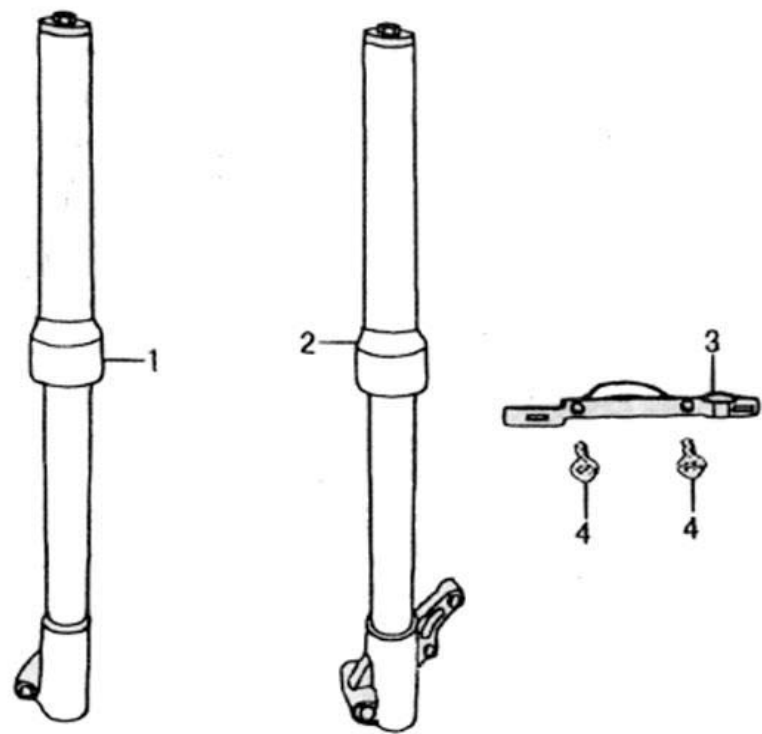


Figure No.	Reference No.	Part No.	Description	Quantity
F05	1	5240000-837-30	Front Shock Absorber, Right	1
F05	1	5240000-837-30-GY-2	Front Shock Absorber, Right (GY-2 inverted)	1
F05	2	5250000-837-30	Front Shock Absorber, Left	1
F05	2	5250000-837-30-GY-2	Front Shock Absorber, Left (GY-2 inverted)	1
F05	3	5371001-738-00	Front License Plate Bracket	1
F05	4	GB/T 5787-1986	Bolt M6 x 12	2

Figure F06

Steering Stem

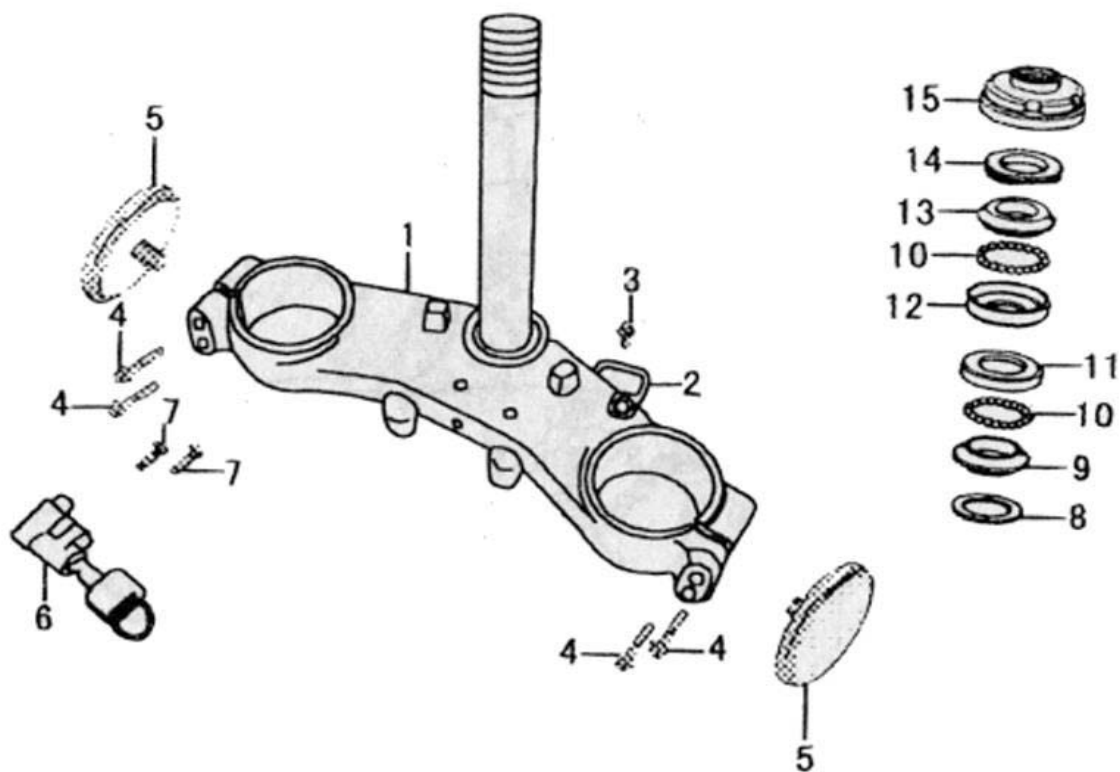


Figure No.	Reference No.	Part No.	Description	Quantity
F06	1	5120000-837-20	Steering Stem Component	1
F06	2	5671001-837-00	Wire Clip	1
F06	3	GB/T 5787-1986	Bolt M6 x 16	1
F06	4	GB/T 5787-1986	Bolt M8 x 35	4
F06	5	3381000-837-00	Front Reflector	1
F06	6	4810000-837-00	Steering Lock	1
F06	7	GB/T 819-1985	Screw M6 x 12	4
F06	8	5121002-837-00	Lower Washer	1
F06	9	5171004-834-00	Lower Cover, Lower Bearing	1
F06	10	5171005-834-00	Steel Ball	40
F06	11	5171003-834-00	Upper Cover, Lower Bearing	1
F06	12	5171002-834-00	Lower Cover, Upper Bearing	1
F06	13	5171001-834-00	Upper Cover, Upper Bearing	1
F06	14	5121001-834-00	Dust Ring	1
F06	15	5121003-834-00	Adjusting Nut	1

Figure F07

Front Fender

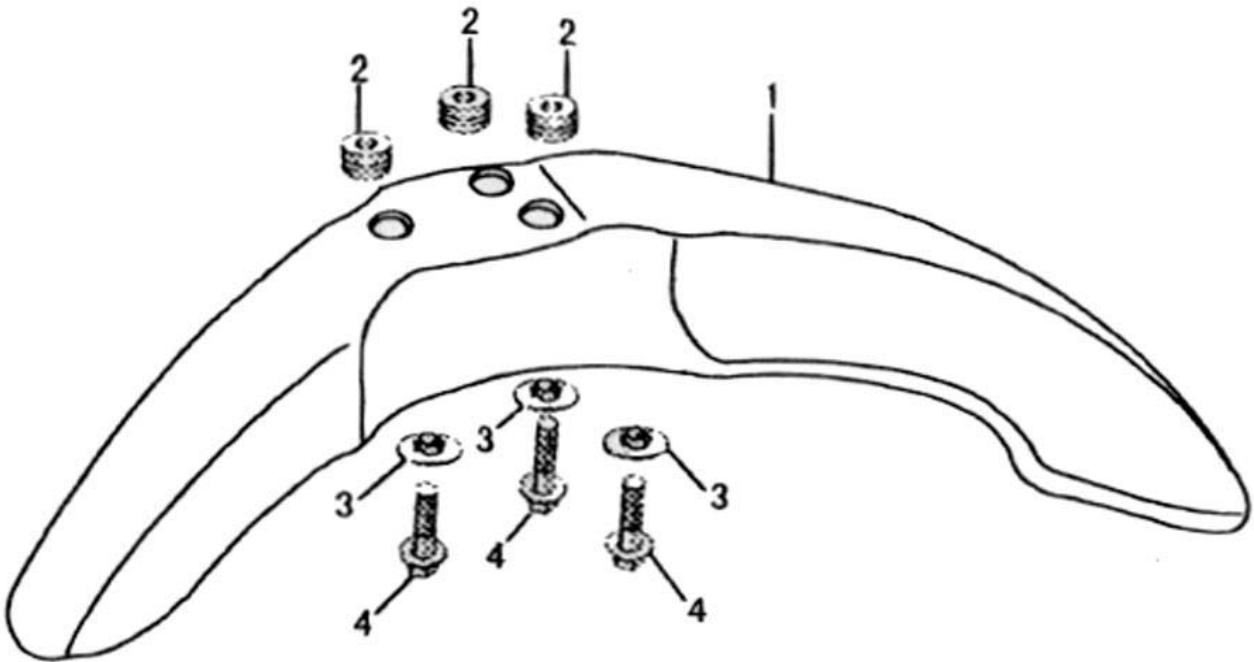


Figure No.	Reference No.	Part No.	Description	Quantity
F07	1	5310000-837-00	Front Fender (painted)	1
F07	2	5351005-837-10	Cushion, Front Fender	3
F07	3	9111001-837-00	Bushing	3
F07	4	GB/T 5787-1986	Bolt M6x 35	3

Figure F08

Front Wheel

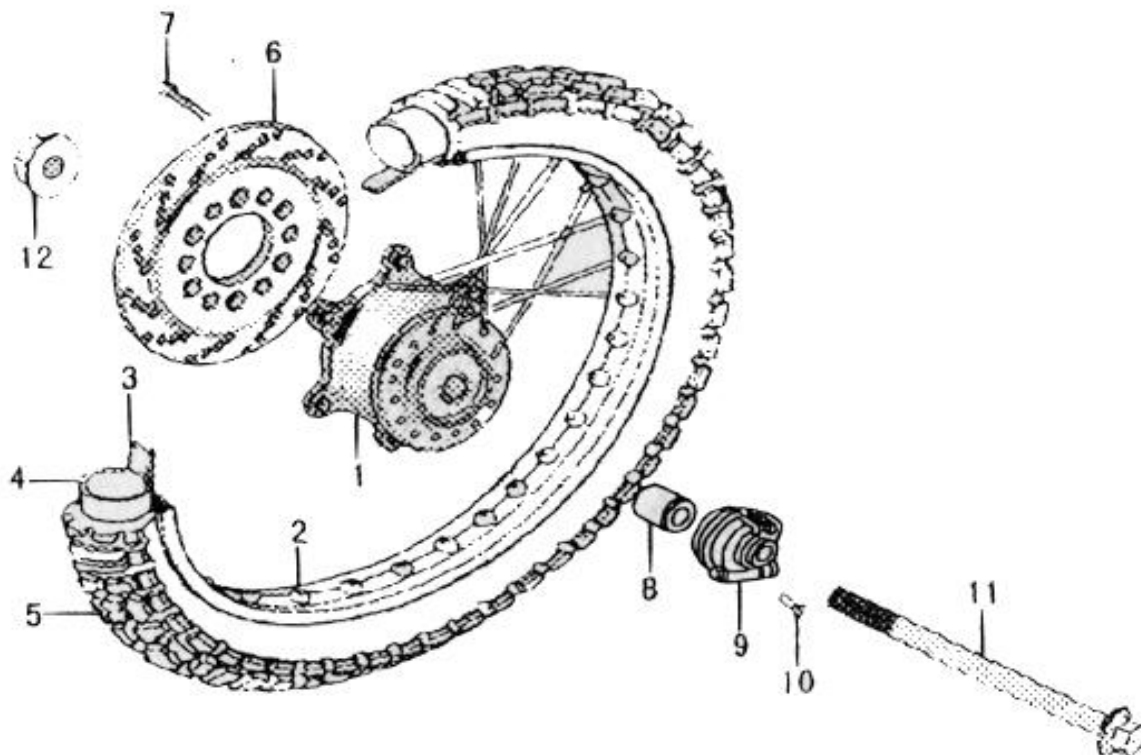


Figure No.	Reference No.	Part No.	Description	Quantity
F08	1	5461000-837-10	Hub Assembly, Front Wheel	1
F08	2	5460000-837-10	Rim Assembly, Front Wheel	1
F08	3	5462001-837-10	Flap, Front Tire	1
F08	4	5480000-837-10	Inner Tube, Front Tire	1
F08	5	5470000-837-10	Tire, Front	1
F08	6	5631001-837-00	Front Brake Disc	1
F08	7	5631002-837-00	Bolt, Front Brake Disc	6
F08	8	6431003-837-10	Left Bushing	1
F08	9	5550000-837-00	Speedo Drive Assembly (Box Assembly, Speedometer)	1
F08	10	GB/T 820-1985	Screw M6 x 12	1
F08	11	5431001-837-30	Front Wheel Axle	1
F08	12	GB/T 6187-1986	Nut M12	1

Figure F09

Front Brake Master Cylinder

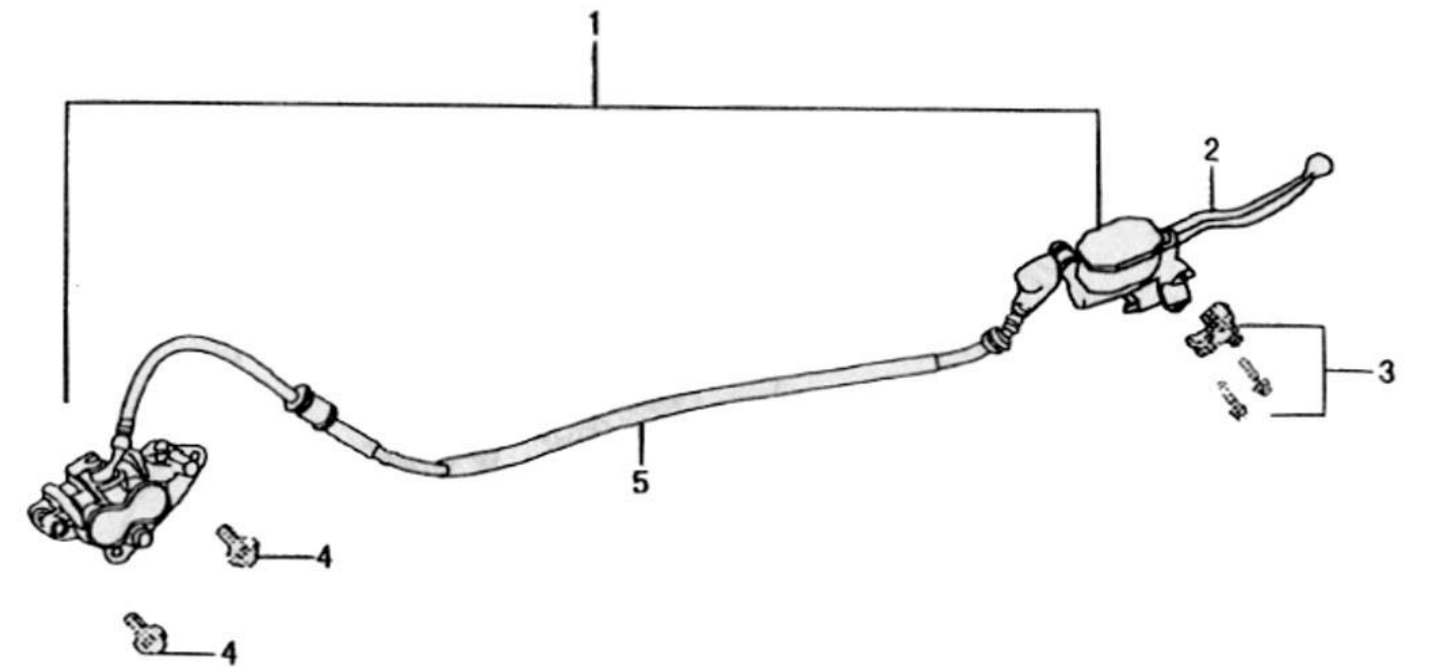


Figure No.	Reference No.	Part No.	Description	Quantity
F09	0		Front Brake Assembly	
F09	1	5600000-837-10	Front Brake Master Cylinder	1
F09	2	4754001-837-00	Front Brake Lever	1
F09	3	5641002-837-100	Holder Master Cylinder	1
F09	4	GB/T 5787-1986	Bolt M8 x 26	2
F09	5	5670000-837-10	Oil Pipe, Front Brake	1

Figure F10

Rear Wheel

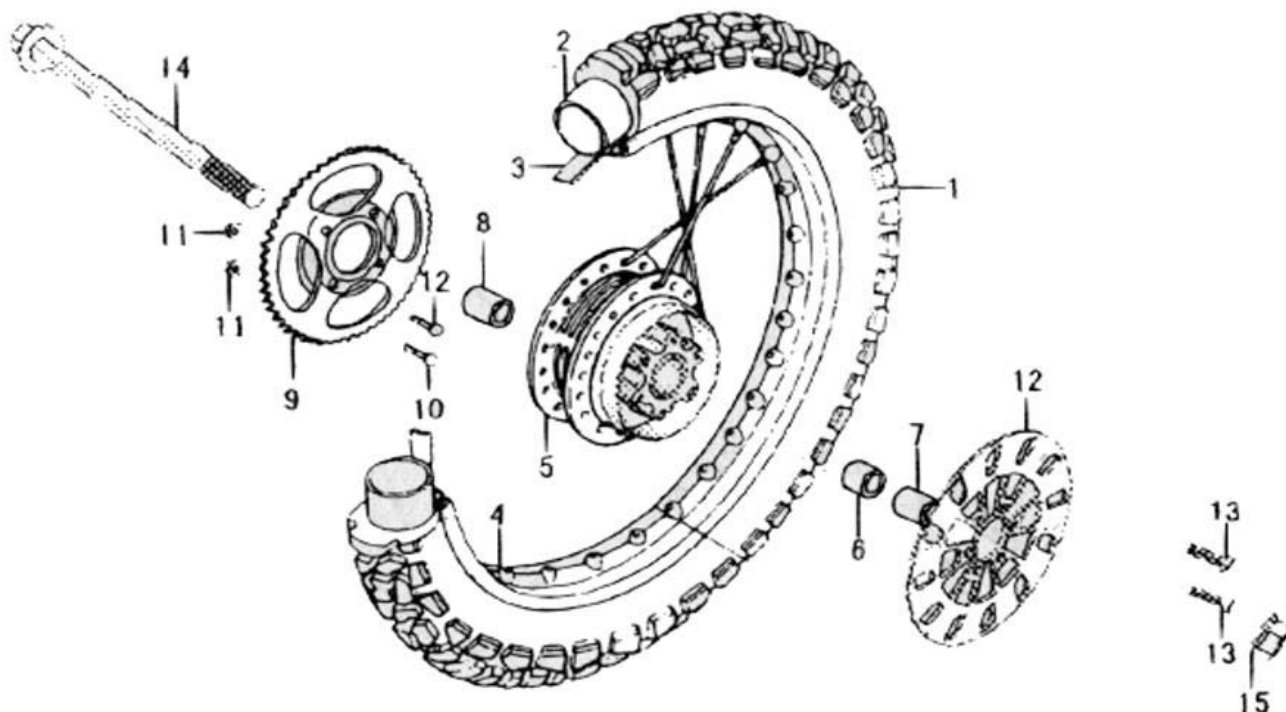


Figure No.	Reference No.	Part No.	Description	Quantity
F10	1	6470000-837-10	Tire, Rear	1
F10	2	6480000-837-10	Inner Tube, Rear Tire	1
F10	3	6481001-837-10	Flap Rear Tire	1
F10	4	6460000-837-10	Rim Assembly, Rear Wheel	1
F10	5	6461000-837-10	Hub Assembly, Rear Wheel	1
F10	6	6431002-837-00	Right Bushing (I)	1
F10	7	6431002-837-30	Right Bushing	1
F10	8	6431003-837-00	Left Bushing	1
F10	9	2951004-837-10	Rear Wheel Sprocket	1
F10	10	9111032-837-00	Bolt M10 x 1.25 x 37.5	4
F10	11	GB/T 6187-1986	Nut M10 x 1.25	4
F10	12	6331001-837-00	Rear Disc Brake	1
F10	13	GB/T 5783-1986	Bolt M10 x 28	6
F10	14	6431001-837-00	Rear Wheel Axle	1
F10	15	GGt 6187-1986	Nut M14 x 1.5	1

Figure F11-A

Rear Disc Brake (XF200GY-2 and XF150GY-2)

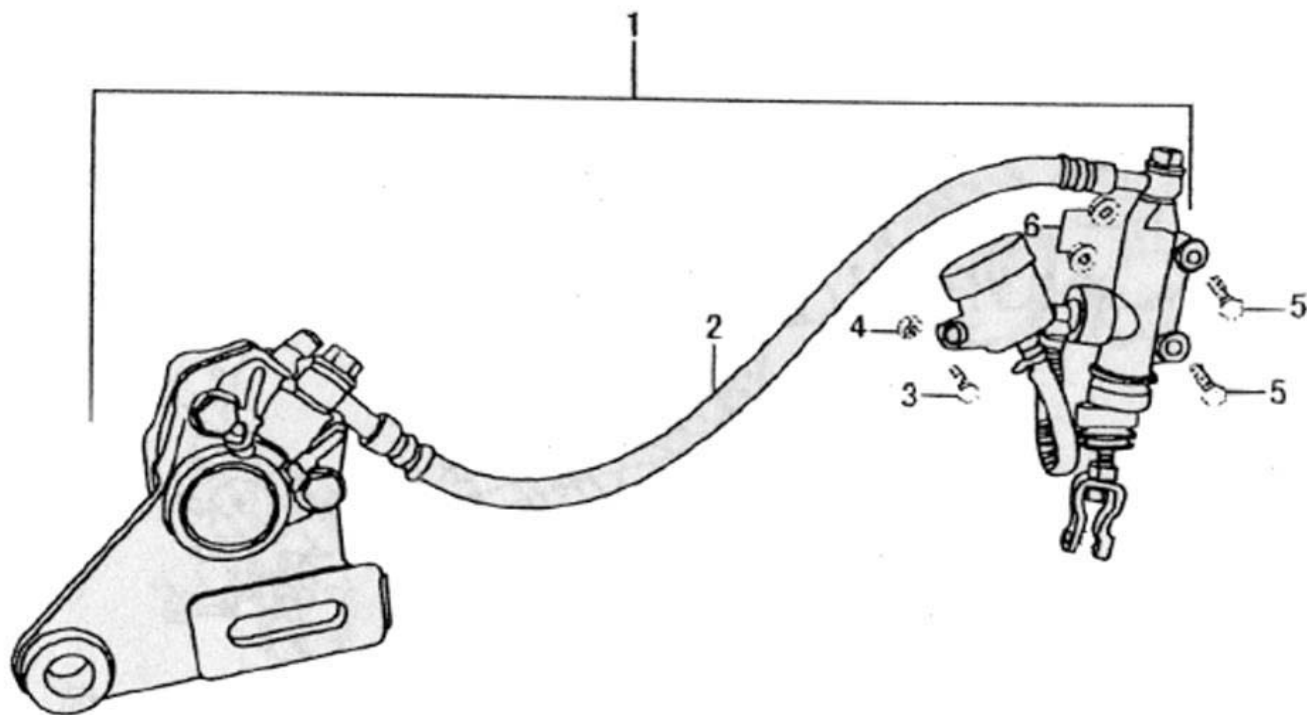


Figure No.	Reference No.	Part No.	Description	Quantity
F11-A	1	6600000-837-00	Rear Disc Brake Assembly	1
F11-A	2	6670000-837-00	Soft Pipe, Rear Brake	1
F11-A	3	GB/T 5783-1986	Bolt M6 x 20	1
F11-A	4	GB/T 6170-1986	Nut M6	1
F11-A	5	GB/T 5783-1986	Bolt M6 x 25	2
F11-A	6	GB/T 6177-1986	Nut M6	2

Figure F11-B

Rear Drum Brake (XF200GY and XF150GY)

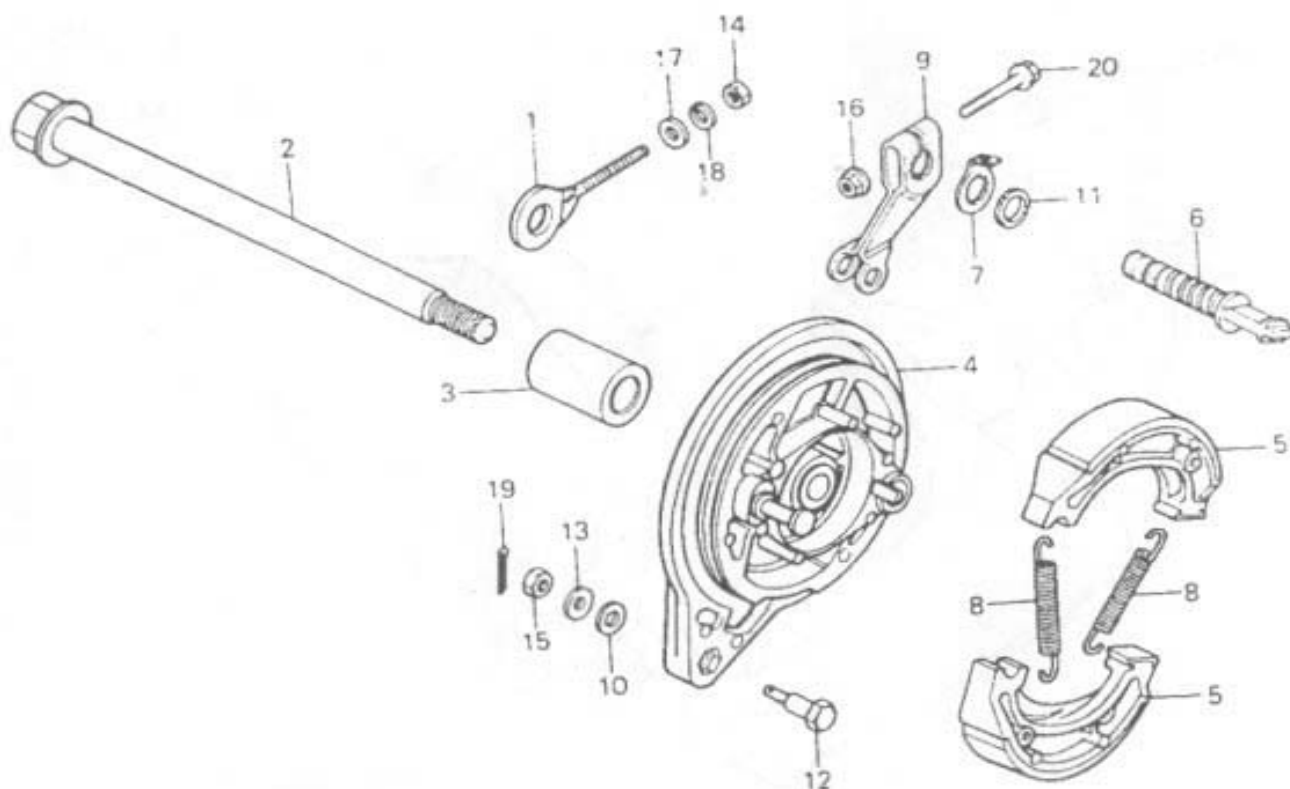


Figure No.	Reference No.	Part No.	Description	Quantity
F11-B	4,5	6511009/6511010	Rear Drum Brake Assembly	
F11-B	1	6141001	Chain Adjuster	1
F11-B	2	6431001	Rear Wheel Axle	1
F11-B	3	6431002	Collar	1
F11-B	4	6511010	Rear Brake Cover	1
F11-B	5	6511009	Rear Brake Shoe Component	2
F11-B	6	6511002	Rear Brake Cam	1
F11-B	7	6511005	Indication Plate	1
F11-B	8	6511001	Spring, Shoe	1
F11-B	9	6511003	Rear Brake Arm	1
F11-B	10	6511008	Cushion, Stop Bolt	1
F11-B	11	6511007	Dust Ring	1
F11-B	12	6511006	Stop Bolt	1
F11-B	13	GB95-85	Washer	1
F11-B	14	GB6175-86	Nut M6	1
F11-B	15	GB6175-86	Nut M8	1
F11-B	16	GB6177-86	Nut M6	1
F11-B	17	GB93-87	Washer 6	1
F11-B	18	GB848-85	Washer 6	1
F11-B	19	GB91-86	Split Pin 2 x 16	1
F11-B	20	GB5787-86	Bolt M6 x 35	1

Figure F12

Fuel Tank

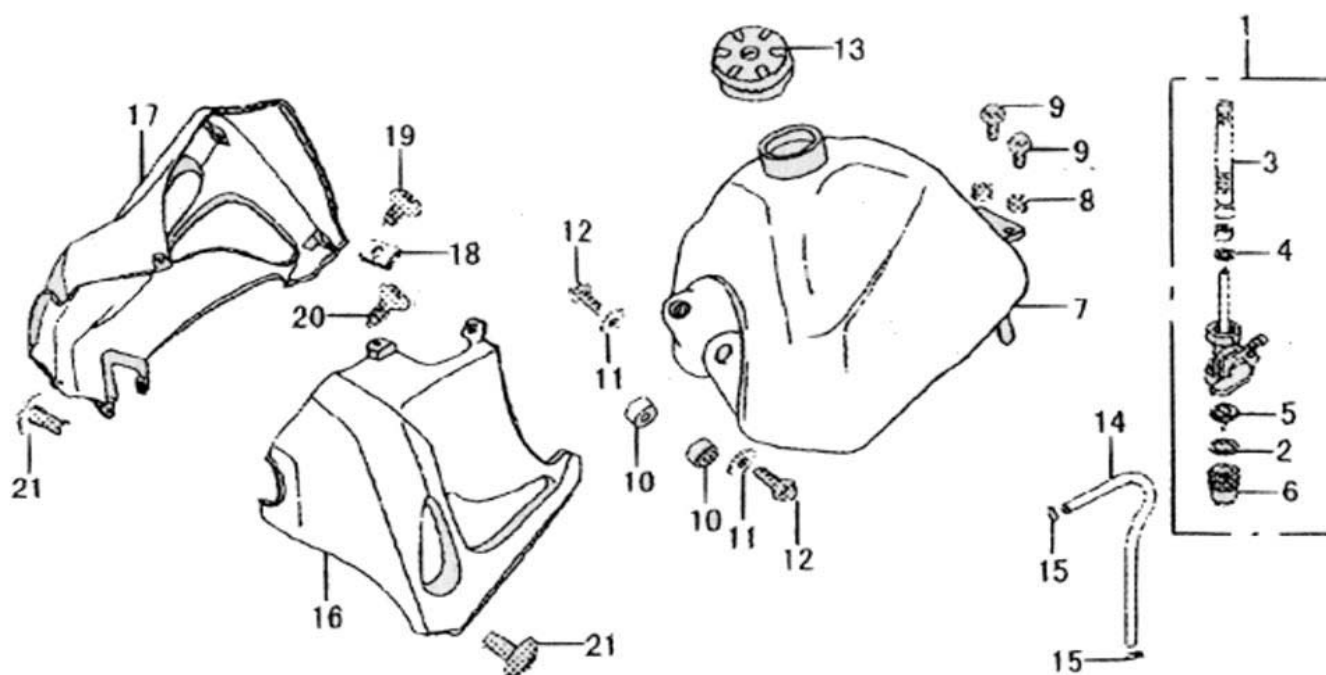


Figure No.	Reference No.	Part No.	Description	Quantity
F12	1	1691000-703-00	Fuel Cock (Pet Cock)	1
F12	2	1691004-703-00	O-ring	1
F12	3	1691002-703-00	Filtering Screen	1
F12	4	1691003-703-00	O-ring	1
F12	5	1691005-703-00	Filtering Cup	1
F12	6	1691006-703-00	Fuel Cup	1
F12	7	1661000-837-00	Fuel Tank	1
F12	8	1681003-837-00	Rear Damping Cushion, Fuel Tank	2
F12	9	GB/T 5787-1986	Bolt M6 x 16	2
F12	10	1681002-837-00	Front Cushion, Fuel Tank	2
F12	11	GB/T 96-1985	Washer 6	2
F12	12	GB/T 5787-1986	Bolt M6 x 20	2
F12	13	4820000-837-00	Fuel Lock (Fuel Cap)	1
F12	14	1693001-738-00	Hose	1
F12	15	1693004-738-00	Hose Clip	2
F12	16	1682004-837-00	Left Hood, Fuel Tank (painted)	1
F12	17	1682003-837-00	Right Hood, Fuel Tank (painted)	1
F12	18	9111006-837-00	Clip ST4.2	1
F12	19	GB/T 845-1985	Screw ST4.2 x 12	1
F12	20	GB/T 845-1985	Screw ST3.5 x 15	1
F12	21	9111011-837-00	Bolt M6 x 20	2

Figure F13

Seat

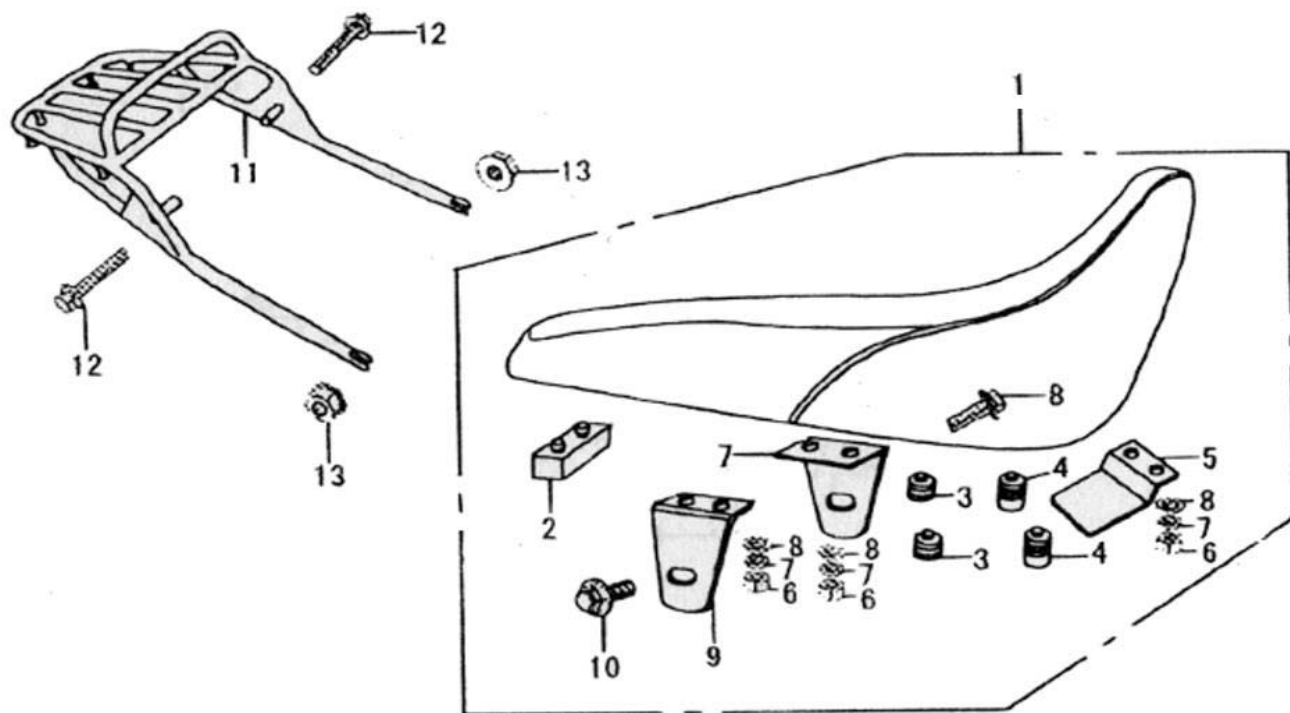


Figure No.	Reference No.	Part No.	Description	Quantity
F13	0		Seat Assembly	
F13	1	4410000-837-10	Seat Cushion	1
F13	2	4421006-837-10	Rear Damping Rubber Washer	1
F13	3	4421004-837-10	Center Damping Rubber Washer	2
F13	4	4421003-837-10	Front Damping Rubber Washer	2
F13	5	4421002-837-10	Front Connecting Board	1
F13	6	GB/T 6170-1986	Nut 6	6
F13	7	GB/T 93-1987	Washer 6	6
F13	8	GB/T 97.1-1985	Washer 6	6
F13	9	4421010-837-10	Right Bracket, Seat Cushion	2
F13	10	GB/T 5787-1986	Bolt M8 x 16	2
F13	11	4541000-837-00	Rear Carrier Weld	1
F13	12	GB/T 5787-1986	Bolt M8 x 75	2
F13	13	GB/T 6177-1986	Nut M10	2

Figure F14

Side Covers

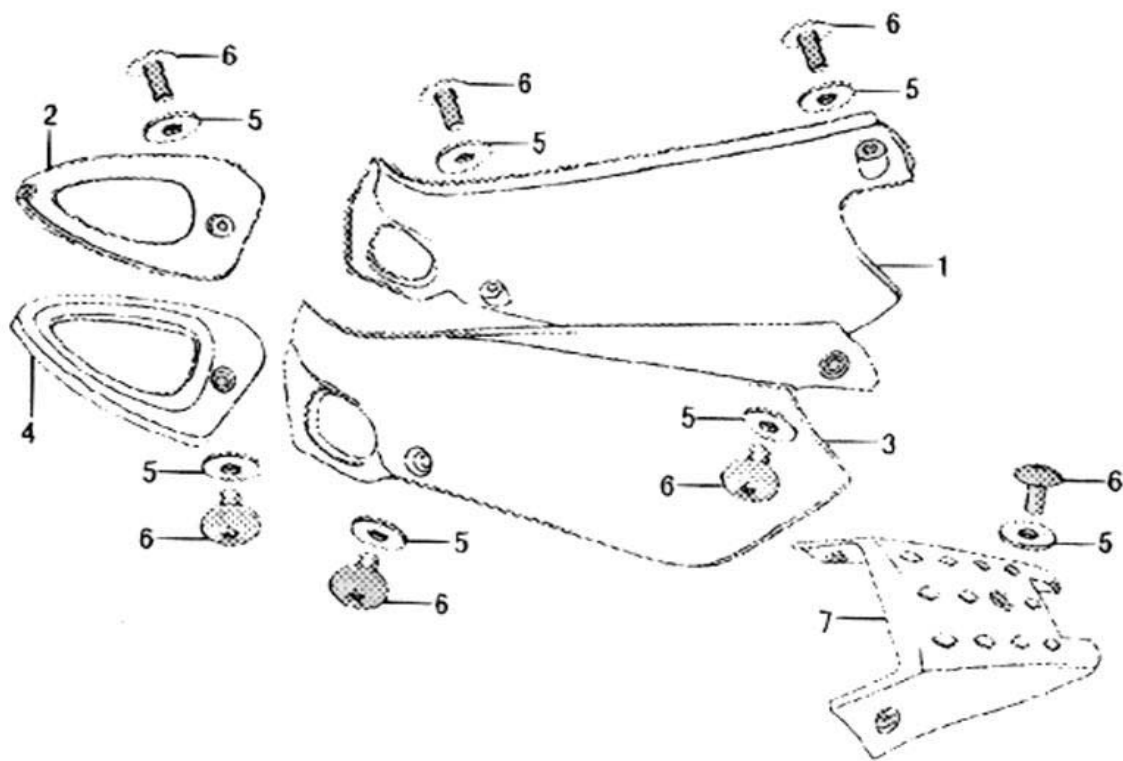


Figure No.	Reference No.	Part No.	Description	Quantity
F14	1	4331027-837-00	Right Side Cover (painted)	1
F14	2	4372003-837-00	Right Decorative Cover (silver)	1
F14	3	4374001-837-00	Left Side Cover (painted)	1
F14	4	4373003-837-00	Left Decorative Cover (silver)	1
F14	5	GB/T 96-1985	Washer 6	7
F14	6	9111011-837-00	Bolt M6 x 20	7
F14	7	4371001-837-00	Tail Cover (painted)	1

Figure F15

Air Cleaner

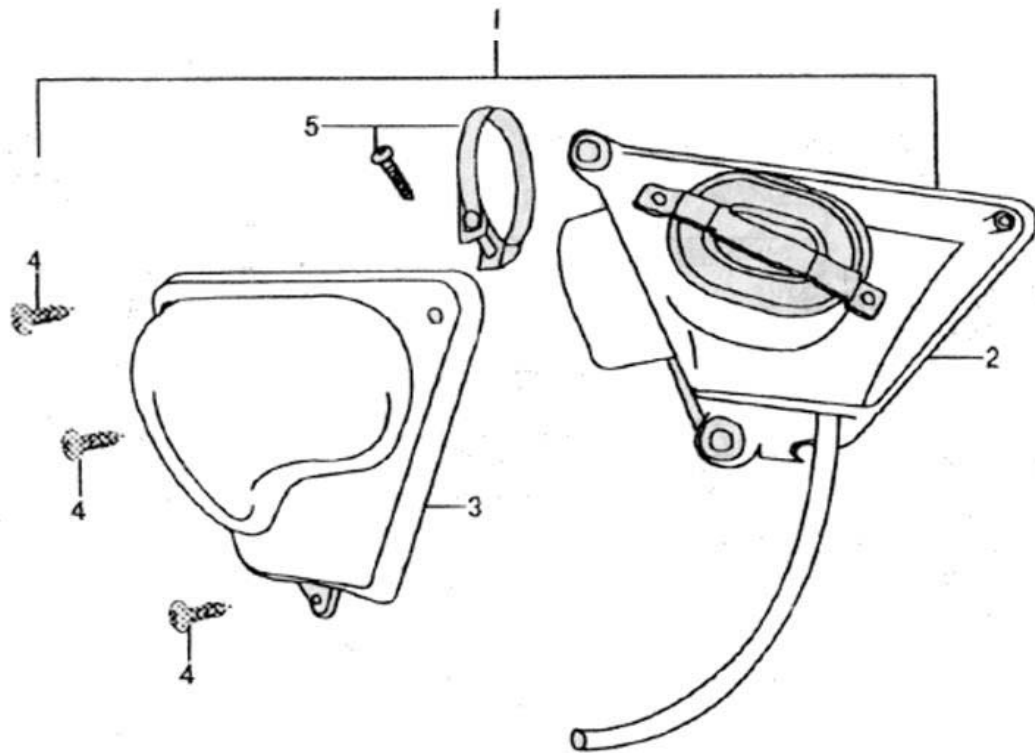


Figure No.	Reference No.	Part No.	Description	Quantity
F15	1	1710000-837-10	Air Cleaner Assembly	1
F15	2	1714000-837-10	Housing, Air Cleaner	1
F15	3	1711000-837-10	Cover, Air Cleaner	1
F15	4	GB/T 845-1985	Screw ST4.8 x 16	3
F15	5	1713000-837-10	Clip, Air Cleaner	1

Figure F16

Muffler

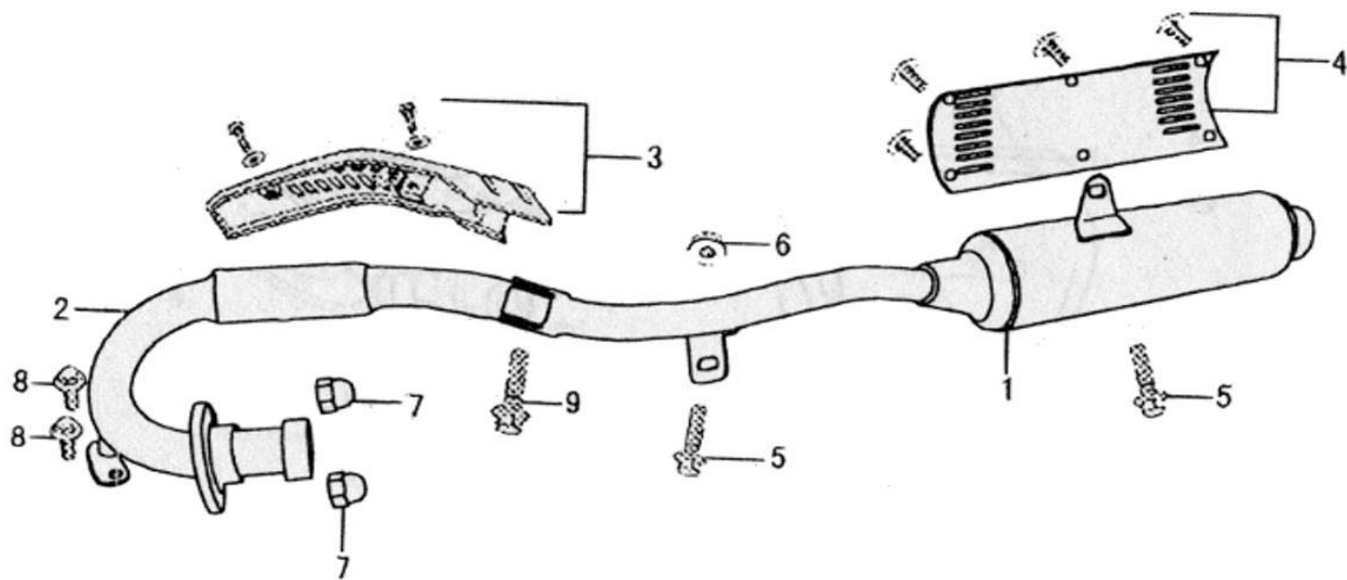


Figure No.	Reference No.	Part No.	Description	Quantity
F16	1-3		Muffler Assembly	
F16	1	18000009837-10	Exhaust Muffler	1
F16	2	1810000-837-10	Exhaust Pipe	1
F16	3	1821004-837-10	Guard Exhaust Pipe	1
F16	4	1861003-837-10	Protective Plate, Muffler	1
F16	5	GB/T 5787-1986	Bolt M8 x 20	2
F16	6	GB/T 6177-1986	Nut M8	1
F16	7	GB/T 923-1985	Nut M6	2
F16	8	GB/T 5787-1986	Bolt M8 x 16	2
F16	9	GB/T 5787-1986	Bolt M8 x 35	1

Figure F17

Footrests

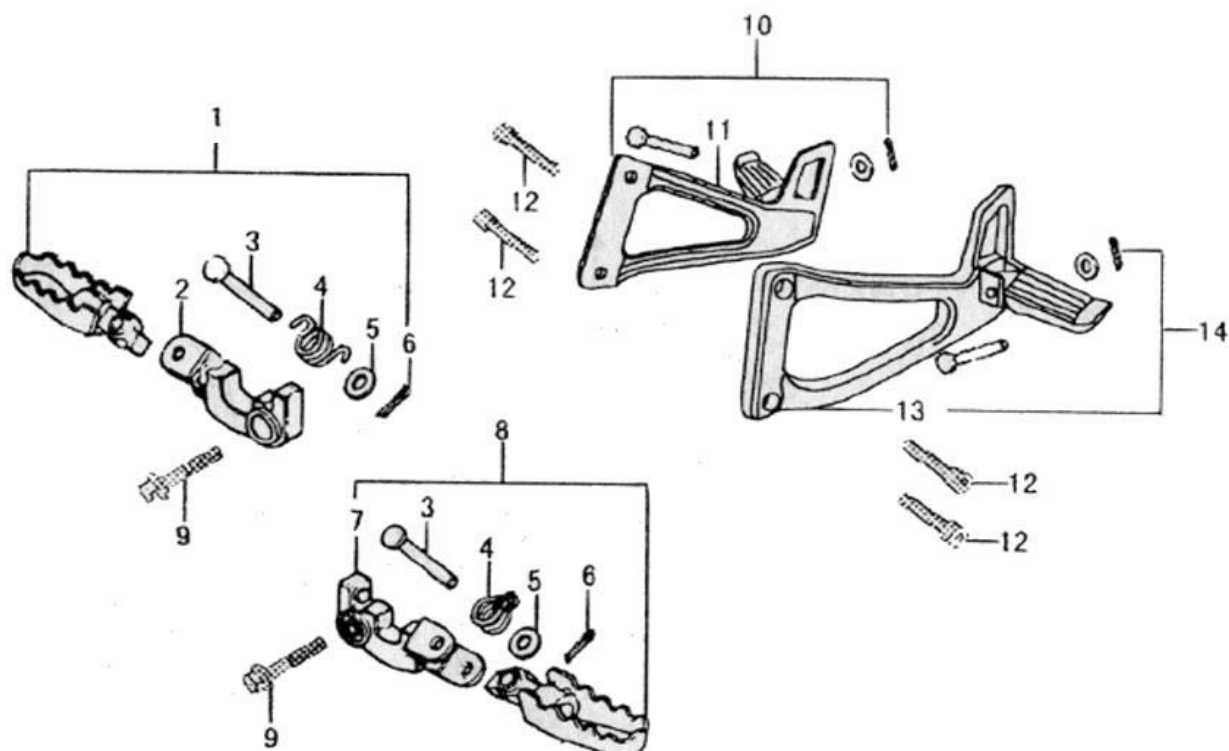


Figure No.	Reference No.	Part No.	Description	Quantity
F17	1	4261000-738-00	Footrest, Front Right	1
F17	2	4261007-738-00	Holder, Front Right Footrest	1
F17	3	GT 882-1986	Pivot 8 x 40	2
F17	4	4261001-738-00	Reset Spring, Front Right Footrest	2
F17	5	GB/T 848-1985	Washer 8	2
F17	6	GB/T 91-1986	Split Pin 3.2 x 14	2
F17	7	4262001-738-00	Holder, Front Left Footrest	1
F17	8	4262000-738-00	Footrest, Front Left	1
F17	9	GB/T 5787-1986	Bolt M8 x 35	2
F17	10	4275000-738-00	Rear Right Footrest	1
F17	11	4275001-837-20	Rear Right Footrest Bracket	1
F17	12	GB/T 70-1986	Bolt M8 x 20	4
F17	13	4272001-837-20	Left Right Footrest	1
F17	14	4272000-837-20	Left Right Footrest Bracket	1

Figure F18

Frame Body

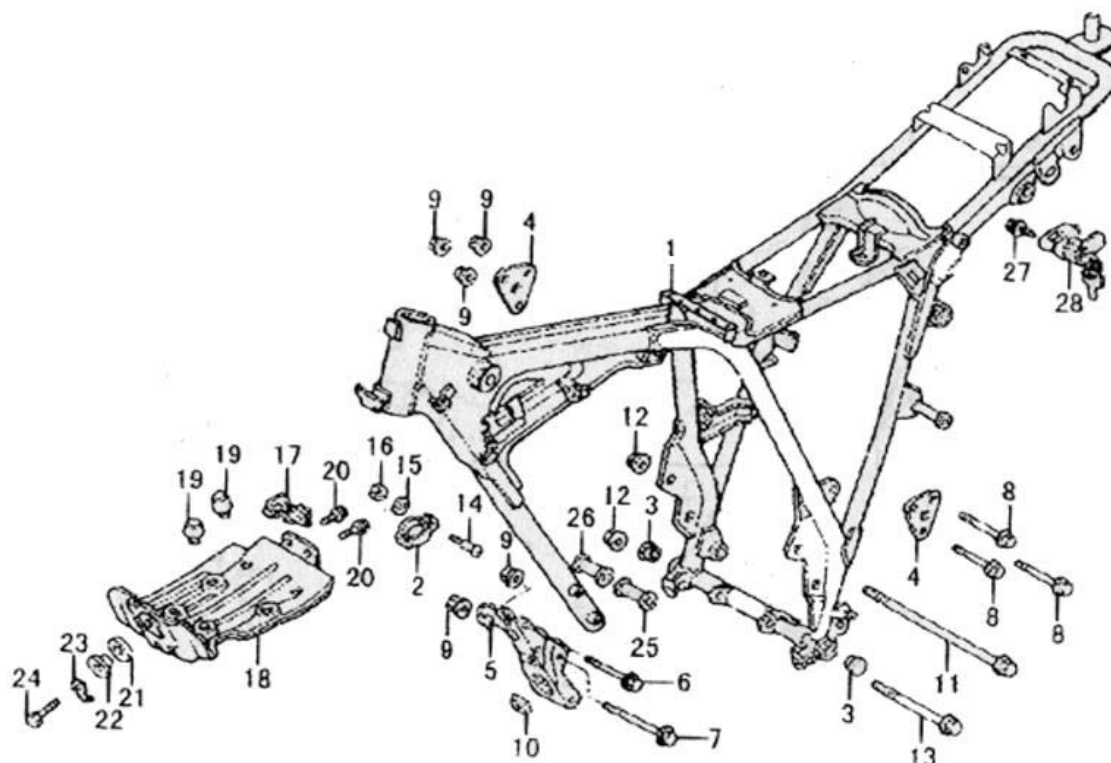


Figure No.	Reference No.	Part No.	Description	Quantity
F18	1	4110000-837-30	Frame Body	1
F18	2	4111012-837-00	Wire Clip	1
F18	3	4123011-837-30	Plug	2
F18	4	4111007-837-30	Upper Motor Mount Plate (Upper Panel)	2
F18	5	4111009-837-30	Front Connecting Board	1
F18	6	GB/T 5787-1986	Bolt M8 x 1.25 x 55	2
F18	7	GB/T 5787-1986	Bolt M8 x 1.25 x 90	2
F18	8	GB/T 5787-1986	Bolt M8 x 1.25 x 60	3
F18	9	GB/T 6177-1986	Nut M8	3
F18	10	4113002-738-00	Rubber Ring	1
F18	11	4112005-738-00	Suspension Shaft	1
F18	12	GB/T 6187-1986	Nut M10	2
F18	13	GB/T 5787-1986	Bolt M10 x 1.25 x 115	1
F18	14	GB/T 818-1985	Screw M5 x 12	1
F18	15	GB/T 97.1-1985	Washer 5	1
F18	16	GB/T 6170-1986	Nut M5	1
F18	17	4123011-837-00	Tube Clip	1
F18	18	4113000-837-10	Lower Guard Engine	1
F18	19	4113001-837-10	Damping Washer	4
F18	20	GB/T 5787-1986	Bolt M6 x 20	2
F18	21	4113002-837-10	Rubber Washer	2
F18	22	9111001-837-00	Bushing	1
F18	23	GB/T 96-1985	Washer 5	1
F18	24	GB/T 5787-1986	Bolt M8 x 35	1
F18	25	4111010-738-00	Bushing A	1
F18	26	4111011-738-00	Bushing B	1
F18	27	GB/T 5787-1986	Bolt M6 x 12	1
F18	28	4860000-837-00	Helmet Lock	1

Figure F19

Wind Board

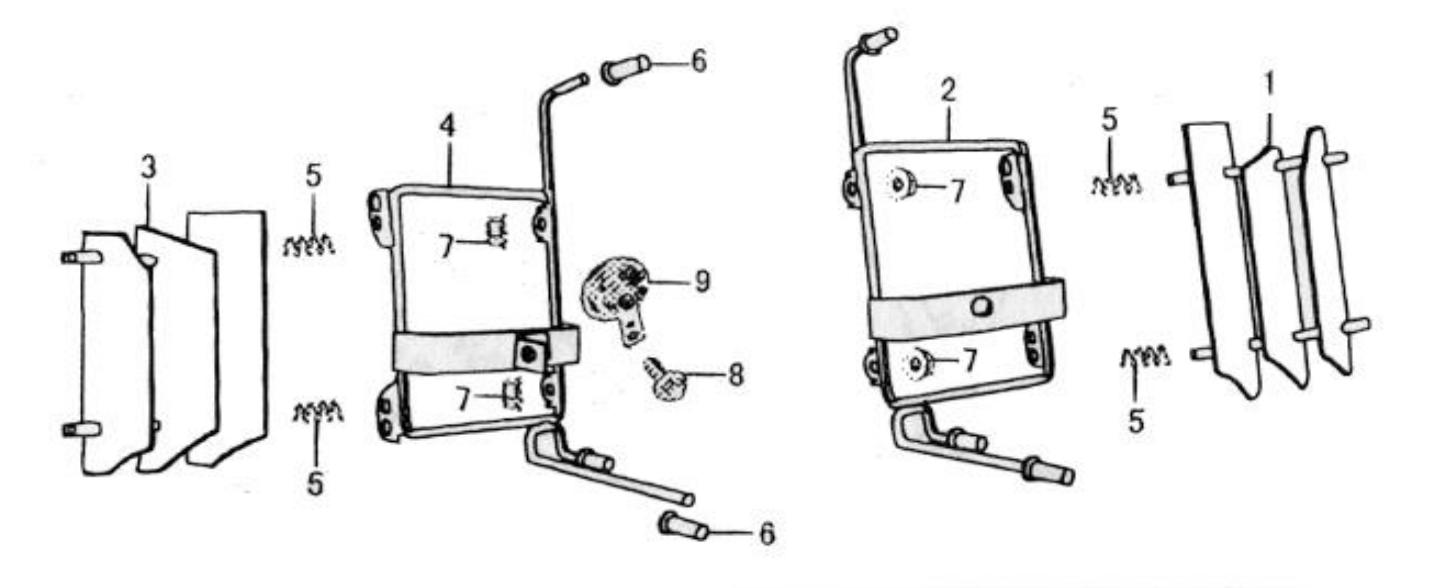


Figure No.	Reference No.	Part No.	Description	Quantity
F19	1	4111024-837-00	Right Wind Board	1
F19	2	4111026-837-00	Bracket, Right Wind Board	1
F19	3	4111025-837-00	Left Wind Board	1
F19	4	4111027-837-00	Bracket, Left Wind Board	1
F19	5	4111029-837-00	Spring, Wind Board	4
F19	6	4111028-837-00	Bracket Glue, Wind Board	6
F19	7	GB/T 6177-1986	Nut M6	4
F19	8	GB/T 5787-1986	Bolt M6 x16	1
F19	9	3810000-738-00	Horn	1

Figure F20

Rear Fork

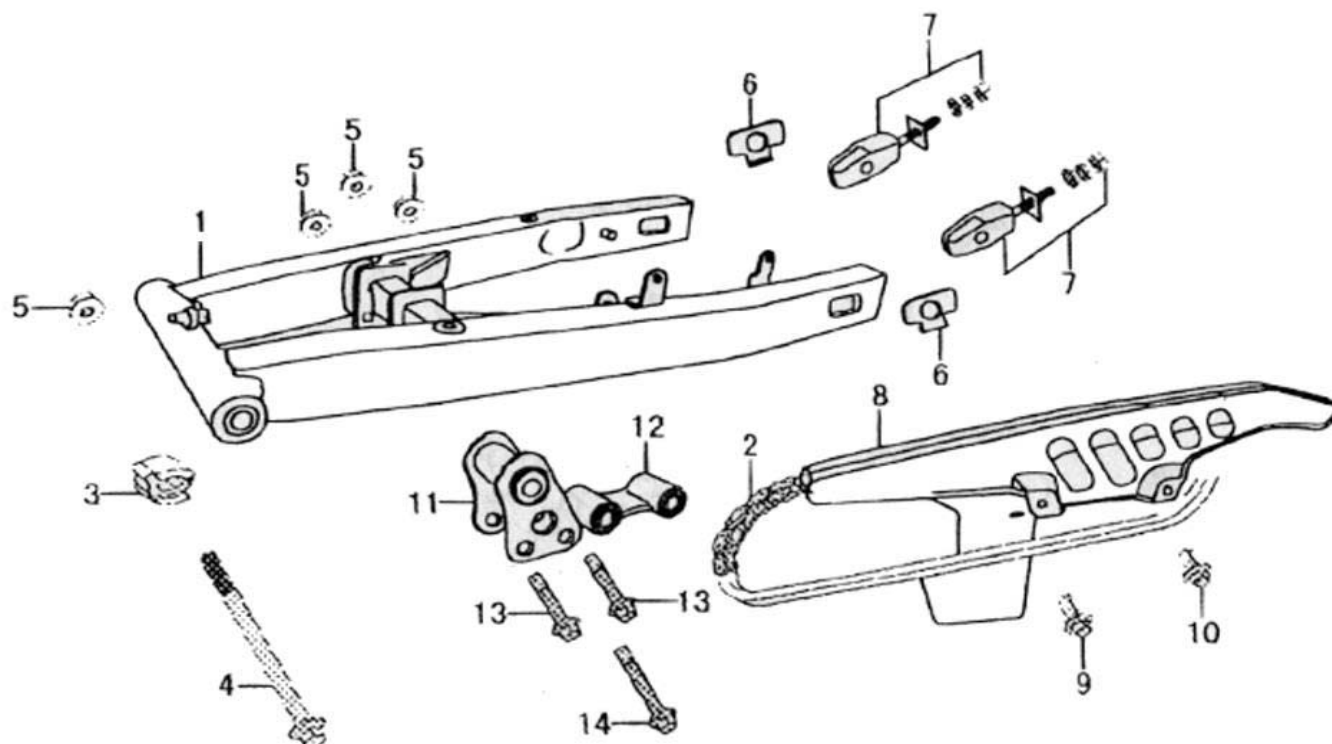


Figure No.	Reference No.	Part No.	Description	Quantity
F20	1	6110000-837-30	Rear Fork	1
F20	2	2970000-837-40	Driving Chain	1
F20	3	6121006-837-00	Chain Guard	1
F20	4	6121004-738-00	Rear Fork Shaft	1
F20	5	GB/T 6187-1986	Nut M12 x 1.25	4
F20	6	6141002-837-30	Gear Block	2
F20	7	6141000-837-30	Chain Adjuster	2
F20	8	6130000-837-10	Chain Case (Chain Guard)	1
F20	9	GB/T 5787-1986	Bolt M6 x 8	1
F20	10	GB/T 5787-1986	Bolt M6 x 12	1
F20	11	6232003-837-10	Cradle, Chain (Bottom Shock Link)	1
F20	12	6232004-837-10	Cradle, Chain (Bottom Shock Link)	1
F20	13	GB/T 5787-1986	Bolt M12 x 75	1
F20	14	GB/T 5787-1986	Bolt M12 x 80	1

Figure F21

Rear Shock Absorber

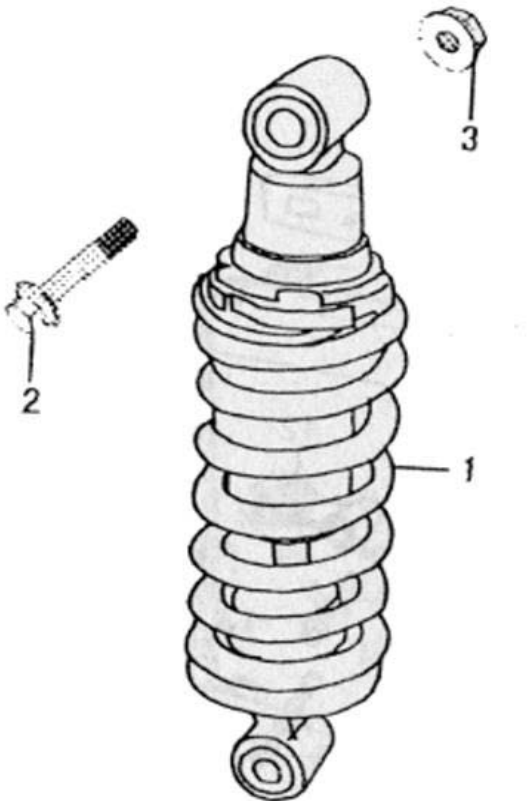


Figure No.	Reference No.	Part No.	Description	Quantity
F21	1	6214000-837-10	Rear Shock Absorber	1
F21	2	GB/T 5787-1986	Bolt M12 x 65	1
F21	3	GB/T 6187-1986	Nut M12 x 1.25	1

Figure F22

Rear Fender

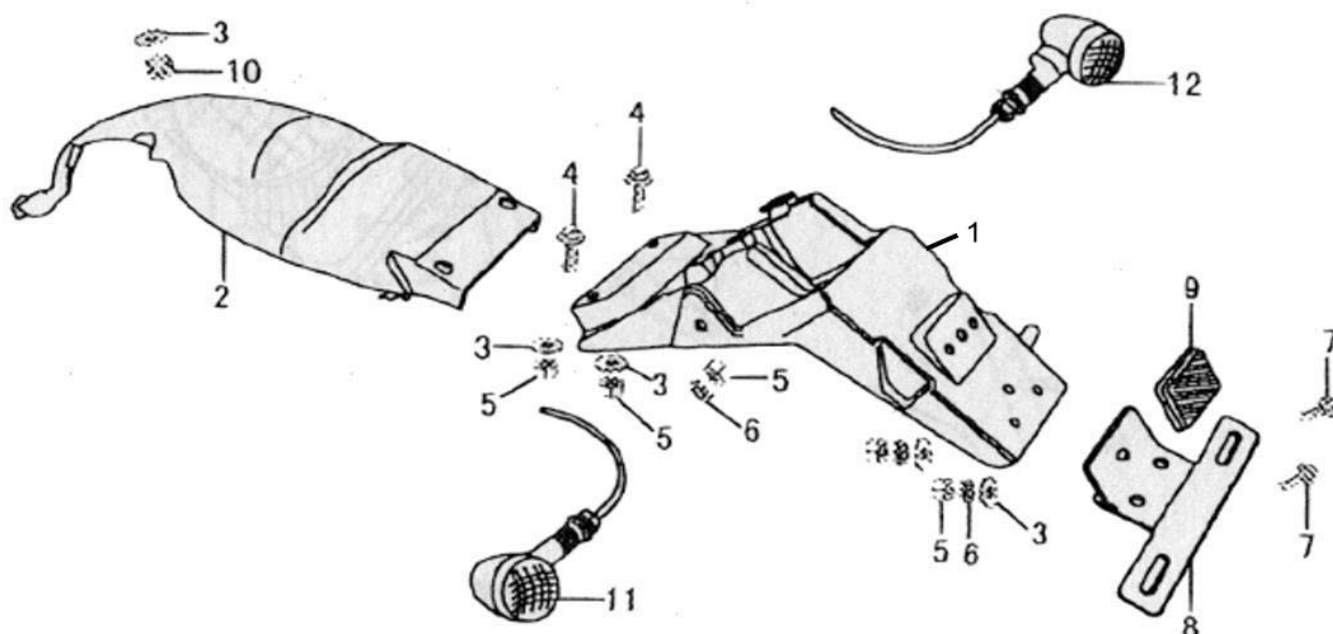


Figure No.	Reference No.	Part No.	Description	Quantity
F22	1	6351002-837-00	Rear Body, Rear Fender	1
F22	2	6311001-837-00	Front Body, Rear Fender	1
F22	3	GB/T 96-1985	Washer 6	6
F22	4	GB/T 5787-1986	Bolt M6 x 16	2
F22	5	GB/T 6170-1986	Nut M6	6
F22	6	GB/T 93-1987	Washer 6	3
F22	7	GB/T 5787-1986	Bolt M6 x 12	2
F22	8	6371001-837-00	Rear License Plate Bracket	1
F22	9	3382000-837-00	Rear Reflector	1
F22	10	6351015-837-00	Rubber Washer Of Front Hood	1
F22	11	3363001-837-00	Rear Turn Light, Right (Blinker)	1
F22	12	3363005-837-00	Rear Turn Light, Left (Blinker)	1

Figure F23

Taillight

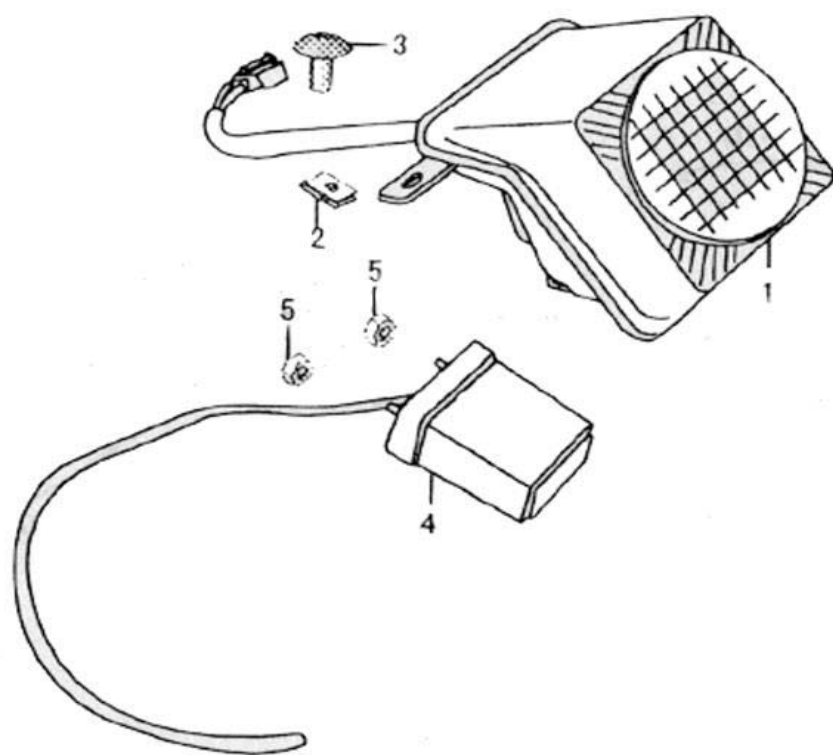


Figure No.	Reference No.	Part No.	Description	Quantity
F23	1	3370000-837-00	Taillight Assembly	1
F23	2	9111005-837-00	Nut M5	2
F23	3	9111011-837-00	Bolt M5 x 16	2
F23	4	3354000-837-00	Rear License Light	1
F23	5	GB/T 6170-1986	Nut M6	2

Figure F24

Brake Arm, Gearshift Pedal, and Kick Pedal

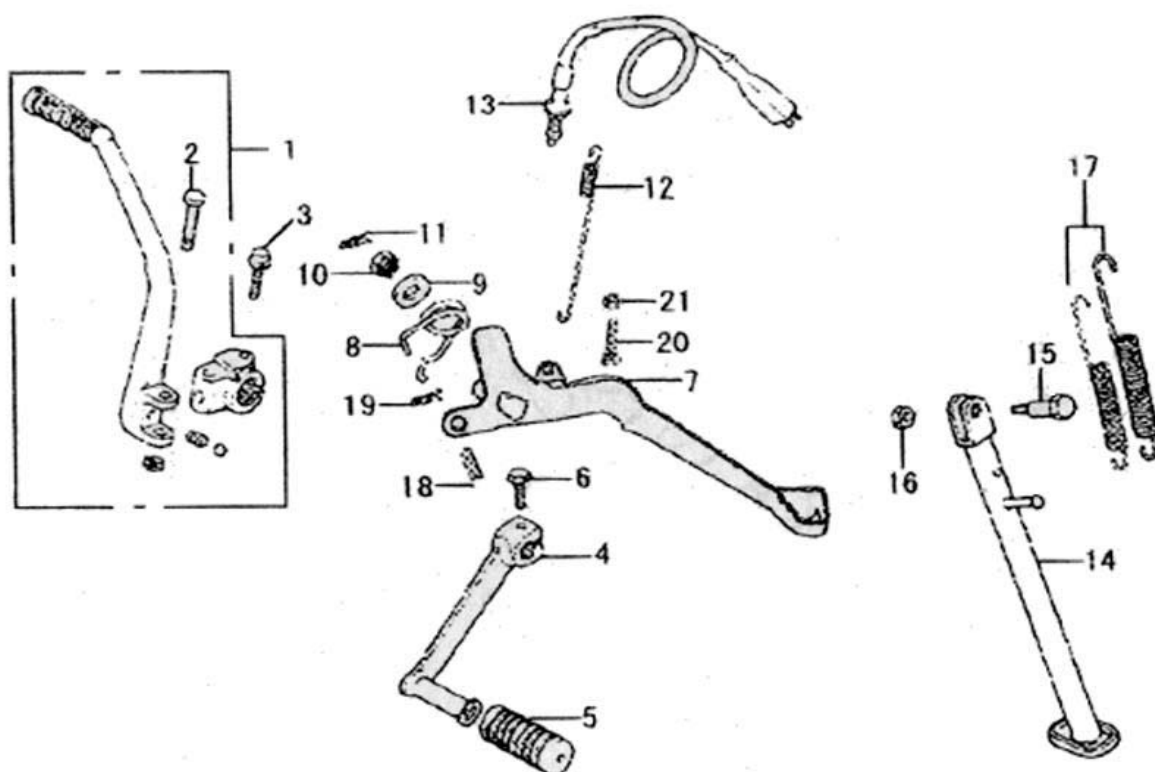


Figure No.	Reference No.	Part No.	Description	Quantity
F24	1	2890000-315D-30	Kick Start Arm Component	1
F24	2	2891002-315D-30	Pivot	1
F24	3	GB/T 5783-1986	Bolt M8 x 25	1
F24	4	2470000-315D-30	Gearshift Pedal	1
F24	5	2471002-315D-30	Boot	1
F24	6	GB/T 5783-1986	Bolt M6 x 20	1
F24	7	6540000-837-00	Rear Brake Pedal	1
F24	8	6541004-837-00	Reset Spring	1
F24	9	GB/T 97.1-1985	Washer 10	1
F24	10	GB/T 6177-1986	Self Locking Nut M10 x 1.25	1
F24	11	GB/T 91-1986	Split Pin 2 x 16	1
F24	12	6541008-837-00	Spring	1
F24	13	321000-837-00	Rear Stop Light Switch	1
F24	14	4230000-837-00	Side Stand (Prop Stand)	1
F24	15	4231002-837-00	Bolt Side Stand	1
F24	16	GB/T 6175-1986	Nut M10	1
F24	17	4231001-837-00	Side Stand Spring	2
F24	18	GB/T 822-1986	Pin	1
F24	19	GB/T 91-1986	Split Pin 2 x 20	1
F24	20	GB/T 5783-1986	Bolt M6 x 30	1
F24	21	GB/T 6170-1986	Nut M6	1

Figure F25

Wiring Harness and Electrical Units

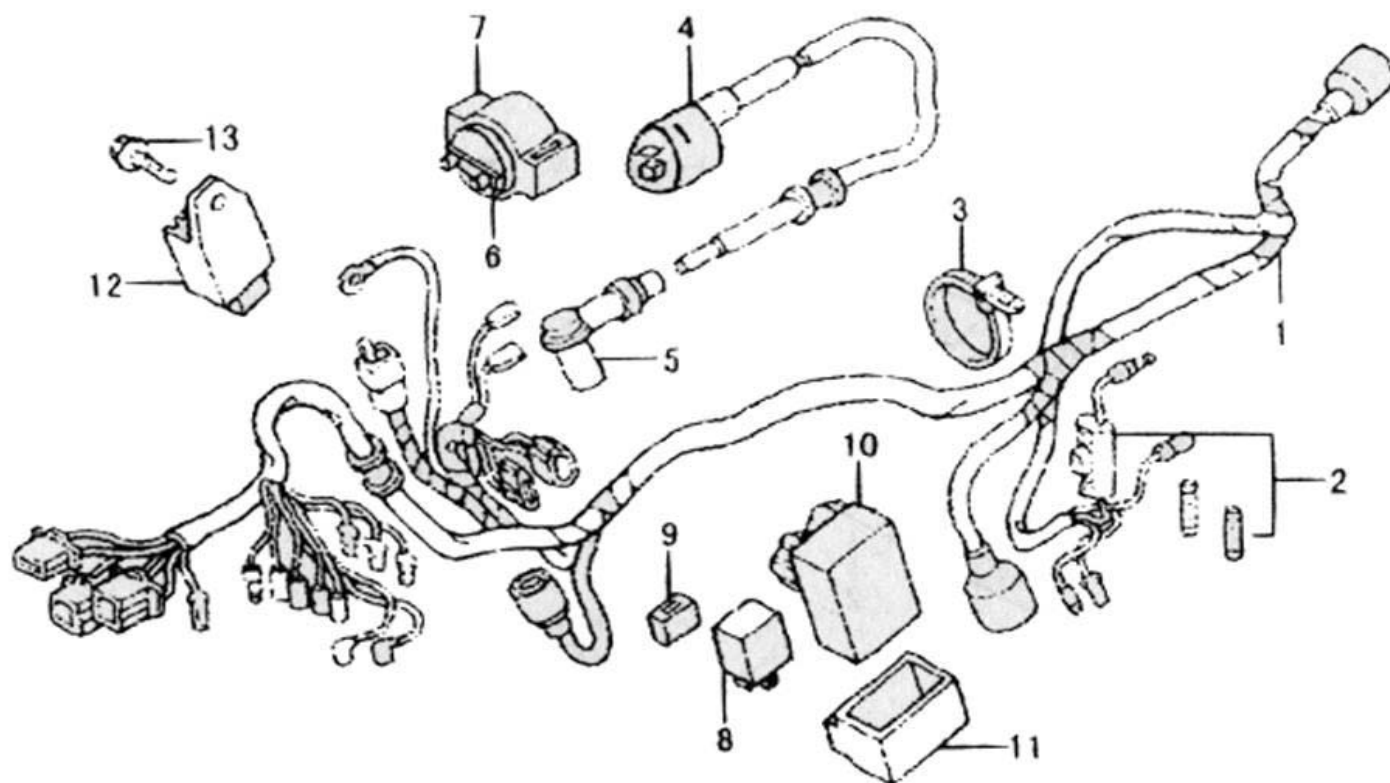


Figure No.	Reference No.	Part No.	Description	Quantity
F25	1	3210000-837-00	Wiring Harness (Wire Harness)	1
F25	2	3171000-837-00	Fuse	1
F25	3	3211007-837-00	Plastic Band	1
F25	4	3450000-703-00	Ignition Coil	1
F25	5	3451000-703-00	Cap, Spark Plug	1
F25	6	3460000-501-10	Switch Assembly, Starter Magnetic	1
F25	7	3461001-501-10	Rub. Boot, Relay	1
F25	8	3821000-501-10	Flash Relay (Flasher Assembly)	1
F25	9	3821001-501-10	Boot, Flash Relay	1
F25	10	3440000-703-00	CDI Unit (Ignition Controller)	1
F25	11	3441001-703-00	Boot Ignition Controller	1
F25	12	3160000-501-00	Voltage Regulator	1
F25	13	GB/T 5787-1986	Bolt M6 x 16	1

Figure F26

Battery

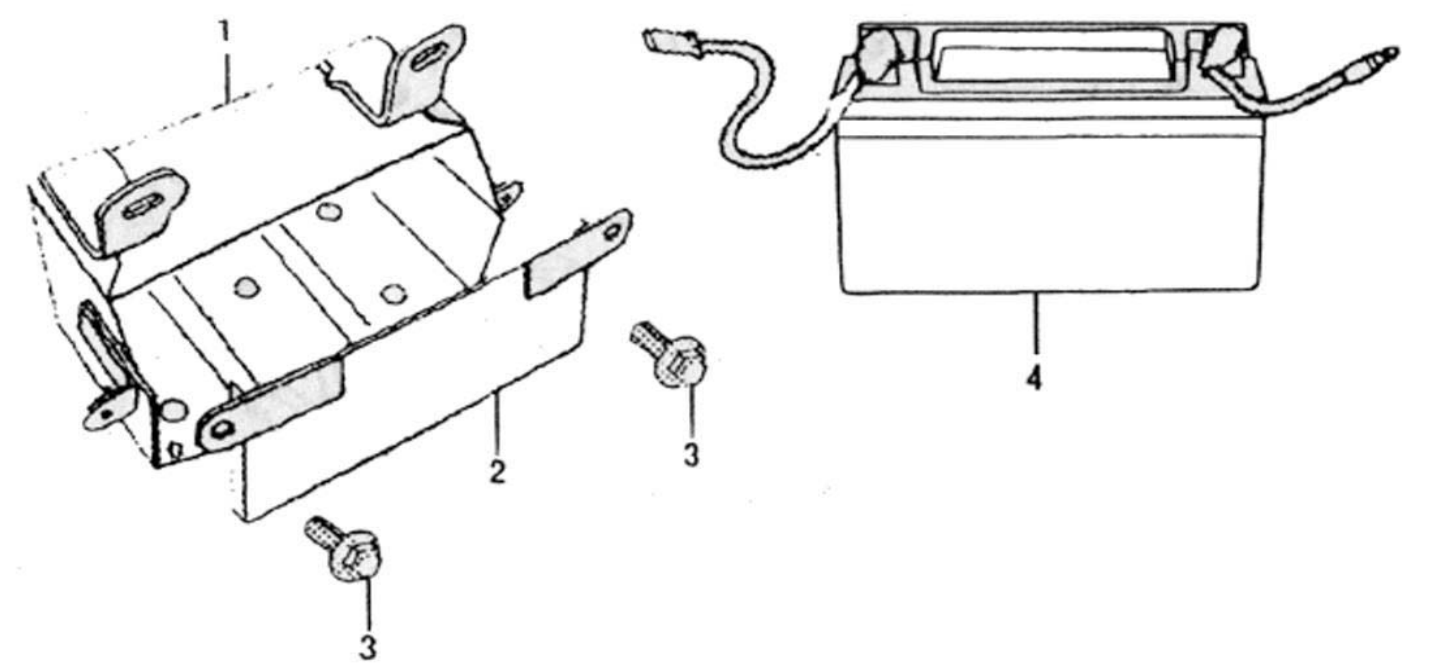


Figure No.	Reference No.	Part No.	Description	Quantity
F26	1	3151008-837-00	Battery Case	1
F26	2	3151009-837-00	Cover, Battery Case	1
F26	3	GB/T 5787-1986	Bolt M8 x 20	2
F26	4	3151000-837-00	Battery	1