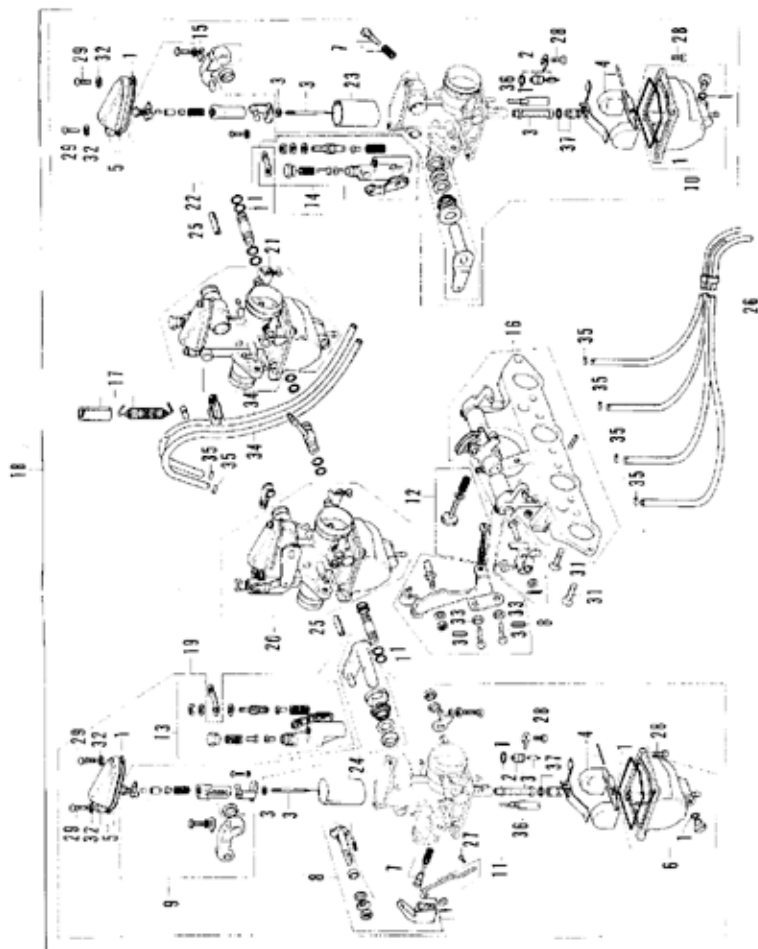


E-18 Crankcase

Ref. No.	Part No.	Description	Reqd. No. CB350F	Serial No.	Export Area
1	11000-333-305	CRANKCASE SET	1		
2	11208-333-000	CAP, OIL PATH	1		
3	11291-333-000	PLUG, OIL PATH	1		
4	15331-300-000	CAP, OIL PATH	1	1069189	
	15332-300-000	CAP B, OIL PATH	1	1069189	
5	32111-333-000	CLAMPER A, CORD	1		
6	32112-333-000	CLAMPER B, CORD	1		
7	50017-333-000	BOLT, FLANGE, 8X60	5		
8	50031-333-000	STUD A, CYLINDER, 8X154	10		
9	50032-333-000	STUD B, CYLINDER, 8X122	2		
10	90082-333-000	BOLT, U.B.S., 8X115 90045-329-000	4	1055175	
	90045-329-000	BOLT, U.B.S., 8X114	4	1055176	
11	90086-333-000	BOLT, U.B.S., 8X97	6		
12	91314-220-000	O-RING, 16.4X2.4	1		
13	91319-300-000	O-RING, 13X2.6	1		
14	94301-C6100	PIN A, DOWEL, 8X10	2		
15	94301-C6140	PIN A, DOWEL, 8X14	6		
16	94301-1C140	PIN A, DOWEL, 10X14	2		
17	94600-40000	O-RING, 19.4X2.8	1		
18	95700-06040	BOLT, FLANGE, 6X40	5		
19	95700-06060	BOLT, FLANGE, 6X60	3		
20	95700-06090	BOLT, FLANGE, 6X90	3		
21	95700-C6100	BOLT, FLANGE, 6X100	1		



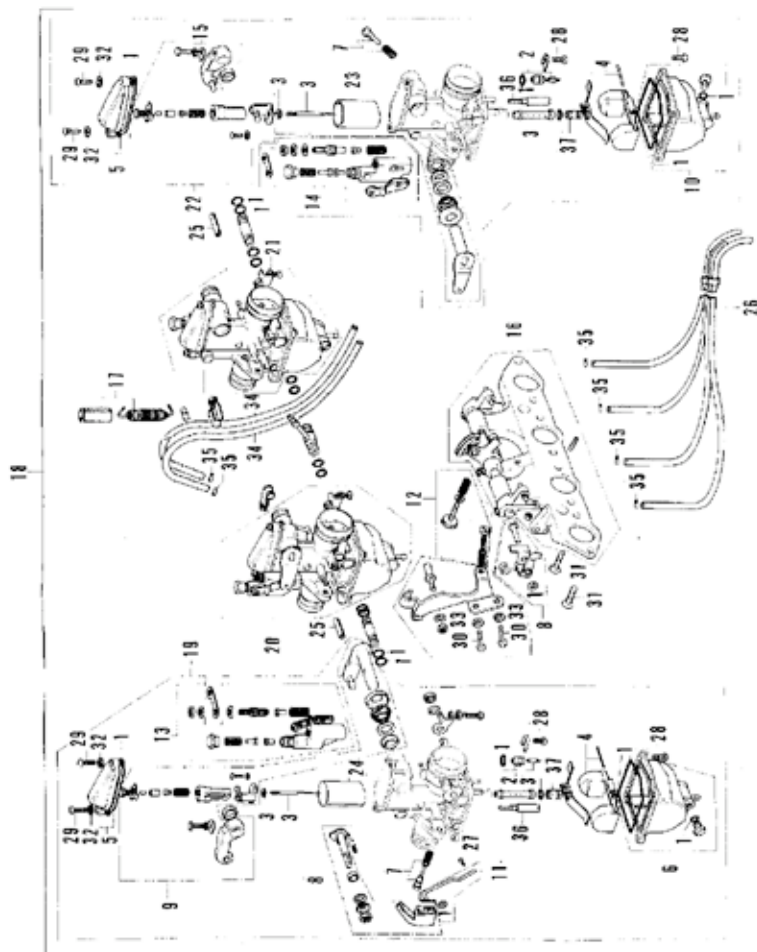
E-19 Carburetor (KEIHIN)



E-19 Carburetor (KEIHIN)

Ref. No.	Part No.	Description	Reqd. No. CB350F	Serial No.	Export Area
1	16010-333-004	GASKET SET	4		
2	16011-329-004	VALVE SET; FLOAT	4		
3	16012-333-004	NEEDLE SET; JET	4		
4	16013-333-004	FLOAT SET	4		
5	16014-333-004	TOP SET	4		
6	16015-333-004	CHAMBER SET A; FLOAT	2		
7	16016-333-004	SCREW SET A	4		
8	16017-333-004	LINK SET	1		
9	16018-333-004	ARM SET; LINK	2		
10	16023-333-004	CHAMBER SET B; FLOAT	2		
11	16025-333-004	ROD SET; CHOKE	1		
12	16028-333-004	SCREW SET B	1		
13	16029-323-004	HOLDER SET A; ADJUST	2		
14	16030-323-004	HOLDER SET B; ADJUST	2		
15	16031-333-004	ARM SET B; LINK	2		
16	16035-333-004	PLATE SET; STAY	1		
17	16036-323-004	TUBE SET; PROTECT	1		
18	16100-333-004	CARBURETOR ASSY. (KEIHIN)	1		
19	16101-333-004	CARBURETOR ASSY. A	1		
20	16102-333-004	CARBURETOR ASSY. B	1		
21	16103-333-004	CARBURETOR ASSY. C	1		
22	16104-333-004	CARBURETOR ASSY. D	1		
23	16111-333-004	VALVE A; THROTTLE	2		
24	16112-333-004	VALVE B; THROTTLE	2		
25	16199-333-004	TUBE; FUEL; 2.5X16	2		
26	16290-333-000	TUBE; OVER FLOW	1		
27	93500-03006-08	SCREW; PAN; 3X6	1		
28	93500-04010-08	SCREW; PAN; 4X10	20		
29	93500-05016-08	SCREW; PAN; 5X16	8		
30	93500-06016	SCREW; PAN; 6X16	2		
31	93600-06016	SCREW; FLAT; 6X16	8		

E-19 Carburetor (KEIHIN)

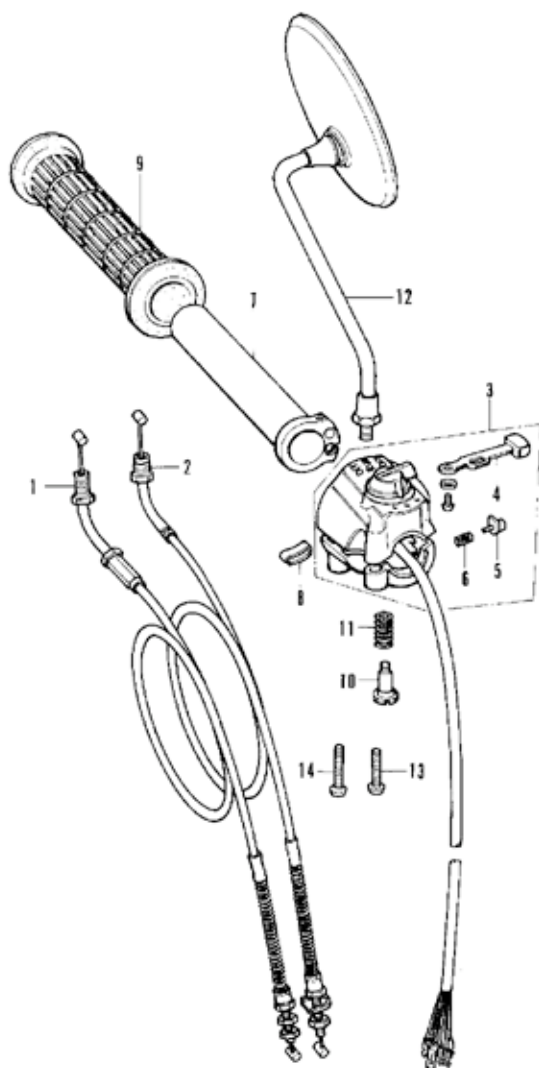


E-19 Carburetor (KEIHIN)

Ref. No.	Part No.	Description	Reqd. No. CH350F	Serial No.	Export Area
32	94111-05000	WASHER, SPRING, 5PM	8		
33	94111-06000	WASHER, SPRING, 6PM	7		
34	95001-35600-40	TUBE, FUEL, 3.5X600	2		
35	95002-02070	CLIP, TUBE, B7	6		
36	99124-076-0350	JET, SLOW (#35) (STN.)	4		
	99124-076-0380	JET, SLOW (#38) (OPTIONAL PART)	4		
37	99202-601-0680	JET SET, MAIN (#68) (OPTIONAL PART)	4		
	99202-601-0700	JET SET, MAIN (#70) (OPTIONAL PART)	4		
	99202-601-0720	JET SET, MAIN (#72) (OPTIONAL PART)	4		
	99202-601-0750	JET SET, MAIN (#75) (STN.)	4		
	99202-601-0780	JET SET, MAIN (#78) (OPTIONAL PART)	4		
	99202-601-0800	JET SET, MAIN (#80) (OPTIONAL PART)	4		



F-1 Right Handle Switch - Cable



F-1 Right Handle Switch - Cable

Ref. No.	Part No.	Description	Reqd. No. CB350F	Serial No.	Export Area
1	17910-333-000	CABLE COMP. A; THROTTLE	1		A;D;E;G;IT
	17910-333-610	CABLE COMP. A; THROTTLE	1		F;G
2	17920-333-000	CABLE COMP. B; THROTTLE	1		A;D;E;G;IT
	17920-333-610	CABLE COMP. B; THROTTLE	1		F;G
3	35300-333-610	SWITCH ASSY.; LIGHTING DIMMER KILL	1		E;D;F;G;IT
	35300-333-671	SWITCH ASSY.; LIGHTING DIMMER KILL	1		A;D
4	35315-235-000	KNOB; LIGHTING SWITCH	1		
5	35317-001-310	BUTTON; HORN SWITCH PUSH	1		
6	35318-259-000	SPRING; HORN BUTTON SWITCH	1		
7	53141-300-010	PIPE; THROTTLE GRIP	1		
8	53163-300-020	ADJUSTER; THROTTLE GRIP	1		
9	53165-342-670	RUBBER; GRIP RIGHT	1		
10	53190-300-000	BOLT; THROTTLE GRIP ADJUSTING	1		
11	53191-300-000	SPRING; THROTTLE ADJUSTER	1		
12	08100-333-004	MIRROR; RIGHT REAR VIEW	1		A;D
	08100-333-610	MIRROR; RIGHT REAR VIEW	1		E;D;G;IT
	08110-304-621	MIRROR; RIGHT REAR VIEW	1		F
13	93500-05025-0A	SCREW; PAN. 5X25	1		
14	93500-05032-0A	SCREW; PAN. 5X32	1		

FRAME GROUP

Courtesy of

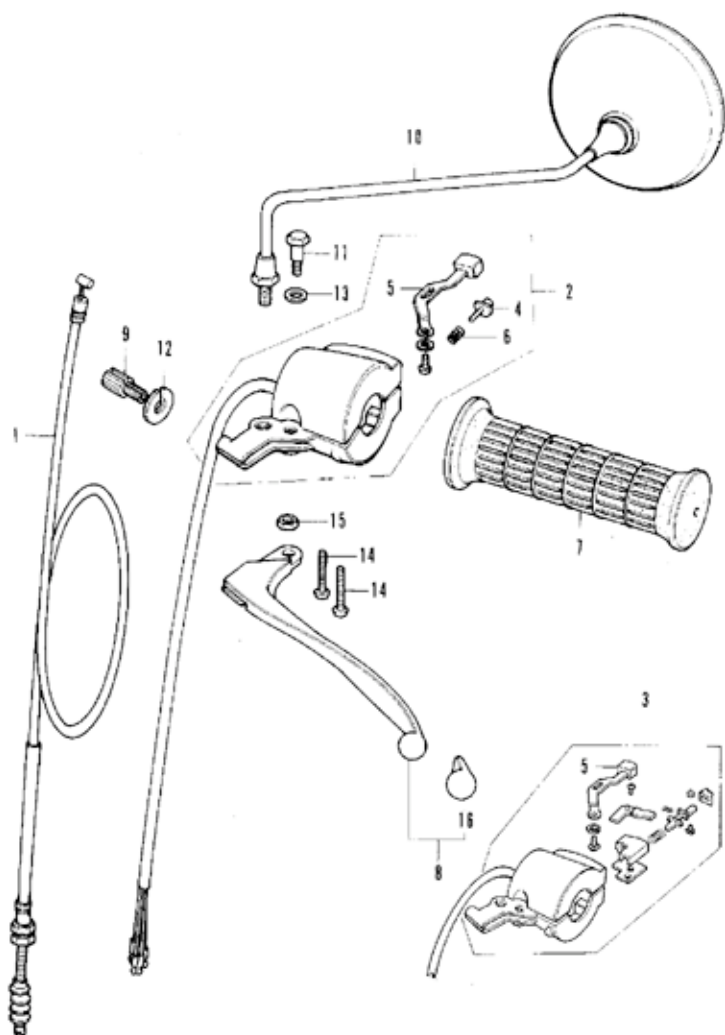
www.hondafour.com



Honda4Fun

www.honda4fun.com

F-2 Left Handle Switch · Cable

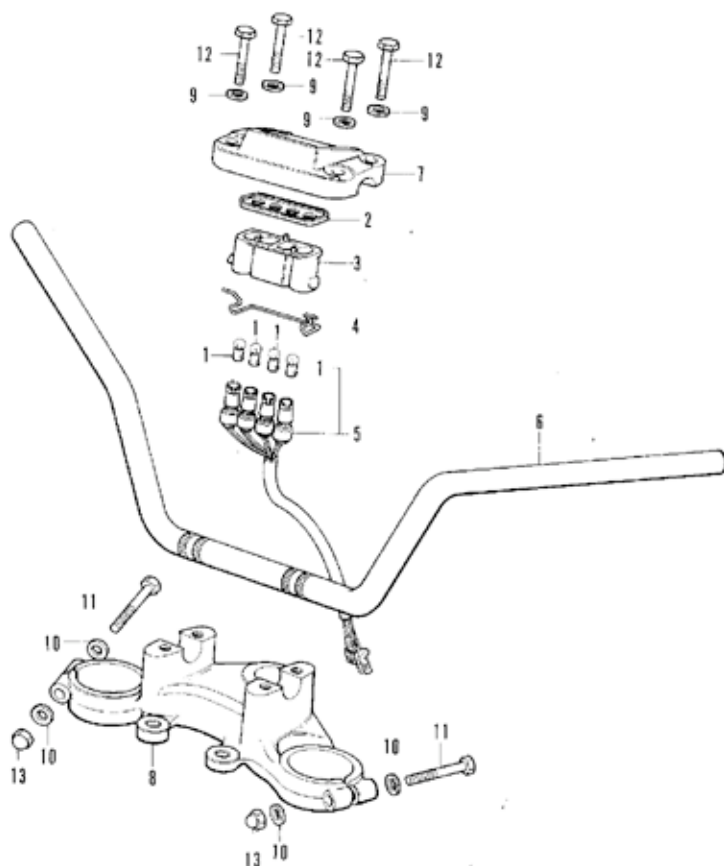


F-2 Left Handle Switch - Cable

Ref. No.	Part No.	Description	Reqd. No. CB350F	Serial No.	Export Area
1	22870-333-000	CABLE COMP., CLUTCH	1		A+D+FD+IT
	22870-333-610	CABLE COMP., CLUTCH	1		F+G
2	35250-300-033	SWITCH ASSY., TURN SIGNAL HORN (TOYO)	1	1070875	A
	35250-319-003	SWITCH ASSY., TURN SIGNAL HORN (TOYO)	1	1070875	4
3	35250-323-013	SWITCH ASSY., TURN SIGNAL HORN PASSING	1	1070875	D+ED+F+G+IT
	35250-333-003	SWITCH ASSY., TURN SIGNAL HORN PASSING (TOYO)	1	1070875	D+ED+F+G+IT
4	35317-001-310	BUTTON, HORN SWITCH PUSH	1		A
5	35317-310-810	KNOB, TURN SIGNAL SWITCH	1		
6	35318-259-000	SPRING, HORN BUTTON SWITCH	1		A
7	53166-342-670	RUBBER, GRIP LEFT	1		
8	53190-286-670	CLVER COMP., LEFT STEERING HANDLE	1	1070754	
	53190-369-700	LEVER COMP., LEFT STEERING HANDLE	1	1070755	
9	53192-268-000	BOLT, CLUTCH WIRE ADJUSTING	1		
10	68120-304-621	MIRROR, LEFT REAR VIEW	1		F
	68120-333-004	MIRROR, LEFT REAR VIEW	1		A+D
	68120-333-610	MIRROR, LEFT REAR VIEW	1		FD+G+IT
11	50114-310-000	BOLT, HANDLE LEVER PIVOT	1		
12	90321-315-670	NUT, FIXING	1		
13	50501-310-000	WASHER, 7X12	1		
14	53500-05025-04	SCREW, PAN. 5X25	2		
15	54001-06000	NUT, HEX., 6XX	1		
16	95010-16000	CAP A, CONTROL LEVER	1	1070754	



F-3 Handle • Top Bridge

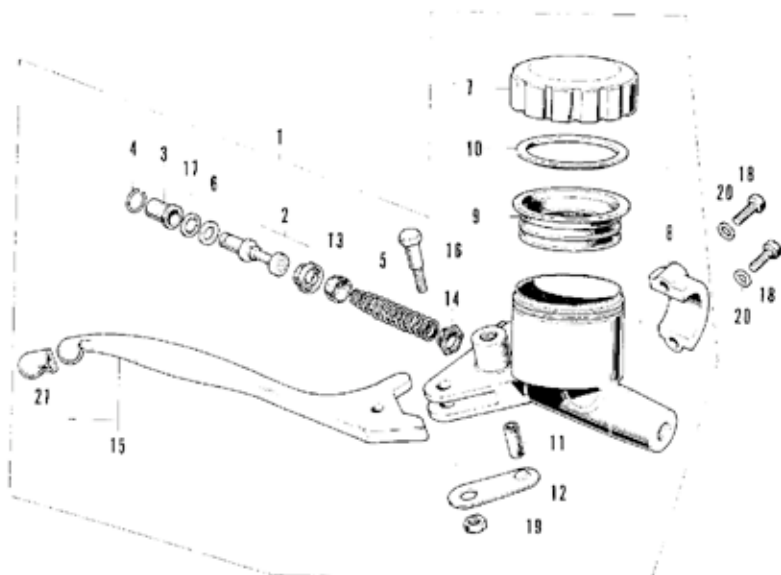


F-3 Handle - Top Bridge

Ref. No.	Part No.	Description	Req. No. CDJ50F	Serial No.	Export Area
1	34902-259-000	BULB, DASH (12V 3W)	4		
2	37576-323-000	BASE, LAMP SOCKET	1		
3	37577-333-000	SOCKET, PILOT LAMP	1		
4	37579-323-000	SPRING, LAMP SOCKET SET	1		
5	37581-333-000	COCK COMP., PILOT LAMP	1		
6	53100-333-000	PIPE, STEERING HANDLE	1		A, D, F, G, H
	53100-333-611	PIPE, STEERING HANDLE	1		F, G
7	53133-323-010	HOLDER, UPPER	1		
8	53231-333-000	BRIDGE, FORK TOP	1		
9	50518-921-000	WASHER, PLAIN, RHP	4	1065888	
10	50555-283-000	WASHER, SPECIAL, RHP	4	1055093	A, D, F, G, H
	54102-08200	WASHER, PLAIN, RHP	4	1055094	A, D, E, F, G, H
			4		
11	92000-08056-08	BOLT, HEX., BX56	2		
12	93000-08036-08	BOLT, HEX., BX36	4	1065888	
	90111-362-000	BOLT, FLANGE, BX36	4	1065889	
13	94021-08020-05	NUT, CAP, RHP	2		



F-4 Brake Master Cylinder

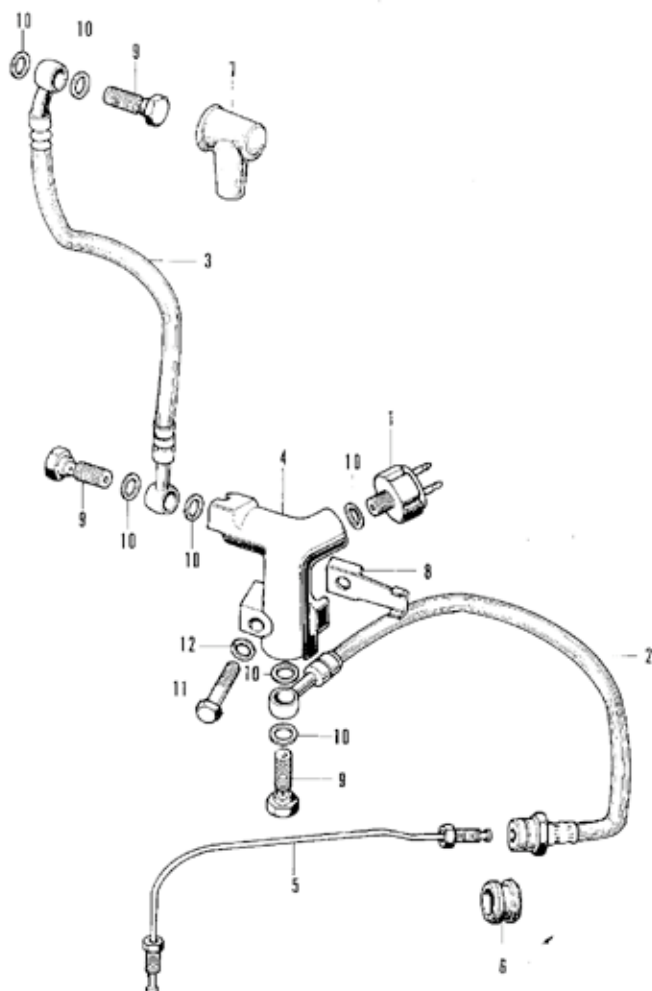


F-4 Brake Master Cylinder

Ref. No.	Part No.	Description	Reqd. No. CH350P	Serial No.	Export Area
1	45500-333-670	CYLINDER ASSY., MASTER 45500-369-670	1	1070754	A
	45500-346-620	CYLINDER ASSY., MASTER	1	1070754	EO, F, IT
	45500-346-680	CYLINDER ASSY., MASTER	1	1070754	D, G
	45500-369-670	CYLINDER ASSY., MASTER	1	1070755	A
	45500-346-621	CYLINDER ASSY., MASTER	1	1070755	EO, F, IT
	45500-346-681	CYLINDER ASSY., MASTER	1	1070755	D, G
2	45502-300-305	PISTON SET	1		
3	45504-300-003	BOOT	1		
4	45505-300-003	STOPPER, BOOT	1		
5	45506-300-003	SPRING COMP.	1		
6	45512-300-003	WASHER 10.5MM	1		
7	45513-341-671	CAP, OIL CUP	1		D, EO, F, G, IT
	45513-341-770	CAP, OIL CUP	1		A
8	45517-300-003	HOLDER, MASTER CYLINDER	1		
9	45520-300-000	DIAPHRAGM	1		
10	45521-300-010	PLATE, DIAPHRAGM	1		
11	45526-341-000	BUSH, RIGHT HANDLE LEVER	1		
12	45527-300-000	PLATE, LEVER BUSH SETTING	1		
13	46125-533-003	CUP, PRIMARY	1		
14	46140-533-003	VALVE SET, CHECK	1		
15	53170-333-000	LEVER COMP., RIGHT STEERING HANDLE	1	1070754	
	53170-369-003				
	53170-369-003	LEVER COMP., RIGHT STEERING HANDLE (TOYOTA)	1	1070755	
16	50114-300-000	BOLT, HANDLE LEVER PIVOT	1		
17	50651-377-003	CIR CLIP, INTERNAL, 18MM	1		
18	52000-06025	BOLT, HEX., 6X25	2		
19	94001-06000	NUT, HEX., 6MM	1		
20	54101-06000	WASHER, PLAIN, 6MM	2		
21	55010-16000	CAP & CONTROL LEVER	1	1070754	



F-5 Front Brake Hose

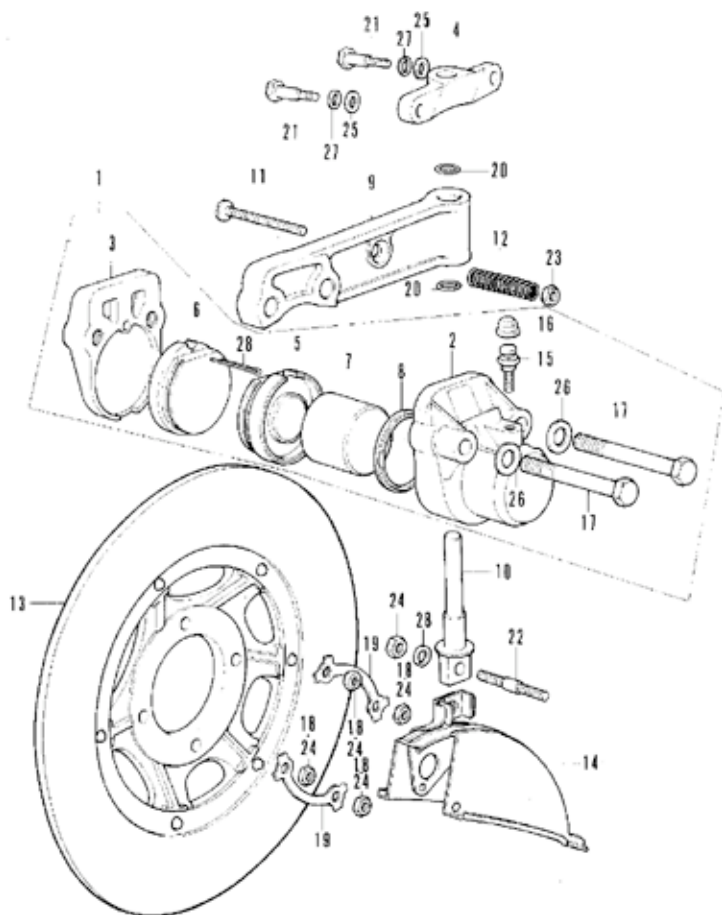


F-5 Front Brake Hose

Ref. No.	Part No.	Description	Reed. No. CB350F	Serial No.	Expert Area
1	35350-300-006	SWITCH ASSY, STOP 35350-300-016	1		A+D+E+F+G
2	45125-300-020	SWITCH, STOP (NAILS)	1		
3	45126-300-011	HOSE B, FRONT BRAKE	1		F+G
4	45126-333-000	HOSE B, FRONT BRAKE	1		A+D+E+F+J
5	45127-323-000	JOINT, 3 WAY	1		
6	45128-317-701	PIPE, FRONT BRAKE	1		
7	45146-300-000	GROMMET, BRAKE HOSE	1		
8	45522-300-010	BOOT, MASTER CYLINDER	1		
9	53208-317-700	HOLDER, 3WAY JOINT	1		
10	90145-300-000	BOLT, OIL	3		
11	90545-300-000	WASHER, OIL BOLT	7		
12	92000-06028	BOLT, HEX., 6X28	1		
13	94111-06000	WASHER, SPRING, 6PH	1		



F-6 Front Brake Caliper · Disk

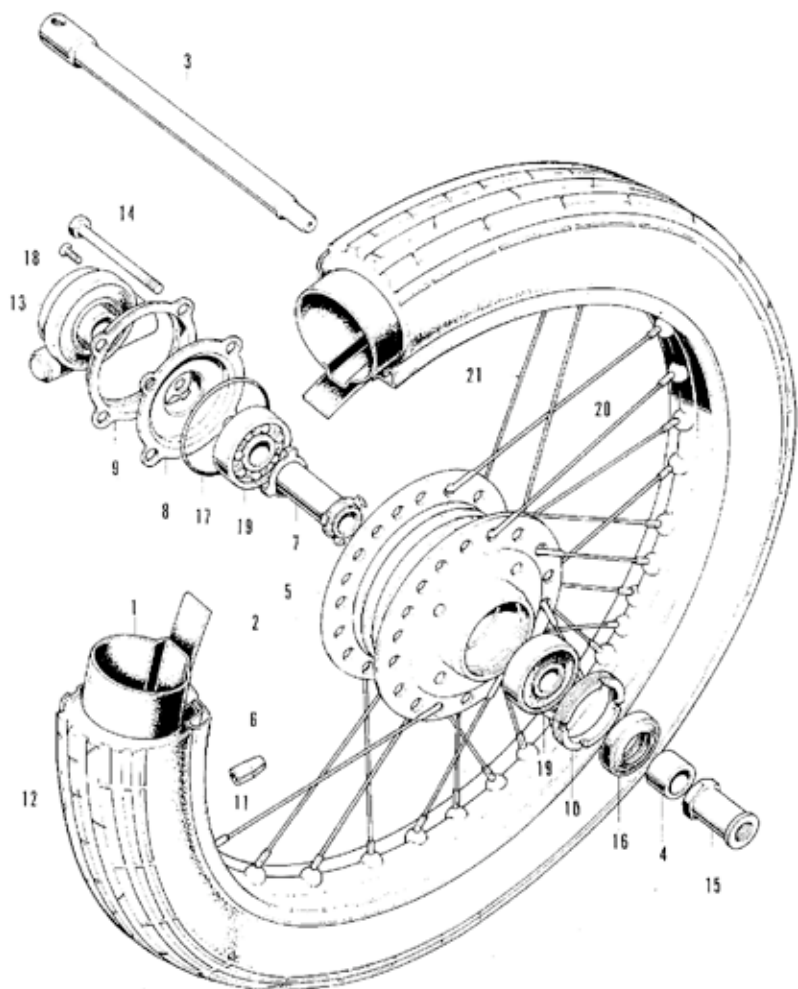


F-6 Front Brake Caliper - Disk

Ref. No.	Part No.	Description	Reqd. No. CB330F	Serial No.	Export Area
1	45100-323-043	CALIPER ASSY. (TOKIKO)	1		
2	45101-323-013	CALIPER A (TOKIKO)	1		
3	45102-323-003	CALIPER B (TOKIKO)	1		
4	45104-317-700	JOINT, CALIPER HOLDER	1		
5	45105-323-043	PAD COMP. A (TOKIKO)	1		
6	45106-323-006	PAD COMP. B (SAHII)	1		A+D+ED+F+G
	45106-323-013	PAD COMP. P (TOKIKO)	1		
7	45107-323-020	PISTON COMP.	1		
8	45108-300-003	SEAL, PISTON (TOKIKO)	1		
9	45115-323-010	HOLDER, CALIPER	1		
10	45116-323-010	PIN, CALIPER HOLDER	1	1055093	A+D+ED+F+G
	45116-323-020	PIN, CALIPER HOLDER	1	1055094	A+D+ED+F+G IF
11	45117-300-020	BOLT, CALIPER ADJUSTING	1		
12	45119-333-000	SPRING, CALIPER ADJUST	1		
13	45120-317-701	DISK COMP., FRONT BRAKE	1	1065402	
	45120-369-000	DISK COMP., FRONT BRAKE	1	1065403	
14	45140-333-000	COVER COMP., DISK	1		
15	45224-579-013	VALVE, BLEEDER	1		
16	45225-579-013	CAP, BLEEDER	1		
17	90165-323-000	BOLT, CALIPER SETTING	2		
18	90309-357-000	NUT, HEX., 8MM	4	1070100	
19	90522-317-700	WASHER, TONGUED, 8MM	2	1070099	
20	91259-333-000	O-RING, 9.5X1.7	2		
21	92200-06028	BOLT, HEX., 6X28	2		
22	92700-08045	BOLT, STUD, 8X45	1		
23	94001-06000	NUT, HEX., 6MM	1		
24	94001-08000-05	NUT, HEX., 8MM / 1070099 (5)	1	1070100	
25	94101-06000	WASHER, PLAIN, 6MM	2		
26	94102-10000	WASHER, PLAIN, 10MM	2		
27	94111-06000	WASHER, SPRING, 6MM	2		
28	94111-08000	WASHER, SPRING, 8MM	1		
29	94201-16220	PIN, SPLIT, 1.6X22	1		



F-7 Front Wheel

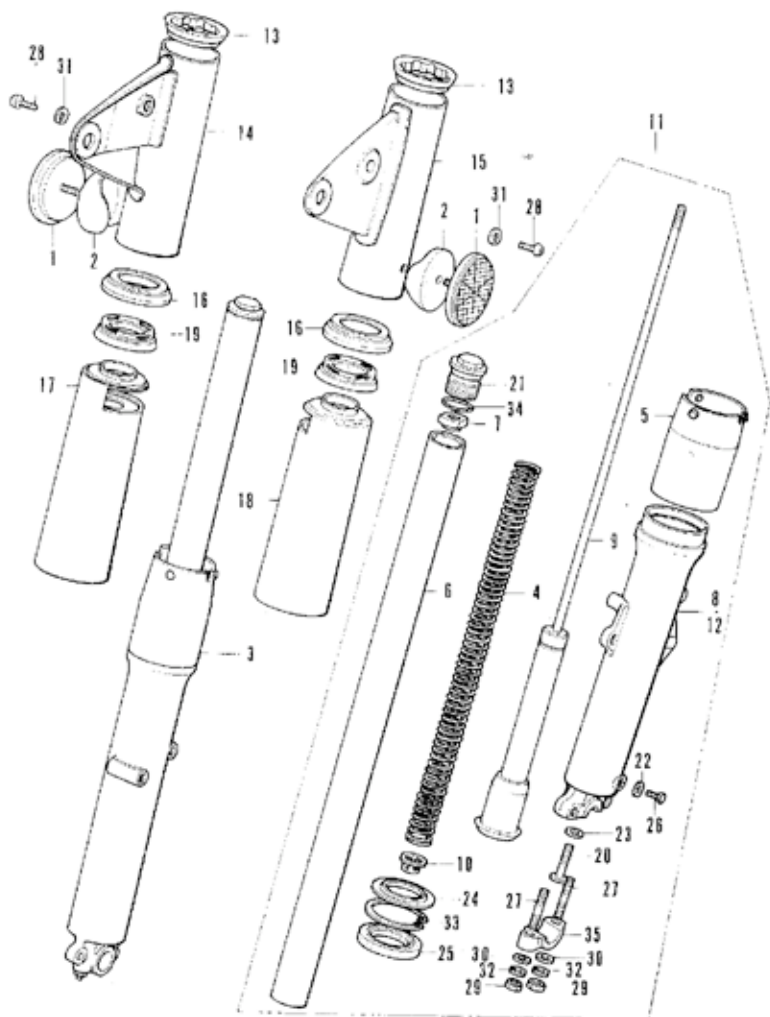


F-7 Front Wheel

Ref. No.	Part No.	Description	Regd. No. CB350F	Serial No.	Export Area
1	42712-268-000	TUBE, REAR WHEEL (3.00-18)	1		
2	42713-268-000	FLAP, REAR TUBE (18)(RS)	1		
3	44301-312-000	AXLE, FRONT WHEEL	1		
4	44311-300-000	COLLAR, FRONT WHEEL SIDE	1		
5	44601-317-702	HUB, FRONT WHEEL	1		
6	44606-283-000	BALANCER (20G)	N		
	44607-283-000	BALANCER (15G)	N		
	44608-283-000	BALANCER (10G)	N		
	44609-283-000	BALANCER (5G)	N		
7	44620-317-701	COLLAR, FRONT AXLE DISTANCE	1		
8	44641-333-000	RETAINER COMP., GEAR BOX	1		
9	44642-317-701	COVER, GEAR BOX RETAINER	1		
10	44643-300-000	RETAINER, FRONT WHEEL BEARING	1		
11	44701-317-701	RIM, FRONT WHEEL (18)	1		
12	44711-333-003	TIRE, FRONT WHEEL (3.00-18) (RS)	1		
13	44800-317-700	CASING ASSY, SPEEDOMETER GEAR	1		
14	90122-317-702	BOLT, 8X90	4		
15	90305-333-000	NUT, FRONT WHEEL AXLE	1		
16	91252-300-003	DUST SEAL, 22X36X8	1		
17	91302-317-700	O-RING, RETAINER	1		
18	93700-05016-0A	SCREW, OVAL, 5X16	1		
19	96140-63020-10	BEARING, RADIAL BALL, 6302	2		
20	97311-69233-10	SPOKE, RS 8X196.5 (INSIDE)	1R		
21	97716-69232-10	SPOKE, RS 8X196.0 (OUTSIDE)	1R		



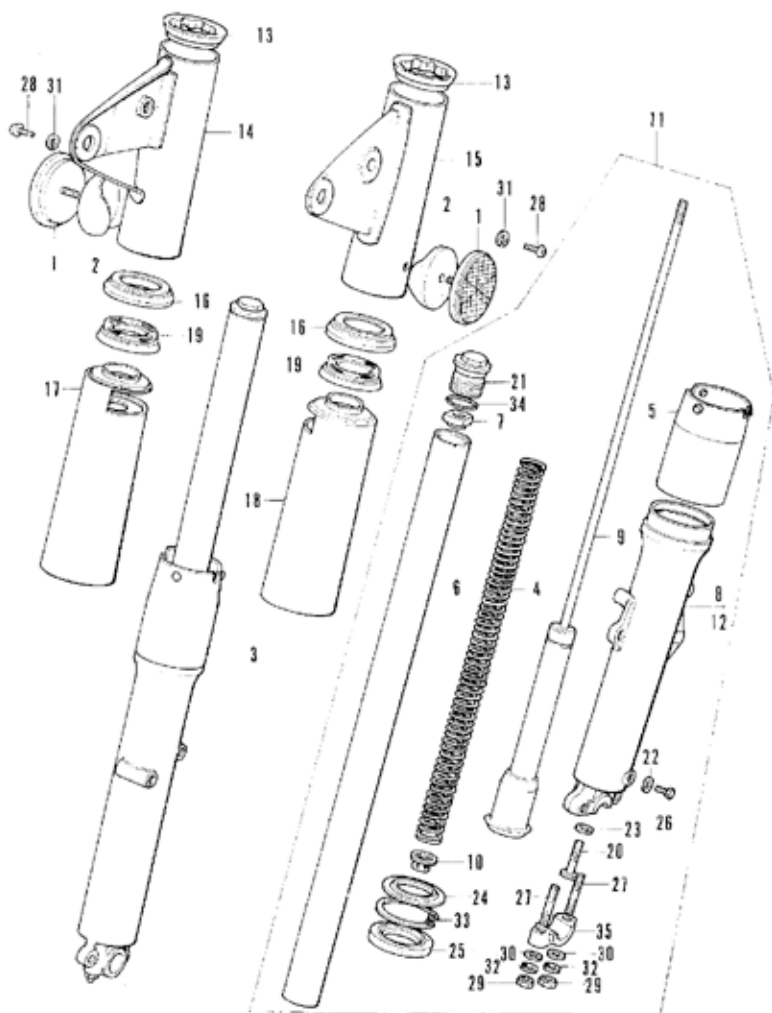
F-8 Front Fork



F-8 Front Fork

Ref. No.	Part No.	Description	Reqd. No. CBI50F	Serial No.	Export Area
1	33741-340-670	REFLECTOR, FRONT REFLEX	2	1055163 F	A+D+ED+G+H
2	33743-341-670	BASE, FRONT REFLEX REFLECTION	2	1055163 F	A+D+ED+G+H
3	51400-333-000	FORK ASSY., RIGHT FRONT	1		
4	51401-333-000	SPRING, FRONT SHOCK ABSORBER	2		
5	51402-333-000	COVER, BOTTOM CASE	2		
6	51410-317-700	PIPE, FRONT FORK	2		
7	51413-317-700	NUT, LOCK	2		
8	51421-333-000	CASE, RIGHT FRONT FORK BOTTOM	1		
9	51430-333-000	DAMPER COMP.	2		
10	51461-317-701	SEAT, SHOCK ABSORBER SPRING	2		
11	51500-333-000	FORK ASSY., LEFT FRONT	1		
12	51521-333-000	CASE, LEFT FRONT FORK BOTTOM	1		
13	51601-317-700	ABSORBER A, FORK COVER SHOCK	2		
14	51602-333-000HX	COVER, RIGHT FRONT FORK UPPER	1		D+ED+F+G+H
	51602-333-000LY	COVER, RIGHT FRONT FORK UPPER	1		
	51602-333-000NQ	COVER, RIGHT FRONT FORK UPPER	1		D+ED+F+G+H
	51602-333-000PJ	COVER, RIGHT FRONT FORK UPPER	1		A+D
15	51606-333-000HX	COVER, LEFT FRONT FORK UPPER	1		D+ED+F+G+H
	51606-333-000LY	COVER, LEFT FRONT FORK UPPER	1		
	51606-333-000NQ	COVER, LEFT FRONT FORK UPPER	1		D+ED+F+G+H
	51606-333-000PJ	COVER, LEFT FRONT FORK UPPER	1		A+D
16	51608-266-010	RIB, FRONT FORK	2		
17	51611-344-670HX	COVER, FRONT FORK UNDER	1		D+ED+F+G+H
	51611-344-670LY	COVER, FRONT FORK UNDER	1		
	51611-344-670NQ	COVER, UNDER FRONT FORK	1		D+ED+F+G+H
	51611-344-670PJ	COVER, UNDER FRONT FORK	1		A+D
18	51612-333-000HX	COVER, LEFT FRONT FORK UNDER	1		D+ED+F+G+H
	51612-333-000LY	COVER, LEFT FRONT FORK UNDER	1		
	51612-333-000NQ	COVER, LEFT FRONT FORK UNDER	1		D+ED+F+G+H
	51612-333-000PJ	COVER, LEFT FRONT FORK UNDER	1		A+D
19	51622-266-010	ABSORBER R, FRONT FORK COVER SHOCK	2		

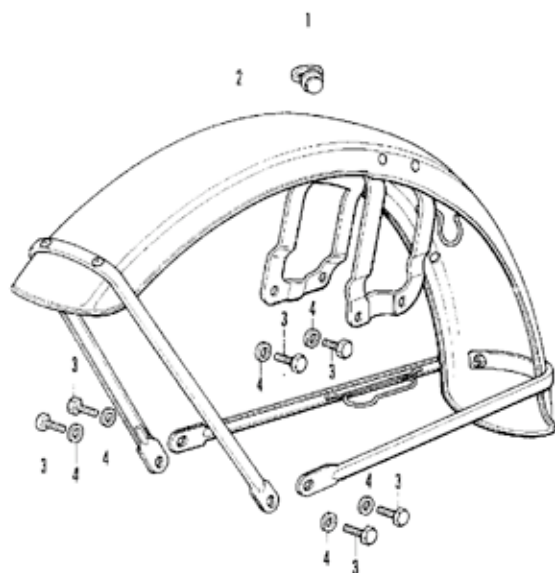
F-8 Front Fork



F-8 Front Fork

Ref. No.	Part No.	Description	Reqd. No. CB310F	Serial No.	Export Area
20	90116-283-010	BOLT, SOCKET, 8MM	2		
21	90123-317-700	BOLT, FRONT FORK	2		
22	90543-273-000	PACKING, FRONT FORK DRAIN COCK	2		
23	90544-283-000	WASHER, SPECIAL, 8MM	2		
24	91254-333-010	DUST SEAL, 33X47X10	2		
25	91255-312-003	OIL SEAL, 33X46X10.2	2		
26	92000-06008	BOLT, HEX., 6X8	2		
27	92700-06050-30	BOLT, STUD, 8X50	4		
28	93500-06008-02	SCREW, PAN, 6X8	2	1055164	F
29	94030-08000	NUT, HEX., 8MM	4		
30	94101-08000	WASHER, PLAIN, 8MM	4		
31	94111-06000	WASHER, SPRING, 6MM	2	1055164	1067184 F
	94101-06000	WASHER, PLAIN, 6MM	2	1067184	F
32	94111-08000	WASHER, SPRING, 8MM	4		
33	94521-47000	CIF CLIP, INTERNAL, 47MM	2		
34	94608-30000	O-RING, 23X2.4	2		
35	95014-41000	HOLDER, AXLE	2		

F-9 Front Fender



F-9 Front Fender

Ref. No.	Part No.	Description	Reqd. No. CB350F	Serial No.	Export Area
1	45451-283-000	GROMMET, WIRE	1		
2	61100-333-000X	FENDER COMP., FRCAF	1		
3	92000-06016	BOLT, HEX., 6X16	6		
4	54101-06000	WASHER, PLAIN, 6PF	6		

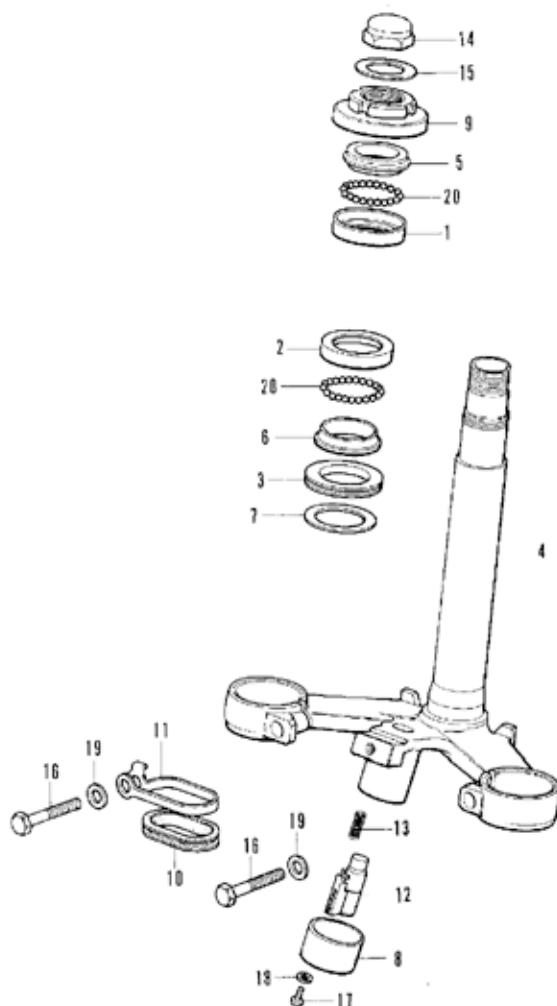
Courtesy of



Honda4Fun

www.honda4fun.comwww.honda4fun.com

F-10 Steering Stem

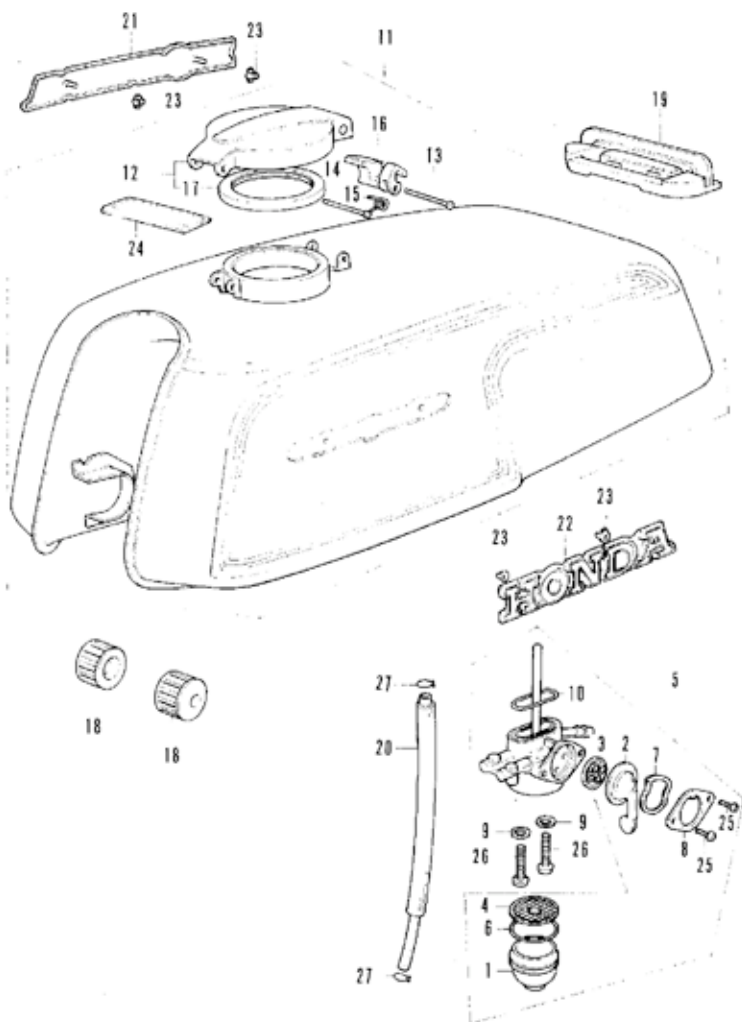


F-10 Steering Stem

Ref. No.	Part No.	Description	Req. No. CB350F	Serial No.	Export Area
1	50301-268-305	RACE, STEERING TOP BALL	1		
2	50302-268-305	RACE, STEERING BOTTOM BALL	1		
3	53124-250-000	SEAL, STEERING HEAD DUST	1		
4	53200-333-000B	STEM COMP., STEERING	1		A+D
→ 5	53200-333-610B	STEM COMP., STEERING	1		F0+I, G+IT
5	53211-268-305	RACE, STEERING TOP CONE	1		
6	53212-250-305	RACE, STEERING BOTTOM CONE	1		
7	53215-250-000	WASHER, STEERING HEAD DUST SEAL	1		
8	53215-317-000	COVER COMP., HANDLE LOCK CASE	1		A+D
9	53220-286-000	THREAD COMP., STEERING HEAD TOP	1		
10	53225-333-000	GUIDE, INNER CABLE	1		
11	53226-333-000	BRACKET, CABLE GUIDE	1		
12	53600-230-004	LOCK COMP., STEERING HANDLE (TOYO)	1		A+D
13	53631-268-020	SPRING, HANDLE LOCK	1		A+D
14	90304-323-670	NUT, STEERING STEM	1		
15	90503-283-000	WASHER, STEERING STEM	1		
16	92000-08032-0A	BOLT, HEX., BX32	2		
17	93500-03008-0A	SCREW, PAN, 3X8	1		A+D
18	94101-03000	WASHER, PLAIN, 3PP	1		A+D
19	94101-06000	WASHER, PLAIN, 8PP	2		
20	96211-08000	BALL, STEEL, #0	37		



F-11 Fuel Tank - Cock

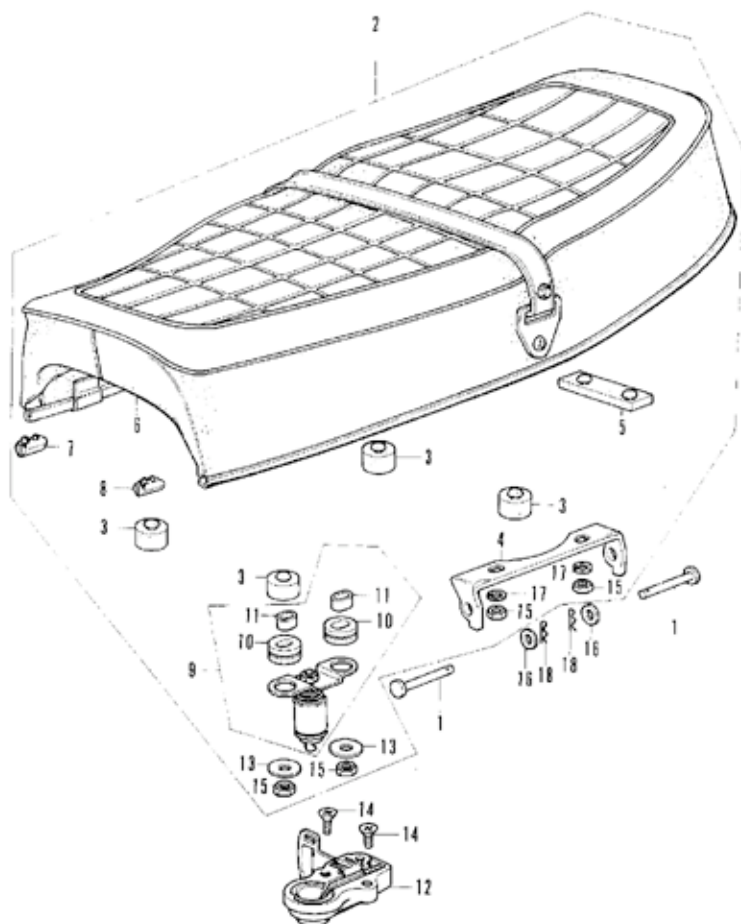


F-11 Fuel Tank - Cock

Ref. No.	Part No.	Description	Reqd. No. CB356F	Serial No.	Export Area
1	16952-268-000	CUP, FUEL STRAINER	1		
2	16953-268-020	LEVER, FUEL COCK	1		
3	16955-268-020	GASKET, COCK VALVE	1		
4	16957-268-010	SCREEN, FUEL STRAINER	1		
5	16957-333-025	COCK ASSY., FUEL	1		
6	16958-268-010	O-RING	1		
7	16960-268-010	SPRING, COCK LEVER	1		
8	16961-268-010	PLATE, FUEL COCK LEVER SETTING	1		
9	16993-011-000	GASKET, COCK FIXING	2	1069599	
10	16997-273-006	O-RING, 23MM	1		
11	17500-333-610HX	TANK ASSY., FUEL	1		G
	17500-333-610LY	TANK ASSY., FUEL	1		G
	17500-333-610NQ	TANK ASSY., FUEL	1		G
	17500-333-620HX	TANK ASSY., FUEL	1		F
	17500-333-620LY	TANK ASSY., FUEL	1		F
	17500-333-620NQ	TANK ASSY., FUEL	1		F
	17500-333-671HX	TANK ASSY., FUEL	1		OxEO, IT
	17500-333-671LY	TANK ASSY., FUEL	1		AxDO, IT
	17500-333-671NQ	TANK ASSY., FUEL	1		OxEO, IT
	17500-333-671PJ	TANK ASSY., FUEL	1		AxDO
12	17510-323-310	CAP COMP., FUEL TANK	1		
13	17513-300-300	PIN, FUEL FILLER CAP CHECK	1		
14	17514-323-300	PIN R, FUEL FILLER CAP	1		
15	17515-300-300	SPRING, FUEL FILLER CAP CHECK	1		
16	17517-300-340	CHECK, FUEL FILLER CAP	1		
17	17534-323-300	GASKET, FUEL FILLER	1		
18	17611-286-000	CUSHION, FUEL TANK FRONT	2		
19	17613-333-010	PAD, FUEL TANK RE	1		
20	17681-333-000	TUBE, FUEL	1		
21	87121-333-000	EMELFP, RIGHT FUEL TANK	1		
22	87122-333-000	EMOLEP, LEFT FUEL TANK	1		
23	87311-516-000	NUT, REAR ORNAMENT CLAMP	4		
24	87560-323-611A	MARK, DRIVE CAUTION	1		G
	87560-323-611B	MARK, DRIVE CAUTION	1		G
	87560-323-621A	MARK, DRIVE CAUTION	1		F
	87560-323-621B	MARK, DRIVE CAUTION	1		F
	87560-323-670A	MARK, DRIVE CAUTION *AH-D*	1		AxDO, IT
	87560-323-670B	MARK, DRIVE CAUTION	1		OxEO, IT
25	93500-03006-02	SCREW, PAN, 3X6	2		
26	53500-06028	SCREW, PAN, 6X28	2		
27	55002-02080	CLIP, TUBE, HR	2		



F-12 Seat

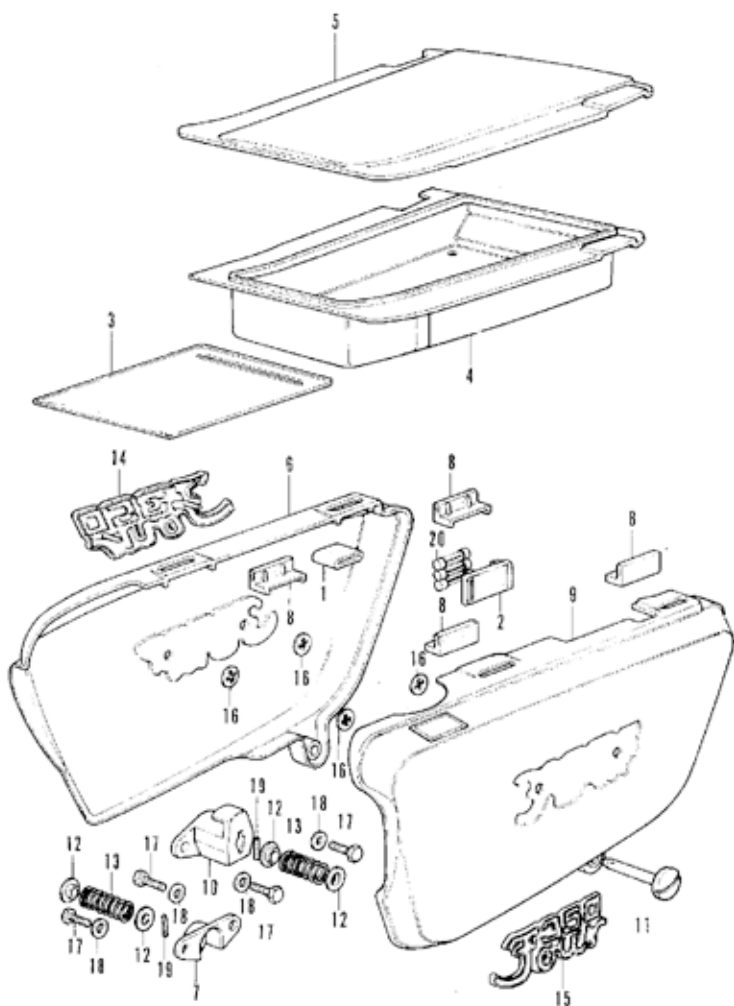


F-12 Seat

Ref. No.	Part No.	Description	Reqd. No. CH350F	Serial No.	Export Area
1	77103-313-000	BAR, SEAT HINGE	2		
2	77200-333-000A	SEAT COMP.	1		
3	77201-074-000	RUBBER, SEAT CUSHION	4		
4	77201-333-000	KINCF, SEAT	1		
5	77204-312-000	RUBBER, SEAT SETTING	1		
6	77210-333-810	LEATHER COMP., SEAT	1		
7	77211-323-300	GARNISH, RIGHT SEAT MOLD	1		
8	77212-323-300	GARNISH, LEFT SEAT MOLD	1		
9	77220-340-011	BAR ASSY., SEAT LOCK	1		
10	77220-340-001	RUBBER, LOCK BAR CUSHION	2		
11	77229-340-001	COLLAR, SEAT LOCK BAR	2		
12	77230-347-003	LOCK ASSY., SEAT (TOYOT)	1		
13	90514-700-000	WASHER, TANK COLLAR LOCK	2		
14	93600-06012-07	SCREW, FLAT, 6X12	2		
15	94001-06000	NUT, HEX., 6MM	4		
16	94101-06000	WASHER, PLAIN, 6MM	2		
17	94111-06000	WASHER, SPRING, 6MM	2		
18	94251-06000	PIN, LOCK, 6MM	2		



F-13 Side Cover • Tool Tray

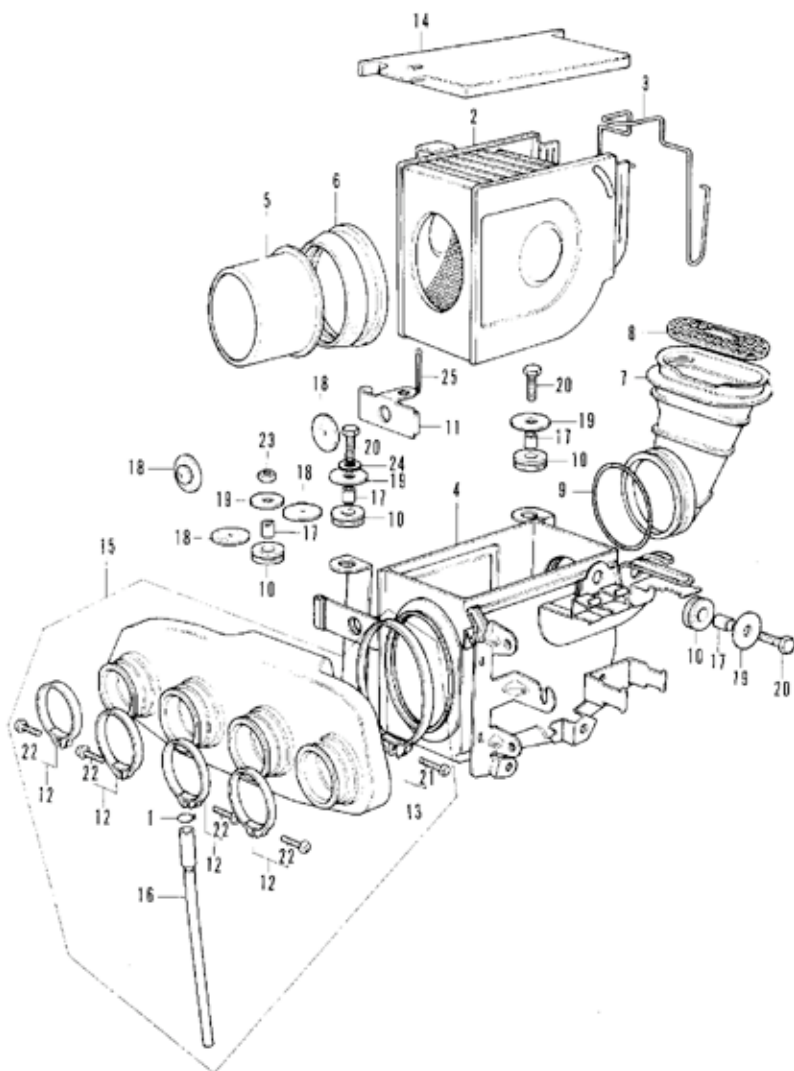


F-13 Side Cover - Tool Tray

Ref. No.	Part No.	Description	Req. No. CB350F	Serial No.	Export Area
1	31503-044-670	RUBBER BATTERY MOUNT	1		
2	38205-115-000	CASE, FUSE	1		
3	17251-342-000	BAG, SERVICE BOOK	1		
4	83501-333-020	TRAY, TOOL	1		
5	83502-333-000	LID, TOOL TRAY	1		
6	83600-333-010HX	COVER, RIGHT SIDE	1		D, E, F, G, H
	83600-333-010LY	COVER, RIGHT SIDE	1		
	83600-333-010NW	COVER, RIGHT SIDE	1		D, E, F, G, H
	83600-333-010PJ	COVER, RIGHT SIDE	1		A, D
7	83601-333-000	HOLDER, RIGHT SIDE COVER UNDER	1		
8	83621-333-000	GROMMET, SIDE COVER	4		
9	83700-333-010HX	COVER, LEFT SIDE	1		D, E, F, G, H
	83700-333-010LY	COVER, LEFT SIDE	1		
	83700-333-010NQ	COVER, LEFT SIDE	1		D, E, F, G, H
	83700-333-010PJ	COVER, LEFT SIDE	1		A, D
10	83701-333-000	HOLDER, LEFT SIDE COVER UNDER	1		
11	83703-333-000	PIN, SIDE COVER	2		
12	83704-333-000	GUIDE, SPRING	4		
13	83705-333-000	SPRING, SIDE COVER SET	2		
14	87129-333-000	EMBLEM, RIGHT SIDE COVER	1		
15	87129-333-000	EMBLEM, LEFT SIDE COVER	1		
16	90313-512-000	NUT, PUSH, 3PP	4		
17	92000-06C16	BOLT, HEX., 6X16	4		
18	94101-06C00	WASHER, PLAIN, 6PP	4		
19	94305-20143	PIN, SPRING, 2X14	2		
20	98200-11500	FUSE, 15A (SPARE PARTS)	3		



F-14 Air Cleaner

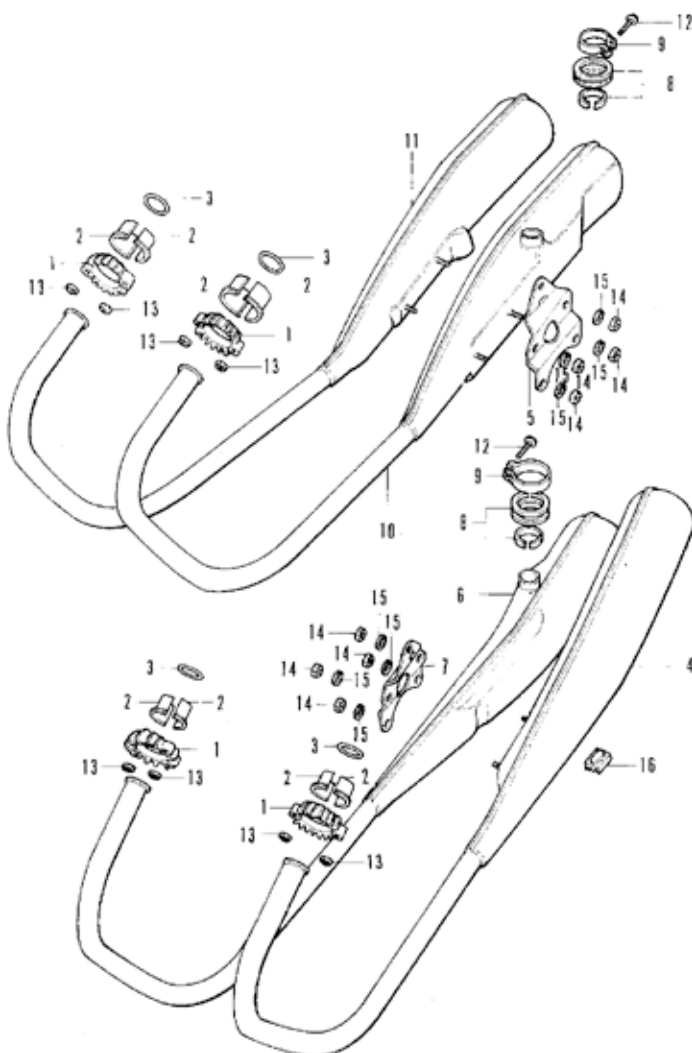


F-14 Air Cleaner

Ref. No.	Part No.	Description	Reqd. No. CR350F	Serial No.	Export Area
1	15772-292-010	CLIP, BREATHER TUBE	1		
2	17210-333-015	ELEMENT, AIR CLEANER 17210-333-610	1	1055093	A+D
	17210-333-610	ELEMENT, AIR CLEANER	1	1055094	A+D ED, F, G, JI
3	17216-333-010	SPRING, CLEANER ELEMENT	1		
4	17230-333-010	CASE COMP., AIR CLEANER	1	1055093	A+D
	17230-333-610	CASE COMP., AIR CLEANER	1	1055094	A+D ED, F, G, JI
5	17235-333-000	GUIDE, AIR DUCT	1		
6	17236-333-000	SEAL, AIR CLEANER ELEMENT	1		
7	17240-333-000	DUCT, AIR CLEANER INLET	1		
8	17241-333-000	NET, AIR INLET	1		
9	17242-333-000	BAND, AIR CLEANER INLET	1		
10	17245-107-010	RUBBER, AIR CLEANER CASE MOUNT	4		
11	17252-333-000	PLATE, BATTERY HINGE	1		
12	17255-333-000	BAND A, CLEANER CONNECTING TUBE	4		
13	17256-333-000	BAND B, CLEANER CONNECTING TUBE	1		
14	17260-333-000	LID, AIR CLEANER CASE	1		
15	17300-333-000	CHAMBER ASSY., AIR CLEANER	1		
16	17335-323-000	TUBE ASSY., BREATHER	1		
17	33603-053-650	COLLAR, REAR TURN SIGNAL STAY	4		
18	33614-323-000	RUBBER, BATTERY BOX	4		
19	90501-040-000	WASHER, SEAT SLIDING	4	1055093	
	90506-500-000	WASHER, AIR DUCT	4	1055094	
20	52000-06020	BOLE, HEX., 6X20	3		
21	93500-05016-0A	SCREW, PAN., 5X16	1		
22	93500-05020-0A	SCREW, PAN., 5X20	4		
23	94001-06000	NUT, HEX., 6MM	1		
24	54101-06000	WASHER, PLAIN, 6MM	1		
25	54201-30450	PIN, SPL IT, 3.0X45	1		



F-15 Exhaust Muffler

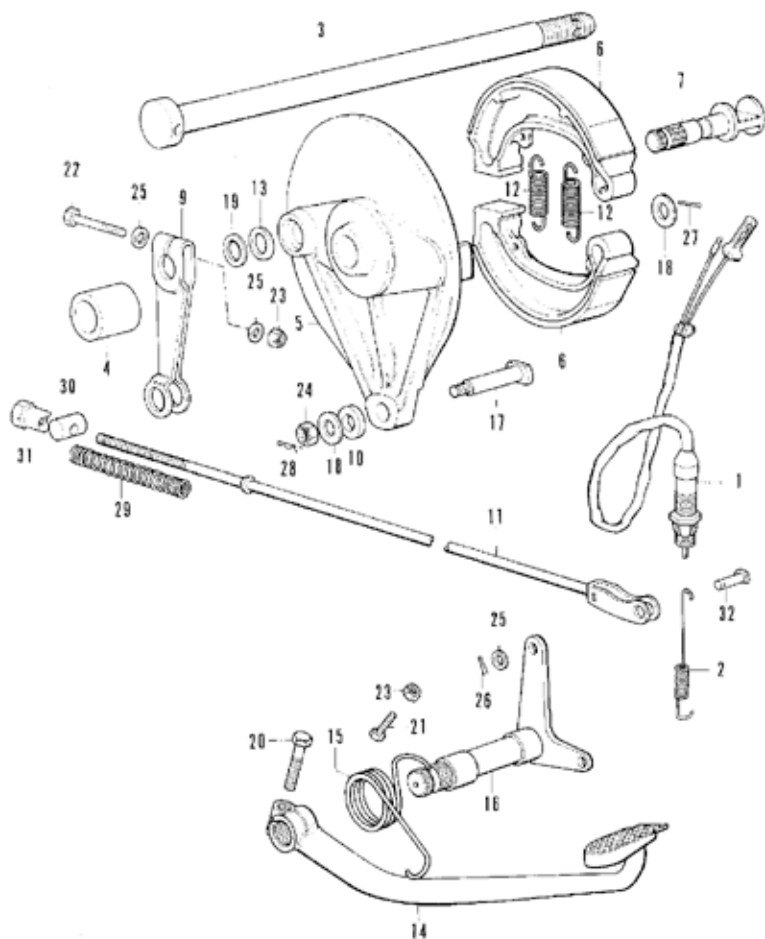


F-15 Exhaust Muffler

Ref. No.	Part No.	Description	Reqd. No. CD350F	Serial No.	Export Area
1	18231-333-010	JOINT, EXHAUST PIPE	4		
2	18233-303-010	COLLAR, EXHAUST PIPE JOINT	8		
3	18291-028-000	GASKET, EXHAUST PIPE	4		
4	18300-333-010	MUFFLER COMP. 1, EXHAUST 18300-333-610	1	1055093 A+B	
	18300-333-610	MUFFLER COMP. 1, EXHAUST	1	1055094	A+B C,D,E,F,G
	18300-333-710	MUFFLER COMP. 1, EXHAUST	1		IT
5	18325-333-000	BRACKET, RIGHT MUFFLER	1		
6	18400-333-010	MUFFLER COMP. 2, EXHAUST 18400-333-610	1	1055093 A+B	
	18400-333-610	MUFFLER COMP. 2, EXHAUST	1	1055094	A+B C,D,E,F,G
	18400-333-710	MUFFLER COMP. 2, EXHAUST	1		IT
7	18425-333-000	BRACKET, LEFT MUFFLER	1		
8	18472-300-000	TUBE, MUFFLER CONNECTING	2		
9	18473-300-000	BAND, MUFFLER CONNECTING	2		
10	18500-333-010	MUFFLER COMP. 3, EXHAUST 18500-333-610	1	1055093 A+B	
	18500-333-610	MUFFLER COMP. 3, EXHAUST	1	1055094	A+B C,D,E,F,G
	18500-333-710	MUFFLER COMP. 3, EXHAUST	1		IT
11	18600-333-010	MUFFLER COMP. 4, EXHAUST 18600-333-610	1	1055093 A+B	
	18600-333-610	MUFFLER COMP. 4, EXHAUST	1	1055094	A+B C,D,E,F,G
	18600-333-710	MUFFLER COMP. 4, EXHAUST	1		IT
12	93500-05016-00	SCREW PAN, 5X16	2		
13	94001-06000	NUT, HEX., 8MM	8		
14	94001-06000-05	NUT, HEX., 8MM	8		
15	94111-08000	WASHER, SPRING, 8MM	8		
16	95011-64000	RUBBER D, STAND STOPPER	1		



F-16 Rear Brake Pedal • Panel

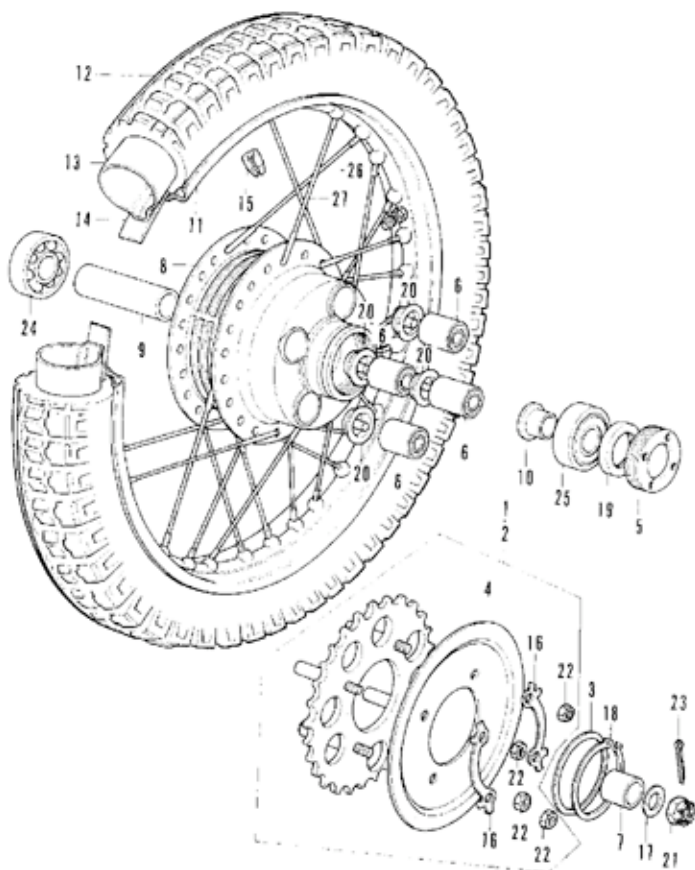


F-16 Rear Brake Pedal - Panel

Ref. No.	Part No.	Description	Read. No. CB350F	Serial No.	Export Area
1	35350-336-000	SWITCH ASSY., STOP	1		
2	35357-011-000	SPRING, STOP SWITCH	1		
3	42301-286-010	AXLE, REAR WHEEL	1		
4	42313-286-000	COLLAR, REAR BRAKE PANEL SIDE	1		
5	43100-333-000	PANEL COMP., REAR BRAKE	1		
6	43120-286-000	SHOE COMP., REAR BRAKE	2		
7	43141-286-010	CAM, REAR BRAKE	1		
9	43410-286-000	ARM, REAR BRAKE	1		
10	43434-286-000	RUBBER, STOPPER ARM CUSHION	1		
11	43451-316-670	ROD COMP., REAR BRAKE	1	1067974	
	43451-354-000	ROD COMP., REAR BRAKE	1	1067975	
12	45133-240-000	SPRING, FRONT BRAKE SHOE	2	1013842	A
	45133-329-000	SPRING, FRONT BRAKE SHOE	2	1013843	A D+E+G+H
13	45134-250-000	SEAL, BRAKE CAM CUST	1		
14	46500-333-010	PEDAL COMP., BRAKE	1		
15	46514-333-000	SPRING, BRAKE PEDAL	1		
16	46515-333-000	SHAFT COMP., REAR BRAKE PIVOT	1		
17	50127-283-000	BOLT, REAR BRAKE PANEL STOPPER	1		
18	50524-030-000	WASHER A, HANDLE HOLDER SETTING	2		
19	50549-121-000	WASHER, PLAIN, 14MM	1 1	1013843	A D+E+F+G+H
20	52000-08028-04	BOLT, HEX., 6X28	1		
21	52023-06025	BOLT, HEX., 6X25	1		
22	52200-06036	BOLT, HEX., 6X36	1		
23	54001-06000	NUT, HEX., 6MM	2		
24	94001-08000-05	NUT, HEX., 8MM	1		
25	94101-06000	WASHER, PLAIN, 6MM	3		
26	94201-16120	PIN, SPLIT, 1.6X12	1		
27	94201-20150	PIN, SPLIT, 2.0X15	1		
28	94251-08000	PIN, LOCK, 8MM	1		
29	95014-73300	SPRING C, BRAKE ROD	1		
30	95015-32000	JOINT B, BRAKE ARM	1	1069999	
	43453-250-000	JOINT, REAR BRAKE ARM	1	1070000	
31	95015-42000	NUT B, ADJUST	1		
32	95015-51000	PIN A, JOINT	1	1067974	
	95015-52000	PIN B, JOINT	1	1067975	



F-17 Rear Wheel

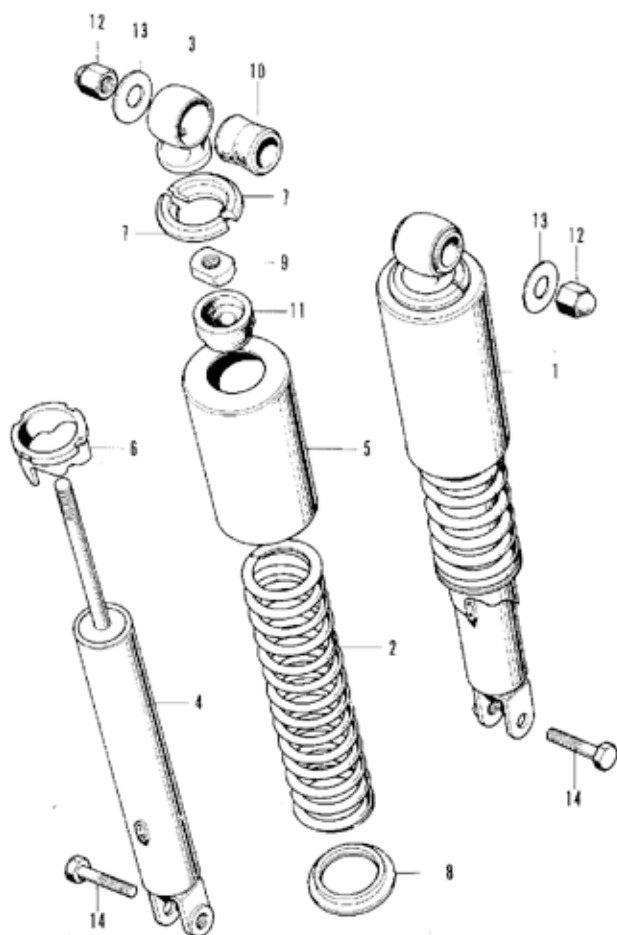


F-17 Rear Wheel

Ref. No.	Part No.	Description	Reqd. No. CB350F	Serial No.	Export Area
1	41200-333-000	SPROCKET ASSY., FINAL DRIVEN	1		6x0xEOx1x5
2	41200-333-710	SPROCKET ASSY., FINAL DRIVEN	1		11
3	41202-286-000	WASHER, 70MM	1		
4	41211-333-000	PLATE, SPROCKET SIDE	1		
5	41231-286-000	RETAINER, REAR WHEEL BEARING	1		
6	41241-286-000	BUSH, REAR WHEEL DAMPER	4		
7	42311-286-000	COLLAR, REAR WHEEL SHIF	1		
8	42601-333-000	MUR COMP., REAR WHEEL	1		
9	42620-286-000	COLLAR A, REAR AXLE DISTANCE	1		
10	42625-286-000	COLLAR B, REAR AXLE DISTANCE	1		
11	42701-286-003	RIM, REAR WHEEL (18)(0A100)	1	1072229	
	42701-290-003	RIM, REAR WHEEL (18)(0A100)	1	1072230	
12	42711-323-013	TIRE, REAR WHEEL (3.50-18)(HS)	1		
13	42712-287-000	TUBE, REAR WHEEL (3.50-18)	1		
14	42713-286-000	FLAP, REAR TUBE (18)(HS)	1		
15	44606-283-000	BALANCER (2CG)	N		
	44607-283-000	BALANCER (1SG)	N		
	44608-283-000	BALANCER (1CG)	N		
	44609-283-000	BALANCER (5G)	N		
16	9C522-286-000	WASHER, TONGUED, 10MM	2		
17	9C523-286-000	WASHER, 16.5X30	1		
18	9C665-286-000	CIR CLIP, EXTERNAL, 65MM	1		
19	51253-286-013	DUST SEAL, 30X45X5.5	1		
20	51303-333-000	PLUG, REAR WHEEL HUB	4		
21	54011-16220-05	NUT, CASTLE, 16MM	1		
22	54031-10000	NUT, HEX., 10MM	4		
23	54201-60300	PIN, SPLIT, 4.0X30	1		
24	56140-63030-10	BEARING, RADIAL BALL, 6303	1		
25	56140-63040-10	BEARING, RADIAL BALL, 6304	1		
26	97339-52159-10	SPOKE, R 9X159.5 (INSIDE)	1P	1072229	
	97339-52157-10	SPOKE, R 9X159.5 (INSIDE)	1P	1072230	
27	97715-52159-10	SPOKE, R 9X159 (OUTSIDE)	1R	1072229	
	97715-52156-10	SPOKE, R 9X159 (OUTSIDE)	1R	1072230	



F-18 Rear Shock Absorber



F-18 Rear Shock Absorber

Ref. No.	Part No.	Description	Reqd. No. CD130F	Serial No.	Export Area
1	52400-333-000X	ABSORBER, REAR SHOCK	2		
2	52401-317-700	SPRING, SHOCK ABSORBER	2		
3	52403-317-700	JOINT, UPPER	2		
4	52410-333-000	DAMPER COMP., REAR	2		
5	52421-292-670X	CASE, REAR SHOCK ABSORBER UPPER	2		
6	52422-331-003	ADJUSTER, REAR SHOCK ABSORBER SPRING	2		
7	52424-331-003	STOPPER, SPRING SEAT	4		
8	52458-317-700	SEAT, REAR SHOCK ABSORBER SPRING UNDER	2		
9	52482-331-003	NUT, LOCK, 9MM	2		
10	52484-292-000	RUBBER, JOINT	2		
11	52517-331-003	RUBBER, REAR SHOCK ABSORBER STOPPER	2		
12	60309-315-000	NUT, REAR SHOCK ABSORBER UPPER	2		
13	60527-230-000	WASHER, PLAIN, 10.3MM	2		
14	91000-10032-08	BOLT, HEX., 10X32	2		

F-19 Chain Case • Rear Fork

