

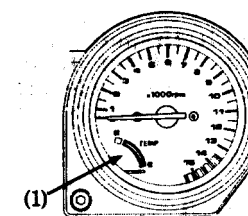
( Ref.No. ) Description	Function
(8) Oil pressure warning light	Lights when the engine oil pressure is below the normal operating range. Should light when ignition switch is ON and engine is not running. Should go out when the engine starts, except for occasional flickering at or near idling speed when engine is warm. <b>CAUTION:</b> * Running the engine with insufficient oil pressure may cause serious engine damage.
(9) Turn signal indicator	Flashes when either turn signal is operated.
(10) Neutral indicator (green)	Lights when the transmission is in neutral.
(11) High beam indicator (blue)	Lights when the headlight is on high beam.
(12) Tripmeter reset knob	Resets tripmeter to zero(0). Turn knob in direction shown.

### Coolant Temperature Gauge

When the needle begins to move above the C (Cold) mark, the engine is warm enough for the motorcycle to be ridden. The normal operating temperature range is within the wider section of the outlined band. If the needle reaches the H (Hot) mark, stop the engine and check the reserve tank coolant level. Read pages 23 - 24 and do not ride the motorcycle until the problem has been corrected.

#### CAUTION:

\* Exceeding maximum running temperature may cause serious engine damage.



(1) Coolant temperature gauge