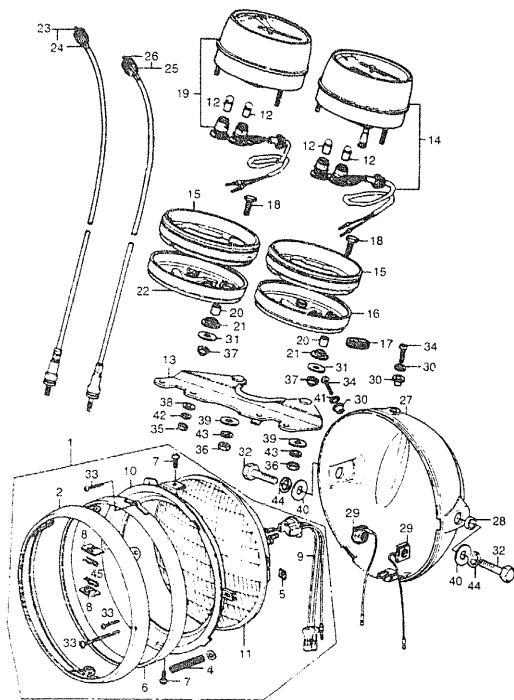


HEADLIGHT • SPEEDOMETER • TACHOMETER



F 13 374002

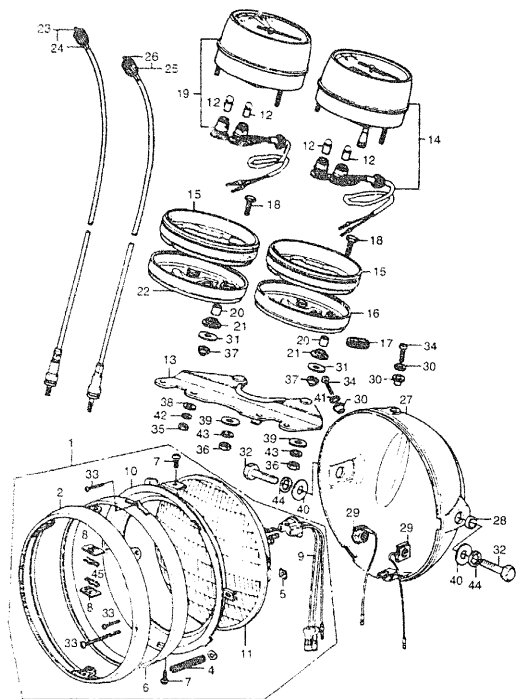
K = CB550
K1 = CB550K1
6 = CB550K76

Ref No.	BLOCK NO. DESCRIPTION	F-2	K	K1	6	FRAME SERIAL NUMBER	QTY REQ	PART NUMBER	HONDA CODE
1	HEADLIGHT ASSY. (12V 50/40W)		K	K1	6	-----	1	33100-34-1-701	0314690
2	RIM, HEADLIGHT		K	K1	6	-----	1	33101-300-673	0191668
3	SCREW, BEAM ADJ.		K	K1	6	-----	1	33103-309-003	0191676
	SCREW, BEAM ADJ.		K	K1	6	-----	1	33103-346-670	0398242
	SCREW, BEAM ADJ.		K	K1	6	-----	1	33103-371-980	0455576
4	SPRING, HEADLIGHT BEAM ADJ.		K	K1	6	-----	1	33107-300-003	0191684
5	NUT, HEADLIGHT BEAM ADJ.		K	K1	6	-----	1	33117-292-003	0146407
6	RING, RETAINING		K	K1	6	-----	1	33121-300-672	0191692
7	SCREW, UNIT HOLDER		K	K1	6	-----	2	33125-292-670	0146423
8	NUT, UNIT HOLDER		K	K1	6	-----	2	33128-292-670	0182261
9	SOCKET COMP., HEADLIGHT		K	K1	6	-----	1	33130-300-003	0191700
	SOCKET COMP., HEADLIGHT		K	K1	6	-----	1	33130-34-1-701	0314708
10	RING, SETTING		K	K1	6	-----	1	33153-300-671	0191718
11	BEAM UNIT, SEALED		K	K1	6	-----	1	33321-34-1-701	0314716
	BEAM UNIT, SEALED (12V50/40W STANLEY)		K	K1	6	-----	1	33321-371-672	0406090
12	BULB, DASH (12V3.4W) (IMASEN) ...		K	K1	6	-----	4	34902-259-000	0044909
13	PLATE, METER SET		K	K1	6	-----	1	37211-323-701	0362541
	PLATE, METER SETTING		K	K1	6	-----	1	37211-341-700	0314849
14	SPEEDOMETER ASSY. (MPH/KPH) (NIPPON SEIKI)		K	--	--	-----	1	37230-323-704	0362556
	SPEEDOMETER ASSY. (MPH/KPH) (NIPPON DENSO)		K	--	--	-----	1	37230-323-705	0312710
	SPEEDOMETER ASSY. (NIPPON SEIKI) ..		K	K1	--	-----	1	37200-374-671	0387787
	SPEEDOMETER ASSY. (ND)		K	K1	--	-----	1	37200-374-672	0387795
	SPEEDOMETER ASSY. (MPH)		--	6	--	-----	1	37200-390-771	0430371
	SPEEDOMETER ASSY. (ND)		--	6	--	-----	1	37200-390-772	0430389
15	RUBBER, SPEEDOMETER		K	K1	6	-----	2	37235-323-700	0312728
16	PLATE, SPEEDOMETER UNDER		K	K1	6	-----	1	37236-323-700	0312736
17	GROMMET, METER PLATE		K	K1	6	-----	1	37237-323-700	0314864
18	BOLT, INSTRUMENT SETTING 6MM		K	K1	6	-----	4	37238-323-700	0312744
19	TACHOMETER ASSY. (NIPPON SEIKI) ..		K	K1	--	-----	1	37240-323-773	0362566
	TACHOMETER ASSY. (ND)		K	K1	--	-----	1	37240-323-774	0312751

CONTENTS

TITLE	PAGE GRID
AIR CLEANER	76 E3
ALTERNATOR	24 B*2
BOLT	48 C12
BRAKE MASTER FR	132 G6
CABLE	50 D1
CAMSHAFT	10 E5
CARBURETOR	44 C10
CLUTCH	16 B8
CRANKCASE	40 C8
CRANKCASE COVER	16 B8
CRANKSHAFT	10 E5
CYLINDER	2 B1
CYLINDER	102 G6
EXHAUST MUFFLER	90 E9
FENDER FR	62 D7
FRAME	118 F11
FUEL TANK	76 E3
HANDLEBAR	50 D1
HEAD	2 B1
HEADLIGHT	56 D4
KICK STARTER SPINDLE	30 C3
OIL FILTER	40 C8
OIL PUMP	24 B12
SHOCK ABSORBER RR	98 F1
SPEEDOMETER	56 D4
STEERING STEM	62 D7
STEP	90 E9
SWINGARM	98 F1
TACHOMETER	56 D4
TAILLIGHT K	106 F5
TAILLIGHT K1-76	112 F8
TRANSMISSION	30 C3
TURN SIGNAL K	106 F5
TURN SIGNAL K1-76	112 F8
WASHER (CRANKCASE)	48 C12
WHEEL FR	70 D11
WHEEL RR	70 D11
WIRE HARNESS	118 F11

HEADLIGHT • SPEEDOMETER • TACHOMETER



F13374002

K = CB550 K1 = CB550K1 6 = CB550K76			CB550	CB550K1	CB550K76	FRAME SERIAL NUMBER		QTY	REO	PART NUMBER	HONDA CODE
Ref No.	BLOCK NO DESCRIPTION	F-2	K	K1	6	FROM	TO				
19	TACHOMETER ASSY. (NIPPON SEKI)	--	6					1		37250-390-771	0430397
	TACHOMETER ASSY. (ND)	--	6					1		37250-390-772	0430405
20	COLLAR, INSTRUMENT SETTING	K	K1	6				4		37243-323-700	0312769
21	RUBBER, METER SETTING	K	K1	6				4		37244-307-670	0196212
22	PLATE, TACHOMETER UNDER	K	K1	6				1		37246-323-700	0312777
23	CABLE ASSY., TACHOMETER	K	K1	--	6	1236357		1		37260-300-000	0191601
								1		37260-300-000	0191601
	CABLE ASSY., TACHOMETER	K	K1	--	6	1236357		1		37260-449-840	1097609
								1		37260-449-840	1097609
	CABLE ASSY., TACHOMETER	--	6			1236358		1		37260-149-000	1231877
	CABLE ASSY., TACHOMETER	--	6			1236358		1		37260-390-000	0402735
24	CABLE ASSY., TACHOMETER	K	K1	--	6	1236357		1		37260-300-000	0191601
								1		37260-300-000	0191601
	CABLE ASSY., TACHOMETER	K	K1	--	6	1236357		1		37260-449-840	1097609
								1		37260-449-840	1097609
	CABLE, TACHOMETER INNER	K	K1	--	6	1236357		1		37261-300-000	0312785
								1		37261-300-000	0312785
25	CABLE ASSY., SPEEDOMETER	K	K1	6		1222924		1		44830-323-000	0255570
								1		44830-323-000	0255570
	CABLE ASSY., SPEEDOMETER	K	K1	6		1222924		1		44830-346-000	0270355
								1		44830-346-000	0270355
	CABLE ASSY., SPEEDOMETER	K	K1	6		1222924		1		44830-425-870	0757674
								1		44830-425-870	0757674
	CABLE ASSY., SPEEDOMETER	--	6			1222924		1		44830-390-000	0402784
								1		44830-390-000	0402784
26	CABLE ASSY., SPEEDOMETER	K	K1	6				1		44830-323-000	0255570
	CABLE ASSY., SPEEDOMETER	K	K1	6				1		44830-329-000	0281774
	CABLE ASSY., SPEEDOMETER	K	K1	6				1		44830-346-000	0270355
	CABLE ASSY., SPEEDOMETER	K	K1	6				1		44830-369-000	0364877
	CABLE COMP., SPEEDOMETER	K	K1	6				1		44830-375-000	0383992
	CABLE ASSY., SPEEDOMETER	K	K1	6				1		44830-390-000	0402784
	CABLE ASSY., SPEEDOMETER	K	K1	6				1		44830-413-000	0495127
	CABLE ASSY., SPEEDOMETER	K	K1	6				1		44830-413-010	1068865
	CABLE ASSY., SPEEDOMETER	K	K1	6				1		44830-415-000	0469473
	CABLE ASSY., SPEEDOMETER	K	K1	6				1		44830-425-870	0757674

CONTENTS

TITLE	PAGE	GRID
AIR CLEANER	76	E3
ALTERNATOR	24	B12
BOLT	48	C12
BRAKE MASTER FR	132	D6
CABLE	50	D1
CAMSHAFT	10	B5
CARBURETOR	44	C10
CLUTCH	16	B8
CRANKCASE	40	C8
CRANKCASE COVER	16	B8
CRANKSHAFT	10	B5
CYLINDER	2	B1
CYLINDER	132	G6
EXHAUST MUFFLER	90	E9
FENDER FR	62	D7
FRAME	116	F11
FUEL TANK	18	E3
HANDLEBAR	50	D1
HEAD	2	B1
HEADLIGHT	56	D4
KICK STARTER SPINDLE	30	C3
OIL FILTER	40	C8
OIL PUMP	24	B12
SHOCK ABSORBER FR	95	F1
SPEEDOMETER	56	D4
STEERING STEM	62	D7
STEP	90	E9
SWINGARM	96	F1
TACHOMETER	56	D4
TAILLIGHT K	106	F5
TAILLIGHT K1-76	112	F8
TRANSMISSION	36	C3
TURN SIGNAL K	106	F5
TURN SIGNAL K1-76	112	F8
WASHER (CRANKCASE)	48	C12
WHEEL FR	70	D11
WHEEL RR	70	D11
WIRE HARNESS	118	F11

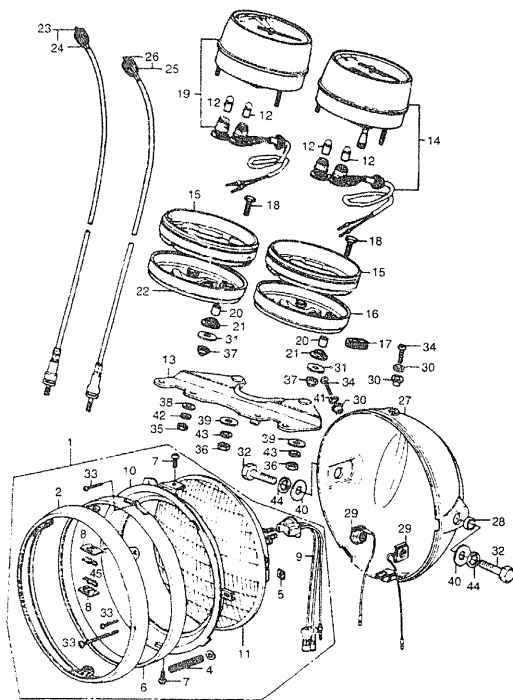
GRID

D5

CB550 ENGINE NO.; CB550E-1000001 TO SUBSEQUENT
CB550 FRAME NO.; CB550K-1000001 TO SUBSEQUENT
CB550K1 ENGINE NO.; CB550E-1029182 TO SUBSEQUENT
CB550K1 FRAME NO.; CB550K-1200001 TO SUBSEQUENT

AMERICAN HONDA MOTOR CO. LTD. 1994 58

HEADLIGHT • SPEEDOMETER • TACHOMETER



F13374002

K = CB550
K1 = CB550K1
6 = CB550K76

Ref. No.	BLOCK NO. DESCRIPTION	F-2	CB550			FRAME SERIAL NUMBER		QTY REQ	PART NUMBER	HONDA CODE
			K	K1	6	FROM	TO			
26	CABLE ASSY., SPEEDOMETER		K	K1	6	-----	-----	1	44830-446-000	0766972
	CABLE ASSY., SPEEDOMETER		K	K1	6	-----	-----	1	44830-463-000	0912220
	CABLE, SPEEDOMETER INNER		K	K1	6	-----	-----	1	44831-323-000	0312827
27	CASE, HEADLIGHT		K	K1	6	-----	-----	1	61301-300-0108	0258152
	CASE, HEADLIGHT		K	K1	6	-----	-----	1	61301-300-0208	0458570
28	COLLAR, HEADLIGHT CASE		K	K1	6	-----	-----	2	61302-300-000	0191734
29	WASHER, HEADLIGHT CASE		K	K1	6	-----	-----	2	61303-336-000	0268367
30	COLLAR, HEADLIGHT SETTING		K	K1	6	-----	-----	3	61304-292-000	0111514
31	WASHER, 6.5X18		K	K1	6	-----	-----	4	90545-323-700	0313163
32	BOLT, HEX., 10X25		K	K1	6	-----	-----	2	92000-10025-08	0166595
	BOLT, HEX., 10X25		K	K1	6	-----	-----	2	92101-10025-08	4544870
33	SCREW, 3X12		K	K1	6	-----	-----	2	93500-03012-38	0362921
34	SCREW, PAN, 5X16		K	K1	6	-----	-----	3	93500-05016-08	0192914
35	NUT, HEX., 6MM		K	K1	6	-----	-----	4	94001-06070	0313247
	NUT, HEX., 6MM		K	K1	6	-----	-----	4	94001-06070-05	0811059
36	NUT, HEX., 8MM		K	K1	6	-----	-----	2	94001-08000-05	0167338
37	NUT, CAP, 6MM		K	K1	6	-----	-----	4	94021-06020	0057893
38	WASHER, PLAIN, 6MM		K	K1	6	-----	-----	4	94101-06700	0294231
39	WASHER, PLAIN, 8MM		K	K1	6	-----	-----	4	94101-08200	0059105
40	WASHER, PLAIN, 10MM		K	K1	6	-----	-----	2	94101-10200	0059121
41	WASHER, SPRING, 5MM		K	K1	6	-----	-----	3	94111-05000	0058966
42	WASHER, SPRING, 6MM		K	K1	6	-----	-----	4	94111-06700	0294249
43	WASHER, SPRING, 8MM		K	K1	6	-----	-----	4	94111-08000	0058982
44	WASHER, SPRING, 8MM		K	K1	6	-----	-----	2	94111-10000	0059006
45	PIN, LOCK, 5MM		K	K1	6	-----	-----	2	94251-05000	0119305

CONTENTS

TITLE	PAGE	GRID
AIR CLEANER	76	F3
ALTERNATOR	24	B12
BOLT	48	C12
BRAKE MASTER FR.	139	G6
CABLE	50	D1
CAMSHAFT	10	B5
CARBURETOR	44	C10
CLUTCH	16	B8
CRANKCASE	40	C8
CRANKCASE COVER	16	B8
CRANKSHAFT	10	B5
CYLINDER	2	B1
CYLINDER	132	G6
EXHAUST MUFFLER	96	E9
FENDER FR.	62	D7
FRAME	118	F11
FUEL TANK	78	E3
HANDLEBAR	50	D1
HEAD	2	B1
HEADLIGHT	56	D4
KICK STARTER SPINDLE	30	C3
OIL FILTER	40	C8
OIL PUMP	24	B12
SHOCK ABSORBER FR.	93	F1
SPEEDOMETER	56	D4
STEERING STEM	62	D7
STEP	90	E9
SWINGARM	58	F1
TACHOMETER	56	D4
TAILLIGHT K	106	F5
TAILLIGHT K1-76	112	F8
TRANSMISSION	30	C3
TURN SIGNAL K	106	F5
TURN SIGNAL K1-76	112	F8
WASHER (CRANKCASE)	48	C12
WHEEL FR.	70	D11
WIRE HARNESS	118	F11

AMERICAN HONDA MOTOR CO., LTD. 1994

CB550 ENGINE NO.; CB550E-1000001 TO SUBSEQUENT
CB550 FRAME NO.; CB550K-1000001 TO SUBSEQUENT
CB550K1 ENGINE NO.; CB550E-1129182 TO SUBSEQUENT
CB550K1 FRAME NO.; CB550K-1200001 TO SUBSEQUENT

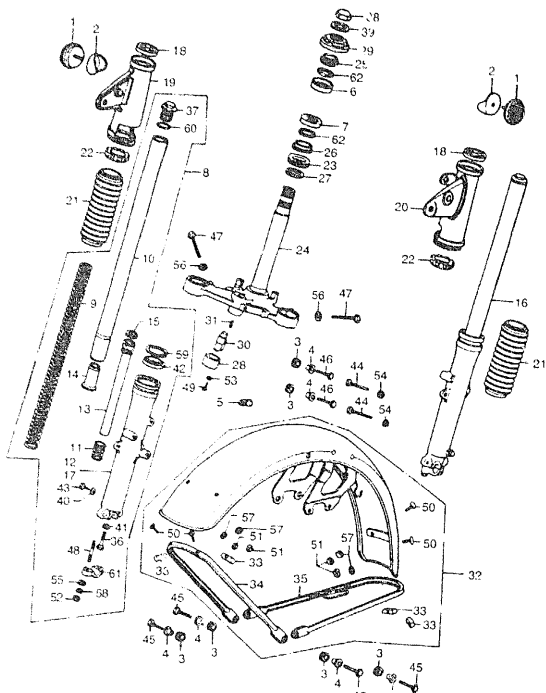
CB550K76 ENGINE NO.; CB550E-1067334 TO SUBSEQUENT
CB550K76 FRAME NO.; CB550K-1230001 TO SUBSEQUENT

AMERICAN HONDA MOTOR CO., LTD. 1994 61

GRID

D6

STEERING STEM • FRONT FENDER



F13374003

K = CB550
K1 = CB550K1
6 = CB550K76

Ref No	BLOCK NO DESCRIPTION	F-3	K			FRAME SERIAL NUMBER FROM TO	QTY REQ	PART NUMBER	HONDA CODE
			K	K1	6				
1	REFLECTOR, FR. REFLEX		K	K1	6	-----	2	33741-340-670	0265454
2	BASE, FR. REFLEX REFLECTOR		K	K1	6	-----	2	33743-341-670	0265615
3	RUBBER, CHAIN CASE SETTING		K	K1	6	-----	6	40513-310-000	0113324
4	COLLAR, CHAIN CASE		K	K1	6	-----	6	40514-310-000	0113332
5	GROMMET, CABLE		K	K1	6	-----	1	45451-283-000	0133272
6	RACE, STEERING UPPER BALL		K	K1	6	-----	1	50301-268-000	0101121
7	RACE, STEERING UPPER BALL		K	K1	6	-----	1	50301-268-010	1977669
8	RACE, STEERING UPPER BALL		K	K1	6	-----	1	50301-268-305	0043252
9	RACE, STEERING LOWER BALL		K	K1	6	-----	1	50302-268-000	0101147
10	RACE, STEERING LOWER BALL		K	K1	6	-----	1	50302-268-010	1977081
11	RACE, STEERING LOWER BALL		K	K1	6	-----	1	50302-268-305	0043257
12	FORK ASSY., R. FR.		K	K1	6	-----	1	14400-374-003	0362673
13	FORK ASSY., R. FR.		K	K1	6	-----	1	14400-374-003	0362673
14	FORK ASSY., R. FR.		K	K1	6	-----	1	14400-374-013	0414326
15	FORK ASSY., R. FR.		K	K1	6	-----	1	14400-374-013	0414326
16	PIPE, FR. FORK		K	K1	6	-----	2	14401-374-003	0362681
17	PIPE, FR. FORK		K	K1	6	-----	2	14410-374-003	0362699
18	PIPE, FR. FORK REBOUND		K	K1	6	-----	2	14412-340-000	0265587
19	CASE, R. FORK BOTTOM		K	K1	6	-----	1	15421-341-701	0315077
20	PIPE COMP., BOTTOM		K	K1	6	-----	2	15430-374-003	0362707
21	PIECE, OIL LOCK		K	K1	6	-----	2	15432-340-000	0265595
22	PIECE, OIL LOCK		K	K1	6	-----	2	15432-357-000	0321455
23	RING, PISTON		K	K1	6	-----	2	15437-329-010	0293456
24	FORK ASSY., L. FR.		K	K1	6	-----	1	15500-374-013	0416750
25	CASE, L. FR. FORK LOWER		K	K1	6	-----	1	15521-341-701	0315101
26	RUBBER, FR. FORK UPPER COVER		K	K1	6	-----	2	15601-323-000	0255091
27	COVER, R. FR. FORK UPPER		K	K1	6	-----	1	15602-374-000	0362723
28	COVER, L. FR. FORK UPPER		K	K1	6	-----	1	15606-374-000	0362731
29	BOOT, FR. SHOCK		K	K1	6	-----	2	15611-300-000	0194985
30	RUBBER B, FR. FORK COVER		K	K1	6	-----	2	15622-323-000	025125
31	DUST SEAL, STEERING HEAD		K	K1	6	-----	1	53124-250-000	0066045
32	DUST SEAL, STEERING HEAD		K	K1	6	-----	1	53124-250-000	0367482
33	STEM COMP., STEERING		K	K1	6	-----	1	53200-327-0206	0278622

CONTENTS

TITLE	PAGE	GRID
AB CLEANER	76	E3
AL TREATING	24	F12
BRK	48	C12
BRK MASTER FR	152	G1
CABLE	50	D1
CRANKCASE	19	B5
CRANKCASE COVER	45	C10
CLUTCH	16	B8
CRANKCASE	45	C8
CRANKCASE COVER	45	C8
CRANKSHAFT	19	B5
CYLINDER	2	B1
CYLINDER	152	G1
EXHAUST MUFFLER	91	F4
FENDER FR	42	D7
FRAME	116	F11
FUEL TANK	75	E1
HEADLIGHT	50	D1
HEAD	2	B1
HEADLIGHT	56	D4
KICK STARTER SPINDLE	30	C3
OIL FILTER	40	C6
OIL PUMP	24	B12
SHOCK ABSORBER FR	56	F1
SPEEDOMETER	56	D4
STEERING STEM	62	D7
SWEEP	90	E9
SWINGARM	56	F1
TACHOMETER	56	D4
TAILLIGHT R	108	F5
TAILLIGHT R1 76	112	F8
TRANSMISSION	30	C3
TURN SIGNAL R	106	F5
TURN SIGNAL R1 76	112	F8
WASHER (CRANKCASE)	48	C12
WHEEL FR	70	D11
WHEEL FR	70	D11
WIRE HARNESS	116	F11

AMERICAN HONDA MOTOR CO., LTD. 1984

CB550 ENGINE NO.; CB550E-1000001 TO SUBSEQUENT
CB550 FRAME NO.; CB550K-1000001 TO SUBSEQUENT
CB550K1 ENGINE NO.; CB550E-1029182 TO SUBSEQUENT
CB550K1 FRAME NO.; CB550K-1200001 TO SUBSEQUENT

CB550K76 ENGINE NO.; CB550E-1067334 TO SUBSEQUENT
CB550K76 FRAME NO.; CB550K-1230001 TO SUBSEQUENT

AMERICAN HONDA MOTOR CO., LTD. 1984

GRID

D7

K = CB550
K_i = CB550K1
6 = CB550K176



64 • AMERICAN HONDA MOTOR CO., LTD. 1994

CB550 ENGINE NO.; CB550E-1000001 TO SUBSEQUENT
CB550 FRAME NO.; CB550K-1000001 TO SUBSEQUENT
CB550K1 ENGINE NO.; CB550E-1029182 TO SUBSEQUENT
CB550K1 FRAME NO.; CB550K-1200001 TO SUBSEQUENT

CB550K'76 ENGINE NO.; CB550E-1067334 TO SUBSEQUENT
CB550K'76 FRAME NO.; CB550K-1230001 TO SUBSEQUENT

58

K = CB550 K1 = CB550K1 6 = CB550K76			CB550	CB500K	FRAME SERIAL NUMBER		QTY REQ	PART NUMBER	HONDA CODE
Ref No.	BLOCK NO. DESCRIPTION	F-3	K K1	7 6	FROM	TO			
25	RACE, STEERING UPPER CONE		K K1	6	-----	-----	1	53211-268-000	0102251
	RACE, STEERING UPPER CONE		K K1	6	-----	-----	1	53211-268-010	1977677
	RACE, STEERING UPPER CONE		K K1	6	-----	-----	1	53211-268-305	0045997
26	RACE, STEERING LOWER CONE		K K1	6	-----	-----	1	53212-250-000	0102269
	RACE, STEERING LOWER CONE		K K1	6	-----	-----	1	53212-250-010	1977131
	RACE, STEERING LOWER CONE		K K1	6	-----	-----	1	53212-250-305	0046003
27	WASHER, STEERING HEAD DUST SEAL ..		K K1	6	-----	-----	1	53215-250-000	0046052
28	COVER COMP., HANDLEBAR LOCK CASE ..		K K1	6	-----	-----	1	53215-317-000	0238394
29	THREAD COMP., STEERING HEAD UPPER		K K1	6	-----	-----	1	53220-286-000	0154708
30	LOCK COMP., HANDLEBAR		K K1	6	-----	-----	1	35010-230-010	0136168
	LOCK COMP., HANDLEBAR (TOYD)		K K1	6	-----	-----	1	53600-230-000	0137844
31	SPRING, HANDLEBAR LOCK		K K1	6	-----	-----	1	53631-268-020	0045971
32	FENDER COMP., FR.		K K1	6	-----	-----	1	61100-341-700XW	0315176
33	PIECE, FENDER MOUNT		K K1	6	-----	-----	4	61102-300-000	0195081
34	STAY A, FR. FENDER		K K1	6	-----	-----	1	61111-341-700	0315184
35	STAY B, FR. FENDER		K K1	6	-----	-----	1	61112-341-700	0315192
36	BOLT, SOCKET, 8MM		K K1	6	-----	-----	2	90116-283-010	0254169
	BOLT, SOCKET, 8MM (SHOWA)		K K1	6	-----	-----	2	90116-383-721	0750919
37	BOLT, FR. FORK		K K1	6	-----	-----	2	90123-300-000	0194992
38	NUT, STEERING STEM		K K1	6	-----	-----	1	90304-233-670	0254185
	NUT, STEERING STEM		K K1	6	-----	-----	1	95020-11300	031 60
39	WASHER, STEERING STEM		K K1	6	-----	-----	1	90503-283-000	0078257
40	GASKET, FR. FORK DRAIN VALVE		K K1	6	-----	-----	2	90543-273-000	0052209
41	WASHER, SPECIAL, 8MM		K K1	6	-----	-----	2	90544-283-000	0259457
42	OIL SEAL, 35X48X11		K --	--	-----	-----	2	91255-300-025	0240853
	OIL SEAL, 35X48X11		-- K1	--	1221024	-----	2	91255-300-025	0240853
	OIL SEAL, 35X48X11		K K1	6	-----	-----	2	91255-KBH-003	4154134
	OIL SEAL, 35X48X11		-- K1	--	1221024	-----	2	91255-KBH-003	4154134
	OIL SEAL, 35X48X11		K K1	6	-----	-----	2	91255-MAG-013	5323867
	OIL SEAL, 35X48X11		-- K1	--	1221024	-----	2	91255-MAG-013	5323867
	OIL SEAL, 35X48X11		K K1	6	-----	-----	2	91255-300-033	0391359
	OIL SEAL, 35X48X11		-- K1	--	1221024	-----	2	91255-300-033	0391359
	OIL SEAL, 35X48X11		K K1	6	-----	-----	2	91255-323-013	0254227
	OIL SEAL, 35X48X11		-- K1	--	1221024	-----	2	91255-323-013	0254227

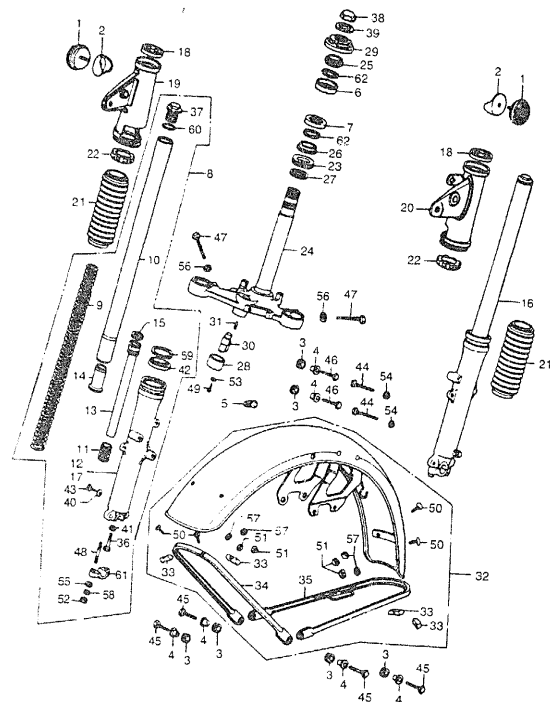
© AMERICAN HONDA MOTOR CO., LTD. 1984

TITLE	PAGE	GRID
AIR CLEANER	76	E3
ALTERNATOR	42	B12
BOLT	48	C12
BRAKE MASTER F/L	12	C3
CABLE	50	D1
CAMSHAFT	10	D6
CARBURETOR	44	D10
CLU/F/H	16	E5
CRANKCASE	40	C8
CRANKCASE COVER	16	B5
CRANK P/B	10	B8
CYLINDER	2	E1
CYLINDER	12	G6
EXHAUST MUFFLER	90	E9
FENDER F/R	62	D7
FRAME	11	F11
FUEL TANK	75	E3
HANDLEBAR	50	D4
HEAD	2	B1
HEADLIGHT	55	D4
KICK STARTER SPINDLE	30	C3
OIL FILTER	40	C8
OIL PUMP	24	B12
SPRINKLE ASSURER RR	56	D4
SPEEDOMETER	56	D4
STEERING STEM	62	E9
STEP	30	D7
SWINGARM	98	F1
TACHOMETER	56	D4
TAILLIGHT K	106	F5
TAILLIGHT K17-76	112	F8
TRANSMISSION	48	C12
TURN SIGNAL K	106	F5
TURN SIGNAL K17-76	112	F8
WASHER (CRANKCASE)	48	C12
WHEEL RR	70	F11
WHEEL RR	10	D1
WIRE HARNESS	118	F11

GRID

D8

STEERING STEM • FRONT FENDER



F13374003

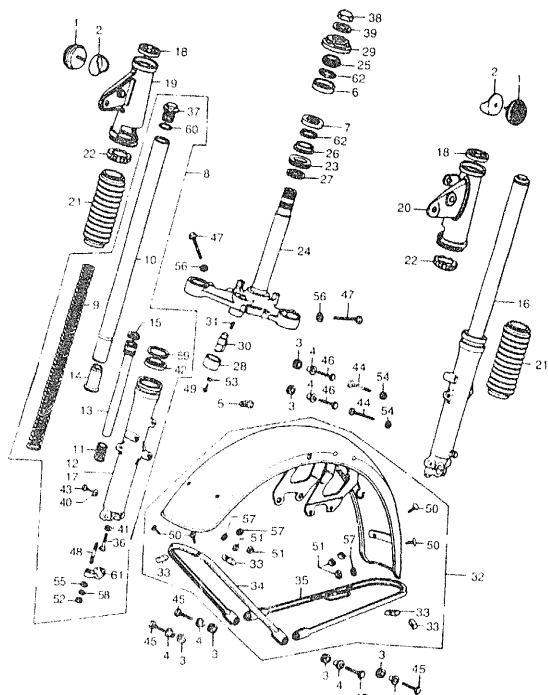
K = CB550
K1 = CB550K1
6 = CB550K76

K = CB550 K1 = CB550K1 6 = CB550K78			CB550	CB550K1							
				K	7		FRAME				
				K	1		SERIAL NUMBER				
				K	1	6	FROM	TO			
Ref	BLOCK NO.	F-3							QTY		
No.	DESCRIPTION		K	K1	6				REQ	PART NUMBER	HONDA CODE
42	OIL SEAL, 35X48X11		K	K1	6	-----	-----	-----	2	91255-434-003	0711515
			--	K1	--	-----	1221024	-----	2	91255-434-003	0711515
	OIL SEAL, 35X48X11		K	K1	6	-----	-----	-----	2	91255-434-013	0918425
			--	K1	--	-----	1221024	-----	2	91255-434-013	0918425
43	BOLT, HEX., 5X10		K	K1	6	-----	-----	-----	2	92000-06010	0054171
	BOLT, HEX., 6X10		K	K1	6	-----	-----	-----	2	92101-06010-0A	3307048
44	BOLT, HEX., 6X16		K	K1	6	-----	-----	-----	2	92000-06016	0654239
	BOLT, HEX., 6X16		K	K1	6	-----	-----	-----	2	92000-06016-0A	0313197
	BOLT, HEX., 6X16		K	K1	6	-----	-----	-----	2	92000-06016-1A	0915124
	BOLT, HEX., 6X16		K	K1	6	-----	-----	-----	2	92100-06016-0A	1685726
	BOLT, HEX., 6X16		K	K1	6	-----	-----	-----	2	92101-06016-0A	2479590
	BOLT, HEX., 6X16		K	K1	6	-----	-----	-----	2	92200-06016-0A	18-2400
45	BOLT, HEX., 6X20		K	K1	6	-----	-----	-----	4	92000-06020	0054270
	BOLT, HEX., 6X20		K	K1	6	-----	-----	-----	4	92101-06020-0A	2528925
46	BOLT, HEX., 6X25		K	K1	6	-----	-----	-----	2	92000-06025	0054320
	BOLT, HEX., 6X25		K	K1	6	-----	-----	-----	2	92101-06025-0A	2206563
47	BOLT, HEX., 10X35		K	K1	6	-----	-----	-----	2	92000-10035-0A	0255356
			--	K1	--	-----	1243097	-----	2	92000-10035-0A	0255356
	BOLT, FLANGE		--	K1	--	-----	1243098	-----	2	95700-10035	0368654
	BOLT, FLANGE, 10X35		--	K1	--	-----	1243098	-----	2	95700-10035-00	0487033
	BOLT, FLANGE, 10X35		--	K1	--	-----	1243098	-----	2	95701-10035-00	3454147
48	BOLT, STUD, 8X50		K	K1	6	-----	-----	-----	4	92700-08050-3B	0476966
	BOLT, STUD, 8X50		K	K1	6	-----	-----	-----	4	92700-08050-30	0256383
	BOLT, STUD, 8X50		K	K1	6	-----	-----	-----	4	92900-08028-3B	2892685
49	SCREW, PAN, 3X8		K	K1	6	-----	-----	-----	1	93500-02008-0A	0198176
50	SCREW, OVAL, 5X20		K	K1	6	-----	-----	-----	4	93700-05020-0B	0156497
51	NUT, HEX., 5MM		K	K1	6	-----	-----	-----	4	94010-05010-0S	0156885
52	NUT, HEX., 8MM		K	K1	6	-----	-----	-----	4	94010-08000	0114686
53	WASHER, PLAIN, 3MM		K	K1	6	-----	-----	-----	1	94101-03000	0059030
54	WASHER, PLAIN, 6MM		K	K1	6	-----	-----	-----	2	94101-06000	0059071
	WASHER, PLAIN, 6MM		K	K1	6	-----	-----	-----	2	94101-06080	3136074
	WASHER, PLAIN, 6MM		K	K1	6	-----	-----	-----	2	94101-06800	0345900
55	WASHER, PLAIN, 8MM		K	K1	6	-----	-----	-----	4	94010-08000	0059097

CONTENTS

TITLE	PAGE	GRID
AIR CLEANER	78	E3
ALTERNATOR	24	B12
BOLT	48	C12
BRAKE MASTER, FR.	132	G6
CABLE	50	D1
CAMSHAFT	10	B5
CARBURETOR	44	C10
CLUTCH	16	B8
CRANKCASE	40	C8
CRANKCASE COVER	16	B8
CRANKSHAFT	10	B5
CYLINDER	2	B1
CYLINDER	132	G6
EXHAUST MUFFLER	90	E9
FENDER, FR.	62	D7
FRAME	118	F11
FUEL TANK	78	E3
HANDLEBAR	50	D1
HEAD	2	B1
HEADLIGHT	56	D4
KICK STARTER SPINDLE	30	C3
OIL FILTER	40	C6
OIL PUMP	24	B12
SHOCK ABSORBER, FR.	98	F1
SPEEDOMETER	56	D4
STEERING STEM	62	D7
STEP	90	E9
SWINGARM	98	F1
TACHOMETER	56	D4
TAILLIGHT K	106	F5
TAILLIGHT K1-76	112	F8
TRANSMISSION	30	C3
TURN SIGNAL K	106	F5
TURN SIGNAL K1-76	112	F8
WASHER (CRANKCASE)	48	C12
WHEEL, FR.	70	D11
WHEEL, FR.	70	D11
WIRE HARNESS	118	F11

STEERING STEM • FRONT FENDER



P 333-20001

K ~ CB550
K1 ~ CB550K1
6 ~ CB550K76

Part No.	BLOCK NO. DESCRIPTION	F-3	K	K1	6	FRAME SERIAL NUMBER		QTY REQ	PART NUMBER	HONDA CODE
						FROM	TO			
56	WASHER, PLAIN, 10MM		K	K1	6	-----	-----	2	94102-10000	0172551
					6	-----	1243097	2	94102-10000	0172551
57	WASHER, SPRING, 5MM		K	K1	6	-----	-----	4	94111-05000	0058966
58	WASHER, SPRING, 8MM		K	K1	6	-----	-----	4	94111-08000	0058982
59	CIRCLIP, INTERNAL, 48MM		K	K1	6	-----	-----	2	94521-48000	0255349
60	O-RING, 23X2.8		K	K1	6	-----	-----	2	94608-50000	0255588
61	HOLDER 1C, FR. FORK AXLE		K	K1	6	-----	-----	2	95014-41000	0255653
62	BALL, STEEL, #8 (1/4)		K	K1	6	-----	-----	37	96211-08000	0079905

CONTENTS

TITLE	PAGE	GRID
ANTI-CLEANER	76	E3
ALTERNATOR	28	H12
BOIL	48	C12
BRAKE MASTER FH	130	G6
CABLE	50	D1
CAMSHAFT	10	E5
CAMBURTOR	44	C10
CLUTCH	16	B8
CRANKCASE	46	C8
CRANKCASE COVER	16	B8
CRANKSHAFT	10	E5
CYLINDER	2	B1
CYLINDER	137	G6
EXHAUST MUFFLER	90	E9
FENDER FH	62	D7
FRAME	138	F11
FUEL TANK	70	E3
HAND FISH	56	D1
HEAD	2	B1
HEADLIGHT	56	D3
KICK STARTER SPINDLE	30	C3
OIL FILTER	40	C8
OIL PUMP	24	H12
SHOCK ABSORBER FH	98	F1
SPEEDOMETER	56	D3
STEERING STEM	62	D7
STEP	90	E9
SWINGARM	98	F1
TACHOMETER	56	D3
TAILLIGHT K	106	E5
TAILLIGHT K1 76	112	F8
TRANSMISSION	20	C3
TURN SIGNAL K	106	F5
TURN SIGNAL K1 76	112	F8
WASHER (CRANKCASE)	48	C12
WHEEL FH	70	D11
WIRE HARNESS	118	F11

(GRID)

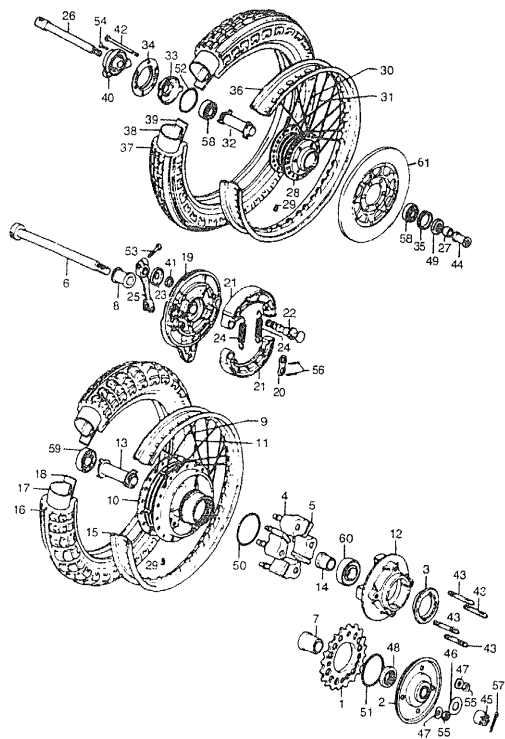
D10

CB550 ENGINE NO.; CB550E-1000001 TO SUBSEQUENT
CB550 FRAME NO.; CB550K-1000001 TO SUBSEQUENT
CB550K1 ENGINE NO.; CB550E-1029182 TO SUBSEQUENT
CB550K1 FRAME NO.; CB550K-1200001 TO SUBSEQUENT

CB550K76 ENGINE NO.; CB550F-1067334 TO SUBSEQUENT
CB550K76 FRAME NO.; CB550K-1230001 TO SUBSEQUENT

© AMERICAN HONDA MOTOR CO., LTD. 1984

FRONT WHEEL • REAR WHEEL



F13374004

K = CB550
K1 = CB550K1
6 = CB550K76

Ref. No.	BLOCK NO. DESCRIPTION	F-4	K	K1	6	FRAME SERIAL NUMBER FROM TO	QTY	PART NUMBER	HONDA CODE
1	SPROCKET, FINAL DRIVEN (37T)	K	K1	6	---	---	1	41201-374-000	0762574
2	PLATE, SPROCKET SIDE	K	K1	6	---	---	1	41211-323-000	0257824
3	RETAINER, RR. WHEEL BEARING	K	K1	6	---	---	1	41231-323-020	0257832
4	DAMPER A, RR.	K	K1	6	---	---	4	41242-323-000	0257857
5	DAMPER B, RR.	K	K1	6	---	---	4	41243-323-000	0257840
6	AXLE, RR. WHEEL	K	K1	6	---	---	1	42301-300-010	0237339
7	COLLAR, RR. WHEEL SIDE	K	K1	6	---	---	1	42301-300-020	0468942
8	COLLAR, RR. BRAKE PANEL SIDE	K	K1	6	---	---	1	42311-323-040	0257865
9	SPOKE A, RR.	K	K1	6	---	---	20	42313-323-010	0257873
10	HUB COMP., RR. WHEEL	K	K1	6	---	---	1	42601-283-000	0078386
11	SPOKE B, RR.	K	K1	6	---	---	20	42601-323-030	0257881
12	FLANGE, FINAL DRIVEN	K	K1	6	---	---	20	42604-283-000	0078394
13	COLLAR, RR. AXLE DISTANCE	K	K1	6	---	---	1	42610-323-000	0255547
14	COLLAR B, RR. AXLE DISTANCE	K	K1	6	---	---	1	42620-323-030	0257899
15	RIM, RR. WHEEL (18) (DAIDO)	K	K1	6	---	---	1	42625-283-000	0078436
16	RIM, RR. WHEEL (18) (DAIDO)	K	K1	6	---	---	1	42701-283-003	0078352
17	TIRE, RR. WHEEL	K	K1	---	---	---	1	42701-404-771	0700468
18	TIRE, RR. (3.75S-18) (BS)	K	K1	6	---	---	1	42711-374-003	0362582
19	TIRE, RR. (3.75S-18) (BS)	K	K1	6	---	---	1	42711-375-671	0415943
20	TUBE, TIRE (INDUE) (100/100-18)	K	K1	6	---	---	1	08400-34001	0722611
21	TUBE, TIRE (INDUE) (100/100-18)	K	K1	6	---	---	1	08400-34001	0722611
22	TUBE, TIRE (4.00-18) (NITTO)	K	K1	6	---	---	1	42712-K11-671	2305407
23	TUBE, TIRE (4.00-18) (NITTO)	K	K1	6	---	---	1	42712-K11-671	2305407
24	TUBE, TIRE (3.75-18) (BS)	K	K1	6	---	---	1	42712-340-006	0265884
25	TUBE, TIRE (3.75-18) (BS)	K	K1	6	---	---	1	42712-340-006	0265884
26	TUBE, TIRE (4.10-18) (BS)	K	K1	6	---	---	1	42712-374-003	0362590
27	TUBE, TIRE (4.10-18) (BS)	K	K1	6	---	---	1	42712-374-003	0362590
28	TUBE, TIRE (4.00-18) (BS)	K	K1	6	---	---	1	42712-400-003	15613-9
29	TUBE, TIRE (4.00-18) (BS)	K	K1	6	---	---	1	42712-400-003	15613-9
30	TUBE, TIRE (4.00-18) (BS)	K	K1	6	---	---	1	42712-425-003	0824656
31	TUBE, TIRE (4.00-18) (BS)	K	K1	6	---	---	1	42712-425-003	0824656
32	TUBE, TIRE (4.00-18) (BS)	K	K1	6	---	---	1	42712-435-003	0788877
33	TUBE, TIRE (4.00-18) (BS)	K	K1	6	---	---	1	42712-435-003	0788877

CONTENTS

TITLE	PAGE GRID
AIR CLEANER	76 E3
ALTERATOR	24 B12
BOLT	48 C12
BRAKE MASTER FR	132 G6
CABLE	50 D1
CAMSHAFT	10 B5
CARBURETOR	44 C10
CLUTCH	16 B8
CRANKCASE	48 C8
CRANKCASE COVER	16 B8
CRANKSHAFT	10 B5
CYLINDER	2 F1
CYLINDER	132 G6
EXHAUST MUFFLER	90 E9
FENDER FR	62 D7
FRAME	118 F11
FUEL TANK	78 E2
HANDLEBAR	50 D1
HEAD	2 R1
HEADLIGHT	56 D4
KICK STARTER SPINDLE	20 C2
OIL FILTER	40 C4
OIL PUMP	24 B12
SHOCK ABSORBER FR	98 F1
SPEEDOMETER	56 D4
STEERING STEM	62 C7
STEP	90 E9
SWINGARM	98 F1
TACHOMETER	48 D4
TAILLIGHT K	108 F5
TAILLIGHT K1-76	112 F8
TRANSMISSION	30 C3
TURN SIGNAL K	108 F5
TURN SIGNAL K1-76	112 F8
WASHER (CRANKCASE)	48 C12
WHEEL FR	70 D11
WHEEL RR	70 D11
WIRE HARNESS	118 F11

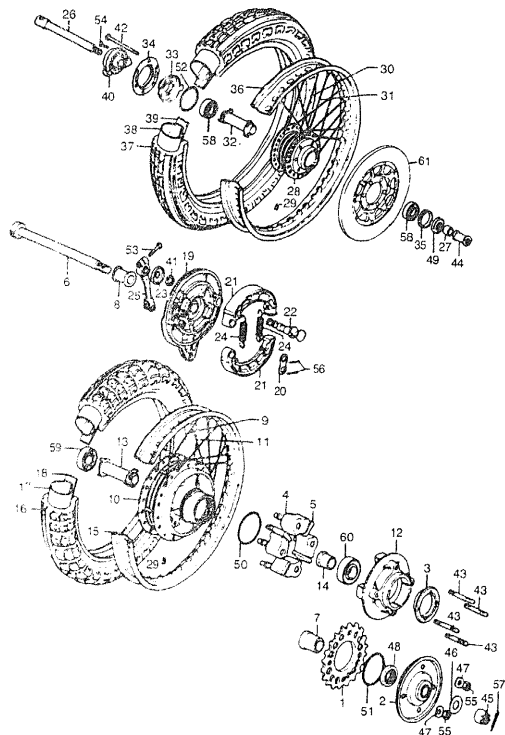
GRID

D11

CB550 ENGINE NO.; CB550E-1000001 TO SUBSEQUENT
CB550 FRAME NO.; CB550K-1000001 TO SUBSEQUENT
CB550K1 ENGINE NO.; CB550E-1029182 TO SUBSEQUENT
CB550K1 FRAME NO.; CB550K-1200001 TO SUBSEQUENT

CB550K76 ENGINE NO.; CB550E-1067334 TO SUBSEQUENT
CB550K76 FRAME NO.; CB550K-1230001 TO SUBSEQUENT

FRONT WHEEL • REAR WHEEL



F13374004

K = CB550
K1 = CB550K1
6 = CB550K76

Ref. No.	BLOCK NO. DESCRIPTION	F-4	K	K1	6	FRAME SERIAL NUMBER FROM TO	QTY REQ	PART NUMBER	HONDA CODE
17	TUBE, TIRE (3.25/3.50-19) (OUNLDF)		K	K1	6	-----	1	44712-300-004	1006477
			--	K1	--	1224933	1	44712-300-004	1006477
	TUBE, TIRE (4.00-18)		--	K1	6	-----	1	42712-300-000	0191296
			--	K1	--	1224933	1	42712-300-000	0191296
	TUBE, TIRE (4.00-18) (BS)		--	K1	6	-----	1	42712-300-003	0434258
			--	K1	--	1224933	1	42712-300-003	0434258
	TUBE, TIRE (4.00-18) (BS)		--	K1	6	-----	1	42712-310-004	0113233
			--	K1	--	1224933	1	42712-310-004	0113233
	TUBE, TIRE (4.00-18) (BS)		--	K1	6	-----	1	42712-312-003	0229351
			--	K1	--	1224933	1	42712-312-003	0229351
18	FLAP, TIRE (18) (BS)		K	K1	6	-----	1	42713-268-003	0049650
19	PANEL COMP., RR. BRAKE		K	K1	6	-----	1	43100-374-000	0362608
20	WASHER, ANCHOR PIN		K	K1	6	-----	1	43102-319-000	0212092
	WASHER, BRAKE ANCHOR PIN		K	K1	6	-----	1	43106-222-300	0033233
21	SHOE COMP., RR. BRAKE (SEE KIT P/N--END OF BLOCK)		K	K1	6	-----	2	43120-283-000	0078584
	SHOE COMP., RR. BRAKE (SEE KIT P/N--END OF BLOCK)		K	K1	6	-----	2	43120-404-003	0466991
	SHOE COMP., RR. BRAKE (SEE KIT P/N--END OF BLOCK)		K	K1	6	-----	2	43120-458-670	0398305
22	CAM, RR. BRAKE		K	K1	6	-----	1	43141-374-000	0362616
23	PLATE, BRAKE INDICATOR		K	K1	6	-----	1	43145-374-000	0362624
24	SPRING, RR. BRAKE SHOE		K	K1	6	-----	2	43151-346-000	0328286
25	ARM, RR. BRAKE		K	K1	6	-----	1	43411-374-000	0362632
26	AXLE, FR. WHEEL		K	K1	6	-----	1	44301-300-000	0194738
	AXLE, FR. WHEEL		K	K1	6	-----	1	44301-393-000	0445817
	AXLE, FR. WHEEL		K	K1	6	-----	1	44301-422-000	0693341
	AXLE, FR. WHEEL		K	K1	6	-----	1	44301-425-870	0757625
27	COLLAR, FR. WHEEL SIDE		K	K1	6	-----	1	44311-300-000	0193102
	COLLAR, FR. WHEEL SIDE		K	K1	6	-----	1	44311-371-980	0455873
28	HUB, FR. WHEEL		K	K1	6	-----	1	44601-300-040	0237347
29	BALANCER, WHEEL (206)		K	K1	6	-----	AR	44606-283-000	0078022
	BALANCER, WHEEL (156)		K	K1	6	-----	AR	44607-283-000	0089292
	BALANCER, WHEEL (106)		K	K1	6	-----	AR	44608-283-000	0093300

CONTENTS

TITLE	PAGE	GRID
AIR CLEANER	78	E3
ALTERNATOR	24	B12
BOLT	48	C12
BRAKE MASTER FR	131	G6
CABLE	50	D1
CRANKSHAFT	10	B5
CARBURETOR	44	C10
CLUTCH	19	B8
CRANKCASE	40	C8
CRANKCASE COVER	16	B4
CRANKSHAFT	10	B5
CYLINDER	2	B1
CYLINDER	130	G6
EXHAUST MUFFLER	90	E9
FENDER FR	62	O7
FRAME	118	F11
FUEL TANK	78	E3
HANDLEBAR	50	D1
HEAD	2	B1
HEADLIGHT	56	D4
KICK STARTER SPINDLE	30	C1
OIL FILTER	40	C8
OIL PUMP	24	B12
SHOCK ABSORBER, RR	98	F1
SPEEDOMETER	56	D4
STEERING STEM	62	O7
STEP	90	E9
SWINGARM	98	F1
TACHOMETER	56	D4
TAILLIGHT K	100	F5
TAILLIGHT K1-76	112	F8
TRANSMISSION	30	C3
TURN SIGNAL K	106	F5
TURN SIGNAL K1-76	112	F8
WASHER (CRANKCASE)	48	C12
WHEEL FR	70	D11
WHEEL RR	70	D11
WIRE HARNESS	118	F11

GRID

D12