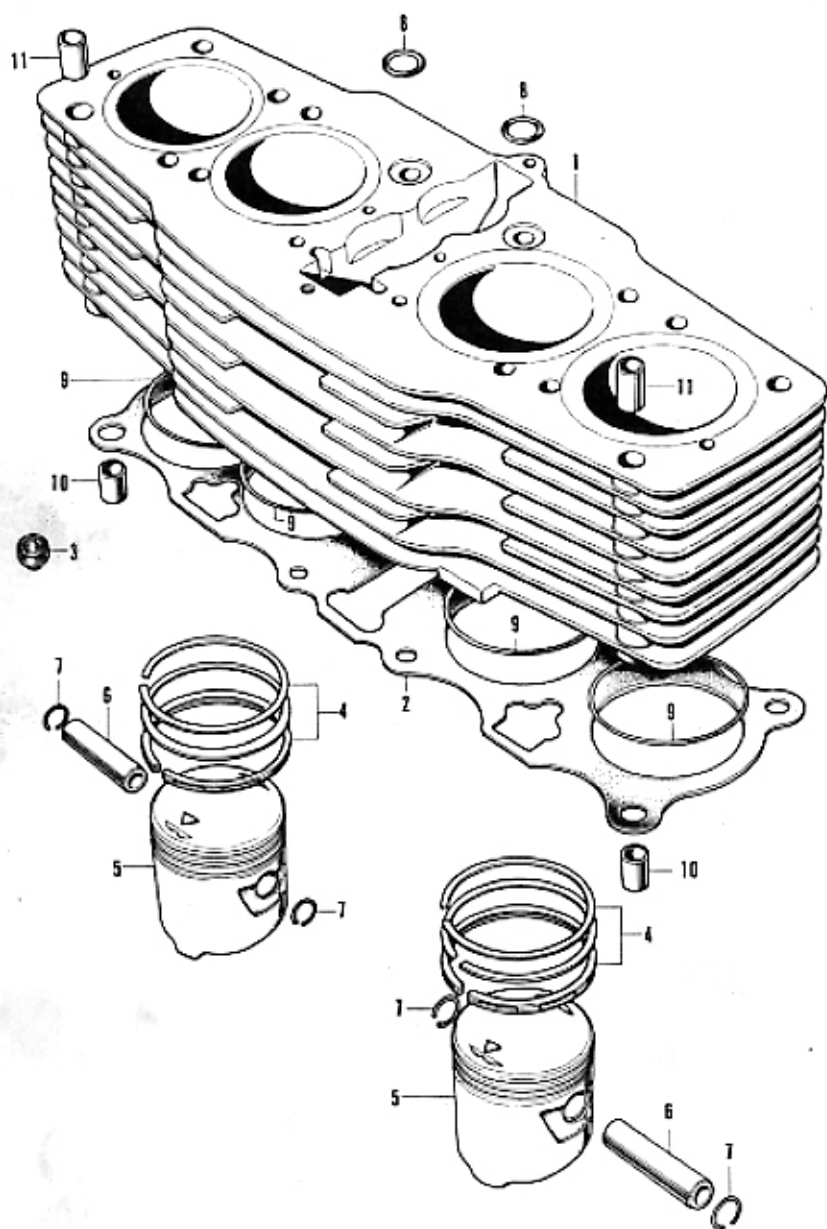


# E-4 Cylinder Head • Insulator

Ref. No.	Part No.	Description	Req. No. CB750	Remarks
16	90485-035-000	WASHER, 14 mm .....	16	
17	91317-500-003	O-RING, 3.7×1.7 (ARAI) .....	4	
18	91318-300-013	RUBBER, sealing (ARAI) .....	6	
19	92000-00036	BOLT, hex, 6×36 .....	1	~1064900
	96700-00036	BOLT, flange, 6×36 .....	1	CB750E-1054903-
20	92000-06090	BOLT, hex, 6×90 .....	1	CB750E-1026144~1064900
	96700-06090	BOLT, flange, 6×90 .....	1	CB750E-1054903-
21	92700-06056	BOLT, stud, 6×56 .....	4	
22	93500-04022	SCREW, pan, 4×22 .....	8	
23	94101-05000	WASHER, plain, 6 mm .....	1	~1064902
24	94301-06140	PIN, dowel, 8×14 .....	6	
25	98009-58711	PLUG, spark (NGK D-8ES) .....	4	
	98009-58721	PLUG, spark (DENSO X-24ES) .....	4	

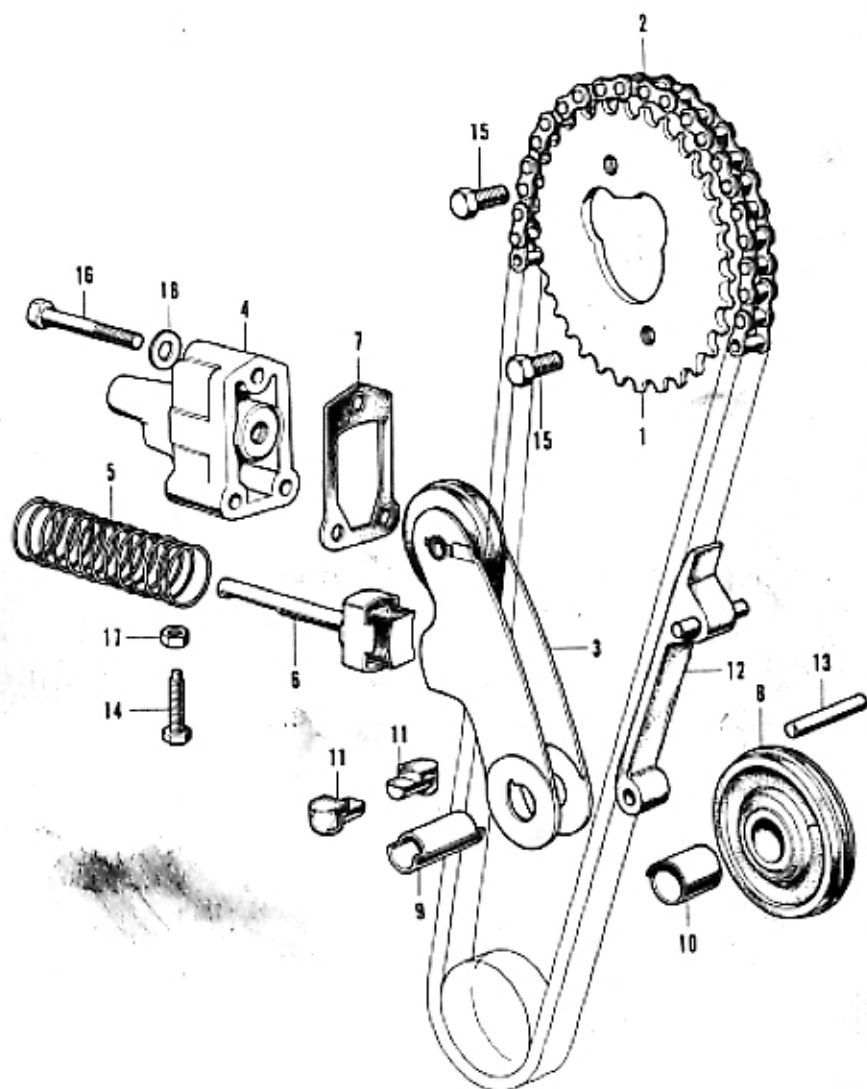
# E-5 Cylinder • Piston



# E-5 Cylinder - Piston

Ref. No.	Part No.	Description	Reqd. No. CB750	Remarks
1	12100-300-020	CYLINDER COMP. ....	1	-1026143
	12100-300-030	CYLINDER COMP. ....	1	CB750E-1C05144~
2	12191-300-020	GASKET, cylinder.....	1	
3	12195-300-000	(Superseded by 12520-256-000)		
	12020-285-000	RUBBER, insert .....	22	-1026143
			21	CB750E-1C05144~
4	13011-300-013	RING-SET, piston (STD.) .....	4	
	13021-300-013	RING-SET, piston (0.25) .....	4	
	13031-300-013	RING-SET, piston (0.50) .....	4	
	13041-300-013	RING-SET, piston (0.75) .....	4	
	13051-300-013	RING-SET, piston (1.00) .....	4	
5	13101-300-020	PISTON (STD.) .....	4	
	13102-300-020	PISTON (0.25) .....	4	
	13103-300-020	PISTON (0.50) .....	4	
	13104-300-020	PISTON (0.75) .....	4	
	13105-300-020	PISTON (1.00) .....	4	
6	13111-300-000	PIN, piston .....	4	
7	13115-250-010	CLIP, piston pin .....	8	
8	91303-035-000	PACKING, rubber, 16 mm .....	2	
9	91304-285-000	O-RING, 61.8 x 2.0 .....	4	
10	94301-12150	PIN, dowel, 12 x 15 .....	2	
11	94301-12220	PIN, dowel, 12 x 22 .....	2	

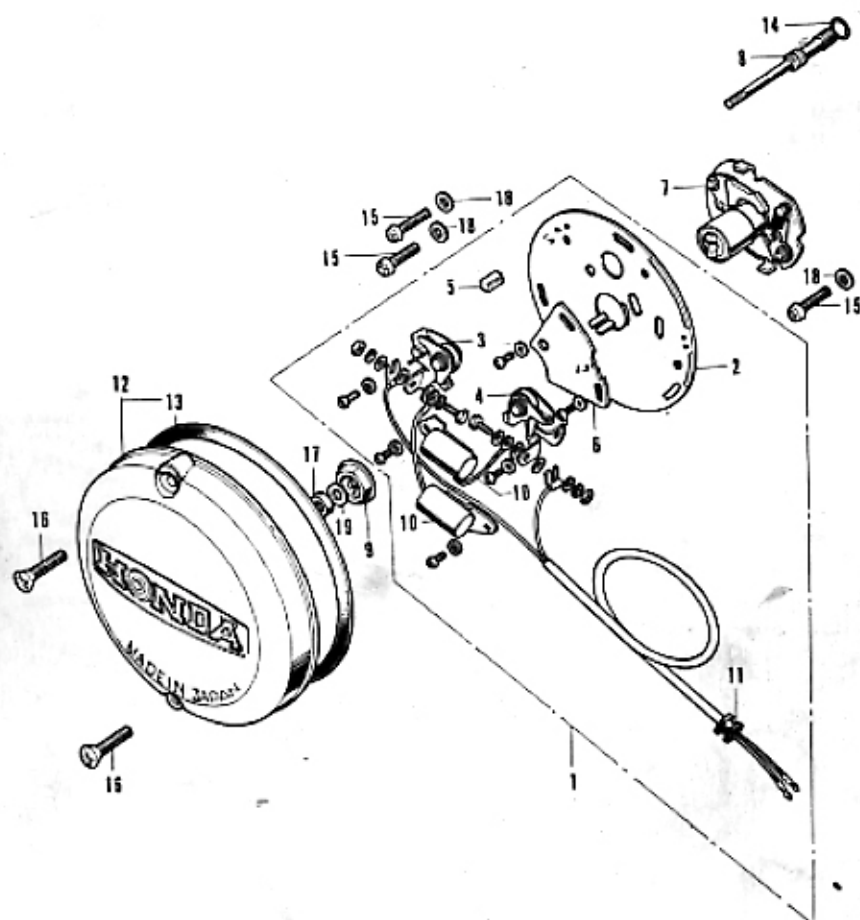
## E-6 Cam Chain - Tensioner



# E-6 Cam Chain - Tensioner

Ref. No.	Part No.	Description	Reqd. No. CB750	Remarks
1	14321-300-010	SPROCKET, cam (34T) .....	1	
2	14501-285-003	CHAIN, cam (DK219T-94L Endless) .....	1	
3	14500-300-000	TENSIONER COMP., cam chain .....	1	
4	14530-300-010	HOLDER COMP., cam chain tensioner .....	1	
5	14541-283-000	SPRING, tensioner .....	1	
6	14550-300-000	BAR COMP., push .....	1	~1044805
	14550-300-000	BAR COMP., push .....	1	CB750E-1044806~
7	14592-300-000	GASKET, tensioner holder .....	1	
8	14601-312-000	ROLLER, cam chain guide .....	1	
9	14605-286-020	PIN, cam chain roller .....	1	
10	14606-286-000	COLLAR, cam chain roller .....	1	
11	14607-300-000	RUBBER, cam chain roller pin .....	2	
12	14611-312-000	GUIDE, cam chain .....	1	
13	14612-285-000	PIN, cam chain guide .....	1	
14	90009-300-000	BOLT, tensioner adjusting .....	1	~1044805
	90009-300-010	BOLT, tensioner adjusting .....	1	CB750E-1044806~
15	90061-246-000	BOLT, hex., knock, 7x12 .....	2	
16	92000-06205	BOLT, hex., 6x36 .....	3	~1064902
	95700-00305	BOLT, flange, 6x36 .....	3	CB750E-1064903~
17	94001-06300	NUT, hex., 6mm .....	1	~1064902
18	94101-05000	WASHER, plain, 6mm .....	3	

## E-7 Contact Breaker - Spark Advancer

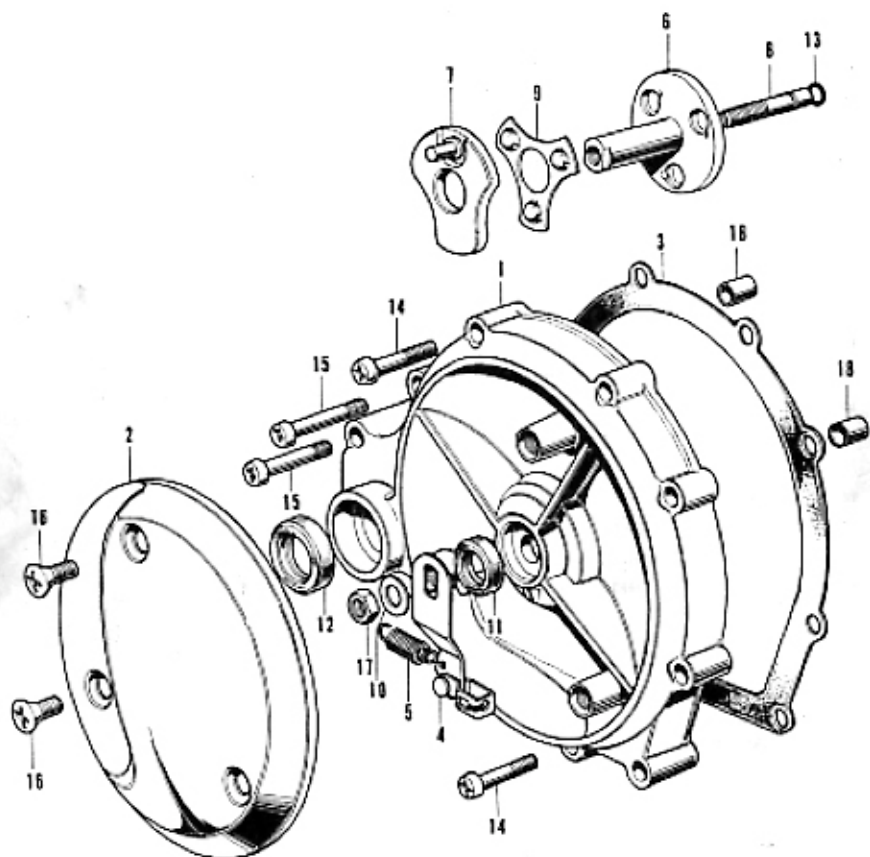


## E-7 Contact Breaker - Spark Advancer

Ref. No.	Part No.	Description	Reqd. No. CB750	Remarks
1	30200-300-006	BREAKER ASSY., contact (HITACHI) .....	1	~1024073
	30200-300-015	BREAKER ASSY., contact (HITACHI) .....	1	CB750E-1024074~
2	30201-300-006	PLATE, contact breaker (HITACHI) .....	1	~1024073
	30201-300-015	PLATE, contact breaker (HITACHI) .....	1	CB750E-1024074~
3	30203-300-005	BREAKER, right contact (HITACHI) .....	1	
4	30204-300-005	BREAKER, left contact (HITACHI) .....	1	
5	30205-003-005	FELT, oil (HITACHI) .....	1	
6	30215-300-005	PLATE, shift breaker (HITACHI) .....	1	
7	30220-300-005	ADVANCER ASSY., spark (HITACHI) ...	1	
8	30231-300-010	SHAFT, advancer .....	1	
9	30233-300-000	WASHER, special, advancer shaft .....	1	
10	30250-300-006	CONDENSER COMP. (HITACHI) .....	2	
11	30254-300-300	GROMMET, primary cord .....	1	
12	30370-300-020	COVER COMP., point .....	1	
13	30372-300-300	GASKET, point cover .....	1	
14	91301-300-000	O-RING, 6×2.3 .....	1	
15	93500-05012-0A	SCREW, pan, 5×12 .....	3	
16	93700-05032-02	SCREW, oval, 6×32 .....	2	
17	94002-00000	NUT, hex, 6 mm .....	1	
18	94101-05000	WASHER, plain, 5 mm .....	3	
19	94101-06000	WASHER, plain, 6 mm .....	1	



## E-8 Clutch Cover

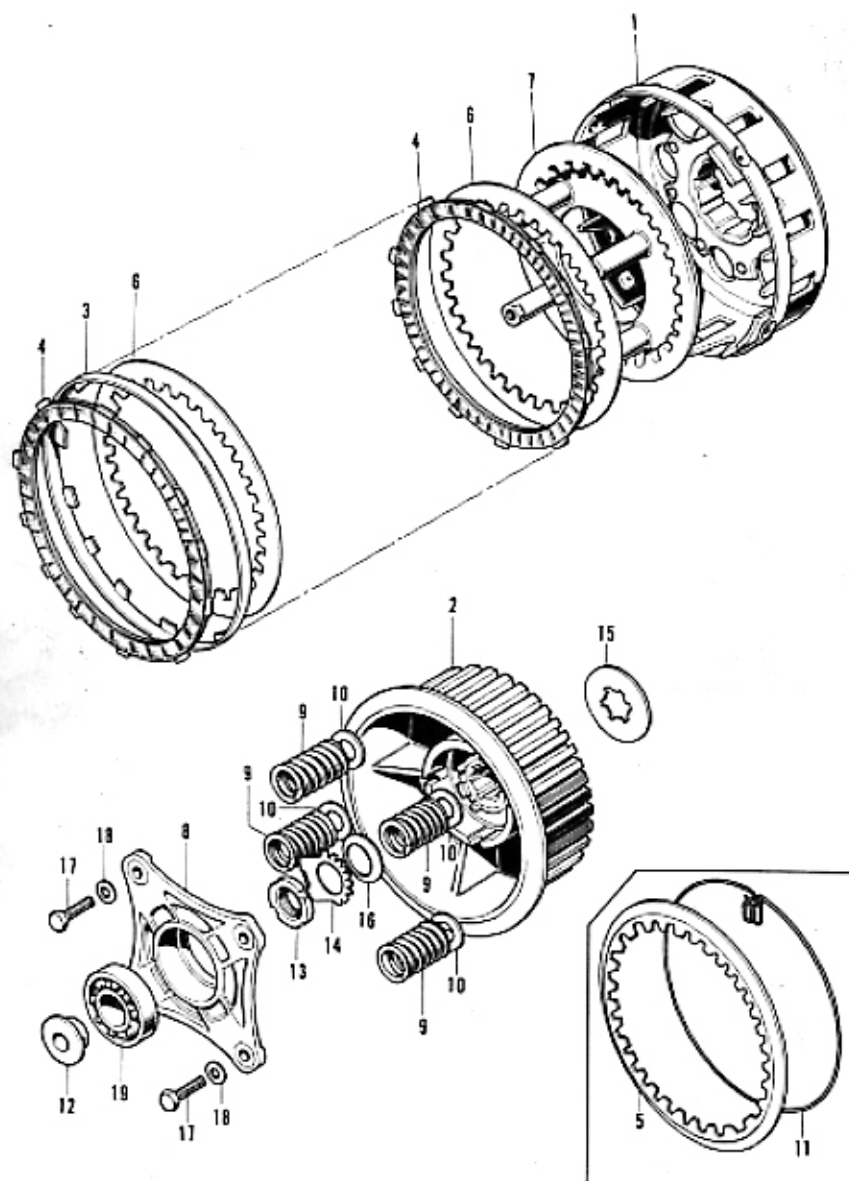




# E-8 Clutch Cover

Ref. No.	Part No.	Description	Reqd. No. CB750	Remarks
1	11342-300-090	COVER, clutch .....	1	~1007414
	11342-300-060	COVER, clutch .....	1	CB750E-1007415~
2	11348-300-010	COVER, clutch adjusting .....	1	
3	11396-300-040	GASKET, clutch cover .....	1	~1007414
	11396-300-050	(Superseded by 11396-300-303)		
	11396-300-303	GASKET, clutch cover .....	1	CB750E-1007415~
4	22810-300-000	LEVER COMP., clutch .....	1	
5	22815-300-000	SPRING, clutch lever .....	1	
6	22820-300-000	SHAFT, clutch release .....	1	
7	22830-300-000	CAM COMP., clutch lifter .....	1	
8	22841-300-000	BOLT, clutch adjusting .....	1	
9	22860-300-006	RETAINER COMP., clutch ball .....	1	
10	90402-822-000	WASHER, head, 8 mm .....	1	
11	91202-216-000	OIL-SEAL, 14x24x5 .....	1	
12	91204-286-003	OIL-SEAL, 18x29x7 (ARAJ) .....	1	
13	91301-283-000	O-RING, 6x2.4 .....	1	
14	90500-09028	SCREW, pan, 6x28 .....	5	
15	90500-09036	SCREW, pan, 6x36 .....	3	
16	93700-06016-02	SCREW, oval, 6x16 .....	3	
17	94003-08000-0S	NUT, hex., 8 mm .....	1	
18	94301-08140	PIN, dowel, 8x14 .....	2	

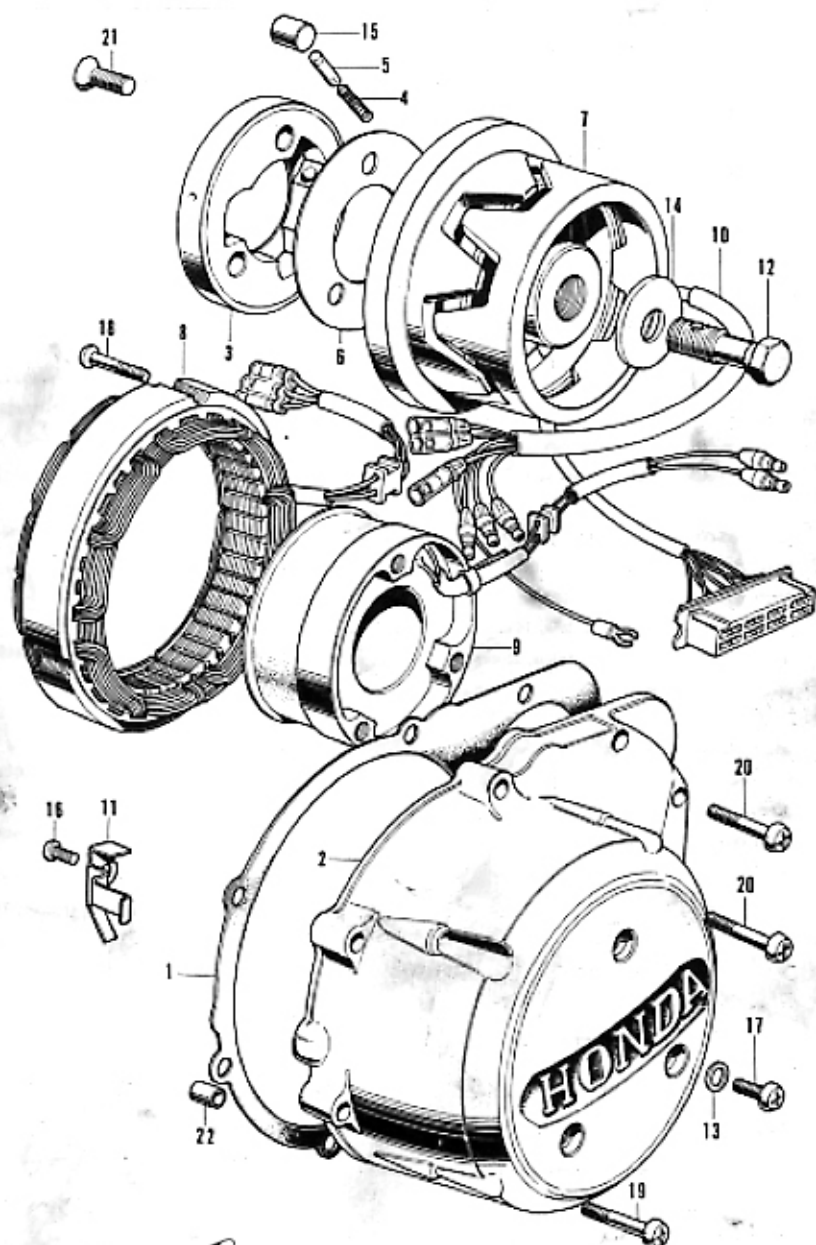
# E-9 Clutch



# E-9 Clutch

Ref. No.	Part No.	Description	Reqd. No. CB750	Remarks
1	22100-300-010	OUTER COMP., clutch .....	1	~1006079
	22100-300-020	OUTER COMP., clutch .....	1	CB750E-1006080~
2	22120-300-010	(Superseded by 22120-300-020)		
	22120-300-020	CENTER, clutch .....	1	
3	22151-300-000	RING, clutch outer .....	1	~1006079
4	22201-300-000	DISK, clutch friction .....	7	
5	22311-292-000	PLATE A, clutch .....	1	~1001759
6	22321-283-000	PLATE B, clutch .....	6	
7	22350-300-010	PLATE, clutch pressure .....	1	
8	22360-300-010	PLATE, clutch lifter .....	1	
9	22401-275-000	SPRING, clutch .....	4	~1006451
	22401-300-000	SPRING, clutch .....	4	CB750E-1006452~1042805
	22401-258-000	SPRING, clutch .....	4	CB750E-1042806~
10	22402-300-303	SEAT, clutch spring .....	4	CB750E-1003098~1006451
11	22431-300-000	RING, clutch plate stopper .....	1	~1001759
12	22846-300-000	PIECE, clutch lifter .....	1	
13	90231-200-010	NUT, lock, 15 mm .....	1	
14	90431-292-000	WASHER, lock, 16 mm .....	1	
15	90432-300-301	WASHER, spline, 25 mm .....	1	~1044806
	90432-300-000	WASHER, spline, 25 mm .....	1	CB750E-1044806~
16	90481-292-000	WASHER, oil filter rotor lock .....	1	
17	92000-06022	BOLT, hex 7/6×22 .....	4	~1064902
	95700-06020	BOLT, flange, 6×20 .....	4	CB750E-1064903~
18	94101-06000	WASHER, plain, 6 mm .....	4	~1064902
19	95100-60030	BEARING, ball, 6003 .....	1	

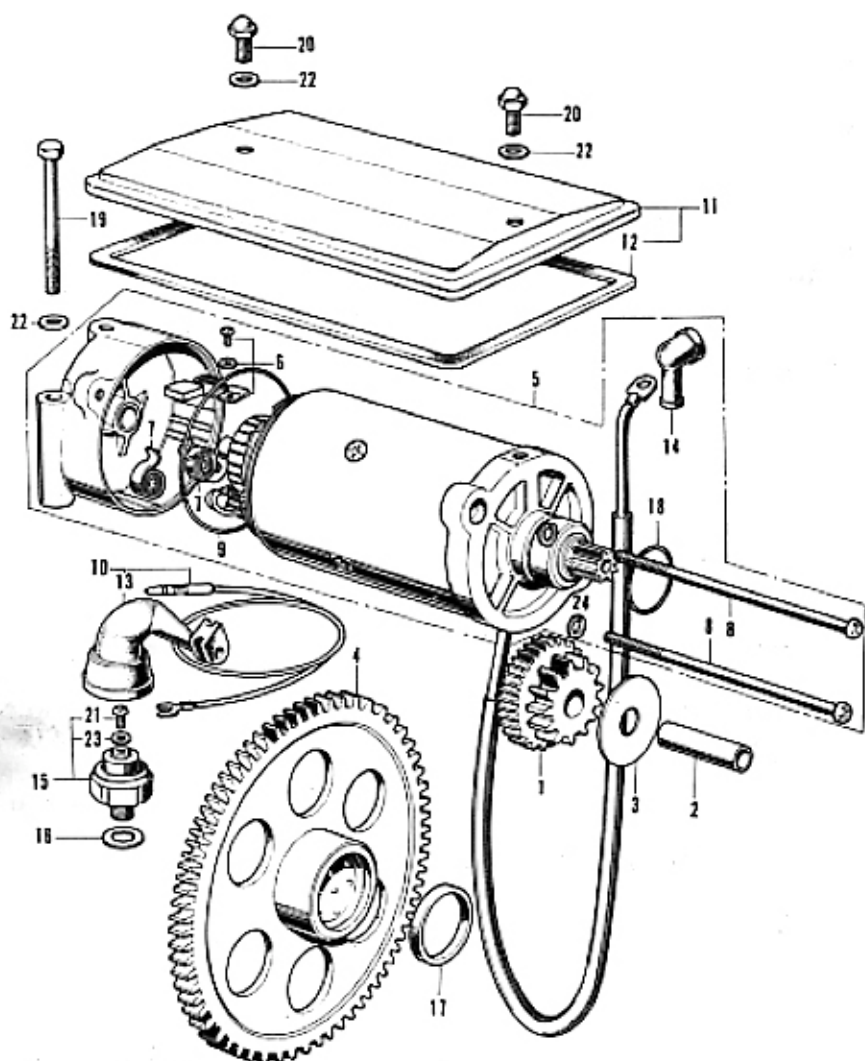
# E-10 A.C. Generator • Dynamo Cover



# E-10 A. C. Generator - Dynamo Cover

Ref. No.	Part No.	Description	Reqd. No. CB750	Remarks
1	11397-300-000	(Superseded by 11397-300-303) .....		
	11397-300-303	GASKET, dynamo cover .....	1	
2	11631-300-040	COVER, dynamo .....	1	
3	28120-300-000	CLUTCH, starting .....	1	
4	28125-516-030	SPRING, starting clutch roller .....	3	
5	28126-516-020	CAP, starting clutch roller spring .....	3	
6	28128-516-000	PLATE, starting clutch side .....	1	
7	31101-300-035	ROTOR COMP., (HITACHI) .....	1	
8	31102-300-003	STATOR COMP., (HITACHI) .....	1	
9	31103-300-035	COIL COMP., field (HITACHI) .....	1	
10	31110-300-000	HARNES, A.C. generator wire .....	1	
11	33116-300-010	PLATE, A.C. generator cord setting .....	1	
12	90014-300-000	BOLT, rotor set .....	1	~1001080
	90014-300-010	BOLT, rotor set .....	1	CB750E-1001081~
13	90425-300-000	WASHER, 11 mm .....	3	
14	90428-300-000	WASHER, 10 mm .....	1	~1001080
	90428-300-010	WASHER, 12 mm .....	1	CB750E-1001081~
15	91101-516-000	ROLLER, 15x13 .....	3	
16	93500-00012	SCREW, pan, 6x12 .....	1	
17	93500-00020	SCREW, pan, 6x20 .....	3	
18	93500-00028	SCREW, pan, 6x28 .....	4	
19	93500-00032	SCREW, pan, 6x32 .....	7	
20	93500-00036	SCREW, pan, 6x36 .....	3	
21	90500-08022	SCREW, flat, 8x22 .....	3	~1020143
	90553-300-000	SCREW, flat, 8x22 .....	3	CB750E-1026144~
22	94301-08140	PIN, dowel, 8x14 .....	2	

# E-11 Starting Motor

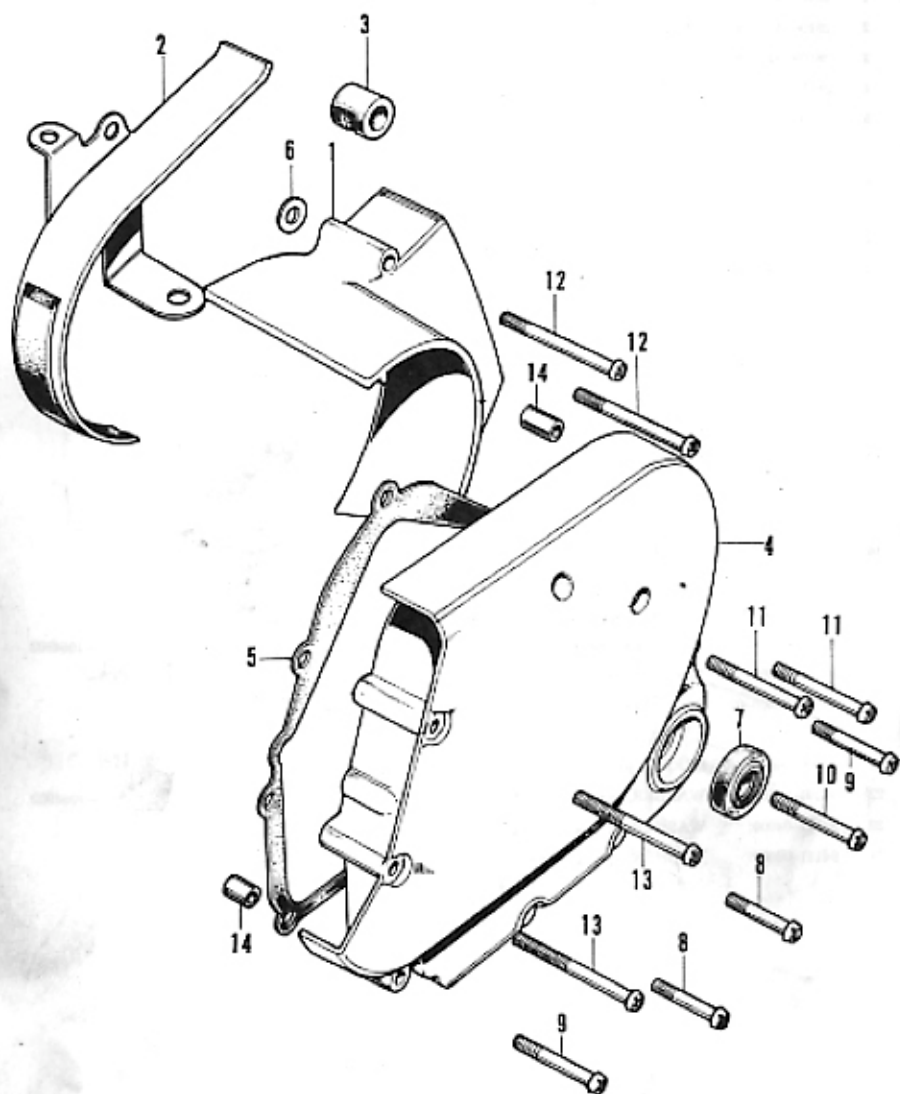




# E-11 Starting Motor

Ref. No.	Part No.	Description	Req'd. No. CU750	Remarks
1	28101-300-000	GEAR, starting motor reduction .....	1	
2	28106-300-000	SHAFT, starter reduction gear .....	1	
3	28109-300-000	PLATE, starting gear setting .....	1	
4	28110-300-000	GEAR COMP., starting clutch .....	1	
5	31900-300-000	MOTOR ASSY., starting .....	1	
6	31201-292-158	BRUSH-SET, carbon (MITSUBA) .....	1	
7	31204-292-158	SPRING, carbon brush (MITSUBA) .....	2	
8	31206-286-158	BOLT, gear cover setting (MITSUBA) .....	2	
9	31206-286-158	O-RING (MITSUBA) .....	1	
10	31270-300-000	CORD ASSY., oil pressure switch .....	1	
11	31280-300-000	COVER COMP., starting motor .....	1	
12	31282-300-000	PACKING, starting motor cover .....	1	
13	31283-300-000	GROMMET, oil pressure switch cord .....	1	
14	32411-253-000	COVER, starting motor terminal .....	1	
15	35500-300-000	SWITCH ASSY., oil pressure .....	1	
16	90543-300-000	WASHER, oil bolt .....	1	
17	91215-300-003	OIL-SEAL, 25×33×4 (ARAI) .....	1	
18	91309-300-000	O-RING, 24.4×3.1 .....	1	
19	92000-00056	BOLT, hex., 6×56 .....	2	-1064902
	95700-06056	BOLT, flange, 6×56 .....	2	CU750E-1064903~
20	92800-06008-02	BOLT, hex., cap, 6×8 .....	2	
21	93500-04005-0A	SCREW, pan, 4×5 .....	1	
22	94101-06000	WASHER, plain, 6 mm .....	2	~1064902
23	94111-04000	WASHER, spring, 4 mm .....	1	
24	94111-06000	WASHER, spring, 6 mm .....	2	

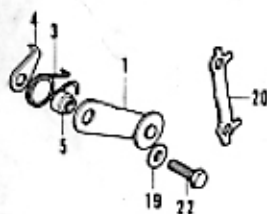
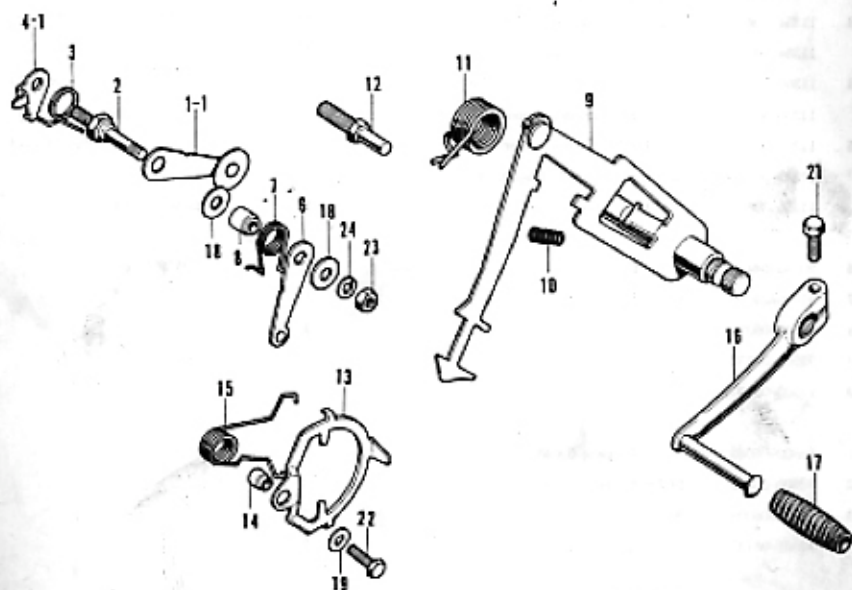




# E-12 Mission Cover - Rear Cover

Ref. No.	Part No.	Description	Reqd. No., CB750	Remarks
1	11351-300-020	COVER, left crankcase rear .....	1	~1005143
	11351-300-040	COVER, left crankcase rear .....	1	CB750E-1020144~1044805
	11351-300-050	COVER, left crankcase rear .....	1	CB750E-1044806~
2	11353-300-010	PROTECTOR, case .....	1	CB750E-1020144~1044805
3	11354-300-000	(Superseded by 11354-300-010) .....	1	CB750E-1020144~1044805
	11354-300-010	RUBBER, final chain guide .....	1	CB750E-1044806~
4	11360-300-000	(Superseded by 11360-300-040) .....	1	~1007414
	11360-300-040	COVER, crankcase mission .....	1	CB750E-1007415~
5	11395-300-020	GASKET, mission cover .....	1	~1007414
	11395-300-030	(Superseded by 11395-300-003) .....		
	11395-300-003	GASKET, mission cover .....	1	CB750E-1007415~
6	90545-044-000	WASHER, crank arm .....	1	CB750E-1044806~
7	91295-286-013	OIL-SEAL, 14x28x7 .....	1	
8	93500-05025	SCREW, pan, 6x25 .....	2	
9	93500-06032	SCREW, pan, 6x32 .....	2	
10	93500-06040	SCREW, pan, 6x40 .....	1	
11	93500-06045	SCREW, pan, 6x45 .....	2	
12	93500-06050	SCREW, pan, 6x50 .....	2	
13	93500-06056	SCREW, pan, 6x56 .....	2	
14	94301-08140	PIN, dowel, 8x14 .....	2	

# E-13 Gear Shift - Drum Stopper



# E-13 Gear Shift - Drum Stopper

Ref. No.	Part No.	Description	Repl. No. CB750	Remarks
1	2430-300-000	STOPPER, shift drum .....	1	~ 100424
	2430-300-030	STOPPER, shift drum .....	1	CB750E-1000425 ~ 1005143
1-1	2430-300-040	STOPPER, shift drum .....	1	CB750E-1005144 ~
2	2434-300-000	SHAFT, shift drum stopper pivot .....	1	CB750E-1005144 ~
3	2435-300-000	SPRING, shift drum stopper .....	1	
4	2436-300-000	PLATE, shift fork shaft stopper .....	1	~ 1026143
4-1	2436-300-010	PLATE, shift fork shaft stopper .....	1	CB750E-1026144 ~
5	2437-300-000	PIVOT, stopper arm .....	1	~ 1005143
6	2440-300-010	ARM COMP., neutral stopper .....	1	CB750E-1026144 ~ 1044967
	2440-300-020	ARM COMP., neutral stopper .....	1	CB750E-1044968 ~
7	2445-300-010	SPRING, neutral stopper .....	1	CB750E-1005144 ~ 1044967
	2445-300-020	SPRING, neutral stopper .....	1	CB750E-1044968 ~
8	2447-300-000	PIVOT, neutral stopper .....	1	CB750E-1026144 ~
9	2450-300-010	SPINDLE COMP., gear shift .....	1	
10	2451-300-000	SPRING, gear shift arm .....	1	
11	2451-300-020	SPRING, gear shift return .....	1	
12	2452-300-000	PIN, gear shift return spring .....	1	
13	2456-300-000	STOPPER, gear shift positive .....	1	
14	2453-300-000	COLLAR, stopper arm .....	1	
15	2455-300-000	SPRING, positive stopper .....	1	
16	24701-300-020	PEDAL, gear change .....	1	
17	24781-205-000	RUBBER, change pedal .....	1	
18	90417-001-000	WASHER, shift drum side .....	2	CB750E-1000144 ~
19	90417-041-000	WASHER, shift drum side .....	2	
20	90435-300-000	WASHER, twin .....	1	~ 1005143
21	92000-06020	BOLT, hex, 6x20 .....	1	
22	92000-06025	BOLT, hex, 6x25 .....	2	~ 1026143
			1	CB750E-1005144 ~
23	94001-06000	NUT, hex, 6mm .....	1	CB750E-1026144 ~
24	94111-06000	WASHER, spring, 6mm .....	1	CB750E-1026144 ~

# E-14 Oil Filter • Oil Pan

