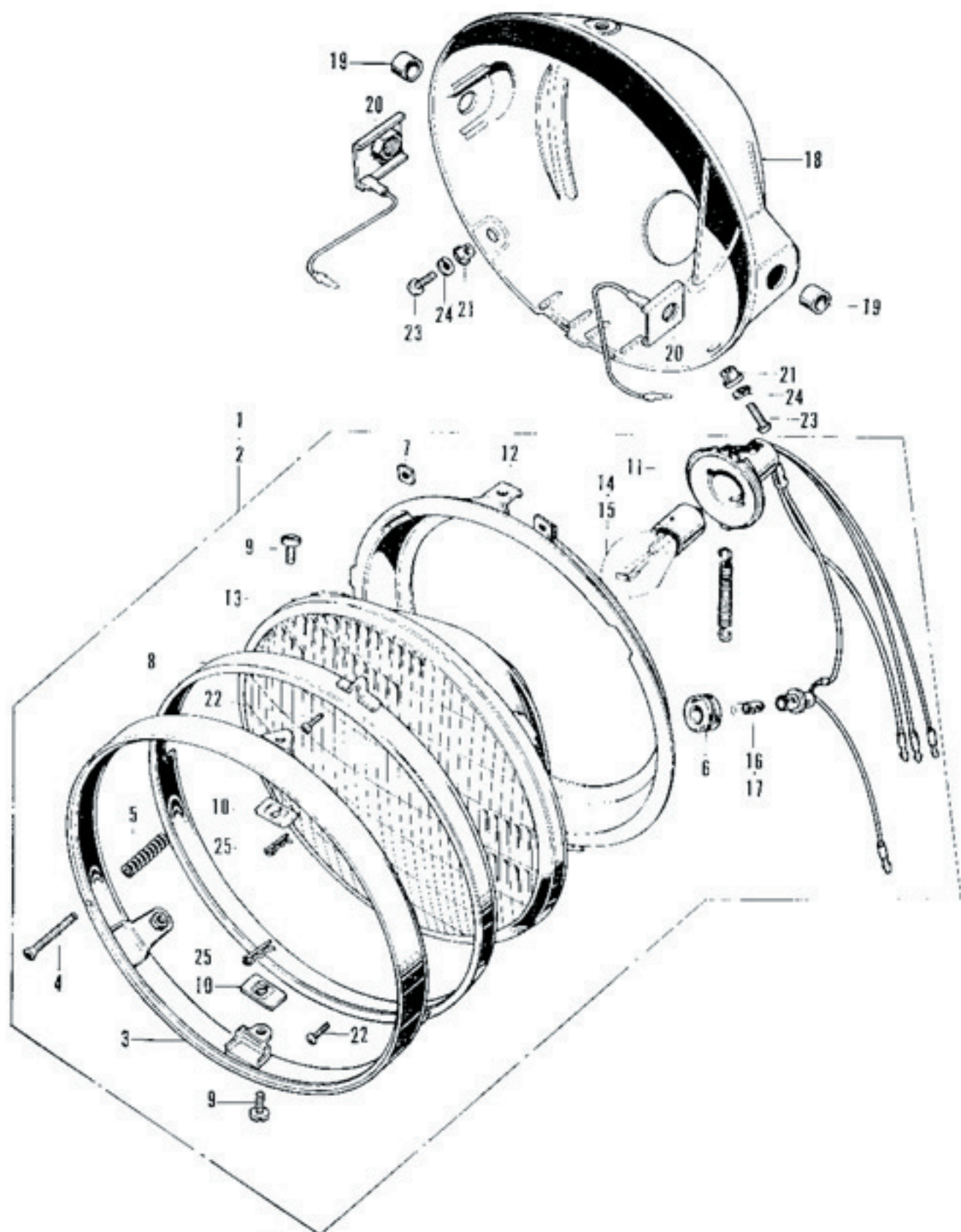


F-24 Head Light
(Used in Australia & General export)

Ref. No.	Part No.	Description	Reqd. No.			F.R.T.	Remarks
			CS	CS	CS		
			750	750K1	750K2		
1	33100-300-043	LIGHT ASSY., head (STANLEY)	-	1	1	0.1	CB750-1053399~
2	33101-300-043	RIM, head light (STANLEY).....	-	1	1	0.2	CB750-1053399~
3	33103-300-003	SCREW, beam adjusting (STANLEY).....	-	1	1	0.2	CB750-1053399~
4	33107-300-003	SPRING, beam adjusting (STANLEY)	-	1	1	0.2	CB750-1053399~
5	33117-292-003	NUT, beam adjusting (STANLEY)	-	1	1	0.2	CB750-1053399~
6	33120-300-013	UNIT, head light (STANLEY)	-	1	1	0.2	CB750-1053399~
7	33125-292-670	SCREW, unit holder	-	2	2	0.2	CB750-1053399~
8	33128-200-030	NUT, unit holder	-	2	2	0.2	CB750-1053399~
9	33130-300-003	SOCKET COMP., head light cord (STANLEY)	-	1	1	0.2	CB750-1053399~
10	61301-300-010AZ	CASE, head light (Candy blue green).....	-	1	-	0.2	CB750-1053399~
	61301-300-010CM	CASE, head light (Candy ruby red).....	-	1	-		CB750-1053399~
	61301-300-010CQ	CASE, head light (Candy gold).....	-	1	-		CB750-1053399~
	61301-300-010EE	CASE, head light (Candy garnet brown) ...	-	1	-		CB750-1053399~
	61301-300-010EF	CASE, head light (Valley green metallic) ...	-	1	-		CB750-1053399~
	61301-300-010EG	CASE, head light (Polynesian blue metallic) ...	-	1	-		CB750-1053399~
○	61301-300-010B	CASE, head light (Black).....	-	-	1		
11	61302-300-000	COLLAR, head light case	-	2	2	0.1	CB750-1053399~
12	61303-292-000	WASHER, head light setting	-	2	-	0.1	CB750-1053399~
○	61303-336-000	WASHER, head light case	-	-	2		
13	61304-292-000	COLLAR, head light setting	-	3	3	0.1	CB750-1053399~
14	93500-05016-0B	SCREW, pan, 5×16	-	3	3		
15	94111-05000	WASHER, spring, 5 mm	-	3	3		
16	94251-05000	PIN, lock, 5 mm	-	2	2		

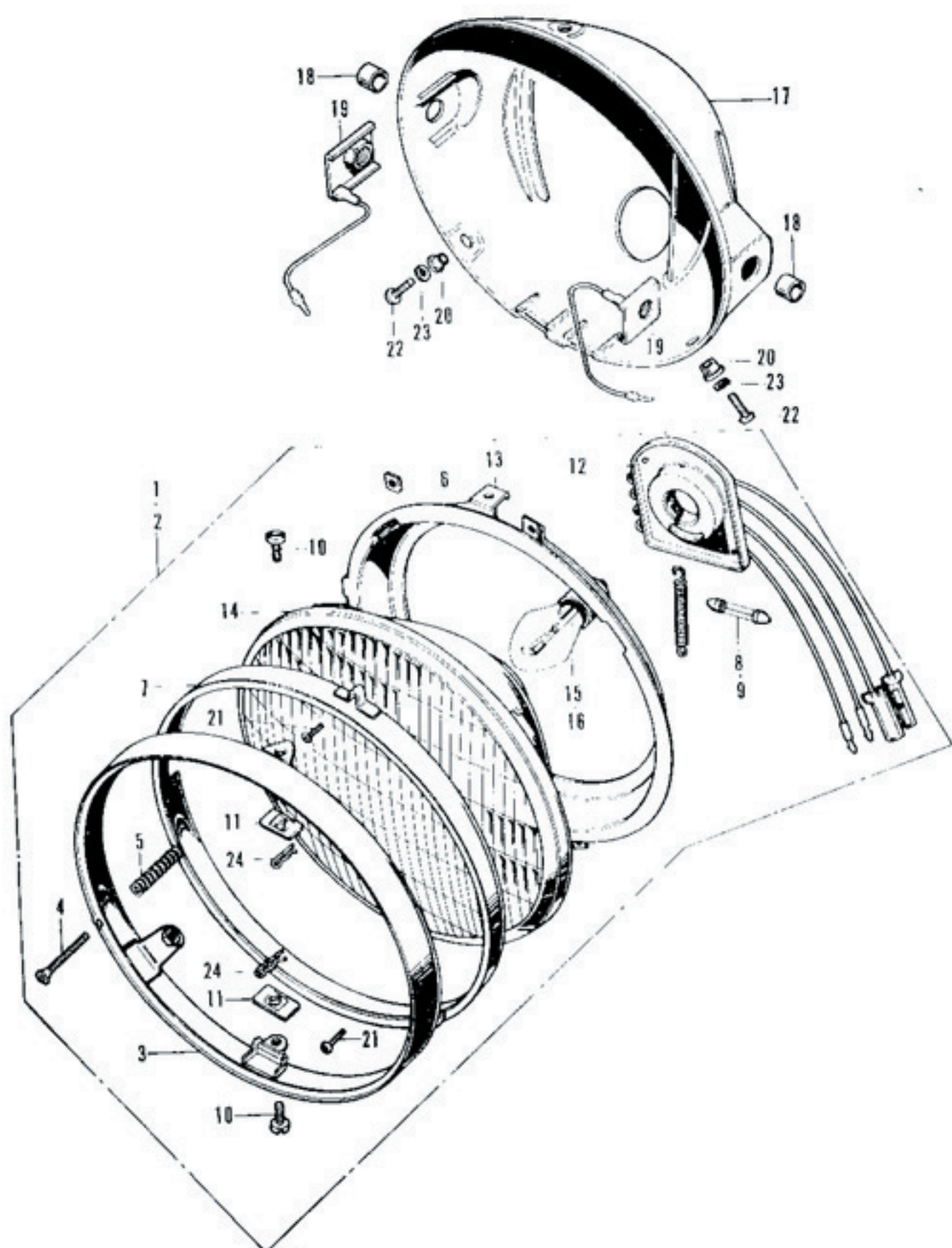
F-25 Head Light (Used in England • Germany & E.D.)



F-25 Head Light
(Used in England • Germany & E.D.)

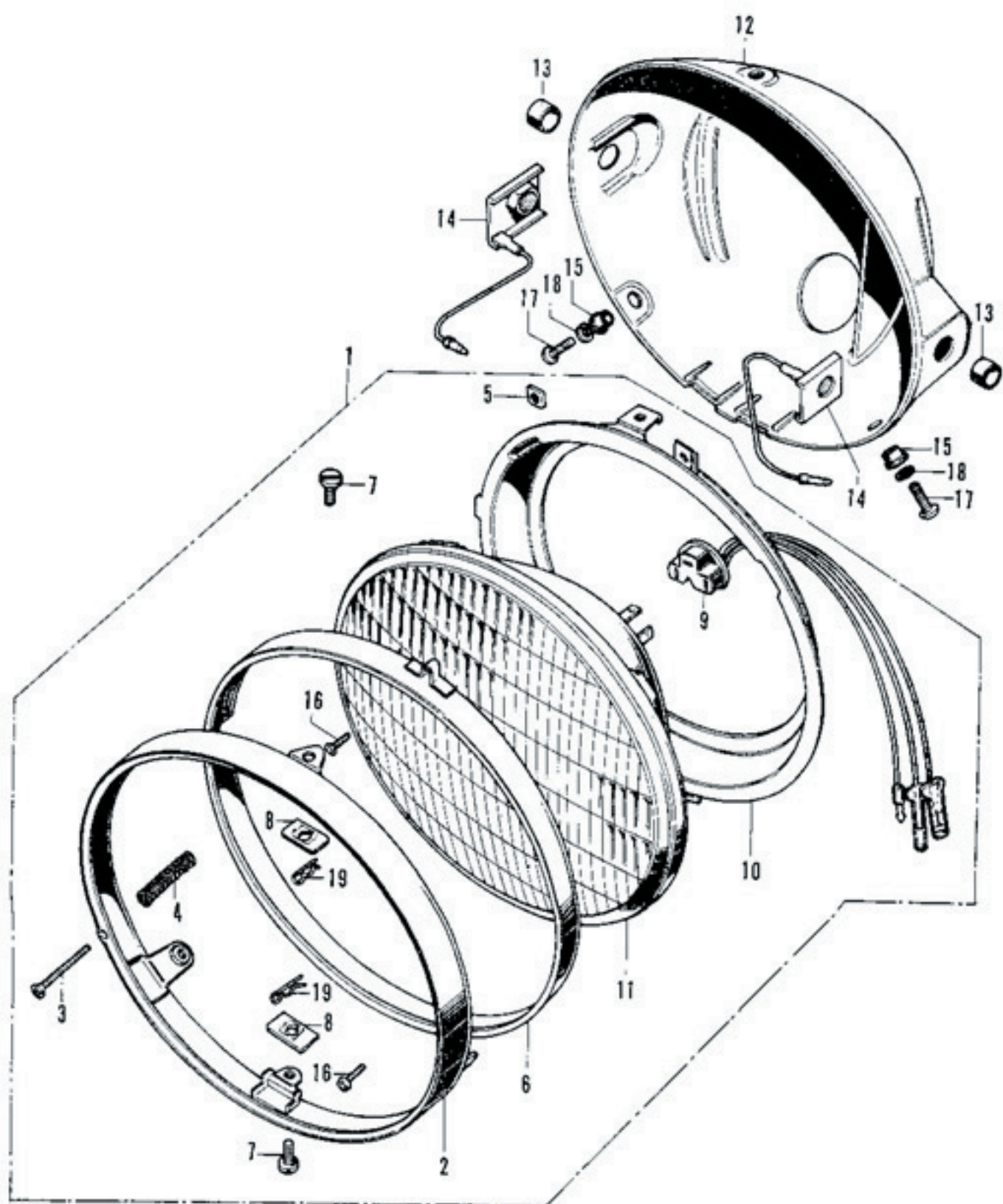
Ref. No.	Part No.	Description	Reqd. No.			F.R.T.	Remarks
			08	09	03		
			790	790K1	790K2		
1	33100-300-600	LIGHT ASSY., head (12V 35/35W-4W)..... (Used in England)	1	1	1	0.1	
2	33100-300-610	LIGHT ASSY., head (12V 35/35W-4W)..... (Used in Germany & E.D.)	1	1	1		
3	33101-300-673	RIM, head light	1	1	1	0.2	
4	33103-300-003	SCREW, beam adjusting (STANLEY).....	1	1	1	0.2	
5	33107-300-003	SPRING, beam adjusting (STANLEY)	1	1	1	0.2	
6	33108-568-610	RUBBER, joint	1	1	1		
7	33117-292-003	NUT, beam adjusting (STANLEY)	1	1	1	0.2	
8	33121-300-672	RING, retaining	1	1	1		
9	33125-292-670	SCREW, unit holder	2	2	2		
10	33128-292-670	NUT, unit holder	2	2	2		
11	33130-300-611	SOCKET COMP., head light & marker light	1	1	1		
12	33153-300-622	RING, mounting	1	1	1		
13	33321-533-611	UNIT, head light	1	1	1		
14	34901-259-611	BULB, head light (12V 35/35W)	1	1	1		
		(Used in England)					
15		BULB, head light (12V 35/35W)	1	1	1		
		(To be locally purchased in Germany & E.D.)					
16	34902-259-610	BULB, marker light (12V4W).....	1	1	1		
		(Used in England)					
17		BULB, marker light (12V4W).....	1	1	1		
		(To be locally purchased in Germany & E.D.)					
18	61301-300-010AZ	CASE, head light (Candy blue green).....	1	1	-		
	61301-300-010CM	CASE, head light (Candy ruby red).....	1	1	-		
	61301-300-010CQ	CASE, head light (Candy gold).....	1	1	-		CB750-1019210~
	61301-300-010EE	CASE, head light (Candy garnet brown) ...	-	1	-		CB750-1053399~
	61301-300-010EF	CASE, head light (Valley green metallic) ...	-	1	-		CB750-1053399~
	61301-300-010EG	CASE, head light (Polynesian blue metallic)	-	1	-		CB750-1053399~
○	61301-300-010B	CASE, head light (Black).....	-	-	1		
19	61302-300-000	COLLAR, head light case	2	2	2		
20	61303-292-000	WASHER, head light setting	2	2	-	0.1	
○	61303-336-010B	WASHER, head light case	-	-	2		
21	61304-292-000	COLLAR, head light setting	3	3	3		
22	93500-03010-0B	SCREW, pan, 3×10	2	2	2		
23	93500-05016-0B	SCREW, pan, 5×16	3	3	3		
24	94111-05000	WASHER, spring, 5 mm	3	3	3		
25	94251-05000	PIN, lock, 5 mm	2	2	2		

F-26 Head Light (Used in France & Netherlands)



F-26 Head Light
(Used in France & Netherlands)

Ref. No.	Part No.	Description	Reqd. No.			F.R.T.	Remarks
			61	61	61		
			750	750K1	750K2		
1	33100-300-621	LIGHT ASSY., head (12V 36/45W)..... (Used in France)	1	1	1	0.1	
2	33100-300-690	LIGHT ASSY., head (12V 36/36W)..... (Used in Netherlands)	1	1	-	0.1	
3	33101-300-673	RIM, head light	1	1	1	0.2	
4	33103-300-003	SCREW, beam adjusting	1	1	1	0.2	
5	33107-300-003	SPRING, beam adjusting	1	1	1	0.2	
6	33117-292-003	NUT, beam adjusting	1	1	1	0.2	
7	33121-300-672	RING, retaining	1	1	1	0.2	
8	33123-568-740	BULB, marker light (12V 4W)	1	1	-	0.1	
		(Used in Netherlands)					
9		BULB, marker light (12V 4W)	1	1	1	0.1	
		(To be locally purchased in France)					
10	33125-292-670	SCREW, unit holder	2	2	2	0.2	
11	33128-292-670	NUT, unit holder	2	2	2	0.2	
12	33130-300-621	SOCKET, head light cord	1	1	1	0.2	
13	33153-300-622	RING, mounting	1	1	1	0.2	
14	33321-533-621	UNIT, head light	1	1	1	0.2	
15	33322-533-721	BULB, head light (12V 36/36W)	1	1	-	0.1	
		(Used in Netherlands)					
16		BULB, head light (12V 36/45W)	1	1	1	0.1	
		(To be locally purchased in France)					
17	61301-300-010AZ	CASE, head light (Candy blue green).....	1	1	-	0.2	
	61301-300-010CM	CASE, head light (Candy ruby red)	1	1	-		
	61301-300-010CQ	CASE, head light (Candy gold).....	1	1	-		CB750-1019210~
	61301-300-010EE	CASE, head light (Candy garnet brown) ...	-	1	-		CB750-1053399~
	61301-300-010EF	CASE, head light (Valley green metallic) ...	-	1	-		CB750-1053399~
	61301-300-010EG	CASE, head light (Polynesian blue metallic)...	-	1	-		CB750-1053399~
○	61301-300-010B	CASE, head light (Black).....	-	-	1		
18	61302-300-000	COLLAR, head light case	2	2	2	0.1	
19	61303-292-000	WASHER, head light setting	2	2	-	0.1	
○	61301-336-000	WASHER, head light case	-	-	2		
20	61304-292-000	COLLAR, head light setting	3	3	3	0.1	
21	93500-03010-0B	SCREW, pan, 3×10	2	2	2		
22	93500-05016-0B	SCREW, pan, 5×16	3	3	3		
23	94111-05000	WASHER, spring, 5 mm	3	3	3		
24	94251-05000	PIN, lock, 5 mm	2	2	2		

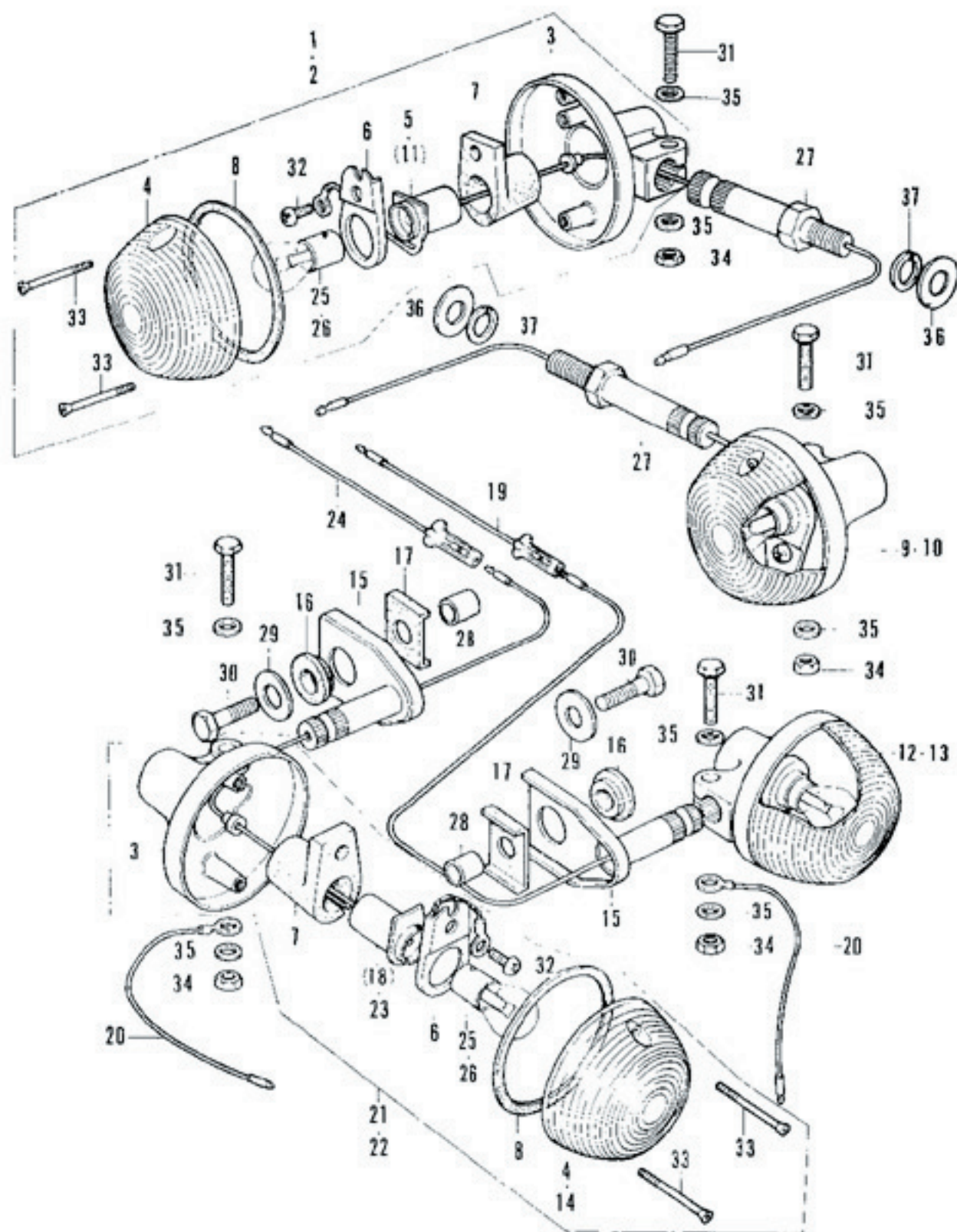


F-27 Head Light (Used in U.S.A.)

Ref. No.	Part No.	Description	Reqd. No.			F.R.T.	Remarks
			65 750	66 750K1	67 750K2		
1	33100-300-673	LIGHT ASSY., head (STANLEY)	1	1	1	0.1	
2	33101-300-673	RIM, head light (STANLEY)	1	1	1	0.2	
3	33103-300-003	SCREW, beam adjusting (STANLEY)	1	1	1	0.2	
4	33107-300-003	SPRING, beam adjusting (STANLEY)	1	1	1	0.2	
5	33117-292-003	NUT, beam adjusting (STANLEY)	1	1	1	0.2	
6	33121-300-672	RING, retaining (STANLEY)	1	1	1		
7	33125-292-670	SCREW, unit holder	2	2	2	0.2	
8	33128-292-670	NUT, unit holder	2	2	2	0.2	
9	33130-300-003	SOCKET COMP., head light cord (STANLEY)	1	1	1	0.2	
10	33153-300-671	RING, mounting (STANLEY)	1	1	1	0.2	
11	33321-606-003	UNIT, seal beam (STANLEY)	1	1	1	0.2	
12	61301-300-010AZ	CASE, head light (Candy blue green)	1	1	-	0.2	
	61301-300-010CM	CASE, head light (Candy ruby red)	1	1	-		
	61301-300-010CQ	CASE, head light (Candy gold)	1	1	-		CB750-1019210~
	61301-300-010EE	CASE, head light (Candy garnet brown) ...	-	1	-		CB750-1044650~
	61301-300-010EF	CASE, head light (Valley green metallic) ...	-	1	-		CB750-1044650~
	61301-300-010EG	CASE, head light (Polynesian blue metallic)	-	1	-		CB750-1044650~
○	61301-300-010B	CASE, head light (Black)	-	-	1		
13	61302-300-000	COLLAR, head light case	2	2	2	0.1	
14	61303-292-000	WASHER, head light setting	2	2	-	0.1	
○	61303-336-000	WASHER, head light case	-	-	2		
15	61304-292-000	COLLAR, head light setting	3	3	3	0.1	
16	93500-03010-0B	SCREW, pan, 3×10	2	2	2		
17	93500-05016-0B	SCREW, pan, 5×16	3	3	3		
18	94111-05000	WASHER, spring, 5 mm	3	3	3		
19	94251-05000	PIN, lock, 5 mm	2	2	2		

F-28 Winker

(Except for Germany · Netherlands & CB750K2 for U.S.A.)



F-28 Winker
(Except for Germany, Netherlands & CB750K2 for U.S.A.)

Ref. No.	Part No.	Description	Reqd. No.			F.R.T.	Remarks
			55	56	59		
			750	750K1	750K2		
1	33400-292-670	WINKER ASSY., right (12V 25W)..... (Not used in E.D.)	1	1	1	0.2	
2	33400-317-730	WINKER ASSY., right (12V 18W)..... (Used in E.D.)	-	1	1	0.2	
3	33401-292-003	BASE, winker (STANLEY)	4	4	4	0.3	
4	33402-268-671	LENS, winker..... (Available for front winker lens of E.D. type only)	4	4	4	0.1	
5	33402-292-003	SOCKET COMP., right winker(STNLEY).... (2pcs. are available for CB750K1 of E.D. type only)	1	1	1	0.2	
6	33407-284-000	HOLDER, winker socket.....	4	4	4	0.2	
7	33408-284-000	CUSHION, winker rubber	4	4	4	0.2	
8	33443-268-671	PACKING, winker lens	4	4	4	0.1	
9	33450-292-670	WINKER ASSY., left (12V 25W)..... (Not used in E.D.)	1	1	1	0.2	
10	33450-317-730	WINKER ASSY., left (12V 18W)..... (Used in E.D.)	-	1	1	0.2	
11	33453-292-003	SOCKET COMP., left winker (STANLEY) 1 (2pcs. are available for CB750K1 of E.D. type only)	1	1	1	0.2	
12	33600-300-000	WINKER ASSY., right rear (12V 25W)..... (Not used in E.D.)	1	1	1	0.2	
O13	33600-317-730	WINKER ASSY., right rear (12V 18W)..... (Used in E.D.)	-	1	-	0.2	
O	33600-323-631	WINKER ASSY., right rear (12V 18W)..... (Used in E.D.)	-	-	1		
O14	33602-323-631	LENS, rear winker (Used in E.D.)	-	2	2	0.1	
15	33607-292-000B	STAY, rear winker (Black).....	2	2	2	0.2	
16	33608-286-000	RUBBER B, rear winker mount	2	2	2	0.1	
17	33608-300-000	RUBBER, rear winker mount	2	2	2		
18	33610-300-000	SOCKET COMP., right rear winker	1	1	1		
		(Not available for CB750K1 of E.D. type)					
19	33615-300-730	SUB-CORD, right winker light..... (Used in E.D.)	-	1	-	0.2	
20	33620-300-000	CORD, rear winker earth	2	2	2	0.1	

F-28 Winker

(Except for Germany · Netherlands & CB750K2 for U.S.A.)

