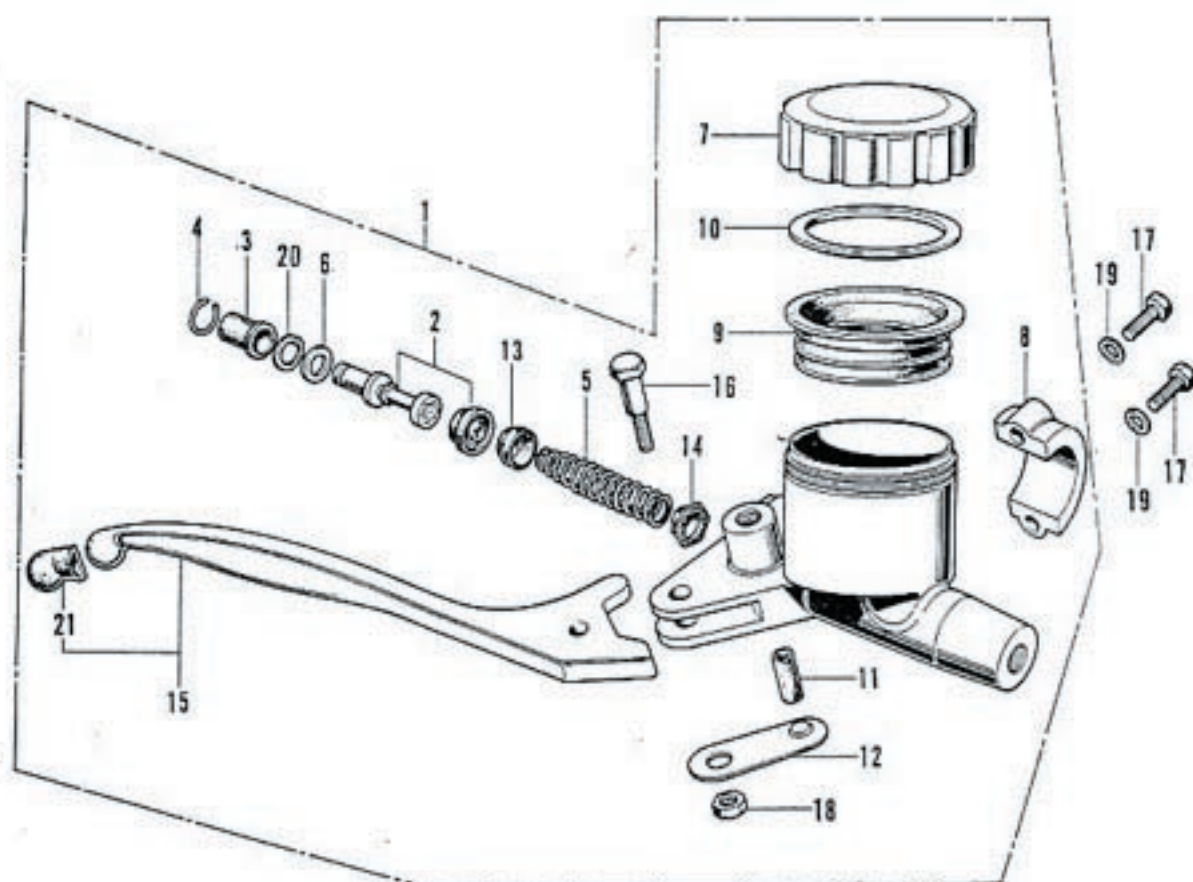


### F-3 Handle - Top Bridge

Ref. No.	Part No.	Description	Reqd. No. CB350F	Remarks
1	34902-259-000	BULB, dash (12V 3W).....	4	
2	37576-323-000	BASE, lamp socket .....	1	
3	37577-333-000	SOCKET, pilot lamp.....	1	
4	37579-323-000	SPRING, lamp socket set .....	1	
5	37581-333-000	CORD COMP., pilot lamp .....	1	
6	53100-333-000	PIPE, steering handle .....	1	
○	53100-333-611	PIPE, steering handle (Used in G & F).....	1	
7	53133-323-010	HOLDER, upper .....	1	
8	53231-333-000	BRIDGE, fork top.....	1	
9	90518-921-000	WASHER, plain, 8 mm .....	4	
10	90555-283-000	WASHER, special, 8 mm.....	4	
11	92000-08056-0B	BOLT, hex., 8x56.....	2	
12	93000-08036-0B	BOLT, hex., 8x36.....	4	
13	94021-08020-0S	NUT, hex., cap, 8 mm .....	2	

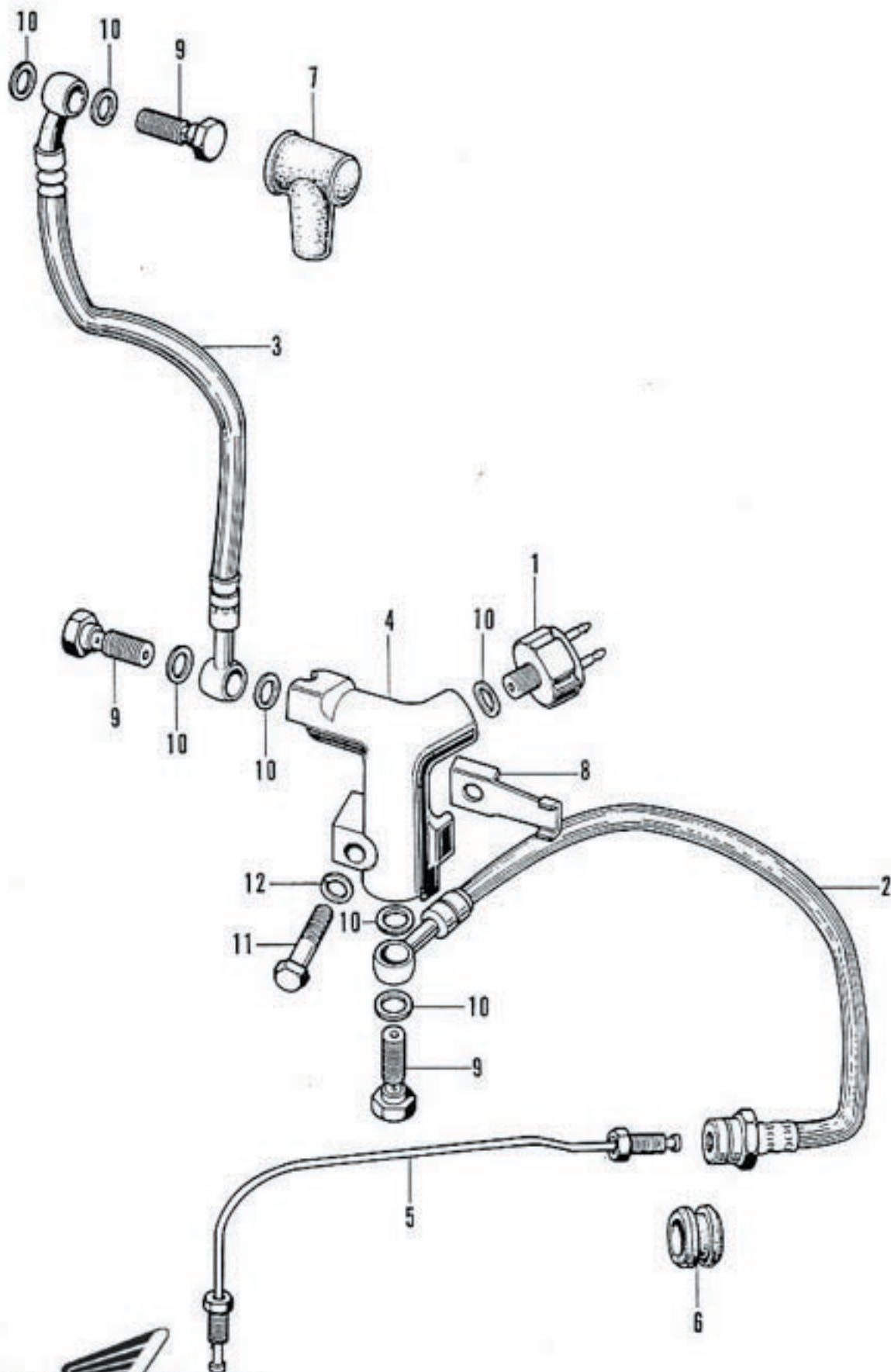
# F-4 Brake Master Cylinder



## F-4 Brake Master Cylinder

Ref. No.	Part No.	Description	Reqd. No. CB350F	Remarks
1	45500-333-670	CYLINDER ASSY., master (Used in A) .....	1	
○	45500-346-620	CYLINDER ASSY., master (Used in F & ED) ...	1	
	45500-346-680	CYLINDER ASSY., master .....	1	
2	45502-300-305	PISTON COMP. ....	1	
3	45504-300-003	BOOTS .....	1	
4	45505-300-003	STOPPER, boots .....	1	
5	45506-300-003	SPRING COMP. ....	1	
6	45512-300-003	WASHER, 10.5 mm .....	1	
7	45513-341-770	CAP, oil cup (Used in A) .....	1	
	45513-341-671	CAP, oil cup .....	1	
8	45517-300-003	HOLDER, master cylinder .....	1	
9	45520-300-000	DIAPHRAGM .....	1	
10	45521-300-010	PLATE, diaphragm .....	1	
11	45526-341-000	BUSH, right handle lever .....	1	
12	45527-300-000	PLATE, lever bush set .....	1	
13	46125-533-003	CUP, primary .....	1	
14	46140-533-003	VALVE COMP., check .....	1	
15	53170-333-000	LEVER ASSY., right handle .....	1	
16	90114-300-000	BOLT, handle lever pivot .....	1	
17	92000-06025	BOLT, hex., 6×25 .....	2	
18	94001-06000	NUT, hex., 6 mm .....	1	
19	94101-06000	WASHER, plain, 6 mm .....	2	
20	94520-18000	CIR-CLIP, internal, 18 mm .....	1	
21	95010-16000	CAP A, control lever .....	1	

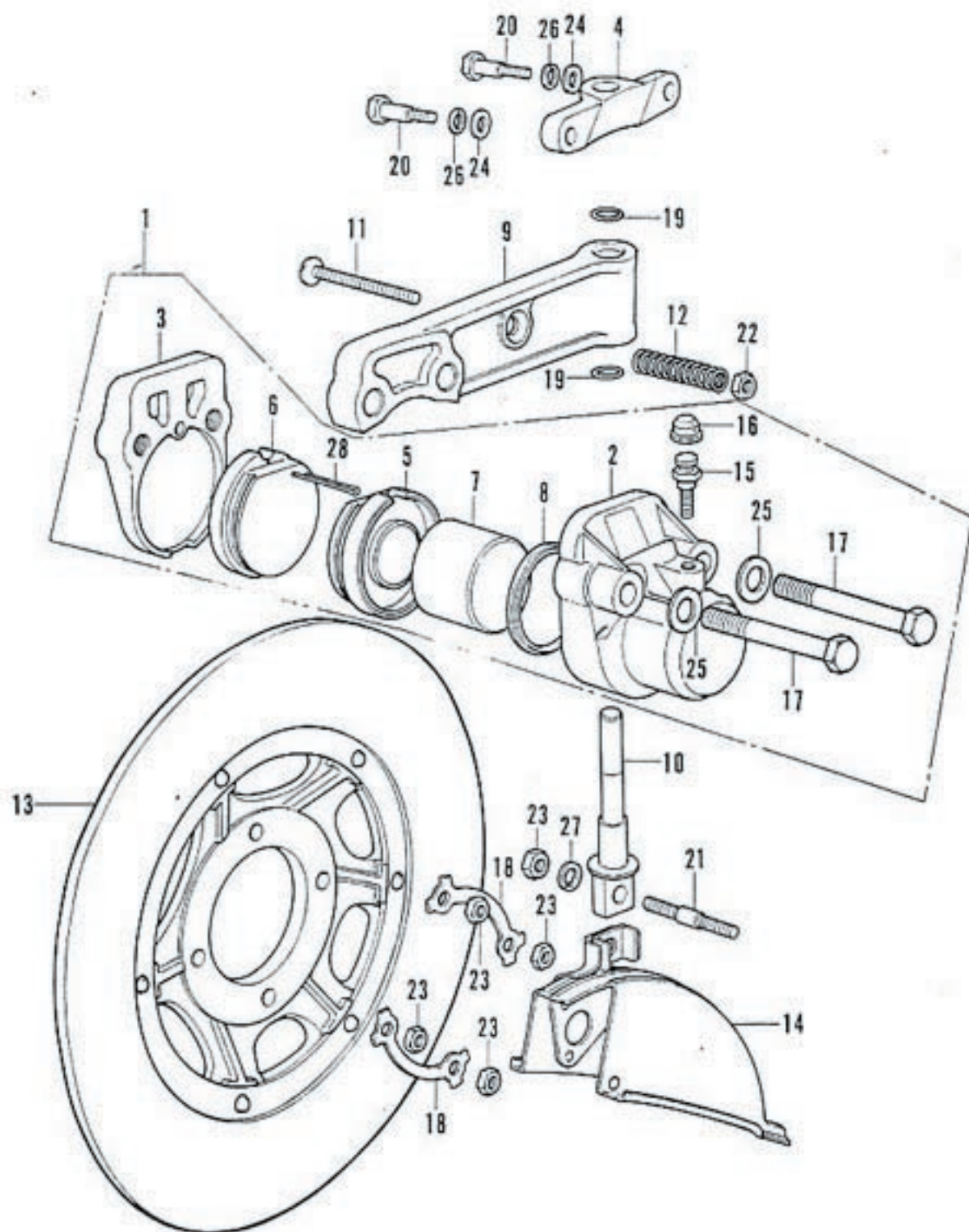
## F-5 Front Brake Hose



## F-5 Front Brake Hose

Ref. No.	Part No.	Description	Reqd. No. CB350F	Remarks
1	35350-300-006	(Superseded by 35350-300-016) .....	1	
○	35350-300-016	SWITCH, stop (NAILS) .....	1	
2	45125-300-020	HOSE A, front brake .....	1	
○ 3	45126-300-611	HOSE B, front brake (Used in G & F).....	1	
	45126-333-000	HOSE B, front brake .....	1	
4	45127-323-000	JOINT, 3 way.....	1	
5	45128-317-701	PIPE, front brake .....	1	
6	45146-300-000	GROMMET, brake .....	1	
7	45522-300-010	BOOTS, master cylinder .....	1	
8	53208-317-700	HOLDER, 3 way joint .....	1	
9	90145-300-000	BOLT, oil.....	3	
10	90545-300-000	WASHER, oil bolt.....	7	
11	92000-06028	BOLT, hex., 6×28.....	1	
12	94111-06000	WASHER, spring, 6 mm .....	1	

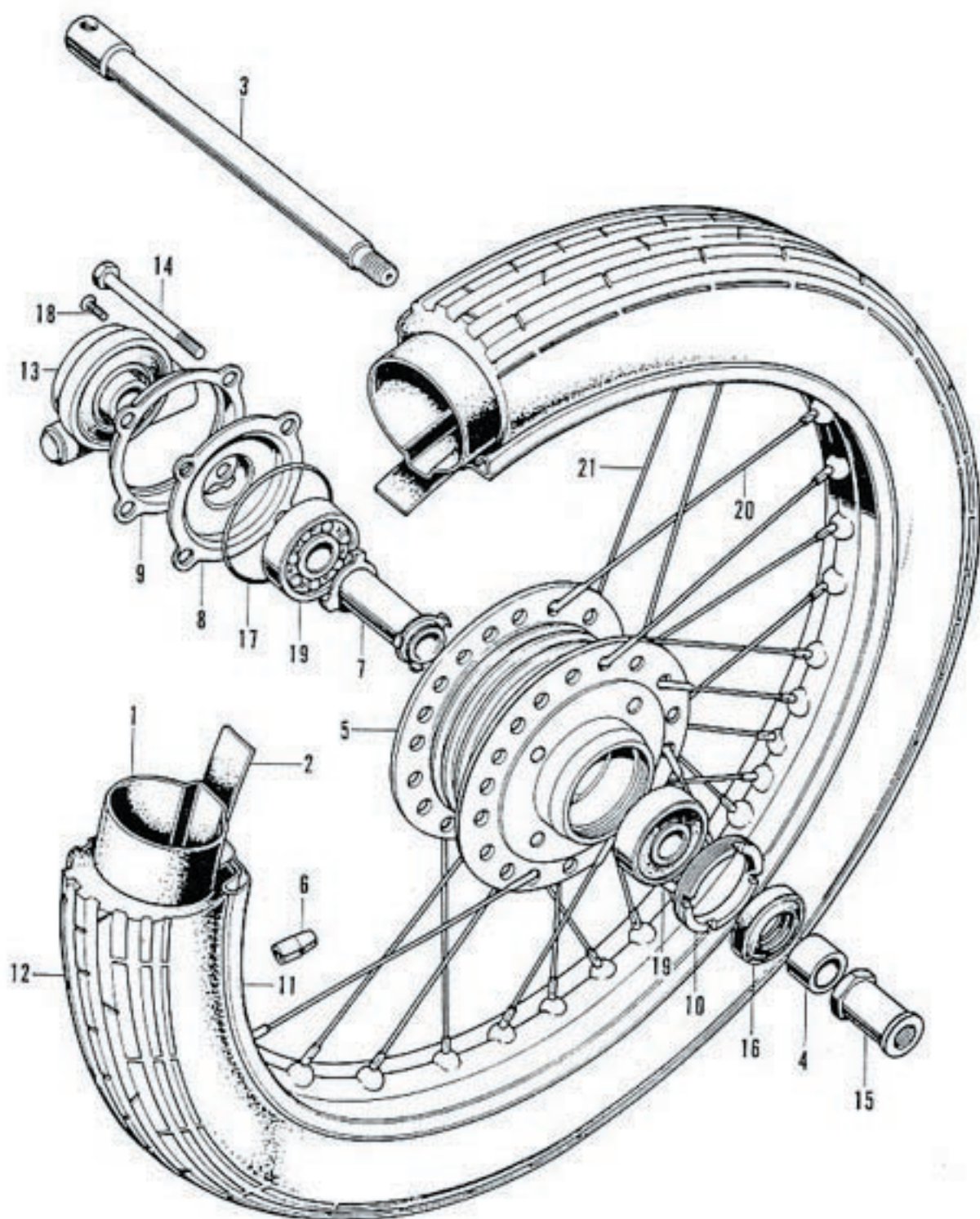
# F-6 Front Brake Caliper - Disk



# F-6 Front Brake Caliper - Disk

Ref. No.	Part No.	Description	Reqd. No. CB350F	Remarks
1	45100-323-043	CALIPER ASSY. (TOKIKO).....	1	
2	45101-323-013	CALIPER A .....	1	
3	45102-323-003	CALIPER B.....	1	
4	45104-317-700	JOINT, caliper holder .....	1	
5	45105-323-036	PAD COMP. A .....	1	
6	45106-323-006	(Superseded by 45106-323-013) .....	1	
	45106-323-013	PAD COMP. B (TOKIKO) .....	1	
7	45107-323-020	PISTON COMP. ....	1	
8	45108-300-003	SEAL, piston .....	1	
9	45115-323-010	HOLDER, caliper .....	1	
10	45116-323-010	(Superseded by 45116-323-020) .....	1	
O	45116-323-020	PIN, caliper holder .....	1	
11	45117-300-020	BOLT, caliper adjust.....	1	
12	45119-333-000	SPRING, caliper adjust .....	1	
13	45120-317-701	DISK COMP., front brake .....	1	
14	45140-333-000	COVER COMP., disk .....	1	
15	45224-579-013	VALVE, bleeder.....	1	
16	45225-579-013	CAP, bleeder .....	1	
17	90165-323-000	BOLT, caliper setting .....	2	
18	90522-317-700	WASHER, tongued, 8 mm .....	2	
19	91259-333-000	O-RING, 9.5×1.7 .....	2	
20	92200-06028	BOLT, hex., 6×28.....	2	
21	92700-06045	BOLT, stud, 8×45.....	1	
22	94001-06000	NUT, hex., 6 mm .....	1	
23	94001-08000-0S	NUT, hex., 8 mm .....	5	
24	94101-06000	WASHER, plain, 6 mm .....	2	
25	94102-10000	WASHER, plain, 10 mm .....	2	
26	94111-06000	WASHER, spring, 6 mm .....	2	
27	94111-08000	WASHER, spring, 8 mm .....	1	
28	94201-16220	PIN, split, 1.6×22 .....	1	

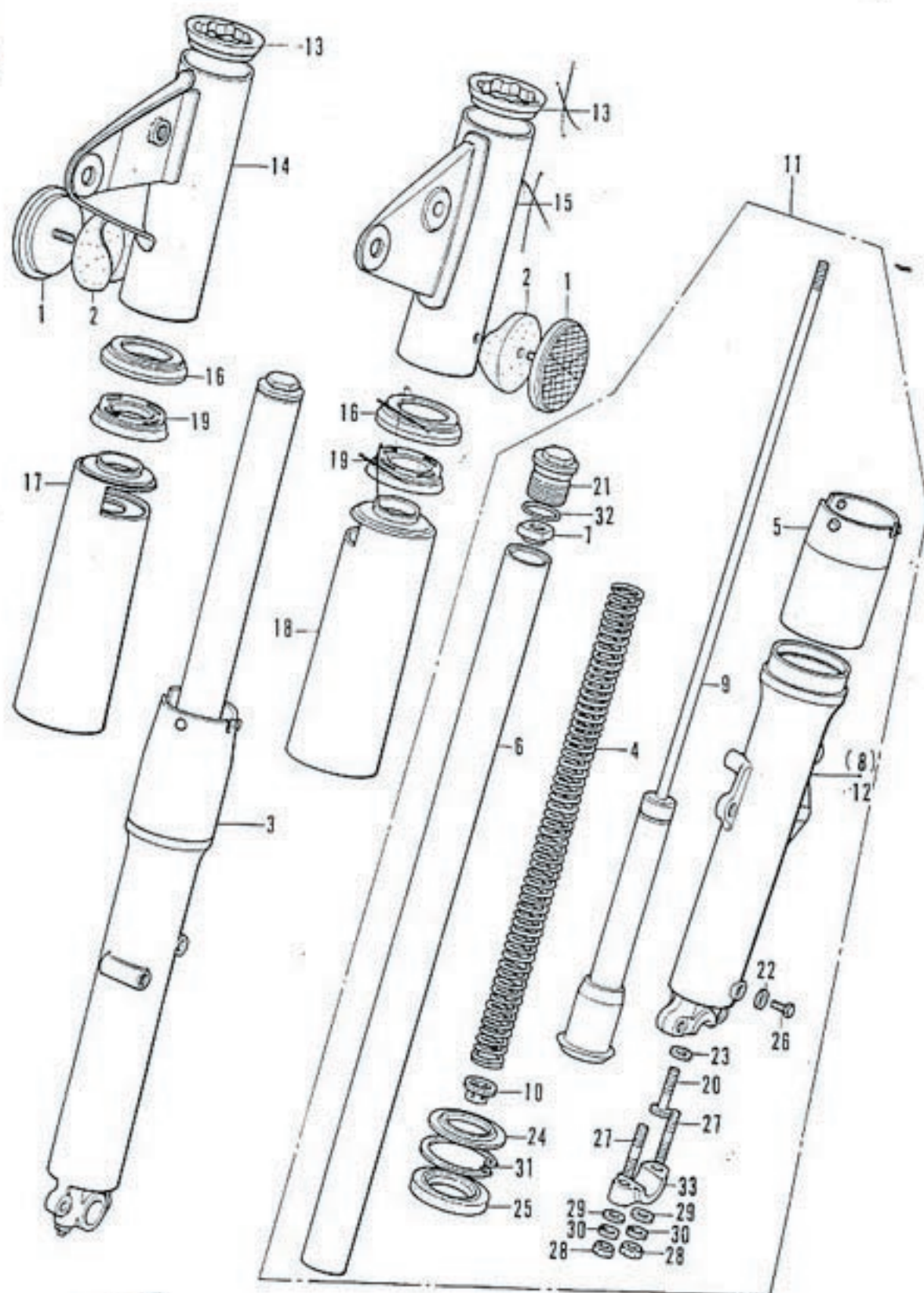
# F-7 Front Wheel



# F-7 Front Wheel

Ref. No.	Part No.	Description	Reqd. No. CB350F	Remarks
1	42712-268-000	TUBE, rear wheel (3.00-18) .....	1	
2	42713-268-000	FLAP, rear tire (18") .....	1	
3	44301-312-000	AXLE, front wheel .....	1	
4	44311-300-000	COLLAR, wheel side .....	1	
5	44601-317-702	HUB, front wheel .....	1	
6	44606-283-000	BALANCER, wheel (20g) .....	(0~3)	
	44607-283-000	BALANCER, wheel (15g) .....	(0~3)	
	44608-283-000	BALANCER, wheel (10g) .....	(0~3)	
	44609-283-000	BALANCER, wheel ( 5g) .....	(0~3)	
7	44820-317-701	COLLAR, front axle distance.....	1	
8	44641-333-000	RETAINER COMP., gear box .....	1	
9	44642-317-701	COVER, gear box retainer.....	1	
10	44643-300-000	RETAINER, front wheel bearing.....	1	
11	44701-317-701	RIM, front wheel (18").....	1	
12	44711-333-003	TIRE, front wheel (3.00-18) (BRIDGESTON) .....	1	
13	44800-317-700	GEAR BOX, speedometer .....	1	
14	90122-317-702	BOLT, 8x90 .....	4	
15	90305-333-000	NUT, front wheel axle.....	1	
16	91252-300-003	DUST-SEAL, 22x36x8 .....	1	
17	91302-317-700	O-RING, retainer .....	1	
18	93700-05016-0A	SCREW, oval, 5x16.....	1	
19	96140-63020-10	BEARING, radial ball, 6302U .....	2	
20	97311-69233-10	SPOKE, BS 8x196.5 (Inside).....	18	
21	97716-69232-10	SPOKE, BS 8x196 (Outside).....	18	

## F-8 Front Cushion



# F-8 Front Cushion

Ref. No.	Part No.	Description	Reqd. No. CB350F	Remarks
1	33741-340-670	REFLECTOR, front reflex .....	2	
2	33743-341-670	BASE, front reflex reflector .....	2	
3	51400-333-000	FORK ASSY., right front .....	1	
4	51401-333-000	SPRING, front cushion .....	2	
5	51402-333-000	COVER, bottom case .....	2	
6	51410-317-700	PIPE, front fork .....	2	
7	51413-317-700	NUT, lock .....	2	
8	51421-333-000	CASE, right front fork bottom .....	1	
9	51430-333-000	DAMPER COMP. ....	2	
10	51461-317-701	SEAT, cushion spring .....	2	
11	51500-333-000	FORK ASSY., left front .....	1	
12	51521-333-000	CASE, left front fork bottom .....	1	
13	51601-317-700	CUSHION A, fork cover .....	2	
14	51602-333-000LY	COVER, right front fork (Candy bacchus olive custom)	1	
	51602-333-000NQ	COVER, right front fork (Custom silver metallic)	1	
	51602-333-000PJ	COVER, right front fork (Flake matador red) <i>Rello</i>	1	
15	51606-333-000LY	COVER, left front fork (Candy bacchus olive custom)	1	
	51606-333-000NQ	COVER, left front fork (Custom silver metallic) <i>Rello</i>	1	
	51606-333-000PJ	COVER, left front fork (Flake matador red) <i>Rello</i>	1	
16	51608-286-010	RIB, front fork .....	2	
17	51611-344-670LY	COVER, front fork under (Candy bacchus olive custom)	1	
	51611-344-670NQ	COVER, front fork under (Custom silver metallic)	1	
	51611-344-670PJ	COVER, front fork under (Flake matador red) ...	1	
18	51612-333-000LY	COVER, left front fork under (Candy bacchus olive custom)	1	
	51612-333-000NQ	COVER, left front fork under (Custom silver metallic)	1	
	51612-333-000PJ	COVER, left front fork under (Flake matador red)	1	
19	51622-286-010	CUSHION B, front fork cover .....	2	
20	90116-283-010	BOLT, socket, 8 mm .....	2	

# F-8 Front Cushion

