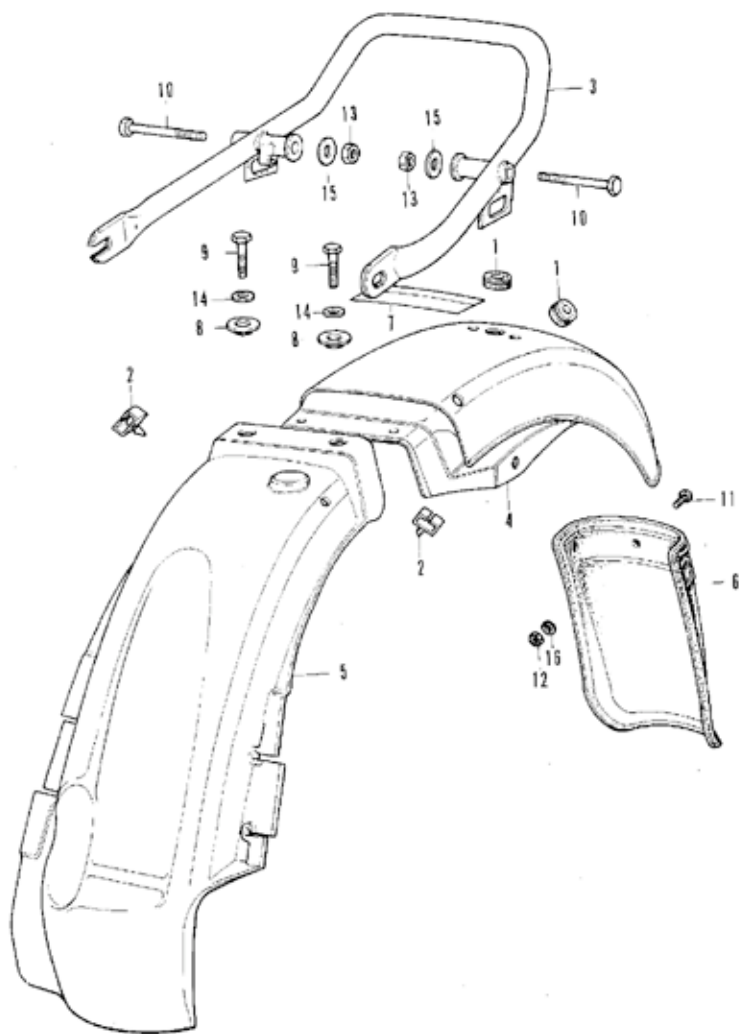


# F-19 Chain Case - Rear Fork

Ref. No.	Part No.	Description	Req. No. CB250F	Serial No.	Export Area
1	4C517-333-000	CASE, DRIVE CHAIN	1		
2	4C514-333-000	PLUG, CHAIN CASE	1		
3	4C530-333-003	CHAIN, DRIVE (D1C50DS-96L) (DAICD)	1		
	4C530-333-005	CHAIN, DRIVE (RK5CS-96L) (AKASAGO)	1		
4	4C531-333-003	JOINT, DRIVE CHAIN (D1C50DS) (DAICD)	1		
	4C531-333-005	JOINT, DRIVE CHAIN (RK5CS) (AKASAGO)	1		
5	4C543-312-010	ADJUSTER, DRIVE CHAIN	1		
6	4C548-268-000	BUSH, REAR CUSHION UNDER RUBBER	1		
7	43431-333-000	ARM, REAR BRAKE STOPPER	1		
8	52100-333-000F	FORK COMP., REAR	1		
9	52108-333-003	BUSH, REAR FORK PIVOT	2		
10	52109-283-300	BUSH, REAR FORK PIVOT THRUST	2	1074187	
	52108-457-300	BUSH, REAR FORK PIVOT	2	1074188	
11	52136-333-000	STOPPER, CHAIN ADJUSTER	2		
12	52141-333-000	COLLAR, REAR FORK CENTER	1		
13	52144-283-010	CAP, REAR FORK DUST SEAL	2	1074187	
	52144-362-000	CAP, REAR FORK DUST SEAL	2	1074188	
14	52145-283-000	RING, REAR FORK FELT	2	1074187	
15	P7504-C2P-670	MARK, MUFFLER CAUTION	1		A
16	5C119-283-000	BOLT, CHAIN ADJUSTING	2		
17	5C121-292-000	BOLT, REAR FORK PIVOT	1		
18	5C133-286-000	BOLT, REAR BRAKE STOPPER ARM	1		
19	5C307-283-000	NUT, CHAIN ADJUSTING	2		
20	50354-268-000	NUT, SELF LOCK, LAMP	1		
21	5C526-216-000	WASHER, 14X26	1		
22	52006-C6C12	BOLT, HEX., 6X12	2		
23	54001-C6C00-05	NUT, HEX., 8MM	1		
24	54101-C6C00	WASHER, PLAIN, 6MM	2		
25	54101-C8C00	WASHER, PLAIN, 8MM	1		
26	54111-1CC00	WASHER, SPRING, 10MM	1		
27	54201-20150	PIN, SPLIT, 2.0X15	1		
28	56201-3CC01	NIPPLE, GREASE, #.45	1		



## F-20 Rear Fender

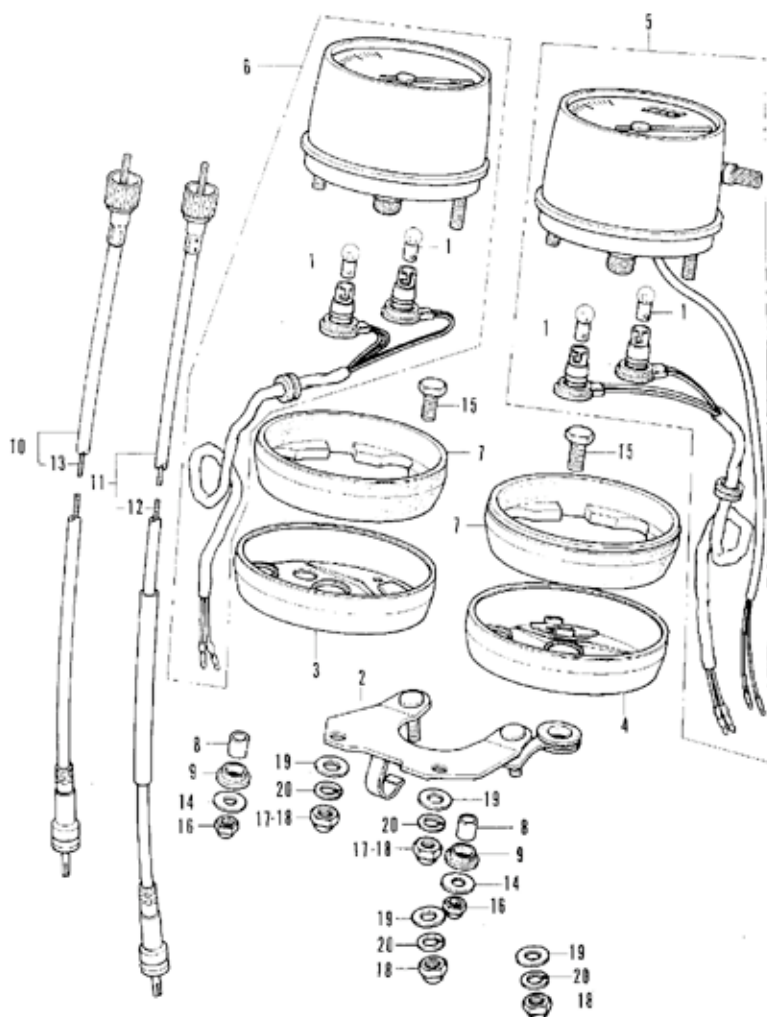


# F-20 Rear Fender

Ref. No.	Part No.	Description	Reqd. No. CB350F	Serial No.	Export Area
1	32983-011-000	CROMMET, WIRE COND	2		
2	32985-300-000	CROMMET, WIRE COND	2		
3	50400-333-000	PIPE, REAR	1		A, D, F, I, IT
	50400-333-610	PIPE, REAR	1		G
4	60100-333-000XW	FENDER COMP., REAR	1		A, D, F
	60100-333-610XW	FENDER COMP., REAR	1		G
	60100-333-730XW	FENDER COMP., REAR	1		F, D, IT
5	60105-333-000	FENDER H ASSY., REAR	1		
6	60121-317-731	MUDGUARD, REAR FENDER	1		F, D, IT
7	67507-333-610	MARK, TIRE CAUTION	1		G
	67507-333-670	MARK, TIRE CAUTION	1		A
	67507-333-680	MARK, TIRE CAUTION	1		D, F, D, F, IT
8	50512-300-000	WASHER, 6X20	2		
9	57000-C6020	BOLT, HEX., 6X20	2		
10	53000-C8065-08	BOLT, HEX., 6X65	2		
11	53500-06020-49	SCREW, PAN, 6X20	3		F, D, IT
12	54001-06000	NUT, HEX., 6MM	2		F, D, IT
13	54001-08000-05	NUT, HEX., 8MM	2		
14	54101-06000	WASHER, PLAIN, 6MM	2		
15	54101-08000	WASHER, PLAIN, 8MM	2		
16	54111-06000	WASHER, SPRING, 6MM	3		F, D, IT



# F-21 Speedometer • Tachometer



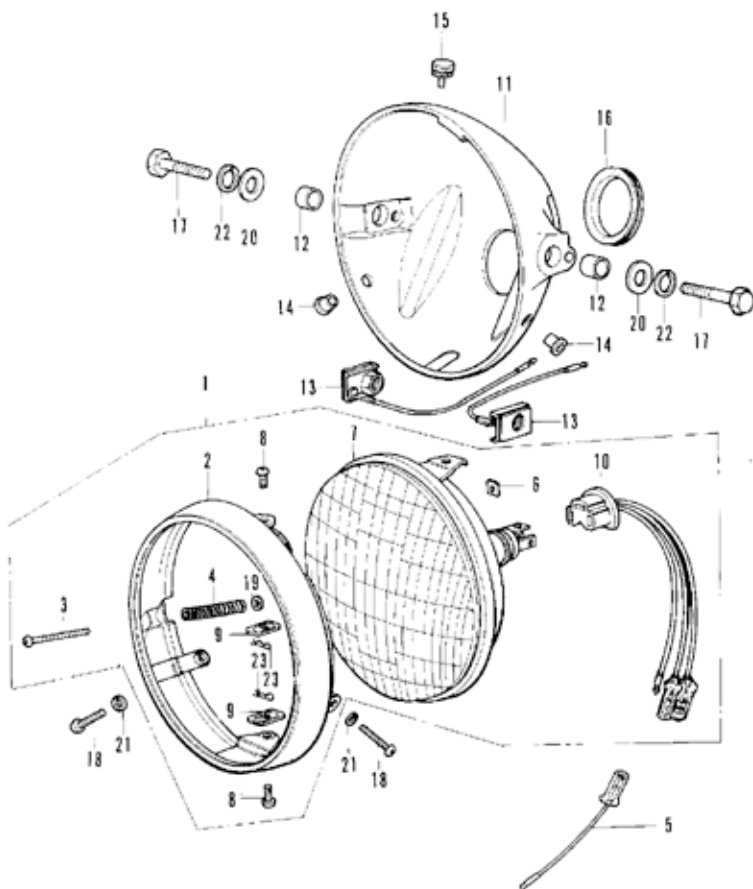
B 333 36

# F-21 Speedometer • Tachometer

Ref. No.	Part No.	Description	Reqd. No. CH350F	Serial No.	Export Area
1	34902-259-000	BULB, DASH (12V 3A)	4		
2	37211-333-000	BRACKET, METER (MIRROR SIDE)	1		
3	37212-333-000	RING, RIGHT METER SET	1	1013951 A	
	37212-455-000	RING, RIGHT METER SET	1	1013952	A D, E, F, G, H
4	37213-333-000	RING, LEFT METER SET	1	1013951 A	
	37213-455-000	RING, LEFT METER SET	1	1013952	A D, E, F, G, H
5	37230-333-672	SPEEDOMETER ASSY.	1		A, D
	37230-333-680	METER ASSY., SPEED (KM)	1		D, E, F, G, H
6	37240-333-000	TACHOMETER ASSY.	1		
7	37242-323-701	CUSHION, METER	2		
8	37243-323-000	COLLAR, METER SET	4	1013951 A	
	37243-457-000	COLLAR, METER SET	4	1013952	A D, E, F, G, H
9	37244-307-670	RUBBER, METER SET	4		
10	37260-333-000	CABLE ASSY., TACHOMETER	1		
11	44830-323-000	CABLE ASSY., SPEEDOMETER	1		
12	44831-323-000	CABLE, SPEEDOMETER INNER	1		
13	44831-333-000	CABLE, SPEEDOMETER INNER	1		
14	50525-030-000	WASHER B, HANDLE HOLDER	4	1013951 A	
		SETTING			
	50500-455-000	WASHER, METER MOUNT, 19MM	4	1013952	A D, E, F, G, H
15	92000-08020-0A	BOLT, HEX., M20	2	1055093 A	
	92000-08016-0A	BOLT, HEX., M16	2	1055094	A D, E, F, G, H
16	94021-06020	NUT, HEX. CAP, 6MM	4		
17	94021-08000-0S	NUT, HEX. CAP, 8MM	2	1055094	A, D, E, F, G, H
18	94021-08020-0S	NUT, CAP, 8MM	2	1055094	A
	/ 1055093 (4)		2	1055094	D, E, F, G, H
	/ 1055093 (4)		2		H
19	94101-08000	WASHER, PLAIN, 8MM	4		
20	94111-06000	WASHER, SPRING, 6MM	4		



# F-22 Head Light - Case (Used in A & D)



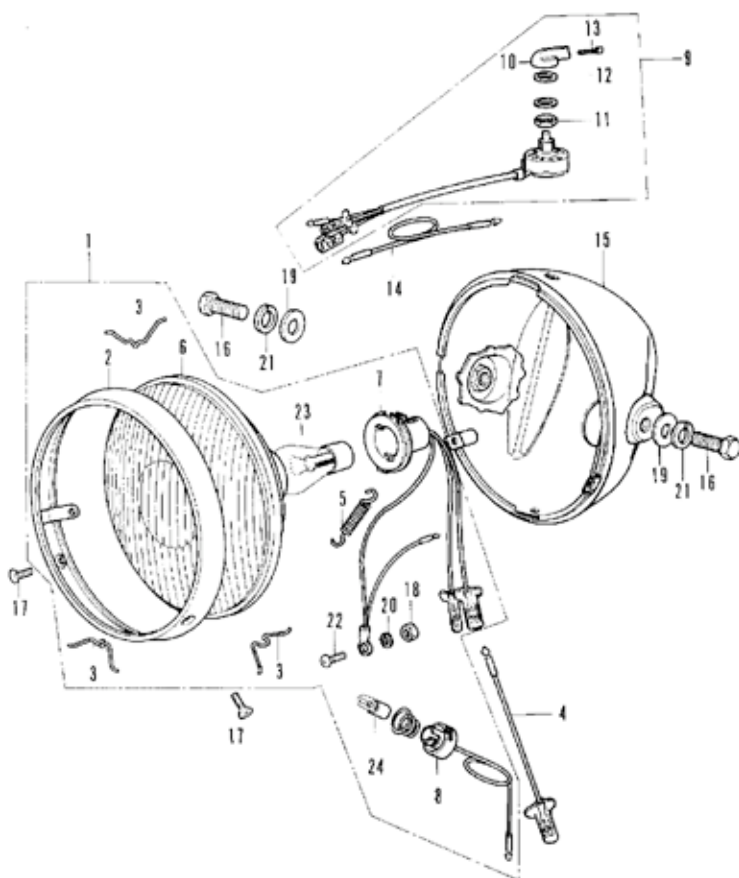
B333-37

# F-22 Head Light - Case (Used in A & D)

Ref. No.	Part No.	Description	Reqd. No. CB350F	Serial No.	Export Area
1	33100-333-671	LIGHT ASSY., HEAD	1		A+D
2	33101-333-670	REP., HEAD LIGHT	1		A+D
3	33103-333-000	SCREW, BEAM ADJUST, 4MM	1		A+D
4	33107-332-000	SPRING, HEAD LIGHT BEAM ADJUSTING	1		A+D
5	33109-333-680	GORD, HEAD LIGHT SW	1		D
6	33117-292-003	NUT, BEAM ADJUST (STANLEY)	1		A+D
7	33120-333-670	LIGHT UNIT, HEAD (12V 50/35W)	1		A+D
8	33125-087-761	SCREW, UNIT HOLDER	2		A+D
9	33129-200-033	NUT, UNIT HOLDER	2		A+D
10	33130-333-000	SOCKET COMP., HEAD LIGHT	1		A+D
11	41301-333-003B	CASE, HEAD LIGHT	1		A+D
12	41302-292-000	COLLAR, HEAD LIGHT CASE	2		A+D
13	41303-336-000	WASHER, HEAD LIGHT CASE	2		A+D
14	41304-292-000	COLLAR, HEAD LIGHT SETTING	2		A+D
15	41305-333-010	GROMMET, HEAD LIGHT CASE	1		A+D
16	41306-333-003	GROMMET, HEAD LIGHT CASE	1		A+D
17	92000-10032-08	BOLT, HEX., 10X32	2		A+D
18	93500-05016-08	SCREW, PAN, 5X16	2		A+D
19	94101-04000	WASHER, PLAIN, 4MM	1		A+D
20	94101-10000	WASHER, PLAIN, 10MM	2		A+D
21	94111-05200	WASHER, SPRING, 5MM	2		A+D
22	94111-10000	WASHER, SPRING, 10MM	2		A+D
23	94251-05000	PIN, LOCK, 5MM	2		A+D



# F-22-1 Head Light - Case (Used in ED,G & IT)



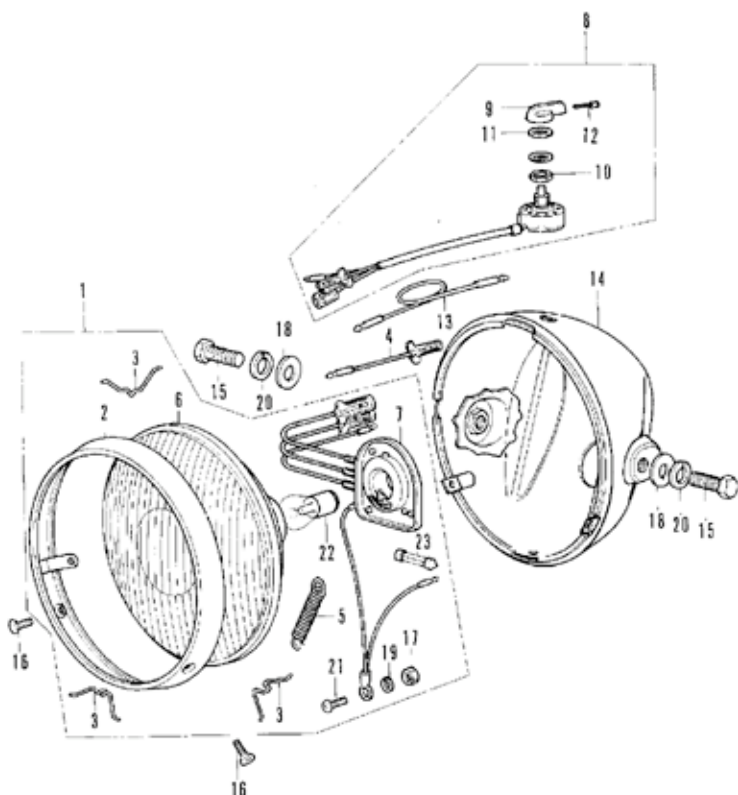


# F-22-1 Head Light - Case (Used in ED,G & IT)

Ref. No.	Part No.	Description	Reqd. No. CB3507	Serial No.	Export Area
1	33100-286-611	LIGHT ASSY., HEAD (12V 35/35W 4W)	1		FD,G,IT
2	33101-283-601	RM. HEAD LIGHT	1		FD,G,IT
3	33108-268-000	SPRING, HEAD LIGHT LENS SET	3		ED,G,IT
4	33109-333-680	CORC, HEAD LIGHT SUB	1		FD,G,IT
5	33115-283-601	SPRING, SOCKET HOLDER	1		FD,G,IT
6	33120-283-601	LIGHT UNIT, HEAD	1		ED,G,IT
7	33130-286-611	SOCKET, HEAD LIGHT	1		FD,G,IT
8	33170-286-611	SOCKET, PARKING LIGHT	1		ED,G,IT
9	35150-333-620	SWITCH ASSY., LIGHTING	1		FD,G,IT
10	35151-292-751	KNOP, LIGHTING SWITCH	1		FD,G,IT
11	35152-268-000	NUF, LIGHTING SWITCH	1		FD,G,IT
12	35153-268-000	WASHER, LIGHTING SWITCH	1		ED,G,IT
13	35154-268-000	SCREW, LIGHTING SWITCH SET	1		ED,G,IT
14	35303-333-610	CORC, LIGHTING SWITCH SUB	1		ED,G,IT
15	61301-333-610B	CASE, HEAD LIGHT	1		ED,G,IT
16	52000-10020-00	BOLT, HEX., 10X20	2		FD,G,IT
17	53700-05C10-00	SCREW, OVAL, 5X10	2		ED,G,IT
18	54001-03000-05	NUT, HEX., 3MM	1		ED,G,IT
19	54101-10000	WASHER, PLAIN, 10MM	2		FD,G,IT
20	54111-03000	WASHER, SPRING, 3MM	1		FD,G,IT
21	54111-10000	WASHER, SPRING, 10MM	2		ED,G,IT
22	54500-03006-0A	SCREW, SLOTTER, 3X6	1	107C099	FD,G,IT
	54500-03006-0H	SCREW, PAN, 3X6	1	107C100	ED,G,IT
23		BULB, HEAD LIGHT (LOCAL PROCUREMENT)	1		ED,G,IT
24		BULB, DASH (LOCAL PROCUREMENT)	1		ED,G,IT



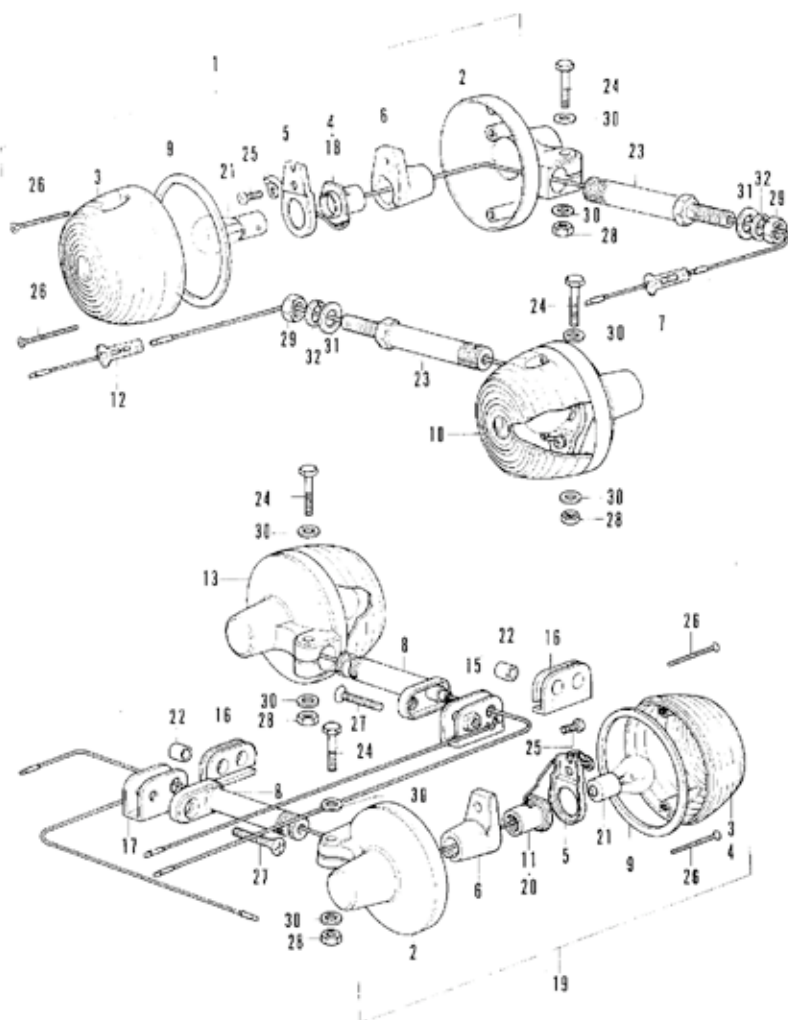
# F-22-2 Head Light - Case (Used in F)



# F-22-2 Head Light - Case (Used in F)

Ref. No.	Part No.	Description	Req. No. CB344F	Serial No.	Export Area
1	33100-286-622	LIGHT ASSY., HEAD (12V 36/36W)	1		F
2	33101-286-621	RIM, HEAD LIGHT	1		F
3	33108-268-000	SPRING, HEAD LIGHT LENS SET	3		F
4	33109-333-680	CORR., HEAD LIGHT SUB	1		F
5	33115-286-621	SPRING, SOCKET HOLDER	1		F
6	33120-286-621	LIGHT UNIT, HEAD	1		F
7	33130-286-622	SOCKET, HEAD LIGHT	1		F
8	35150-333-620	SWITCH ASSY., LIGHTING	1		F
9	35151-292-751	KNOB, LIGHTING SWITCH	1		F
10	35152-268-000	NUT, LIGHTING SWITCH	1		F
11	35153-268-000	WASHER, LIGHTING SWITCH	1		F
12	35154-268-000	SCREW, LIGHTING SWITCH SET	1		F
13	35303-333-610	CORR., LIGHTING SWITCH SUB	1		F
14	61301-333-610B	CASE, HEAD LIGHT	1		F
15	62000-10020-08	BOLT, HEX., 10X20	2		F
16	63700-05010-08	SCREW, OVAL, 5X10	2		F
17	64001-03000-05	NUT, HEX., 3MM	1		F
18	64101-10000	WASHER, PLAIN, 10MM	2		F
19	64111-03000	WASHER, SPRING, 2MM	1		F
20	64111-10000	WASHER, SPRING, 10MM	2		F
21	69500-03006-0A	SCREW, SLOTTED, 2X6	1	1070099	F
	69500-03006-0H	SCREW, PAN, 3X6	1	1070100	F
22		BULB, HEAD LIGHT (LOCAL PROCUREMENT)	1		F
23		BULB, PARKING LIGHT (LOCAL PROCUREMENT)	1		F

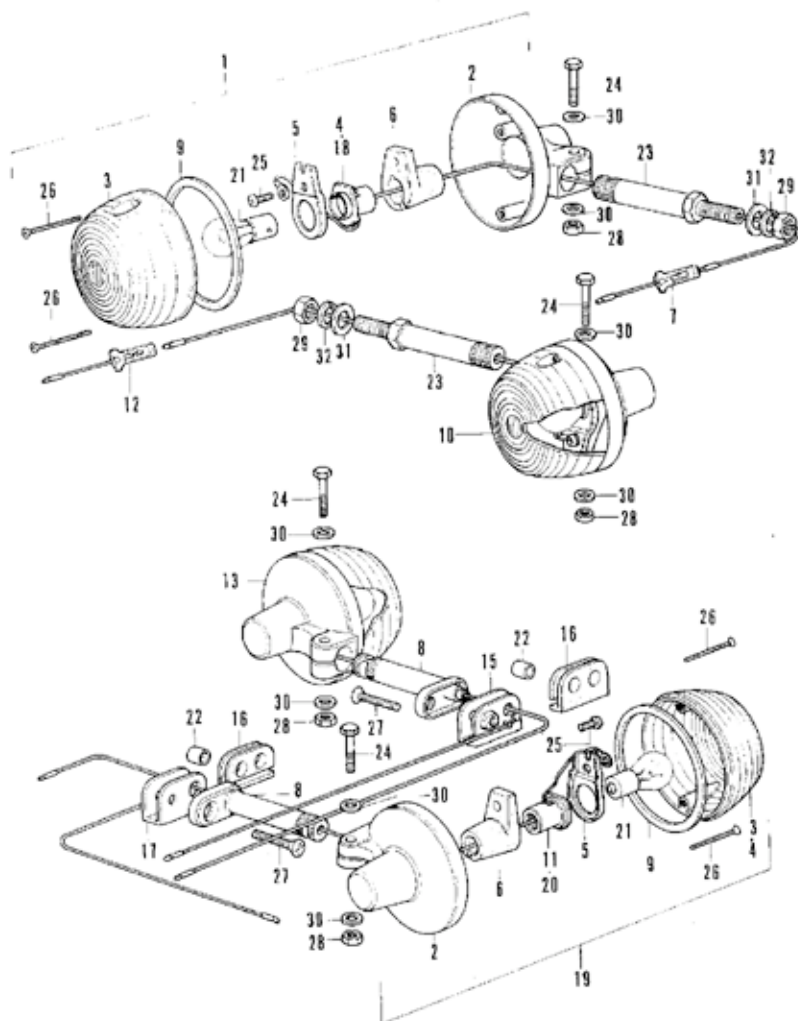
# F-23 Turn Signal (Used in A,D,ED,F & IT)



# F-23 Turn Signal (Used in A,D,ED,F & IT)

Ref. No.	Part No.	Description	Reqd. No. CB350F	Serial No.	Export Area
1	33400-292-670	LIGHT ASSY., RIGHT FRONT TURN SIGNAL	1	1040853	A
	33400-292-003	LIGHT ASSY., RIGHT FRONT TURN SIGNAL	1		F
	33400-317-730	LIGHT ASSY., RIGHT FRONT TURN SIGNAL	1		ED, IT
	33600-306-670	LIGHT ASSY., RIGHT REAR TURN SIGNAL	1	1040854	A
2	33401-292-003	BASE, RIGHT FRONT TURN SIGNAL	4		A, D, ED, F, IT
2	33402-268-671	LENS, FRONT TURN SIGNAL	4		A, D, F, ED, IT
4	33407-292-003	SOCKET, RIGHT FRONT TURN SIGNAL	1	1040853	A
	33610-306-670	SOCKET COMP., RIGHT REAR TURN SIGNAL	1	1040854	A
6	33407-284-000	HOLDER, TURN SIGNAL SOCKET	4		A, D, ED, F, IT
6	33408-284-000	RUBBER, TURN SIGNAL CUSHION 33408-341-701	4	1072359	A, D, ED, F, IT
	33408-341-701	RUBBER, TURN SIGNAL CUSHION	4	1072360	A, D, ED, F, IT
7	33410-292-000	CORR, FRONT TURN SIGNAL SUP	1	1040853	A
8	33441-333-000	STAY, REAR TURN SIGNAL	2	1040853	A
	33441-455-670	STAY, REAR TURN SIGNAL	2	1040854	A
9	33443-268-671	PACKING, FRONT TURN SIGNAL LENS	4		A, D, ED, F, IT
10	33450-292-670	LIGHT ASSY., LEFT FRONT TURN SIGNAL	1	1040853	A
	33450-292-003	LIGHT ASSY., LEFT FRONT TURN SIGNAL	1		F
	33450-317-730	LIGHT ASSY., LEFT FRONT TURN SIGNAL	1		ED, IT
	33650-306-670	LIGHT ASSY., LEFT FRONT TURN SIGNAL	2	1040854	A
11	33453-292-003	SOCKET COMP., LEFT TURN SIGNAL	1	1040853	A
	33660-306-670	SOCKET, LEFT REAR TURN SIGNAL	2	1040854	A
12	33660-292-650	CORR, FRONT TURN SIGNAL SUP	1	1040853	A
13	33600-300-000	LIGHT ASSY., RIGHT REAR TURN SIGNAL	1		A, D
	33600-333-620	LIGHT ASSY., RIGHT REAR TURN SIGNAL	1		F
	33600-333-730	LIGHT ASSY., RIGHT REAR TURN SIGNAL	1		ED, IT
14	33602-323-631	LENS, REAR TURN SIGNAL	2		ED, IT

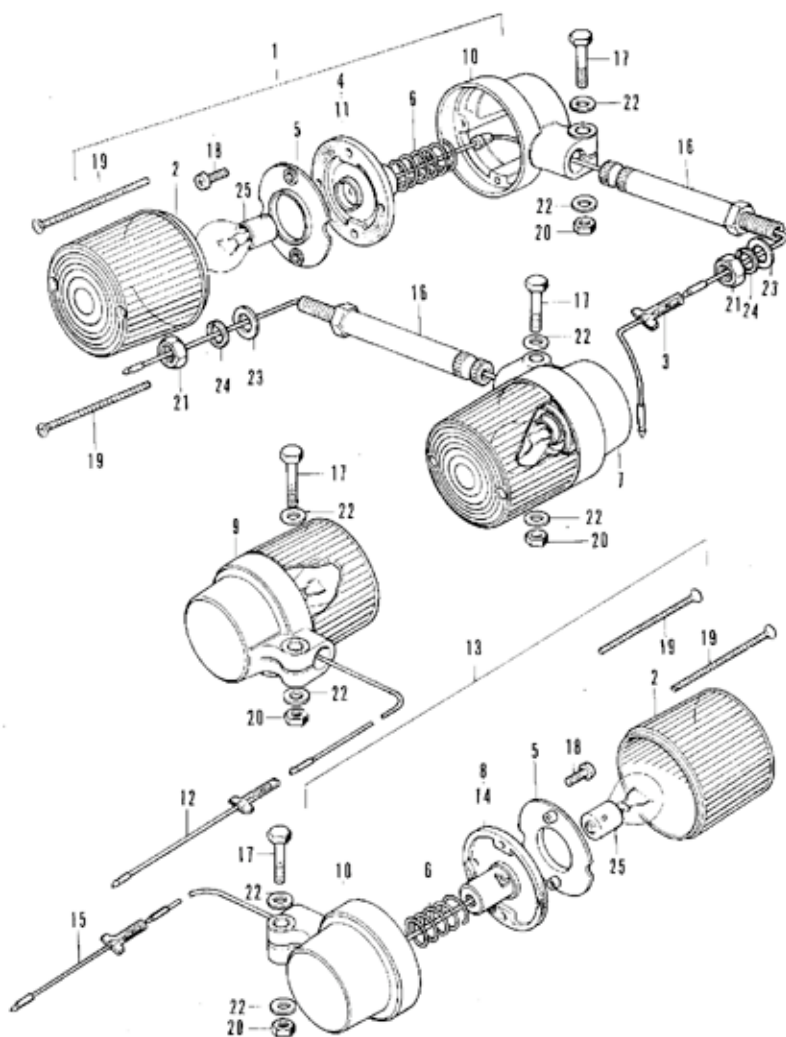
# F-23 Turn Signal (Used in A,D,ED,F & IT)



# F-23 Turn Signal (Used in A,D,ED,F & IT)

Ref. No.	Part No.	Description	Regd. No. CD350P	Serial No.	Export Area
15	33605-313-000	STOPPER, RIGHT REAR TURN SIGNAL	1		A,D,ED,F,IT
16	33606-074-010	BURRER, REAR TURN SIGNAL MOUNT	2		A,D,ED,F,IT
17	33609-332-000	STOPPER, LEFT REAR TURN SIGNAL	1		A,D,ED,F,IT
18	33610-300-000	SOCKET COMP., RIGHT REAR TURN SIGNAL	1		A,D,ED,F,IT
19	33650-313-000	LIGHT ASSY., LEFT REAR TURN SIGNAL	2	1040853	A
	33651-313-620	LIGHT ASSY., LEFT REAR TURN SIGNAL	1		IT
	33652-313-730	LIGHT ASSY., LEFT REAR TURN SIGNAL	1		F,IT
20	33660-313-003	SOCKET, LEFT REAR TURN SIGNAL	1	1040853	A,D,ED,F,IT
21	34905-248-871	BULB, TURN SIGNAL (12V 25W)	4		A,D
	34906-244-000	BULB, TURN SIGNAL (12V 10W)	4		IT
22	PC108-061-010	COLLAR & REAR FENDER	2		A,D,ED,F,IT
23	50154-260-670	BOLT, LIGHT CASE SETTING	2	1040853	A,D,F
	50154-346-610	BOLT, FRONT TURN SIGNAL SETTING	2		F,IT
	50154-645-670	BOLT, FRONT TURN SIGNAL SETTING	2	1040854	A
24	50007-06023-02	BOLT, HEX., 4X23	4		A,D,ED,F,IT
25	50500-07008-04	SCREW, PAN, 5X8	4		A,D,ED,F,IT
26	52700-04025-04	SCREW, HEX., 4X25	4		A,D,ED,F,IT
27	52700-04025-02	SCREW, HEX., 4X25	2		A,D,ED,F,IT
28	54001-04000	NUT, HEX., 6MM	4		A,D,ED,F,IT
29	54001-10000-05	NUT, HEX., 10MM	4		A,D,ED,F,IT
30	54101-04000	WASHER, PLATE, 6MM	4		A,D,ED,F,IT
31	54101-10000	WASHER, PLATE, 10MM	4		A,D,ED,F,IT
32	54111-10000	WASHER, SPRING, 10MM	4		A,D,ED,F,IT

# F-23-1 Turn Signal (Used in G)

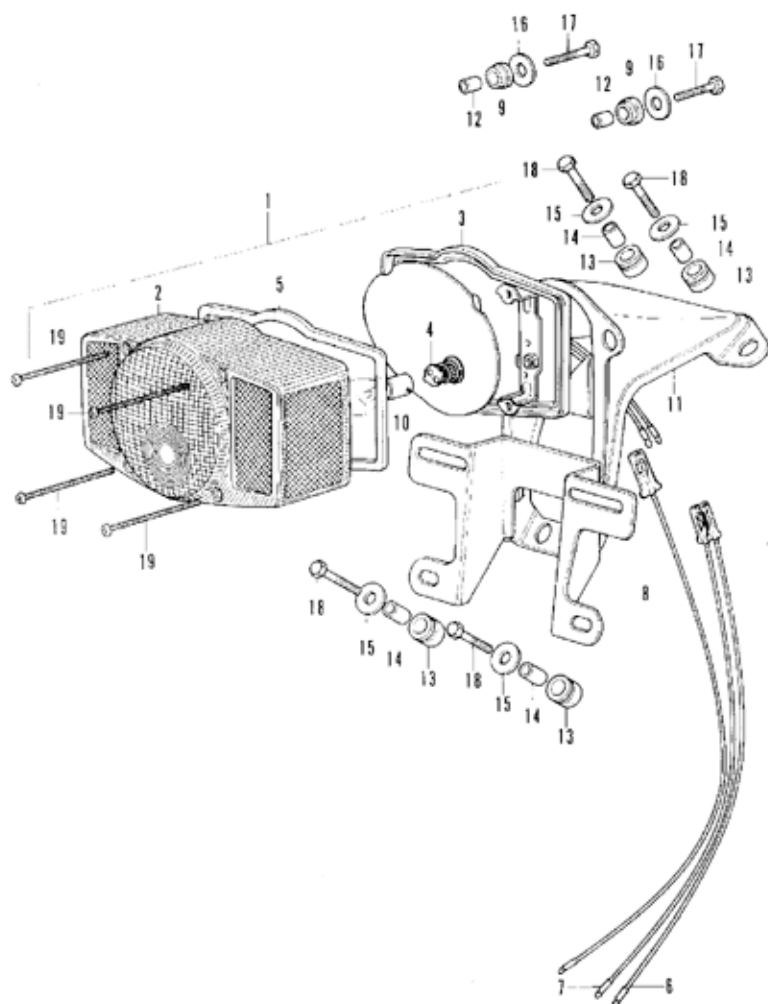




# F-23-1 Turn Signal (Used in G)

Ref. No.	Part No.	Description	Reqd. No. CR350F	Serial No.	Export Area
1	33400-292-611	LIGHT ASSY., RIGHT FRONT TURN SIGNAL	1	1034631	G
	33400-292-612	LIGHT ASSY., RIGHT FRONT TURN SIGNAL	1	1034632	G
2	33402-265-610	LENS, FRONT TURN SIGNAL	4		G
3	33410-292-000	CORR., FRONT TURN SIGNAL SW	1		G
4	33410-292-610	SOCKET, RIGHT FRONT TURN SIGNAL	1		G
5	33411-285-000	RING, TURN SIGNAL	4	1034631	G
	33403-285-010	RING, TURN SIGNAL	4	1034632	G
6	33413-255-000	SPRING, COIL	4		G
7	33450-292-611	LIGHT ASSY., LEFT FRONT TURN SIGNAL	1	1034631	G
	33450-292-612	LIGHT ASSY., LEFT FRONT TURN SIGNAL	1	1034632	G
8	33460-292-610	SOCKET ASSY., LEFT FRONT TURN SIGNAL	1		G
9	33600-292-610	LIGHT ASSY., RIGHT REAR TURN SIGNAL	1	1034631	G
	33600-292-611	LIGHT ASSY., RIGHT REAR TURN SIGNAL	1	1034632	G
10	33605-292-610	BASE, TURN SIGNAL	4		G
11	33610-292-610	SOCKET, RIGHT REAR TURN SIGNAL	1		G
12	33616-304-650	CORR., RIGHT TURN SIGNAL SW	1		G
13	33650-292-610	LIGHT ASSY., LEFT REAR TURN SIGNAL	1	1034631	G
	33650-292-611	LIGHT ASSY., LEFT REAR TURN SIGNAL	1	1034632	G
14	33660-292-610	SOCKET, LEFT REAR TURN SIGNAL	1		G
15	33666-304-650	CORR., LEFT REAR TURN SIGNAL SW	1		G
16	50156-34A-610	BOLT, FRONT TURN SIGNAL SETTING	2		G
17	52000-06028-02	BOLT, HEX., 6X28	4		G
18	93500-03010-04	SCREW, PAN., 3X10	8		G
19	53700-03048-04	SCREW, OVAL, 3X48	8		G
20	54001-06000	NUT, HEX., 6MM	4		G
21	54001-10000-05	NUT, HEX., 10MM	2		G
22	94101-06000	WASHER, PLAIN, 6MM	4		G
23	94101-10000	WASHER, PLAIN, 10MM	2		G
24	94111-10000	WASHER, SPRING, 10MM	2		G
25		BULB, TURN SIGNAL (LOCAL PROCUREMENT)	4		G

# F-24 Tail Light (Used in A & D)

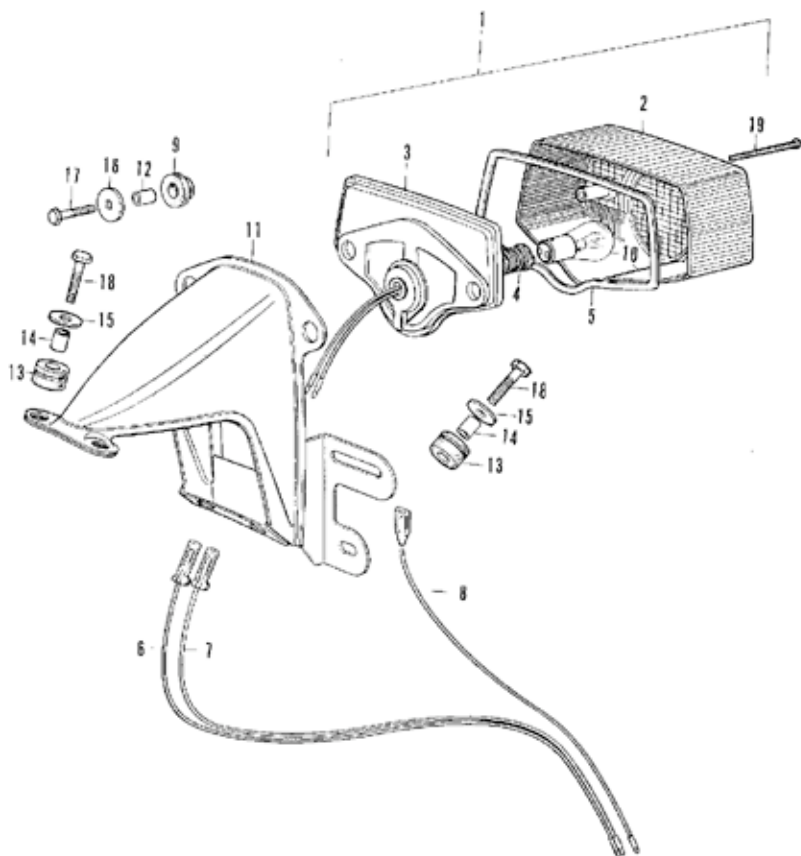


# F-24 Tail Light (Used in A & D)

Ref. No.	Part No.	Description	Reqd. No. CB350F	Serial No.	Export Area
1	33701-342-671	LIGHT UNIT, TAIL	1		A+D
2	33702-341-671	LENS, TAIL LIGHT	1		A+D
3	33703-342-671	BASE COMP., TAIL LIGHT	1		A+D
4	33708-341-671	CORD COMP., TAIL LIGHT	1		A+D
5	33709-341-671	PACKING, TAIL LIGHT LENS	1		A+D
6	33710-333-000	CORD, STOP LIGHT	1		A+D
7	33711-333-000	CORD, TAIL LIGHT SUB	1		A+C
8	33712-300-003	CORD, TAIL LIGHT FATH (STANLEY)	1		A+D
9	33719-077-671	PACKING B, TAIL LIGHT BASE	2		A+C
10	34906-313-671	BULB, TAIL & STOP LIGHT (12V 23/8W)	1		A+D
11	84701-341-670XW	BRACKET, NUMBER PLATE	1		A+D
12	84706-342-000	COLLAR, TAIL LIGHT UNIT	2		A+D
13	84905-333-000	RUBBER, CUSHION	4		A+D
14	84906-118-000	COLLAR, NUMBER BRACKET	4		A+D
15	90525-030-000	WASHER D, HANDLE HOLDER SETTING	4		A+D
16	90581-342-000	WASHER, 20MM	2		A+D
17	92000-05020-0A	BOLT, HEX., 5X20	2		A+D
18	92000-06025-02	BOLT, HEX., 6X25	4		A+D
19	93500-04055-0B	SCREW, PAN, 4X55	4		A+D



# F-24-1 Tail Light (Used in ED,F & IT)

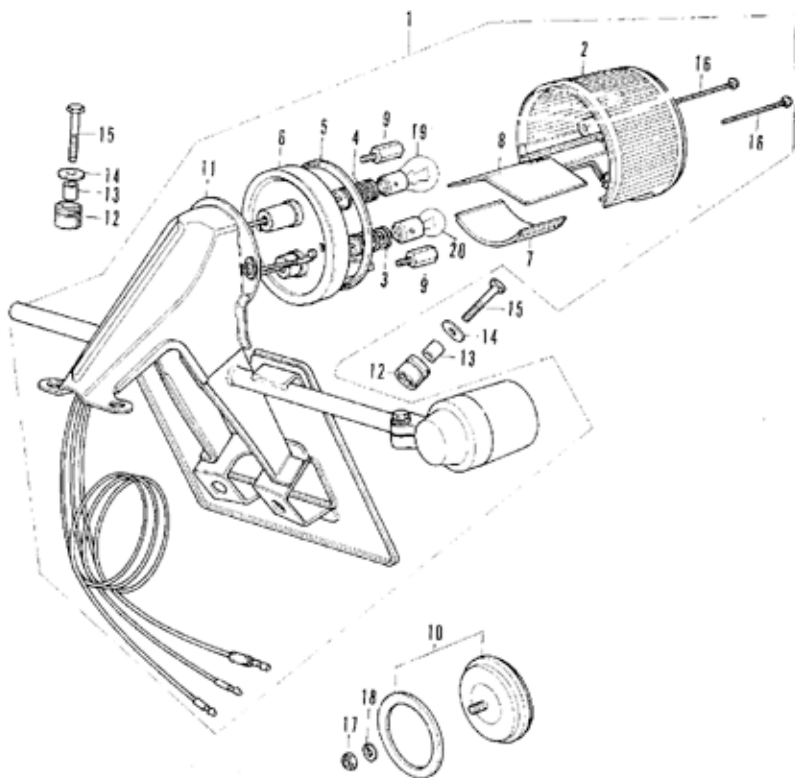


# F-24-1 Tail Light (Used in ED,F & IT)

Ref. No.	Part No.	Description	Reqd. No. CB350F	Serial No.	Export Area
1	33701-333-620	TAIL LIGHT UNIT	1		ED,F,IT
2	33702-323-603	LENS, TAIL LIGHT	1		ED,F,IT
3	33703-333-620	BASE, TAIL LIGHT	1		ED,F,IT
4	33709-077-671	CORN COMP., TAIL LIGHT	1		ED,F,IT
5	33709-077-671	PACKING, TAIL LIGHT LENS	1		ED,F,IT
6	33710-333-000	CORN, STOP LIGHT	1		ED,F,IT
7	33711-333-000	CORN, TAIL LIGHT SUB	1		ED,F,IT
8	33712-300-003	CORN, TAIL LIGHT EARTH (STANLEY)	1		ED,F,IT
9	33719-077-671	PACKING B, TAIL LIGHT BASE	2		ED,F,IT
10	34906-594-602	BULB, TAIL & STOP LIGHT (12V 21/5W)	1		ED,F,IT
11	84701-333-6208	BRACKET, NUMBER PLATE	1		ED,F,IT
12	84706-342-000	COLLAR, TAIL LIGHT UNIT	2		ED,F,IT
13	84905-333-000	RUBBER, CUSHION	4		ED,F,IT
14	84906-118-000	COLLAR, NUMBER BRACKET	4		ED,F,IT
15	90525-030-000	WASHER B, HANDLE FOLDER SETTING	4		ED,F,IT
16	90581-342-000	WASHER, 20MM	2		ED,F,IT
17	92000-05020-0A	BOLT, HEX., 5X20	2		ED,F,IT
18	92000-06025-02	BOLT, HEX., 6X25	4		ED,F,IT
19	93500-04050-4J	SCREW, PAN, 4X50	2		ED,F,IT



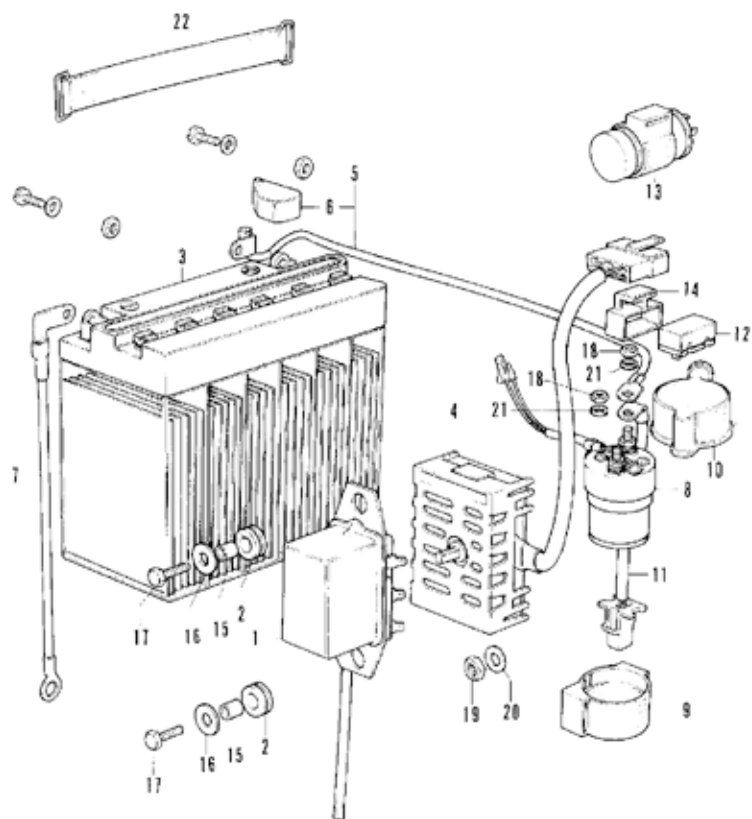
# F-24-2 Tail Light (Used in G)



## F-24-2 Tail Light (Used in G)

Ref. No.	Part No.	Description	Reqd. No. CB310F	Serial No.	Export Area
1	33700-292-610	TAIL LIGHT ASSY	1		G
2	33701-051-000	LENS, TAIL & STOP LAMP	1		G
3	33707-292-610	CORD COMP., TAIL LIGHT	1		G
4	33708-292-610	CORD, STOP LIGHT	1		G
5	33709-051-000	PACKING, TAIL LIGHT LENS	1		G
6	33710-292-610	SOCKET, TAIL LIGHT	1		G
7	33715-051-000	LENS, LICENSE	1		G
8	33716-051-000	PLATE, INTERCEPTION	1		G
9	33717-292-610	BOLT, TAIL LIGHT SETTING	2		G
10	33741-333-610	REFLECTOR, REFLEX	1		G
11	84701-292-610R	BRACKET, NUMBER PLATE	1		G
12	84905-333-000	RUBBER, CUSHION	4		G
13	84906-118-000	COLLAR, NUMBER BRACKET	4		G
14	90525-030-000	WASHER B, HANDLE HOLDER SETTING	4		G
15	92000-06025-02	BOLT, HEX., 6X25	4		G
16	93500-03045-08	SCREW, PAN, 3X45	2		G
17	94001-06000	NUT, HEX., 6MM	1		G
18	94111-06000	WASHER, SPRING, 6MM	1		G
19		BULB, TAIL LIGHT STOP (LOCAL PROCUREMENT)	1		G
20		BULB, TAIL (LOCAL PROCUREMENT)	1		G



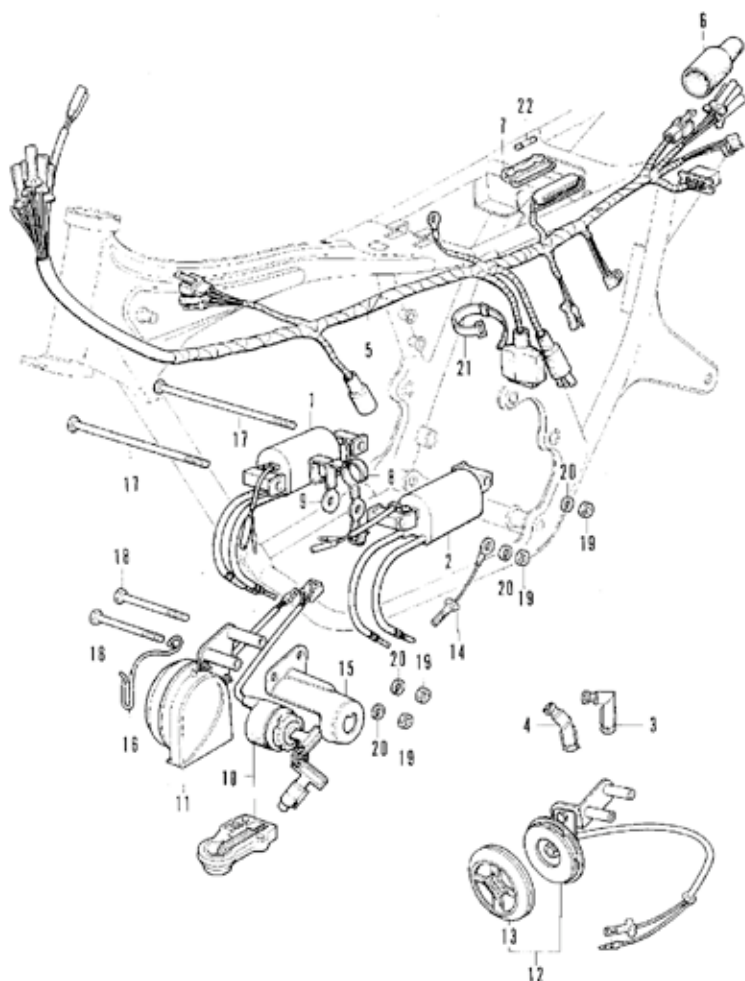




# F-25 Battery • Electric

Ref. No.	Part No.	Description	Reqd. No. CB350F	Serial No.	Export Area
1	31400-333-004	REGULATOR ASSY. (ND)	1		
2	31403-323-000	RUBBER, REGULATOR CUSHION	2		
3	31500-310-671	BATTERY ASSY. (12V.120AH)	1		
4	31700-333-008	RECTIFIER ASSY.	1		
5	32401-333-000	CABLE, STARTER BATTERY	1		
6	32412-333-000	COVER, BATTERY TERMINAL	1		
7	32601-286-000	CABLE, BATTERY EARTH	1		
8	35850-306-670	SWITCH ASSY., STARTER MAGNETIC	1		
9	35856-323-000	SUSPENSION, MAGNETIC SWITCH	1		
10	35857-333-000	COVER, MAGNETIC SWITCH	1		
11	35858-333-000	CORD, MAGNETIC SUB	1		
12	38300-252-670	RELAY ASSY., TURN SIGNAL (SIGNAL STAT)	1		A
13	38300-300-000	RELAY ASSY., TURN SIGNAL	1	1067C94	D
	38300-300-610	RELAY ASSY., TURN SIGNAL	1		ED, G, H
	38300-333-621	RELAY ASSY., TURN SIGNAL	1		F
	38300-369-004	RELAY ASSY., TURN SIGNAL (ND)	1	1067C95	D
14	38306-107-670	SUSPENSION, TURN SIGNAL RELAY	1		A
15	64706-286-000	COLLAR, NUMBER BRACKET SET	2		
16	50525-030-000	WASHER B, HANDLE HOLDER SETTING	2		
17	57000-06016	BOLT, HEX., 6X16	2		
18	54001-06000	NUT, HEX., 6PH	2		
19	54001-08000-05	NUT, HEX., 8PH	1		
20	54101-08000	WASHER, PLAIN, 8PH	1		
21	54111-04000	WASHER, SPRING, 6PH	2		
22	55012-17000	BAND A, BATTERY	1		

## F-26 Wire Harness

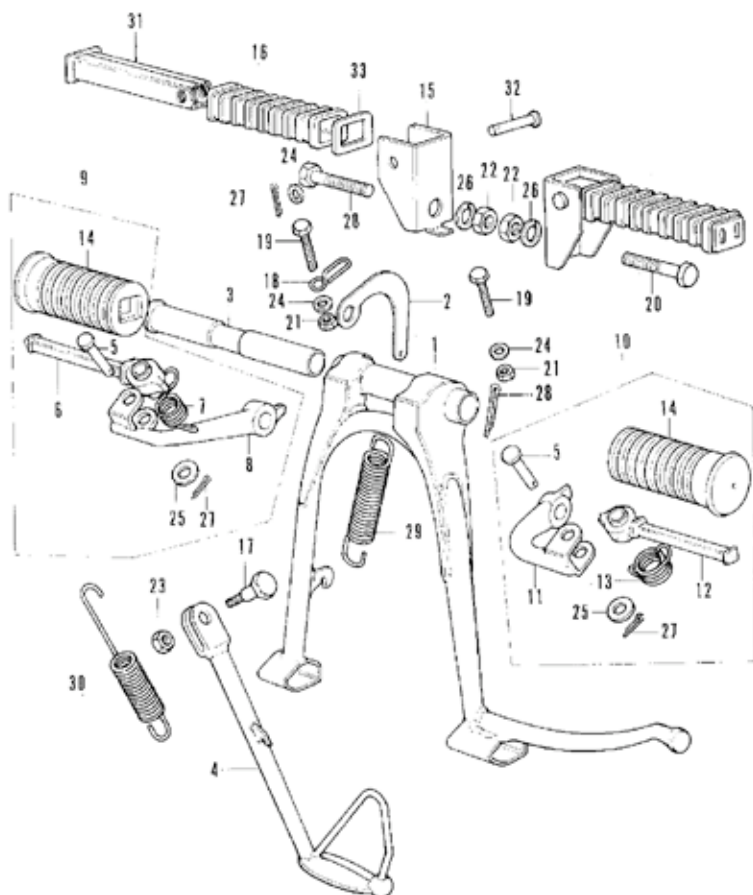


333-41

# F-26 Wire Harness

Ref. No.	Part No.	Description	Reqd. No. CB350F	Serial No.	Export Area
1	30510-333-013	COIL ASSY., RIGHT IGNITION	1		
2	30520-333-013	COIL ASSY., LEFT IGNITION	1		
3	30700-300-010	CAP. ASSY. A, NOISE SUPPRESSER	2		A+D
	30700-341-620	CAP. ASSY. A, NOISE SUPPRESSER	2		ED+F+G+IT
4	30701-323-013	CAP. ASSY. B, NOISE SUPPRESSER	2		A+D
	30701-323-622	CAP. ASSY. C, NOISE SUPPRESSER	2		ED+F+G+IT
5	32100-333-000	HARNES, WIRE	1		
6	32108-046-000	COVER, WIRE HARNESS CONNECTION	1		
7	32120-323-000	CASE, FUSE, 15A	1		
8	32165-333-000	CLIP, WIRE HARNESS	1		
9	32166-333-000	CLIP, COUPLER	1		
10	35020-323-672	SWITCH KIT, MAIN	1		A+D
	35070-323-612	SWITCH KIT, MAIN	1		ED+F+G+IT
11	38100-333-003	HORN ASSY. (MITSUBA)	1		A+D+G
	38100-333-620	HORN ASSY.	1		F
12	38100-333-732	HORN ASSY.	1		FD+IT
13	38101-341-630	COVER	1		ED+IT
14	38105-323-000	CORD, HORN FATH	1		D+ED+F+G+IT
15	50375-333-010	BRACKET, MAIN SWITCH	1		
16	50462-333-000	CLAMP, TACHOMETER CABLE	1		A+D+F+G
	50462-333-731	CLAMP, TACHOMETER CABLE	1		FD+IT
17	50167-333-000	BOLT, HEX., 6X130	2		
18	52000-06065	BOLT, HEX., 6X65	2		
19	54001-06000	NUT, HEX., 6MM	4		
20	54111-06000	WASHER, SPRING, 6MM	4		
21	55014-62200	BAND B2, WIRE	1		
22	58200-11500	FUSE, 15A	1		

### F-27 Main Stand • Step

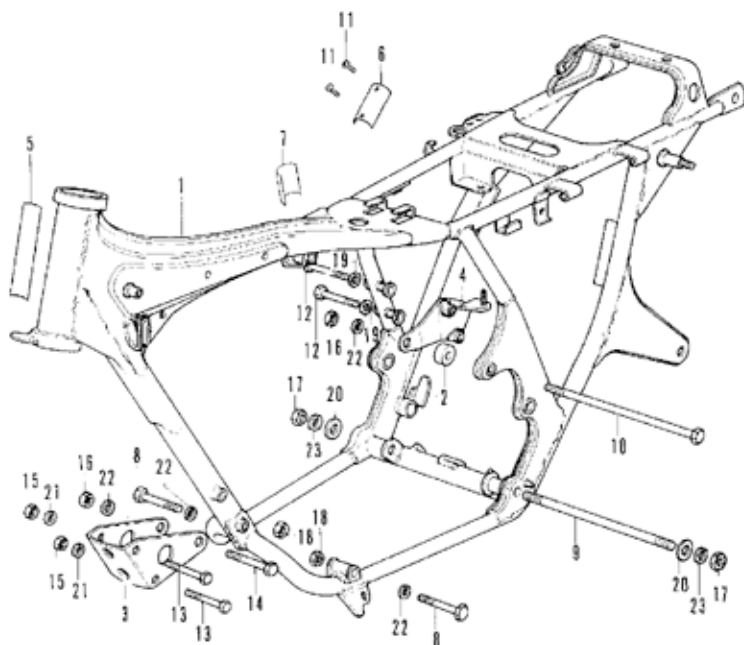


# F-27 Main Stand - Step

Ref. No.	Part No.	Description	Reqd. No. CR350F	Serial No.	Export Area
1	50500-333-000	STAND COMP., MAIN	1		
2	50523-333-000	HOOK, MAIN STAND SPRING	1		
3	50526-286-000	PIPE, MAIN STAND PIVOT	1		
4	50530-333-020	BAR, SIDE STAND	1		
5	50603-033-000	PIN, STEP BAR JOINT	2		
6	50616-310-000	ARM COMP., RIGHT STEP	1		
7	50617-283-000	SPRING, RIGHT STEP RETURN	1		
8	50618-333-670	BAR COMP., RIGHT STEP	1		
9	50630-333-670	STEP ASSY., RIGHT	1		
10	50640-333-670	STEP ASSY., LEFT	1		
11	50641-333-670	BAR COMP., LEFT STEP	1		
12	50642-310-000	ARM COMP., LEFT STEP	1		
13	50644-283-000	SPRING, LEFT STEP RETURN	1		
14	50661-333-000	RUBBER, STEP	2		
15	50713-333-000	BACKET, PILLION STEP	2		
16	50714-333-000	RUBBER, PILLION STEP	2		
17	50108-283-000	SCREW, SIDE STAND PIVOT	1		
18	90514-333-000	GUIDE, BATTERY BREATHING PIPE	1		
19	92000-06040	BOLT, HEX., 6X40	2		
20	92000-10035-0A	BOLT, HEX., 10X35	2		
21	94001-06000	NUT, HEX., 6MM	2		
22	94001-10000-0S	NUT, HEX., 10MM	2		
23	94030-10000	NUT, HEX., 10MM	1		
24	94101-06000	WASHER, PLAIN, 6MM	4		
25	94101-08000	WASHER, PLAIN, 8MM	2		
26	94111-10000	WASHER, SPRING, 10MM	2		
27	94201-16150	PIN, SPLIT, 1.6X15	4		
28	94201-25300	PIN, SPLIT, 2.5X30	1	1055093	A;D;F;G;H
	94201-25250	PIN, SPLIT, 2.5X25	1	1055094	A;D;E;F;G;H
29	95014-71701	SPRING G, MAIN STAND	1		
30	95014-72401	SPRING D, SIDE STAND	1		
31	95015-62000	BAR B, PILLION STEP	2		
32	95015-82000	PIN B, PILLION STEP	2		
33	95015-91000	WASHER, PILLION STEP	2		



## F-28 Frame Body

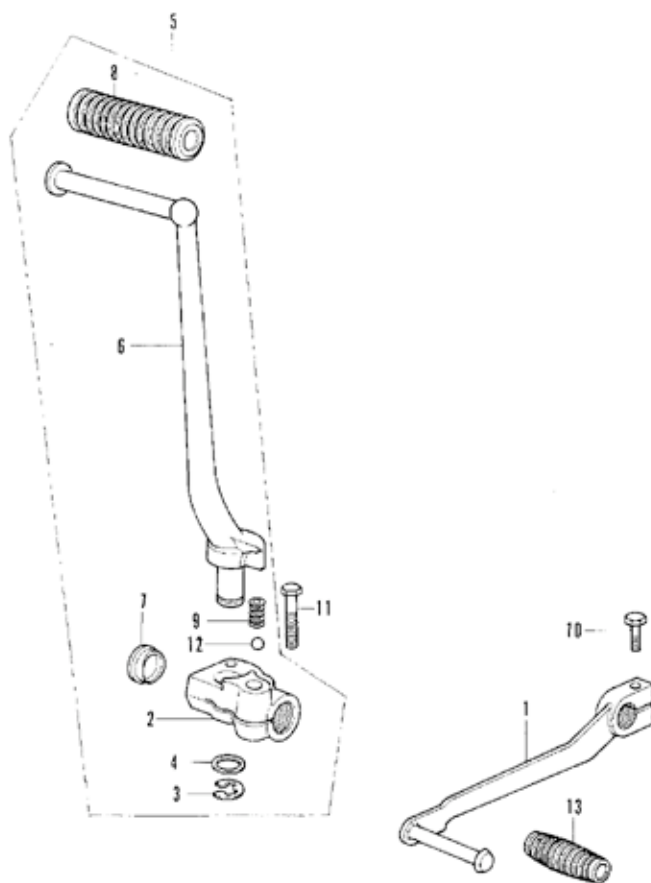


## F-28 Frame Body

Ref. No.	Part No.	Description	Regd. No. CB350F	Serial No.	Export Area
1	50100-333-010B	BODY COMP., FRAME	1		A & D
	50100-333-610B	BODY COMP., FRAME	1		F D & F & G & IT
2	50329-286-010	COLLAR, ENGINE SIDE	1		
3	50351-333-000	BRACKET, FRONT ENGINE HANGER	1		
4	50356-333-000	BRACKET, REAR ENGINE HANGER	1		
5	87125-041-680	PLATE, NAME	1		D
6	87501-333-611	PLATE, REGISTERED NUMBER	1		G
	87501-333-620	PLATE, REGISTERED NUMBER	1		F
	87501-333-730	PLATE, REGISTERED NUMBER	1		F D & IT
7	87506-333-670	MARK, BATTERY CAUTION	1		
8	90106-333-000	BOLT, FRONT ENGINE LOWER HANGER	2		
9	90107-333-000	BOLT, REAR ENGINE LOWER HANGER	1		
10	90108-333-000	BOLT, REAR ENGINE UPPER HANGER	1		
11	90841-C01-000	SCREW, RIVET, 1.5X5	2		L D & F & G & IT
12	92000-08065-0A	BOLT, HEX., 8X65	2		
13	92000-08080-0A	BOLT, HEX., 8X80	2		
14	92000-10080-0A	BOLT, HEX., 10X80	1		
15	94001-08000-0S	NUT, HEX., 8MM	2		
16	94001-10000-0S	NUT, HEX., 10MM	2		
17	94001-12200	NUT, HEX., 12MM	2		
18	94030-10000	NUT, HEX., 10MM	2		
19	94102-08000	WASHER, PLAIN, 8MM	2		
20	94102-12000	WASHER, PLAIN, 12MM	2		
21	94111-08000	WASHER, SPRING, 8MM	2		
22	94111-10000	WASHER, SPRING, 10MM	4		
23	94111-12000	WASHER, SPRING, 12MM	2		



# F-29 Kick Arm • Change Pedal



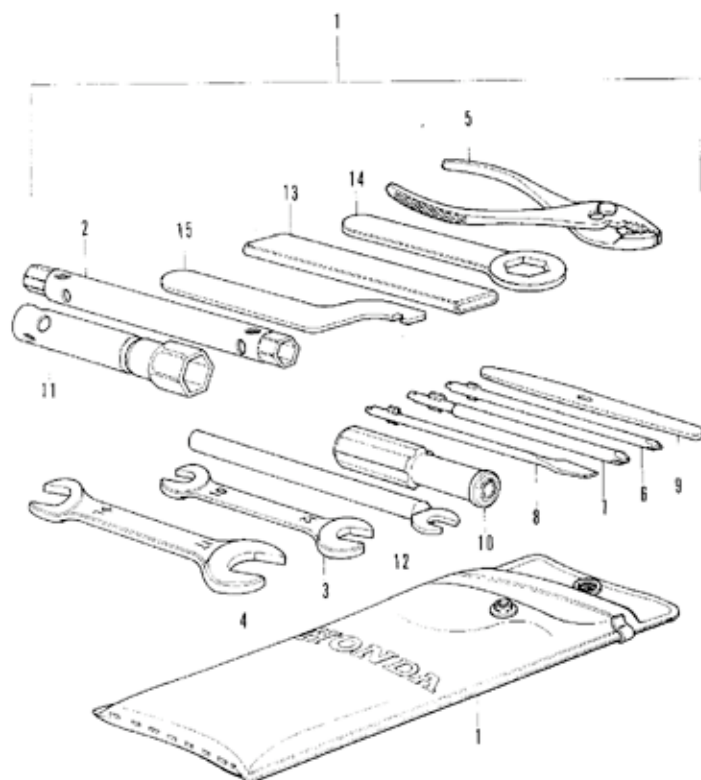


# F-29 Kick Arm - Change Pedal

Ref. No.	Part No.	Description	Req. No. CB350F	Serial No.	Export Area
1	24700-333-000	PEDAL COPP., GEAR CHANGE	1		
2	24241-333-010	JOINT, KICK ARM	1		
3	22293-333-000	CLIP, KICK STARTER ARM	1		
4	28294-333-000	WASHER, KICK ARM	1		
5	28300-333-010	ARM ASSY., KICK STARTER	1		
6	28301-333-010	ARM, KICK STARTER	1		
7	28305-333-010	CAP, KICK ARM	1		
8	28111-325-000	RUBBER, KICK STARTER	1		
9	28323-333-000	SPRING, KICK STARTER STOPPER	1		
10	52000-06020	BOLT, HEX., 6X20	1		
11	52000-06035	BOLT, HEX., 6X35	1		
12	55011-40000	RUBBER, CHANGE PEDAL	1		
13	56211-10000	BALL, STEEL, #10	1		



# F-30 Tool



# F-30 Tool

Ref. No.	Part No.	Description	Reqd. No. CB350F	Serial No.	Export Area
1	89C10-333-000	TOOL SET	1		
2	89101-300-010	BAG, TOOL	1	1073814	
	59008-02000	BAG, TOOL, 200MM	1	1073815	
3	89216-333-000	WRENCH, BOX, 10X12	1		
4	59001-10120	SPANNER, 10X12	1		
5	59001-14170	SPANNER, 14X17	1		
6	59007-13500	PLIERS, 135	1		
7	59003-10000	DRIVER, PLUS, #2	1		
8	59003-20000	DRIVER, PLUS, #3	1		
9	59003-30000	DRIVER, MINUS, #2	1		
10	59003-40000	LEVER	1		
11	59003-50000	GRIP	1		
12	59004-18002	WRENCH, PLUG BOX, 18.5	1		
13	59005-02000	BAR R, HANDLE	1		
14	59006-12000	HANDLE, EYE WRENCH, 120MM	1		
15	59006-22000	WRENCH, EYE, 22MM	1		
16	59007-45000	SPANNER, PIN, 45MM	1		



# PART No. INDEX

Courtesy of  Honda4Fun  
www.honda4fun.com www.honda4fun.com

Part No.	Block No.	Part No.	Block No.	Part No.	Block No.
11000		13210-333-004	E-14	15477-300-300	E-6
11000-333-305	E-18	13210-333-005	E-14	15650-333-000	E-8
11208-333-000	E-18	13213-333-003	E-14	15761-303-000	E-1
11210-333-020	E-6	13214-300-000	E-14	15772-292-010	F-1
11291-333-000	E-18	13215-333-003	E-14		F-14
11331-333-030	E-8	13216-333-003	F-14		
11341-333-000	E-12	13217-333-003	E-14	16000	
11341-333-010	E-12	13218-333-003	E-14	16010-333-004	E-19
11394-333-020	E-8	13219-333-003	E-14	16011-329-004	E-19
11398-333-020	E-6	13300-333-010	E-14	16012-333-004	E-19
11631-333-010	E-11	13314-333-003	E-14	16013-333-004	E-19
11632-333-010	E-11	13315-333-003	E-14	16014-333-004	E-19
11691-333-000	E-11	13316-333-003	E-14	16015-333-004	E-19
		13317-333-003	E-14	16016-333-004	E-19
12000		13318-333-003	E-14	16017-333-004	E-19
12100-333-030	F-4	13319-333-003	F-14	16018-333-004	E-19
12191-333-010	E-4	13492-283-000	E-16	16023-333-004	E-19
12200-333-050	E-2	14000		16025-333-004	F-19
12200-333-040	E-2	14101-333-020	E-3	16028-333-004	E-19
12200-333-070	F-2	14321-333-000	E-5	16029-333-004	E-19
12202-333-315	E-2	14321-334-000	E-5	16030-333-004	E-19
12203-333-325	E-2	14401-333-003	E-5	16031-333-004	E-19
12203-333-335	E-2	14431-333-000	E-3	16035-333-004	E-19
12209-333-005	E-2	14431-333-000	E-3	16036-333-004	E-19
12251-333-003	E-2	14435-333-000	E-3	16100-333-004	E-19
12310-333-020	E-1	14451-333-000	E-3	16101-333-004	E-19
12320-333-020	E-1	14500-333-020	E-5	16102-333-004	E-19
12329-333-010	E-1	14501-333-000	E-5	16103-333-004	E-19
12361-200-000	E-1	14530-333-000	E-5	16104-333-004	E-19
12391-333-000	E-1	14541-333-020	E-5	16111-333-004	E-19
12431-333-010	E-1	14543-333-000	E-5	16112-333-004	E-19
12435-333-000	E-1	14545-333-000	E-5	16173-253-004	E-2
12901-333-000	E-4	14550-333-000	E-5	16199-333-004	E-19
12903-333-000	E-2	14550-369-000	E-5	16212-333-030	E-2
12904-333-000	E-2	14620-333-000	E-5	16213-333-030	E-2
12905-333-000	E-2	14711-333-000	E-3	16290-333-000	E-19
12909-333-000	E-4	14721-333-000	E-3	16452-268-000	F-11
12910-333-000	E-4	14751-333-000	E-3	16953-268-020	F-11
		14751-333-010	E-3	16955-268-020	F-11
13000		14761-333-000	E-3	16957-268-010	F-11
13011-333-003	E-4	14761-333-010	E-3	16957-333-025	F-11
13011-333-004	E-4	14771-107-020	E-3	16958-268-010	F-11
13011-333-005	E-4	14775-107-000	E-3	16960-268-010	F-11
13012-333-003	E-4	14776-107-010	E-3	16961-268-010	F-11
13012-333-004	E-4	14781-107-020	E-3	16993-011-000	F-11
13012-333-005	E-4	15000		16997-273-006	F-11
13013-333-003	E-4	15100-333-010	E-12		
13013-333-004	E-4	15151-333-000	E-6	17000	
13013-333-005	E-4	15152-333-000	E-6	17210-333-015	F-14
13014-333-003	E-4	15153-333-000	E-6	17210-333-610	F-14
13014-333-004	E-4	15155-333-000	E-6	17216-333-010	F-14
13014-333-005	E-4	15157-333-000	E-6	17230-333-010	F-14
13015-333-003	E-4	15331-300-000	E-18	17230-333-610	F-14
13015-333-004	E-4	15332-300-000	E-18	17235-333-000	F-14
13015-333-005	E-4	15332-300-000	E-18	17236-333-000	F-14
13101-333-010	E-4	15391-333-000	E-12	17240-333-000	F-14
13102-333-010	E-4	15411-333-000	E-6	17241-333-000	F-14
13103-333-010	E-4	15412-300-024	E-6	17242-333-000	F-14
13104-333-010	E-4	15414-300-000	E-6	17245-107-010	F-14
13105-333-010	E-4	15415-300-000	E-6	17252-333-000	F-14
13111-087-000	F-4	15420-333-000	E-6	17255-246-000	E-2
13210-333-002	E-14	15423-333-000	E-6	17255-333-000	F-14
13210-333-003	E-14	15473-300-300	E-6	17256-333-000	F-14
		15474-300-310	E-6	17260-333-000	F-14



Part No.	Block No.	Part No.	Block No.	Part No.	Block No.
1730C-333-000	F-14	2287C-333-000	F-2	28122-333-300	F-15
17335-323-000	F-14	2287C-333-F10	F-2	28124-333-020	F-15
1750C-333-610HX	F-11			28126-333-010	F-15
1750C-333-610LY	F-11	23000		28211-333-020	F-10
1750C-333-610NQ	F-11			28221-333-010	F-10
1750C-333-620HX	F-11	23101-333-030	F-15	28241-333-010	F-29
1750C-333-620LY	F-11	23102-333-010	F-15	28251-333-010	F-10
1750C-333-620NQ	F-11	23104-333-020	F-9	28259-333-010	F-10
1750C-333-671HX	F-11	23108-333-020	F-9	28261-333-040	F-10
1750C-333-671LY	F-11	23110-333-000	F-15	28271-333-000	F-10
1750C-333-671NQ	F-11	23111-333-000	F-15	28293-333-020	F-29
1750C-333-671PJ	F-11	23112-333-000	F-15	28294-333-000	F-29
1751C-323-310	F-11	23114-333-000	F-15	28300-333-010	F-29
17513-300-300	F-11	23131-323-000	F-15	28301-333-010	F-29
17514-323-300	F-11	23132-333-010	F-15	28305-333-010	F-29
17515-300-300	F-11	23211-333-030	F-15	28311-329-000	F-29
17517-300-340	F-11	23220-333-010	F-15	28333-333-000	F-29
17534-323-300	F-11	23311-200-000	F-9		
17611-286-000	F-11	23420-333-000	F-15	30000	
17613-333-010	F-11	23431-333-010	F-15	30200-333-004	F-7
17681-333-000	F-11	23451-333-000	F-15	30201-333-004	F-7
1791C-333-000	F-1	23461-333-010	F-15	30203-333-004	F-7
1791C-333-610	F-1	23471-333-000	F-15	30204-333-004	F-7
1792C-333-000	F-1	23481-333-000	F-15	30205-028-004	F-7
1792C-333-610	F-1	23491-333-020	F-15	30205-333-004	F-7
		23501-333-000	F-15	30215-333-004	F-7
18000		23801-333-000	F-15	30220-333-004	F-7
18231-333-010	F-15	23811-292-000	F-15	30233-333-000	F-7
18233-303-010	F-15			30250-333-004	F-7
18291-028-000	F-15	24000		30370-323-000	F-7
18300-333-010	F-15	24211-333-020	F-17	30372-300-300	F-7
18300-333-610	F-15	24216-333-020	F-17	30410-333-013	F-26
18300-333-710	F-15	24221-333-020	F-17	30523-333-013	F-26
18325-333-000	F-15	24226-333-020	F-17	30700-300-010	F-26
18400-333-010	F-15	24231-333-010	F-17	30700-341-620	F-26
18400-333-610	F-15	24261-283-000	F-15	30701-323-013	F-26
18400-333-710	F-15	24300-333-000	F-17	30701-323-622	F-26
18425-333-000	F-15	24301-333-010	F-17		
18472-300-000	F-15	24304-333-030	F-17	31000	
18473-300-000	F-15	24321-333-010	F-17	31101-333-004	F-11
18500-333-010	F-15	24326-300-000	F-17	31102-333-004	F-11
18500-333-610	F-15	24400-333-000	F-17	31103-333-004	F-11
18500-333-710	F-15	24435-333-000	F-17	31110-333-030	F-11
18600-333-010	F-15	24436-333-010	F-17	31200-333-000	F-13
18600-333-610	F-15	24440-333-000	F-17	31201-290-174	F-13
18600-333-710	F-15	24610-333-010	F-17	31204-225-154	F-13
		24641-216-000	F-17	31206-286-158	F-13
22000		24641-333-000	F-17	31400-333-004	F-25
22100-333-040	F-9	24651-333-000	F-17	31403-323-000	F-25
22116-333-020	F-9	24652-035-000	F-17	31500-310-671	F-25
22120-333-040	F-9	24660-333-020	F-17	31503-044-670	F-13
22125-333-000	F-9	24667-333-020	F-17	31700-333-008	F-25
22201-302-000	F-9	24700-333-000	F-29		
22201-333-010	F-9			32000	
22321-333-010	F-9	25000		32100-333-000	F-26
22350-333-010	F-9	25911-500-000	F-5	32109-046-000	F-26
22360-333-010	F-9			32111-333-000	F-18
22401-268-000	F-9	28000		32112-333-000	F-18
22402-333-003	F-9				
22410-333-030	F-8	29101-333-000	F-13		
22415-333-000	F-8	29106-333-000	F-13	32113-333-000	F-12
22421-107-000	F-8	28111-333-310	F-15	32120-323-000	F-26
22831-333-010	F-8	28120-333-000	F-15	32165-333-000	F-26
22850-333-000	F-9	28121-333-300	F-15	32166-333-020	F-26

# PART No. INDEX

Courtesy of  Honda4Fun  
www.honda4fun.com www.honda4fun.com

Part No.	Block No.	Part No.	Block No.	Part No.	Block No.
32401-333-000	F-25	33600-300-000	F-23	35000	
32410-333-000	F-13	33600-306-670	F-23		
32411-253-000	F-13	33600-333-620	F-23	35020-323-612	F-26
32412-333-000	F-25	33600-333-730	F-23	35020-323-672	F-26
32601-266-000	F-25	33602-323-631	F-23	35150-333-620	F-22-1
32981-311-000	F-20	33603-053-650	F-14		F-22-2
32985-300-000	F-20	33605-292-610	F-23-1	35151-292-751	F-22-1
		33605-333-000	F-23		F-22-2
33000		33606-074-010	F-23	35152-268-000	F-22-1
		33609-333-000	F-23		F-22-2
33100-286-611	F-22-1	33610-292-610	F-23-1	35153-268-000	F-22-1
33100-286-622	F-22-2	33610-300-000	F-23		F-22-2
33100-333-671	F-22	33610-306-670	F-23	35154-268-000	F-22-1
33101-283-601	F-22-1	33616-304-650	F-23-1		F-22-2
33101-286-621	F-22-2	33650-292-610	F-23-1	35250-300-033	F-2
33101-333-670	F-22	33650-292-611	F-23-1	35250-319-003	F-2
33103-333-000	F-22	33650-306-670	F-23	35250-323-013	F-2
33107-333-000	F-22	33650-333-000	F-23	35250-333-003	F-2
33108-268-000	F-22-1	33650-333-620	F-23	35300-333-610	F-1
	F-22-2	33650-333-730	F-23	35300-333-671	F-1
33109-333-680	F-22	33660-292-610	F-23-1	35303-333-610	F-22-1
	F-22-1	33660-306-670	F-23		F-22-2
	F-22-2	33660-333-003	F-23	35315-235-000	F-1
33115-283-601	F-22-1	33666-304-650	F-23-1	35317-001-310	F-1
33115-286-621	F-22-2	33700-292-610	F-24-2		F-2
33117-292-003	F-22	33701-051-000	F-24-2	35317-310-810	F-2
33120-283-601	F-22-1	33701-333-620	F-24-1	35318-259-000	F-1
33120-286-621	F-22-2	33701-342-671	F-24		F-2
33120-333-670	F-22	33702-323-603	F-24-1	35350-300-006	F-5
33125-077-761	F-22	33702-341-671	F-24	35350-300-016	F-5
33128-200-033	F-22	33703-333-620	F-24-1	35350-336-000	F-16
33130-286-611	F-22-1	33703-342-671	F-24	35357-011-000	F-16
33130-286-622	F-22-2	33707-292-610	F-24-2	35500-333-004	E-12
33130-333-000	F-22	33708-077-671	F-24-1	35500-333-014	F-12
33170-286-611	F-22-1	33708-292-610	F-24-2	35510-333-000	F-12
33400-292-003	F-23	33708-341-671	F-24	35750-333-013	E-11
33400-292-611	F-23-1	33709-051-000	F-24-2	35750-333-023	E-11
33400-292-612	F-23-1	33709-077-671	F-24-1	35751-333-003	F-11
33400-292-670	F-23	33709-341-671	F-24	35755-333-010	E-11
33400-317-730	F-23	33710-292-610	F-24-2	35850-306-670	F-25
33401-292-003	F-23	33710-333-000	F-24	35856-323-000	F-25
33402-268-610	F-23-1		F-24-1	35857-333-000	F-25
33402-268-671	F-23	33711-333-000	F-24	35858-333-000	F-25
33402-292-003	F-23		F-24-1		
33403-285-010	F-23-1	33712-300-003	F-24	37000	
33407-284-000	F-23		F-24-1		
33408-284-000	F-23	33715-051-000	F-24-2	37211-333-008	F-21
33408-341-701	F-23	33716-051-000	F-24-2	37212-333-000	F-21
33410-292-000	F-23	33717-292-610	F-24-2	37212-455-000	F-21
	F-23-1	33719-077-671	F-24	37213-333-000	F-21
33410-292-610	F-23-1		F-24-1	37213-455-000	F-21
33411-285-000	F-23-1	33741-333-610	F-24-2	37230-333-672	F-21
33413-285-000	F-23-1	33741-340-670	F-8	37230-333-680	F-21
33441-333-000	F-23	33743-341-670	F-8	37240-333-008	F-21
33441-455-670	F-23			37242-323-701	F-21
33443-268-671	F-23	34000		37243-323-000	F-21
33450-292-003	F-23			37243-457-000	F-21
33450-292-611	F-23-1	34902-259-000	F-3	37244-307-670	F-21
33450-292-612	F-23-1		F-21	37260-333-000	F-21
33450-292-670	F-23	34905-266-671	F-23	37576-323-000	F-3
33450-317-730	F-23	34905-284-000	F-23	37577-333-000	F-3
33453-292-003	F-23	34908-313-671	F-24	37579-323-000	F-3
33460-292-610	F-23-1	34908-594-602	F-24-1	37581-333-000	F-3
33460-292-650	F-23				
33600-292-610	F-23-1				
33600-292-611	F-23-1				



Part No.	Block No.	Part No.	Block No.	Part No.	Block No.
38000		44000		45513-341-671	F-4
38100-333-003	F-26	44301-312-000	F-7	45513-341-770	F-4
38100-333-620	F-26	44311-300-000	F-7	45517-300-003	F-4
38100-333-732	F-26	44601-317-702	F-7	45520-300-000	F-4
38101-241-630	F-26	44606-203-000	F-7	45521-300-010	F-4
38105-223-000	F-26		F-17	45522-300-010	F-5
38205-115-000	F-13	44607-203-000	F-7	45526-341-000	F-4
38300-292-670	F-25		F-17	45527-300-000	F-4
38300-300-000	F-25	44608-203-000	F-7	46000	
38300-300-610	F-25		F-17	46125-533-003	F-4
38300-333-621	F-25	44609-203-000	F-7	46140-533-003	F-4
38300-169-004	F-25		F-17	46500-333-010	F-16
38306-107-670	F-25	44620-317-701	F-7	46514-333-000	F-16
40000		44641-333-000	F-7	46515-333-000	F-16
40510-333-000	F-19	44642-317-701	F-7		
40514-333-000	F-19	44643-300-000	F-7	50000	
40530-333-003	F-19	44701-317-701	F-7	50100-333-010A	F-28
40530-333-005	F-19	44711-333-003	F-7	50100-333-610A	F-28
40531-333-003	F-19	44800-317-700	F-7	50301-268-305	F-10
40531-333-005	F-19	44830-323-000	F-21	50302-268-305	F-10
40543-312-010	F-19	44831-323-000	F-21	50329-286-010	F-28
40548-268-000	F-19	44831-333-000	F-21	50351-333-000	F-28
41000		45000		50356-333-000	F-28
41123-516-000	E-12	45100-333-043	F-6	50375-333-010	F-26
41200-333-000	F-17	45101-323-013	F-6	50400-333-000	F-20
41200-333-710	F-17	45102-323-003	F-6	50400-333-610	F-20
41202-286-000	F-17	45104-317-700	F-6	50462-333-030	F-26
41211-333-000	F-17	45105-323-043	F-6	50462-333-731	F-26
41231-286-000	F-17	45106-323-006	F-6	50500-333-000	F-27
41241-286-000	F-17	45106-323-013	F-6	50523-333-000	F-27
42000		45107-323-020	F-6	50526-286-000	F-27
42301-286-010	F-16	45108-300-003	F-6	50530-333-020	F-27
42311-286-000	F-17	45115-323-010	F-6	50603-033-000	F-27
42313-286-000	F-16	45116-323-010	F-6	50616-310-000	F-27
42601-333-000	F-17	45116-323-020	F-6	50617-283-000	F-27
42620-286-000	F-17	45117-300-020	F-6	50618-333-670	F-27
42625-286-000	F-17	45119-333-000	F-6	50630-333-670	F-27
42701-286-003	F-17	45120-317-701	F-6	50640-333-670	F-27
42701-290-003	F-17	45120-369-000	F-6	50641-333-670	F-27
42711-323-013	F-17	45125-300-020	F-5	50642-310-000	F-27
42712-268-000	F-7	45126-300-011	F-5	50644-283-000	F-27
42712-287-000	F-17	45126-333-000	F-5	50661-333-000	F-27
42713-268-000	F-17	45127-323-000	F-5	50713-333-000	F-27
43000		45128-317-701	F-5	50714-333-000	F-27
43100-333-000	F-16	45133-240-000	F-16	51000	
43120-286-000	F-16	45133-329-000	F-16	51400-333-000	F-8
43141-286-010	F-16	45134-250-000	F-16	51401-333-000	F-8
43410-286-000	F-16	45140-333-000	F-6	51402-333-000	F-8
43431-333-000	F-19	45146-300-000	F-5	51410-317-700	F-8
43434-286-000	F-16	45224-579-013	F-6	51413-317-700	F-8
43451-316-670	F-16	45225-579-013	F-6	51421-333-000	F-8

# PART No. INDEX

Courtesy of  Honda4Fun  
www.honda4fun.com www.honda4fun.com

Part No.	Block No.	Part No.	Block No.	Part No.	Block No.
51606-333-000LY	F-8	53631-268-C20	F-10	84706-342-000	F-24-1
51606-333-000NQ	F-8			84905-333-000	F-24
51606-333-000PJ	F-8	61000			F-24-1
51608-266-010	F-8				F-24-2
51611-344-670HX	F-8	61100-333-000XW	F-9	84906-118-000	F-24
51611-344-670LY	F-8	61301-333-003E	F-22		F-24-1
51611-344-670NQ	F-8	61301-333-610H	F-22-1		F-24-2
51611-344-670PJ	F-8		F-22-2		
51612-333-000HX	F-8	61302-292-000	F-22	87000	
51612-333-000LY	F-8	61303-336-000	F-22		
51612-333-000NQ	F-8	61304-292-000	F-22	87121-333-000	F-11
51612-333-000PJ	F-8	61305-333-010	F-22	87122-333-000	F-11
51622-286-010	F-8	61306-333-003	F-22	87125-041-680	F-28
				87128-333-000	F-13
52000		77000		87129-333-000	F-13
				87131-516-000	F-11
52100-333-000B	F-19	77103-313-000	F-12	87501-333-611	F-28
52108-333-003	F-19	77200-333-000A	F-12	87501-333-620	F-28
52108-457-300	F-19	77201-074-000	F-12	87501-333-730	F-28
52109-263-300	F-19	77201-333-000	F-12	87504-028-670	F-19
52136-333-000	F-19	77204-312-000	F-12	87505-333-670	F-28
52141-333-000	F-19	77210-333-810	F-12	87507-333-610	F-20
52144-283-010	F-19	77211-323-300	F-12	87507-333-670	F-20
52144-362-000	F-19	77212-323-300	F-12	87507-333-680	F-20
52145-283-000	F-19	77220-340-011	F-12	87560-323-611A	F-11
52400-333-000XW	F-18	77228-340-001	F-12	87560-323-611R	F-11
52401-317-700	F-18	77229-340-001	F-12	87560-323-621A	F-11
52403-317-700	F-18	77230-347-003	F-12	87560-323-621R	F-11
52410-333-000	F-18	77251-342-000	F-13	87560-323-670A	F-11
52421-292-670XW	F-18			87560-323-670B	F-11
52422-331-003	F-18	80000			
52424-331-003	F-18			88000	
52458-317-700	F-18	80100-333-000XW	F-20		
52482-331-003	F-18	80100-333-610XW	F-20	88100-333-004	F-1
52484-292-000	F-18	80100-333-730XW	F-20	88100-333-610	F-1
52517-331-003	F-18	80105-333-000	F-20	88110-304-621	F-1
		8010H-061-010	F-23	88120-304-621	F-2
53000		80121-317-731	F-20	88120-333-004	F-2
				88120-333-610	F-2
53100-333-000	F-3	83000			
53100-333-611	F-3			89000	
53124-250-000	F-10	83501-333-C20	F-13		
53133-323-010	F-3	83502-333-000	F-13	89010-333-000	F-30
53141-300-010	F-1	83600-333-C10HX	F-13	89101-300-010	F-30
53163-300-020	F-1	83600-333-C10LY	F-13	89216-333-000	F-30
53165-342-670	F-1	83600-333-C10NQ	F-13		
53166-342-670	F-2	83600-333-C10PJ	F-13	90000	
53170-333-000	F-4	83601-333-000	F-13		
53170-369-003	F-4	83618-323-000	F-14	90012-333-000	E-3
53190-266-670	F-2	83621-333-000	F-13	90013-333-010	F-9
53190-300-000	F-1	83700-333-C10HX	F-13	90014-333-000	E-11
53190-369-700	F-2	83700-333-C10LY	F-13	90016-286-000	E-5
53191-300-000	F-1	83700-333-C10NQ	F-13	90017-333-000	E-18
53192-268-000	F-2	83700-333-C10PJ	F-13	90018-333-000	F-1
53200-333-000B	F-10	83701-333-000	F-13	90031-333-000	E-18
53200-333-610B	F-10	83703-333-000	F-13	90032-333-000	E-18
53208-317-700	F-5	83704-333-000	F-13	90046-333-300	E-2
53211-268-305	F-10	83705-333-000	F-13	90045-329-000	E-18
53212-250-305	F-10			90081-246-000	E-5
53215-250-000	F-10	84000		90081-312-000	E-5
53215-317-000	F-10			90081-512-010	E-13
53220-286-000	F-10	84701-292-610H	F-24-2	90082-333-000	E-18
53225-333-000	F-10	84701-333-620B	F-24-1	90084-333-000	F-1
53226-333-000	F-10	84701-341-670XW	F-24	90086-333-000	E-18
53231-333-000	F-3	84706-286-000	F-25	90106-333-000	F-28
53600-230-004	F-10	84706-342-000	F-24	90107-333-000	F-28





Part No.	Block No.	Part No.	Block No.	Part No.	Block No.
90108-283-000	F-27	90545-300-000	F-5	92000-06020	F-6
90108-333-000	F-28	90549-121-000	F-14		F-14
90111-362-000	F-3	90555-283-000	F-3		F-30
90114-300-000	F-4	91581-342-000	F-24		F-29
90114-310-000	F-2		F-24-1	92000-06025-00	F-24
90116-283-010	F-8	90601-300-000	F-5		F-24-1
90119-283-000	F-19		F-14		F-24-2
90121-292-000	F-19	90601-333-000	E-1	92000-06025	F-4
90122-317-702	F-7	90605-200-000	E-1	92000-06028-02	F-23
90123-317-700	F-8	90609-333-000	E-9		F-23-1
90127-283-000	F-16	90651-337-003	F-4	92000-06028	F-5
90133-286-000	F-19	90665-286-000	F-17	92000-06035	F-29
90145-300-000	F-5	90841-001-000	F-2	92000-06040	F-27
90154-268-670	F-23			92000-06065	F-26
90154-246-610	F-23	91000		92000-06016-01	F-21
	F-23-1			92000-06020-01	F-17
90154-455-670	F-23	91001-215-300	F-17		F-21
90165-223-000	F-6	91007-286-004	E-16	92000-06028-04	F-16
90167-333-000	F-26	91007-333-000	E-15	92000-06032-04	F-10
90201-333-020	E-9	91022-333-018	E-16	92000-06056-06	F-3
90206-001-000	F-3	91101-253-020	E-15	92000-06065-04	F-28
90236-300-000	E-2	91101-333-000	F-17	92000-06080-04	F-28
90237-333-000	F-2	91201-300-003	F-14	92000-10020-01	F-22-1
90304-223-670	F-10	91201-323-005	F-14		F-22-2
90305-233-000	F-7	91201-324-010	E-1	92000-10037-04	F-22
90307-283-000	F-19	91204-259-000	F-8	92000-10035-07	F-17
90309-215-000	F-18	91205-333-005	E-14	92000-10080-04	F-26
90309-357-000	F-6	91206-286-005	F-17	92023-06025	F-16
90312-512-000	F-13	91206-286-013	E-17	92100-06020	F-17
90321-215-670	F-2	91206-333-003	F-8	92100-06028	F-6
90354-268-000	F-19	91207-333-000	F-14	92200-06036	F-16
90411-333-000	F-16	91252-300-003	F-7	92700-06045	F-6
90433-283-000	F-13	91253-286-013	F-17	92700-06050-30	F-8
90435-333-000	E-17	91254-333-010	F-8	92700-12000	F-6
90441-333-000	F-2	91255-312-003	F-8		
90443-107-000	F-2	91259-333-000	F-6	93000	
90451-300-000	F-16	91301-200-000	F-2		
90452-323-000	F-2	91301-333-000	E-2	93000-06036-04	F-3
90454-107-000	F-10	91301-704-000	F-8	93000-06065-04	F-20
90455-233-010	E-9	91307-001-000	F-1	93000-10032-04	F-18
90457-333-000	F-1	91307-028-000	F-6	93000-03006-04	F-19
90458-324-010	F-1		F-12		F-11
90471-333-000	F-8	91302-044-010	F-17	93500-03006-04	F-22-1
90474-333-000	F-5	91302-317-100	F-7		F-22-2
90500-455-000	F-21	91303-333-000	F-17	93500-03008-04	F-10
90501-040-000	F-14	91305-216-000	F-4	93500-03010-04	F-23-1
90501-310-000	F-2	91305-333-000	E-2	93500-03045-04	F-24-2
90501-283-000	F-10	91309-300-000	F-13	93500-04010-04	F-19
90506-500-000	F-14	91314-220-000	E-19	93500-04050-4J	F-24-1
90512-300-000	F-20	91316-300-003	E-6	93500-04055-04	F-24
90514-333-000	F-27	91317-703-000	F-5	93500-05006-04	F-2
90514-700-000	F-12	91319-300-000	F-14	93500-05008-04	F-23
90518-921-000	F-3	91329-590-003	E-6	93500-05014-04	F-7
90527-286-000	F-17	91354-702-000	F-8	93500-05016-04	F-19
90522-317-700	F-6				F-14
90523-286-000	F-17	92000		93500-05016-04	F-22
90524-030-000	F-16			93500-05016-04	F-15
90525-030-000	F-21	92000-06020-0A	F-24	93500-05020-04	F-14
	F-24		F-24-1	93500-05025-04	F-2
	F-24-1	92000-06008	F-8		F-1
	F-24-2	92000-06012	E-15		F-2
	F-25		F-16	93500-05032-04	F-1
90526-216-000	F-19		F-13	93500-06008-02	F-8
90527-230-000	F-18	92000-06016	F-9	93500-06012	F-6
90543-273-000	F-8		F-13		F-11
90544-283-000	F-8		F-25	93500-06016	F-11

# PART No. INDEX

Courtesy of  
www.honda4fun.com



Part No.	Block No.	Part No.	Block No.	Part No.	Block No.
93500-C6016	F-19	94101-C6000	F-27	94201-20150	F-8
93500-C6018	F-7	94101-05000	F-7	F-16	F-16
93500-C6020-49	F-20	94101-C6000	F-5	F-19	F-19
93500-C6023	F-11		F-8	94201-25250	F-27
93500-C6032	F-11		F-4	94201-25300	F-27
93500-C6035	F-12		F-6	94201-30450	F-14
93500-C6040	E-8		F-8	94201-40300	F-17
	F-11		F-9	94251-05000	F-22
93500-C6055	E-8		F-12	94251-06000	F-12
	F-11		F-13	94251-08000	F-16
93500-C6090	E-8		F-14	94301-08100	E-18
93600-C6012-07	F-12		F-15	94301-08140	F-2
93600-C6014	E-15		F-19		E-18
93600-C6016	F-19		F-20	94301-10140	F-18
93700-C6025-08	F-23		F-23	94301-12200	E-4
93700-C6048-08	F-23-1		F-23-1	94301-14200	E-12
93700-C6012-08	E-11		F-27	94302-06100	E-15
93700-C6010-08	F-22-1	94101-C6000	F-8	94305-20143	F-13
	F-22-2		F-13	94520-52000	F-15
93700-C6016-04	F-7		F-19	94521-47000	F-8
93700-C6020-04	E-1		F-23	94601-13000	E-4
93700-C6025-02	F-23		F-21	94608-30000	F-8
93700-C6030	E-7		F-25	94608-40000	E-18
			F-27		
94000		94101-10000	F-22	95000	
			F-22-1		
94001-C3000-05	F-22-1		F-22-2	95001-35600-40	E-19
	F-22-2		F-23	95002-C2070	E-19
94001-C6000	E-8		F-23-1	95002-C2080	F-11
	F-2	94102-C6000	F-29	95010-16000	F-2
	F-4	94102-08200	F-3		F-4
	F-6	94102-10000	F-6	95011-40000	F-29
	F-12	94102-12000	F-24	95011-64000	F-15
	F-14	94109-12000	F-6	95012-17000	F-25
	F-15	94109-14000	E-1	95014-41000	F-8
	F-16	94111-03000	F-22-1	95014-62200	F-26
	F-20		F-22-2	95014-71701	F-27
	F-23	94111-05000	F-19	95014-72401	F-27
	F-23-1	94111-05200	F-22	95014-73300	F-16
	F-24-2	94111-C6000	E-5	95015-32000	F-16
	F-25		E-19	95015-42000	F-16
	F-26		F-5	95015-51000	F-16
	F-27		F-6	95015-52000	F-16
94001-C6000-05	F-6		F-8	95015-62000	F-27
	F-15		F-12	95015-R2000	F-27
	F-16		F-23	95015-91000	F-27
	F-19		F-24-2	95700-06016	E-6
	F-20		F-25		E-17
	F-25		F-26	95700-06020	F-9
	F-28	94111-08000	F-6	95700-06028	F-1
94001-10000-05	F-23		F-8		E-13
	F-23-1		F-15	95700-06032	F-1
	F-27		F-21		E-12
	F-28		F-29		E-17
94001-12200	F-28	94111-10000	F-19	95700-06035	E-1
94002-C6000-05	E-5		F-22		F-2
94011-16220-05	F-17		F-22-1	95700-06040	E-1
94021-C6020	F-21		F-22-2		F-6
94021-C6000-05	F-21		F-23		E-18
94021-C6020-05	F-3		F-23-1	95700-06060	E-1
	F-21		F-27		E-18
94030-C6000	F-8		F-28	95700-06090	F-18
94030-10000	F-27	94111-12000	F-23	95700-06100	E-18
	F-28	94201-16120	F-16	95700-08032	F-12
94031-10000	F-17	94201-16150	F-27	95800-06055	E-7
94101-C3000	F-10	94201-16220	F-6		



# PART No. INDEX

Part No.	Block No.	Part No.	Block No.	Part No.	Block No.
96C00					
96100-62050	E-15				
96140-63020-10	F-7				
96140-63030-10	F-17				
96140-63040-10	F-17				
96201-30001	F-19				
96211-C8000	F-10				
96211-10000	F-29				
96220-40118	E-17				
96220-40214	F-17				
97C00					
97311-69233-10	F-7				
97339-52157-10	F-17				
97339-52159-10	F-17				
97715-52156-10	F-17				
97715-52158-10	F-17				
97716-69232-10	F-7				
98C00					
98069-38710	E-2				
98069-58700	E-2				
98069-58711	F-2				
98069-58721	E-2				
98200-11500	F-13				
	F-26				
99C00					
99001-10120	F-30				
99001-14170	F-30				
99002-13500	F-30				
99003-10000	F-30				
99003-20000	F-30				
99003-30000	F-30				
99003-40000	F-30				
99003-50000	F-30				
99004-18002	F-30				
99005-02000	F-30				
99006-12000	F-30				
99006-22000	F-30				
99007-45000	F-30				
99008-02000	F-30				
99124-076-0350	E-19				
99124-076-0360	E-19				
99202-60106-80	E-19				
99202-60107-00	E-19				
99202-60107-20	E-19				
99202-60107-50	E-19				
99202-60107-80	E-19				
99202-60108-00	E-19				
99500-C3006-0A	F-22-1				
	F-22-2				



Courtesy of  Honda4Fun  
[www.hondalour.com](http://www.hondalour.com) [www.honda4fun.com](http://www.honda4fun.com)



**HONDA**  
HONDA MOTOR CO., LTD. TOKYO, JAPAN