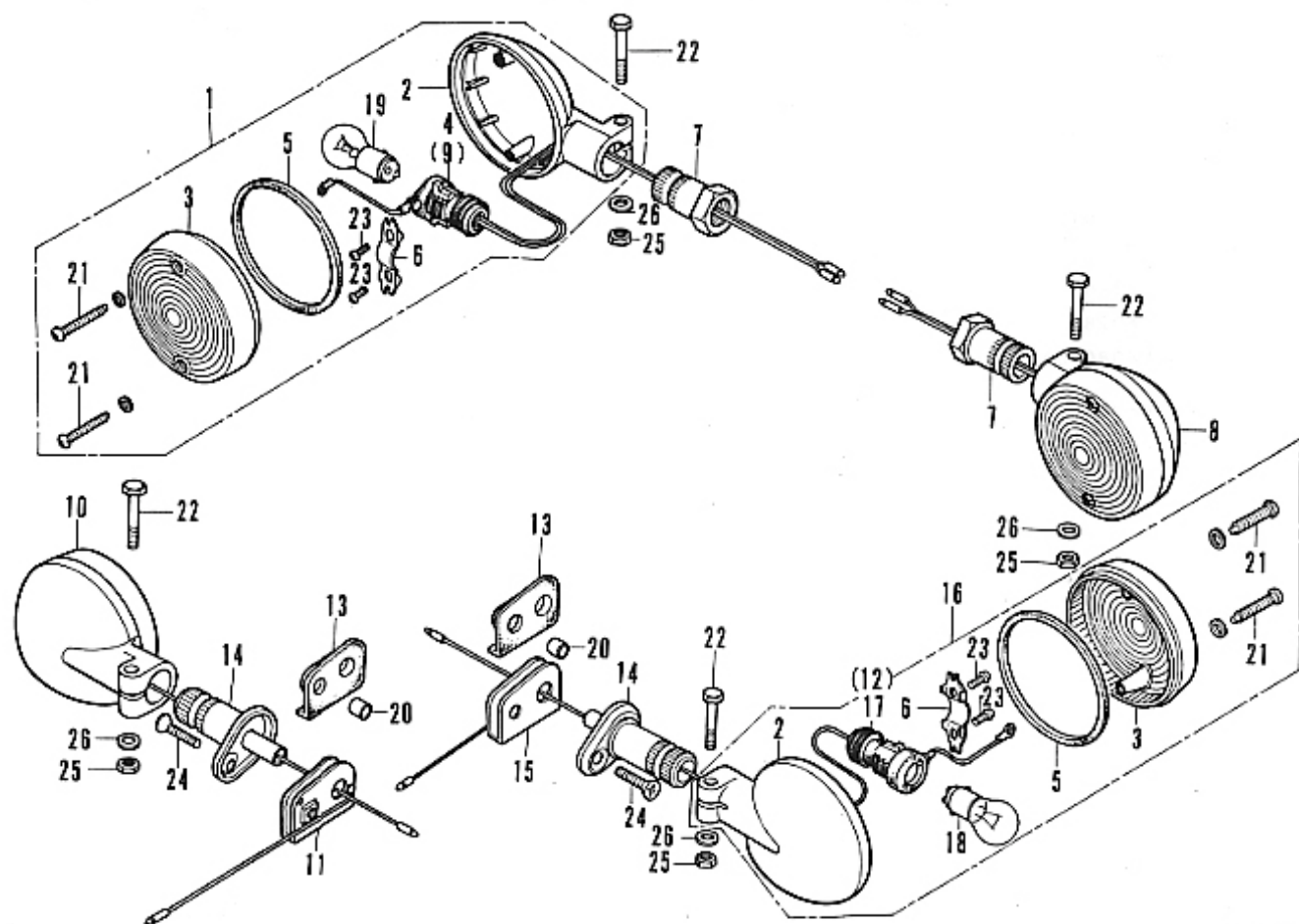


F-21 Rear Fender

Ref. No.	Part No.	Description	Reqd. No. CB550F	Serial No.	Area code
1	32985-300-000	GROMMET, WIRE CORD	3		
2	80100-323-670XW	FENDER A COMP., REAR	1		
3	80101-390-000	FENDER ASSY., R REAR	1		
4	80102-323-000	GROMMET, WIRE CORD	2		
5	84100-390-000	BUMPER, REAR	1		
6	87505-390-670	MARK, TIRE CAUTION	1		
7	90512-300-000	WASHER, 6X20	2		
8	90899-323-610	PLUG, CORN	1		
9	92000-06028	BOLT, HEX., 6X28	2		
10	93000-08080-08	BOLT, HEX., 8X80	2		
11	94101-06000	WASHER, PLAIN, 6MM	2		
12	94101-08200	WASHER, PLAIN., 8MM	2		

F-22 Turn Signal Light



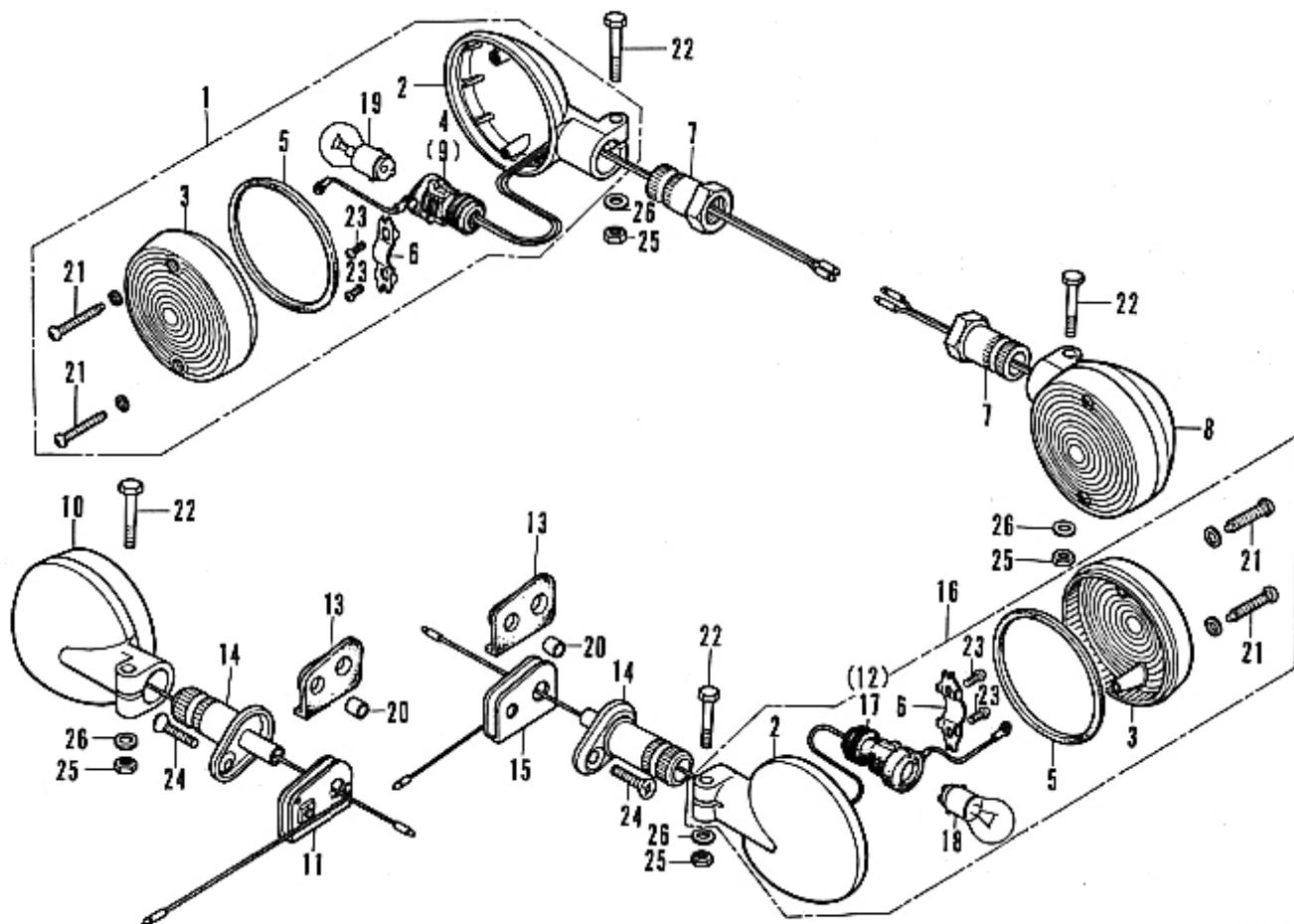
B390-38

F-22 Turn Signal Light

Ref. No.	Part No.	Description	Reqd. No. C1550F	Serial No.	Area code
1	33400-377-671	SIGNAL ASSY., RIGHT FRONT TURN (12V 32/3CP)	1		
2	33401-377-671	BASE, TURN SIGNAL	4		
3	33402-377-671	LENS, TURN SIGNAL	4		
4	33405-377-671	SOCKET COMP., RIGHT	1		
5	33406-377-671	PACKING, TURN SIGNAL LENS	4		
6	33407-377-671	HOLDER, TURN SIGNAL SOCKET	4		
7	33441-390-000	STAY, FRONT TURN SIGNAL	2		
8	33450-377-671	SIGNAL ASSY., LEFT FRONT TURN (12V 32/3CP)	1		
9	33455-377-671	SOCKET COMP., LEFT	1		
10	33600-374-671	SIGNAL ASSY., RIGHT REAR TURN (12V 32/3CP)	1		
11	33604-374-670	STOPPER, RIGHT TURN SIGNAL	1		
12	33605-374-671	SOCKET COMP., RIGHT REAR TURN SIGNAL	1		
13	33606-374-670	RUBBER, REAR TURN SIGNAL MOUNT	2		
14	33607-374-670	STAY, REAR TURN SIGNAL	2		
15	33609-374-670	STOPPER, LEFT REAR TURN SIGNAL	1		
16	33650-374-671	SIGNAL ASSY., LEFT REAR TURN (12V 32/3CP)	1		
17	33655-374-671	SOCKET COMP., LEFT REAR TURN SIGNAL	1		
18	34905-268-671	BULB, TURN SIGNAL (12V 25W)	2		
19	34906-313-671	BULB, TAIL & STOP LIGHT (12V 23/8W)	2		
20	RC108-061-000	COLLAR A, REAR FENDER	2		



F-22 Turn Signal Light

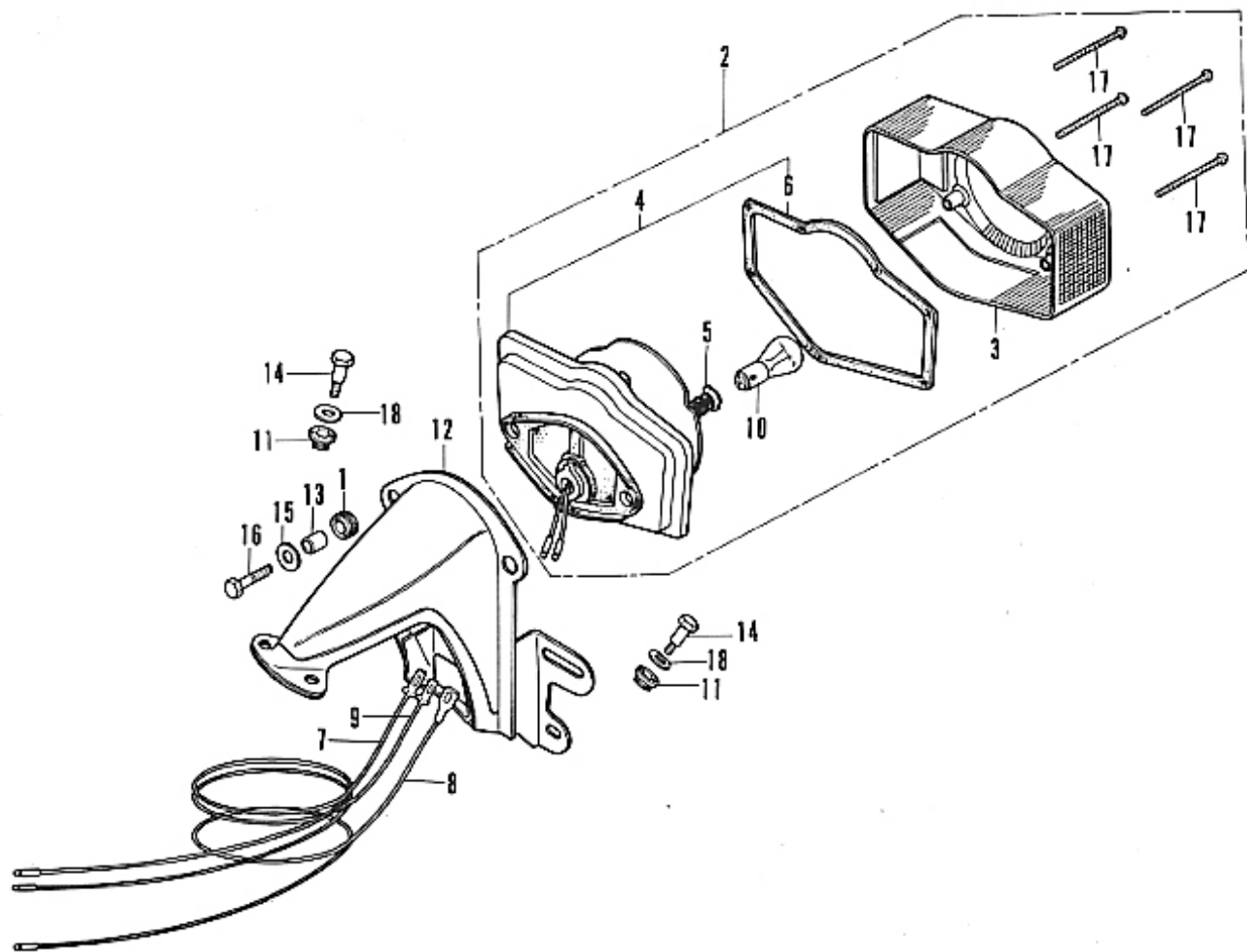


B390-38

F-22 Turn Signal Light

Ref. No.	Part No.	Description	Reqd. No. CB550F	Serial No.	Area code
21	90192-377-671	SCREW, PAN, 4X25	8		
22	93000-06035-02	BOLT, HEX., 6X35	4		
23	93500-03008-0H	SCREW, PAN, 3X8	8		
24	93700-06025-02	SCREW, OVAL 6X25	2		
25	94001-06000	NUT, HEX., 6MM	4		
26	94101-06000	WASHER, PLAIN, 6MM	4		

F-23 Tail Light

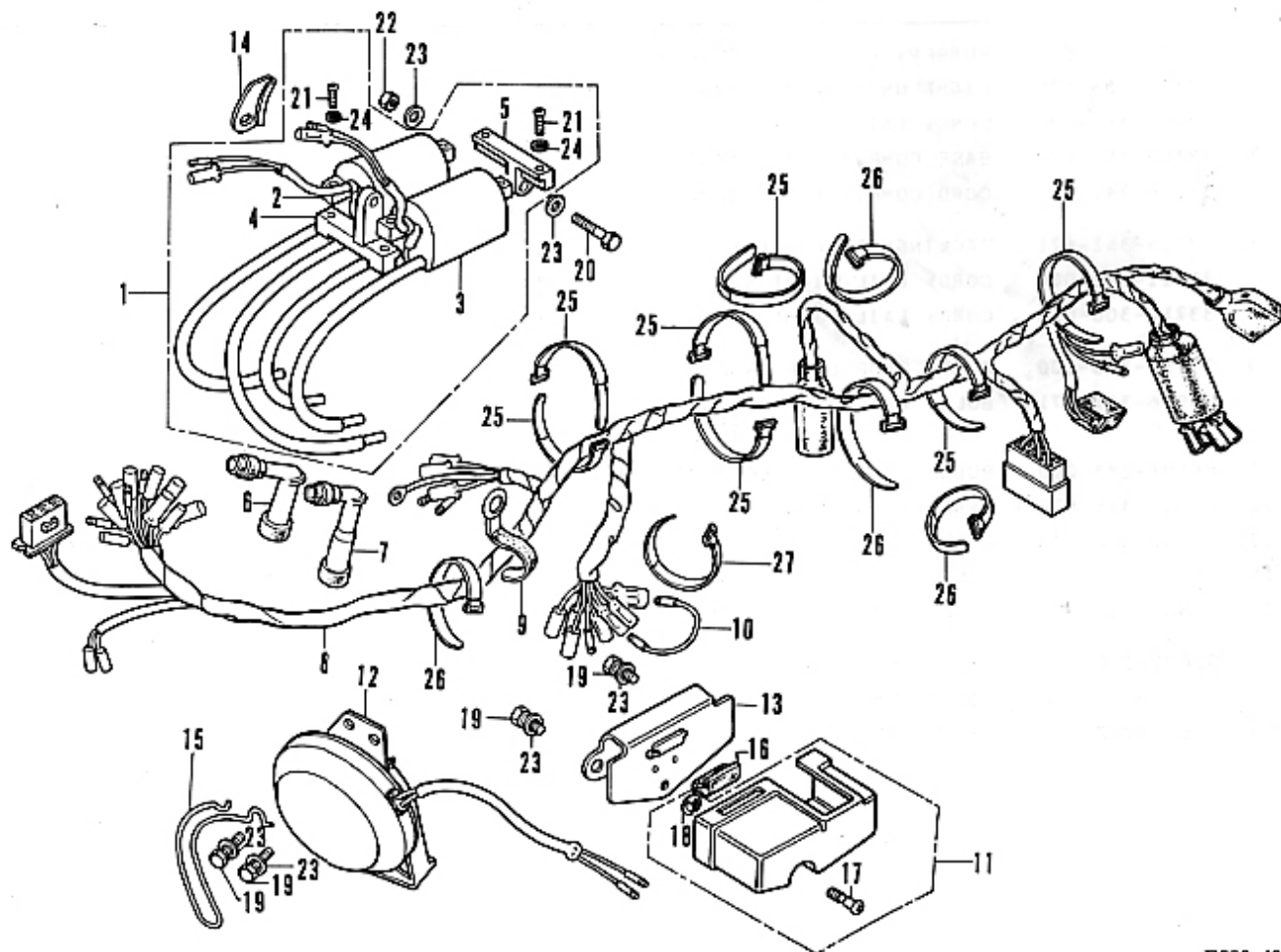


B390-39

F-23 Tail Light

Ref. No.	Part No.	Description	Reqd. No. CB550F	Serial No.	Area code
1	31403-300-000	RUBBER, REGULATOR CUSHION	2		
2	33701-354-670	LIGHT UNIT, TAIL (12V 32/3CP)	1		
3	33702-341-671	LENS, TAIL LIGHT	1		
4	33703-354-671	BASE COMP., TAIL LIGHT	1		
5	33708-341-671	CORD COMP., TAIL LIGHT	1		
6	33709-341-671	PACKING, TAIL LIGHT LENS	1		
7	33711-323-000	CORD, TAIL LIGHT SUB	1		
8	33712-300-003	CORD, TAIL LIGHT EARTH (STANLEY)	1		
9	33713-323-000	CORD, STOP LIGHT SUB	1		
10	34906-341-671	BULB, TAIL & STOP LIGHT (12V 32/3CP)	1		
11	80101-283-000	RUBBER, REAR FENDER CUSHION	4		
12	84701-341-670XM	BRACKET, NUMBER PLATE	1		
13	84706-378-000	COLLAR, TAIL LIGHT UNIT	2		
14	90162-292-000	BOLT, FRONT FENDER SETTING	4		
15	90581-342-000	WASHER, 20MM	2		
16	92000-05025-0A	BOLT, HEX., 5X25	2		
17	93500-04055-0B	SCREW, PAN, 4X55	4		
18	94101-08200	WASHER, PLAIN., 8MM	4		

F-24 Wire Harness • Ignition Coil • Horn

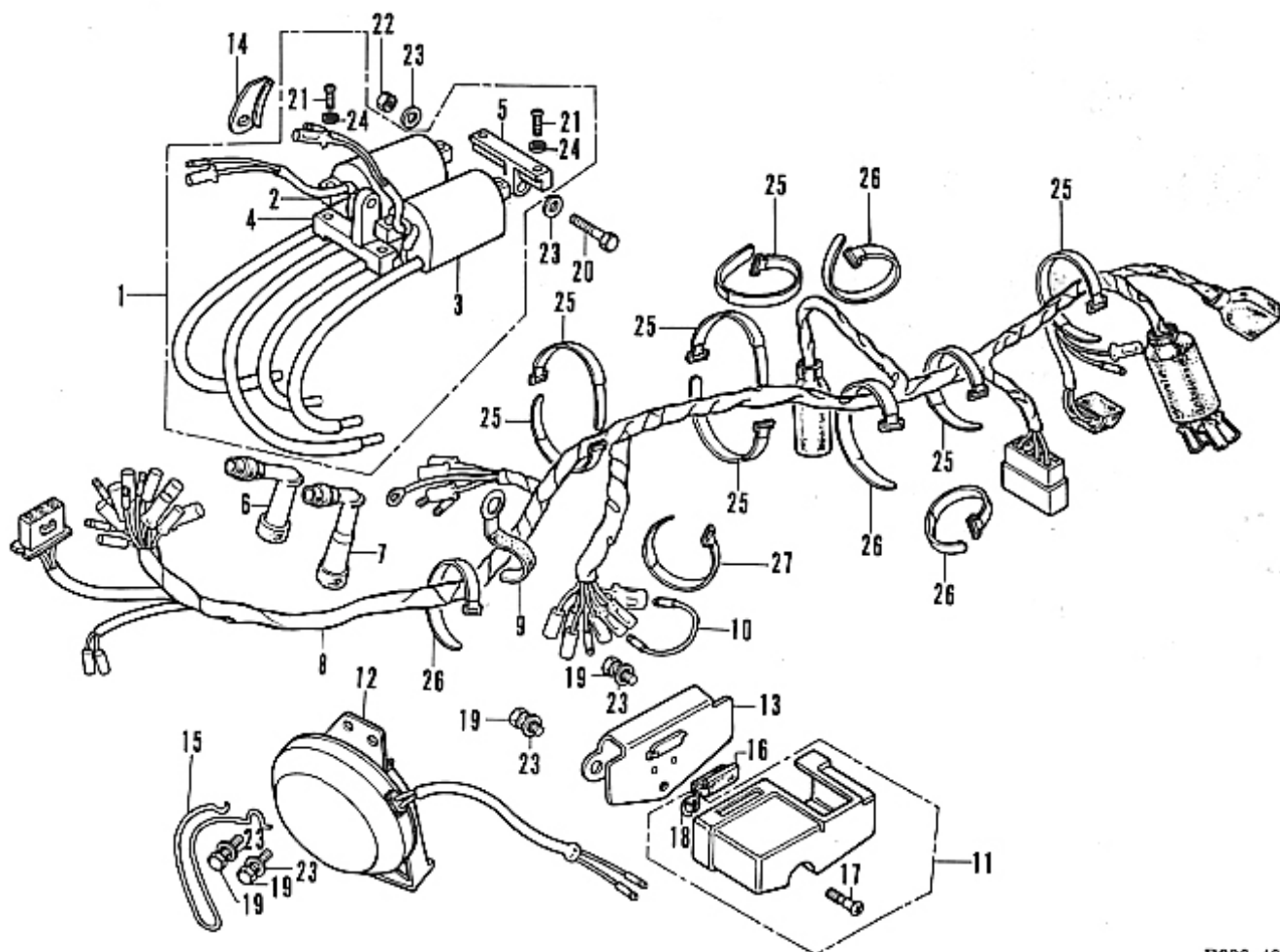


B390-40

F-24 Wire Harness • Ignition Coil • Horn

Ref. No.	Part No.	Description	Reqd. No. CB550F	Serial No.	Area code
1	30500-323-023	COIL ASSY., IGNITION	1		
2	30501-323-003	COIL, RIGHT IGNITION	1		
3	30502-323-003	COIL, LEFT IGNITION	1		
4	30511-300-000	BRACKET, IGNITION COIL	1		
5	30512-323-000	BRACKET B, IGNITION COIL	1		
6	30700-300-010	CAP ASSY. A, NOISE SUPPRESSER	2		
7	30701-323-013	CAP ASSY. B, NOISE SUPPRESSER	2		
8	32100-390-000	HARNESS WIRE	1		
9	32171-323-000	CLIP, WIRE HARNESS	1		
10	32200-390-670	SUB CORD, HARNESS	1		
11	32400-390-000	BOX, HARNESS	1		
12	38100-300-023	HORN ASSY. (MITSUBA)	1		
13	50107-390-000	PLATE HARNESS BOX	1		
14	50400-323-000	PROTECTOR, IGNITION COIL WIRE	1		
15	50462-323-000	CLAMP, TACHOMETER CABLE	1		
16	83621-333-000	GROMMET, SIDE COVER	1		
17	90088-612-000	SCREW, PAN, 5X12	1		
18	90601-816-000	CIR CLIP, 5MM	1		
19	92000-06012	BOLT, HEX., 6X12	4		
20	92000-06025	BOLT, HEX., 6X25	2		

F-24 Wire Harness • Ignition Coil • Horn



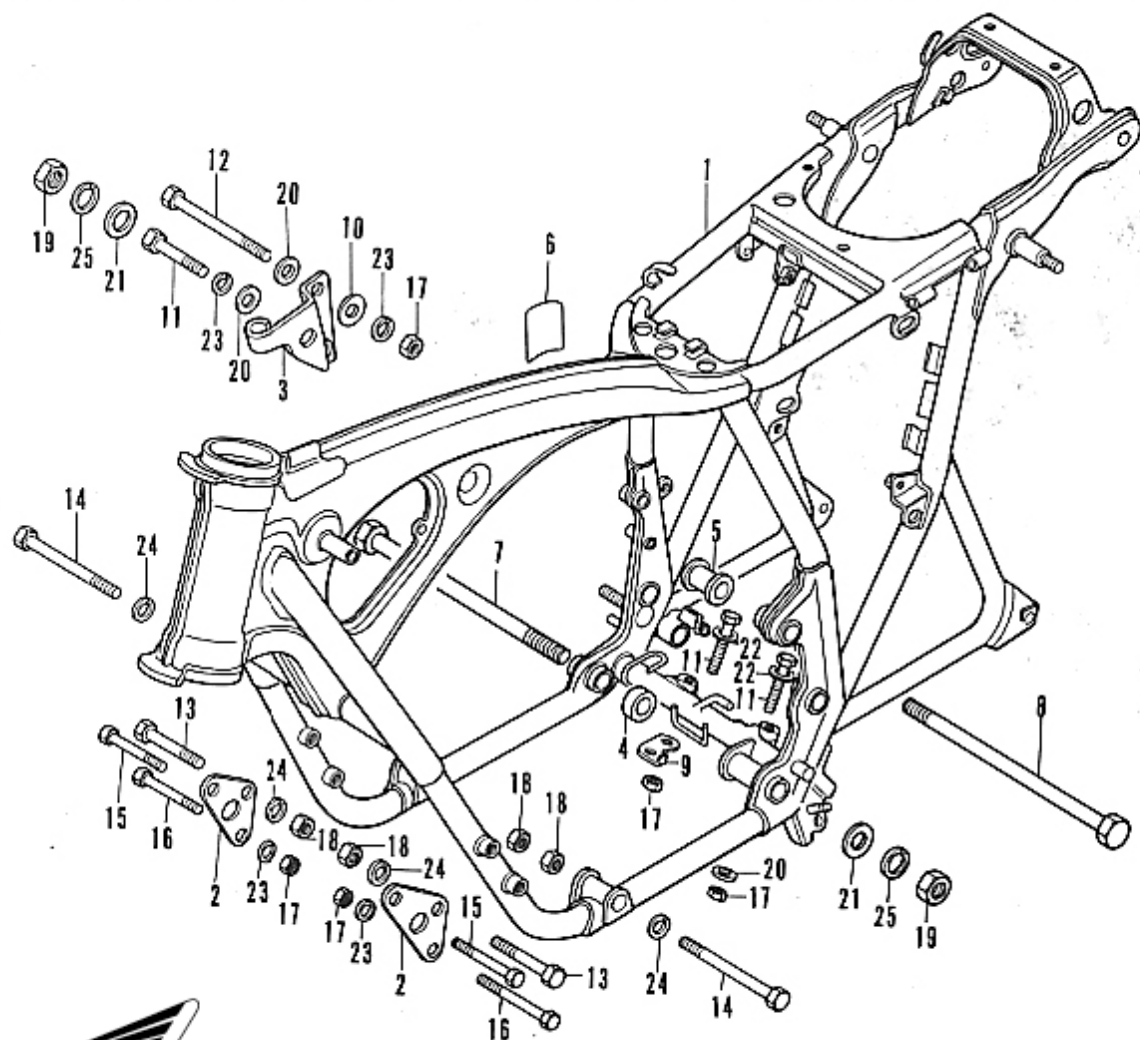
B390-40

F-24 Wire Harness • Ignition Coil • Horn

Ref. No.	Part No.	Description	Reqd. No. CB550F	Serial No.	Area code
21	93500-05020-0A	SCREW, PAN, 5X20	4		
22	94001-06000	NUT, HEX., 6MM	2		
23	94101-06000	WASHER, PLAIN, 6MM	8		
24	94111-05000	WASHER, SPRING, 5MM	4		
25	95014-61100	BAND A1, WIRE	7		
26	95014-61200	BAND A2, WIRE	4		
27	95014-61300	BAND A3, WIRE	1		



F-25 Frame Body



B390-41

F-25 Frame Body

Ref. No.	Part No.	Description	Reqd. No. C8550F	Serial No.	Area code
1	50100-390-6702A	BODY COMP., FRAME *NH-1*	1		
2	50351-323-010B	BRACKET, FRONT ENGINE HANGER	2		
3	50356-374-010	BRACKET, REAR ENGINE HANGER	1		
4	50357-323-010	COLLAR, RIGHT ENGINE UNDER SIDE	1		
5	50359-323-010	COLLAR, LEFT ENGINE UPPER	1		
6	87506-390-670	MARK, BATTERY CAUTION	1		
7	90107-390-000	BOLT, REAR ENGINE HANGER LOWER	1		
8	90108-323-000	BOLT, REAR ENGINE UPPER	1		
9	90514-323-000	WASHER, BATTERY BREATHER GUIDE	1		
10	90582-703-000	WASHER, 8MM	1		
11	92000-08040-0A	BOLT, HEX., 8X40	3		
12	92000-08100-0A	BOLT, HEX., 8X100	1		
13	92200-10050-0A	BOLT, HEX., 10X50	2		
14	92200-10080-0A	BOLT, HEX., 10X80	2		
15	93000-08050-0A	BOLT, HEX., 8X50	2		
16	93000-08055-0A	BOLT, HEX., 8X55	2		
17	94001-08000-0S	NUT, HEX., 8MM	7		
18	94030-10000	NUT, HEX., 10MM	4		
19	94030-12000	NUT, HEX., 12MM	2		
20	94101-08000	WASHER, PLAIN, 8MM	3		
21	94101-12000	WASHER, PLAIN, 12MM	2		
22	94102-08000	WASHER, PLAIN, 8MM	2		
23	94111-08000	WASHER, SPRING, 8MM	6		
24	94111-10000	WASHER, SPRING, 10MM	4		
25	94111-12000	WASHER, SPRING, 12MM	2		

Courtesy of
www.honda4fun.com



Honda4Fun
www.honda4fun.com

PART NO. INDEX

Part No.	Block	Part No.	Block	Part No.	Block	Part No.	Block
11000		13000		14520-323-C00	E-3	16015-323-C04	E-16
11000-374-000	E-11	13011-374-004	E-4	14611-323-C00	E-3	16016-390-C04	E-16
11202-323-000	E-11	13021-374-000	E-4	14711-107-C20	E-3	16018-323-C04	E-16
11203-323-010	E-11	13031-374-000	E-4	14721-323-C05	E-3	16023-323-C04	E-16
11207-323-000	E-11	13041-374-000	E-4	14751-107-C10	E-3	16028-323-C04	E-16
11210-323-000	E-10	13051-374-000	E-4	14761-107-C10	E-3	16029-323-C04	E-16
11331-390-000	E-6	13101-374-000	E-4	14771-107-C20	E-3	16030-323-C04	E-16
11341-374-000	E-9	13102-374-000	E-4	14775-107-C00	E-3	16031-323-C04	E-16
11353-363-000	E-9	13103-374-000	E-4	14776-107-C10	E-3	16035-390-C04	E-16
11394-390-000	E-6	13104-374-000	E-4	14781-107-C20	E-3	16036-323-004	E-16
11398-323-000	E-10	13105-374-000	E-4			16100-390-004	E-16
11631-323-000	E-8	13111-286-000	E-4	15000		16101-390-004	E-16
11632-323-003	E-8	13203-323-000	E-12	15100-390-C03	E-9	16102-390-004	E-16
11633-323-003	E-8	13204-323-000	E-12	15140-300-C10	E-9	16103-390-004	E-16
11691-323-000	E-8	13205-323-000	E-12	15145-300-C00	E-9	16104-390-004	E-16
		13206-323-000	E-12	15150-300-C00	E-10	16111-323-004	E-16
12000		13207-323-000	E-12	15150-374-C00	E-10	16211-323-000	E-2
12021-323-300	E-2	13213-323-003	E-12	15154-374-C00	E-10	16290-323-000	E-16
12023-323-300	E-2	13214-300-000	E-12	15155-323-C00	E-9	16950-374-671	F-12
12100-374-000	E-4	13215-323-003	E-12	15331-323-C03	E-9	16951-374-671	F-12
12191-374-000	E-4	13216-323-003	E-12	15332-300-C00	E-11	16952-341-671	F-12
12200-374-000	E-2	13217-323-003	E-12	15411-300-C10	E-10		
12209-323-005	E-3	13218-323-003	E-12	15412-300-C24	E-10	17000	
12239-323-000	E-4	13300-323-000	E-12	15414-300-C00	E-10	17210-390-003	F-15
12241-323-000	E-2	13315-323-C00	E-12	15415-300-C00	E-10	17214-390-000	F-15
12242-323-000	E-2	13316-323-C00	E-12	15420-300-C20	E-10	17215-390-000	F-15
12251-374-C00	E-2	13317-323-C00	E-12	15473-300-300	E-10	17216-323-020	F-15
12310-323-000	E-1	13318-323-C00	E-12	15474-300-310	E-10	17216-390-000	F-15
12320-374-000	E-1	13491-283-C00	E-14	15477-300-300	E-10	17220-390-000	F-15
12329-323-000	E-1	13492-283-C00	E-14	15650-323-C00	E-6	17221-390-300	F-15
12330-323-000	E-1			15772-292-C10	E-15	17233-390-003	F-15
12335-323-000	E-1	14000		15772-551-C00	E-1	17240-390-000	F-15
12336-323-000	E-1					17242-390-000	F-15
12361-300-C00	E-1	14101-323-C00	E-3	16000		17247-303-000	F-14
12391-323-000	E-1	14321-323-C00	E-3	16010-323-C04	E-16	17255-323-000	F-15
12431-323-000	E-1	14401-323-C03	E-3	16011-329-C04	E-16	17256-323-000	E-2
12451-323-000	E-1	14431-324-C00	E-3	16012-390-C04	E-16	17310-323-000B	F-15
		14451-323-C10	E-3	16013-329-C04	E-16	17317-323-010	F-15
		14500-323-C00	E-3	16014-323-C04	E-16	17318-323-000	F-15
		14501-323-C00	E-3			17319-323-000	F-15

PART NO. INDEX

Part No.	Block	Part No.	Block	Part No.	Block	Part No.	Block
17335-323-000	F-15	22401-374-000	E-7	24300-374-000	E-15	30000	
17350-374-003	F-15	22710-374-010	E-6	24302-374-000	E-15		
17351-374-003	F-15	22815-374-000	E-6	24305-374-000	E-15	30200-323-C05	E-5
17352-374-003	F-15	22821-116-000	E-6	24421-230-000	E-15	30200-323-154	E-5
17353-374-003	F-15	22831-333-010	E-6	24430-390-000	E-15	30201-300-015	E-5
17358-374-000	F-15	22850-333-000	E-7	24433-323-010	E-15	30201-300-154	E-5
17359-374-000	F-15	22870-374-000	F-1	24434-286-020	E-15	30203-300-C05	E-5
17526-390-000	F-12			24435-323-020	E-15	30203-300-154	E-5
17525-390-000ZA	F-12	23000		24440-390-000	E-15	30204-300-C05	E-5
17525-390-000ZB	F-12			24610-374-000	E-15	30204-300-154	E-5
17531-390-000ZA	F-12	23100-323-000	E-13	24641-292-000	E-15	30205-C03-C05	E-5
17611-283-010	F-12	23102-323-000	E-13	24651-286-000	E-15	30205-300-154	E-5
17613-286-000	F-12	23103-374-000	E-7	24700-350-000	F-17	30215-300-C05	E-5
17620-390-000	F-12	23105-323-000	E-7			30215-300-154	E-5
17631-329-000	F-12	23111-323-010	E-13	25000		30220-323-C05	E-5
17735-390-000	F-12	23114-323-000	E-13			30220-323-154	E-5
17738-390-000	F-12	23121-323-010	E-13	25100-374-003	E-14	30233-300-C00	E-5
17910-300-040	F-1	23131-323-003	E-13			30250-300-C05	E-5
17920-323-000	F-1	23210-374-000	E-14	28000		30250-300-154	E-5
		23220-374-000	E-14			30370-323-C00	E-5
18000		23420-374-000	E-14	28101-323-C00	E-13	30372-300-300	E-5
		23431-374-000	E-14	28106-323-C00	E-13	30500-323-C23	F-24
18231-323-000	F-16	23441-286-020	E-14	28111-363-C00	E-13	30501-323-C03	F-24
18233-107-000	F-16	23450-350-C00	E-14	28112-323-C00	E-13	30502-323-C03	F-24
18251-350-000	F-16	23461-286-030	E-14	28120-323-C00	E-13	30511-300-C00	F-24
18300-390-000	F-16	23471-286-010	E-14	28125-323-C00	E-13	30512-323-C00	F-24
18325-390-000	F-16	23480-350-000	E-14	28126-323-C00	E-13	30700-300-C10	F-24
18326-390-000	F-16	23491-374-000	E-14	28211-323-C00	E-14	30701-323-C13	F-24
18327-390-000	F-16	23801-300-C10	E-14	28215-216-C00	E-14		
18350-390-000	F-16	23811-292-000	E-14	28221-310-C10	E-14		
		23931-323-004	E-14	28223-216-C00	E-14	31000	
22000				28251-323-C00	E-14		
		24000		28258-310-C10	E-14	31101-323-C05	E-8
22100-390-000	E-7			28261-323-C00	E-14	31102-323-C25	E-8
22116-390-300	E-7	24211-374-000	E-15	28293-250-C00	F-17	31103-323-C05	E-8
22120-390-000	E-7	24212-390-000	E-15	28300-390-C00	F-17	31200-323-C13	E-9
22201-286-C10	E-7	24213-374-000	E-15	28311-329-C00	F-17	31201-292-158	E-9
22202-390-000	E-7	24261-283-000	E-14	28321-390-C00	F-17	31204-292-158	E-9
22321-374-000	E-7			28333-300-C00	F-17	31206-296-158	E-9
22350-390-000	E-7	24261-374-000	E-15			31290-323-C00	E-9
22360-390-000	E-7	24263-286-000	E-15			31282-323-300	E-9
						31400-300-C35	F-14

Courtesy of

Honda4Fun

PART NO. INDEX

Part No.	Block	Part No.	Block	Part No.	Block	Part No.	Block
31403-300-C00	F-23	33405-377-671	F-22	35500-333-014	E-9	40543-390-000	F-10
31403-323-C00	F-14	33406-377-671	F-22	35752-323-000	E-9		F-11
31700-124-C03	F-14	33407-377-671	F-22	35753-323-000	E-9	40548-268-000	F-19
31700-333-008	F-14	33441-390-000	F-22	35850-375-000	F-14		
		33450-377-671	F-22	35856-286-010	F-14	41000	
32000		33455-377-671	F-22				
		33600-374-671	F-22	37000		41201-374-000	F-11
32100-390-000	F-24	33604-374-670	F-22			41211-323-000	F-11
32105-390-000	F-14	33605-374-671	F-22	37200-374-671	F-3	41231-323-020	F-11
32111-323-000	E-6	33606-374-670	F-22	37200-374-672	F-3	41242-323-000	F-11
	E-11	33607-374-670	F-22	37211-390-000	F-3	41243-323-000	F-11
	F-5	33609-374-670	F-22	37220-390-003	F-12		
32123-390-000	F-4	33650-374-671	F-22	37221-390-000	F-12	42000	
32171-323-000	F-24	33655-374-671	F-22	37235-323-700	F-3		
32200-390-670	F-24	33701-354-670	F-23	37236-323-700	F-3	42301-300-C10	F-11
32400-390-000	F-24	33702-341-671	F-23	37237-323-700	F-3	42311-390-C00	F-11
32401-323-000	F-14	33703-354-671	F-23	37238-323-700	F-3	42313-390-C00	F-10
32411-253-000	F-14	33708-341-671	F-23	37240-323-773	F-3	42601-323-C30	F-11
32412-323-000	F-14	33709-341-671	F-23	37240-323-774	F-3	42610-323-C00	F-11
32601-323-000	F-14	33711-323-000	F-23	37243-323-700	F-3	42620-323-C30	F-11
32700-390-000	F-3	33712-300-003	F-23	37244-307-670	F-3	42625-283-C00	F-11
32906-028-000	E-1	33713-323-000	F-23	37246-323-700	F-3	42701-293-C03	F-11
32983-011-000	F-7	33741-340-670	F-2	37260-390-000	F-3	42711-375-671	F-11
32985-300-000	F-21	33743-375-000	F-2	37261-300-000	F-3	42712-300-C03	F-11
				37600-390-008	F-3	42713-268-C03	F-11
33000		34000					
				38000		43000	
33100-341-701	F-2	34902-259-000	F-3				
33101-300-673	F-2	34905-268-671	F-22	38100-300-023	F-24	43100-374-C00	F-10
33103-300-003	F-2	34906-313-671	F-22	38200-377-005	F-14	43102-319-C00	F-10
33107-300-003	F-2	34906-341-671	F-23	38300-292-670	F-14	43120-283-C00	F-10
33117-001-003	F-2			38306-107-670	F-14	43141-374-C00	F-10
33121-300-672	F-2	35000		38400-341-674	F-7	43145-374-C00	F-10
33125-292-670	F-2					43151-346-C00	F-10
33128-292-670	F-2	35010-377-670	F-3	40000		43411-374-C00	F-10
33130-341-701	F-2	35130-377-670	F-1			43431-286-C10	F-19
33153-300-671	F-2	35200-390-671	F-1	40510-390-000	F-19	43434-286-C00	F-10
33321-341-701	F-2	35350-292-003	F-17	40513-310-000	F-6	43451-323-C10	F-17
33400-377-671	F-22	35350-300-016	F-5	40514-310-000	F-6		
33401-377-671	F-22	35357-011-000	F-17	40530-341-305	F-19		
33402-377-671	F-22	35360-341-000	F-1	40531-341-305	F-19		

PART NO. INDEX

Part No.	Block	Part No.	Block	Part No.	Block	Part No.	Block
44000		45117-300-020	F-8	50332-323-000	F-14	51521-375-000	F-7
44301-300-000	F-9	45119-300-020	F-8	50351-323-0108	F-25	51501-323-000	F-7
44311-300-000	F-9	45120-323-020	F-9	50356-374-010	F-25	51602-390-000	F-7
44601-300-040	F-9	45125-300-003	F-5	50357-323-010	F-25	51606-390-000	F-7
44606-283-000	F-9	45126-390-003	F-5	50359-323-010	F-25	51611-300-000	F-7
	F-11	45127-323-000	F-5	50400-323-000	F-24	51622-390-000	F-7
44606-300-003	F-9	45128-323-020	F-8	50462-323-000	F-24		
44607-283-000	F-9	45134-250-000	F-10	50500-390-300	F-18	52000	
	F-11	45140-323-670	F-8	50523-300-010	F-18		
44607-300-003	F-9	45146-300-000	F-5	50526-300-000	F-18	52108-457-300	F-19
44608-283-000	F-9	45224-579-013	F-8	50540-390-000	F-18	52110-390-000ZA	F-19
	F-11	45225-579-013	F-8	50548-356-700	F-18	52141-390-000	F-19
44609-283-000	F-9	45451-283-000	F-6	50549-356-700	F-18	52144-362-000	F-19
	F-11	45465-341-700	F-1	50603-033-000	F-18	52400-390-003	F-20
44620-300-020	F-9	45500-369-671	F-5	50615-390-000	F-18	52401-323-000	F-20
44641-375-000	F-9	45513-341-771	F-5	50616-390-000	F-18	52403-312-000	F-20
44642-300-020	F-9	45517-300-003	F-5	50617-283-000	F-18	52410-390-003	F-20
44643-300-000	F-9	45520-300-000	F-5	50619-375-000	F-18	52421-300-000XW	F-20
44701-300-013	F-9	45521-300-010	F-5	50620-377-000	F-18	52422-390-003	F-20
44711-375-671	F-9	45522-300-010	F-5	50630-390-000	F-18	52424-331-003	F-20
44712-300-003	F-9	45526-341-000	F-5	50640-390-000	F-18	52458-329-000	F-20
44713-300-003	F-9	45527-300-000	F-5	50641-390-000	F-18	52459-312-003	F-20
44800-323-000	F-9	45530-377-305	F-5	50642-390-000	F-18	52484-292-000	F-20
44830-390-000	F-3			50661-369-000	F-18	52517-358-771	F-20
44831-323-000	F-3	46000		50710-377-000	F-18		
				50711-374-670	F-18	53000	
45000		46500-390-000	F-17	50712-374-670	F-18		
		46514-390-000	F-17	50712-377-000	F-18	53100-390-000	F-4
		46515-390-000	F-17	50715-377-000	F-18	53124-250-000	F-4
						53141-300-010	F-1
45100-390-003	F-8	50000				53165-342-670	F-1
45101-323-013	F-8			51000		53166-342-670	F-1
45102-323-003	F-8	50100-390-670ZA	F-25	51400-390-003	F-7	53170-369-003	F-5
45104-317-700	F-8	50107-390-000	F-24	51401-390-003	F-7	53190-369-700	F-1
45105-390-003	F-8	50157-390-000	F-17	51410-390-003	F-7	53192-268-000	F-1
45105-390-006	F-8	50223-323-010	F-13	51421-375-000	F-7	53200-390-000ZA	F-4
45106-390-003	F-8	50301-268-305	F-4	51430-390-003	F-7	53211-268-305	F-4
45106-390-006	F-8	50302-268-305	F-4	51432-390-003	F-7	53212-250-305	F-4
45107-323-020	F-8	50325-323-040	F-14	51437-329-010	F-7	53215-250-000	F-4
45108-300-003	F-8	50330-390-000	F-14	51466-375-000	F-7	53220-266-000	F-4
45115-390-000	F-8	50331-323-000	F-14	51500-390-003	F-7	53230-390-000	F-4
45116-323-020	F-8						

Courtesy of

Honda4Fun

PART NO. INDEX

Part No.	Block	Part No.	Block	Part No.	Block	Part No.	Block
53235-3C0-000	F-4	83000		90000		90354-268-000	F-19
61000		83551-3C0-C00	F-13	90011-323-000	E-11	90425-3C0-000	E-1
61100-390-670	F-6		F-14	90012-3C0-000	E-3	90433-283-000	E-13
61301-375-003B	F-2	83600-390-C00ZA	F-14	90014-333-000	E-8	90442-035-000	E-3
61302-3C0-000	F-2	83600-390-C00ZB	F-14	90015-286-000	E-15	90451-216-000	E-14
61303-336-C00	F-2	83618-323-C00	F-14	90033-323-000	E-11	90451-286-000	E-14
61304-292-C00	F-2	83621-333-C00	F-24	90034-323-000	E-11	90451-292-000	E-1
61309-303-610	F-15	83700-390-C00ZA	F-14	90043-323-300	E-2	90452-323-000	E-2
		83700-390-C00ZB	F-14	90044-323-300	E-2	90453-286-003	E-14
				90081-246-000	E-3	90454-2C0-000	E-14
77000		84000		90084-323-000	E-11	90455-374-000	E-7
77103-313-C00	F-13	84100-390-C00	F-21	90088-612-000	F-24	90456-323-000	E-13
77200-390-C00	F-13	84701-341-670XW	F-23	90107-390-000	F-25	90457-5C0-000	E-14
77201-323-C00	F-13	84705-310-C00	F-15	90108-283-000	F-18	90458-292-000	E-14
77202-390-C00	F-13	84706-286-C00	F-14	90108-323-000	F-25	90458-323-010	E-7
77204-286-C20	F-13		F-18	90114-268-020	F-1	90459-323-010	E-7
77204-292-C00	F-13	84706-378-C00	F-23	90114-3C0-000	F-5	90460-323-010	E-7
77204-312-C00	F-13			90116-283-010	F-7	90461-286-000	E-14
77220-340-C11	F-13	87000		90119-283-000	F-10	90462-323-000	E-14
77222-340-C01	F-13				F-11	90471-333-000	E-6
77229-340-C01	F-13	87121-390-C00	F-12	90120-377-000	F-2	90481-250-000	E-3
77230-377-C03	F-13	87122-390-C00	F-12	90121-390-000	F-19	90485-001-000	E-1
77250-342-300	F-13	87124-390-C00	F-14	90122-3C0-020	F-9	90485-025-000	E-2
77251-342-C00	F-13	87311-516-C00	F-12	90123-3C0-000	F-7		E-11
77270-390-C00	F-13	87504-028-670	F-19	90125-323-000	F-11	90501-310-000	F-1
		87505-390-670	F-21	90127-323-000	F-10	90503-283-000	F-4
80000		87506-390-670	F-25	90133-286-000	F-19	90512-3C0-000	F-21
80100-323-670XW	F-21	87560-375-680A	F-12	90145-3C0-000	F-5	90514-323-000	F-25
80101-283-C00	F-23			90162-292-000	F-23	90514-7C0-000	F-13
80101-390-C00	F-21	88000		90165-323-000	F-8	90523-292-000	F-10
80102-323-C00	F-21			90192-377-671	F-22	90524-030-000	F-10
80105-061-C00	F-3	88100-333-004	F-1	90203-611-000	F-13	90524-323-000	F-11
	F-14	88120-333-004	F-1	90206-250-000	E-3	90526-268-000	F-19
80109-061-C00	F-3			90236-3C0-000	E-2	90532-323-000	E-9
	F-14	89000		90305-3C0-000	F-9	90543-273-000	F-7
	F-22			90306-268-000	F-10	90544-283-000	F-7
89010-323-010	F-13			90307-263-000	F-10	90545-3C0-000	F-5
89101-3C0-010	F-13				F-11	90545-323-700	F-3
89216-323-000	F-13			90309-315-000	F-20	90555-283-000	F-4
				90321-292-000	F-1	90555-7C0-000	E-13
						90561-098-950	F-3

Courtesy of

Honda4Fun

www.hondafour.com

www.honda4fun.com

PART NO. INDEX

Part No.	Block	Part No.	Block	Part No.	Block	Part No.	Block
90581-342-000	F-23	91302-250-C10	E-9		F-24	93500-03008-0H	F-22
90581-701-000	F-14	91302-300-C00	F-9	92000-0602E	F-5	93500-03010-0A	E-16
90582-703-000	F-25	91304-286-C00	E-4		F-18	93500-03012-3B	F-2
90601-916-000	F-24	91305-323-C00	E-3		F-21	93500-04010-0A	E-16
90602-259-010	E-13	91306-703-C00	E-14	92000-06035	F-17	93500-04020-0A	F-15
	E-14	91309-035-C00	E-1	92000-C604C	E-1	93500-04055-0B	F-23
90753-283-000	F-11		E-4		F-15	93500-C5006-0A	E-2
90899-323-610	F-21	91309-300-C00	E-9	92000-06045	E-1	93500-C5006-0G	F-3
		91315-044-C00	E-9	92000-0605C	E-1	93500-05012-0A	E-5
91000			E-11	92000-09016-0A	F-16		E-16
91001-016-008	E-13	91316-300-C05	E-10	92000-08020-0A	F-4	93500-05016-0A	E-16
91002-283-003	E-14	91318-300-C13	E-2	92000-09028-0A	F-17	93500-05016-0B	F-2
91002-296-008	E-14	91319-300-C00	E-11	92000-0904C-0A	F-25	93500-C5020-0A	E-2
91007-323-000	E-13	91319-323-C00	E-1	92000-09065-0A	F-14		F-3
91009-374-003	E-15	91354-702-C00	E-6	92000-0910C-0A	F-25		F-24
91022-374-003	E-14			92000-10032-0A	F-18	93500-C5025-0A	F-1
91101-259-000	E-13	92000		92000-10035-0A	F-4	93500-05032-0A	F-1
91103-374-003	E-14				F-18	93500-06012	E-9
91201-262-003	E-15	92000-05025-0A	F-23	92020-0602C	E-15		E-16
91201-300-003	E-12	92000-0601C	F-7	92020-06022	E-7	93500-06016	E-1
91201-323-005	E-12	92000-06012-02	E-9	92025-06025	F-16		E-8
91202-216-000	E-15	92000-06012	E-13	92200-06032	E-15		F-14
91204-266-003	E-6		E-14	92200-08035-0A	F-6	93500-06018	F-18
91204-286-005	E-6		F-13	92200-10050-0A	F-25	93500-06020	E-1
91205-283-010	E-14		F-15	92200-10080-0A	F-25		E-9
91206-333-003	E-6		F-24	92700-08050-3C	F-7	93500-06025	E-1
91207-374-000	E-14	92000-06014	E-13	92800-12000	E-10	93500-06028	E-8
91211-296-003	E-14		E-16			93500-06032	E-6
91252-300-003	F-9		F-19	93000			E-8
91255-300-033	F-7	92000-060	E-9				E-9
91259-323-000	F-8		F-13	93000-06035-02	F-22	93500-06035	E-9
91261-323-000	F-11		F-15	93000-08050-0A	F-25	93500-06040	E-1
91262-323-000	F-11	92000-0602	E-15	93000-08055-0A	F-25	93500-06055	E-9
91301-200-000	E-2		F-6	93000-08056-0B	F-4	93500-06065	E-8
91301-268-020	E-9		F-10	93000-08074-0B	F-4	93500-06075	E-6
91301-323-000	E-4		F-14	93000-08080-0B	F-21	93500-06080	E-6
91301-704-000	E-6		F-17	93000-10032-0A	F-20	93600-06016-07	F-13
91302-001-020	E-1	92000-06025-02	F-5	93100-08040-0B	F-4	93600-06016	E-16
91302-001-C20	E-2	92000-06025	F-8	93200-08028-0A	F-17	93600-06018	E-13
91302-028-C00	E-10		F-15	93300-06012-0B	F-3	93700-05015-0A	F-9
						93700-06010-02	E-1

Courtesy of

www.honda4fun.com

Honda4Fun

www.honda4fun.com

PART NO. INDEX

Part No.	Block	Part No.	Block	Part No.	Block	Part No.	Block
937C0-06025-02	F-22	941C1-C5000	E-5		F-2	94302-1016C	E-2
937C0-06032	E-5	94101-C5700	F-3		F-3		E-11
939C1-25080	F-13	94101-C6000	E-2		F-24	94303-0814C	E-13
939C1-25310	E-11		E-6	94111-0600C	E-9	94305-40163	F-18
939C1-26110	E-11		E-9		E-16	94510-1200C	E-14
939C2-24280	F-3		F-5		F-3	94510-1800C	E-14
			F-8		F-5	94510-2000C	E-7
940C0			F-13		F-8	94510-2515C	E-7
			F-14		F-12	94510-3000C	E-11
94001-C5000-0S	E-16		F-15		F-13	94601-1500C	E-4
94001-C6000	E-2		F-18		F-15	94609-5000C	F-7
	E-3		F-19		F-16		
	E-6		F-21		F-19	95000	
	F-1		F-22	94111-C670C	F-3		
	F-8		F-24	94111-06800	F-14	95001-3533C-40	E-16
	F-12	941C1-C6200	E-9	94111-0900C	F-3	95001-5517C-40	E-16
	F-13	94101-C670C	F-3		F-7	95001-55280-40	E-16
	F-16	94101-C600C	F-3		F-8	95001-55510-40	F-12
	F-22		F-7		F-16	95002-02070	E-16
	F-24		F-8		F-25	95002-0210C	E-16
94001-C6070	F-3		F-14	94111-1000C	F-2		F-12
94001-C8000-0S	F-3		F-18		F-18	95002-70000	E-10
	F-9		F-19		F-19	95005-12420-20	E-1
	F-10		F-25		F-25	95011-4000C	F-17
	F-14	941C1-C8200	F-21	94111-1200C	F-18	95011-61000	F-16
	F-19		F-23		F-25	95012-17000	F-14
	F-25	941C1-1C200	F-2	94201-1615C	F-17	95014-22200	F-4
94001-C8020-0S	F-4		F-20		F-18	95014-41000	F-7
94001-1C000-0S	F-18	941C1-12000	F-18	94201-1622C	F-8	95014-61100	F-24
94002-C6000	F-5		F-25	94201-2015C	E-6	95014-61200	F-24
	F-17	941C2-C8000	F-4	94201-2018C	F-19	95014-61300	F-24
94002-C6080	F-14		F-25	94201-2520C	F-10	95014-71702	F-18
94002-1C000-0S	F-18	94102-1000C	F-4	94201-2525C	F-18	95014-72402	F-18
	F-20		F-8	94201-4030C	F-10	95014-73300	F-17
94021-C6020	F-3		F-18	94251-0500C	F-2	95015-32001	F-17
94030-C6000	F-7	94108-1500C	F-9	94251-0600C	F-13	95015-42000	F-17
94030-1C000	F-11	94109-1200C	E-10	94251-C800C	F-10	95015-52000	F-17
	F-25	94111-C300C	E-16	94301-0814C	E-6	95015-83000	F-18
94030-12000	F-18	94111-C400C	E-16		E-8	95020-11300	F-4
	F-25	94111-C500C	E-16	94301-1218C	E-4	95700-06022	E-3
941C1-C400C	F-2		F-1	94302-0610C	E-9	95700-06032	E-1



PART NO. INDEX

Part No.	Block	Part No.	Block	* Part No.	Block	Part No.	Block
	E-2	99002-13500	F-13				
	E-10	99003-10000	F-13				
	E-11	99003-20000	F-13				
95700-06040	E-11	99003-30000	F-13				
95700-06050	E-11	99003-40000	F-13				
95700-06055	E-5	99003-50000	F-13				
	E-9	99005-C2000	F-13				
	E-11	99006-12000	F-13				
95700-06065	E-1	99006-26000	F-13				
	E-2	99007-45000	F-13				
95700-06100	E-11	99124-C76-03800	E-16				
95700-06105	E-11	99202-60109-80	E-16				
95700-08100	E-11						
96000							
96100-62050	E-13						
96140-63020-10	F-9						
96140-63040-10	F-11						
96140-63050-10	F-11						
96201-80000	F-19						
96211-08000	F-4						
	F-17						
97000							
97285-69135-10	F-11						
97686-69134-10	F-11						
98000							
98069-57711	E-2						
98069-57723	E-2						
98200-20700	F-14						
98200-21500	F-14						
98202-22250	F-14						
99000							
99001-10120	F-13						
99001-14170	F-13						



PRINTED IN JAPAN