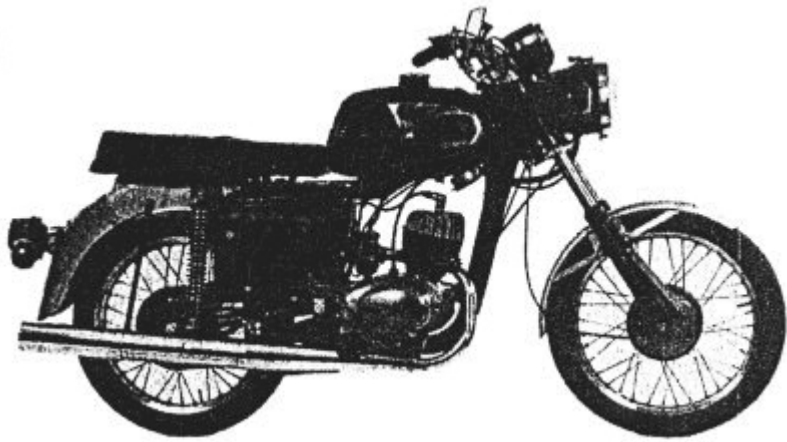


SPARE PARTS



Remarks

[Index](#)

1. All orders and letters concerning spare parts for TS 125 and TS 150 models are to be directed to

VEB Motorradwerk Zschopau
Spare Part Dept.
9363 Gornau/Erzgeb.

If it deals with electrical spare parts we ask you to order them from

VEB Fahrzeugelektrik Thalheim
Betrieb des VEB Kombinat Fahrzeugelektrik Ruhla
9154 Niederdorf
Teichstraße
GDR

The bold-faced parts of this list are to be used for engines MM 125/3 only. All parts quoted in this list without any hint in the column 'remarks' are suitable for both types (TS 125 and TS 150).

2. To avoid delays we ask you to place your spare part orders separated from other letters.
3. We ask you to place your orders on neutral paper sheets with spaces of 1 1/2 lines from each other.
4. Should any inquiries or claims be necessary we ask you to quote our red-edged invoice no.
5. We do not supply spare parts to private persons; inquiries in this matter as well as concerning repair work we shall forward to our General Importers.

6. All further conditions you will see from our price list.
7. If you are in need of varnished spare parts you can order them from our Spare Part Department in accordance with the table of colours as mentioned below. Please put in fraction stroke after the ref.no. the figures in question:

00 black, bright	06 marble white
01 green	07 red
02 silver coloured	OL dark blue
03 blue	OM black, pale
04 yellow	ON flame red
	OP olympic blue
	OR billards green

8. Wear and tear parts

At top of the column remarks you will find the sign x. The figures quoted below at the end of the lines tell you the minimum volume and are to be seen for 100 bikes. They also include spare parts damaged occasional accidents.

Index

Chassis

[Table 1](#) Frame, Centre Stand

[Table 2](#) Saddle Carrier, Swinging Fork

[Table 3](#) Front Suspension

[Table 3a](#) Front Suspension

[Table 4](#) Handlebar, Control Cables

[Table 5](#) Rear Suspension

[Table 6](#) Front Wheel, Hub and Brake Drum, Brake

[Table 7](#) Rear Wheel, Hub and Brake Drum, Brake

[Table 8](#) Rear Wheel Drive, Speedometer Drive

[Table 9](#) Petrol Tank, Petrol Tap

[Table 10](#) Silencer

[Table 11](#) Front Mudguard

[Table 12](#) Rear Mudguard

[Table 13](#) Panels, Air Silencer, Air Filter

[Table 14](#) Dual Seat, Accessories, Tools

[Table 15](#) Special Accessories

Electrical Equipment

[Table 16](#) Battery, Dynamo, Regulator Cut-Out

[Table 17](#) Headlamp, Stop and Tail Lamp, Bulbs

[Table 18](#) Horn, Trafficator Device, Speedometer, Revolution Counter

Engine

[Table 19](#) Crankcase, Revolution Counter Drive

[Table 20](#) Cylinder, Piston, Crankshaft

[Table 21](#) Gearchange, Kickstarter

[Table 22](#) Clutch

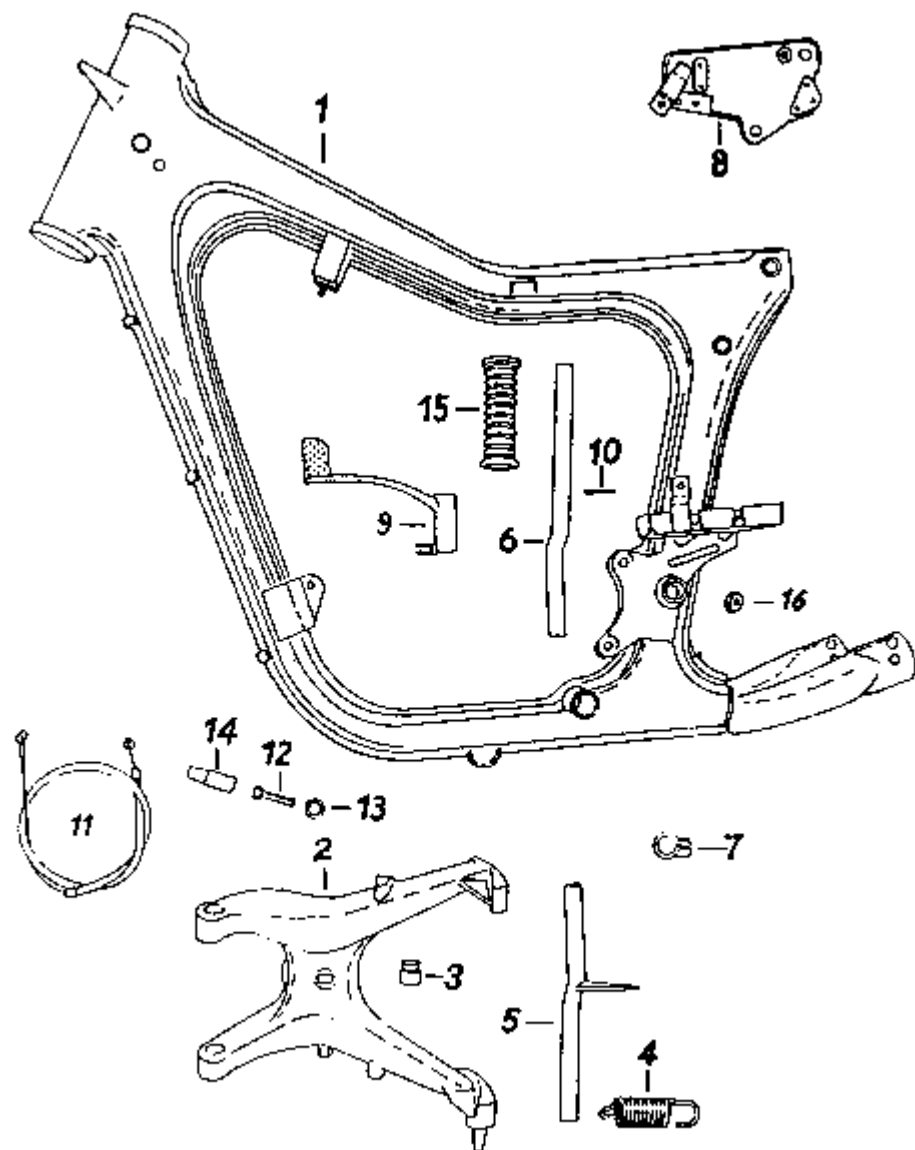
[Table 23](#) Gears, Shafts

[Table 24](#) Monoblock-Starting Device Carburettor

Chassis - Table 1

Frame, Centre Stand

[nächster Punkt](#) ; [Index](#)



Ref.No.	Part.No.	Description	Quantity	Remarks	x
---------	----------	-------------	----------	---------	---

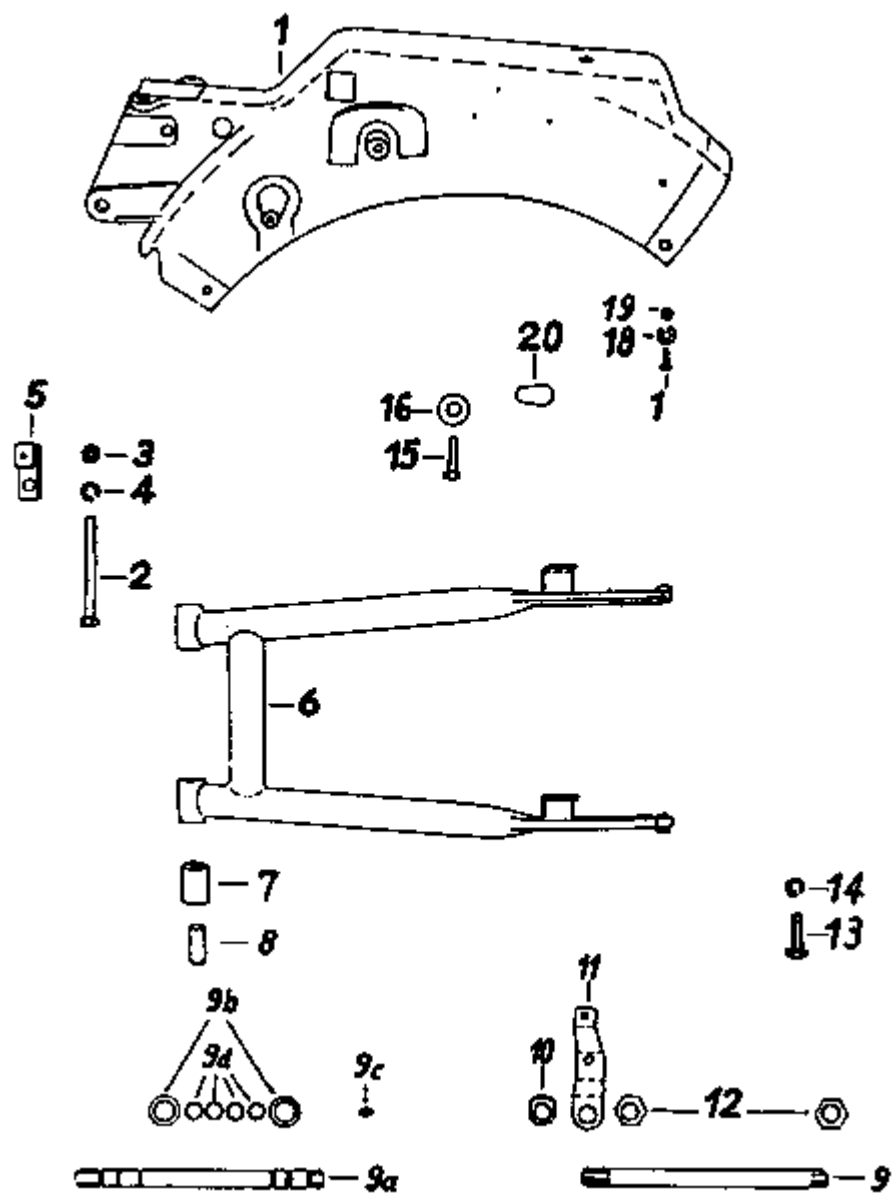
1	13-21.206	Frame c/w model plate	1		4
2	13-21.178	Centre stand	1		5
3	13-21.029	Rebound stop for centre stand (rubber)	1		
4	13-21.177	Return spring for centre stand	1		5
5	13-21.175	Footrest tube, left-hand side	1		10
6	13-21.150	Footrest tube, right-hand side	1		10
7	13-21.005	Clip	2		
	94-05.884	Hexagon screw M 8x35 TGL 0-933-8.8	2		
	94-30.723	Hexagon nut M 8 TGL 0-934-6	2		
	94-37.988	Spring washer B 8 TGL 7403	2		
8	13-21.159	Support for regulator cut-out and ignition coil	1		
9	13-29.018	Brake pedal complete	1		3
10	00-70.007	Dowel pin 5x32 TGL 0-1473	1		
11	13-29.022	Rear brake cable	1		10
12	01-29.317	Cable adjuster	1		
13	94-32.331	Thumb nut M 8x1 TGL 39-285/6	1		
14	13-29.006	Dust cap for rear brake cable	1	rubber	
15	22-21.272	Pedal rubber A ETW-N 60503	2		20
	94-06.161	Hexagon screw for front engine fastening CM 8x45 TGL 0-931-8.8	1		

	94-06.514	Hexagon screw for rear engine fastening CM 8x65 TGL 0-931-8.8	2		
	94-38.386	Spring plate 8 TGL 0-137	2		
	94-30.723	Hexagon nut M 8 TGL 0-934-6	3		
	94-37.988	Spring washer B 8 TGL 7403	3		
16	13-30.287	Distance washer for rear engine fastening	4		

Chassis - Table 2

Saddle Carrier, Swinging Fork

[nächster Punkt](#) ; [Index](#)



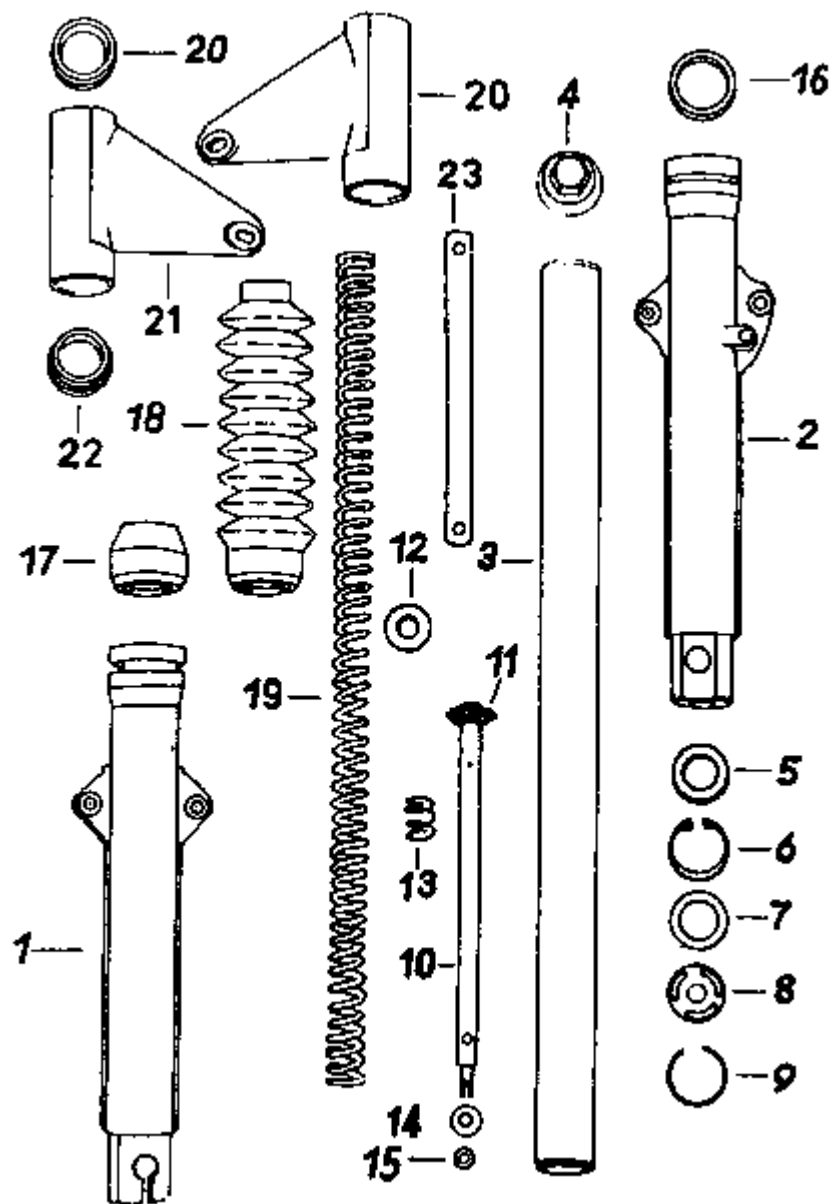
Ref.No.	Part.No.	Description	Quantity	Remarks	x
1	13-21.189/02	Saddle carrier c/w clips for leads	1		2
2	94-08.926	Hexagon screw CM 10x100 TGL 0-931-8.8	2		
3	94-30.885	Hexagon nut M 10 TGL 0-934-6	2		
4	94-38.425	Spring plate 10 TGL 0-137	2		
5	13-21.112	Panel fastening clamp, right-hand side	1		
6	13-21.222	Swinging fork	1		5
7	13-21.225	Rubber bush for swinging fork	2		
8	13-21.214	Inner sleeve for swinging fork	2		
9	13-21.215	Bolt for swinging fork	1		
10	00-70.800	Adjusting ring for swinging fork MZS 689	1		
11	13-21.226	Holder for right panel	1		
12	94-31.724	Hexagon nut M 18x1.5 TGL 0-936-6	2		
13	94-07.531	Hexagon screw M 10x35 for lower suspension unit fastening TGL 0-933-8.8	2		
14	94-38.023	Spring washer B 10 TGL 7403	2		
	94-36.263	Washer 10.5 TGL 0-9021-St	2		
15	94-05.884	Hexagon screw for upper suspension unit fastening M 8x35 TGL 0-933-8.8	2		
16	00-18.131	Washer	2		
17	94-03.962	Hexagon screw M 6x16 TGL 0-933-8.8	2		

18	94-37.867	Spring washer B 6 TGL 7403	2		
19	94-30.522	Hexagon nut M6 TGL 0-934-6	2		
	94-36.062	Washer 6.4 TGL 0-9021-St	2		
20	13-27.059	Cover for saddle carrier (rubber)	1		
		Spare parts for former swinging fork (sliding bearing) TS 125 till frame no. 7708060 TS 150 till frame no. 7850421			
9a	13-21.118	Bolt for swinging fork	1		
9b	13-21.132	Protektive cap for rear swinging fork	2		
9d	13-21.148	Sealing ring	4		
9c	94-74.843	Grease nipple A 6 TGL 0-71412	1		
11a	13-21.164	Holder for right panel	1		

Chassis - Table 3

Front Suspension - Telescopic front fork equipped with stanchions made from aluminium

[nächster Punkt](#) ; [Index](#)



Ref.No.	Part.No.	Description	Quantity	Remarks	x
	13-22.174	Telescopic front fork complete (equipped with protective cap)	1		
	13-22.178	Telescopic front fork complete (equipped with telescopic gaiter)	1		
1	22-22.301	Left stanchion	1		6
2	22-22.303	Right stanchion	1		6
3	22-22.264	Guide tube	2		2
4	22-22.294	Cover nut	2		4
5	00-18.209	Stop washer	2		4
6	94-40.026	Locking ring 30 TGL 0-472	2		4
7	00-18.193	Valve washer	2		4
	22-22.279	Spring for valve washer	2		
8	22-22.278	Damping washer	2		4
9	94-42.116	Circlip 32x1,6 TGL 31666	2		4
10	22-22.266	Supporting tube complete	2		4
11	22-22.274	Sealing ring	2		6
12	22-22.277	Supporting plate for final stop	2		4
13	22-22.280	Spring for finalstop	2		4
14	00-18.210	Sealing washer	2		
	96-72.354	O-ring 6x2 TGL 6365 WS 2.057	2	used till December 1977	12

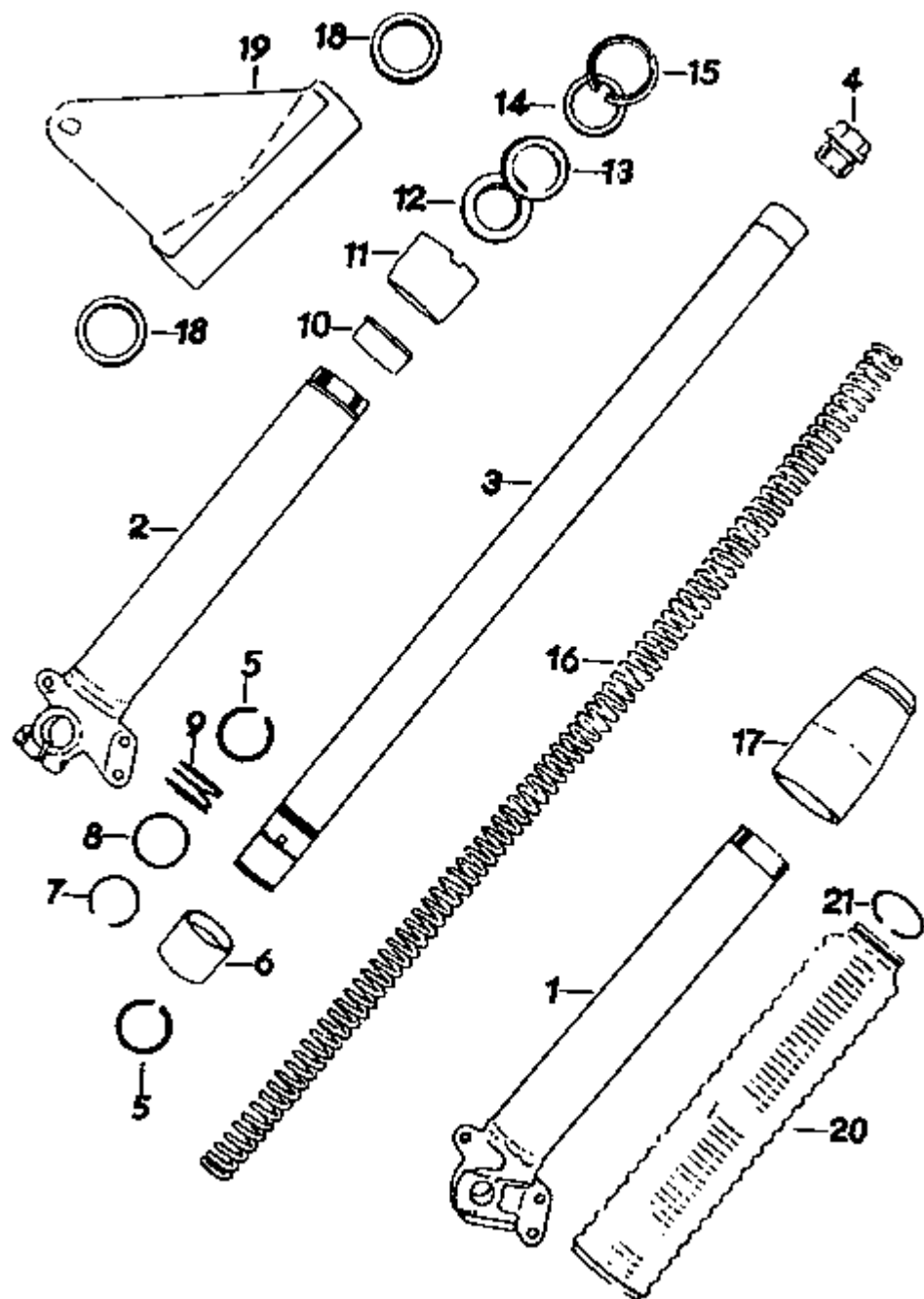
	94-36.013	Sealing washer 6.4 TGL0-1255-St	2	used till December 1977	
15	94-38.345	Spring plate 6 TGL 0-137	2		
	94-30.522	Hexagon nut M 4 TGL 0-934-6	2		
	94-06.321	Hexagon screw M 8x50 TGL 0-931-8.8	1		
	94-38.386	Spring plate 8 TGL 0-137	1		
	94-30.723	Hexagon nut M 8 TGL 0-934-6	1		
16	96-60.375	Oil seal D 35x47x7 TGL 16-454-St	2		12
17	22-22.290	Protective cap	2		10
18	22-22.289	Telescopic giater	2		10
	22-22.298	Clamping clip	2		
	94-15.041	Cylinder head screw BM 4x12 TGL 0-84-5.8	2		
	94-30.282	Hexagon nut M 4 TGL 0-934-6	2		
19	13-22.169	Main spring	2		4
20	13-22.172	Left headlamp holder	1		2
21	13-22.173	Right headlamp holder	1		2
22	22-34.240	Rubber ring for headlamp holder	4		10
	94-06.965	Hexagon screw M 10x16 TGL 0-933-8.8 for headlamp fastening	2	without trafficator device	
	94-38.425	Spring washer 10 TGL 0-137	2		
23	22-24.292/02	Brake torque stay	1		

	94-06.362	Hexagon screw M 8x55 TGI 0-933-8.8	1		
	94-30.354	Hexagon nut M 8 TGL 0-985-6	2		
	00-70.801	Washer 8.4 TGL 0-125-St	3		

Chassis - Table 3a

Front Suspension - Telescopic front fork equipped with stanchions made from aluminium

[nächster Punkt](#) ; [Index](#)



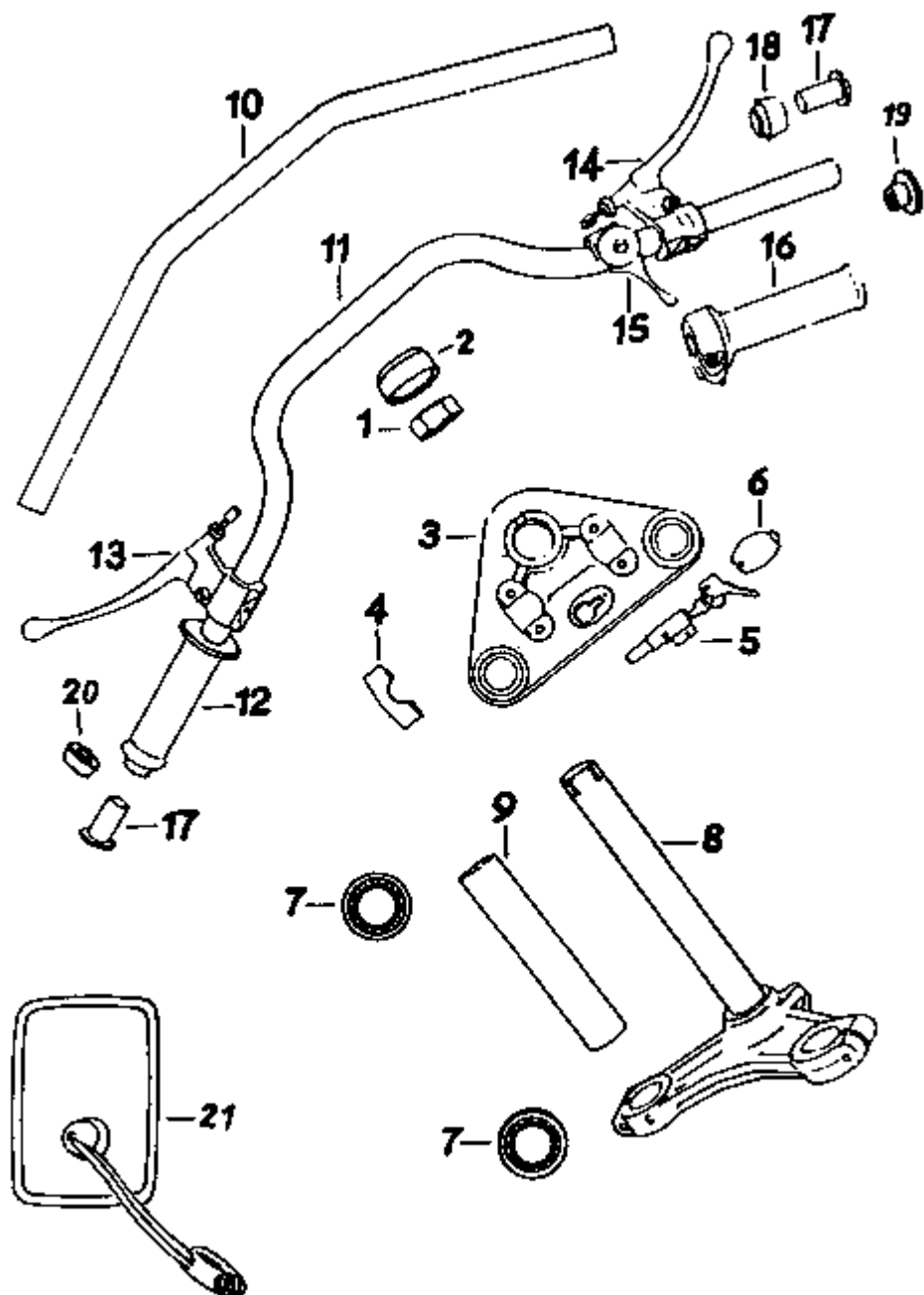
Ref.No.	Part.No.	Description	Quantity	Remarks	x
	13-22.151	Telescopic front fork complete (equipped with protective cap)	1		
	13-22.156	Telescopic front fork complete (equipped with telescopic gaiter)	1		
1	22-22.108	Left stanchion	1		6
2	22-22.107	Right stanchion	1		6
	94-03.722	Hexagon screw M 8x30 TGL 0-933-8.8	1		
	94-37.988	Spring washer B 8 TGL 7403	1		
3	22-22.114	Guide tube	2		12
4	19-22.073	Cover nut	2		
5	94-42.382	Circlip 32 TGL 16363	4		
6	19-22.054	Lower guide sleeve	2		12
7	94-42.116	Circlip 32x1.6 TGL 31666	2		
8	19-22.055	Sealing ring	2		12
9	19-22.056	Spring for sealing ring	2		
10	22-22.115	Upper guide sleeve	2		12
11	22-22.117	Threaded ring	2		6
12	96-60.053	Oil seal D 32x45x7 TGL 16454	2		12
13	19-22.069	Supporting ring for oil seal	2		

14	19-22.060	Felt washer	2		12
15	22-22.118	Retaining ring for felt washer	2		
16	13-22.160	Main spring	2		4
17	22-22.122	Protective cap	2		10
18	22-34.013	Rubber ring for headlamp holder 42 mm	4		
18a	22-34.232	Rubber ring for headlamp holder 40 mm	4		
19	13-22.143	Left headlamp holder	1		3
	13-22.144	Right headlamp holder	1		3
20	22-22.121	Telescopic gaiter	2		10
21	94-42.077	Circlip 38x1.6 TGL 31666	2		

Chassis - Table 4

Handlebar, Control Cables

[nächster Punkt](#) ; [Index](#)



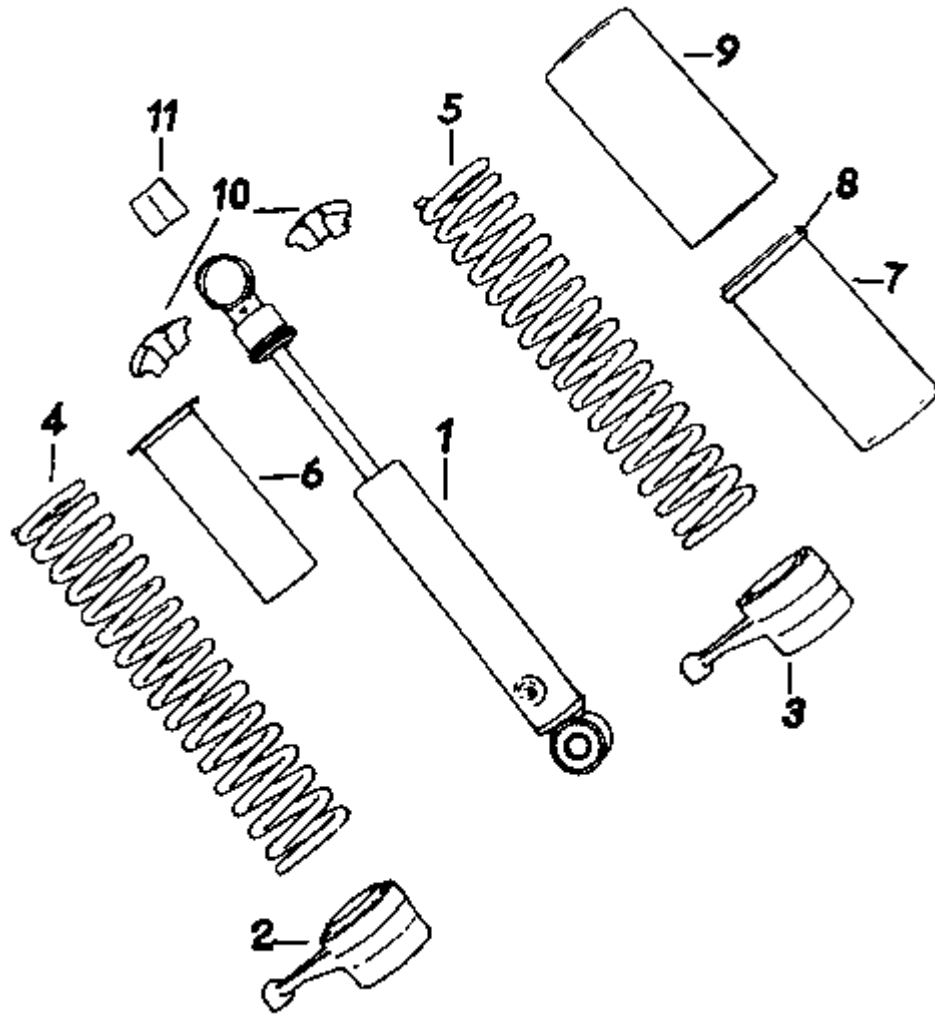
Ref.No.	Part.No.	Description	Quantity	Remarks	x
1	22-22.178	Nut for steering tube	1		
2	13-22.133	Cover cap	1		
3	22-22.255	Top lug	1		3
	22-22.098	Top lug, not varnished	1	for guide tube 32 diam.	
4	22-22.099	Packing piece	2		
	94-30.274	Hexagon screw M 8x40 TGL 0-933-8.8	4		
	00-70.801	Spring plate 8.4 TGL 0-125-St	4		
5	96-21.071	Safety lock SP 53/70 6091-00.00.0	1		5
	94-61.440	Spring A 0.7x12x5.5 f TGL 18395	1		
6	22-22.139	Cover plate	1		
	94-58.092	Button head bolt 2.5x10 TGL 0-1476-4.6	1		
	22-37.006	Elongation for safety lock key	1		
7	93-92.798	Ball bearing for steering 6006 TGL 2981	2		6
8	13-22.170/02	Middle lug and stem	1		3
	13-22.147/02	Middle lug and stem	1	for guide tube 32 diam.	
9	13-22.148	Distance tube	1		
	94-30.274	Hexagon screw M 8x40 TGL 0-933-8.8 for middle lug and stem	2		

	94-37.988	Spring washer B 8 TGL 7403	2		
10	22-23.008	Handlebar (flat shaped)	1		10
		Control cables for flat shaped handlebar			
	93-71.920	Front brake cable A 1105x937x150.5	1		10
	93-71.816	Throttle cable D 946x841x95	1		5
	93-71.752	Choke cable E/D 884x810x60	1		
	13-29.003	Clutch cable A 1167x1022x127	1		10
11	22-23.023	Handlebar (swept-up design)	1		10
		Control cables for swept-up handlebar			
	93-72.255	Front brake cable A 1235x1067x150.5	1		10
	93-71.816	Throttle cable D 946x841x95	1		5
	93-71.857	Choke cable E/D 974x900x60	1		
	13-29.027	Clutch cable A 1267x1122x127.5	1		10
	16-29.017	Dust cap for cable	2		
	13-29.007	Dust cap for clutch cable	1		10
	96-36.496	Cable strap 100 ETW-N 60507	2	delivered in metres	
	96-36.551	Cable strap fastener ETW-N 60507	2		
12	00-08.092	Handlebar grip 302/1	1		3
13	00-08.121	Clutch lever compl.	1		3

14	00-08.120	Front brake lever compl.	1		3
	00-08.027	Adjusting screw for cable	2		10
	00-08.028	Thumb nut	2		5
15	00-08.046	Choke lever complete	1		3
16	00-08.078	Twistgrip complete	1		3
17	13-30.100	Tightening plug for handlebar	2		2
	94-20.006	Oval head screw BM 5x10 TGL 5687-4.8	1		10
	00-08.083	Twist grip tube compl.	1		
	00-08.079	Body for twist grip compl.	1		3
	00-08.074	Rubber grip for twist grip	1		10
18	00-08.088	Distance piece	1		2
19	13-30.365	Guide ring for twist grip (right mirror fitted)	1		10
20	13-30.074	Distance piece for handlebar, left-hand side	1	necessary if right mirror is fitted only	
21	96-21.963	Rear view mirror, left-hand side 31049.17141	1		10
	96-21.955	Rear view mirror, right-hand side 31049.18140	1		

Chassis - Table 5

Rear Suspension

[nächster Punkt](#) ; [Index](#)

Ref.No.	Part.No.	Description	Quantity	Remarks	x
	16-23.023	Suspension units (in pairs) without dirt shields	1 pair		

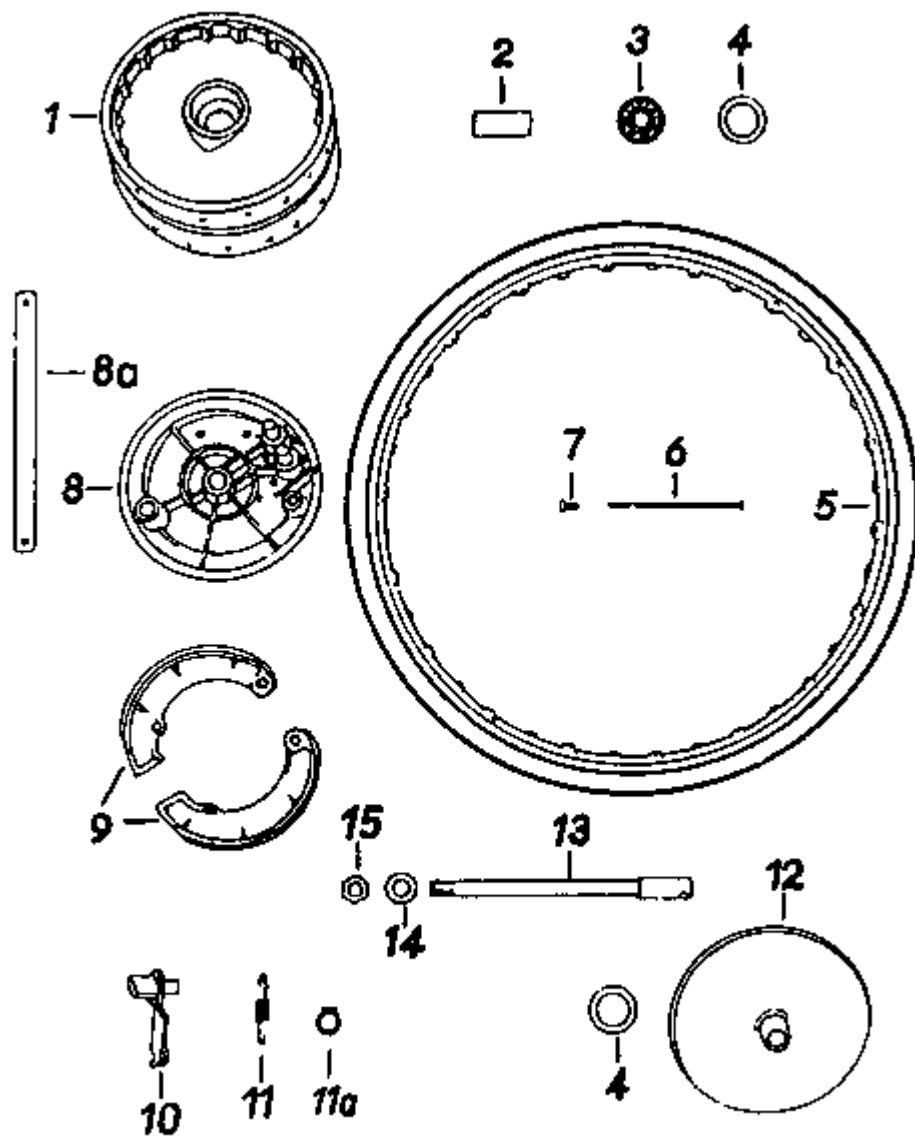
	16-23.021	Suspension units (in pairs) with dirt shields	1 pair		
1	93-70.454	Hydraulic damper A 22-100-88/8 MV	2		10
2	16-23.027	Adjusting sleeve, left-hand side - without dirt shields	1		
	16-23.026	Adjusting sleeve, right-hand side - without dirt shields	1		
3	16-23.014	Adjusting sleeve, left-hand side - with dirt shields	1		
	16-23.013	Adjusting sleeve, right-hand side - with dirt shields	1		
4	16-23.028	Spring for suspension unit, chromium plated for suspension unit without dirt shields	2		4
5	05-23.081	Spring for suspension unit (for suspension unit with dirt shields)	2		2
6	13-23.046	Protective tube	2		12
7	16-23.010	Inner dirt shield, chromium plated	2		10
8	05-23.112	Guide ring, plastic	2		10
9	05-23.025	Outer dirt shield, chromium plated	2		5
10	05-23.091	Spring retainer	4		4
11	05-23.161	Rubber ring for suspension unit on top	2		12
	94-05.281	Hexagon screw M 8x14 TGL 0-933-8.8	2		
	94-05.618	Hexagon screw M 8x25 TGL 0-933-8.8	2	for fastening of luggage carrier	
	00-18.131	Washer	2		
	94-07.531	Hexagon screw M 10x35 TGL 0-933-8.8	2		
	94-38.023	Spring washer B 10 TGL 7403	2		

	13.22-138	Center Ring	2	former design	
--	-----------	-------------	---	---------------	--

Chassis - Table 6

Front Wheel, Hub and Brake Drum, Brake

[nächster Punkt](#) ; [Index](#)



Ref.No.	Part.No.	Description	Quantity	Remarks	x
	22-24.256	Front wheel	1		
1	22-24.259	Hub and brake drum	1		2
2	05-24.031	Distance tube	1		
3	93-94.228	Ball bearing 6302 TGL 2981	2		10
4	01-24.314	Packing ring	2		10
5	13-24.037	Wheel rim 1.60x18 TGL 12731-Lm	1		6
6	93-71.367	Spoke A 148 TGL 39-491	36		200
7	93-71.287	Spoke nipple M 4 TGL 39-491	36		200
		Tyre 2.75x18 TGL 6498	1 ¹		
		Tube 2.75x18 TGL 20175	1 ¹		
		Tyre flap 25x18 TGL 104-6	1 ¹		
8	22-24.274	Brake anchor plate complete	1		5
	22-24.275	Brake anchor plate complete, high-polished	1		
	22-24.276	Brake anchor plate complete, polished	1		
	22-24.277	Brake anchor plate complete (brake light design)	1		
8a	22-24.292/02	Front brake stay	1		
	94-06.241	Hexagon screw M 8x45 TGL 0-933-8.8	1	at brake anchor plate	
	94-30.723	Hexagon nut M 8 TGL 0-934-6	1		

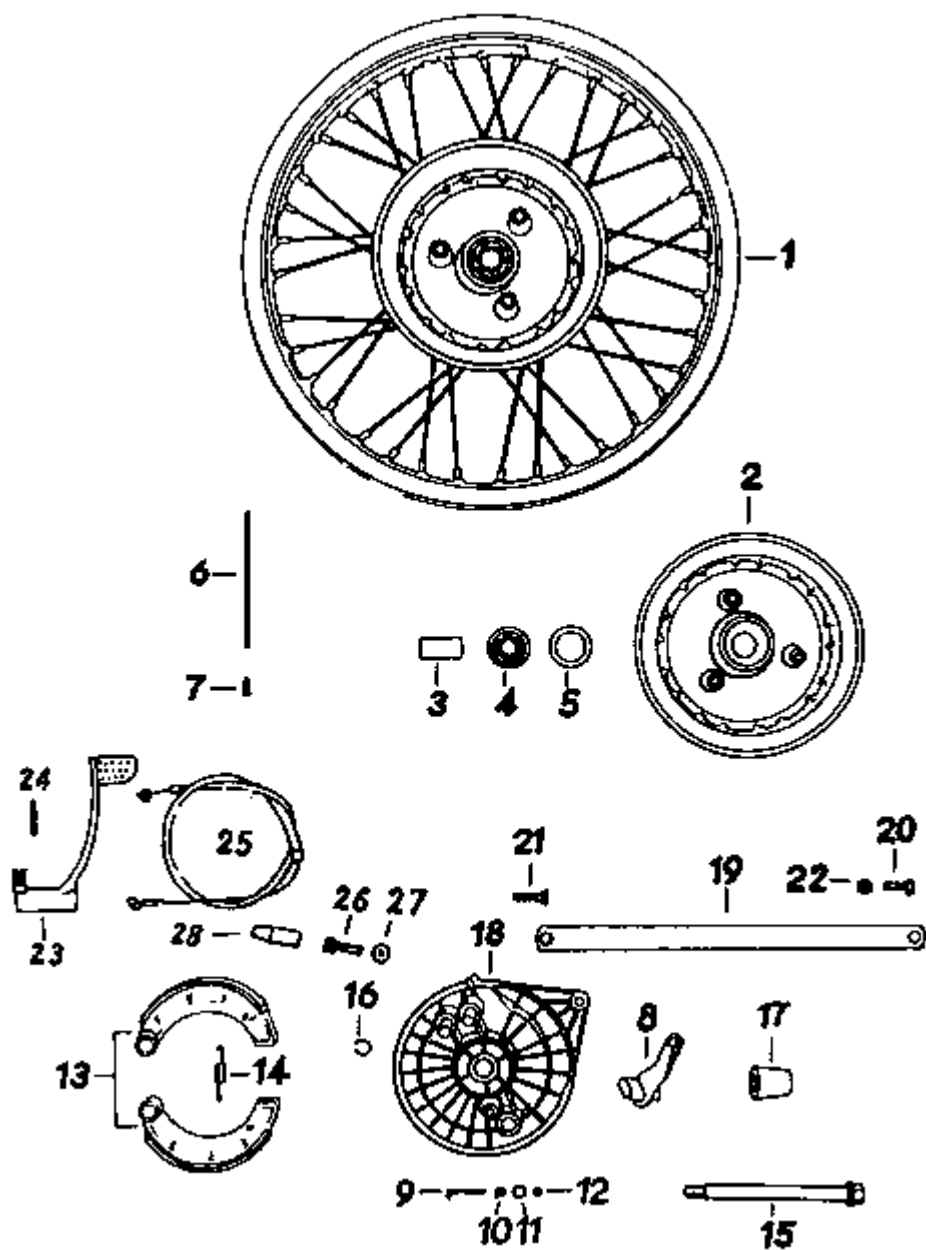
	00-70.801	Washer 8.4 TGL 0-125-St	4		
	94-06.362	Hexagon screw M 8x55 TGL 0-933-8.8	1	at stanchion self-locking	
	94-30.354	Hexagon nut M 8 TGL 27689-8	2		
8	05-24.254	Brake anchor plate complete	1 ²		5
	05-24.264	Brake anchor plate complete, high polished	1 ²		
	05-24.269	Brake anchor plate complete, polished	1 ²		
	22-24.003	Brake anchor plate complete (brake light design)	1 ²		
9	05-24.261	Brake shoe c/w lining	2		12
10	13-24.026	Brake cam lever	1		5
	13-25.070	Brake cam lever c/w contact plate	1		
	01-25.252	Contact plate	1		
	94-58.164	Button head bolt 2.5x6 TGL 0-1477-4.6	2		
	01-25.377	Contact screw	1		
	13-25.031	Insulator sleeve	1		
	05-25.043	Insulator disc	1		
	13-30.204	Contact plate for stop lamp switch	1		
	94-30.362	Hexagon nut M 5 TGL 0-934-6	2		
	94-37.826	Spring washer B 5 TGL 7403	1		
	94-38.304	Spring plate 5 TGL 0-137	1		

11	13-24.019	Shoe return spring	1		10
11a	94-38.948	Locking ring 12 TGL 0-471	2		10
12	22-24.279	Cover plate	1		5
	22-24.280	Cover plate, high polished	1		5
	05-24.006	Cover plate	1 ²		5
	05-24.263	Cover plate, high polished	1 ²		
13	22-24.285	Wheel spindle	1		
	22-24.025	Wheel spindle	1 ²		
14	00-18.156	Washer	1		
15	94-31.363	Hexagon nut M 14x1.5 TGL 0-934-6	1		
	22-24.010	Balancing weight	if. requ.		
		¹ not supplied by MZ			
		² for telescopic front forks equipped with guide sleeves			

Chassis - Table 7

Rear Wheel, Hub and Brake Drum, Brake

[nächster Punkt](#) ; [Index](#)



Ref.No.	Part.No.	Description	Quantity	Remarks	x
1	13-25.002	Rear Wheel	1		
2	13-25.005	Hub and brake drum	1		1
3	01-24.017	Distance tube	1		
4	93-94.228	Ball bearing 6302 TGL 2981	2		
5	01-24.314	Packing ring	1		
6	93-71.367	Spoke A 148 TGL 39-491	36		200
7	93-71.287	Spoke nipple M 4 TGL 39-491	36		
	13-25.009	Wheel rim 1.85 Bx18 TGL 12731-Lm	1		2
		Tyre 3.00x18 TGL 6498	1 ¹		
		Tube 3.00x18 TGL 20175	1 ¹		
		Tyre flap 25x18 TGL 104-6	1 ¹ <		
8	13-25.070	Brake cam lever c/w contact plate	1		2
	01-25.252	Contact plate	1		
	94-58.164	Button head rivet 2.5x6 TGL 0-1477-4.6	2		
9	01-25.377	Contact screw	1		2
10	13-25.031	Isulator sleeve for stop lamp switch	1		2
11	05-25.043	Isulator disc for stop lamp switch	1		2

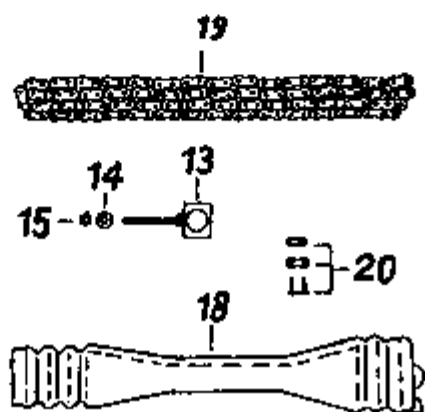
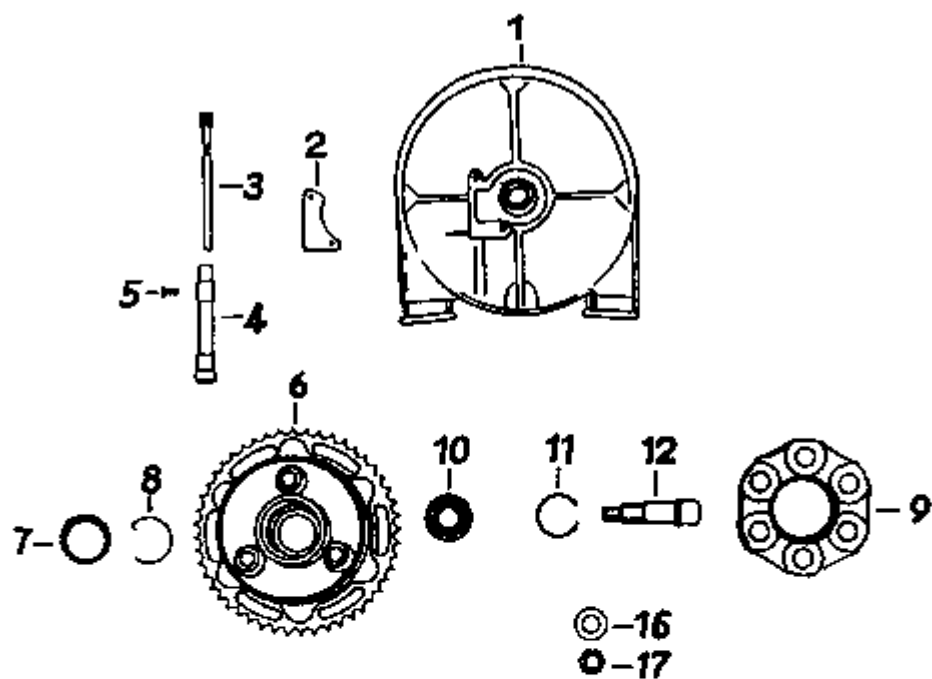
12	94-30.362	Hexagon nut M 5 TGL 0-934-6	2		
	13-30.204	Contact plate for stop lamp switch	1		
	13-30.205	Protective cap	1		
	B 1	* Slip connector A 6.3-1 TGL 200-3854	1		
13	01-24.315	Brake shoe c/w lining	2		10
14	13-24.019	Shoe return spring	1		
15	01-25.229	Wheel spindle	1		1
	00-18.156	Washer for wheel spindle	1		
16	94-38.948	Lock washer 12 TGL 0-471	2		
17	22-25.006	Distance sleeve	1		
18	13-25.067	Brake anchor plate	1		
	13-25.075	Brake anchor plate, high polished	1		
	13-25.086	Brake anchor plate, polished	1		
19	13-25.084	Brake torque stay	1		
20	94-05.618	Hexagon screw M 8x25 TGL 0-933-8.8	1		
21	94-05.722	Hexagon screw M 8x30 TGL 0-933-8.8	1		
22	94-30.723	Hexagon nut M 8 TGL 0-934-6	3		
23	13-29.018	Brake pedal	1		3
24	00-70.007	Dowel pin 5x32 TGL 0-1473	1		

25	13-29.022	Rear brake cable	1		10
26	01-29.317	Cable adjusting screw	1		
27	94-32.331	Thumb nut M 8x1 TGL 39-285/6	1		
28	13-29.006	Protective cap	1	rubber	
		¹ not supplied by MZ			

Chassis - Table 8

Rear Wheel Drive, Speedometer Drive

[nächster Punkt](#) ; [Index](#)



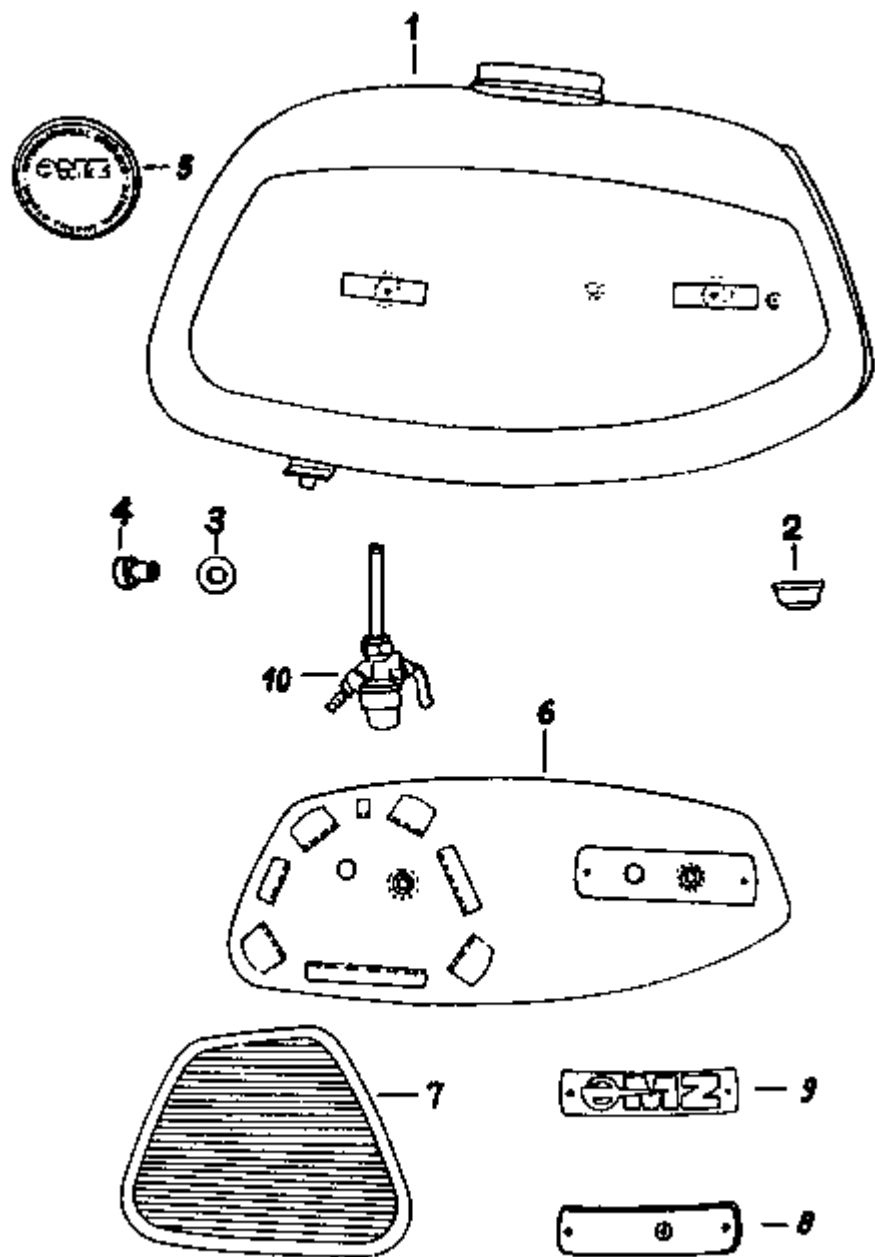
Ref.No.	Part.No.	Description	Quantity	Remarks	x
1	13-25.041	Chain cover	1		5
	13-25.072	Distance spacer	1		
2	13-25.022	Sealing plate	1		
3	13-25.038	Speedometer gear complete	1		2
4	13-25.043	Speedometer drive bush	1		2
5	94-19.053	Countersunk screw BM 6x8 TGL 5683-4.8	1		
6	13-25.071	Wheel driver with sprocket	1		1
7	01-25.232	Speedometer pinion	1		
8	01-25.315	Circlip	1		
9	05-25.030	Damping rubber	1		4
10	94-92.660	Ball bearing 6004 TGL 2981	1		5
11	00-03.019	Circlip	1		
12	13-25.025	Flange bolt	1		
13	05-25.122	Chain adjuster	2		10
14	94-36.013	Washer 6.4 TGL 0-125-St	2		
15	94-30.522	Hexagon nut M 6 TGL 0-934-6	4		
16	94-38.505	Spring plate 14 TGL 0-137	1		
17	94-31.402	Hexagon nut M 14x1.5 TGL 0-936-6	1		

18	13-28.014	Chain guard	2		10
19	93-70.688	Chain with connecting link 1x12.7x6.4x120 TGL 11796	1		5
20	93-70.768	Connecting link 1 D 12.7x6.4 TGL 11796	1		

Chassis - Table 9

Petrol Tank, Petrol Tap

[nächster Punkt](#) ; [Index](#)

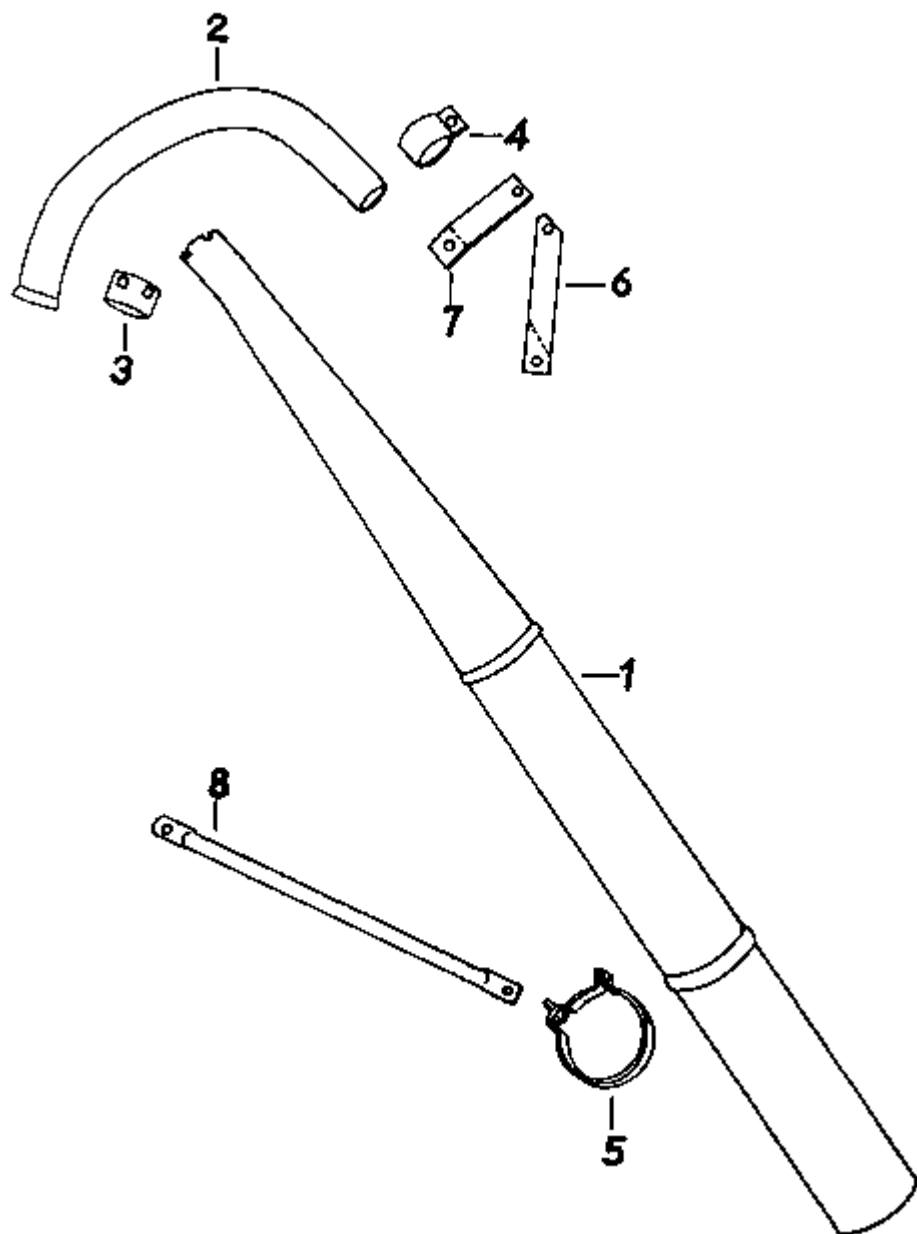


Ref.No.	Part.No.	Description	Quantity	Remarks	x
1	13-27.175	Petrol tank	1		3
2	13-27.181	Front support for petrol tank	2		
3	13-27.183	Rear support for petrol tank (rubber)	2		
4	22-27.110	Rear support for petrol tank (rubber)	2		
	13-27.182	Distance sleeve	2		
5	00-13.073	Filler cap	1		
	22-27.108	Filler cap with measuring cup	1		
	13-27.094	Lockable filler cap with measuring cup	1		
	00-13.093	Joint washer	1		
6	22-27.058	Left decorative plate, chromium plated	1		
	22-27.057	Right decorative plate, chromium plated	1		
	94-15.492	Cylinder head screw BM 5x6 TGL 0-84-5.8	4		
7	22-27.056	Left knee grip	1		
	22-27.055	Right knee grip	1		
	22-27.097	Left knee grip (for standard design)	1		
	22-27.098	Right knee grip (for standard design)	1		
8	22-27.099	Spacing for petrol tank badges	2		

9	22-27.040	Petrol tank badge	2		
	95-21.244	Washer for badge FERS 323 3.2x9x1, rubber	4		
	94-19.873	Fillister head screw BM 3x6 TGL 0-85-5.8	4		
	94-04.328	Hexagon screw for petrol tank fastening M 6x30 TGL 0-933-8.8	2		
	94-36.062	Washer 6.4 TGL 0-9021-St	2		
	94-37.867	Spring washer B 6 TGL 7403	2		
10	80-50.400	Petrol tap (without nut M 16x1)	1		5
	80-50.413	Petrol pipe A 5x180 TGL 10347	1	delivered in metres	
	80-50.402	Petrol nipple	1		5
	80-50.403	Screen holder c/w screen	1		10
	80-50.404	Petrol tap lever	1		
	80-50.405	Petrol tap case	1		5
	80-50.407	Top screen for petrol tap 12x70x10	1		10
	80-50.408	Connecting nut M 16x1 (right- and left-handed)	1		5
	80-50.414	Joint washer for petrol tap case	1		10
	80-50.415	Fibre washer 15x10.5x1	1		10
	80-50.431	Spring plate for petrol tap lever	1		
	80-50.432	Membrane for petrol tap	1		10

Chassis - Table 10 Silencer

[nächster Punkt](#) ; [Index](#)



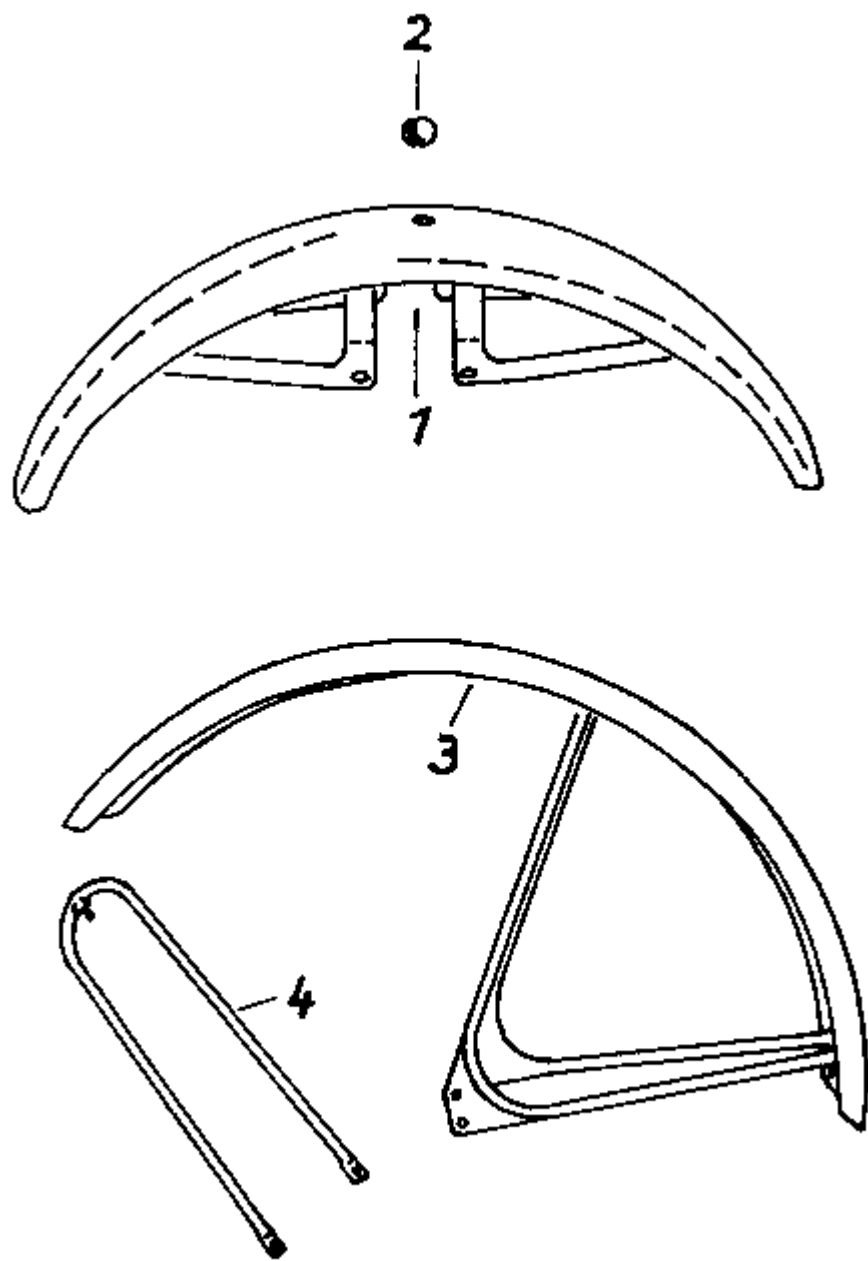
Ref.No.	Part.No.	Description	Quantity	Remarks	x
1	13-27.113	Silencer	1		5
2	13-27.132	Exhaust pipe	1		5
3	13-27.157	Nut for exhaust pipe fastening	1		5
4	12-27.006	Clip for silencer	1		
	94-05.722	Hexagon screw M 8x30 TGL 0-933-8.8	1		
	94-30.723	Hexagon nut M 8 TGL 0-934-6	1		
	94-37.988	Spring washer B 8 TGL 7403	1		
5	01-27.307	Clip for silencer fastening complete	1		
	94-04.096	Hexagon screw M 6x20 TGL 0-933-8.8	1		
	94-30.522	Hexagon nut M 6 TGL 0-934-6	1		
	94-37.867	Spring washer B 6 TGL 7403	1		
	94-36.013	Washer 6.4 TGL 0-125-St	1		
6	13-27.156	Rod for silencer fastening (at engine)	1		
7	13-27.135	Front rod for silencer fastening	1		
	94-05.618	Hexagon screw M 8x25 TGL 0-933-8.8	2		
	94-37.988	Spring washer B 8 TGL 7403	2		
8	13-27.133	Rear rod for silencer fastening	1		
	94-05.618	Hexagon screw M 8x25 TGL 0-933-8.8	1		

	94-30.723	Hexagon nut M 8 TGL 0-934-6	2		
	94-37.988	Spring washer B 8 TGL 7403	2		

Chassis - Table 11

Front Mudguard

[nächster Punkt](#) ; [Index](#)

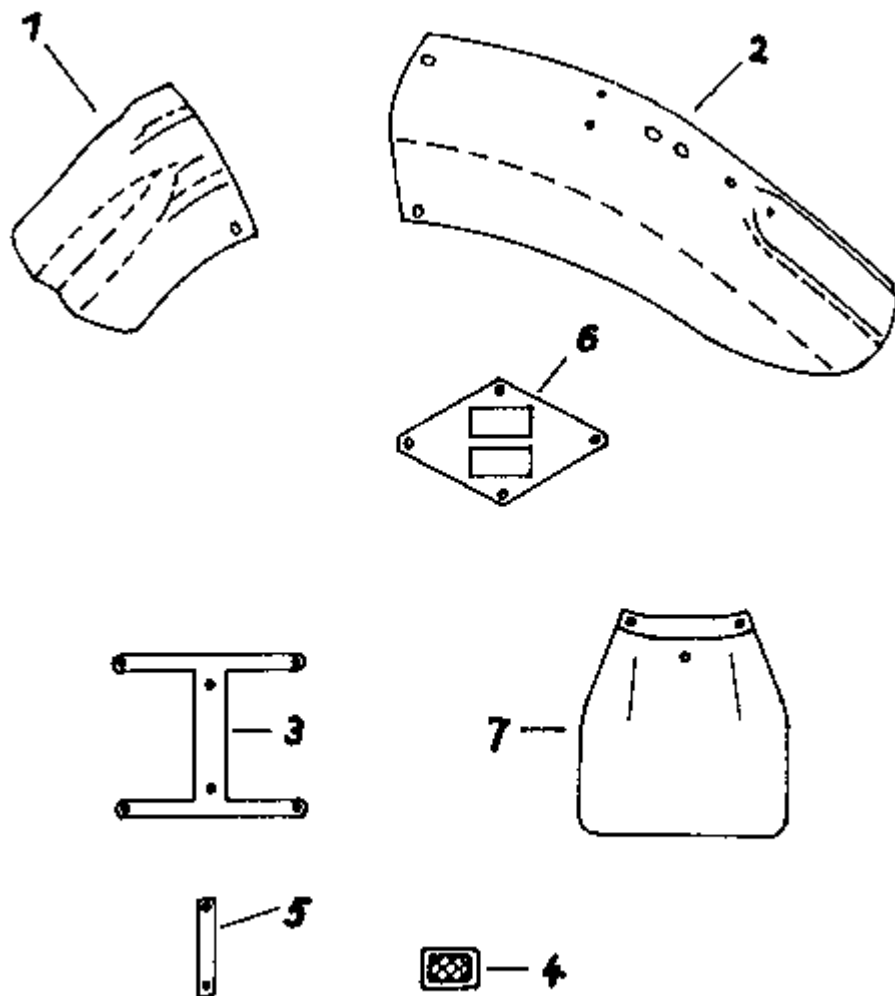


Ref.No.	Part.No.	Description	Quantity	Remarks	x
1	22-29.087/02	Front mudguard complete	1		3
	94-04.416	Hexagon screw M 6x35 TGL 0-933-8.8	4		
	94-30.522	Hexagon nut M 6 TGL 0-934-6	4		
	94-36.013	Washer 6.4 TGL 0-125-St	4		
	94-36.062	Washer 6.4 TGL 0-9021-St	4		
	94-37.867	Spring washer B 6 TGL 7403	4		
2	02-48.071	Rubber plug	1		
3	13-28.134/02	Front mudguard complete	1 ¹		3
4	13-28.130	Stay for front mudguard, chromium plated	1 ¹		3
	94-30.522	Hexagon nut M 6 TGL 0-934-6	1 ¹		
	94-38.345	Spring plate 6 TGL 0-137	1 ¹		
	94-03.962	Hexagon screw M 6x16 TGL 0-933-8.8	6 ¹		
	94-30.522	Hexagon nut M 6 TGL 0-934-6	6 ¹		
	94-37.867	Spring washer B 6 TGL 7403	6 ¹		
		¹ for telescopic front forks equipped with guide sleeves			

Chassis - Table 12

Rear Mudguard

[nächster Punkt](#) ; [Index](#)



Ref.No.	Part.No.	Description	Quantity	Remarks	x
---------	----------	-------------	----------	---------	---

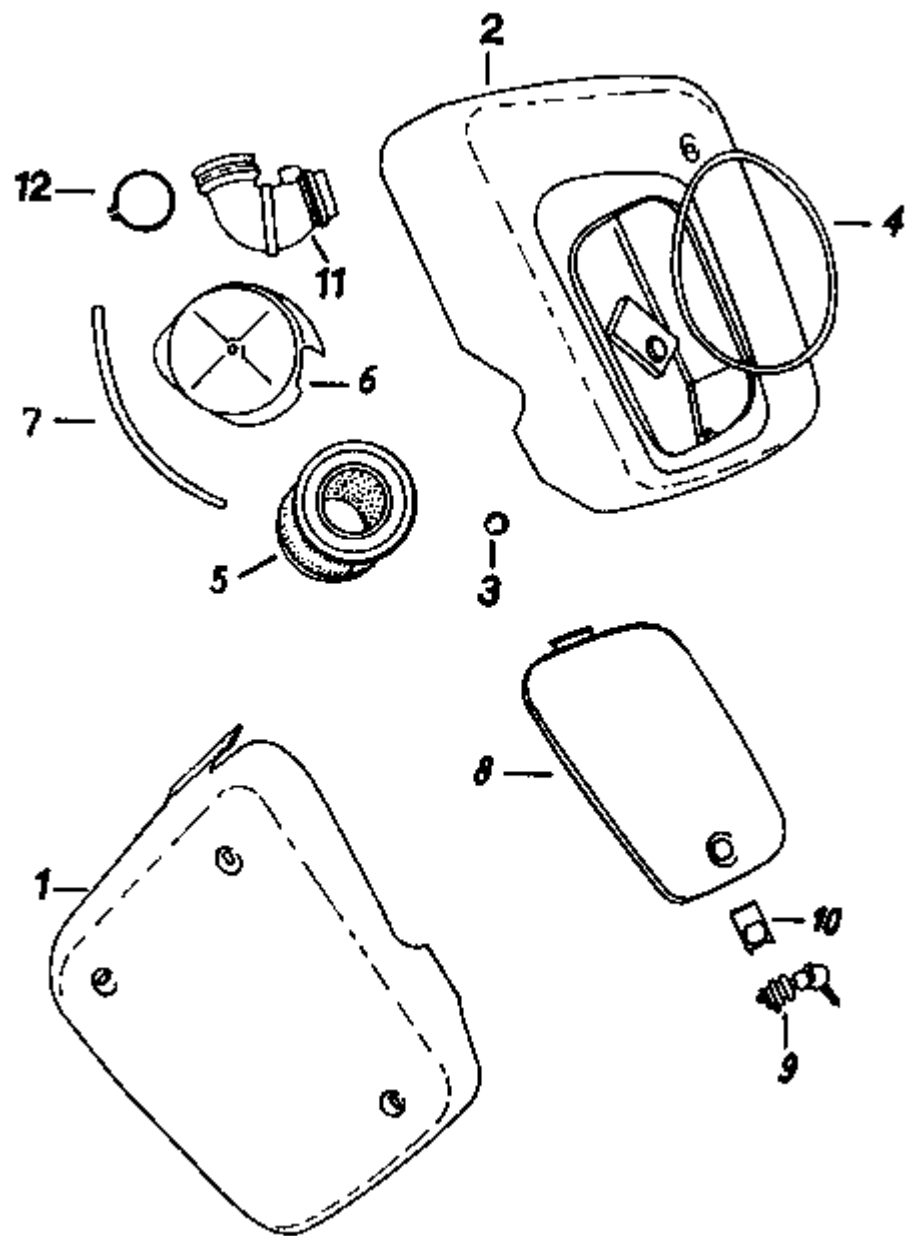
1	13-28.163	Front end of rear mudguard	1		
	94-03.962	Hexagon screw M 6x16 TGL 0-933-8.8	2		
	94-30.522	Hexagon nut M 6 TGL 0-984-6	2		
	94-37.867	Spring washer B 6 TGL 7403	2		
	94-36.062	Washer 6.4 TGL 0-9021-St	2		
2	13-28.159/02	Rear end of rear mudguard	1		
	13-28.158	Rubber support for rear end of rear mudguard (length 280 mm)	1	delivered in metres	
	94-03.962	Hexagon screw M 6x16 TGL 0-933-8.8	2		
	94-30.522	Hexagon nut M 6 TGL 0-934-6	2		
	94-37.867	Spring washer B 6 TGL 7403	2		
	94-36.062	Washer 6.4 TGL 0-9021-St	2		
	94-05.400	Hexagon screw M 8x18 TGL 0-933-8.8	1		
	94-30.723	Hexagon nut M 8 TGL 0-934-6	1		
	94-38.386	Spring plate 8 TGL 0-137	1		
	13-28.125/02	Rear end of rear mudguard	1	GFR	
	13-28.147	Model plate TS 150	1	till fram no. 7857584	
	13-28.146	Model plate TS 125	1	till fram no. 7710571 and GFR	
	94-14.885	Cylinder head screw BM 4x4 TGL 0-84-4.8	1		
	94-37.787	Spring washer B 4 TGL 7403	1		

3	13-30.212	Holder for number plate	1	GFR and Hungary	
4	13-30.243	Rear reflector	1	GFR	
5	13-30.242	Holder for rear reflector	1	GFR	
	96-22.144	Number plate C TGL 15653 P	1		
6	13-30.335	Strengthening plate for number plate	1		
	94-15.603	Cylinder head screw BM 5x12 TGL 0-84-5.8	1-4		
	94-30.362	Hexagon nut M 5 TGL 0-934-6	2-4		
	94-37.826	Spring washer B 5 TGL 7403	1-4		
	94-38.304	Spring plate 5 TGL 0-137	1		
	94-15.644	Cylinder head screw BM 5x16 TGL 0-84-5.8	1		
	94-35.945	Spring plate 5.3 TGL 0-9021-St	1		
7	22-30.109	Dirt shield (rubber - spezial accessory)	1		
	94-03.962	Hexagon screw M 6x16 TGL 0-933-8.8 (for dirt shield fastening)	2		
	94-30.522	Hexagon nut M 6 TGL 0-934-6	2		
	94-37.867	Spring washer B 6 TGL 7403	2		
	94-36.062	Washer 6.4 TGL 0-9021-St	2		

Chassis - Table 13

Panels, Air Silencer, Air Filter

[nächster Punkt](#) ; [Index](#)



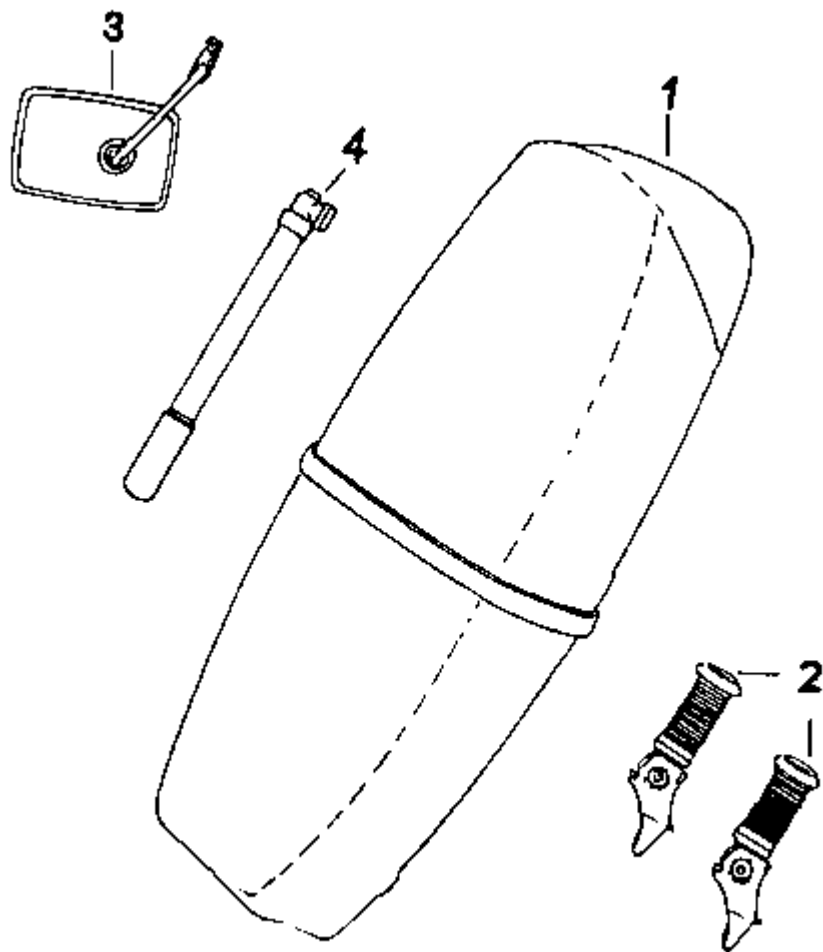
Ref.No.	Part.No.	Description	Quantity	Remarks	x
1	13-28.145	Left panel	1		3
	13-28.057	Rubber grommel for ignition cable	1		
	94-03.761	Hexagon screw M 6x10 TGL 0-933-8.8	3		
	94-38.345	Spring plate 6 TGL 0-137	3		
2	13-28.143	Right panel	1		3
	94-03.761	Hexagon screw M 6x10 TGL 0-933-8.8	3		
	94-38.345	Spring plate 6 TGL 0-137	3		
	94-36.062	Washer 6.4 TGL 0-9021-St	1		
3	02-48.071	Rubber plug	1		
4	13-28.069	Rubber ring for cover	1		
5	93-77.348	Micro filter (try type) 100x102 TGL 39-474	1		15
	00-06.051	Tightening screw for air filter	1		
6	13-28.094	Cover for micro filter	1		
7	13-28.068	Rubber pad for cover (length: 215 mm)	1	delivered in metres	
	94-30.522	Hexagon nut M 6 TGL 0-934-6	2		
	94-36.013	Washer 6.4 TGL 0-125-St	1		
8	13-28.144	Cover for tool box	1		
9	96-21.096	Safety lock for tool box cover	1		3

10	13-28.090	Lock plate for safety lock	1		
11	13-28.072	Angular rubber pipe for carburettor	1		4
12	13-28.061	Clamping ring for angular rubber pipe fastening	1		
	94-15.162	Cylinder head screw AM 4x18 TGL 0-84-5.8	1		
	94-30.282	Hexagon nut M 4 TGL 0-934-6	1		
	13-20.029	Sticker 'TS 125'	2		
	13-20.030	Sticker 'TS 150'	2		

Chassis - Table 14

Dual Seat, Accessorie, Tools

[nächster Punkt](#) ; [Index](#)



Ref.No.	Part.No.	Description	Quantity	Remarks	x
1	13-31.250	Dual seat	1		2
	94-05.378	Hexagon screw M 8x16 TGl 0-933-8.8	4		

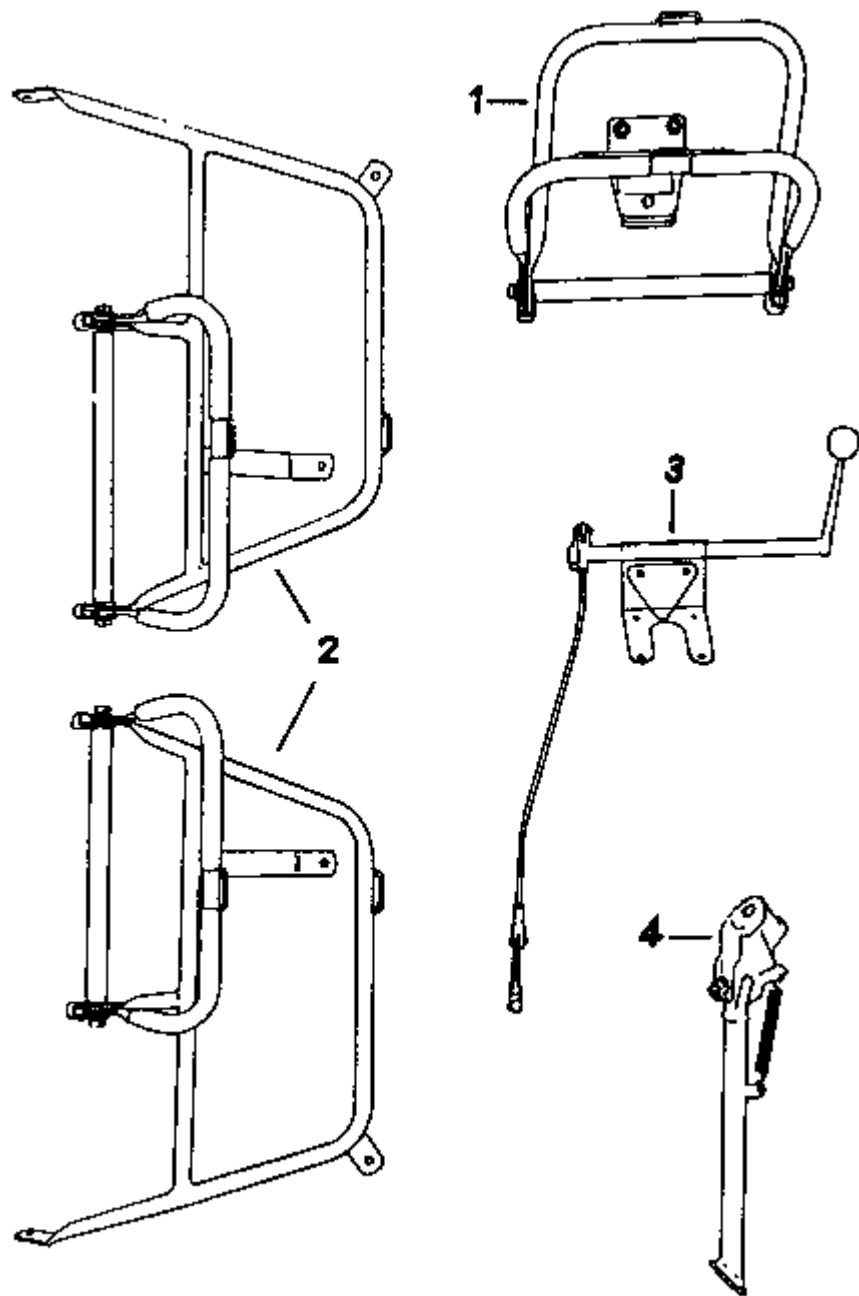
	94-37.988	Spring washer B 8 TGL 7403	4		
	00-70.801	Washer 8.4 TGL 0-125-St	4		
	13-31.254	Cover for dual seat	1		
	13-31.394	Safety strap for dual seat	1		
2	13-31.955	Pillion footrest	2		10
	94-06.965	Hexagon screw M 10x16 TGL 0-933-8.8	2		
	94-38.425	Spring plate 10 TGL 0-137	2		
3	96-21.963	Rear view mirror, left-hand side 31049.17141	1		
	96-21.955	Rear view mirror, right-hand side 31049.18140	1		
4	93-70.928	Tyre inflator B 285 TGL 7640	1		
	13-30.305	Tool set complete	1		
	97-43.505	Tool roll	1		
	95-97.824	Combination pliers 160 TGL 4494	1 ¹		
	96-03.865	Screw driver A 0.4x40 TGL 48-73503-C 45	1 ¹		
	96-03.904	Screw driver G TGL 48-73503-C 45	1 ¹		
	93-71.680	Tyre lever A TGL 39-442	1 ¹		
	00-70.001	Tyre lever B TGL 39-442	1		
	96-00.067	Open spanner 8x10 TGL 48-73109	1 ¹		

	96-00.106	Open spanner 9x11 TGL 48-73109	1 ¹		
	96-00.130	Open spanner 12x13 TGL 48-73109	1 ¹		
	96-00.155	Open spanner 13x17 TGL 48-73109	1 ¹		
	96-00.227	Open spanner 19x22 TGL 48-73109	1 ¹		
	00-04.232	Spark plug spanner	1		
	00-04.094	Box spanner (for cylinder head)	1		
	00-04.049	Bolt for box spanner	1		
	93-70.768	Connecting link 1 D 12.7x6.4 TGL 11796	1		
	95-19.555	Feeler gauge 0.6 TGL 31508	1		
	95-19.571	Feeler gauge 0.3 TGL 31508	1		
	96-42.404	Tyre patch kit	1		
		¹ are not available as single parts			

Chassis - Table 15

Special Accessories

[nächster Punkt](#) ; [Index](#)



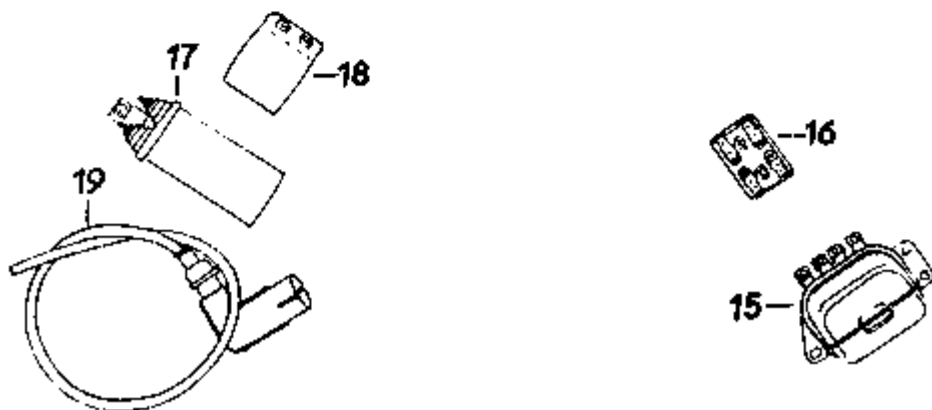
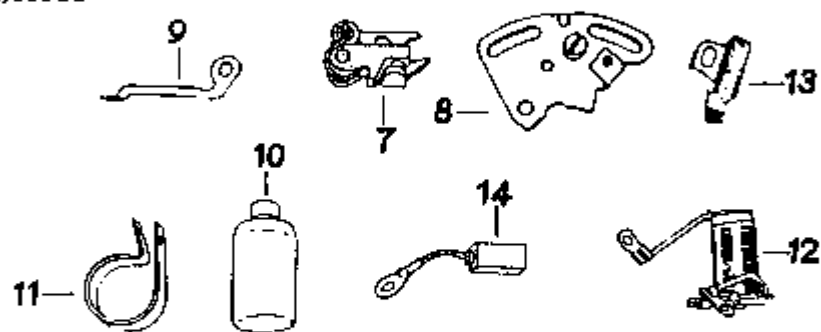
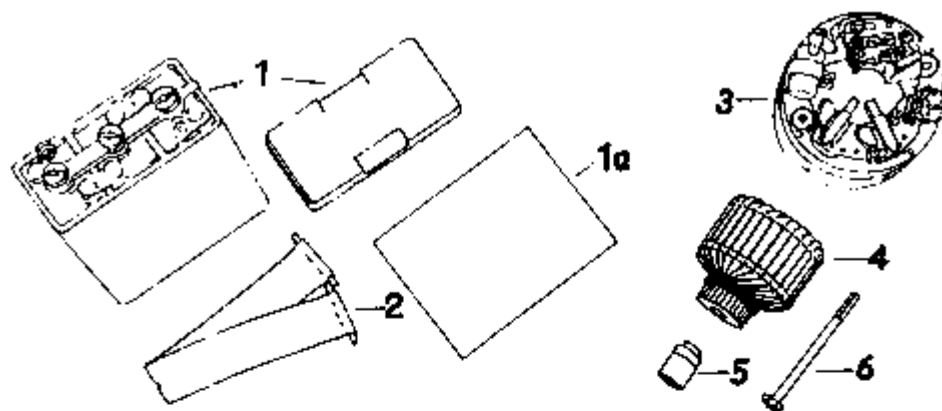
Ref.No.	Part.No.	Description	Quantity	Remarks	x
1	13-30.041	Parcel grid c/w rubber support	1		
	94-05.618	Hexagon screw M 8x25 TGL 0-933-8.8	2		
	94-30.723	Hexagon nut M 8 TGL 0-934-6	2		
	94-37.988	Spring washer B 8 TGL 7403	2		
	00-70.801	Washer 8.4 TGL 0-125-St	2		
	94-04.248	Hexagon screw M 6x25 TGL 0-933-8.8	1		
2	13-30.237	Side luggage carrier (right- and left-hand side) complete	1	delivered in pairs only	
	94-06.161	Hexagon screw M 8x45 TGL 0-933-8.8	2		
	94-30.723	Hexagon nut M 8 TGL 0-934-6	4		
	94-38.386	Spring plate 8 TGL 0-137	4		
	94-05.458	Hexagon screw M 8x20 TGL 0-933-8.8	2		
	94-30.723	Hexagon nut M 8 TGL 0-934-6	2		
	00-70.801	Washer 8.4 TGL 0-125-St	2		
3		Gearchange device complete (hand operated)		after inquiry	
4	16-30.132	Side stand complete	1		
	16-30.128	Carrier with bearing stand	1		
	16-30.183	Stay for carrier	1		

	02-21.105	Bearing sleeve	1		
	05-25.028	Return spring	1		
	13-30.358/02	Leg shields complete	1		
	13-30.351/02	Left leg shield c/w rubber cover	1		
	13-30.337	Frame for left leg shield	1		
	13-30.352/02	Right leg shield c/w rubber cover	1		
	13-30.336	Frame for right leg shield	1		
	13-30.362	Fastening rod for leg shields	1		
	05-25.043	Insulating washer	20		

Electrical Equipment - Table 16

Battery, Dynamo, Regulator Cut-Out

[nächster Punkt](#) ; [Index](#)



Ref.No.	Part.No.	Description	Quantity	Remarks	x
1	95-22.044	* Battery 6 V 12 Ah TGL 25460	1		3
1a	13-30.177	Battery support	1		
2	01-30.232	Rubber strap for battery fastening	1		
3	1366511218710138	* Stator with field coils 8016.4/21-2	1		6
	11218510013	* Initial coil 8016.4/21-2111	1		5
	11218510021	* Central coil (open) 8016.4/21-2112	2		10
	11218510101	* Central coil (crossed) 8016.4/21-2113	2		10
	11218510048	* End coil 8016.4/21-2114	1		5
	94-16.001	Cylinder head screw for stator fastening CM 5x75 TGL 0-84-5.8	2		
	94-38.304	Spring plate 5 TGL 137	2		
4	1366511218810016	* Armature 8016.4/21-1	1		5
5	11218010473	* Cam 8019.2	1		5
6	11-49.012	Hexagon screw for armature fastening M 7x90	1		
	94-37.988	Spring washer B 8	1		
7	1366531200932566	* Contact breaker 1144	1		10
8	31200601599	* Special adjusting plate 8320.3/3-001	1		2
9	11218101068	* Lead for connecting of contact breaker and condenser 8016.5-20:1/2	1		5

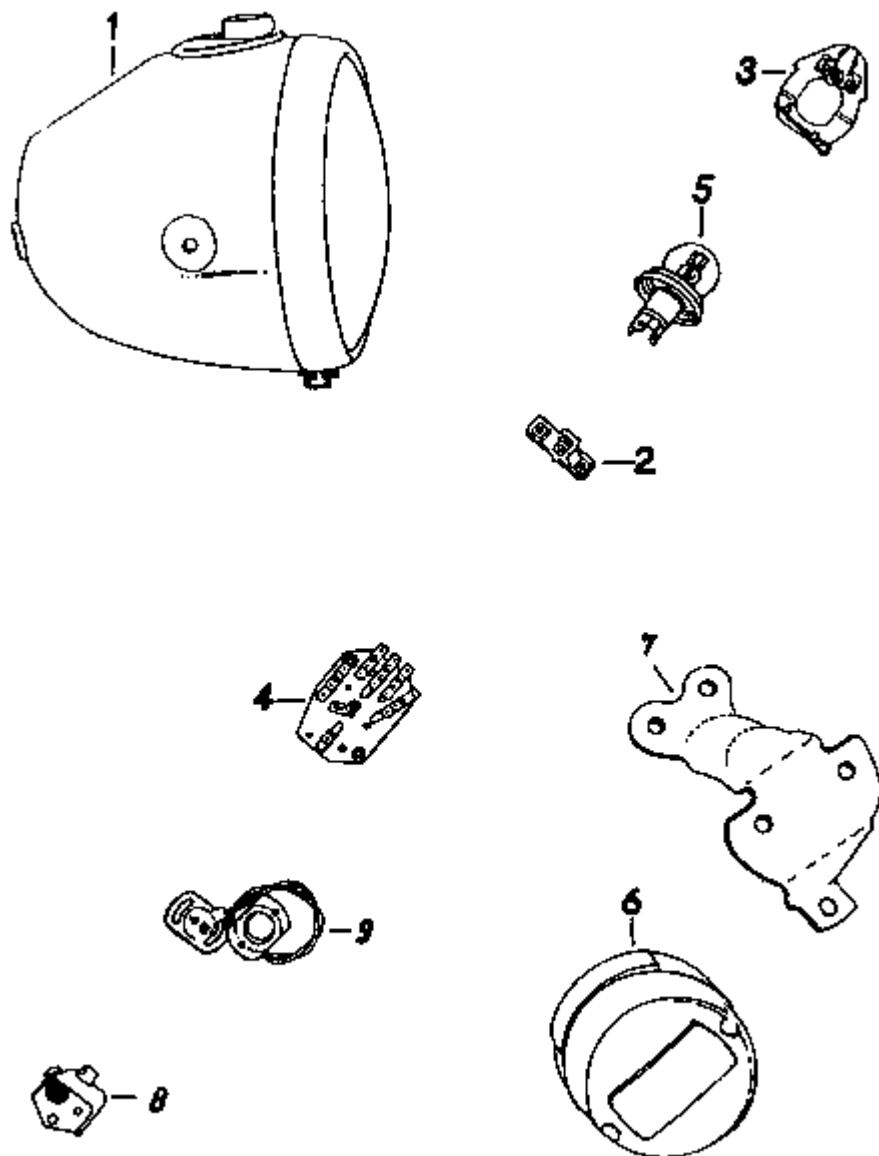
10	1377211106286461	* Condenser 8016.1200:08 G 0.22 µF	1		2
11	1366590008100946	* Condenser clip A FEKN 44	1		
12	11218610065	* Resistance coil 8016.4/21-2.1.4.	1		5
13	90008601679	* Felt wiper 8329.1	1		5
14		* Carbon brush (plus and minus) 8016.1-202	2		20
	11218510056	* Holder for carbon brushes 8016.4/21-2.1.2.1	2		
	11218510064	* Cover for carbon brush holder 8016.4/21-2.1.3.1	2		
	90008089978	* Spring for carbon brush 5 FEKN 20 c 0.4x4.8x14.5 B	2		
	11218010510	* Contact plate 8016.4/21-2.1:1	1		
	90008100022	* Contact plate 8016.4/21-2:4	1		
	90008100962	* Contact plate 8016.4/21-2:3	1		
	13-30.147	* Dynamo lead MK 4/23	1		1
	01-30.252	Rubber sleeve for dynamo lead	1		3
15	1366521002900847	* Regulator cut-out 6 V 60 W 8106.7/2	1		5
	94-16.083	Cylinder head screw M 6x8 TGL 0-84-5.8	3		
	94-37.867	Spring washer B 6 TGL 7403	3		
	94-36.013	Washer 6.4 TGL 0-125-St	1		

16	1366563106901014	* Fuse support 8811.13/2-1	1		
	63202931037	* Fuse A 16 TGL 11135	2		50
	94-15.564	Cylinder head screw M 5x10 TGL 0-84-5.8	2		
17	1366531104930085	* Ignition coil 8351.1/2	1		3
18	31104030001	* Clip for ignition coil fastening 8351.1/1-000:01	1		
	94-03.962	Hexagon screw M 6x16 TGL 0-933-6	2		
	94-30.522	Hexagon nut M 6 TGL 0-934-6	2		
	94-37.867	Spring washer B 6 TGL 7403	2		
19		* Ignition cable ZB TGL 4197	1	delivered in metres	
19a		* Plug cover c/w suppressor AW 14 TGL 2003612	1		10
19b	1366590008089628	* Rubber grommet for ignition cable	1		
	96-36.496	Cable strap ETW-N 60507		delivered in metres	20
	96-36.551	Cable strap knob ETW-N 60507	7		
		All parts of this table signed by * are to be ordered from Fahrzeugelektrik Thalheim/Erzgeb.			

Electrical Equipment - Table 17

Headlamp, Stop and Tail Lamp, Bulbs

[nächster Punkt](#) ; [Index](#)



Ref.No.	Part.No.	Description	Quantity	Remarks	x
1	22-34.021	Headlamp housing	1		3
	22-34.263	Headlamp housing without opening for speedometer	1		
	1366552001810024	* Light unit c/w rim 8706.14-2	1		
	52201910084	* Light unit (assymetrical right-hand side) 8709.1/6	1		
	51201910105	* Light unit (assymetrical left-hand side) 8709.1/9	1	left-hand traffic	
	52001710023	* Rim for headlamp 8706.14-21	1		
	51105308501	* Fixing wire for rim A FERS 450	6		
2	51201308747	* Connecting piece for bulb A FERS	1		2
3	51105309221	* Holder for bulbs A FERS 501	1		2
4	61100930026	* Ignition switch 8528.1/8	1		5
	61100930034	* Cover for ignition switch 8626.1/6-1	1		5
	22-34.226	Packing for ignition switch cover	1		5
		* Fastening for ignition switch 8706.10-310	1		
	95-21.244	Rubber plate FERS 323 (3.2x9x1)	1		
	94-14.965	Cylinder head screw BM 4x8 TGL 0-84-5.8	4		
	1366561100930085	* Ignition key 8629.2	1		5

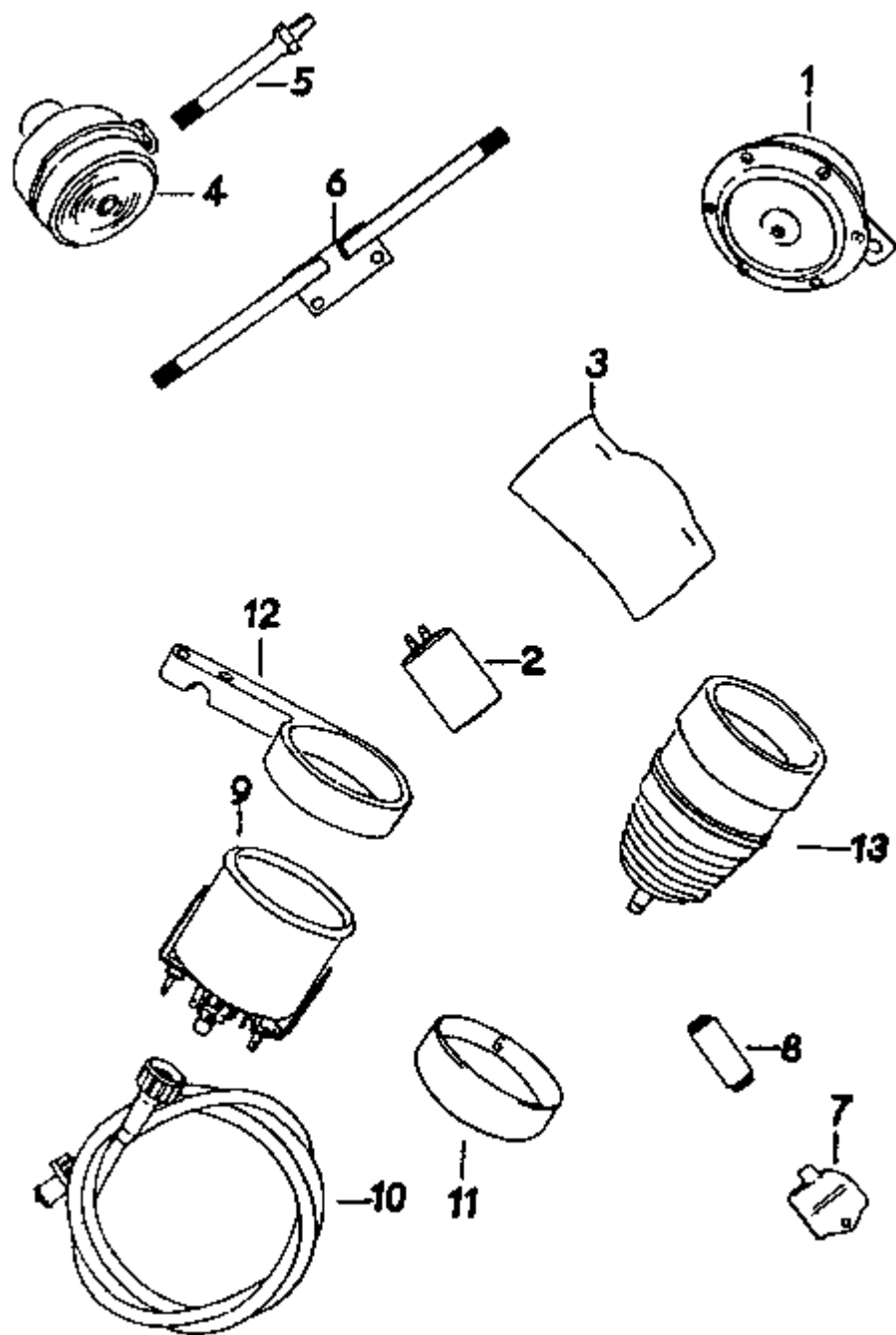
5	1375153002492011	* Headlamp bulb A 6 V 45/40 W P 45 t 41	1		10
	1375154005470605	* Pilot bulb D 6 V 4 W BA 9 s	1		10
	1375154005470541	* Bulb D 6 V 1.2 W BA 7 s	5		10
	1366500009300024	* Rubber grommet for headlamp B FERS 124	2		
	1366522007080316	* Wiring harness 13-30.292	1		1
	19-30.028	Rubber grommet for speedometer cable	1		5
6	1366554808931141	* Stop and tail lamp 8522.11	1		5
	1366545808931168	* Lens for stop and tail lamp 8522.11-210:1	1		5
	1375154005470015	* Bulb for tail light B 6 V 5 W BA 15 s	1		
	1375154005472459	* Bulb for stop light B 6 V 21 W BA 15 s	1		
	94-03.962	Hexagon screw M 6x16 TGL 0-933-8.8	2		
	94-38.345	Spring plate 6 TGL 0-137	1		
	94-37.867	Spring washer B 6 TGL 7403	1		
	13-30.286	Intermediate for stop and tail lamp	1	former design	
	13-30.240	* Stop and tail lamp 8522.7	1	GFR	
	1375154005472512	* Bulb E 6 V 18 W	1	GFR	
		* Bulb E 6 V 10 W	1	GFR	
	94-30.362	Hexagon nut M 5 TGL 0-934-6	3	GFR	

	94-37.826	Spring washer B 5 TGL 7403	3	GFR	
7	13-30.285	Holder for stop and tail lamp, chromium plated	1		
8	1366561901900513	* Passing by switch c/w light signal push 8626.13	1		
	1365922007080957	* Lead for passing by switch 13-30.170	1		
	19-30.035	Cable grommet for passing by lead	1		
	94-28.561	Fillister head screw AM 4x30 TGL 0-85-4.8	1		
	94-30.282	Hexagon nut M 4 TGL 0-934-6	1		
	94-37.787	Spring washer B 4 TGL 7403	1		
9	1366561207900222	* Neutral gear indicator switch 8606.1/1	1		
		All parts of this table signed by * are to be ordered from Fahrzeugelektrik Thalheim/Erzgeb.			

Electrical Equipment - Table 18

Horn, Trafficator Device, Speedometer, Revolution Counter

[nächster Punkt](#) ; [Index](#)



Ref.No.	Part.No.	Description	Quantity	Remarks	x
1	1366542102900150	* Horn 8411.12/1	1		2
	94-30.723	Hexagon nut M 8 TGL 0-934-6	1		
	94-38.386	Spring plate 8 TGL 0-137	1		
2	1366541118901081	* Trafficator unit 6 V 21 W 8581.19	1		2
3	22-34.026	Foam rubber bag	1		2
4	1366554103903431	* Front trafficator 8580.23	2		4
	54103600190	* Lens for front trafficator 8580.23-001/1	2		4
	54103903423	* Rear trafficator 8580.23/1	2		4
	54103600203	* Lens for rear trafficator 8580.23-002/1	2		4
	1375154005472459	* Bulb 6 V 21 W BA 15 s	4		10
5	22-34.097	Carrier for front trafficator	2		2
	94-38.425	Spring plate 10 TGL 0-137	3		
	94-06.965	Hexagon screw M 10x16 TGL 0-933-8.8 for headlamp fastening	2	without trafficator device	
6	22-34.229	Carrier for rear trafficator	1		2
	94-03.962	Hexagon screw M 6x16 TGL 0-933-8.8	2		
	94-37.867	Spring washer B 6 TGL 7403	1		

	94-38.345	Spring plate 6 TGL 0-137	1		
	1365922007084464	* Lead for rear trafficator 22-34.148 (earth)	1		
		* Lead for rear trafficator 13-30.373	1		
	22-34.108	Sealing washer for rear trafficator carrier, plastics	2		
7	1366541900900150	* Trafficator switch 8606.7	1		
	94-20.561	Fillister head screw AM 4x30 TGL 0-84-8.8	1		
	94-30.282	Hexagon nut M 4 TGL 0-934-6	1		
	94-37.787	Spring washer B 4 TGL 7403	1		
	19-30.060	Cover plate (instead of trafficator switch)	1	without trafficator device	
		* Lead for trafficator switch 22-34.025 (trafficator switch/headlamp)	1		
8	1366563106900679	* Protecting sleeve 8819.1/1	1		
	63202931029	* Fuse A 8 TGL 11135 (8A)	1		50
9	95-48.295	Speedometer complete 3.0220/10	1		5
	95-48.301	Speedometer complete 3.0220/10	1	miles indicator	
	95-48.270	Speedometer complete 3.0220/10	1	tropic-proof	
	95-48.246	Speedometer complete with head light indicator lamp (Denmark, Hungary)	1		
	1365922007081642	* Lead for speedometer light 13-30.142	1 ¹		
9	95-48.254	Speedometer 3.0220/10	1 ²		

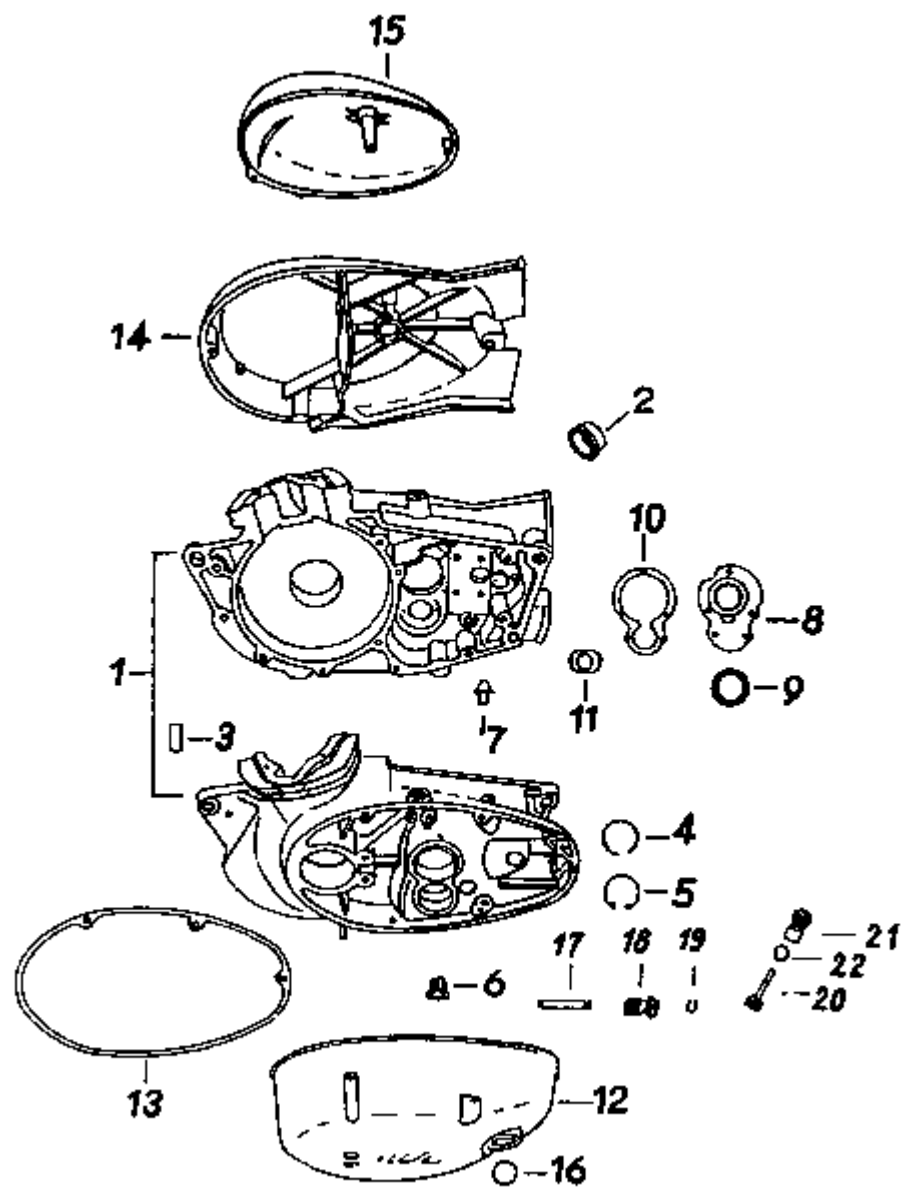
	95-48.342	Speedometer 3.0220/10	1 ²	miles indicator	
	95-48.318	Speedometer c/w head light indicator lamp (Denmark, Hungary)	1 ²		
	95-48.238	Revolution counter 3.0254/04	1		5
		* Lead for speedometer and revolution counter 22-34.265	1		
10	13-30.230	Speedometer cable	1		5
	13-30.375	Speedometer cable	1 ²		5
	13-30.376	Cable for revolution counter A 2/H2-1000 TGL 16253	1 ²		5
11	19-30.061	Distance sleeve for speedometer	1		3
	22-34.113	Sealing ring (rubber)	1		6
	19.30-047	Sealing ring (rubber)	1	used till 1974	
12	22-22.315	Holder for revolution counter	1		2
	22-22.316	Holder for speedometer	1		2
	94-12.440	Cylinder head screw M 8x35 TGL 0-912-8.8	4		
	22-22.314	Cover plug for cylinder head screw	4		20
13	22-34.251	Protective cap	2		
	00-03.039	Circlip	2		
		¹ for bikes without trafficator device 2 leads (one connects the control lights with ignition switch)			
		² for de luxe models (speedometer without fastening bracket, nut and rubber ring)			

		All parts of this table signed by * are to be ordered from Fahrzeugelektrik Thalheim/Erzgeb.			
--	--	--	--	--	--

Engine - Table 19

Crankcase, Revolution Counter Drive

[nächster Punkt](#) ; [Index](#)



Ref.No.	Part.No.	Description	Quantity		Remarks	x
			MM/2 ¹	MM/3		
	12-40.028	Engine MM 125/3 complete	1	1		
	14-40.021	Engine MM 150/3 complete	1	1		
	12-40.030	Engine MM 125/3 c/w revolution counter drive		1		
	14-40.023	Engine MM 150/3 c/w revolution counter drive		1		
1	12-41.043	Crankcase complete		1		2
	12-41.050	Crankcase complete for revolution counterdrive		1		
	11-41.052	Crankcase complete	1			
	13-30.287	Distance washer for rear engine fastening	4	4		
2	11-41.017	Layshaft bush	1	1		
	94-51.527	Dowel pin 6 m 6x20 TGL 0-7-5.8	2	2		
3	05-41.002	Fitting sleeve for crankcase	2	2		
4	00-03.014	Circlip for mainshaft	1	1		
5	94-40.147	Circlip for layshaft 32 TGL 0-472	1	1		
	12-41.042	Separating washer (fitted to left-hand crankcase half)		1		
6	12-41.020	Oil drain plug with magnetic separator	1	1		
	94-68.133	Sealing washer A 18x24 TGL 0-7603-AI	1	1		
	94.05.240	Hexagon screw for oil draining from clutch case M 8x12 TGL 0-933-8.8	1	1		

	94-68.086	Sealing washer A 8x14 TGL 0-7603-AI	1	1		
7	11-41.059	Oil filler plug	1	1		
	94-27.568	Screw plug M 14x1.5 TGL 0-7604-6	1			till 1975
8	11-41.026	Sealing cap for lashaft	1	1		
9	96-59.051	Oil seal D 25x35x7 TGL 16454	1	1		10
	94-18.286	Countersunk screw BM 4x10 TGL 5683-5.8	5	5		
10	11-41.027	Gasket for sealing cap	1	1		50
	94-16.284	Cylinder head screw for crankcase BM 6x20 TGL 0-84-5.9	6	6		
	94-16.686	Cylinder head screw for crankcase CM 6x50 TGL 0-84-5.9	9	10		
	94-16.805	Cylinder head screw for crankcase CM 6x65 TGL 0-84-5.9	1			
	94-68.078	Sealing washer A 6x10 TGL 0-7603-AI	1	1		
	94-57.202	Dowel pin for dynamo locking 2.5x10 TGL 0-1473-5.8	1	1		
11	11-41.018	Locking plug for crankcase (right-hand side)	1	1		
12	12-41.015	Clutch cover	1	1		3
	12-41.017	Clutch cover, high polished	1	1		
	12-41.018	Clutch cover, polished	1	1		
13	11-41.054	Joint washer for clutch cover	1	1		50
	94-16.846	Cylinder head screw CM 6x70 TGL 0-84-5.8	2	2		
	94-16.887	Cylinder head screw CM 6x85 TGL 0-84-5.8	2	2		

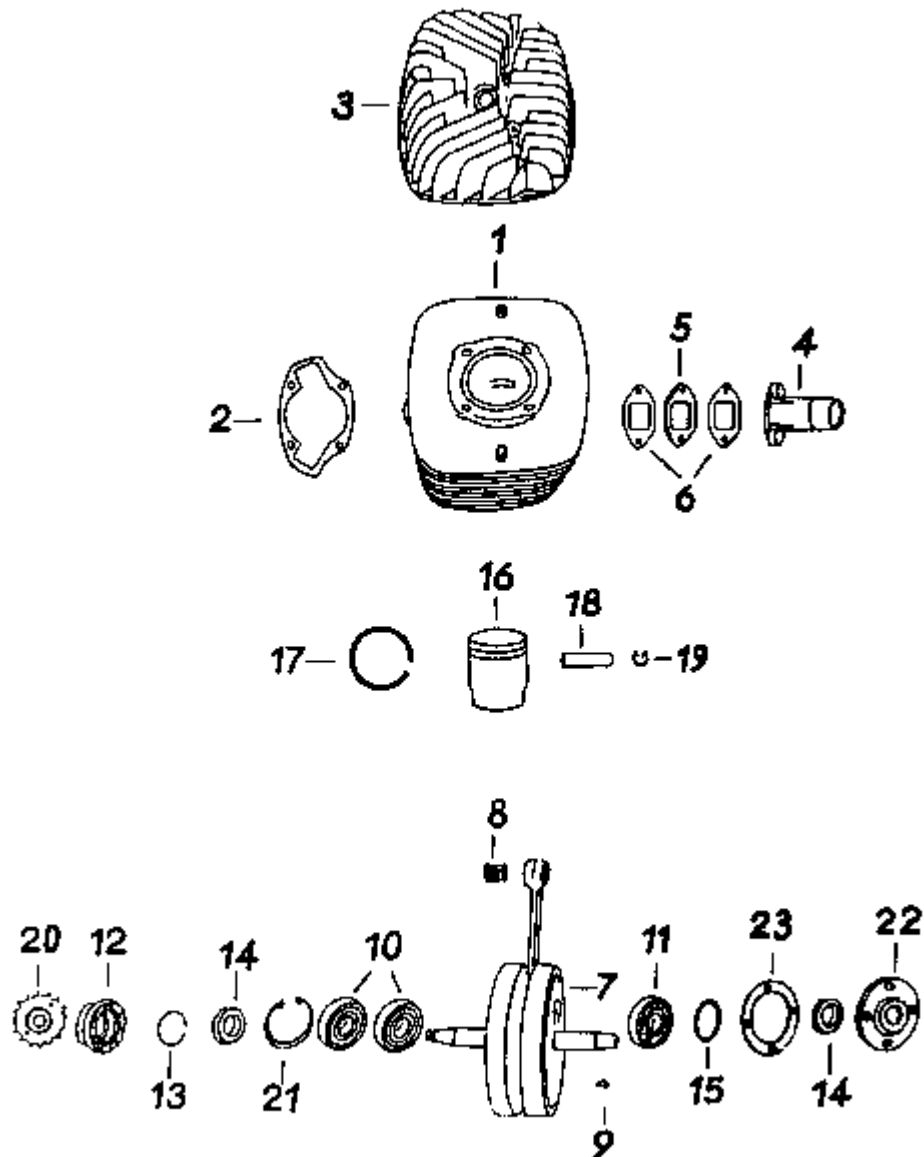
	94-68.078	Sealing washer A 6x10 TGL 0-7603-Al	4	4		
	94-16.122	Cylinder head screw for oil control CM 6x10 TGL 0-84-5.8	1	1		
	94-68.078	Sealing washer A 6x10 TGL 0-7603-Al	1	1		
14	11-41.048	Dynamo cover	1	1		3
	93-74.843	Grease nipple A 6 TGL 0-71412	1	1		
	94-57.323	Dowel pin 4x12 TGL 0-147-5.8	2	2		
	94-16.766	Cylinder head screw CM 6x60 TGL 0-84-5.8	1	1		
	01-41.004	Fitting sleeve	1	1		
15	11-41.046	Cap for dynamo cover	1	1		
	11-41.051	Cap for dynamo cover, high polished	1	1		
	11-41.056	Cap for dynamo cover, polished	1	1		
16	96-72.957	Sealing ring for kickstarter axle 20x2 TGL 6365 WS 2.057	1	1		
17	12-41.048	Bearing bolt for double gear		1		
18	12-41.049	Double gear for revolution counter drive		1		
19	94-38.747	Circlip 9 TGL 0-471		1		
20	29-48.105	Drive shaft complete for revolution counter		1		
21	12-41.053	Drive bush		1		
22	96-72.602	O-ring 14x2 TGL 6365 WS 2.057		1		
	94-03.384	Hexagon screw M 5x12 TGL 0-933-8.8		1		

	94-37.682	Locking plate A 5.3 TGL 0-463-St		1		
		¹ MM 125/2 till engine no. 7372908 MM 150/2 till engine no. 6587572				

Engine - Table 20

Cylinder, Piston, Crankshaft

[nächster Punkt](#) ; [Index](#)



Ref.No.	Part.No.	Description	Quantity		Remarks	x
			MM/2 ¹	MM/3		
1	12-42.022	Cylinder 52 diam.	1	1		10
	14-42.026	Cylinder 56 diam.	1	1		10
	12-41.052	Stud bolt for cylinder fastening M 6x125	4	4		10
	94-30.483	Hexagon nut M 6 TGL 0-934-10	4	4		
	00-70.009	Washer 6.4 TGL 0-125-St	4	4		
2	11-42.005	Cylinder base gasket	1	1		50
3	12-42.023	Cylinder head c/w silencer strip e=10	1	1		2
	14-42.027	Cylinder head c/w silencer strip e=10	1	1		2
	14-42.029	Cylinder head c/w silencer strip e=10	1	1	Denmark	
4	12-42.021	Intake socket	1	1		
	14-42.025	Intake socket	1	1		
5	11-42.009	Insulating flange for intake socket	1	1		
6	11-42.010	Gasket for intake socket	2	2		20
	94-04.248	Hexagon screw M 6x25 TGL 0-933-8.8	2	2		
	94-38.345	Spring plate 6 TGL 0-137	2	2		
	96-78.351	Silencer strip 2x30 TGL 21829, length: 95 mm	2	2	delivered in metres	
	80-50.411	Silencer tube 8x2 -0-65 TGL 13880, length: 95 mm	2	2	delivered in metres	

7	12-43.038	Crankshaft c/w needle bearing		1		10
	14-43.010	Crankshaft complete	1			10
8	94-02.414	Needle bearing K 15x19x20 FKI		1		
	11-35.015	Small end bush	1			
9	94-44.062	Key 4x5 TGL 9499	2	1		
10	93-93.397	Ball bearing for crankshaft 6204 TNWC 4 f TGL 2981 20x47x14		2		20
11	93-94.357	Ball bearing for crankshaft 6304 J C 4 f TGL 2981 20x52x15		1		10
	93-94.260	Ball bearing for crankshaft 6303 C 4 F TGL 2981 17x47x14	3			20
12	12-41.037	Holder for oil seal		1		
13	94-42.124	Circlip 30x2 TGL 31666		1		
14	96-58.565	Oil seal D 20x30x7 TGL 16454 WS 1.028		2		10
	96-58.934	Oil seal D 22x47x7 TGL 16454 WS 1.028	2			
15	00-18.201 till 00-18.203	Distance spacer for crankshaft	if requ.			
	00-18.168 till 00-18.171	Distance spacer for crankshaft	if requ.			
16	93-78.228	Piston complete 52.3 52 diam.	1	1		10
	80-20.112	Piston complete 52.3 52.50 diam.	1	1		
	80-20.114	Piston complete 52.3 53 diam.	1	1		
	80-20.116	Piston complete 52.3 53.50 diam.	1	1		
	80-20.118	Piston complete 52.3 54 diam.	1	1		

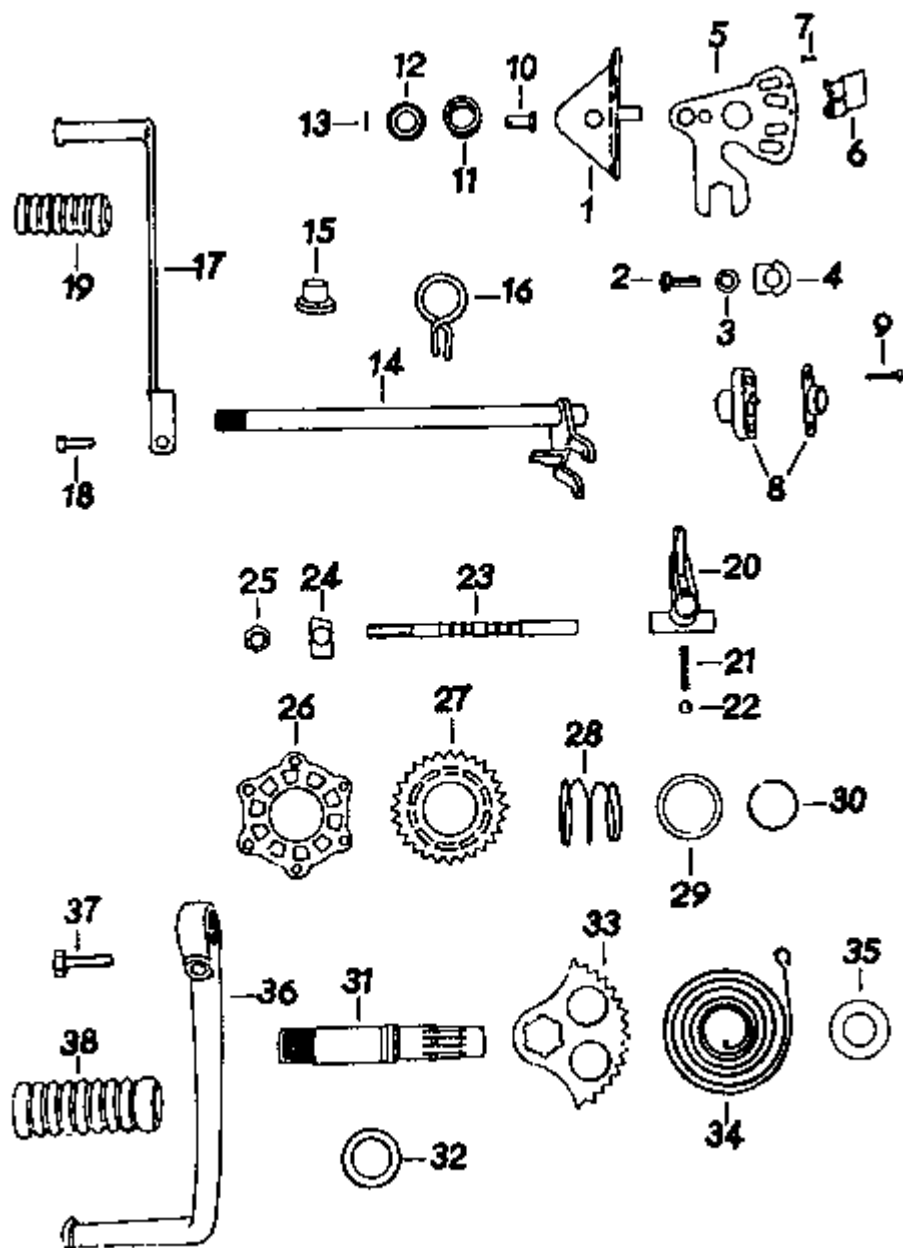
17	80-20.501	Piston ring Z (two-stroke) 52x2	2	2		
	80-20.507	Piston ring Z 52.50x2	2	2		
	80-20.513	Piston ring Z 53x2	2	2		
	80-20.517	Piston ring Z 53.50x2	2	2		
	80-20.521	Piston ring Z 54x2	2	2		
18	80-20.706	Gudgeon pin A 15x10x43 TGL 39-755	1	1		3
16	93-78.180	Piston complete 56.1 56 diam.	1	1		10
	80-20.172	Piston complete 56.1 56.50 diam.	1	1		
	80-20.174	Piston complete 56.1 57 diam.	1	1		
	80-20.176	Piston complete 56.1 57.50 diam.	1	1		
	80-20.178	Piston complete 56.1 58 diam.	1	1		
17	80-20.524	Piston ring Z 56x2	2	2		
	80-20.530	Piston ring Z 56.50x2	2	2		
	80-20.536	Piston ring Z 57x2	2	2		
	80-20.540	Piston ring Z 57.50x2	2	2		
	80-20.544	Piston ring Z 58x2	2	2		
18	80-20.712	Gudgeon pin A 15x10x47 TGL 39-755	1	1		
19	80-04.006	Circlip 15 TGL 0-73-123	2	2		
20	12-47.010	Sprocket at crankshaft		1 ²		

	12-47.004	Sprocket at crankshaft	1 ³			
	12-47.003	Sprocket at crankshaft	1		simplex chain	
	94-07.291	Hexagon screw M 10x25 TGL 0-933-10.9	1			
	00-18.207	Washer	1			
	94-38.425	Spring plate	1			
	94-31.201	Hexagon nut M 12x1.5 TGL 0-936-5	1			
	94-38.466	Spring plate 12 TGL 0-137	1			
21	94-40.942	Circlip for crankshaft 47 TGL 0-472	1	1		
22	12-41.040	Sealing cap		1		
	11-41.047	Sealing cap	1			
23	12-41.041	Gasket for sealing cap		1		50
	11-41.058	Gasket for sealing cap	1			50
	94-18.768	Hexagon screw BM 5x16 TGL 5683-5.8	4	4		
		¹ MM 125/2 till engine no. 7372908 MM 150/2 till engine no. 6587572				
		² MM 125/3 from engine no. 7372909 MM 150/3 from engine no. 6587573				
		³ MM 125/2 from engine no. 7324450 MM 150/2 from engine no. 6444237				

Engine - Table 21

Gearchange, Kickstarter

[nächster Punkt](#) ; [Index](#)



Ref.No.	Part.No.	Description	Quantity		Remarks	x
			MM/2 ¹	MM/3		
1	11-45.006	Retaining plate for gearchange quadrant	1	1		
2	94-03.962	Hexagon screw M 6x16 TGL 0-933-8.8	2	2		
3	94-36.013	Washer 6.4 TGL 0-125-St	2	2		
4	01-45.009	Locking plate	2	2		
5	11-45.002	Gearchange quadrant	1	1		
6		Contact plate 8606.1/1-1 (4)	1 ²	1 ²		
7	94-45.520	Button head rivet 2.5x8 TGL 0-660-Mu 8	2	2		
8	1366561207900222	Neural gear indicator complete 8606.1/1	1 ²	1 ²		
9	94-15.121	Cylinder head screw AM 4x16 TGL 0-84-5.8	2	2		
	96-75.197	Rubber plug for neutral gear indicator lead	1	1		
10	11-45.007	Bolt for gearchange quadrant	1	1		
11	01-45.007	Spring	1	1		
12	01-45.006	Retainer for spring	1	1		
13	01-45.008	Locking pin for retainer	1	1		
14	11-45.032	Gearchange shaft with gearchange body	1	1		3
15	11-45.034	Distance ring	1	1		

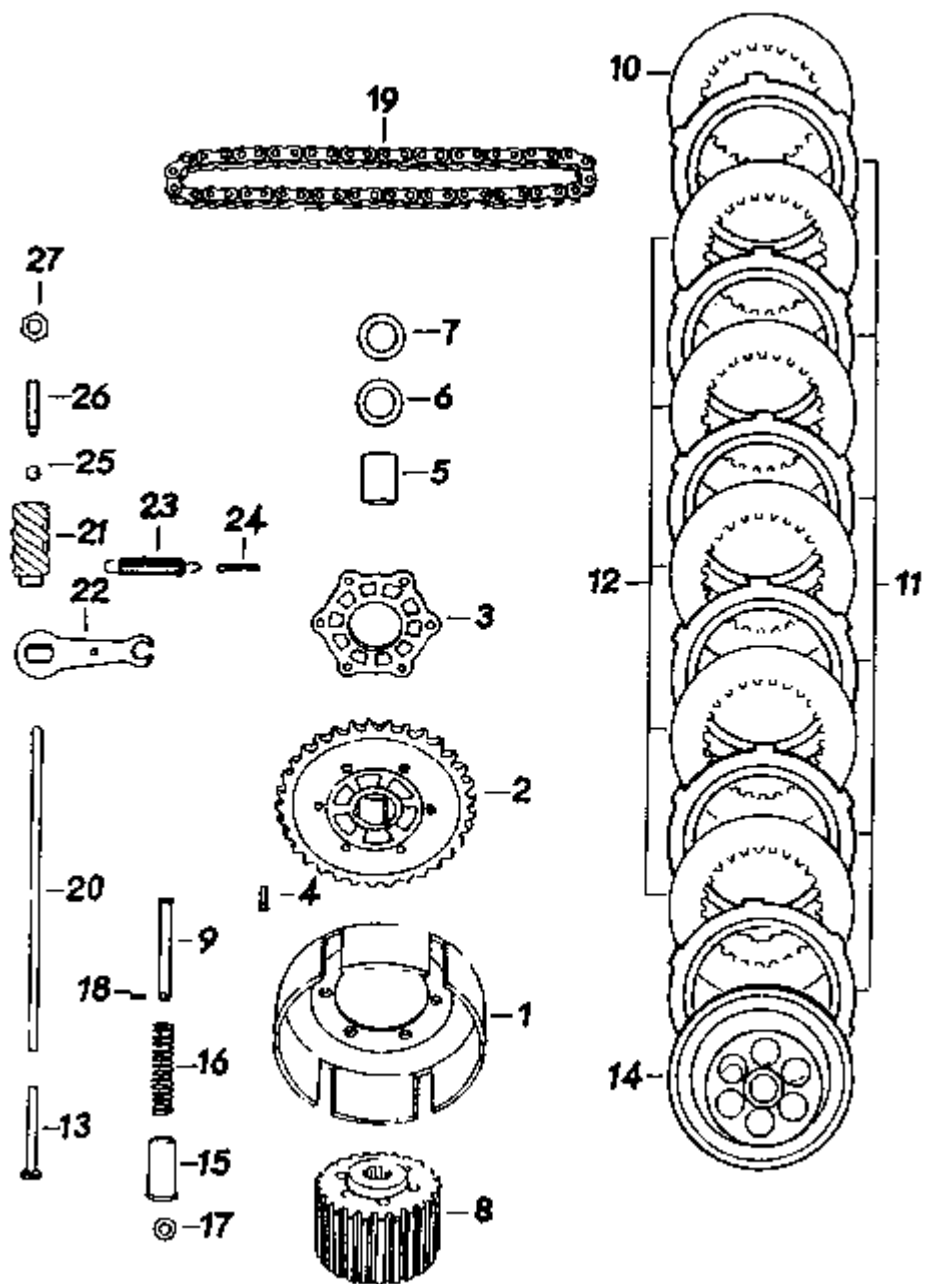
16	01-45.015	Return spring	1	1		3
17	12-45.003	Gearchange pedal	1	1		3
18	94-04.248	Hexagon screw M 6x25 TGL 0-933-8.8	1	1		
	94-38.345	Spring plate 6 TGL 0-137	1	1		
	94-30.522	Hexagon nut M 6 TGL 0-934-6	1	1		
19	05-47.050	Pedal rubber	1	1		20
20	11-45.013	Gearchange dog	1	1		3
21	94-61.578	Spring for gearchange dog C 1.2x6x11.5 TGL 18395	1	1		
22	94-00.902	Steel ball 6.35 IV TGL 15515	1	1		
23	11-45.046	Arresting gearchange shaft	1	1		
24	11-45.017	Locking plate	1	1		
25	00-06.048	Hexagon nut M 8	1	1		
26	01-44.009	Kickstarter ratchet	1	1		
27	11-44.006	Kickstarter pinion	1	1		5
28	01-44.011	Spring for kickstarter pinion	1	1		
29	01-44.012	Retainer for spring	1	1		
30	00-03.016	Circlip for retainer	1	1		
31	11-44.011	Kickstarter axle	1	1		
32	00-01.073	Plain washer for kickstarter axle	1	1		

33	11-44.013	Kickstarter quadrant	1	1		5
34	01-44.003	Kickstarter spring	1	1		3
35	11-44.014	Check plate	1	1		
36	12-44.005	Kickstarter pedal	1	1		2
37	94-05.618	Hexagon screw M 8x25 TGL 0-933-8.8	1	1		
38	05-46.096	Pedal rubber	1	1		20
		¹ MM 125/2 till engine no. 7372908 MM 150/2 till engine no. 6587572				
		² supplied by Fahrzeugelektrik Thalheim/Erzgeb.				

Engine - Table 22

Clutch

[nächster Punkt](#) ; [Index](#)



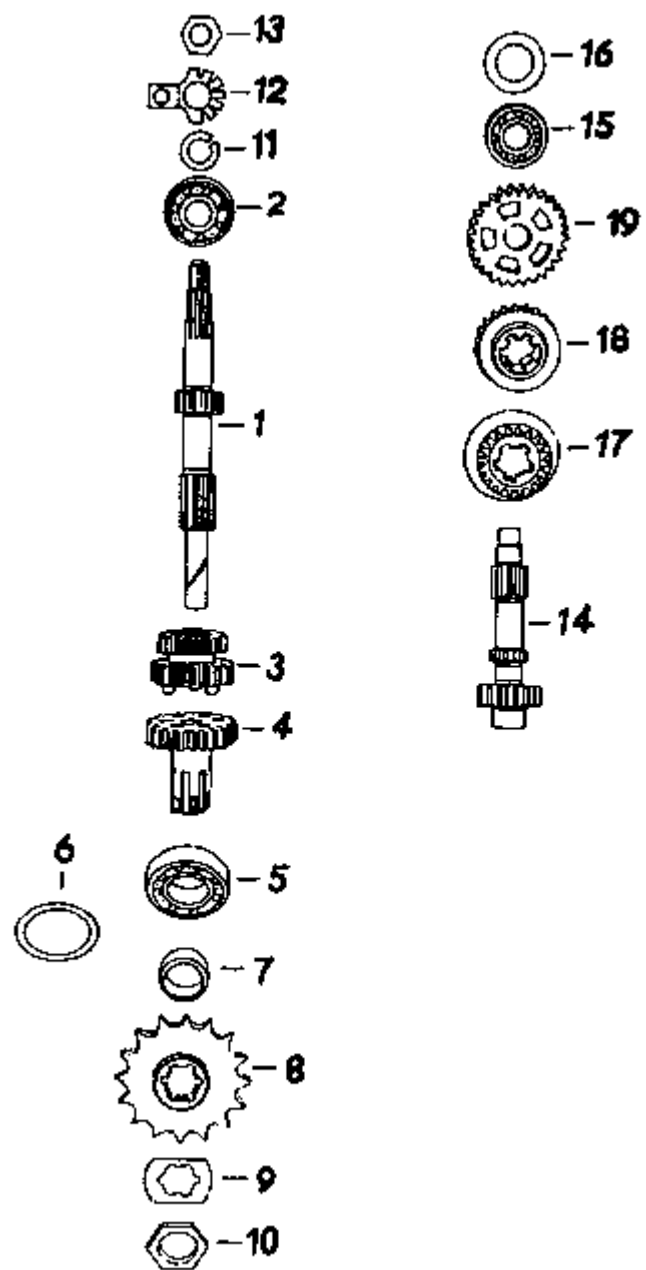
Ref.No.	Part.No.	Description	Quantity		Remarks	x
			MM/2 ¹	MM/3		
1	11-46.001	Clutch drum	1	1		2
2	11-46.029	Clutch sprocket	1	1		
	11-46.016	Clutch sprocket	1 ²			
3	01-44.009	Kickstarter ratchet	1	1		5
4	94-47.137	Countersunk rivet 4x18 TGL 0-661-Mu 8	6	6		
	94-47.040	Countersunk rivet 4x16 TGL 0-661-Mu 8	6 ²			
5	01-46.001	Pinion sleeve for clutch sprocket	1	1		
6	00-01.050	Check plate	1	1		
7	00-18.164 till 00-18.167	Distance spacer 0.1; 0.2; 0.3; 0.5	if requ.	if requ.		
8	12-46.003	Clutch centre	1	1		5
	12-46.002	Clutch centre	1 ²			
9	11-46.009	Bolt for spring	6	6		
10	01-46.007	Retainer plate	1	1		2
11	96-81.041	Driving plate (bonded) 6 TGL 39-716	6	6		24
12	11-46.021	Driven plate	5	5		20
13	01-46.006	Pressure bolt	1	1		3

14	01-46.062	Pressure plate complete	1	1		2
15	01-46.063	Spring cap	6	6		
16	01-46.064	Spring	6	6		24
17	11-46.010	Supporting nipple	6	6		10
18	11-46.011	Bolt for spring	6	6		20
19	11-47.051	Endless primary chain 3/8 inch x 3/16 inch (duplex)	1	1		5
	11-47.022	Endless primary chain 062 C-48 TGL 39-764	1 ²			
20	11-46.003	Pressure rod for clutch	1	1		3
21	01-46.066	Pressure spindle	1	1		
22	11-46.013	Lever for pressure spindle	1	1		
23	11-46.020	Spring for clutch lever	1	1		
24	94-43.141	Splint pin 3.2x16 TGL 0-94-St	1	1		
25	94-00.902	Steel ball for pressure rod 6.35 IV TGL 15515	1	1		
26	00-70.006	Adjusting bolt M 8x30 TGL 0-417 M 8-6 g	1	1		
27	94-30.723	Hexagon nut M 8 TGL 0-934-6	1	1		
		¹ MM 125/2 till engine no. 7372908 MM 150/2 till engine no. 6587572				
		¹ MM 125/2 till engine no. 7324449 MM 150/2 till engine no. 6444236				

Engine - Table 23

Gears, Shafts

[nächster Punkt](#) ; [Index](#)



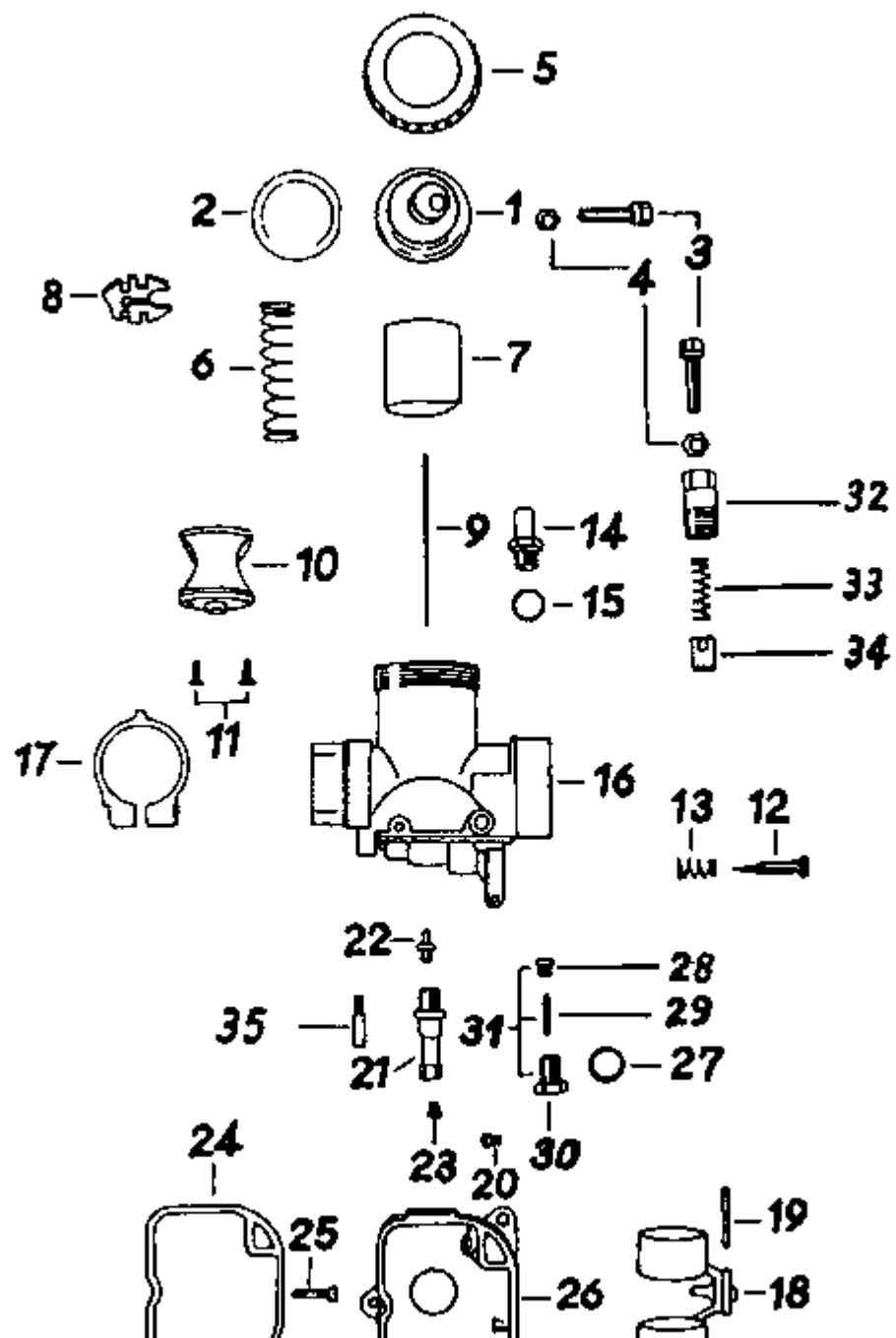
Ref.No.	Part.No.	Description	Quantity		Remarks	x
			MM/2 ¹	MM/3		
1	11-47.048	Mainshaft	1	1		3
2	93-93.147	Ball bearing 6202 TN C 3 TGL 2981 15x35x11	1	1		10
3	11-47.007	Sliding gear (2nd and 4th gear)	1	1		3
4	11-47.010	Mainshaft high gear with bush	1	1		5
5	93-92.708	Ball bearing 6004 TN TGL 2981 20x42x12	1	1		5
6	00-18.161 till 00-18.163	Distance spacer 0.2; 0.3; 0.5	if requ.	if requ.		
7	11-47.044	Spacer for sprocket	1	1		
	11-47.019	Sprocket wheel at gearbox 16 teeth	1	1		
8	11-47.018	Sprocket wheel at gearbox 15 teeth	1	1		
9	01-47.008	Locking plate	1	1		10
10	00-06.008	Nut for sprocket wheel fastening M 20x1 left-handed	1	1		
11	94-38.064	Spring washer B 12 TGL 7403	1	1		
12	01-46.068	Locking plate	1	1		20
13	94-31.242	Nut M 12x1.5 TGL 0-934-6 left-handed	1	1		
14	11-47.034	Layshaft	1	1		5
15	93-93.106	Ball bearing 6201 TN C 3 TGL 2981 12x32x10	1	1		10

16	00-18.063	Splash washer for layshaft	1	1		5
17	11-47.050	Sliding gear (3rd gear)	1 ²	1 ²		5
18	11-47.050	Sliding gear (1st gear)	1 ²	1 ²		5
	00-03.045	Circlip	1	1		
19	11-47.016	Gear (1st gear)	1	1		3
		¹ MM 125/2 till engine no. 7372908 MM 150/2 till engine no. 6587572				
		² are delivered in pairs only				

Engine - Table 24

Monoblock-Starting Device Carburettor

[Index](#)



Ref.No.	Part.No.	Description	Quantity		Remarks	x
			MM/2 ¹	MM/3		
	93-77.380	Monoblock-Starting device carburettor 22 N 1-3	1	1		2
	93-77.428	Monoblock-Starting device carburettor 24 N 1-1	1	1		2
1	80-30.320	Mixing chamber cap 2931	1	1		
2	80-30.325	Gasket 2936	1	1		
3	80-30.303	Cable adjuster 2914	1	1		
4	80-30.101	Hexagon nut 0002	1	1		
5	80-30.322	Mixing chamber top 2933	1	1		
6	80-30.329	Throttle return spring 2946	1	1		
7	80-30.343	Throttle valve (30) 2952	1	1		
8	80-30.327	Needle clip 2943	1	1		
9	80-30.319	Jet needle C 3 2930	1	1		
10	80-30.324	Jet block complete 2935	1	1		
	80-30.309	Jet block complete 2923	1	1		
11	80-00.304	Oval head screw BM 4x10 TGL 5687	2	2		
12	80-30.108	Air adjusting screw 0013	1	1		
13	80-30.107	Spring 0011	1	1		

14	80-30.307	Petrol pipe nipple 6 mm C 6 TGL 39-388 2921	1	1	fitted fastly to mixing chamber from 1976	
15	80-60.105	Fibre washer C 10x14 TGL 0-7603-Vf	1	1		
16	80-30.323	Mixing chamber 2934	1	1		
	80-30.308	Mixing chamber 2922	1	1		
17	80-30.126	Clamping ring complete 0121	1	1		
18	80-30.316	Float 2928	1	1		
19	80-03.024	Dowel pin 2.5 m 6x25 TGL 0-7	1	1		
20	80-30.129	Starting jet (70) 0125	1	1		
	80-30.130	Starting jet (75) 0125	1	1		
21	80-30.315	Jet holder 2927	1	1		
22	80-30.312	Needle jet (65) 2926	1	1		
23	80-30.131	Main jet (90) 0125	1	1		
	80-30.133	Main jet (95) 0125	1	1		
24	80-30.321	Fibre washer 2932	1	1		
25	94-15.121	Cylinder head screw AM 4x16 TGL 0-84	1	1		
26	80-30.310	Float chamber 2924	1	1		
27	80-60.105	Fibre washer C 10x14 TGL 0-7603-Vt	1	1		
28	80-30.160	Needle seating (15) 1534	1	1		
29	80-30.159	Float needle 1533	1	1		

30	80-30.302	Float needle cover nut 2911	1	1		
31	80-30.300	Float needle valve compl. (15) 2910	1	1		
32	80-30.299	Starting device cover nut 2907	1	1		
33	80-30.296	Spring 2903	1	1		
34	80-30.297	Plunger 2905	1	1		
	80-30.298	Rubber plate for plunger 2906	1	1		
35	80-30.304	Pilot jet (35) 2916	1	1		
	80-30.305	Pilot jet (40) 2916	1	1		