

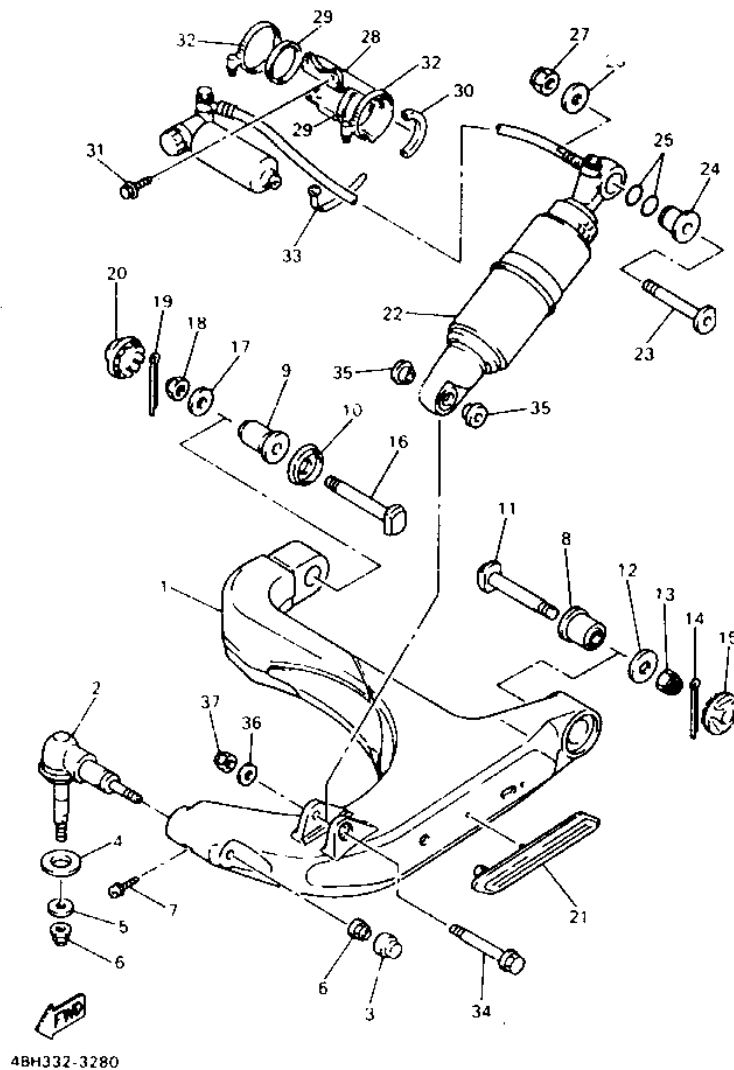
GTS 1000AE '93 Microfiche

Description	Page	Description	Page
ENGINE		Front Fork.....	D14,D15
General info.....	A4	Fuel tank.....	E2
Cylinder Head.....	B2	Seat.....	E3
Cylinder.....	B3	Front Wheel.....	E4
Crankshaft - Piston	B4	Front brake Caliper.....	E5
Valve.....	B5,B6	Rear Wheel.....	E6,E7
Camshaft - Chain.....	B7	Rear Brake Caliper.....	E8
Water Pump.....	B8	Steering Handle - Cable.....	E9,E10
Radiator.....	B9,B10	Front Master Cylinder.....	E11,E12
Oil Pump.....	B11,B12	Front Master Cylinder 2.....	E13
Oil Cleaner.....	B13	Stand - Footrest.....	E14~F2
Intake.....	B14,B15	Rear Master Cylinder.....	F3
Intake 2.....	C2,C3	Cowling 1.....	F4~F6
Exhaust.....	C4	Cowling 2.....	F7,F8
Crankcase.....	C5,C6	Cowling 3.....	F9
Crankcase Cover 1.....	C7,C8	Generator.....	F10
Starter.....	C9	Pick Up Coil - Governor.....	F11
Clutch.....	C10	Starting Motor.....	F12
Transmission.....	C11,C12	Flasher Light.....	F13
Shift Cam - fork	C13	Meter.....	F14
Shift Shaft.....	C14	Headlight.....	F15
CHASSIS		Taillight.....	G2
Frame.....	C15,D2	Electrical 1.....	G3
Front Fender.....	D3	Electrical 2.....	G4,G5
Rear Fender.....	D4,D5	Electrical 3.....	G6
Cover.....	D6,D7		
Side Cover.....	D8,D9		
Read Arm.....	D10		
Steering.....	D11		
Steering 2.....	D12,D13		

[Retour à la page GTS](#)

[back to to GTS page](#)

FIG. 28 STEERING 2



REF. NO.	PART NO.	DESCRIPTION	QTY	REMARKS
1	4BH-23570-01-P1	FRONT LOWER ARM COMP (LEFT)	1	LIGHT YELLOWISH GRAY 1
2	4BH-23579-00	BALL JOINT 2	1	
3	4BH-2319U-00	CAP	1	
4	4BH-23165-00	WASHER, FELT	1	
5	90201-120A5	WASHER, PLATE	1	
6	95611-12200	NUT, SELF-LOCKING	2	
7	90105-06697	BOLT, WASHER BASED	1	
8	4BH-23873-00	BEARING, STEERING UPPER	1	
9	4BH-23875-00	PLANE BEARING, STEERING LOWER	1	
10	4BH-23123-00	COVER, LOWER 1	1	
11	4BH-23366-00	BOLT, UPPER	1	
12	90201-182R4	WASHER, PLATE	1	
13	95301-18900	NUT	1	
14	91401-40040	PIN, COTTER	1	
15	4BH-23338-00	CAP, SIDE 1	1	
16	4BH-23367-00	BOLT, LOWER	1	
17	90201-177M0	WASHER, PLATE	1	
18	95301-16900	NUT, SLOTTED	1	
19	91401-30040	PIN, COTTER	1	
20	4BH-23339-00	CAP, SIDE 2	1	
21	4BH-23815-00	PAD, STEERING	1	
22	4BH-23350-20-93	SHOCK ABSORBER ASSY	1	CHROME MEKKI
23	4BH-23346-00	BOLT 1	1	
24	4BH-23113-00	COLLAR	1	
25	93210-20027	O-RING	2	
26	90201-161J3	WASHER, PLATE	1	
27	95611-16100	NUT, U	1	
28	4BH-22276-00	HOLDER, SUB-TANK 2	1	
29	4BH-22261-00	DAMPER, SUB TANK	2	
30	3EN-28345-50	MOLE 1	1	
31	91001-06016	BOLT, FLANGE	2	
32	90460-50079	CLAMP, HOSE	2	
33	90464-12089	CLAMP	1	
34	90109-106F7	BOLT	1	
35	90387-120Y8	COLLAR	2	
36	90201-10437	WASHER, PLATE	1	
37	95611-10100	NUT, U	1	

D14

D15

FOREWORD

This Parts Catalogue is related to the parts in use for the Yamaha GTS1000AE (4HH3). When you are ordering replacement parts for the GTS1000AE (4HH3), refer to this Parts Catalogue and quote both part numbers and part names correctly.

- 1 Modifications or additions which have been made after issue of the Parts Catalogue will be announced in the Yamaha Parts News.
It is advisable that according to the Yamaha Parts News you make necessary corrections to the Parts Catalogue on hand to keep it up-to-date.

2 Abbreviations

The following abbreviations are used in this Parts Catalogue.

U.R	Use size (thickness) and / or number as required
U.N.	Use as many as you need
A.P.	Alternate Parts
L.M.	Local Made
F#	Frame No. (Applicable machine No.)

- 3 The parts marked with (*) in the parts number column of this Catalogue are not supplied with by Yamaha, those have to be found locally.
- 4 Parts, which are to be supplied in the form of assemblies, are listed with an indentation of one letter's space, and a dot (.) is put against the name of each part.

EXAMPLE CARBURETOR ASS'Y
 .JET, pilot
 .NOZZLE, main

5 Indication of No. of constituent parts for assembly

The numeral appearing to the right of each constituent part under the description indicates the quantity of such parts for each individual assembly unit.

EXAMPLE

Part No.	Description	Q'ty	Remarks
2F5-83310-60	FRONT FLASHER LIGHT ASS'Y	2	
115-83311-60	.BULB (6V-18W)	1	
1M1-83309-60	.REFLECTOR	1	

6 Initial Serial No. and Color Code

A Frame Serial No.	4HH-00211 and following
B Engine Serial No.	4HH-002101 and following



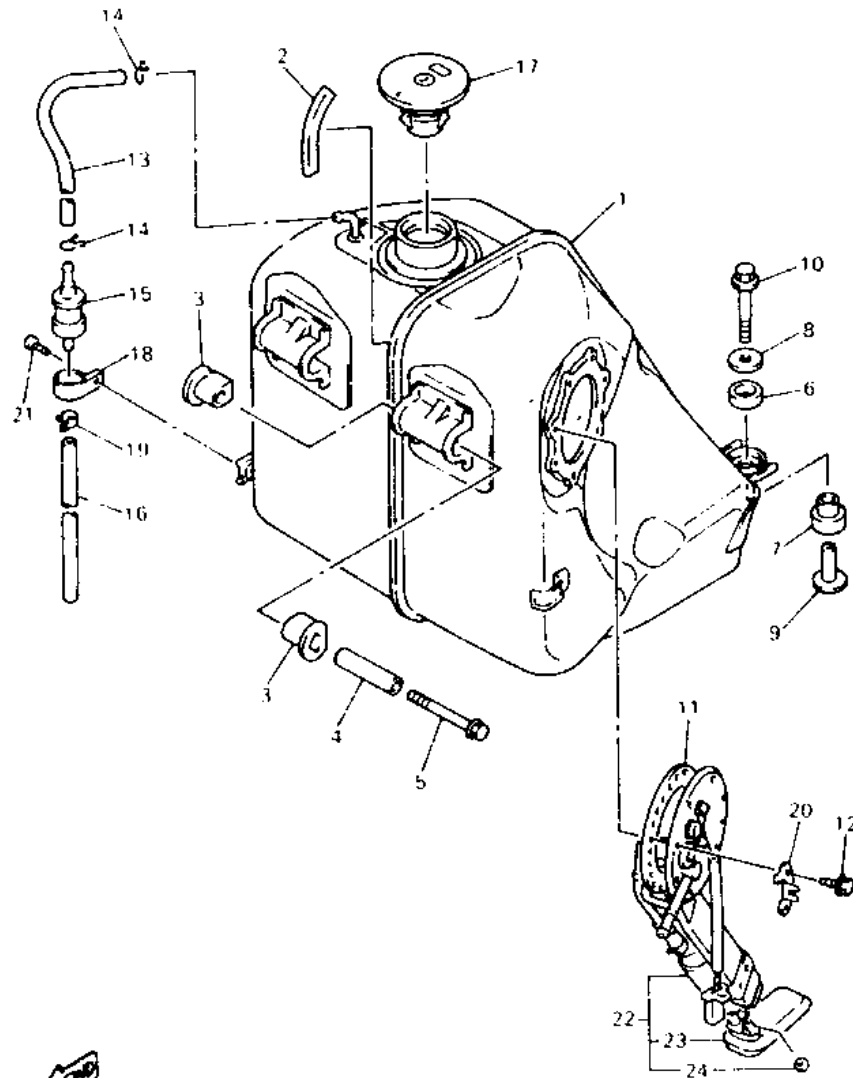
Color Code	Color Name	Abbreviate
0376	DEEP RED COCKTAIL 2	DRC2

- 7 Applicable colors of graphics are represented in the "Remarks" column by the letter(s) appropriately picked out of the full word(s) showing such colors.

EXAMPLE

Part No.	Description	Q'ty	Remarks
2N4-24110-00-X5	FUEL TANK COMP.	1	MAXIM RED
3J1-24240-10	.GRAPHIC, fuel tank set	1	for MXR

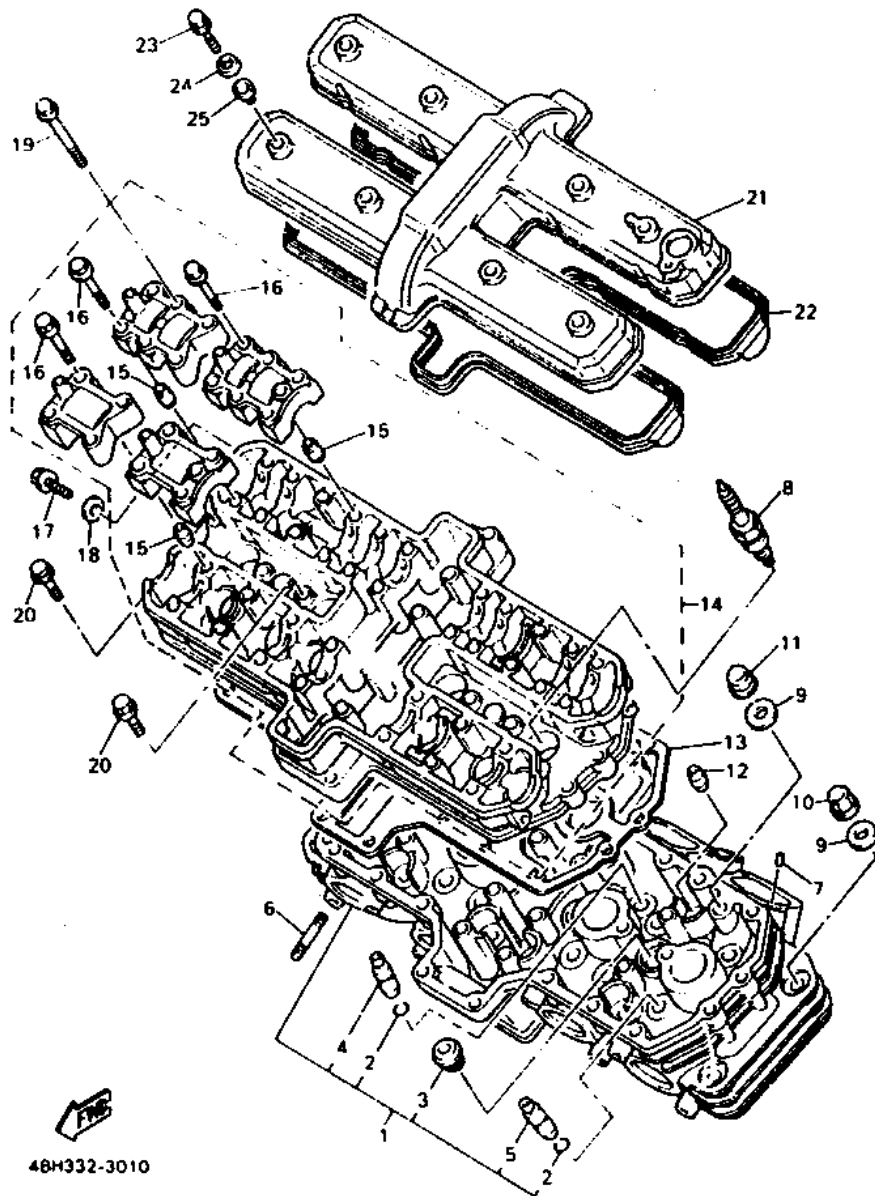
FIG. 29 FUEL TANK



48H332-3290

REF. NO.	PART NO.	DESCRIPTION	QTY	REMARKS
1	4BH-24110-00	FUEL TANK COMP	1	
2	3VD-24188-00	MOLD, FUEL TANK	1	
3	4BH-24181-00	DAMPER, LOCATING 1	4	
4	90387-06380	COLLAR	2	
5	95811-06080	BOLT, FLANGE	2	
6	4BH-24183-00	DAMPER, LOCATING 3	2	
7	90480-10570	GROMMET	2	
8	90201-08612	WASHER, PLATE	2	
9	90387-0801N	COLLAR	2	
10	95811-08045	BOLT, FLANGE	2	
11	4BH-2414G-00	SEAL	1	
12	90119-05071	BOLT, WITH WASHER	7	
13	90445-11735	HOSE	1	
14	90467-09006	CLIP	2	
15	25H-24180-00	ROLL OVER VALVE ASSY	1	
16	90445-105G5	HOSE	1	
17	3HE-24602-00	CAP ASSY	1	
18	90461-15100	CLAMP	1	
19	90467-10038	CLIP	1	
20	4BH-24366-00	CLAMP, FUEL PIPE 1	1	
21	98580-05010	SCREW, PAN HEAD	1	
22	4BH-13907-00	FUEL PUMP COMP	1	
23	4BH-13939-00	FILTER	1	
24	4BH-13995-00	WASHER	1	

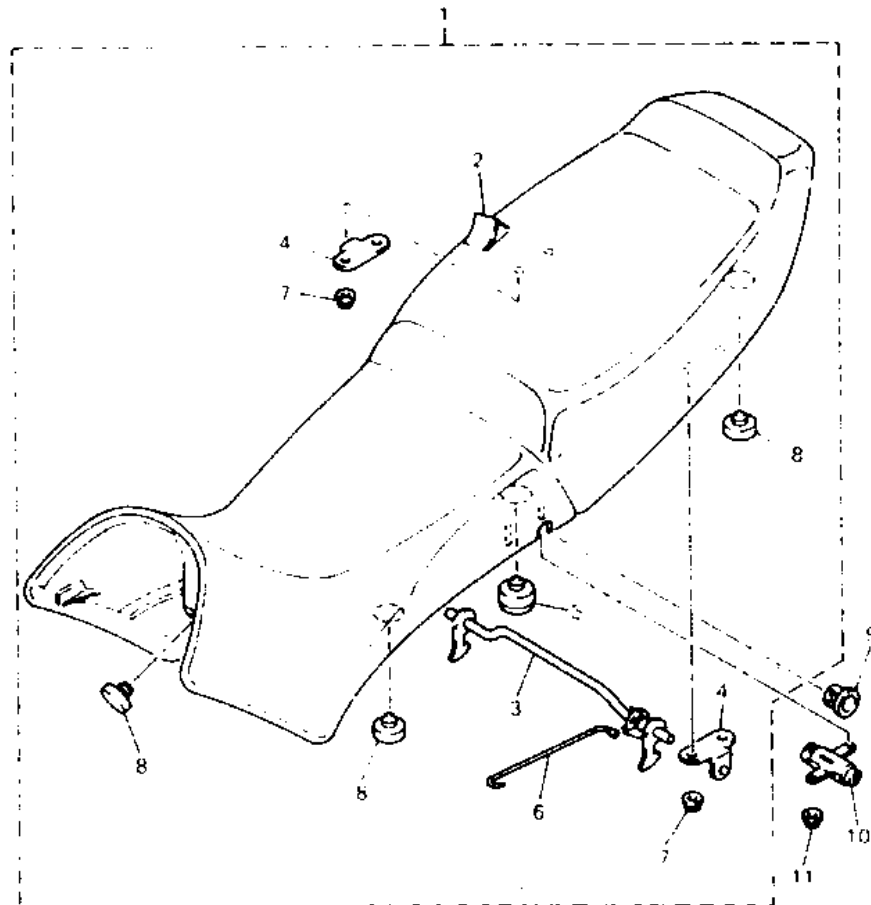
FIG. 1 CYLINDER HEAD



REF. NO.	PART NO.	DESCRIPTION	QTY	REMARKS
1	4BH-11102-00	CYLINDER HEAD ASSY	1	
2	93440-10153	.CIRCLIP	20	
3	90340-16101	.PLUG, STRAIGHT SCREW	4	
4	3GM-11133-10	.GUIDE, INTAKE VALVE	12	
5	3GM-11134-10	.GUIDE, EXHAUST VALVE	8	
6	95611-08625	BOLT, STUD	8	
7	93604-10011	PIN, DOWEL	8	
8	94701-00241	PLUG, SPARK (NGK DPR8EA-9)	4	UR
	94701-00242	PLUG, SPARK (ND X24EPR-U9)	4	UR
9	90201-103M4	WASHER, PLATE	12	
10	90176-10049	NUT, CROWN	4	
11	90179-10584	NUT	8	
12	99530-10014	PIN, DOWEL	2	
13	3GM-11182-00	GASKET, CYLINDER HEAD 2	1	
14	4BH-1115A-00	CAM CASE ASSY	1	
15	99510-08016	.PIN DOWEL	16	
16	90105-06153	.BOLT, WASHER BASED	16	
17	95023-06012	BOLT	1	
18	90430-06014	GASKET	1	
19	90105-06541	BOLT, WASHER BASED	24	
20	95023-06025	BOLT	11	
21	4BH-11191-00	COVER, CYLINDER HEAD 1	1	
22	3GM-11193-00	GASKET, HEAD COVER 1	1	
23	90109-064F0	BOLT	8	
24	90209-11262	WASHER	8	
25	2GH-1111G-00	RUBBER, MOUNT 1	8	

B2

FIG. 30 SEAT



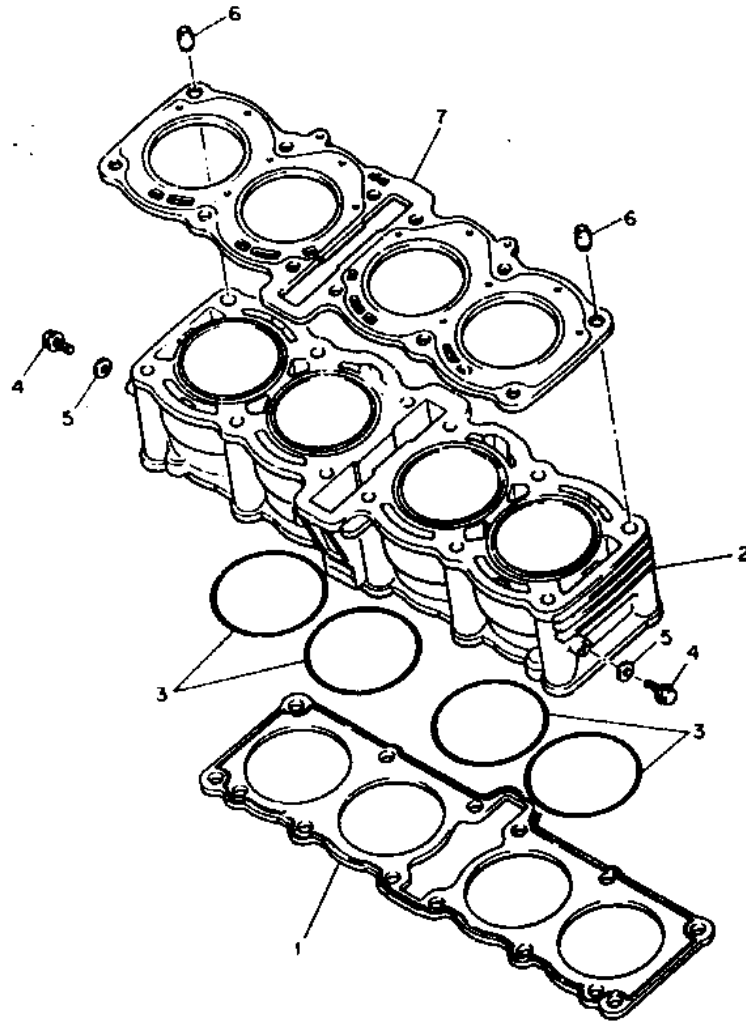
REF. NO.	PART NO.	DESCRIPTION	QTY	REMARKS
1	4BH-24730-00	DOUBLE SEAT ASSY	1	
2	4BH-2470F-00	.COVER, SEAT	1	
3	4BH-24776-00	.LEVER, SEAT	1	
4	4BH-24718-00	.BRACKET, SEAT	2	
5	1T4-24741-00	.PAD, SEAT	2	
6	4BH-2478F-00	.ROD, CONNECTING	1	
7	95701-06500	.NUT, FLANGE	4	
8	22W-24741-00	.PAD, SEAT	5	
9	51Y-24796-00	COVER	1	
10	4BH-24705-00	SEAT LOCK ASSY	1	
11	95701-05500	NUT, FLANGE	2	



4BH332-3300

E3

FIG. 2 CYLINDER

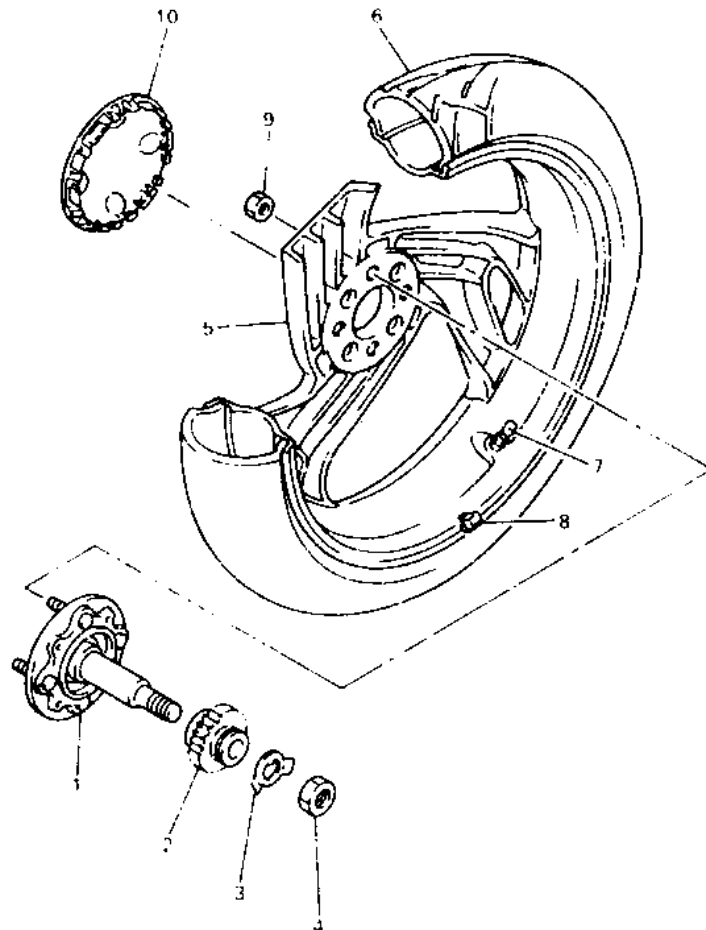


REF. NO.	PART NO.	DESCRIPTION	QTY	REMARKS
1	3GM-11351-00	GASKET, CYLINDER	1	
2	3GM-11310-00	CYLINDER	1	
3	93210-77363	O-RING	4	
4	95023-06012	BOLT	2	
5	90430-06014	GASKET	2	
6	99510-14016	PIN, DOWEL	2	
7	3GM-11181-00	GASKET, CYLINDER HEAD 1	1	



3LE332-9020

FIG. 31 FRONT WHEEL

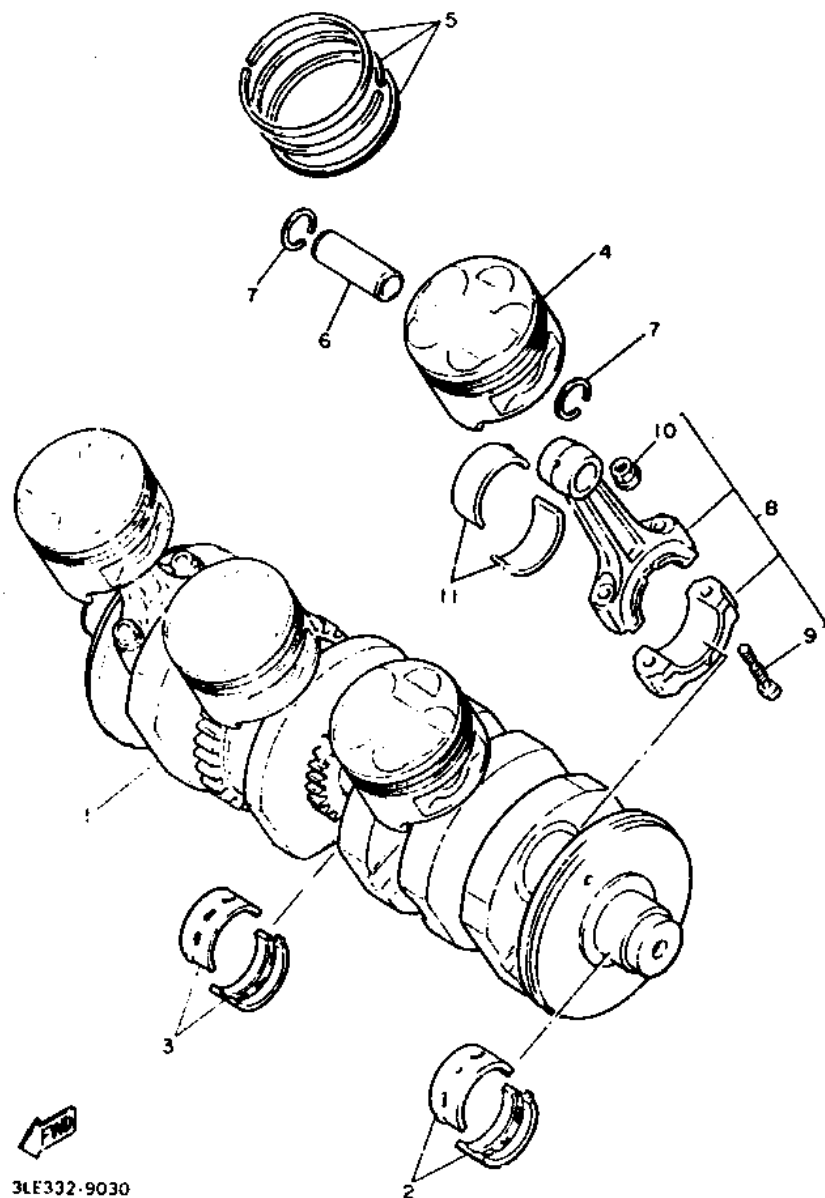


REF. NO.	PART NO.	DESCRIPTION	QTY	REMARKS
1	4BH-W2356-00	SHAFT, FRONT AXLE	1	
2	4FE-2517G-00	ROTOR, SENSOR	1	
3	4BH-25146-00	WASHER, THRUST	1	
4	90170-24373	NUT	1	
5	4BH-25160-00-P1	CAST WHEEL, FRONT	1	LIGHT YELLOWISH GRAY 1
6	94113-175Y9	TIRE (130/60 ZR17 D202F)	1	DUNLOP
7	93900-00003	VALVE, RIM	1	DUNLOP
8	4BH-25398-30	BALANCER, WHEEL (5G)	1	UN
	4BH-25398-40	BALANCER, WHEEL (10G)	1	UN
	4BH-25398-50	BALANCER, WHEEL (15G)	1	UN
	4BH-25398-60	BALANCER, WHEEL (20G)	1	UN
	4BH-25398-70	BALANCER, WHEEL (25G)	1	UN
	4BH-25398-80	BALANCER, WHEEL (30G)	1	UN
9	90179-12262	NUT	4	
10	4BH-2512A-00	CAP, WHEEL	1	

4BH332-3310

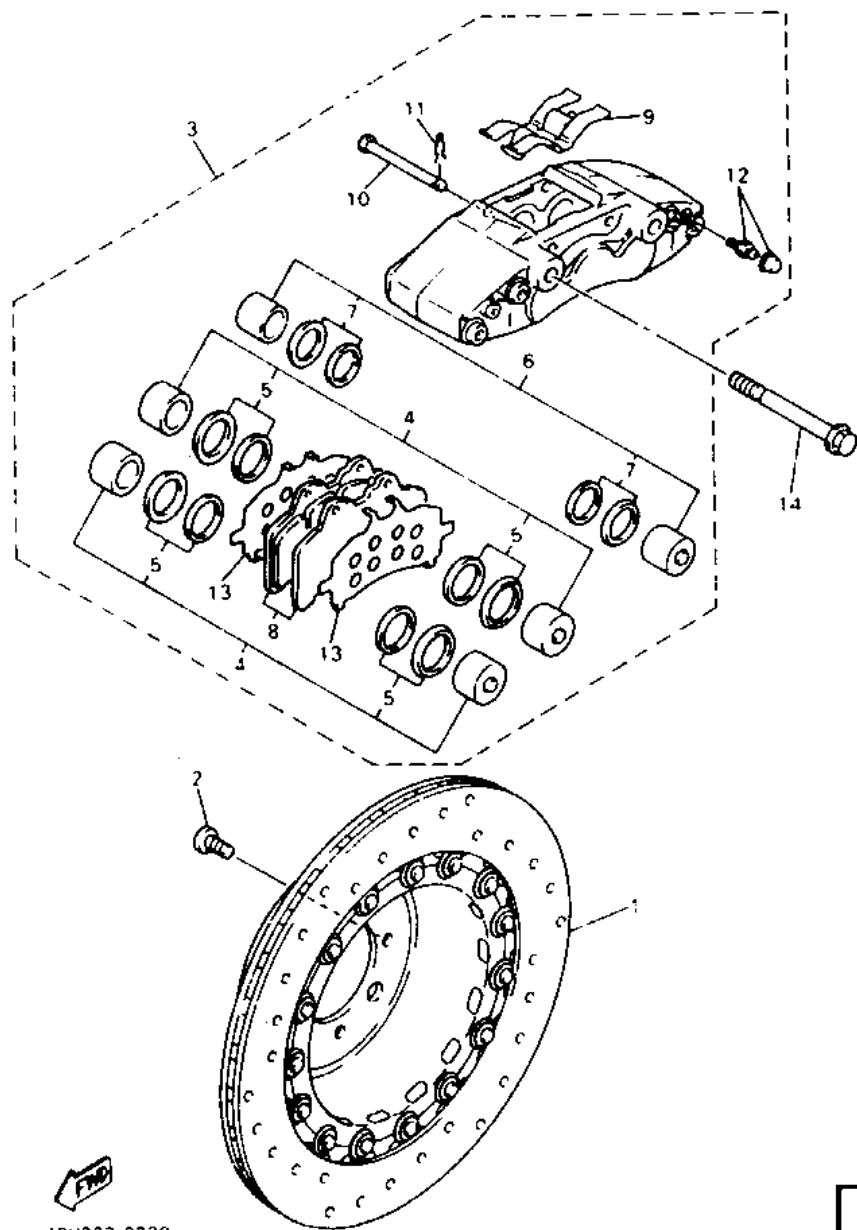
E4

FIG. 3 CRANKSHAFT • PISTON



REF. NO.	PART NO.	DESCRIPTION	Q'TY	REMARKS
1	4BH-11411-00	CRANKSHAFT	1	
2	2GH-11416-00	PLANE BEARING, CRANKSHAFT 1	8	UR BLUE
	2GH-11416-10	PLANE BEARING, CRANKSHAFT 1	8	UR BLACK
	2GH-11416-20	PLANE BEARING, CRANKSHAFT 1	8	UR BROWN
	2GH-11416-30	PLANE BEARING, CRANKSHAFT 1	8	UR GREEN
	2GH-11416-40	PLANE BEARING, CRANKSHAFT 1	8	UR YELLOW
3	3GM-11416-00	PLANE BEARING, CRANKSHAFT 1	2	UR BLUE
	3GM-11416-10	PLANE BEARING, CRANKSHAFT 1	2	UR BLACK
	3GM-11416-20	PLANE BEARING, CRANKSHAFT 1	2	UR BROWN
	3GM-11416-30	PLANE BEARING, CRANKSHAFT 1	2	UR GREEN
	3GM-11416-40	PLANE BEARING, CRANKSHAFT 1	2	UR YELLOW
4	4BH-11631-00	PISTON (STD)	4	
	4BH-11636-00	PISTON (0.50MM O/S)	4	AP
5	4BH-11603-00	PISTON RING SET (STD)	4	
	4BH-11605-00	PISTON RING SET (0.50MM O/S)	4	AP
6	3GM-11633-00	PIN, PISTON	4	
7	93450-19095	CIRCLIP	8	
8	3GM-11650-00	CONNECTING ROD ASSY	4	
9	12R-11654-00	BOLT, CONNECTING ROD	2	
10	90179-09327	NUT	2	
11	3GM-11656-00	PLANE BEARING, CONNECTING ROD	8	UR BLUE
	3GM-11656-10	PLANE BEARING, CONNECTING ROD	8	UR BLACK
	3GM-11656-20	PLANE BEARING, CONNECTING ROD	8	UR BROWN
	3GM-11656-30	PLANE BEARING, CONNECTING ROD	8	UR GREEN

FIG. 32 FRONT BRAKE CALIPER

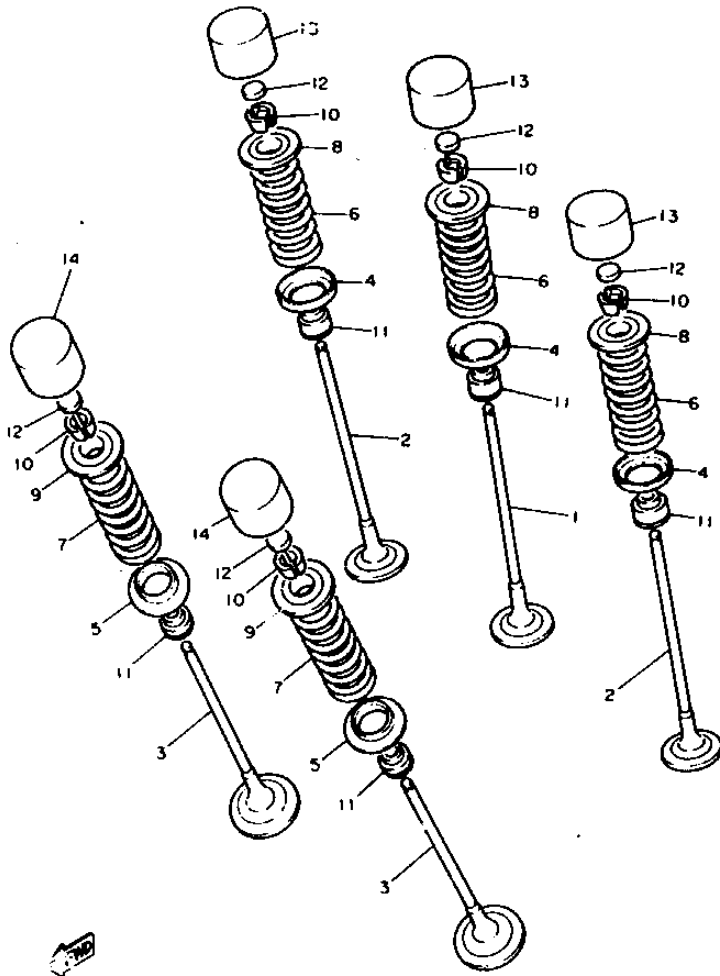


REF. NO.	PART NO.	DESCRIPTION	Q'TY	REMARKS
1	4BH-2581T-01	DISC BRAKE ASSY	1	
2	90109-08789	BOLT	4	
3	4BH-2580T-01	CALIPER ASSY (LEFT)	1	
4	4BH-W0057-00	.PISTON ASSY, CALIPER	2	
5	4BH-W0047-00	..CALIPER SEAL KIT	1	
6	4BH-W0057-10	.PISTON ASSY, CALIPER	1	
7	3GM-W0047-00	..CALIPER SEAL KIT	1	
8	4BH-W0045-01	.BRAKE PAD KIT	1	
9	4BH-25919-01	.SUPPORT, PAD	1	
10	4BH-25924-00	.PIN, PAD	2	
11	3MA-25925-00	.CLIP	2	
12	1J3-W0048-00	.BREED SCREW KIT	1	
13	4BH-25827-01	.SHIM, CALIPER	2	
14	90105-12689	BOLT, WASHER BASED	2	

4BH332-3320

E5

FIG. 4 VALVE

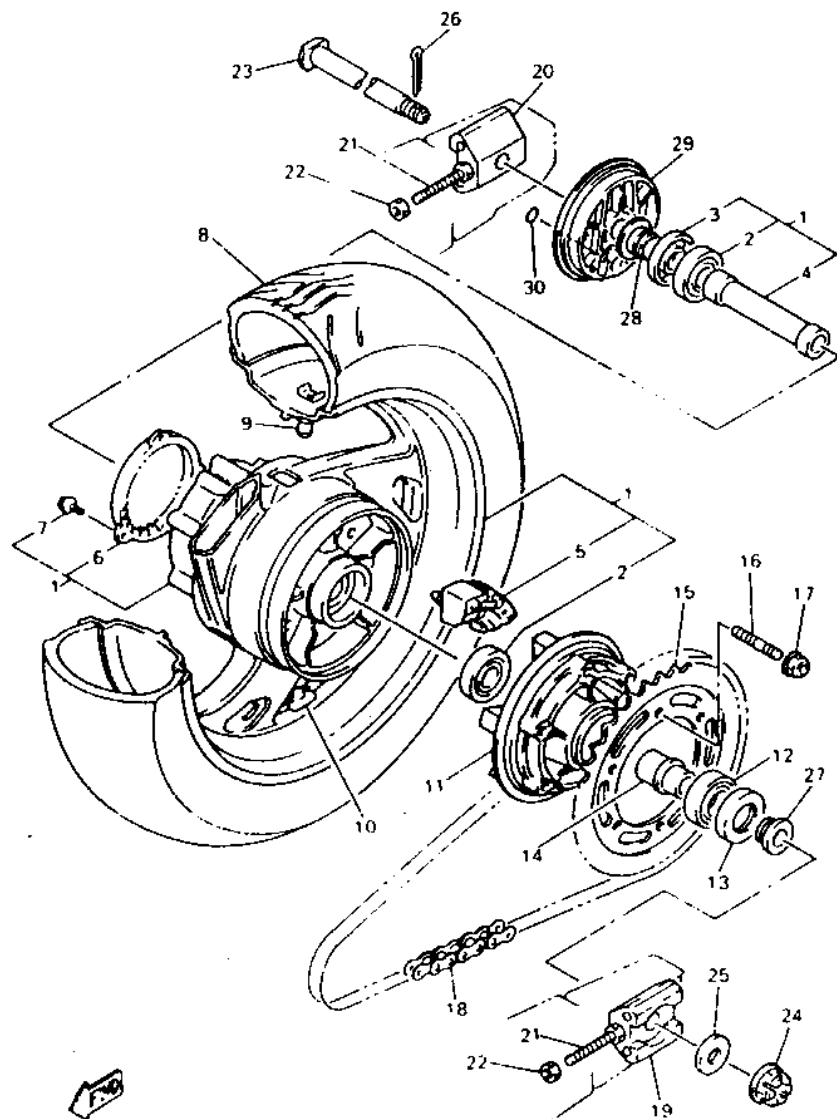


3LE332-9040

B5 **B6**

REF. NO.	PART NO.	DESCRIPTION	Q'TY	REMARKS
1	3GM-12111-00	VALVE, INTAKE	4	
2	3GM-12112-00	VALVE, INTAKE 2	8	
3	3GM-12121-00	VALVE, EXHAUST	8	
4	3GM-12116-00	SEAT, VALVE SPRING	12	
5	3GM-12126-00	SEAT, VALVE SPRING 2	8	
6	3GM-12113-00	SPRING, VALVE INNER	12	
7	4BH-12114-00	SPRING, VALVE OUTER	8	
8	3GM-12117-00	RETAINER, VALVE SPRING	12	
9	1WG-12117-00	RETAINER, VALVE SPRING	8	
10	1WG-12118-00	COTTER, VALVE	40	
11	1WG-12119-00	SEAL, VALVE STEM	20	
12	1HX-12168-00	PAD, ADJUSTING 2 (1.20)	20	UR
	1HX-12168-20	PAD, ADJUSTING 2 (1.25)	20	UR
	1HX-12168-40	PAD, ADJUSTING 2 (1.30)	20	UR
	1HX-12168-60	PAD, ADJUSTING 2 (1.35)	20	UR
	1HX-12168-80	PAD, ADJUSTING 2 (1.40)	20	UR
	1HX-12168-A0	PAD, ADJUSTING 2 (1.45)	20	UR
	1HX-12168-F0	PAD, ADJUSTING 2 (1.50)	20	UR
	1HX-12168-H1	PAD, ADJUSTING 2 (1.55)	20	UR
	1HX-12168-K1	PAD, ADJUSTING 2 (1.60)	20	UR
	1HX-12168-M1	PAD, ADJUSTING 2 (1.65)	20	UR
	1HX-12168-R1	PAD, ADJUSTING 2 (1.70)	20	UR
	1HX-12168-U1	PAD, ADJUSTING 2 (1.75)	20	UR
	1HX-12168-W1	PAD, ADJUSTING 2 (1.80)	20	UR
	1HX-12168-Y1	PAD, ADJUSTING 2 (1.85)	20	UR
	1HX-12169-11	PAD, ADJUSTING 2 (1.90)	20	UR
	1HX-12169-31	PAD, ADJUSTING 2 (1.95)	20	UR
	1HX-12169-50	PAD, ADJUSTING 2 (2.00)	20	UR
12	1HX-12169-70	PAD, ADJUSTING 2 (2.05)	20	UR
	1HX-12169-90	PAD, ADJUSTING 2 (2.10)	20	UR
	1HX-12169-E0	PAD, ADJUSTING 2 (2.15)	20	UR
	1HX-12169-G0	PAD, ADJUSTING 2 (2.20)	20	UR
	1HX-12169-J0	PAD, ADJUSTING 2 (2.25)	20	UR
	1HX-12169-L0	PAD, ADJUSTING 2 (2.30)	20	UR
	1HX-12169-N0	PAD, ADJUSTING 2 (2.35)	20	UR
	1HX-12169-T0	PAD, ADJUSTING 2 (2.40)	20	UR
13	2NK-12153-02	LIFTER, VALVE	12	UR BLACK
	2NK-12153-09	LIFTER, VALVE (O/S)	12	UR WHITE
14	1WG-12153-21	LIFTER, VALVE	8	UR BLUE
	1WG-12153-09	LIFTER, VALVE (O/S)	8	UR WHITE

FIG. 33 REAR WHEEL



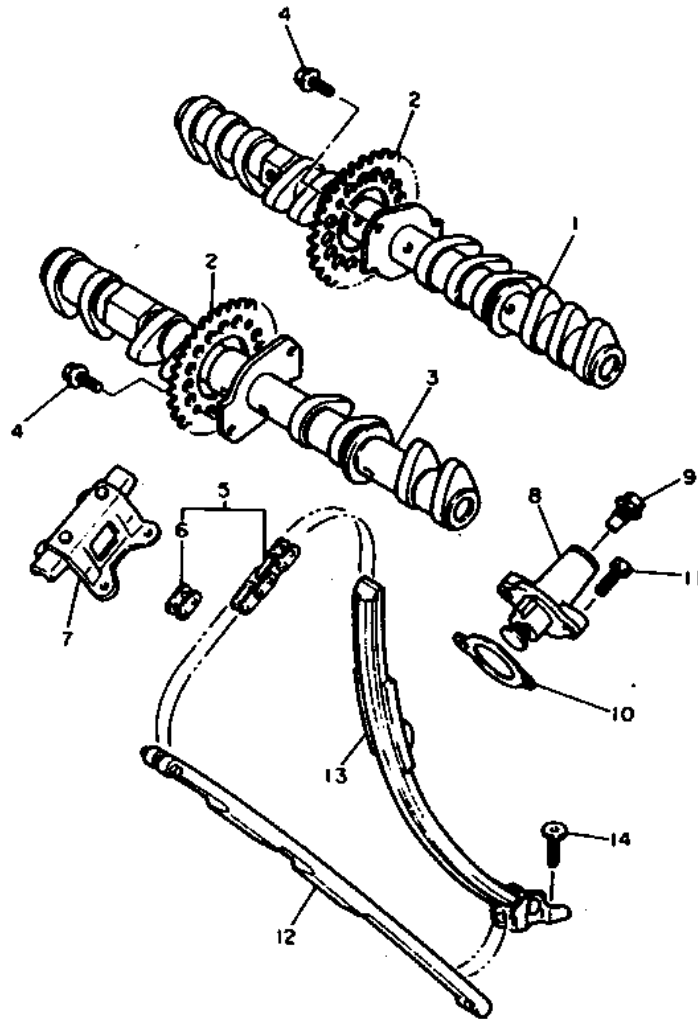
4FF309-3330

E6

E7

REF. NO.	PART NO.	DESCRIPTION	Q'TY	REMARKS
1	4FE-25370-00-P0	CAST WHEEL, REAR	1	LIGHT YELLOWISH GRAY 1
2	93306-30437	.BEARING	2	
3	93106-30029	.OIL SEAL	1	
4	90560-20386	.SPACER	1	
5	2GH-25364-00	.DAMPER	5	
6	3YA-2517G-00	.ROTOR, SENSOR	1	
7	90159-05155	.SCREW, WITH WASHER	3	
8	94117-176Y0	TIRE (170/60 ZR17 D202)	1	DUNLOP
9	93900-00030	VALVE, RIM	1	
10	29L-25398-00	BALANCER, WHEEL (10G)	1	UN
	29L-25398-10	BALANCER, WHEEL (20G)	1	UN
	29L-25398-20	BALANCER, WHEEL (30G)	1	UN
11	36Y-25366-01	CLUTCH, HUB	1	
12	93306-30562	BEARING	1	
13	93106-35030	OIL SEAL	1	
14	36Y-25377-00	COLLAR, WHEEL	1	
15	2GH-25447-21	SPROCKET, DRIVEN (47T)	1	
16	90116-10485	BOLT, STUD	6	
17	95601-10200	NUT, SELF-LOCKING	6	
18	94581-57118	CHAIN (DID532ZLVKA1-118L)	1	UR DAIDO
	94571-31118	CHAIN (RK532GSV2-118L)	1	UR TAKASAGO
19	3GM-25388-00	PULLER, CHAIN 1	1	
20	3GM-25389-00	PULLER, CHAIN 2	1	
21	90101-08705	BOLT	2	
22	95333-08600	NUT	2	
23	3GM-25381-00	AXLE, WHEEL	1	
24	90171-18051	NUT, CASTLE	1	
25	90201-18264	WASHER, PLATE	1	
26	91401-40040	PIN, COTTER	1	
27	90387-203X0	COLLAR	1	
28	90387-202X9	COLLAR	1	
29	4FE-2537A-00-P0	HOUSING, SENSOR REAR	1	LIGHT YELLOWISH GRAY 1
30	93210-18397	O-RING	2	

FIG. 5 CAMSHAFT • CHAIN



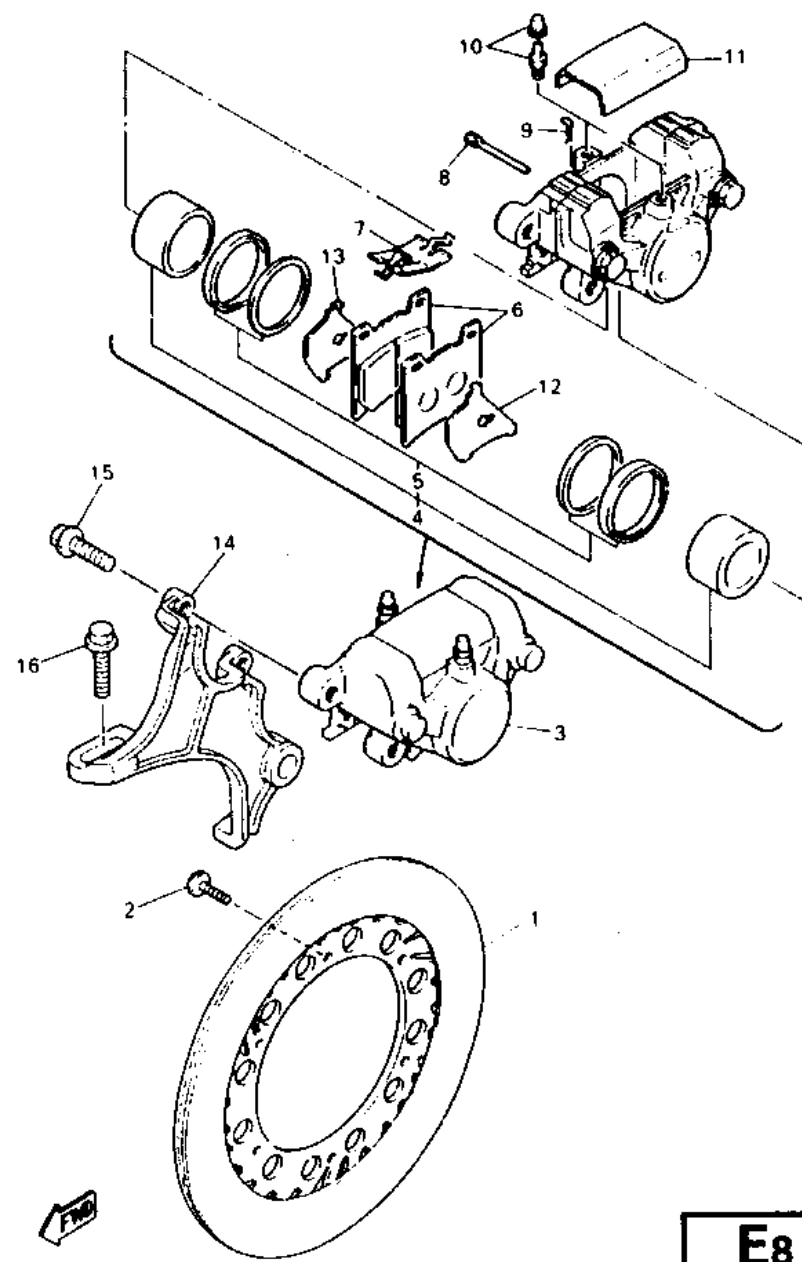
REF. NO.	PART NO.	DESCRIPTION	QTY	REMARKS
1	4BH-12171-00	CAMSHAFT 1	1	
2	3GM-12176-00	SPROCKET, CAM CHAIN	2	
3	4BH-12181-00	CAMSHAFT 2	1	
4	90105-07342	BOLT, WASHER BASED	4	
5	94581-01178	CHAIN (D1D219FS-108L)	1	
6	94681-01021	JOINT, CHAIN	1	
7	2GH-12241-00	GUIDE, STOPPER 2	1	
8	4BH-12210-00	TENSIONER ASSY, CAM CHAIN	1	
9	90109-112F1	BOLT	1	
10	4BE-12213-00	GASKET, TENSIONER CASE	1	
11	95023-06025	BOLT	2	
12	3GM-12251-00	DAMPER, CHAIN 1	1	
13	3GM-12252-00	DAMPER, CHAIN 2	1	
14	90109-065A8	BOLT	2	



3LE332-9050

B7

FIG. 34 REAR BRAKE CALIPER

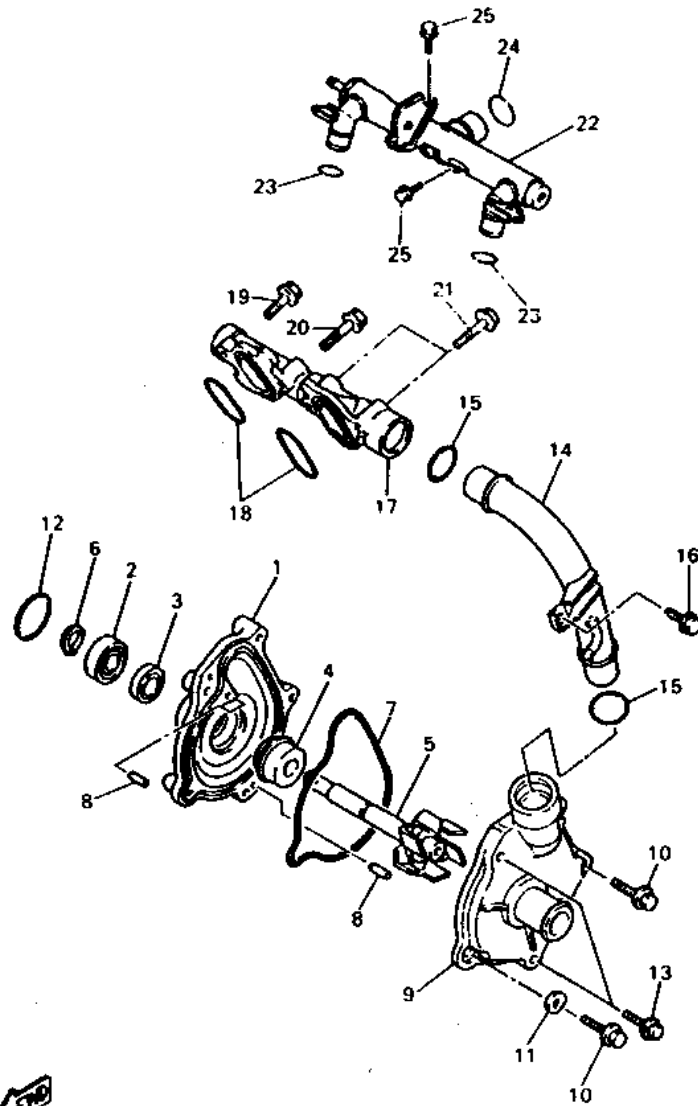


4BH332-3340

E8

REF. NO.	PART NO.	DESCRIPTION	QTY	REMARKS
1	4BH-2582W-00	DISC, REAR BRAKE 2	1	
2	90109-08718	BOLT	6	
3	4BH-2580W-00	CALIPER ASSY, REAR 2	1	
4	31A-W0057-00	.PISTON ASSY, CALIPER	1	
5	31A-W0047-00	..CALIPER SEAL KIT	1	
6	1FK-W0046-01	..BRAKE PAD KIT 2	1	
7	26H-25919-00	..SUPPORT, PAD	1	
8	3HE-25924-00	..PIN, PAD	2	
9	3HE-25925-00	..CLIP	2	
10	1J3-W0048-00	..BREED SCREW KIT	2	
11	41Y-25836-00	..COVER, DUST	1	
12	1FK-25827-00	..SHIM, CALIPER	1	
13	1FK-25828-00	..SHIM, CALIPER	1	
14	4BH-25819-00	BRACKET, CALIPER	1	
15	90105-10638	BOLT, WASHER BASED	2	
16	95811-10030	BOLT, FLANGE	1	

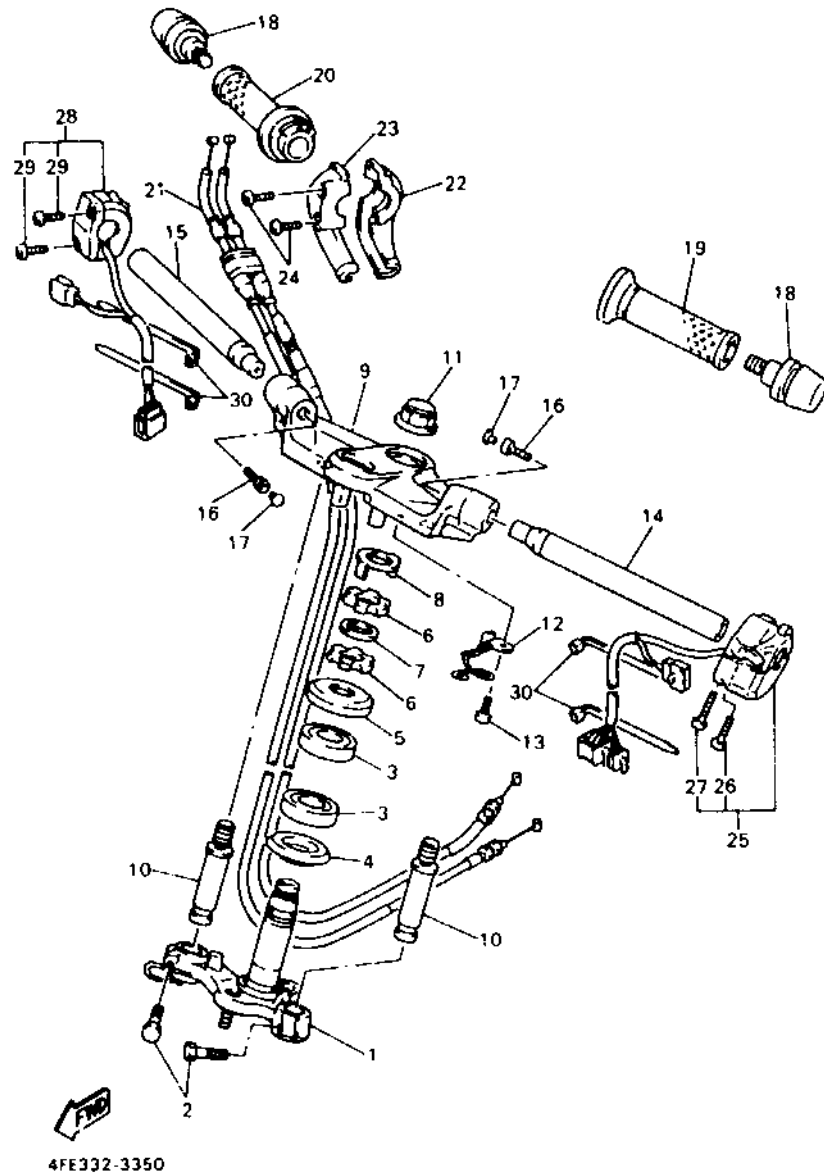
FIG. 6 WATER PUMP



49H332-3060

REF. NO.	PART NO.	DESCRIPTION	QTY	REMARKS
1	1UF-12421-09	HOUSING, WATER PUMP	1	
2	93306-00106	BEARING	1	
3	93101-12060	OIL SEAL	1	
4	11H-12438-00	SEAL, MECHANICAL	1	
5	1UF-12450-00	IMPELLER SHAFT ASSY	1	
6	99009-12400	CIRCLIP	1	
7	1AE-12439-00	O-RING	1	
8	93604-10011	PIN, DOWEL	2	
9	4BH-12422-00	COVER, HOUSING	1	
10	95023-08025	BOLT	3	
11	90430-06014	GASKET	1	
12	93210-33133	O-RING	1	
13	96021-06050	BOLT, FLANGE	2	
14	4BH-12481-00	PIPE 1	1	
15	93210-23787	O-RING	2	
16	95023-08012	BOLT	1	
17	3DX-12469-00	JOINT 1	1	
18	93210-30694	O-RING	2	
19	95023-06020	BOLT	1	
20	95023-08030	BOLT	1	
21	95023-06040	BOLT	2	
22	4BH-12482-00	PIPE 2	1	
23	93210-15417	O-RING	2	
24	93210-23787	O-RING	1	
25	95023-06010	BOLT	2	

FIG. 35 STEERING HANDLE • CABLE

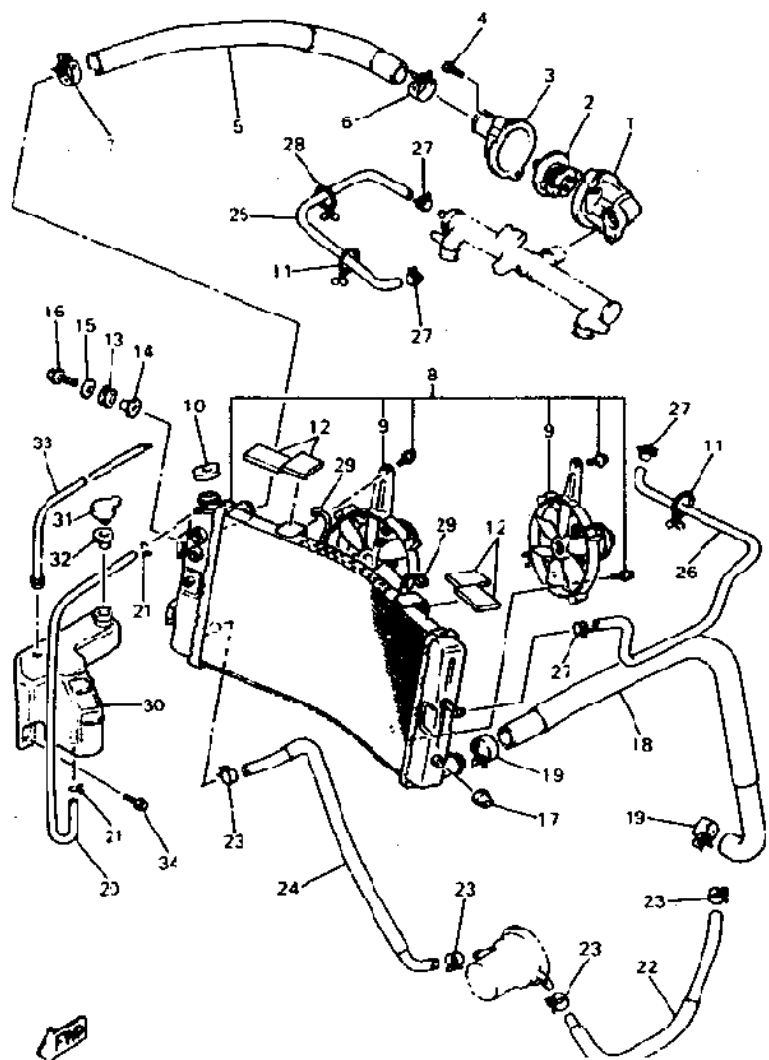


REF. NO.	PART NO.	DESCRIPTION	Q'TY	REMARKS
1	4BH-23340-00	UNDER BRACKET COMP	1	
2	90101-06757	BOLT	2	
3	93399-99937	BEARING	2	
4	164-23462-00	SEAL, STEERING	1	
5	3HE-23416-00	COVER, BALL RACE 2	1	
6	90179-25615	NUT	2	
7	90202-26142	WASHER, PLATE	1	
8	3YF-23418-00	WASHER, SPECIAL	1	
9	4BH-23435-00-P1	CROWN, HANDLE	1	LIGHT YELLOWISH GRAY 1
10	4BH-2612F-00	BOSS	2	
11	90176-22050	NUT, CROWN	1	
12	4BH-26131-00	GUIDE, CABLE 1	1	
13	98906-06008	SCREW, BIND	1	
14	4BH-26111-00	HANDLEBAR	1	
15	4BH-26112-00	BAR, HANDLE	1	
16	91316-08025	BOLT	2	
17	341-23469-00	CAP, BOLT	2	
18	4BH-26246-00	END, GRIP	2	
19	1KG-26241-00	GRIP (LEFT)	1	
20	3FH-26240-00	GRIP ASSY	1	
21	4BH-28302-00	THROTTLE CABLE ASSY	1	
22	3XW-26281-01	CAP, GRIP UPPER	1	
23	3XW-26282-01	CAP, GRIP LOWER	1	
24	98506-05035	SCREW, PAN HEAD	2	
25	4HH-83973-00	SWITCH, HANDLE 3	1	
26	98506-05030	„SCREW, PAN HEAD	1	
27	98506-05040	„SCREW, PAN HEAD	1	
28	4FE-83975-00	SWITCH, HANDLE 2	1	
29	90157-05057	„SCREW, PAN HEAD	2	
30	90464-13073	CLAMP	4	

E9

E10

FIG. 7 RADIATOR • HOSE



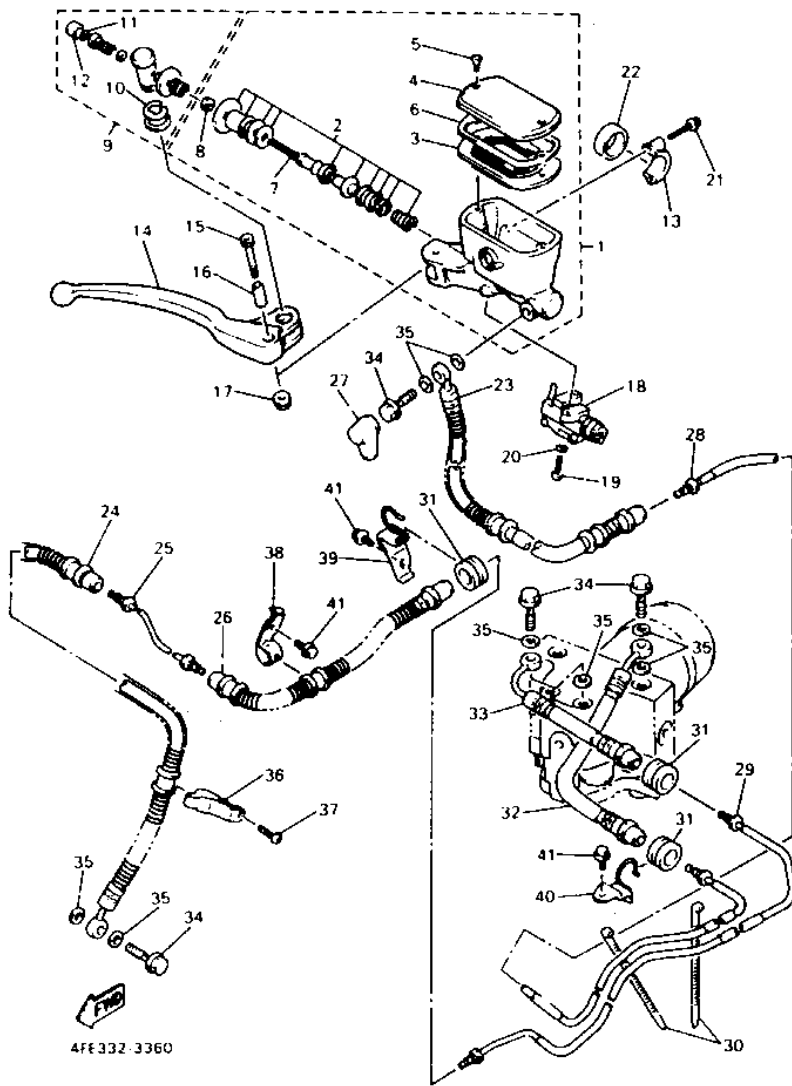
48H132-3070

REF. NO.	PART NO.	DESCRIPTION	QTY	REMARKS
1	3GM-12417-00	HOUSING, THERMOSTAT	1	
2	3GM-12410-00	THERMOSTAT ASSY	1	
3	3GM-12413-00	COVER, THERMOSTAT	1	
4	95023-06025	BOLT	2	
5	48H-12576-00	HOSE 1	1	
6	90467-33143	CLIP	1	
7	90467-28142	CLIP	1	
8	48H-1240A-00	RADIATOR ASSY	1	
9	48H-12405-00	BLOWER ASSY	2	
10	22W-12462-00	CAP, RADIATOR	1	
11	90464-18116	CLAMP	2	
12	38B-22261-00	DAMPER, SUB TANK	4	
13	90480-18276	GROMMET	2	
14	90387-07037	COLLAR	2	
15	90201-063J2	WASHER, PLATE	2	
16	95826-06020	BOLT, FLANGE	2	
17	90480-20566	GROMMET	2	
18	48H-12577-00	HOSE 2	1	
19	90467-28142	CLIP	2	
20	90445-09115	HOSE	1	
21	90467-08003	CLIP	2	
22	48H-12588-00	HOSE 5	1	
23	90467-15141	CLIP	4	
24	48H-12589-00	HOSE 6	1	
25	48H-12578-00	HOSE 3	1	
26	48H-12579-00	HOSE 4	1	
27	90467-11139	CLIP	4	
28	90464-23041	CLAMP	1	
29	90464-13073	CLAMP	2	
30	48H-21871-00	TANK, RECOVERY	1	
31	4LO-21875-00	CAP	1	
32	1AA-21874-00	GASKET	1	
33	48H-21877-00	PIPE, OVERFLOW	1	
34	90119-06192	BOLT, WITH WASHER	2	

B9

B10

FIG. 36 FRONT MASTER CYLINDER

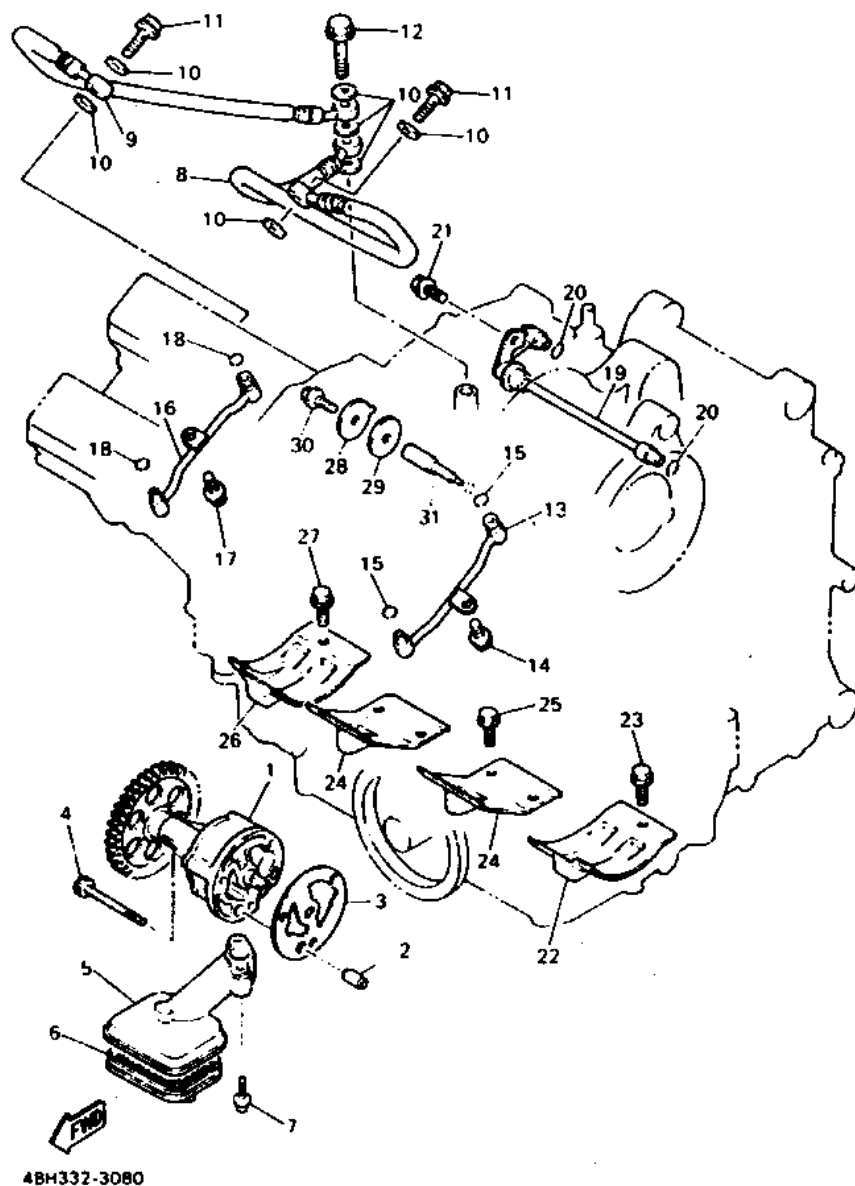


REF. NO.	PART NO.	DESCRIPTION	Q'TY
1	4BH-W2587-00	MASTER CYLINDER SUB ASSY	1
2	4BH-W0041-00	.CYLINDER KIT, MASTER	1
3	4BH-25854-00	.DIAPHRAGM, RESERVOIR	1
4	4BH-25852-00	.CAP, RESERVOIR	1
5	98706-04012	.SCREW, FLAT HEAD	2
6	4BH-25815-00	.SEAL, PISTON	1
7	3YX-25880-00	.PUSH ROD COMP.	1
8	95380-06600	.NUT	1
9	3YX-W0091-02	SCREW KIT, MASTERCYLINDER	1
10	3YX-25866-00	.CIRCLIP	1
11	3YX-25866-10	.CIRCLIP	1
12	3YX-2583H-00	.BOOT	1
13	56A-25867-00	BRACKET, MASTER CYLINDER	1
14	3YX-83922-09	LEVER 2	1
15	3YX-2589F-00	BOLT, LEVER	1
16	3YX-25838-00	SLEEVE, CALIPER	1
17	95616-06100	NUT, U	1
18	4FE-83980-00	FRONT STOP SWITCH ASSY	1
19	98506-04012	SCREW, PAN HEAD	2
20	92906-04600	WASHER, PLATE	2
21	95026-06025	BOLT, FLANGE	2
22	90387-22660	COLLAR	1
23	4FE-25872-00	HOSE, BRAKE 1	1
24	4FE-25873-00	HOSE, BRAKE 2	1
25	4FE-25871-00	PIPE, BRAKE	1
26	4FE-2581K-00	HOSE, BRAKE 5	1
27	4L0-25862-00	BOOT, MASTER CYLINDER	2
28	4FE-25882-00	PIPE, BRAKE 2	1
29	4FE-25883-00	PIPE, BRAKE 3	1
30	90465-13169	CLAMP	2
31	341-25881-00	PROTECTOR, BRAKE HOSE	3
32	4FE-25874-00	HOSE, BRAKE	1
33	4FE-2581J-00	HOSE, BRAKE 4	1
34	90401-10096	BOLT, UNION	4
35	90201-10118	WASHER, PLATE	8
36	4BH-25875-00	HOLDER, BRAKE HOSE 1	1
37	92011-06016	BOLT, BUTTON HEAD	1
38	4BH-25887-00	HOLDER, BRAKE HOSE	1
39	4BH-2587A-00	HOLDER, BREAK HOSE	1
40	4FE-2587A-00	HOLDER, BREAK HOSE	1
41	95811-06012	BOLT, FLANGE	3

E11

E12

FIG. 8 OIL PUMP

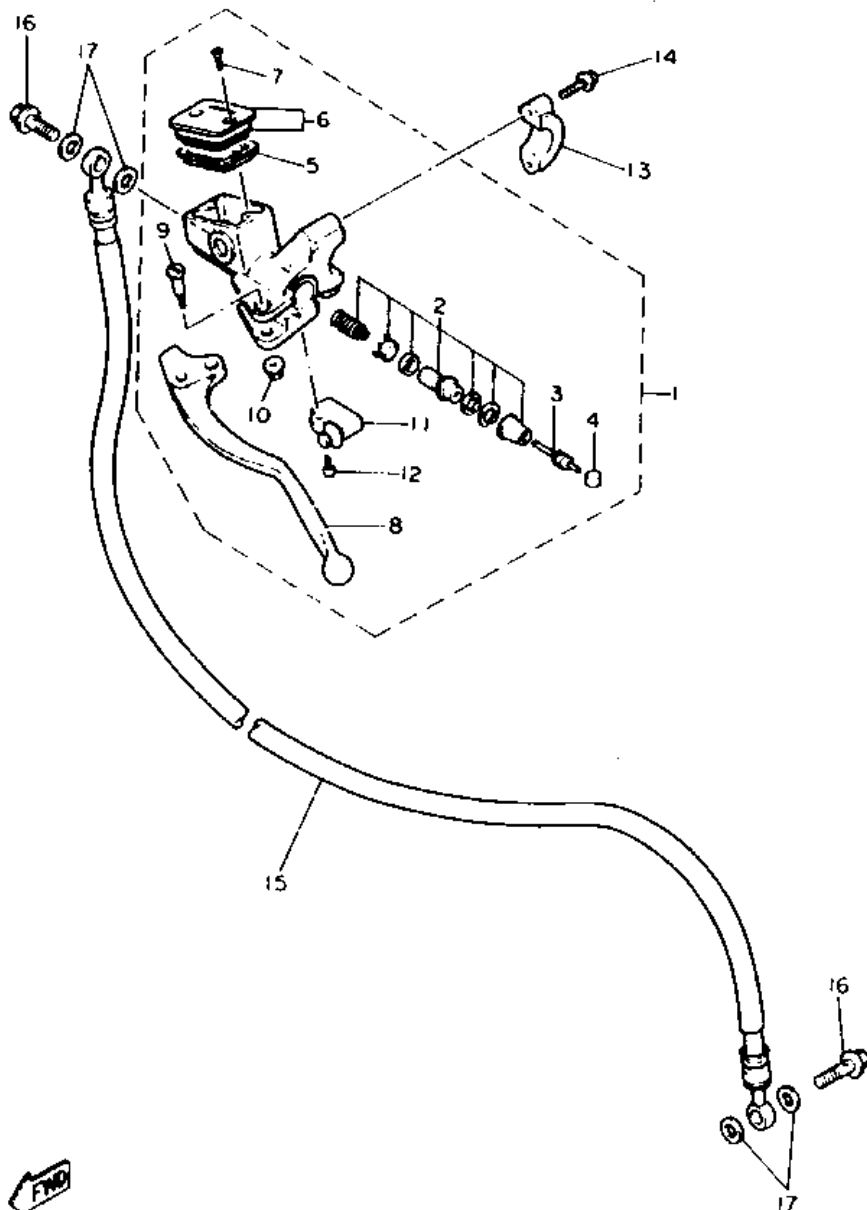


REF. NO.	PART NO.	DESCRIPTION	QTY	REMARKS
1	1AE-13300-00	OIL PUMP ASSY	1	
2	99510-08012	PIN, DOWEL	1	
3	2GH-13329-00	GASKET, PUMP COVER	1	
4	91316-06050	BOLT	3	
5	4BH-13412-00	HOUSING, STRAINER	1	
6	4BH-13411-00	STRAINER, OIL	1	
7	95028-06030	BOLT, FLANGE	2	
8	4BH-1316F-00	HOSE, OIL 1	1	
9	4BH-1316G-00	HOSE, OIL 2	1	
10	90430-10171	GASKET	7	
11	90401-10096	BOLT, UNION	2	
12	90401-10044	BOLT, UNION	1	
13	3GM-13181-00	PIPE, DELIVERY 3	1	
14	95028-06012	BOLT, FLANGE	1	
15	93210-06632	O-RING	2	
16	3GM-13191-00	PIPE, DELIVERY 4	1	
17	95028-06012	BOLT, FLANGE	1	
18	93210-06632	O-RING	2	
19	2GH-1316E-00	PIPE, DELEVERY 5	1	
20	93210-07135	O-RING	2	
21	95028-06012	BOLT, FLANGE	1	
22	2GH-15123-00	PLATE, BUFFLE 1	1	
23	95028-06012	BOLT, FLANGE	2	
24	1AE-15124-00	PLATE, BUFFLE 2	2	
25	95028-06012	BOLT, FLANGE	6	
26	2GH-15133-00	PLATE, BUFFLE 3	1	
27	95028-06012	BOLT, FLANGE	2	
28	90201-061M7	WASHER, PLATE	1	
29	4BH-13475-00	GASKET	1	
30	95811-06016	BOLT, FLANGE	1	
31	3GM-13454-00	NOZZLE	1	

B11

B12

FIG. 37 FRONT MASTER CYLINDER 2



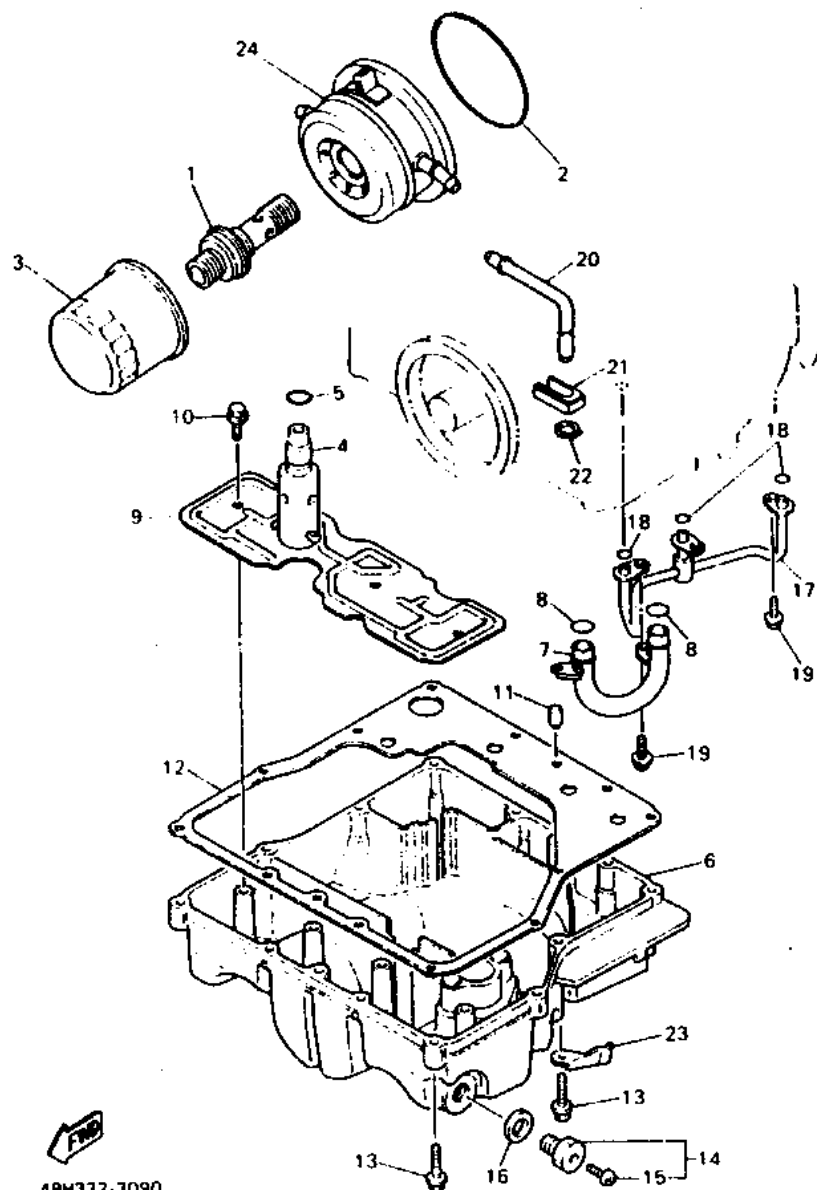
REF. NO.	PART NO.	DESCRIPTION	QTY
1	3SD-25870-11	MASTER CYLINDER SUB ASSY	1
2	3GM-W0099-00	.CYLINDER KIT, MASTER (CLUTCH)	1
3	3GM-26464-00	.ROD, PUSH	1
4	3GM-26455-00	.BUSH	1
5	55U-25854-00	.DIAPHRAGM, RESERVOIR	1
6	3GM-W2585-20	.RESERVOIR CAP SET	1
7	98706-04012	.SCREW, FLAT HEAD	2
8	3GM-83912-00	.LEVER 1	1
9	90149-06287	.SCREW	1
10	95706-06500	.NUT, FLANGE	1
11	3GM-83980-00	.FRONT STOP SWITCH ASSY	1
12	98706-04016	.SCREW, FLAT HEAD	1
13	56A-25867-00	BRACKET, MASTER CYLINDER	1
14	95026-06025	BOLT, FLANGE	2
15	4BH-26470-00	HOSE, CLUTCH	1
16	90401-10096	BOLT, UNION	2
17	90201-10118	WASHER, PLATE	4



3LE332-1360

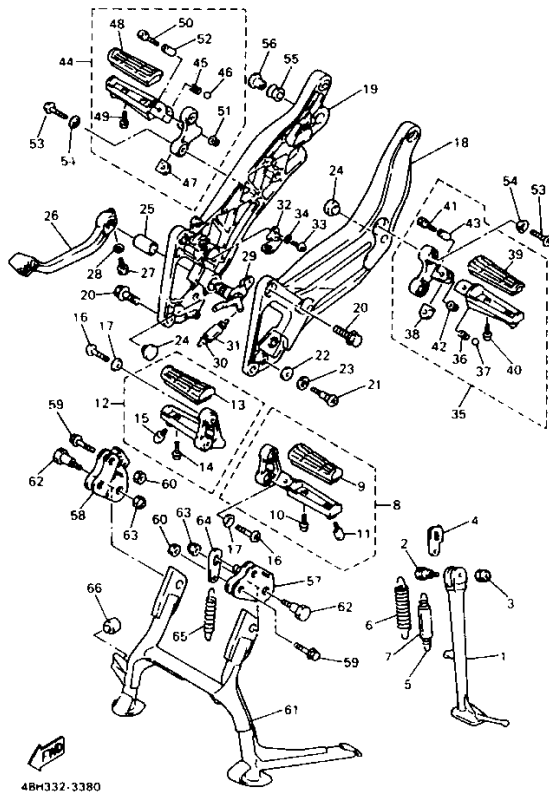
E13

FIG. 9 OIL CLEANER



REF. NO.	PART NO.	DESCRIPTION	Q'TY	REMARKS
1	3TJ-13340-00	BY-PASS VALVE ASSY	1	
2	93210-87723	O-RING	1	
3	3FV-13440-00	ELEMENT ASSY, OIL CLEANER	1	
4	3KS-13490-00	RELIEF VALVE ASSY	1	
5	93210-15566	O-RING	1	
6	4BH-13417-00	COVER, STRAINER	1	
7	3FV-13416-01	PIPE, OIL 1	1	
8	93210-14579	O-RING	2	
9	3GM-13337-00	PLATE, BAFFLE LOWER	1	
10	95026-06010	BOLT, FLANGE	4	
11	99510-08016	PIN, DOWEL	2	
12	4BH-13414-00	GASKET, STRAINER COVER	1	
13	95023-06030	BOLT	12	
14	3VD-13455-00	PLUG	1	
15	98901-06008	SCREW, BIND	1	
16	214-11198-01	GASKET	1	
17	3GM-13161-01	PIPE, DELIVERY 1	1	
18	93210-06714	O-RING	3	
19	95026-06012	BOLT, FLANGE	3	
20	3GM-15373-00	PIPE, BREATHER	1	
21	3GM-13174-00	HOLDER, OIL PIPE	1	
22	99009-10400	CIRCLIP	1	
23	90435-08076	CLAMP	1	
24	4BH-13470-00	OIL COOLER ASSY	1	

FIG. 38 STAND • FOOTREST



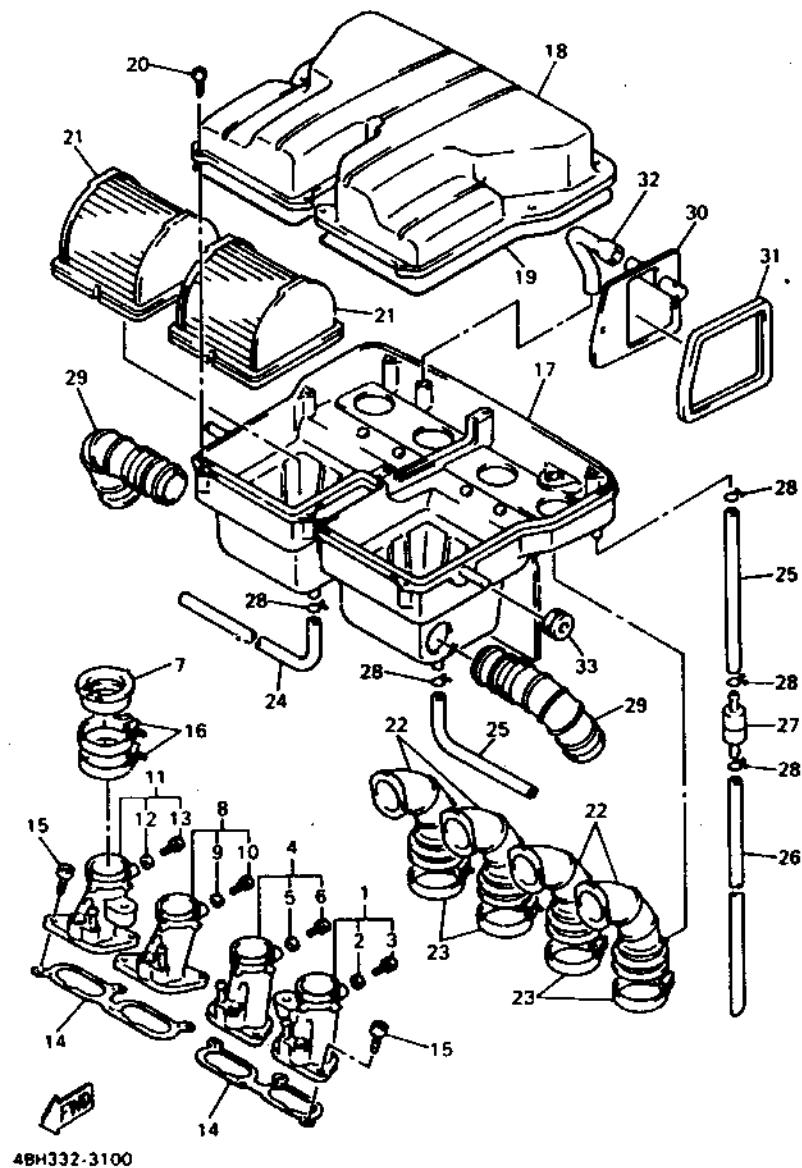
REF. NO.	PART NO.	DESCRIPTION	QTY	REMARKS
1	48H-27311-00	STAND, SIDE	1	
2	90109-107F8	BOLT	1	
3	90185-10037	NUT, SELF-LOCKING	1	
4	2KT-27315-00	LINK, SIDE STAND	1	
5	90506-18224	SPRING, TENSION	1	
6	90506-26225	SPRING, TENSION	1	
7	1TX-27351-00	GUIDE, SIDE STAND	1	
8	48H-27410-00	FRONT FOOTREST ASSY (LEFT)	1	
9	3YX-27413-00	.COVER, FOOTREST	1	
10	90159-05122	.SCREW, WITH WASHER	2	
11	3HE-27435-00	.BOLT	1	
12	48H-27420-00	FRONT FOOTREST ASSY (RIGHT)	1	
13	3YX-27413-00	.COVER, FOOTREST	1	
14	90159-05122	.SCREW, WITH WASHER	2	
15	3HE-27435-00	.BOLT	1	
16	90110-08071	BOLT, HEXAGON SOCKET HEAD	4	
17	90209-08295	WASHER	4	
18	48H-27442-00-P1	BRACKET 2	1	LIGHT YELLOWISH GRAY 1
19	48H-27443-00-P1	BRACKET 3	1	LIGHT YELLOWISH GRAY 1
20	90105-10678	BOLT, WASHER BASED	4	
21	4BP-27434-01	BOLT	1	
22	90201-08326	WASHER, PLATE	1	
23	90201-127J6	WASHER, PLATE	1	
24	128-27114-00	STOPPER, MAIN STAND	4	
25	90380-20213	BUSH, SOLID	1	
26	48H-27211-00	PEDAL, BRAKE	1	
27	90109-06468	BOLT	1	
28	90395-06100	WASHER	1	
29	48H-27212-00	SHAFT, BRAKE PEDAL	1	
30	90506-20192	SPRING, TENSION	1	
31	90446-14359	HOSE	1	
32	48H-2741L-00	BRACKET 4	1	
33	98580-05012	SCREW, PAN HEAD	1	
34	92901-05100	WASHER, SPRING	1	
35	48H-27430-00	REAR FOOTREST ASSY 1	1	
36	90501-12743	.SPRING, COMPRESSION	1	
37	93501-04011	.BALL	1	
38	1HX-27437-00	.WASHER, SPECIAL	1	
39	3YX-27413-00	.COVER, FOOTREST	1	
40	90159-05122	.SCREW, WITH WASHER	2	
41	91311-06035	.BOLT	1	
42	95601-06100	.NUT, U	1	
43	90387-064H8	.COLLAR	1	
44	48H-27440-00	REAR FOOTREST ASSY 2	1	
45	90501-12743	.SPRING, COMPRESSION	1	
46	93501-04011	.BALL	1	
47	1HX-27437-00	.WASHER, SPECIAL	1	
48	3YX-27413-00	.COVER, FOOTREST	1	
49	90159-05122	.SCREW, WITH WASHER	2	
50	91311-06035	.BOLT	1	
51	95601-06100	.NUT, U	1	
52	90387-064H8	.COLLAR	1	
53	90110-08071	BOLT, HEXAGON SOCKET HEAD	4	
54	90209-08295	WASHER	4	
55	2H7-27414-00	DAMPER, FOOTREST	1	
56	90387-10636	COLLAR	1	
57	48H-27151-00	BRACKET, MAIN STAND	1	
58	48H-27152-00	BRACKET, MAIN STAND 2	1	
59	90105-10188	BOLT, WASHER BASED	4	
60	90179-10247	NUT	4	
61	48H-27111-00	STAND, MAIN	1	
62	90109-100E6	BOLT	2	
63	90185-10091	NUT, SELF-LOCKING	2	
64	48H-27115-00	LINK, MAIN STAND	1	
65	90506-45278	SPRING, TENSION	1	
66	2GM-27114-00	STOPPER, MAIN STAND	1	

E14

E15

F2

FIG. 10 INTAKE

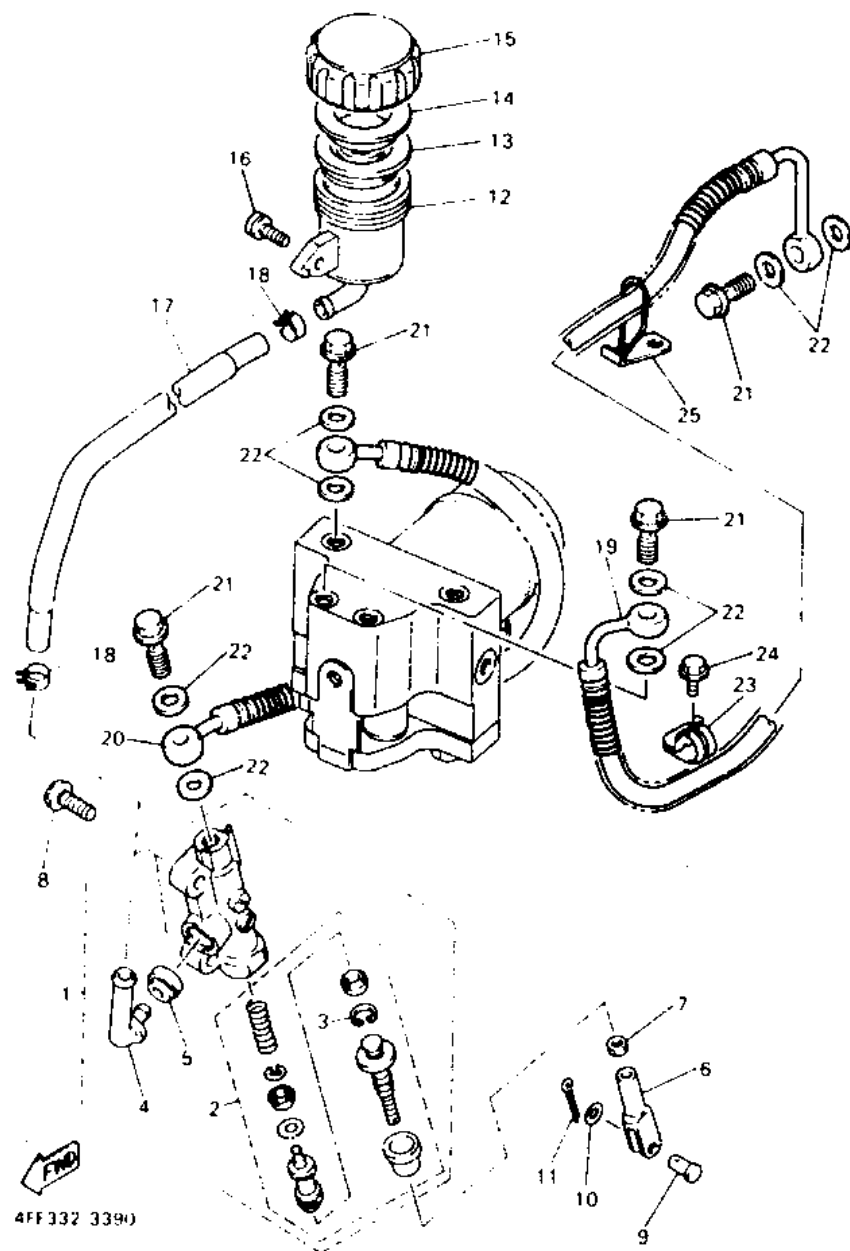


REF. NO.	PART NO.	DESCRIPTION	QTY	REMARKS
1	4BH-13586-00	JOINT, CARBURETOR 1	1	
2	90430-06014	.GASKET	1	
3	91312-06012	.BOLT	1	
4	4BH-13596-00	JOINT, CARBURETOR 2	1	
5	90430-06014	.GASKET	1	
6	91312-06012	.BOLT	1	
7	2LM-13597-00	JOINT, CARBURETOR 3	4	
8	4BH-13597-00	JOINT, CARBURETOR 3	1	
9	90430-06014	.GASKET	1	
10	91312-06012	.BOLT	1	
11	4BH-13598-00	JOINT, CARBURETOR 4	1	
12	90430-06014	.GASKET	1	
13	91312-06012	.BOLT	1	
14	4BH-13556-00	GASKET, MANIFOLD	2	
15	91311-06020	BOLT	8	
16	1AE-13575-00	BAND	8	
17	4BH-W1441-00	AIR CLEANER CASE COMP.	1	
18	4BH-14421-00	CASE, AIR CLEANER 2	1	
19	4BH-14457-00	SEAL	1	
20	97780-50125	SCREW, TAPPING	10	
21	4BH-14451-00	ELEMENT, AIR CLEANER	2	
22	4BH-14453-00	JOINT, AIR CLEANER 1	4	
23	90450-49020	HOSE CLAMP ASSY	4	
24	4BH-14987-00	HOSE	1	
25	90445-11293	HOSE	2	
26	90445-075G7	HOSE	1	
27	4X7-2149Y-00	FILTER ASSY	1	
28	90467-10008	CLIP	5	
29	4BH-14437-00	DUCT	2	
30	4BH-14432-00	SILENSER, INNER	1	
31	4BH-14452-00	SEAL	1	
32	4BH-14465-00	PIPE	1	
33	90480-18499	GROMMET	1	

B14

B15

FIG. 39 REAR MASTER CYLINDER



REF NO.	PART NO.	DESCRIPTION	Q'TY	REMARKS
1	4BH-2583V-00	RR MASTER CYLINDER ASSY.	1	
2	4BH-W0042-50	.CYLINDER KIT, MASTER	1	
3	3LN-2585G-00	..CIRCLIP	1	
4	4BP-2582A-00	.JOINT	1	
5	4BP-2585F-00	.BUSH	1	
6	31A-27222-00	JOINT	1	
7	95303-08700	NUT	1	
8	90150-08034	SCREW, ROUND HEAD	2	
9	90240-08013	PIN, CLEVIS	1	
10	90201-08083	WASHER, PLATE	1	
11	91490-20020	PIN, COTTER	1	
12	47X-25894-00	TANK, RESERVOIR	1	
13	360-25854-00	DIAPHRAGM, RESERVOIR	1	
14	2GU-25855-00	BUSH, DIAPHRAGM	1	
15	2KF-25852-50	CAP, RESERVOIR	1	
16	90159-06056	SCREW, WITH WASHER	1	
17	4BH-25895-00	HOSE, RESERVOIR	1	
18	90467-14057	CLIP	2	
19	4FE-2582J-00	HOSE, BRAKE 6	1	
20	4FE-2582K-00	HOSE, BRAKE 7	1	
21	90401-10096	BOLT, UNION	4	
22	90201-10118	WASHER, PLATE	8	
23	3XV-25875-00	HOLDER, BRAKE HOSE 1	1	
24	95026-06016	BOLT, FLANGE	1	
25	4BH-25886-10	HOLDER, BRAKE HOSE	1	

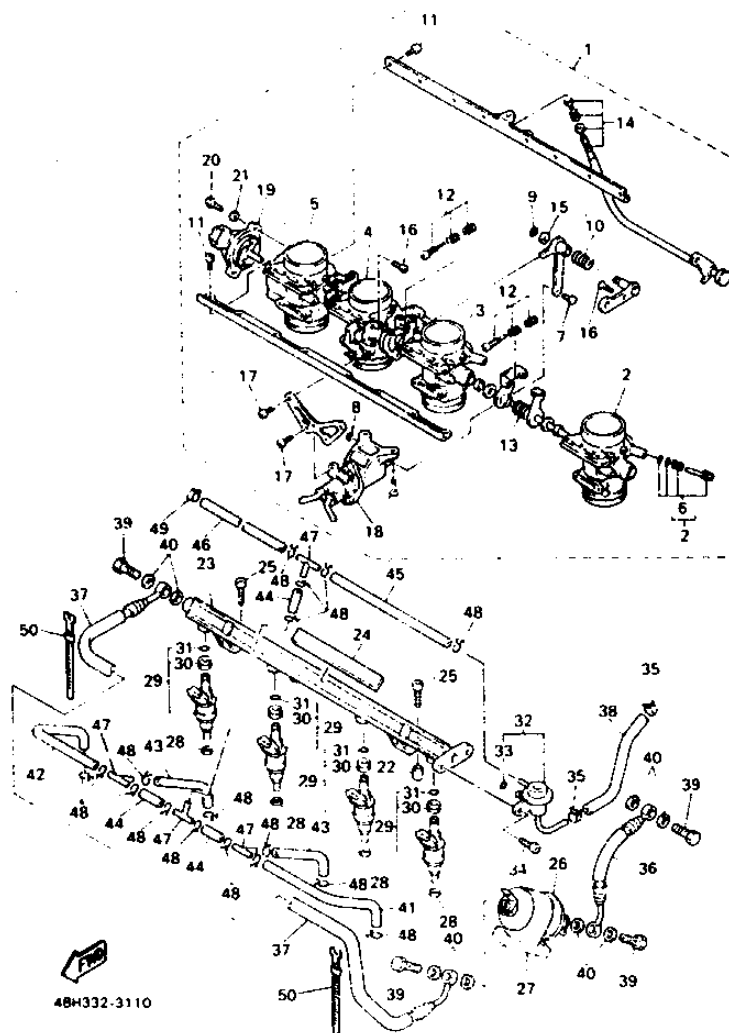


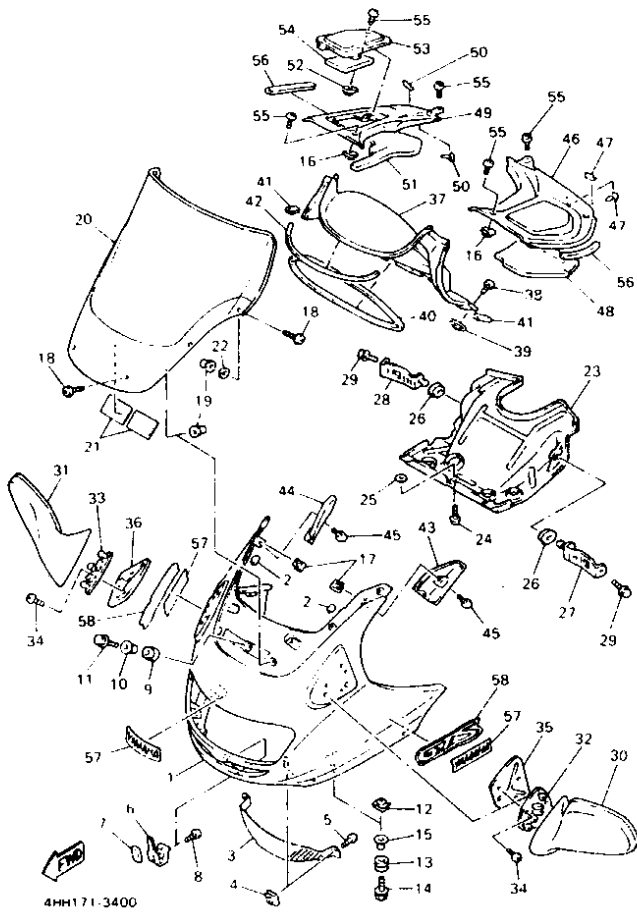
FIG. 11 INTAKE 2

REF. NO.	PART NO.	DESCRIPTION	QTY
1	48H-13750-00	THROTTLE BODY ASSY	1
2	48H-13751-00	.BODY, THROTTLE 1	1
3	48H-13752-00	.BODY, THROTTLE 2	1
4	48H-13753-00	.BODY, THROTTLE 3	1
5	48H-13754-00	.BODY, THROTTLE 4	1
6	48H-14105-00	.PILOT SCREW SET	1
7	48H-14386-00	.PIN, FLOAT	1
8	256-14919-00	.CLIP	1
9	820-14137-00	.CLIP	1
10	48H-14938-00	.SPRING	1
11	98501-05012	.SCREW, PAN HEAD	16
12	48H-14103-00	.THROTTLE SCREW SET	3
13	1HX-14131-00	.SPRING, THROTTLE VALVE	2
14	48H-1490K-00	.STOP SCREW SET	1
15	22F-14117-00	.WASHER, PLUG SCREW	1
16	98702-05010	.SCREW, FLAT HEAD	2
17	98580-04008	.SCREW, PAN HEAD	4
18	48H-14204-00	.CASE, STARTER	1
19	48H-85885-00	.THROTTLE SENSOR ASSY	1
20	48H-14592-00	.SCREW	2
21	92901-04600	.WASHER, PLATE	2
22	99510-08012	PIN, DOWEL	2
23	48H-13938-00	PIPE	1
24	34M-21639-00	DAMPER 2	1
25	91311-06025	BOLT	2
26	48H-13915-00	FILTER	1
27	48H-14425-00	DAMPER 1	1
28	48H-13764-00	GASKET	4
29	48H-13761-00	INJECTOR ASSY	4
30	48H-13766-00	.RUBBER, INJECTOR	1
31	48H-13769-00	.O-RING	1
32	48H-13908-00	REGULATOR, PRESSURE	1
33	48H-13769-00	.O-RING	1
34	90110-06145	BOLT, HEXAGON SOCKET HEAD	2
35	90467-13114	CLIP	2
36	48H-13971-00	PIPE, FUEL 1	1
37	48H-13972-00	PIPE, FUEL 2	1
38	48H-13973-00	PIPE, FUEL 3	1
39	48H-13573-00	BOLT 1	4
40	90430-12219	GASKET	8
41	48H-13542-00	HOSE, VACUUM SENSING 1	1
42	48H-13544-00	HOSE, VACUUM SENSING 2	1
43	48H-13532-00	HOSE, VACUUM SENSING 3	2
44	48H-13533-00	HOSE, VACUUM SENSING 4	3
45	48H-13534-00	HOSE, VACUUM SENSING 5	1
46	48H-13535-00	HOSE, VACUUM SENSING 5	1
47	90413-05014	WAY 3	4
48	90467-08021	CLIP	17
49	90467-07138	CLIP	1
50	437-83936-11	BAND, SWITCH CORD	2

C2

C3

FIG. 40 COWLING 1



REF NO	PART NO.	DESCRIPTION	QTY	REMARKS
1	4BH-28350-00-P1	COWLING ASSY	1	DEEP RED COCKTAIL 2
2	3MA-27491-00	PROTECTOR	2	
3	4BH-28336-00	PLATE	1	
4	90183-05061	NUT, SPRING	2	
5	90154-05013	SCREW, BINDING	2	
6	4BH-28358-00	STAY 3	1	
7	34M-2139X-00	DAMPER	1	
8	90154-05013	SCREW, BINDING	1	
9	90480-13398	GROMMET	1	
10	90387-067K6	COLLAR	1	
11	90119-06060	BOLT, WITH WASHER	1	
12	90183-06053	NUT, SPRING	2	
13	90480-15257	GROMMET	2	
14	90119-06163	BOLT, WITH WASHER	2	
15	90387-081F5	COLLAR	2	
16	90183-05024	NUT, SPRING	2	
17	90183-05061	NUT, SPRING	2	
18	90150-05023	SCREW, ROUND HEAD	6	
19	90179-05523	NUT	6	
20	4BH-28381-10	WINDSHIELD	1	
21	1JK-21735-00	SEAL 2	2	
22	3YF-21268-00	SEAL	4	
23	4BH-28365-00	COVER	1	
24	90149-06194	SCREW	1	
25	4U5-2176E-00	PLATE	1	
26	90480-12325	GROMMET	2	
27	4BH-28366-00	BRACKET	1	
28	4BH-28367-00	BRACKET	1	
29	95826-06010	BOLT, FLANGE	2	
30	4BH-26280-10	REAR VIEW MIRROR ASSY(LEFT)	1	DEEP RED COCKTAIL 2
31	4BH-26290-10	REAR VIEW MIRROR ASSY(RIGHT)	1	DEEP RED COCKTAIL 2
32	4BH-2831W-00	STAY, MIRROR 1	1	
33	4BH-2832W-00	STAY, MIRROR 2	1	
34	98906-05014	SCREW, BINDING	6	
35	4BH-2834N-00	BRACKET, MIRROR 1	1	
36	4BH-2834R-00	BRACKET, MIRROR 2	1	
37	4BH-2836R-00	PANEL, INNER 5	1	
38	90154-05013	SCREW, BINDING	4	
39	90183-05024	NUT, SPRING	4	
40	36Y-28348-00	MOLE 4	1	
41	3EN-28345-50	MOLE 1	2	
42	3CV-2834H-01	MOLE 6	1	
43	4BH-2836M-00	PANEL, INNER 3	1	
44	4BH-2836N-00	PANEL, INNER 4	1	
45	98906-05012	SCREW, BINDING	2	
46	4BH-2836K-00	PANEL, INNER 1	1	
47	3TU-2178A-00	LABEL	2	
48	4BH-28218-00	SEAL 1	1	
49	4BH-2836L-00	PANEL, INNER 2	1	
50	3TU-2178A-00	LABEL	2	
51	4BH-28238-00	SEAL 3	1	
52	90183-05024	NUT, SPRING	1	
53	4BH-2839K-00	LID 1	1	
54	4BH-28228-00	SEAL 2	1	
55	90154-05013	SCREW, BINDING	7	
56	4BH-28376-00	TRIM	2	
57	99236-00100	EMBLEM, YAMAHA	3	
58	4BH-28315-20	EMBLEM	2	

F4

F5

F6

FIG. 12 EXHAUST

REF. NO.	PART NO.	DESCRIPTION	QTY
1	4BH-14610-00	EXHAUST PIPE ASSY 1	1
2	92906-06600	.WASHER, PLATE	1
3	90101-06576	.BOLT	1
4	4BH-14620-00	EXHAUST PIPE ASSY 2	1
5	92906-06600	.WASHER, PLATE	1
6	90101-06576	.BOLT	1
7	4BH-14630-00	EXHAUST PIPE ASSY 3	1
8	92906-06600	.WASHER, PLATE	1
9	90101-06576	.BOLT	1
10	4BH-14650-00	EXHAUST PIPE ASSY 4	1
11	92906-06600	.WASHER, PLATE	1
12	90101-06576	.BOLT	1
13	4BH-14730-00	CHAMBER ASSY	1
14	4BH-14714-00	.GASKET, MUFFLER	4
15	95023-08020	.BOLT	4
16	95811-08035	BOLT, FLANGE	2
17	3YF-14613-01	GASKET, EXHAUST PIPE	4
18	90179-08410	NUT	8
19	4BH-14710-00	MUFFLER ASSY 1	1
20	3HE-14755-00	.GASKET, SILENCER	1
21	95821-08025	.BOLT, FLANGE	1
22	90105-10316	BOLT, WASHER BASED	1
23	95701-10500	NUT, FLANGE	1
24	90201-10669	WASHER, PLATE	1

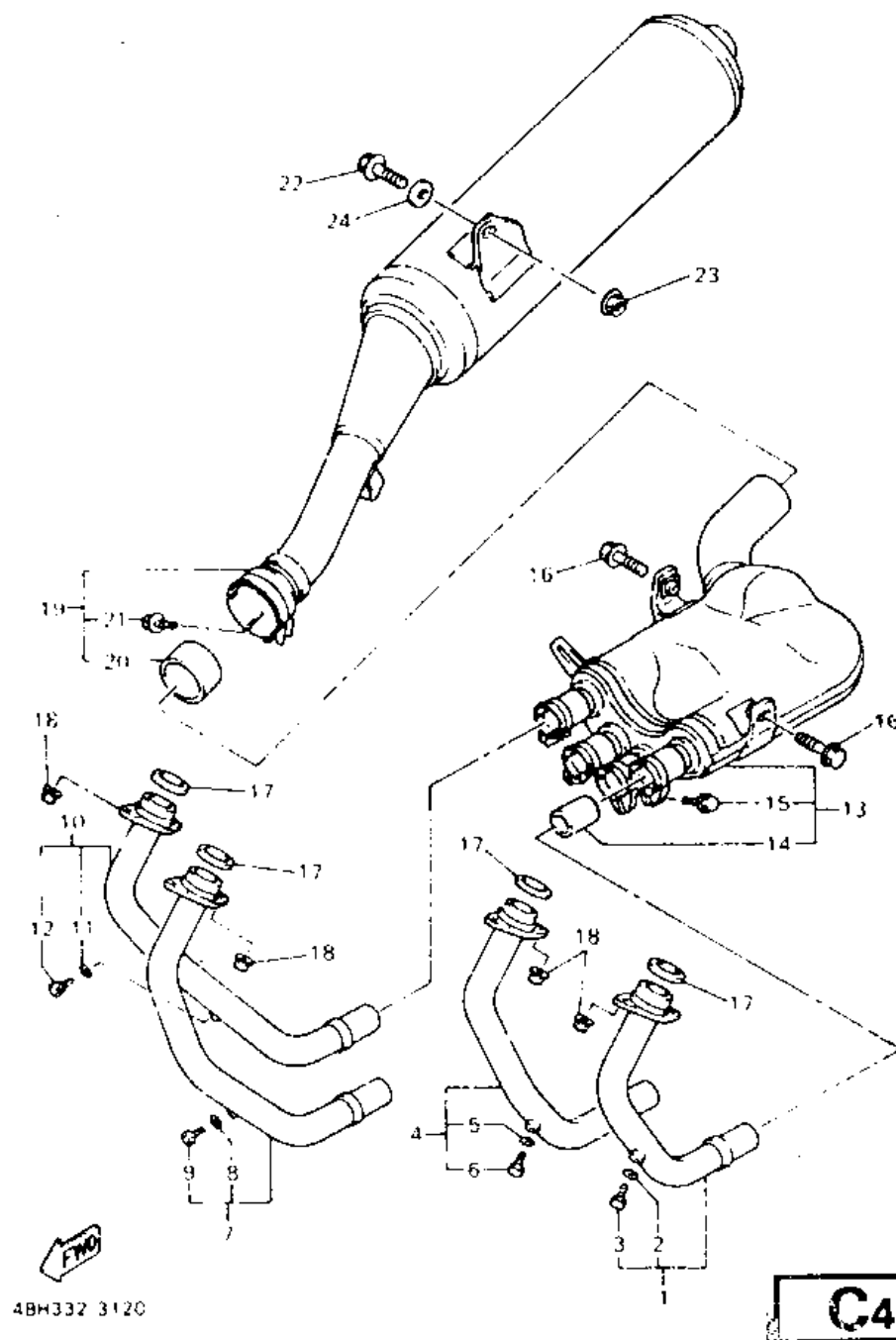
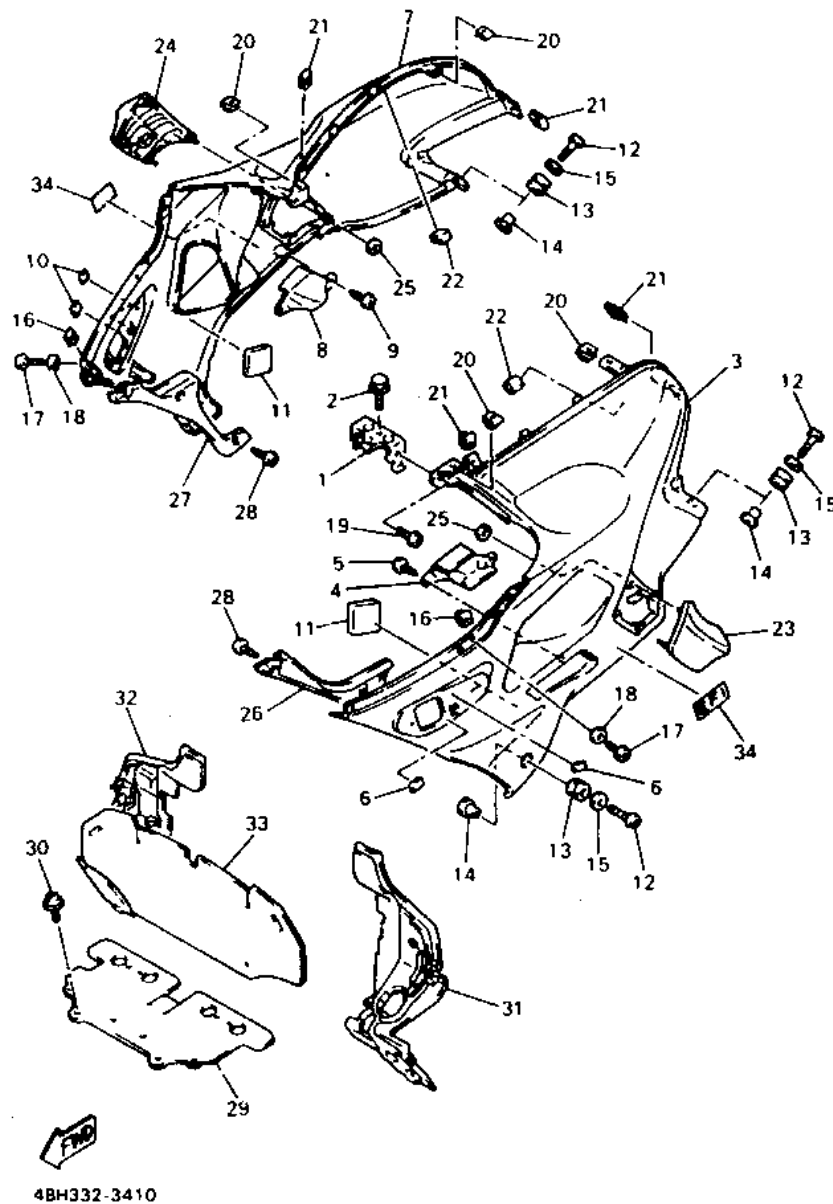


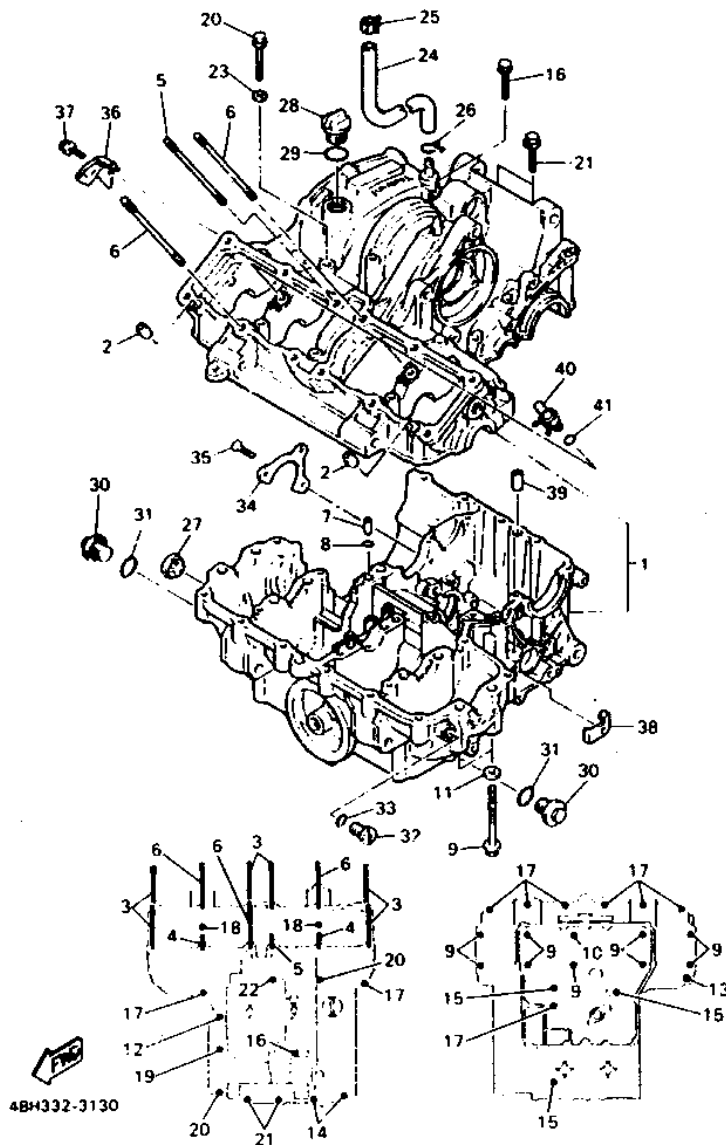
FIG. 41 COWLING 2



F7

REF. NO.	PART NO.	DESCRIPTION	QTY	REMARKS
1	4BH-28321-00	STAY 1	1	
2	95826-06010	BOLT, FLANGE	1	
3	4BH-2835J-00-P1	BODY, FRONT LOWER 1	1	DEEP RED COCKTAIL 2
4	4BH-2838N-00	DUCT 1	1	
5	97706-50012	SCREW, TAPPING	2	
6	3TU-2178A-00	LABEL	2	
7	4BH-2835K-00-P1	BODY, FRONT LOWER 2	1	DEEP RED COCKTAIL 2
8	4BH-2838R-00	DUCT 2	1	
9	97706-50012	SCREW, TAPPING	2	
10	3TU-2178A-00	LABEL	2	
11	5G7-82121-00	PAD, BATTERY	2	
12	90110-06202	BOLT, HEXAGON SOCKET HEAD	4	
13	90480-10289	GROMMET	4	
14	90387-066Y6	COLLAR	4	
15	90201-06697	WASHER, PLATE	4	
16	90183-05024	NUT, SPRING	4	
17	90110-05201	BOLT, HEXAGON SOCKET HEAD	4	
18	90202-05180	WASHER, PLATE	4	
19	90154-05013	SCREW, BINDING	2	
20	90183-05061	NUT, SPRING	4	
21	90183-05024	NUT, SPRING	4	
22	4BH-2835T-00	DAMPER, LOCATING 1	2	
23	4BH-2832M-10	PROTECTOR 1	1	RED
24	4BH-2832N-10	PROTECTOR 2	1	RED
25	90183-06011	NUT, SPRING	4	
26	4BH-2835U-00	PANEL 1	1	
27	4BH-2835V-00	PANEL 2	1	
28	97706-50012	SCREW, TAPPING	5	

FIG. 13 CRANKCASE

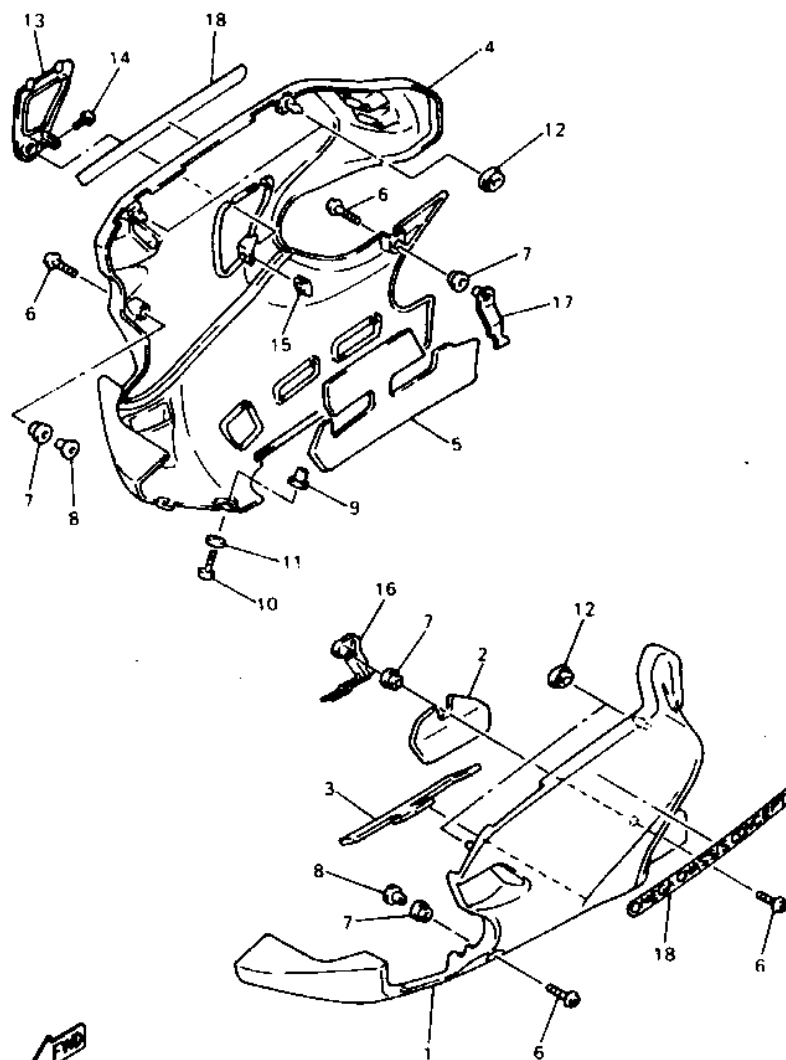


REF. NO.	PART NO.	DESCRIPTION	Q'TY
1	3GM-15100-51	CRANKCASE ASSY	1
2	93530-10014	PIN, DOWEL	2
3	90116-10532	BOLT, STUD	6
4	90116-10569	BOLT, STUD	2
5	90116-10531	BOLT, STUD	1
6	90116-10576	BOLT, STUD	3
7	90387-06383	COLLAR	1
8	93210-07135	O-RING	1
9	90105-09373	BOLT, WASHER BASED	9
10	90105-09580	BOLT, WASHER BASED	1
11	90201-096J9	WASHER, PLATE	4
12	95811-08035	BOLT, FLANGE	1
13	95811-08045	BOLT, FLANGE	1
14	95811-08060	BOLT, FLANGE	2
15	95811-08080	BOLT, FLANGE	3
16	95811-08140	BOLT, FLANGE	1
17	95811-08045	BOLT, FLANGE	9
18	95811-08055	BOLT, FLANGE	2
19	95811-08065	BOLT, FLANGE	1
20	95811-08090	BOLT, FLANGE	2
21	95811-08060	BOLT, FLANGE	2
22	90105-09555	BOLT, WASHER BASED	1
23	90201-08087	WASHER, PLATE	1
24	4BH-11166-00	PIPE, BREATHER 1	1
25	90467-15054	CLIP	1
26	90467-14015	CLIP	1
27	2H7-15361-00	GAUGE, LEVEL	1
28	3FV-15363-00	PLUG, OIL	1
29	93210-27778	O-RING	1
30	4H7-15189-00	PLUG	2
31	93210-20573	O-RING	2
32	90340-14C68	PLUG, STRAIGHT SCREW	1
33	93210-14389	O-RING	1
34	1AE-15383-00	PLATE, BEARING COVER	1
35	90151-06014	SCREW, COUNTERSUNK	3
36	90462-08184	CLAMP	1
37	95023-06012	BOLT	1
38	90462-08158	CLAMP	1
39	99510-12018	PIN, DOWEL	1
40	2TK-15105-00	NOZZLE ASSY	2
41	93210-06632	O-RING	2

C5

C6

FIG. 42 COWLING 3

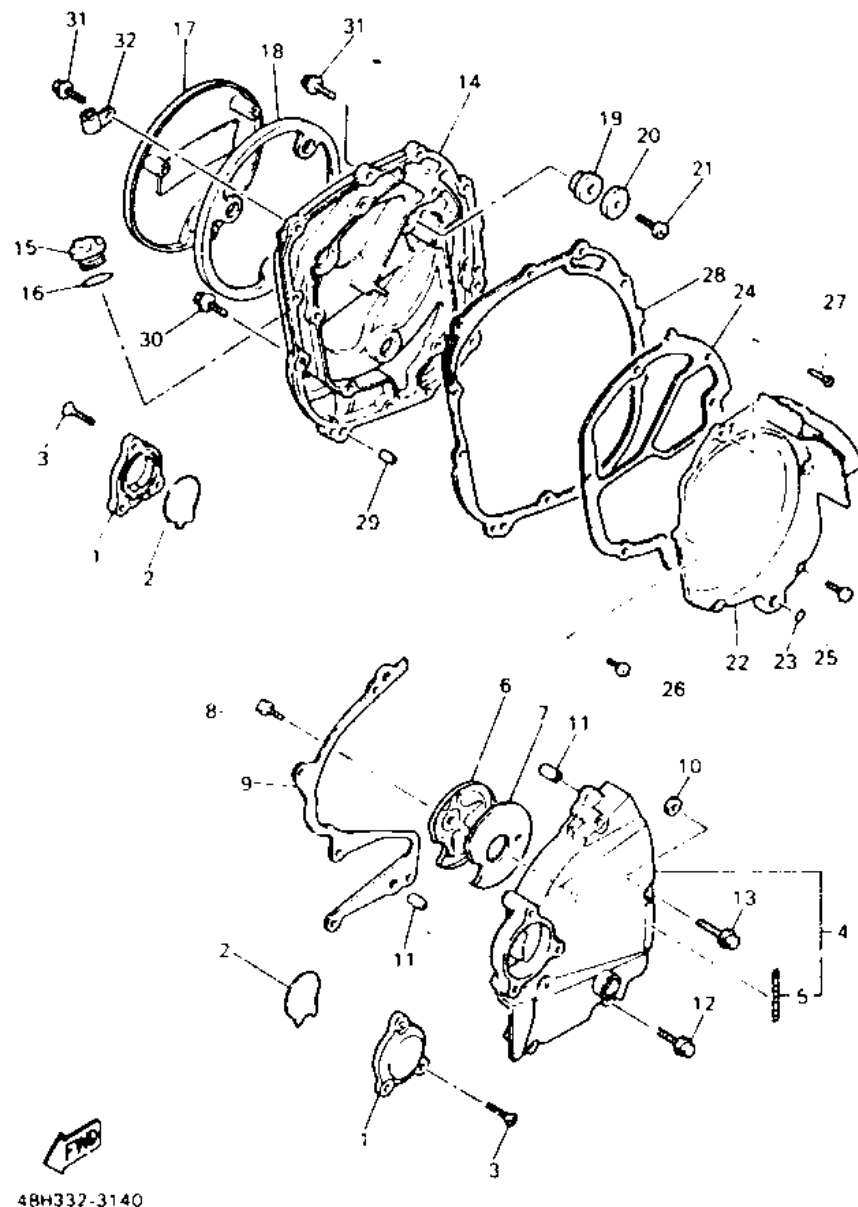


48H332-3420

REF. NO.	PART NO.	DESCRIPTION	QTY	REMARKS
1	4BH-28385-00-6M	COVER, LOWER	1	STAR SILVER
2	4BH-2848L-00	SEAT 3	1	
3	4BH-2848M-00	SEAT 4	1	
4	4BH-28395-00-6M	COVER, UNDER	1	STAR SILVER
5	4BH-2848N-00	SEAT 5	1	
6	90110-06202	BOLT, HEXAGON SOCKET HEAD	4	
7	90480-13398	GROMMET	4	
8	90387-067N5	COLLAR	2	
9	90179-05523	NUT	2	
10	90149-05299	SCREW	2	
11	90202-05180	WASHER, PLATE	2	
12	90480-01559	GROMMET	4	
13	4BH-2839L-00-6M	LID 2	1	STAR SILVER
14	90154-05013	SCREW, BINDING	1	
15	90183-05024	NUT, SPRING	1	
16	4BH-2836A-00	BRACKET 1	1	
17	4BH-2836E-00	BRACKET 2	1	
18	4BH-28328-00	EMBLEM	2	

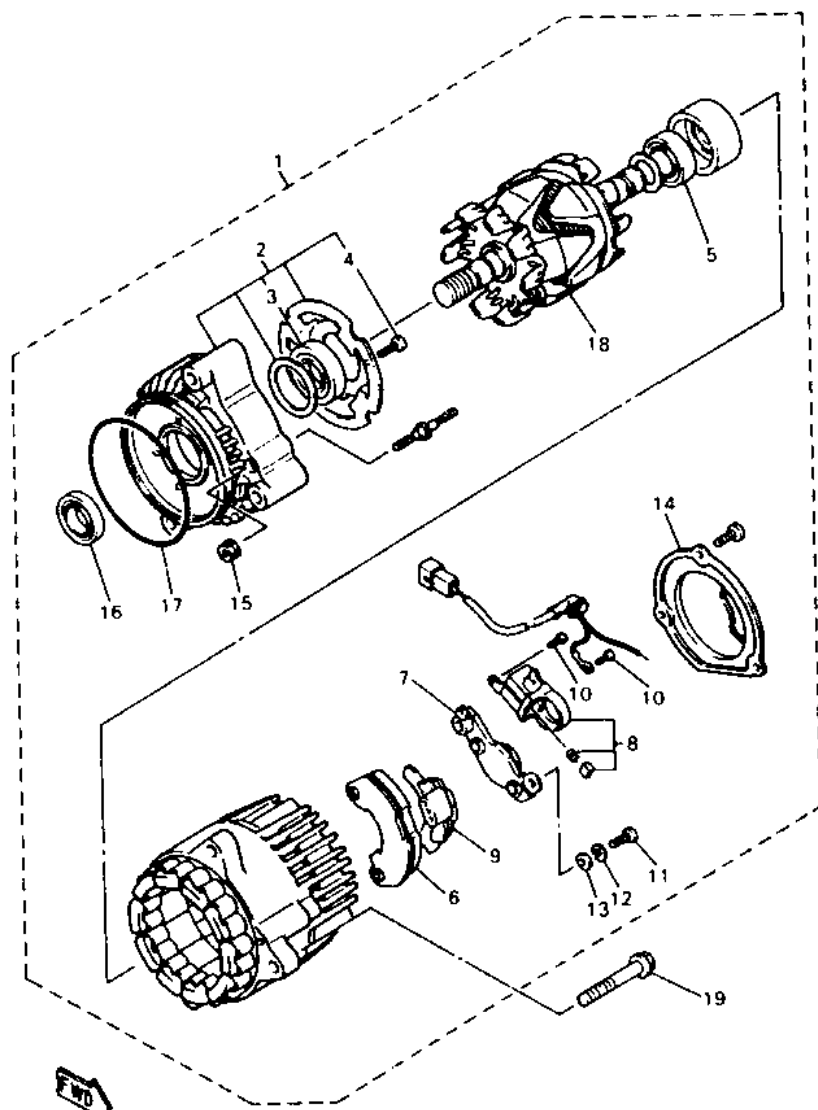
F9

FIG. 14 CRANKCASE COVER 1



REF. NO.	PART NO.	DESCRIPTION	QTY
1	3GM-15416-00	COVER, OIL PUMP	2
2	1AE-15456-00	GASKET, OIL PUMP COVER 1	2
3	90152-06014	SCREW, COUNTERSUNK	6
4	3GM-15410-00	CRANKCASE COVER ASSY 1	1
5	2GH-15435-00	EMBLEM	1
6	3GM-15427-00	COVER, CAP 2	1
7	1AE-15316-00	DAMPER, ENGINE MOUNT 1	1
8	92011-06010	BOLT, BUTTON HEAD	1
9	4BH-15451-00	GASKET, CRANKCASE COVER 1	1
10	4CR-15467-00	GASKET	1
11	99510-08012	PIN, DOWEL	2
12	95023-06040	BOLT	3
13	95021-06050	BOLT, FLANGE	2
14	4BH-15421-00	COVER, CRANKCASE 2	1
15	3F9-15382-00	PLUG, OIL LEVEL	1
16	93210-27778	O-RING	1
17	3GM-15417-00	COVER, CAP	1
18	3GM-15449-00	RING, RUBBER	1
19	4H7-15486-00	GROMMET	3
20	90209-06096	WASHER	3
21	98580-06010	SCREW, PAN HEAD	3
22	3GM-15346-00	BREATHER 1	1
23	93210-09418	O-RING	1
24	4BH-15463-00	GASKET, CARBURETOR COVER 2	1
25	98580-06020	SCREW, PAN HEAD	4
26	90157-06104	SCREW, PAN HEAD	1
27	90152-06024	SCREW, COUNTERSUNK	1
28	4BH-15461-00	GASKET, CRANKCASE COVER 2	1
29	99510 08012	PIN DOWEL	
30	95023 06030	BOLT	
31	95023 06020	BOLT	
32	90465 08038	CLAMP	

FIG. 43 GENERATOR



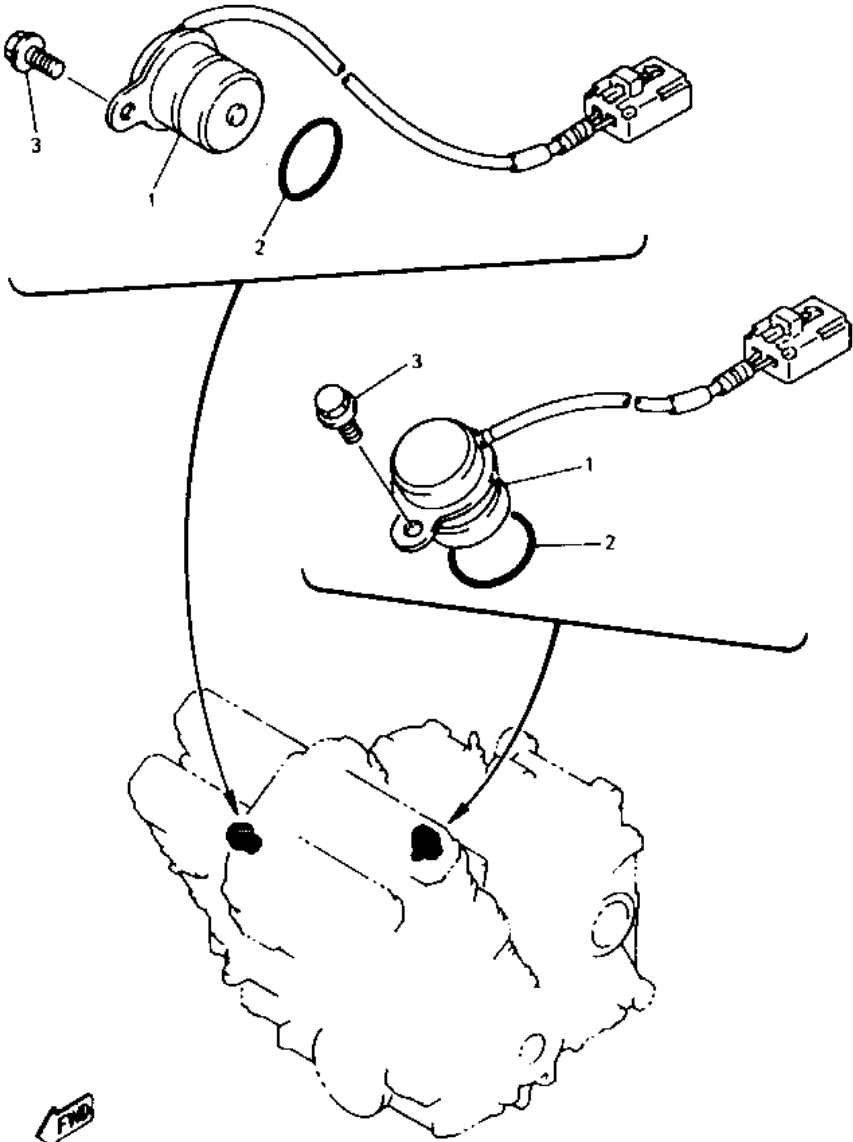
4BH332-3430

REF. NO.	PART NO.	DESCRIPTION	Q'TY	REMARKS
1	4BH-81600-00	A.C. GENERATOR ASSY	1	
2	4BH-81634-00	.STATOR ASSY	1	
3	4BH-81643-00	..BEARING	1	
4	4BH-81645-00	..SCREW	4	
5	4BH-81643-10	.BEARING	1	
6	4BH-81970-00	.RECTIFIER ASSY	1	
7	36Y-81910-50	.VOLTAGE REGULATOR ASSY	1	
8	3FV-81619-00	.BRUSH HOLDER ASSY	1	
9	4BH-81972-00	.COVER, RECTIFIER	1	
10	3FV-81645-00	.SCREW	2	
11	98501-05018	.SCREW, PAN HEAD	3	
12	92901-05100	.WASHER, SPRING	3	
13	92901-05600	.WASHER, PLATE	3	
14	4BH-81604-00	.COVER ASSY	1	
15	95701-05500	.NUT, FLANGE	2	
16	36Y-81638-50	.OIL SEAL	1	
17	2KT-81642-50	.O-RING	1	
18	4BH-81660-00	.ROTOR ASSY	1	
19	95816-08065	BOLT, FLANGE	3	

F10

FIG. 44 PICK UP COIL • GOVERNOR

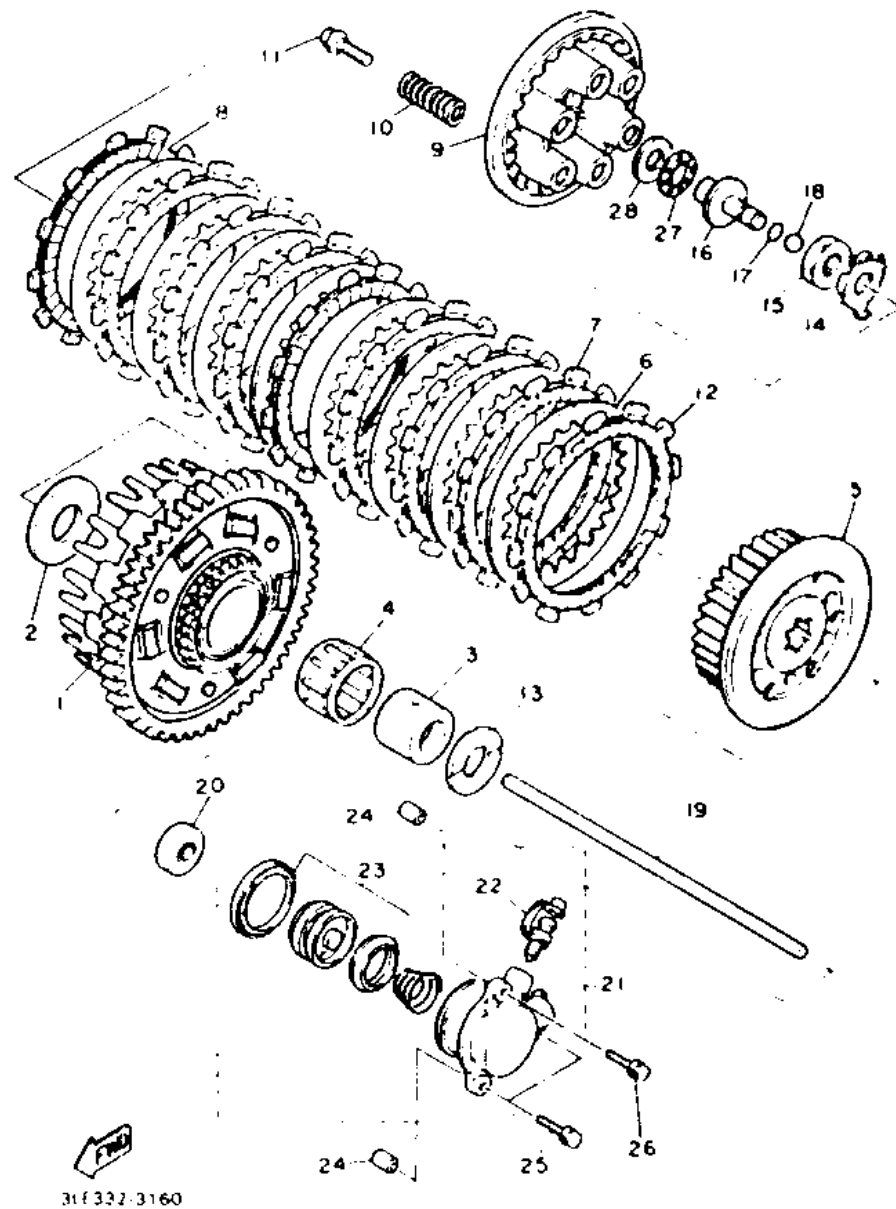
REF. NO.	PART NO.	DESCRIPTION	Q'TY	REMARKS
1	4BH-81670-00	PICK-UP ASSY	2	
2	93210-19216	O-RING	2	
3	95023-06012	BOLT	2	



4BH332-3440

F11

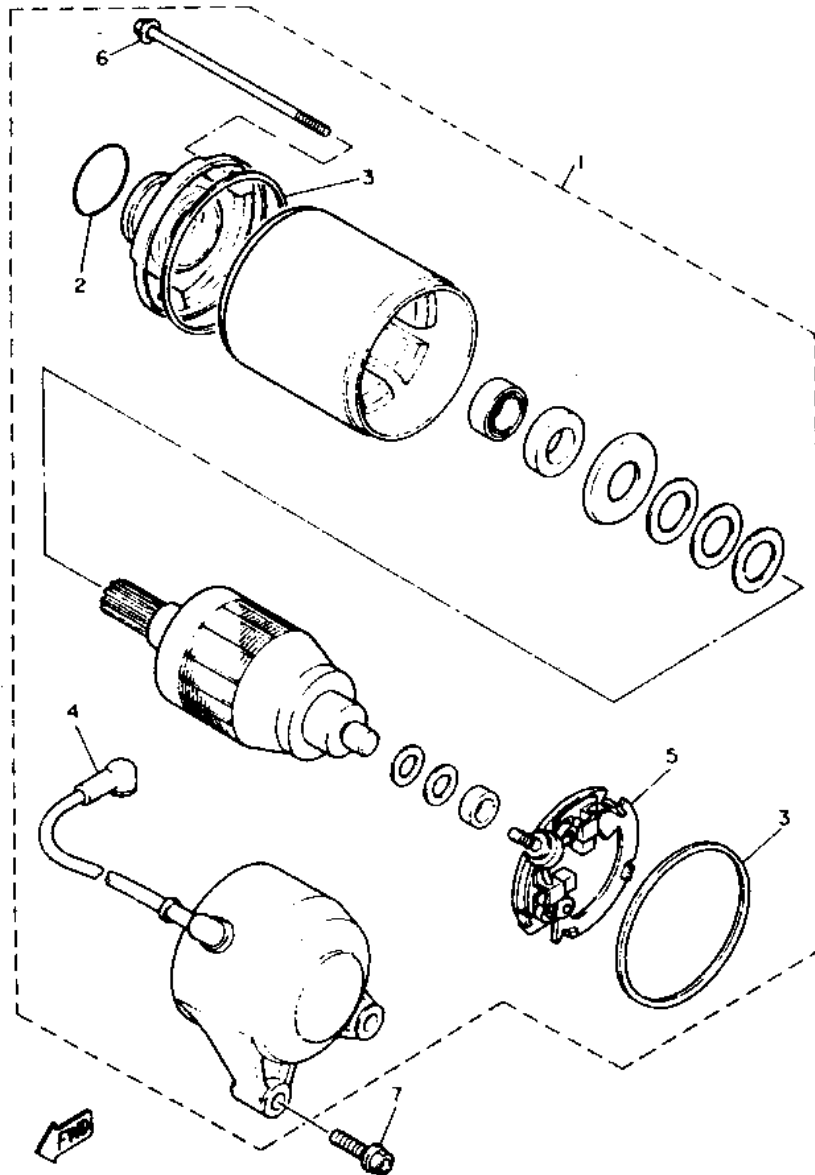
FIG. 16 CLUTCH



REF NO	PART NO	DESCRIPTION	QTY
1	3GM-16150-01	PRIMARY DRIVEN GEAR COMP	1
2	1AE-16154-00	PLATE THRUST 1	1
3	90560-25270	SPACER	1
4	93310-340N8	BEARING, CYLINDRICAL	1
5	48H-16371-00	BOSS, CLUTCH	1
6	31A-16325-00	PLATE, CLUTCH 2	8
7	4H7-16321-01	PLATE, FRICTION	7
8	31A-16321-00	PLATE, FRICTION	1
9	3GM-16351-00	PLATE, PRESSURE 1	1
10	90501-230E4	SPRING, COMPRESSION	6
11	90159-08123	SCREW WITH WASHER	6
12	3GM-16321-00	PLATE, FRICTION	1
13	1AE-16164-00	PLATE, THRUST 2	1
14	90215-20231	WASHER, LOCK	1
15	90170-20327	NUT	1
16	1LJ-16356-00	ROD, PUSH 1	1
17	93210-06632	O-RING	1
18	93511-32027	BALL	1
19	1AE-16357-00	ROD, PUSH 2	1
20	93109-08061	OIL SEAL	1
21	1TV-16381-10	PUSH LEVER COMP	1
22	36Y-W0048-00	.BREED SCREW KIT	1
23	26H-W0098-00	.PUSH LEVER SEAL KIT	1
24	99510-08012	PIN, DOWEL	2
25	95026-06030	BOLT, FLANGE	2
26	95026-06090	BOLT, FLANGE	1
27	93340-21505	BEARING, THRUST	1
28	90201-150H2	WASHER, PLATE	1

C10

FIG. 45 STARTING MOTOR

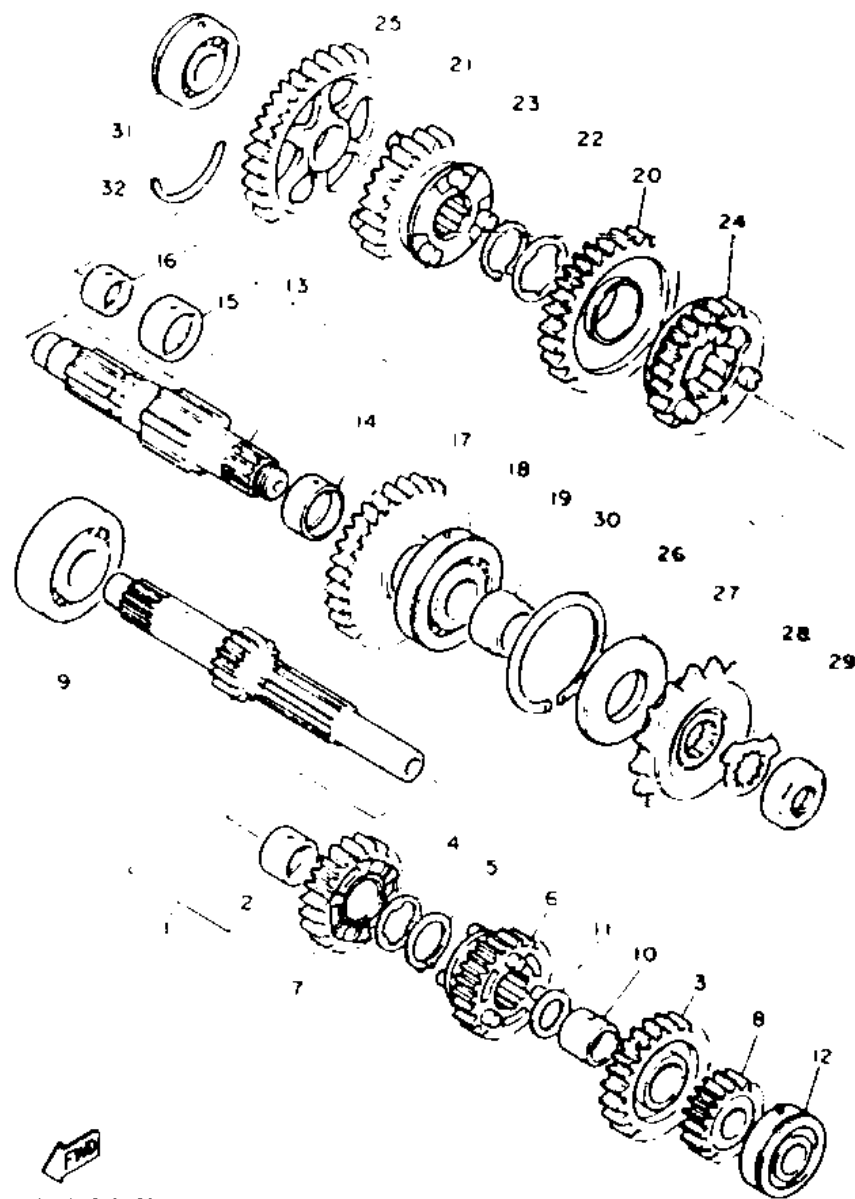


3KS351-9420

F12

REF. NO.	PART NO.	DESCRIPTION	QTY	REMARKS
1	3XF-81800-00	STARTING MOTOR ASSY	1	
2	26H-81847-00	O-RING	1	
3	11H-81844-00	GASKET	2	
4	2KT-81815-00	CORD, STARTER MOTOR	1	
5	3KS-81840-00	BRUSH HOLDER ASSY	1	
6	3HE-81826-00	BOLT	2	
7	95811-06025	BOLT, FLANGE	2	

FIG 17 TRANSMISSION



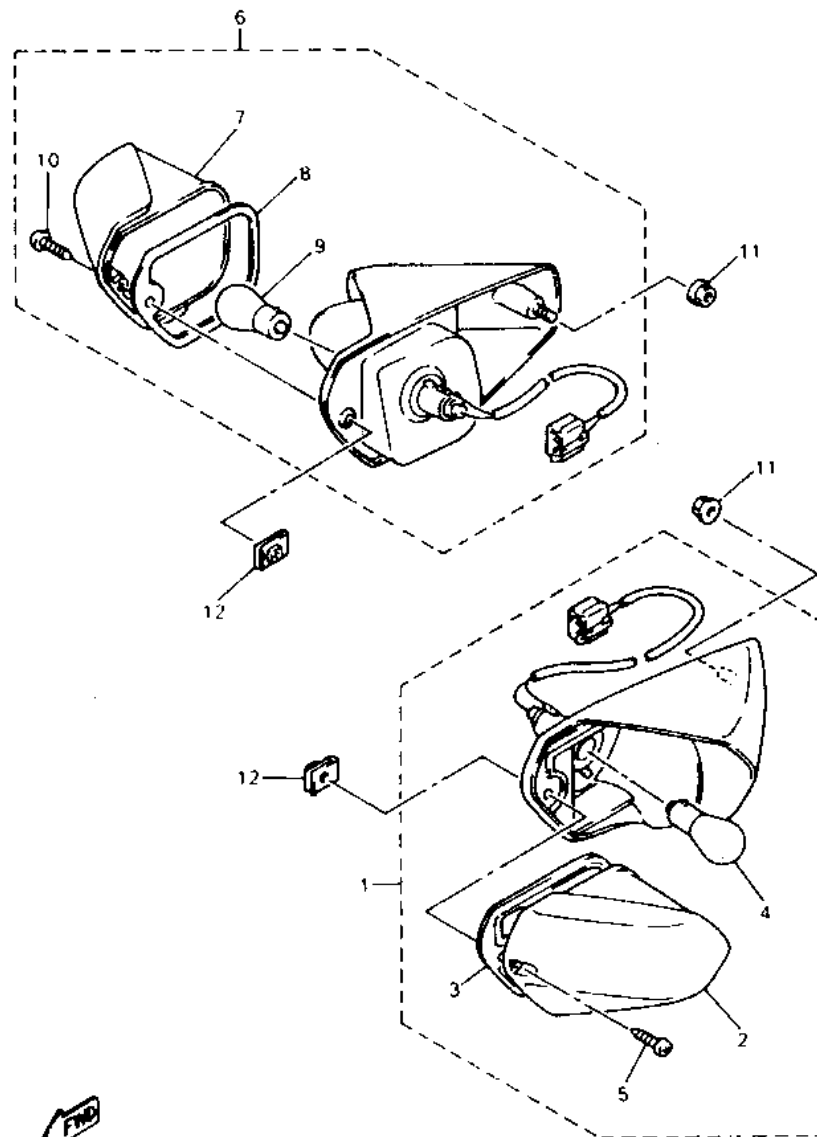
31E332 9010

C11

C12

REF NO	PART NO	DESCRIPTION	QTY
1	2GH-W1741-00	MAIN AXLE ASSY (14T)	1
2	90387-253M8	COLLAR	1
3	2GH-17151-00	GEAR 5TH PINION (27T)	1
4	90209-22191	WASHER	1
5	93440-25084	CIRCLIP	1
6	2GH-17131-00	GEAR 3RD PINION (21T)	1
7	2GH-17141-00	GEAR 4TH PINION (23T)	1
8	2GH-17121-00	GEAR 2ND PINION (18T)	1
9	93306-30525	BEARING (B6305)	1
10	90387-203M7	COLLAR	1
11	90201-200K3	WASHER PLATE	1
12	93306-20456	BEARING	1
13	3GM-W1742-00	DRIVE AXLE ASSY	1
14	90387-271T7	COLLAR	1
15	90387-281T8	COLLAR	1
16	90387-211T9	COLLAR	1
17	3GM-17221-00	GEAR 2ND WHEEL (32T)	1
18	93305-30501	BEARING	1
19	90387-255V9	COLLAR	1
20	3GM-17231-00	GEAR 3RD WHEEL (29T)	1
21	3GM-17241-00	GEAR 4TH WHEEL (27T)	1
22	90209-25196	WASHER	1
23	93440-28082	CIRCLIP	1
24	3GM-17251-00	GEAR 5TH WHEEL (28T)	1
25	2GH-17211-01	GEAR 1ST WHEEL	1
26	93102-35423	OIL SEAL	1
27	2GH-17460-11	SPROCKET DRIVE 17T(2GH1746170)	1
28	90215-21022	WASHER LOCK	1
29	90179-18020	NUT	1
30	278-17424-01	CIRCLIP 1	1
31	93306-20456	BEARING	1
32	93440-45144	CIRCLIP	1

FIG. 46 FLASHER LIGHT



REF. NO.	PART NO.	DESCRIPTION	QTY	REMARKS
1	4BH-83310-10-P0	FRONT FLASHER LIGHT ASSY 1	1	DEEP RED COCKTAIL 2
2	4BH-83312-00	.LENS, FLASHER	1	
3	4BH-83313-00	.GASKET, FLASHER LENS	1	
4	137-84714-61	.BULB (12V-23/8W)	1	
5	97702-40125	.SCREW, TAPPING	1	
6	4BH-83320-10-P0	FRONT FLASHER LIGHT ASSY 2	1	DEEP RED COCKTAIL 2
7	4BH-83322-00	.LENS, FLASHER 2	1	
8	4BH-83313-00	.GASKET, FLASHER LENS	1	
9	137-84714-61	.BULB (12V-23/8W)	1	
10	97702-40125	.SCREW, TAPPING	1	
11	96701-05500	NUT, FLANGE	2	
12	90183-04058	NUT, SPRING	2	

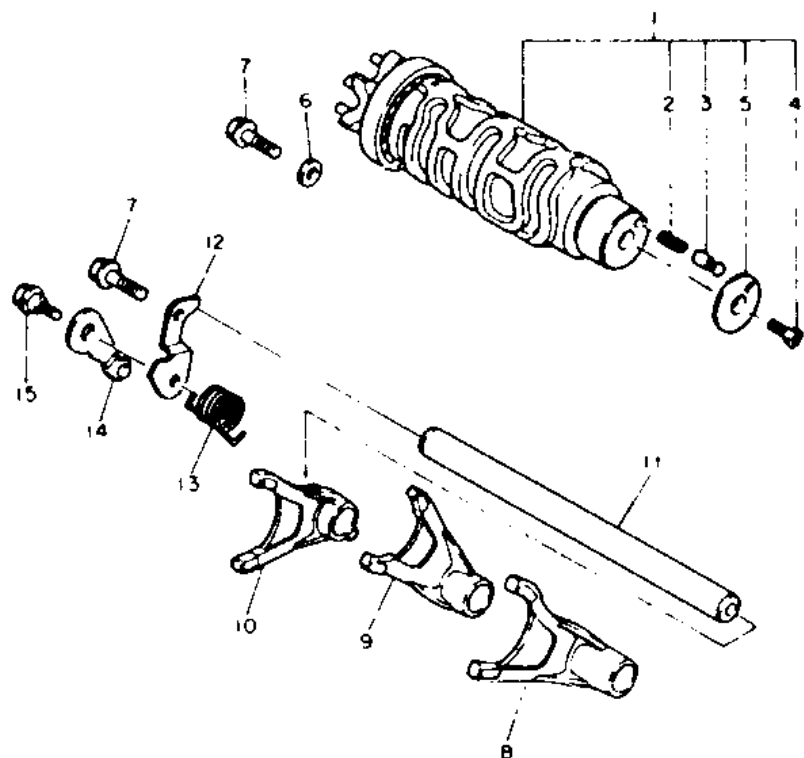


4BH332-3460

F13

FIG. 18 SHIFT CAM - FORK

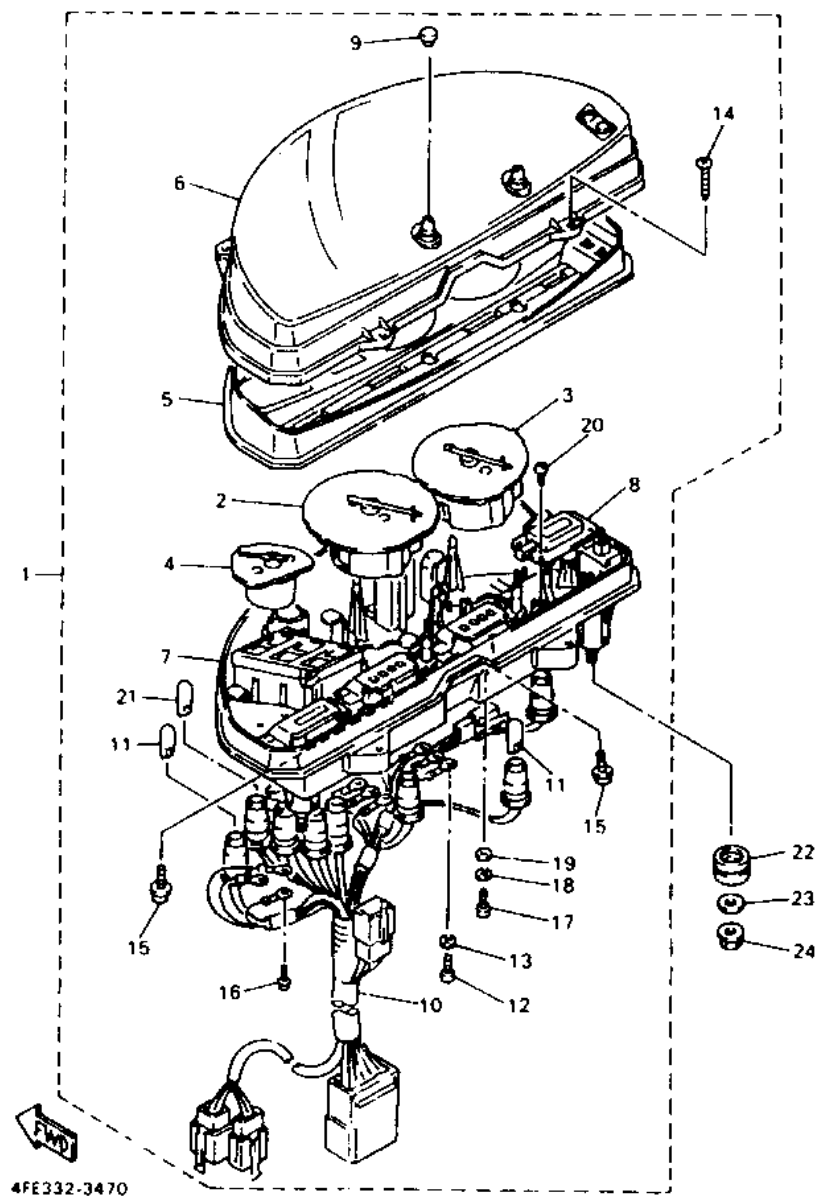
REF NO	PART NO	DESCRIPTION	QTY
1	48M 18540 00	SHIFT CAM ASSY	1
2	90501 06022	SPRING COMPRESSION	1
3	278 18542 00	POINT NEUTRAL	1
4	98701 05012	SCREW FLAT HEAD	1
5	278 18566 00	PLATE SIDE 2	1
6	90201 06643	WASHER PLATE	1
7	95811 06016	BOLT FLANGE	2
8	2GH 18511 00	FORK SHIFT 1	1
9	2GH 18512 00	FORK SHIFT 2	1
10	2GH 18513 00	FORK SHIFT 3	1
11	48M 18531 00	BAR SHIFT FORK GUIDE 1	1
12	1AE 18536 00	STOPPER SHIFT BAR	1
13	90508 26681	SPRING TORSION	1
14	36Y 18140 00	STOPPER LEVER ASSY	1
15	90109 083F8	BOLT	1



1FN310 5180

C13

FIG. 47 METER

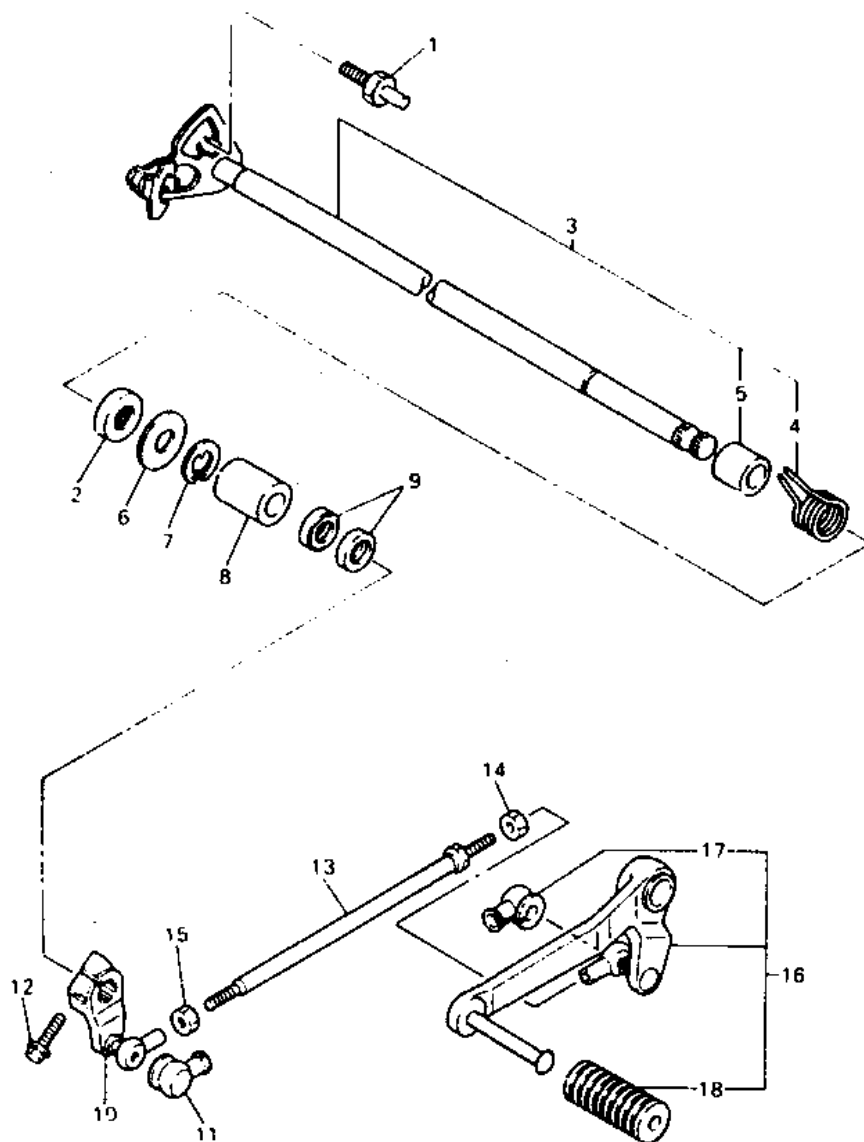


REF. NO.	PART NO.	DESCRIPTION	Q'TY	REMARKS
1	4FE-83500-00	SPEEDOMETER ASSY	1	
2	4BH-83570-00	.SPEEDOMETER ASSY	1	
3	4BH-83540-00	.TACHOMETER ASSY	1	
4	4BH-85750-00	.FUEL METER ASSY	1	
5	4FE-8353L-00	.REFLECTOR	1	
6	4BH-83511-00	.LENS, SPEEDOMETER	1	
7	4FE-8353F-00	.CASE, METER LOWER	1	
8	4BH-83740-00	.DIGITAL CLOCK ASSY	1	
9	29L-83578-00	.KNOB, TRIP METER	2	
10	4FE-83509-00	.SOCKET CORD ASSY	1	
11	4G1-84744-00	.BULB (12V-3.4W)	9	
12	98580-03010	.SCREW, PAN HEAD	6	
13	9299J-03100	.WASHER, SPRING	6	
14	90184-04005	.SCREW, TAPPING	4	
15	90167-04057	.SCREW, TAPPING	4	
16	90159-03102	.SCREW, WITH WASHER	3	
17	98580-04010	.SCREW, PAN HEAD	2	
18	92901-04100	.WASHER, SPRING	2	
19	92901-04800	.WASHER, PLATE	2	
20	97702-30512	.SCREW, TAPPING	2	
21	3GM-83517-00	.BULB(12V-1.7W)	5	
22	5J0-83513-00	DAMPER	3	
23	90201-106H5	WASHER, PLATE	3	
24	90179-06403	NUT	3	

F14

FIG. 19 SHIFT SHAFT

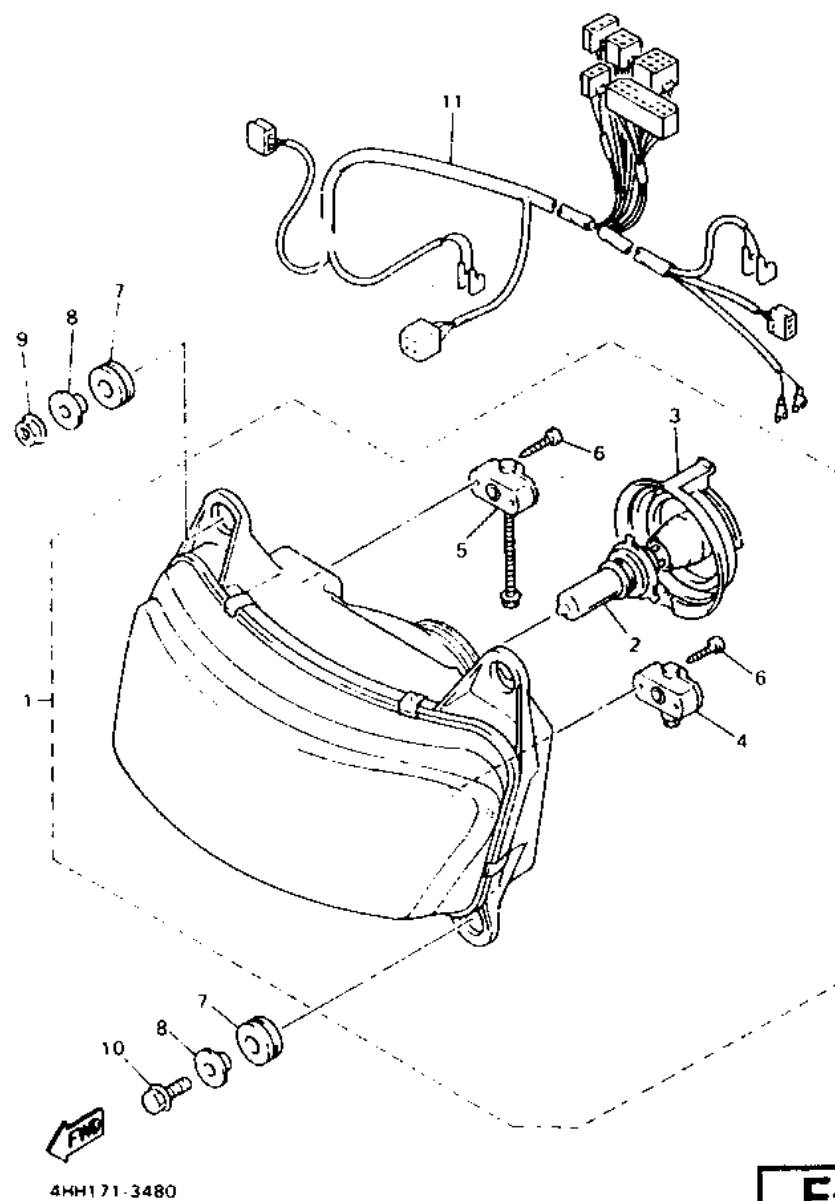
REF. NO.	PART NO.	DESCRIPTION	Q'TY
1	4G0-18127-00	STOPPER, SCREW	1
2	93102-12321	OIL SEAL	1
3	1AE-18101-01	SHIFT SHAFT ASSY	1
4	90508-32682	.SPRING, TORSION	1
5	90387-114K8	.COLLAR	1
6	90201-12575	WASHER, PLATE	1
7	99008-10600	CIRCLIP	1
8	90560-12191	SPACE	1
9	93109-12053	OIL SEAL (SDO 12/18/4-1)	2
10	4BH-18112-00	ARM, SHIFT	1
11	2H9-18154-00	COVER, DUST	1
12	95826-06020	BOLT, FLANGE	1
13	2H9-18115-00	ROD, SHIFT	1
14	90170-06228	NUT(COUNTER CLOCKWISE)	1
15	95380-06700	NUT	1
16	4BH-18110-00	SHIFT PEDAL ASSY	1
17	2H9-18154-00	.COVER, DUST	1
18	132-18113-01	.COVER, SHIFT PEDAL	1



4BH332-3190

C14

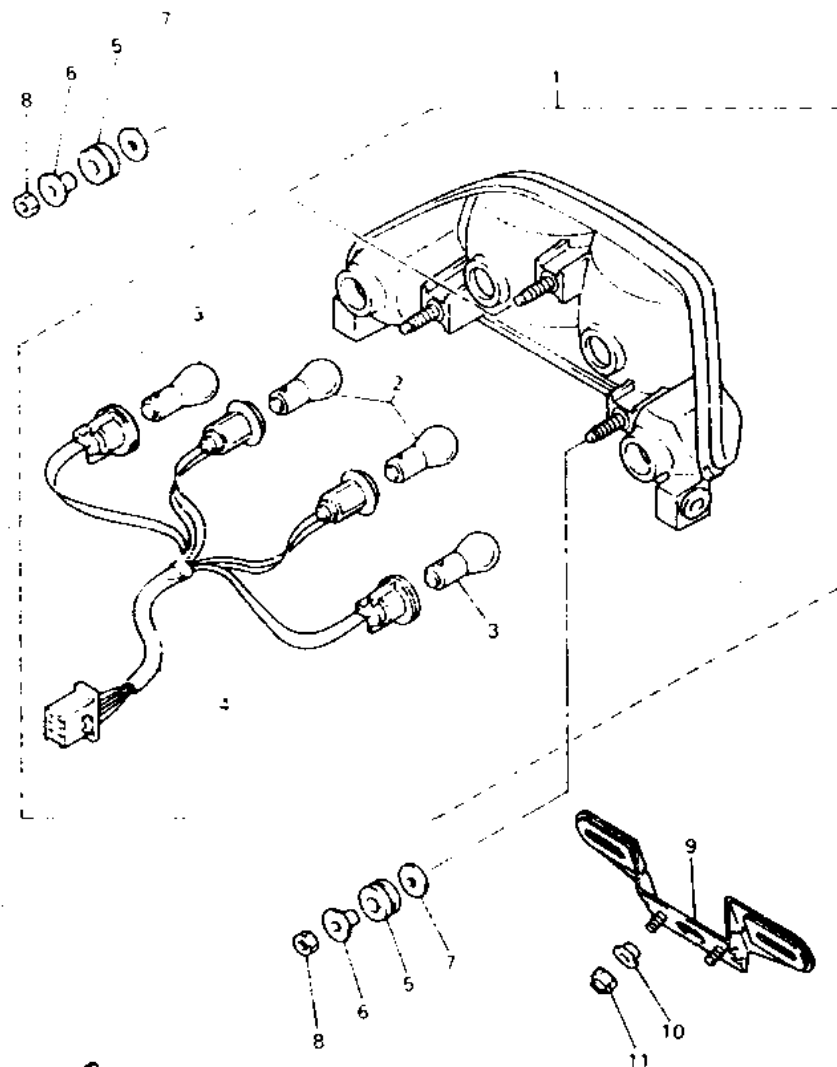
FIG. 48 HEADLIGHT



F15

REF NO.	PART NO.	DESCRIPTION	QTY	REMARKS
1	4BH-84300-30	HEADLIGHT ASSY	1	
2	2F9-84314-00	.BULB (12V-60/55W)	1	(H4)HALOGEN
3	36Y-84397-00	.COVER, SOCKET	1	
4	3LD-8430M-00	.GEAR UNIT ASSY	1	
5	4BH-8430M-00	.GEAR UNIT ASSY	1	
6	97706-40616	.SCREW, TAPPING	4	
7	90480-20564	GROMMET	4	
8	90387-084Y3	COLLAR	4	
9	95706-08500	NUT, FLANGE	2	
10	95816-08025	BOLT, FLANGE	2	
11	4HH-84359-00	CORD, HEADLIGHT	1	

FIG 49 TAILLIGHT

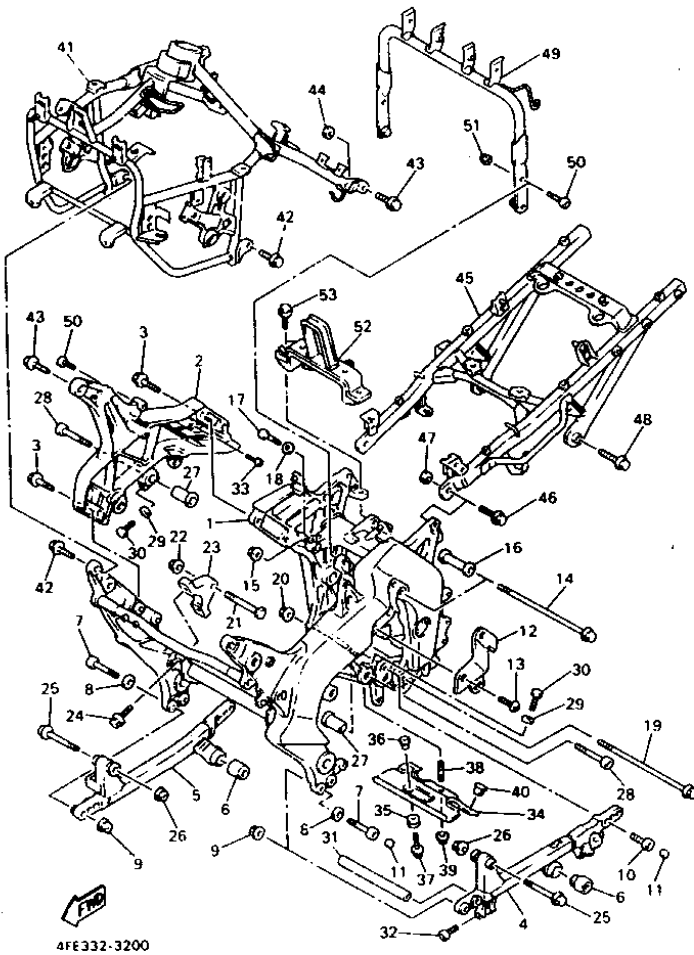


4HH171-3490

G2

REF NO	PART NO.	DESCRIPTION	QTY	REMARKS
1	48H-84710-10	TAILLIGHT UNIT ASSY	1	
2	31L-84714-00	.BULB, TAILLIGHT (12V-21/5W)	2	
3	32H-83331-00	.BULB, FLASHER (12V-21W)	2	
4	48H-84735-00	.CORD ASSY	1	
5	90480-18276	GROMMET	3	
6	90387-06033	COLLAR	3	
7	90201-063J2	WASHER, PLATE	3	
8	95330-06600	NUT	3	
9	4HH-84751-00	BRACKET, LICENSE	1	
10	90387-07717	COLLAR	2	
11	95616-06100	NUT, U	2	

FIG. 20 FRAME

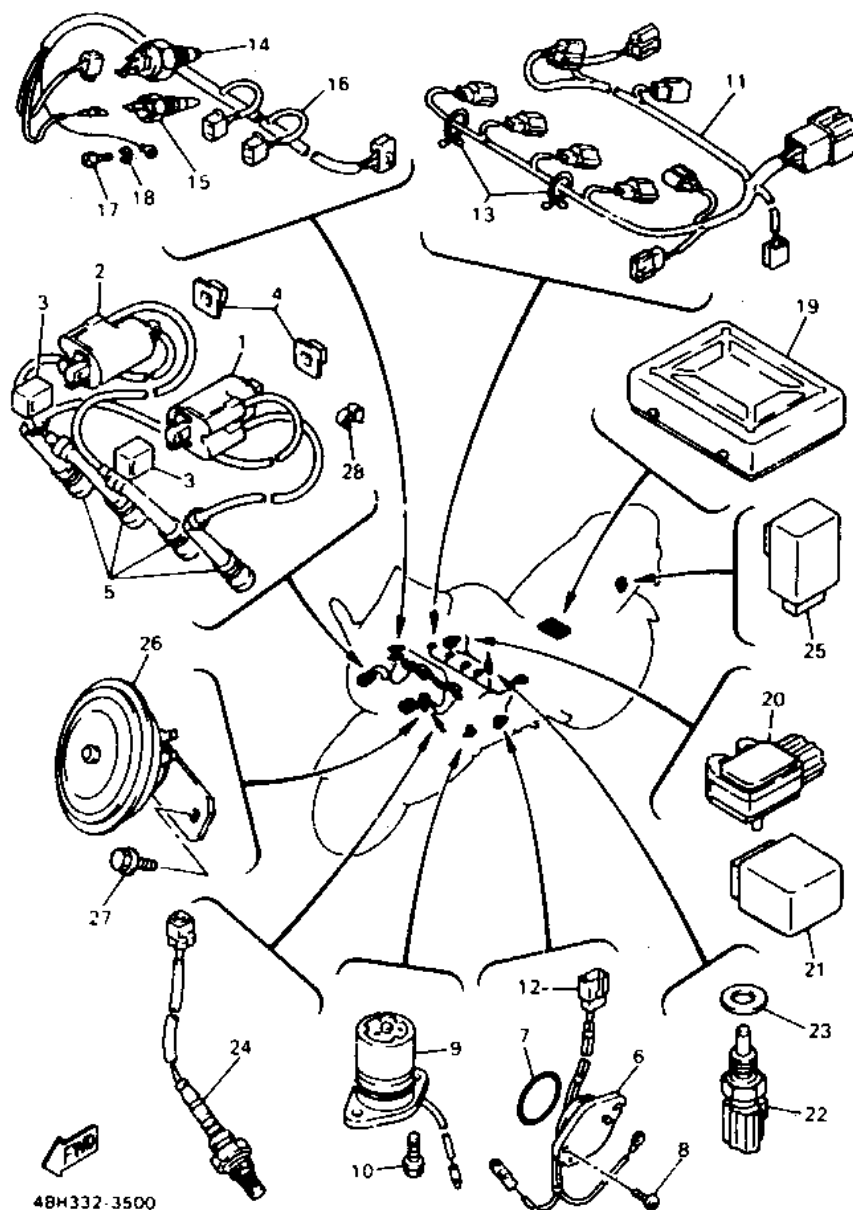


REF. NO.	PART NO.	DESCRIPTION	Q'TY	REMARKS
1	4HH-21110-00-P1	FRAME COMP.	1	LIGHT YELLOWISH GRAY 1
2	4BH-21102-00-P1	SIDE MEMBER SUB-ASSY	1	LIGHT YELLOWISH GRAY 1
3	90105-10678	BOLT, WASHER BASED	4	
4	4BH-21140-00-35	DOWN TUBE COMP.	1	SILVER
5	4BH-21150-00-35	DOWN TUBE COMP.2	1	SILVER
6	4FU-27424-00	DAMPER, FOOTREST 2	2	
7	90110-10218	BOLT, HEXAGON SOCKET HEAD	4	
8	90201-112R5	WASHER, PLATE	4	
9	95601-10200	NUT, SELF-LOCKING	4	
10	90110-10219	BOLT, HEXAGON SOCKET HEAD	4	
11	90334-08234	PLUG, STRAIGHT	4	
12	4BH-2117F-00-P1	COVER	1	LIGHT YELLOWISH GRAY 1
13	90149-06302	SCREW	2	
14	90105-10401	BOLT, WASHER BASED	1	
15	90179-10590	NUT	1	
16	3TJ-21459-00	SPACER	1	
17	97026-08035	BOLT	1	
18	92990-08200	WASHER, PLAIN	1	
19	90105-10044	BOLT, WASHER BASED	1	
20	90179-10247	NUT	1	
21	90105-10451	BOLT, WASHER BASED	2	
22	90179-10247	NUT	2	
23	4BH-21315-00	STAY, ENGINE 2	2	
24	95811-10025	BOLT, FLANGE	4	
25	90105-10480	BOLT, WASHER BASED	2	
26	90179-10247	NUT	2	
27	90387-115V8	COLLAR	2	
28	91311-10045	BOLT	2	
29	92990-08200	WASHER, PLAIN	2	
30	97021-08035	BOLT	2	
31	4BH-21423-00	TUBE, CROSS	1	
32	91311-08025	BOLT	2	
33	98511-06012	SCREW, PAN HEAD	1	
34	4BH-21183-00	PLATE	1	
35	90480-20571	GROMMET	2	
36	90387-083R4	COLLAR	2	
37	90119-08113	BOLT, WITH WASHER	2	
38	95622-06312	BOLT, STUD	1	
39	95701-06500	NUT, FLANGE	1	
40	90480-13203	GROMMET	2	
41	4BH-21101-00	FRONT FRAME COMP	1	
42	90105-10285	BOLT, WASHER BASED	2	
43	95811-10035	BOLT, FLANGE	2	
44	95601-10200	NUT, SELF-LOCKING	2	
45	4FE-21190-00	REAR FRAME COMP	1	
46	95811-10035	BOLT, FLANGE	2	
47	95601-10200	NUT, SELF-LOCKING	2	
48	90105-10433	BOLT, WASHER BASED	2	
49	4BH-21348-00	BRACKT, TANK FITTING	1	
50	91316-08025	BOLT	4	
51	95303-08800	NUT, CROWN	2	
52	4FE-21345-00	BRACKET, TANK FITTING	1	
53	95811-08016	BOLT, FLANGE	2	

C15

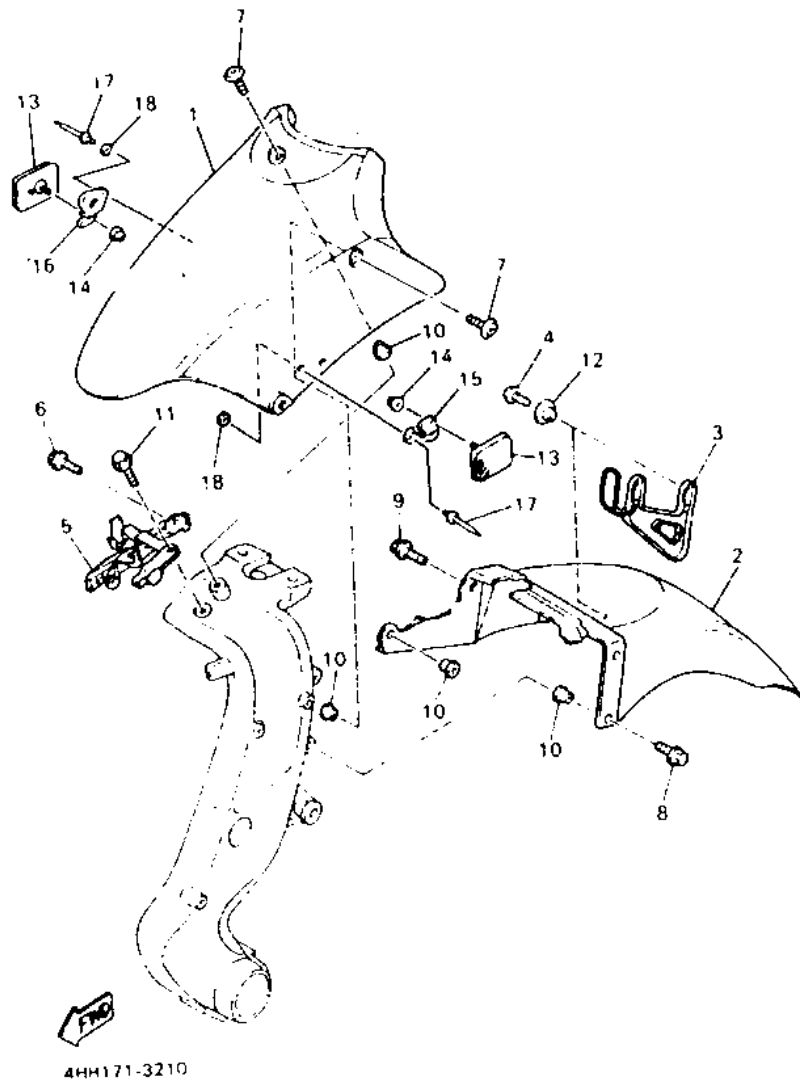
D2

FIG. 50 ELECTRICAL 1



REF. NO.	PART NO.	DESCRIPTION	QTY	REMARKS
1	48H-82310-00	IGNITION COIL ASSY	1	
2	48H-82320-00	IGNITION COIL ASSY	1	
3	48H-82317-00	DAMPER, IGNITION COIL	2	
4	4U8-82317-00	DAMPER, IGNITION COIL	2	
5	2KT-82370-00	PLUG CAP ASSY	4	
6	1AE-82540-00	NEUTRAL SWITCH ASSY	1	
7	93210-29196	O-RING	1	
8	98502-06016	SCREW, PAN HEAD	2	
9	3GM-85720-00	OIL LEVEL GAUGE ASSY	1	
10	95026-06016	BOLT, FLANGE	2	
11	48H-82580-00	WIRE HARNESS ASSY 2	1	
12	48H-82541-00	WIRE, LEAD	1	
13	90464-16115	CLAMP	2	
14	2EL-82560-00	THERMO SWITCH ASSY	1	
15	3YX-82560-00	THERMO SWITCH ASSY	1	
16	48H-82509-00	WIRE, SUB LEAD	1	
17	98580-05008	SCREW, PAN HEAD	1	
18	92901-05100	WASHER, SPRING	1	
19	48H-8591A-00	ENGINE CONTROL UNIT ASSY	1	
20	48H-82380-00	SENSOR, PRESSURE	1	
21	48H-8235Y-00	DAMPER	1	
22	48H-83591-00	THERMO UNIT	2	
23	90430-12202	GASKET	2	
24	48H-8592A-00	SENSOR	1	
25	3YA-83350-00	FLASHER RELAY ASSY	1	OMRON
26	25G-83371-00	HORN	1	
27	95816-08012	BOLT, FLANGE	1	
28	90464-10075	CLAMP	1	

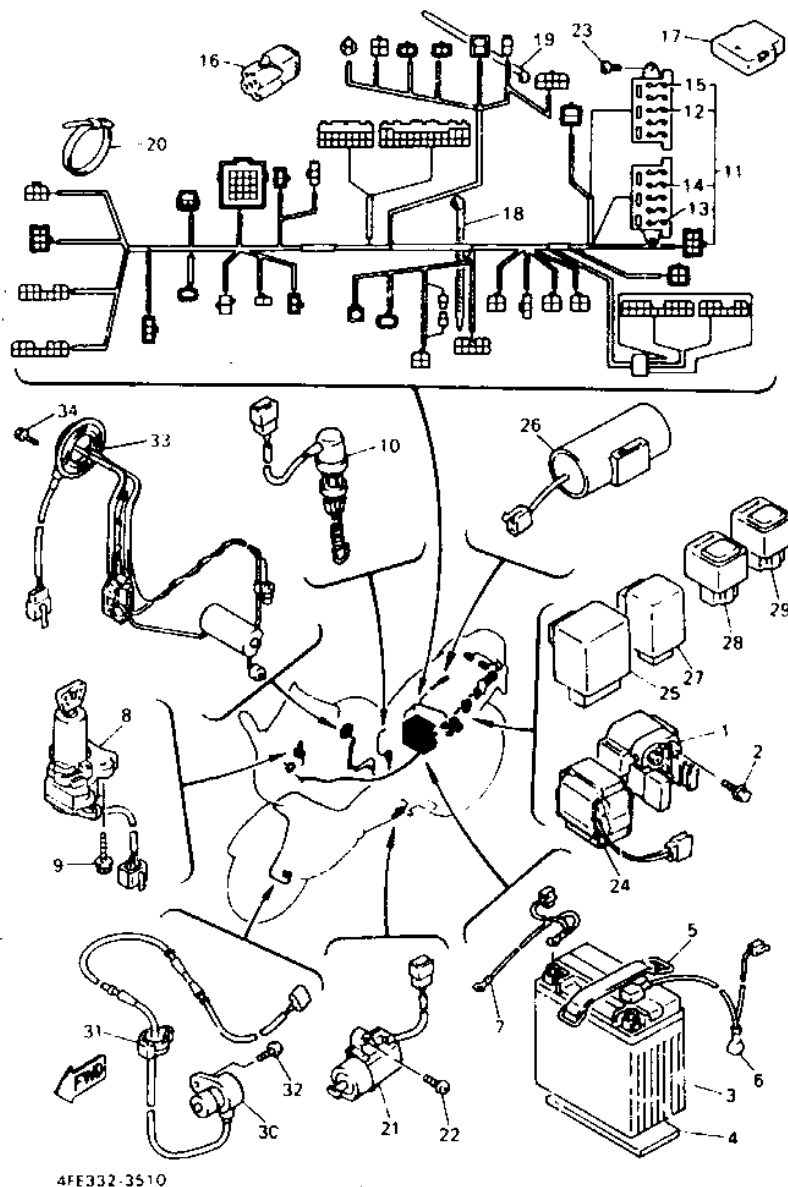
FIG. 21 FRONT FENDER



REF. NO.	PART NO.	DESCRIPTION	QTY	REMARKS
1	4FV-21311-00-P0	FENDER, FRONT	1	DEEP RED COCKTAIL 2
2	4BH-21556-00	FENDER, FRONT 2	1	
3	4BH-21596-00	HOLDER	1	
4	92016-06012	SCREW	2	
5	4BH-21513-00	STAY, FENDER 1	1	
6	95816-06012	BOLT, FLANGE	2	
7	90110-06200	BOLT, HEXAGON SOCKET HEAD	4	
8	90119-06061	BOLT, WITH WASHER	2	
9	90119-06108	BOLT, WITH WASHER	2	
10	90387-0702E	COLLAR	8	
11	92011-06016	BOLT, BUTTON HEAD	1	
12	90387-0702H	COLLAR	2	
13	23V-85110-00	REFLECTOR ASSY	2	
14	95701-05500	NUT, FLANGE	2	
15	4FV-21587-00	STAY 1	1	
16	4FV-21588-00	STAY 2	1	
17	90267-40073	RIVET, BLIND	4	
18	90201-044A2	WASHER, PLATE	4	

D3

FIG. 51 ELECTRICAL 2

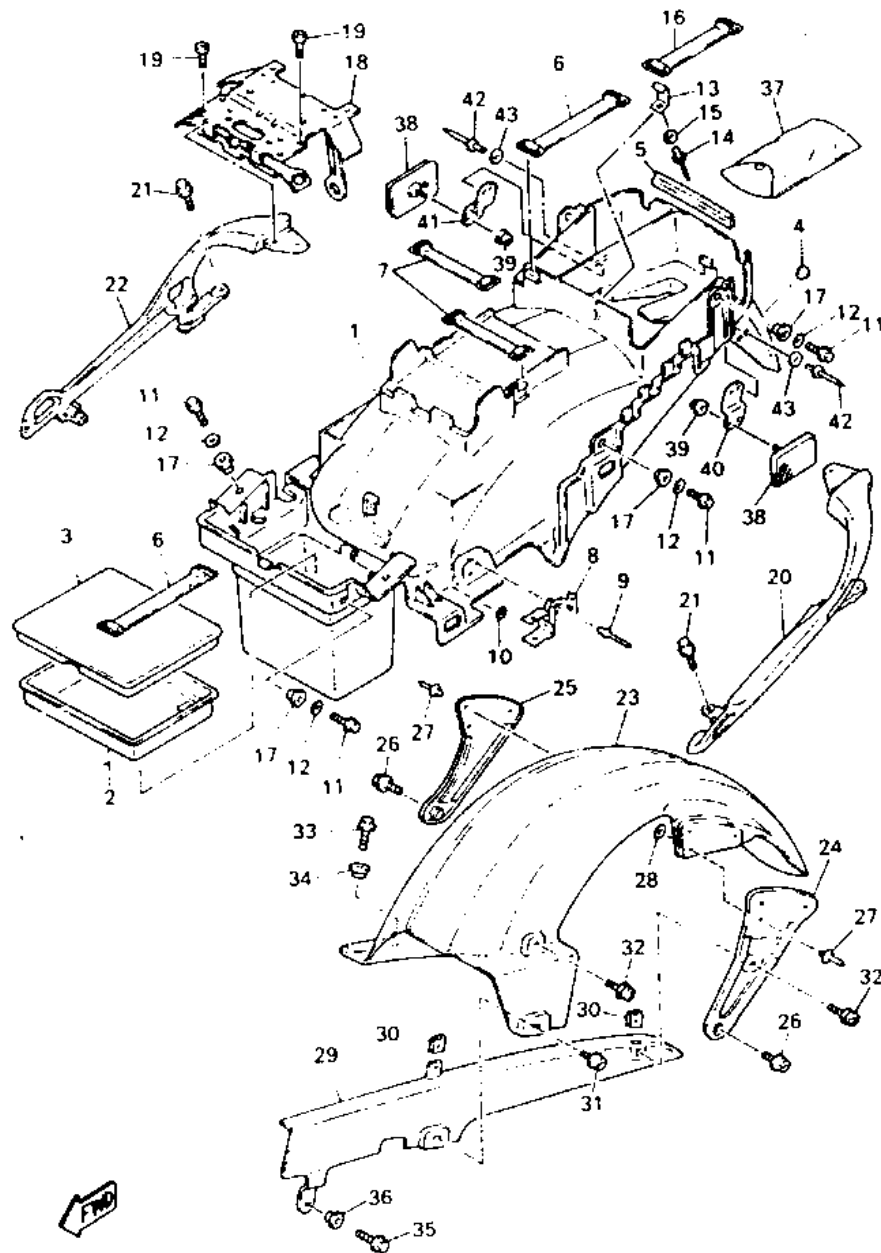


REF. NO.	PART NO.	DESCRIPTION	Q'TY
1	4BH-81940-00	STARTER RELAY ASSY	1
2	95020-06008	BOLT, FLANGE	2
3	3XW-82100-00	BATTERY ASSY	1
4	5X2-24183-00	DAMPER, LOCATING 3	1
5	2T4-82131-00	BAND, BATTERY	1
6	4BH-82115-00	WIRE, PLUS LEAD	1
7	4BH-82116-00	WIRE, MINUS LEAD	1
8	4BH-82501-00	MAIN SWITCH STEERING LOCK	1
9	90109-060G4	BOLT	2
10	4FE-82530-00	STOP SWITCH ASSY	1
11	4FE-82590-00	WIRE HARNESS ASSY	1
12	1AE-82151-00	FUSE (12V 30A)	2
13	2GH-82151-00	FUSE (20A)	2
14	42X-82151-00	FUSE (10A)	6
15	1NL-82151-00	FUSE	6
16	3YA-82378-00	CONNECTOR	2
17	4BH-87272-00	CAP	2
18	90464-14117	CLAMP	3
19	90465-13169	CLAMP	8
20	5Y9-12491-00	CLAMP 1	2
21	3LD-82566-40	SWITCH, SIDE STAND	1
22	90157-05079	SCREW, PAN HEAD	2
23	90109-060E9	BOLT	2
24	4BH-82576-00	EMERGENCY STOP SWITCH ASSY	1
25	2UJ-81950-00	RELAY ASSY	1
26	1NL-81965-00	CONDENSER, SMOOTHING	1
27	4BH-8195A-00	RELAY ASSY	1
28	25G-81950-01	RELAY ASSY	1
29	4U8-81950-02	RELAY ASSY	1
30	4BH-85970-01	WHEEL SENSOR ASSY, FRONT	1
31	90465-14310	CLAMP	3
32	90149-08297	SCREW	1
33	4BH-85752-00	SENDER UNIT ASSY, FUEL METER	1
34	90119-05071	BOLT, WITH WASHER	4

G4

G5

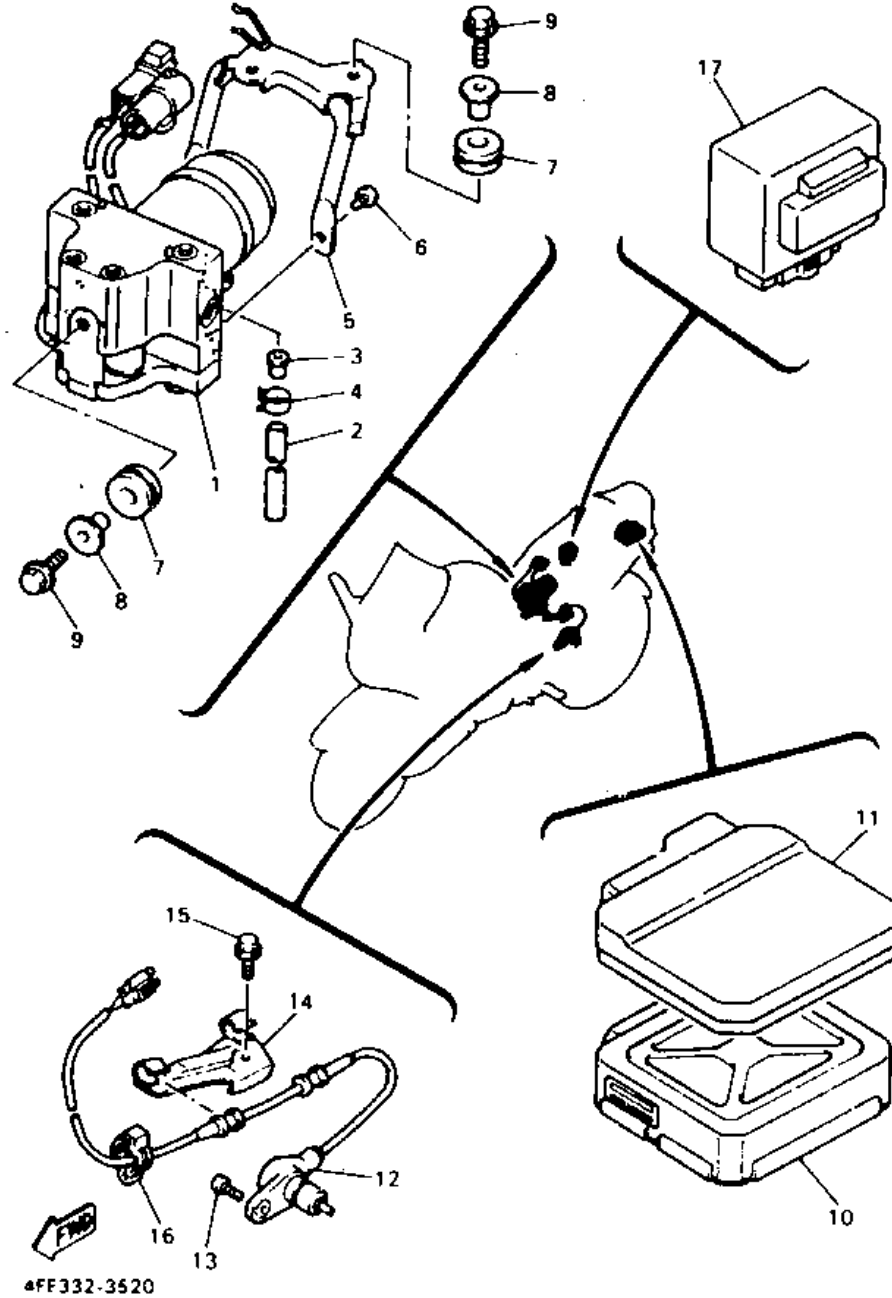
FIG. 22 REAR FENDER



4HH171-3220

REF. NO.	PART NO.	DESCRIPTION	Q'TY
29	4BH-22311-00	CASE, CHAIN	1
30	90183-06053	NUT, SPRING	2
31	90119-06044	BOLT, WITH WASHER	1
32	90159-06071	SCREW, WITH WASHER	2
33	95826-06020	BOLT, FLANGE	1
34	90387-062119	COLLAR	1
35	95816-06025	BOLT, FLANGE	1
36	90387-06737	COLLAR	1
37	4BH-28100-00	TOOL KIT	1
38	3G1-85130-01	REAR REFLECTOR ASSY	2
39	95701-05500	NUT, FLANGE	2
40	2LJ-21689-00	BRACKET, REAR STAY 2	1
41	2LJ-21688-00	BRACKET, REAR STAY	1
42	90267-40076	RIVET, BLIND	4
43	90201-044A2	WASHER, PLATE	4

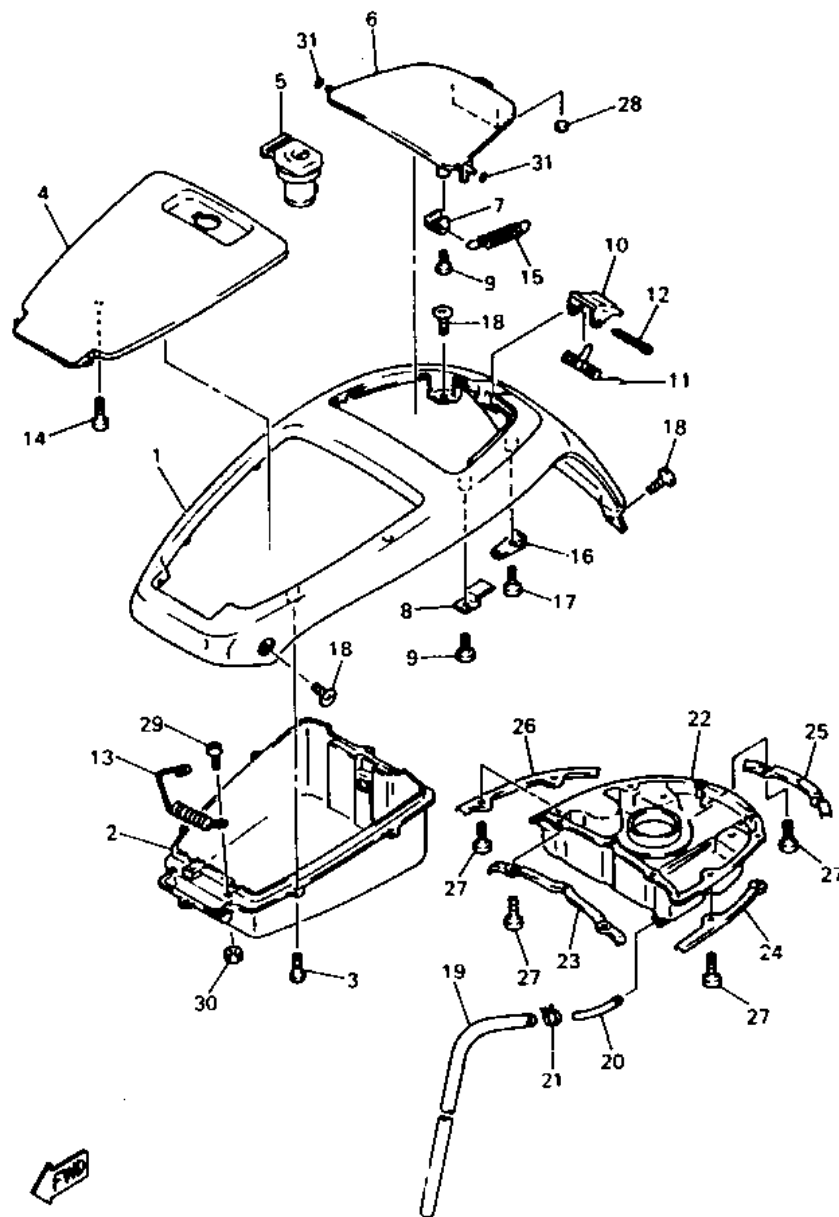
FIG. 52 ELECTRICAL 3



REF. NO.	PART NO.	DESCRIPTION	QTY
1	4FE-85930-00	HYDRAULIC UNIT ASSY	1
2	90445-10144	HOSE	1
3	90387-0401T	COLLAR	1
4	90467-13123	CLIP	1
5	4FE-2142J-00	STAY 3	1
6	92016-08012	SCREW	2
7	90480-20338	GROMMET	3
8	90387-081F5	COLLAR	3
9	95821-08025	BOLT, FLANGE	3
10	4FE-85940-00	ELECTRONIC CONTROL UNIT ASSY	1
11	4FE-8552E-00	COVER, CASE	1
12	4FE-85980-00	WHEEL SENSOR ASSY, REAR	1
13	90149-08297	SCREW	1
14	4FE-23318-00	HOLDER, CABLE 1	1
15	95811-06012	BOLT, FLANGE	1
16	90465-14310	CLAMP	1
17	3YA-81950-00	RELAY ASSY	1

G6

FIG. 23 COVER



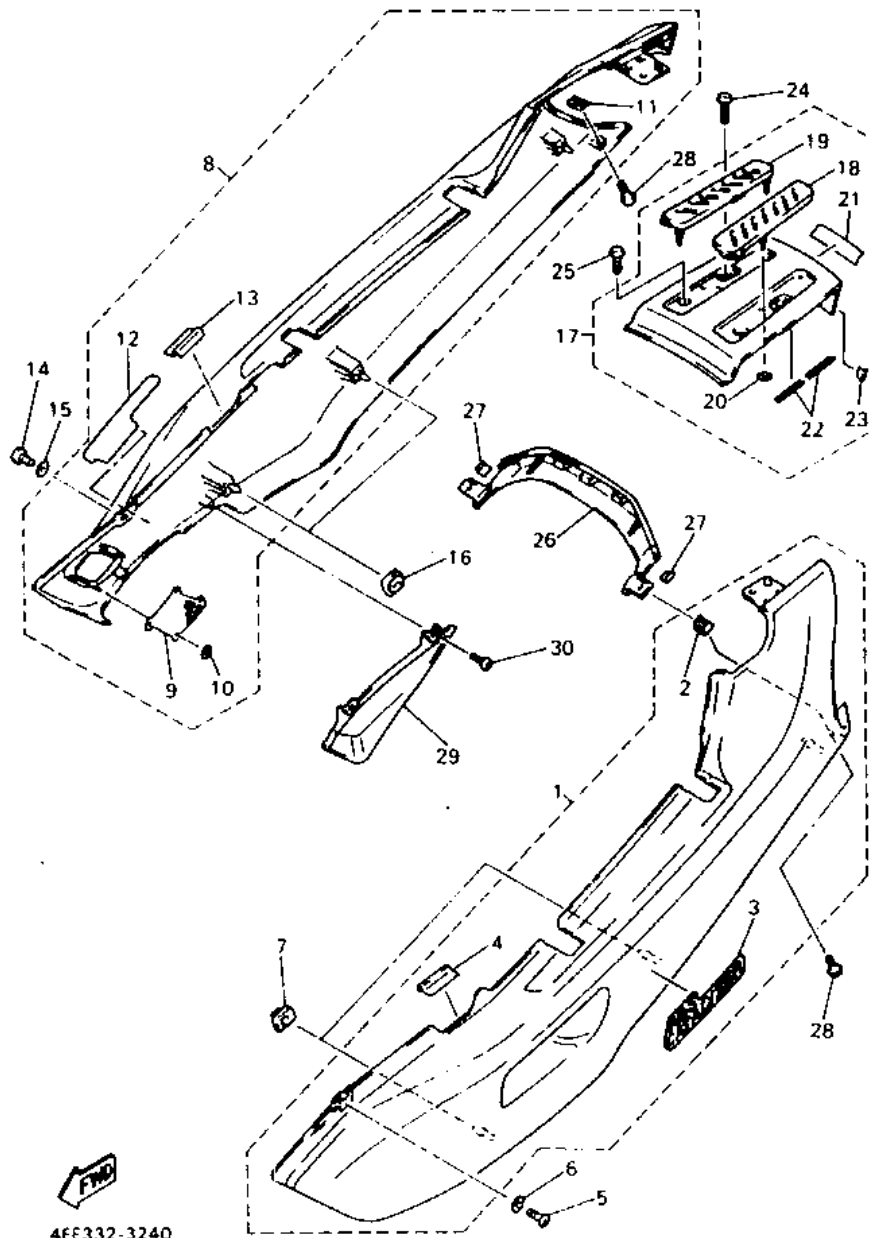
48H332-3230

D6

D7

REF. NO.	PART NO.	DESCRIPTION	Q'TY	REMARKS
1	4BH-2170F-00-6M	COVER, TOP	1	STAR SILVER
2	4BH-2177A-00	BOX	1	
3	97706-50010	SCREW, TAPPING	6	
4	4BH-2177E-00-6M	LID	1	STAR SILVER
5	4BH-21708-01	SIDE COVER LOCK ASSY	1	
6	4BH-2177J-00-6M	LID 2	1	STAR SILVER
7	4BH-2175V-00	BRACKET 3	1	
8	4BH-2178L-00	GUIDE 1	2	
9	97706-50508	SCREW, TAPPING	3	
10	4BH-28379-00	HOOK	1	
11	90508-104A1	SPRING, TORSION	1	
12	91401-30045	PIN, COTTER	1	
13	90508-203A6	SPRING, TORSION	1	
14	97706-50010	SCREW, TAPPING	1	
15	90506-07355	SPRING, TENSION	1	
16	4BH-2175W-00	BRACKET 4	1	
17	97706-50508	SCREW, TAPPING	1	
18	90154-05013	SCREW, BINDING	6	
19	90445-115H2	HOSE	1	
20	4BH-24376-00	PIPE, JOINT 1	1	
21	90467-11028	CLIP	1	
22	4BH-2414A-00	COVER, FILLER	1	
23	4BH-2172K-00	BRACKET 1	1	
24	4BH-2172L-00	BRACKET 2	1	
25	4BH-2172M-00	BRACKET 3	1	
26	4BH-2172N-00	BRACKET 4	1	
27	97706-50508	SCREW, TAPPING	8	
28	4BH-21746-01	DAMPER	4	
29	98906-05012	SCREW, BIND	1	
30	95380-05600	NUT	1	
31	93210-48364	O-RING	2	

FIG. 24 SIDE COVER



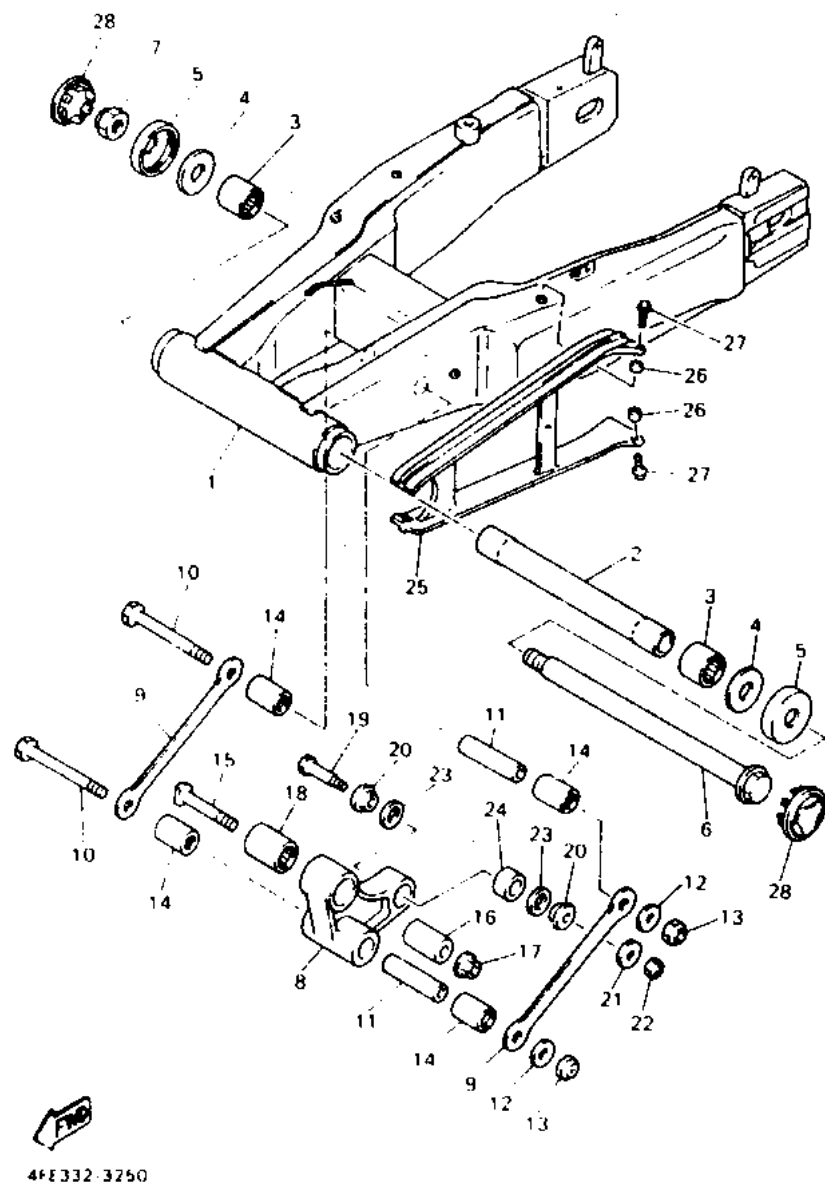
4FE332-3240

D8

D9

REF. NO.	PART NO.	DESCRIPTION	Q'TY	REMARKS
1	4BH-Y2171-20-P2	COVER, SIDE 1	1	DEEP RED COCKTAIL 2
2	90183-06023	.NUT, SPRING	1	
3	4FE-21781-00	.EMBLEM 1	1	
4	1JK-21268-00	.SEAL	1	
5	98906-06012	SCREW, BIND	1	
6	90202-06113	WASHER, PLATE	1	
7	90480-01510	GROMMET	2	
8	4BH-Y2172-20-P2	COVER, SIDE 2	1	DEEP RED COCKTAIL 2
9	4BH-2172A-00	.PANEL 1	1	
10	90183-03010	.NUT, SPRING	4	
11	90183-06023	.NUT, SPRING	1	
12	4FE-21782-00	.EMBLEM 2	1	
13	1JK-21268-00	.SEAL	1	
14	98906-06012	SCREW, BIND	1	
15	90202-06113	WASHER, PLATE	1	
16	90480-01510	GROMMET	2	
17	4BH-Y2165-00-P2	COVER, REAR FENDER	1	DEEP RED COCKTAIL 2
18	4BH-21639-00	.DAMPER 2	1	
19	4BH-21649-00	.DAMPER	1	
20	90183-04005	.NUT, SPRING	2	
21	99236-00080	.EMBLEM, YAMAHA	1	
22	46X-21269-00	.SEAL	4	
23	3TU-2178A-00	.LABEL	2	
24	98903-06012	SCREW, BIND	2	
25	98980-06016	SCREW, BIND	2	
26	4BH-2172X-00-P2	COVER, TAILLIGHT	1	DEEP RED COCKTAIL 2
27	3MA-27491-00	PROTECTOR	2	
28	98906-06012	SCREW, BIND	2	
29	4FE-21731-00	COVER, SIDE 3	1	
30	97706-50012	SCREW, TAPPING	2	

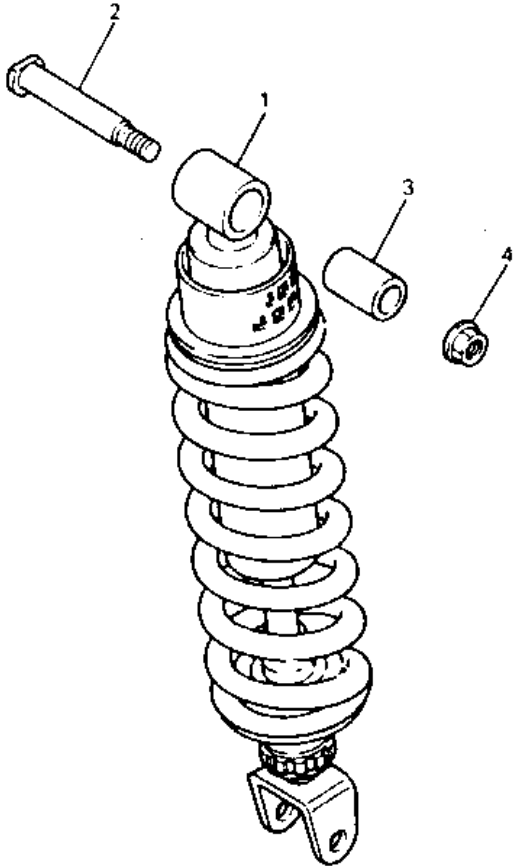
FIG. 25 REAR ARM



REF. NO.	PART NO.	DESCRIPTION	Q'TY	REMARKS
1	4FE-22110-00-P1	REAR ARM COMP.	1	LIGHT YELLOWISH GRAY 1
2	4BH-22184-00	BUSH	1	
3	93317-52865	BEARING, CYLINDRICAL	2	
4	4BH-22127-00	SHIM	2	
5	4BH-22128-00	COVER, THRUST 1	2	
6	4BH-22141-00	SHAFT, PIVOT	1	
7	90185-20160	NUT, SELF-LOCKING	1	
8	4BH-2217A-00	ARM, RELAY	1	
9	4BH-2217M-00	ARM 1	2	
10	90101-12749	BOLT	2	
11	90387-126Y1	COLLAR	2	
12	90201-126A7	WASHER, PLATE	2	
13	90185-12119	NUT, SELF-LOCKING	2	
14	93317-41761	BEARING, CYLINDRICAL	4	
15	90109-101F1	BOLT	1	
16	90387-100T8	COLLAR	1	
17	95601-10200	NUT, SELF-LOCKING	1	
18	93317-42060	BEARING, CYLINDRICAL	1	
19	90101-10659	BOLT	1	
20	90387-124W2	COLLAR	2	
21	90201-10437	WASHER, PLATE	1	
22	90185-10060	NUT, SELF-LOCKING	1	
23	93101-16131	OIL SEAL	2	
24	93399-99919	BEARING	1	
25	4BH-22151-00	SEAL, GUARD	1	
26	90387-06704	COLLAR	2	
27	90159-06108	SCREW, WITH WASHER	2	
28	4BH-2219X-00	COVER	2	

D10

FIG. 26 REAR SUSPENSION

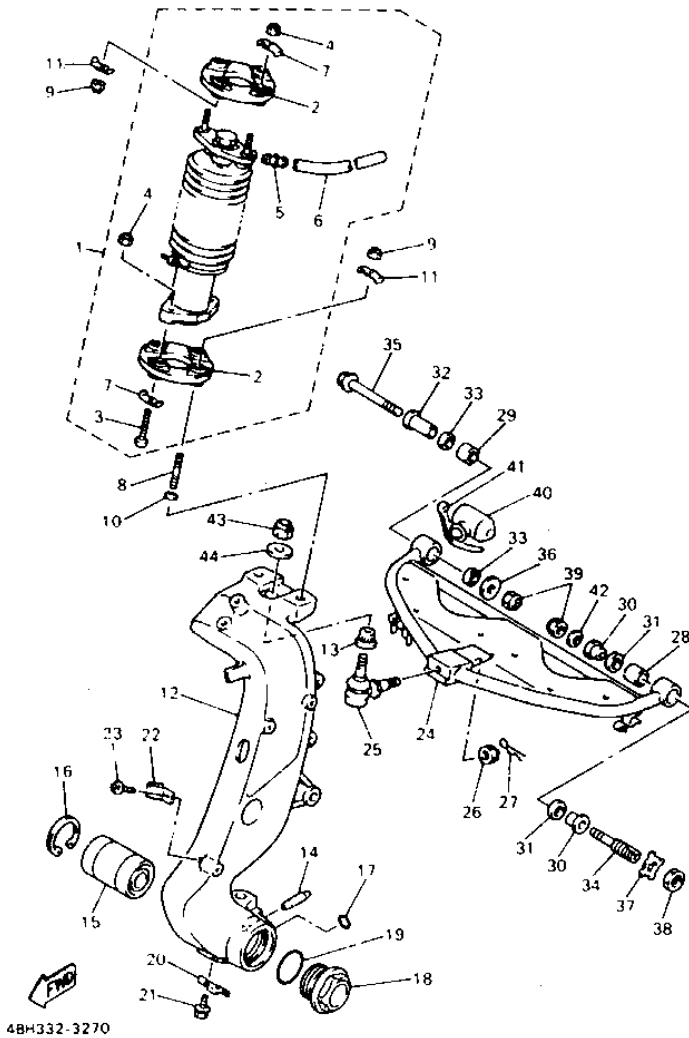


REF. NO.	PART NO.	DESCRIPTION	QTY	REMARKS
1	4BH-22210-20	SHOCK ABSORBER ASSY. REAR	1	
2	90109-101F1	BOLT	1	
3	90387-102T0	COLLAR	1	
4	95601-10200	NUT, SELF-LOCKING	1	


4BH332-3260

D11

FIG. 27 STEERING



REF. NO.	PART NO.	DESCRIPTION	Q'TY	REMARKS
1	4BH-23530-00	TUBE, STEERING COMP	1	
2	4BH-2353A-00	JOINT, RING	2	
3	90109-087F9	BOLT	2	
4	95616-08100	NUT, U	4	
5	4BH-24119-00	TUBE, CONNECTING	1	
6	4BH-2384R-00	HOSE	1	
7	4BH-23392-00	WASHER, SPECIAL	4	
8	95611-08630	BOLT, STUD	2	
9	95616-08100	NUT, U	4	
10	90201-08085	WASHER, PLATE	2	
11	4BH-23392-00	WASHER, SPECIAL	4	
12	4BH-23512-10-P1	ARM, KNUCKLE 1	1	LIGHT YELLOWISH GRAY 1
13	4BH-23526-00	BUSH	1	
14	91609-40032	PIN, SPRING	1	
15	93307-20602	BEARING	1	
16	93420-62070	CIRCLIP	1	
17	93210-18397	O-RING	1	
18	4BH-23741-00	CAP 1	1	
19	93210-59748	O-RING	1	
20	4BH-2332U-00	PLATE, SUPPORT	1	
21	95811-06010	BOLT, FLANGE	1	
22	4BH-23317-00	HOLDER, CABLE	1	
23	92011-06012	BOLT, BUTTON HEAD	1	
24	4FE-23540-00-33	FRONT UPPER ARM COMP. (LEFT)	1	YAMAHA BLACK
25	4BH-23549-00	BALL JOINT 1	1	
26	95611-10200	NUT, SELF-LOCKING	1	
27	90468-20100	CLIP	1	
28	93399-99901	BEARING	1	
29	93317-31701	BEARING, CYLINDRICAL	1	
30	90387-1200E	COLLAR	2	
31	93104-151J1	OIL SEAL	2	
32	4BH-23364-00	COLLAR 2	1	
33	93109-17048	OIL SEAL (SDO 17-24-4)	2	
34	4BH-23451-00	BOLT, FITTING 1	1	
35	90105-10451	BOLT, WASHER BASED	1	
36	90201-105A2	WASHER, PLATE	1	
37	4BH-23418-00	WASHER, SPECIAL	1	
38	90170-18412	NUT	1	
39	95611-10100	NUT, U	2	
40	4BH-2384L-00	COVER, DUST	1	
41	12R-82591-00	BAND	1	
42	90201-101J1	WASHER, PLATE	1	
43	90185-12119	NUT, SELF-LOCKING	1	
44	90201-120A5	WASHER, PLATE	1	

D12

D13